



What does Maryville Quarry make?

We believe in doing The Right Thing, The Right Way, at The Right Time. Since the 1940s, Maryville Quarry has been a vital economic engine for the region and an active community partner. We produce construction aggregates that are the building blocks for our roads, bridges, homes, hospitals, schools, office buildings, and places of worship.

What does the Optimization and Benefits Plan accomplish?

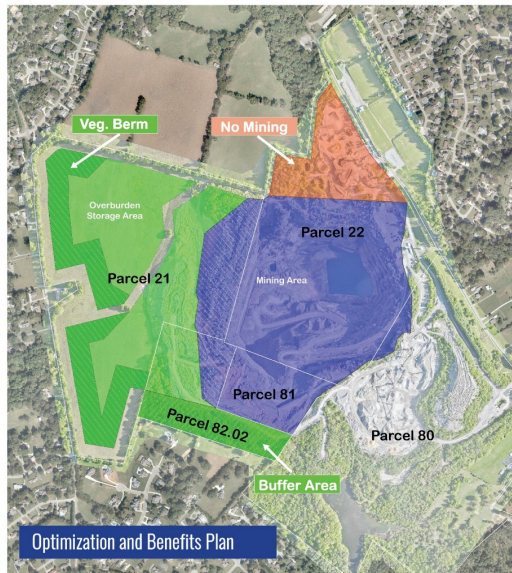
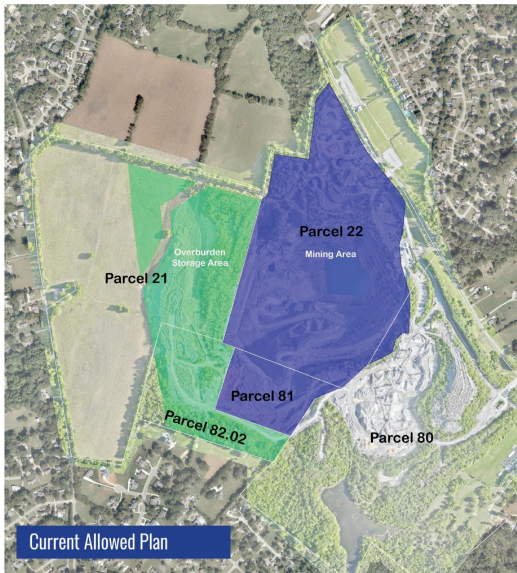
For more than a year, our team has been diligently working on ways to update a nearly two decades old site plan to enhance the overall appearance and experience for all our neighbors. So, why now? Our engineers plan our sites in 20+ year cycles. Through advances in engineering and design, we can more efficiently use natural topography, creating long-term benefits for the community.

- **New Landscaped Berm:** Constructs a permanent landscaped berm along the western boundary to provide long-term visual and sound screening for neighbors in and around Shannondale, Trotwood Farms and Montvale Road.
- **Better Overburden Storage:** Reconfigures and restricts overburden storage height to the current elevation, providing visual benefits around the site and bringing the western perimeter up to the Duncan Road berm standard.
- **Preserved Southern Buffer:** Preserves a critical 300 ft. southern buffer area to screen Trotwood Farms neighbors from the operation.
- **Centralized Mining:** Centralizes mining away from Jarvis Park, the sports fields, and our Windsor Park neighbors. It also establishes a minimum 1,500-foot mining setback (5 football fields) from Montvale Road.
- **Safety and Monitoring:** Increases the safe blasting and sound monitoring network and continues transparent reporting to the City and public.
- **Low-Sound Alarms:** Requires low-sound safety backup alarms on mobile equipment operating in the overburden storage area.



So, what's overburden?

Overburden is the natural earthen material that we remove to access the rock that is needed to make high-quality construction materials. Today, the overburden is stored in designated areas to the west and south of our mining operations. Under the Optimization and Benefits Plan, we will refine the site layout to centralize mining and create better overburden storage. We will take advantage of the natural topography and construct a permanent landscaped berm along our western boundary. The new berm will provide long-term visual and sound screening for our neighbors in and around Shannondale, Trotwood Farms, and Montvale Road.



- 120 ft. Lower**
Limits overburden elevation on Parcels 21 and 82.02 to current height
- Preserves Critical Buffer**
Maintains Parcel 82.02 southern vegetated screening
- Centralizes Mining**
Eliminates mining on Parcel 22 Triangle Area by the sports fields

Our Commitment

We responsibly use our land to serve the community in many impactful ways beyond making the products that are vital to the local economy. Our employees support local schools, first responders and nonprofits across Blount County.

- \$3.5 million+ raised for Cystic Fibrosis Research with Cure Finders from our Sporting Clays Tournament
- Home to Special Growers which provides job opportunities for young adults with special needs
- Dedicated 24+ acres for Vulcan Fields, partnering with Blount United Soccer Club for youth development

We work hard to be a good neighbor by consistently meeting or doing better than local, state, and federal laws and regulations to protect our people, community, and environment. We also maintain timely and transparent monitoring, reporting, and open communication with the City of Maryville and the community.

What's next?

We are actively sharing the Optimization and Benefits plan with our neighbors and stakeholders, listening to feedback, and answering questions to incorporate into a formal proposal for eventual submission. Please visit our website for more information or call us if you have any questions.

