



Pella® 250 Series Sliding Patio Door Roller Adjustment And Replacement Service Instruction

These instructions apply to:

Pella® 250 Series Sliding Patio Door 07/2019 - Current

Tools Required:

- Powered Driver with a Phillips drive bit
- #2 Phillips screwdriver with 6" shaft

1 Roller Adjustment:

A. Open Vent panel 6" - 10".



B. Insert #2 Phillips screwdriver into adjustment hole on each side of vent panel.



1 Roller Adjustment (Continued):

- C. Raise or lower roller until panel stile is plumb with frame jamb.



2 Roller Replacement:

- A. Unlock and slide open door by 6".



2 Roller Replacement (Continued):

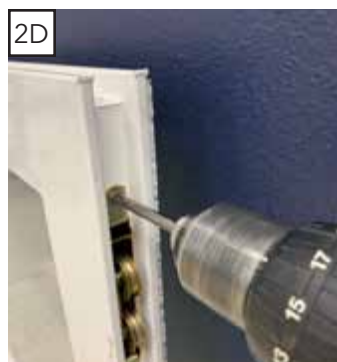
- B. Lift panel 1" vertically to allow the bottom to come out of the track toward the interior and remove vent panel from frame.



- C. Place the panel on edge to gain access to the roller attachment screws.

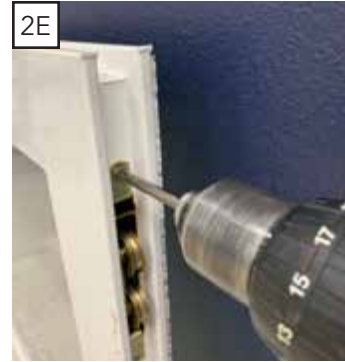


- D. Remove roller attachment screws and remove rollers.



2 Roller Replacement (Continued):

E. Replace rollers and attachment screws.



F. Reinstall panel and check for plumb and adjust rollers.

