



Entry Door Field Applied Cladding

Installation Instruction

These instructions apply to:

Pella® Entry Door 02/2020 - Current

Supplies with Kit:

- Frame Cladding
- Molded nose
- Hardware package



Tools Required:

- Tape measure
- Pen or pencil
- Saw
- Tape
- Mallet
- Block of wood
- Utility knife
- Drill with 11/64" bit
- Staple gun with 1/4" wide x 1-1/4" long or similar staples
- Sealant gun with sealant
- Brush or broom (if using screws)
- Pella Flashing Tape



Molded nose
end profile

Place the door on top of the cardboard packaging to protect it during the frame cladding application.

The cladding attachment steps depicted show an in-swing entry door, steps on a out-swing door are similar.

Attaching the molded nose with staples is recommended, using screws is optional and is covered in Step 2; however refer to Step 1 for proper molded nose prep.

1 Prep Entry Door Frame:

Molded nose length cut overview:

Two molded nose strips cut to FH-2-1/8" and one cut to FW-4".

- A. Locate the molded nose on one jamb 2" from the head corner.



Note: The 2" at the head corner is to ensure there is room for the cornerlock when the frame cladding is installed.

- B. Keeping the molded nose in place, mark the nose at the other end of the frame 1/8" short of the sill end.

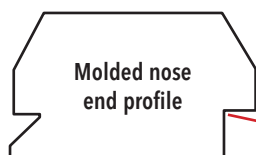


1 Prep Entry Door Frame (continued):

C. Cut the jamb molded nose to length.



D. Position the cut molded nose on the jamb, making sure the nose is 1/8" from the bottom of the frame and 2" from the top of the frame. The edge of the molded nose with the larger cut-out and the word "PANEL" and the arrows must be positioned toward the door panel.



Position molded nose on frame jambs so larger cut-out is towards panel.



E. Use the provided template to position the molded nose correctly with the arrows pointed toward the door panel. Near one end, insert a staple next to the template.



F. Continue adding staples on 8" centers along the length of the jamb.



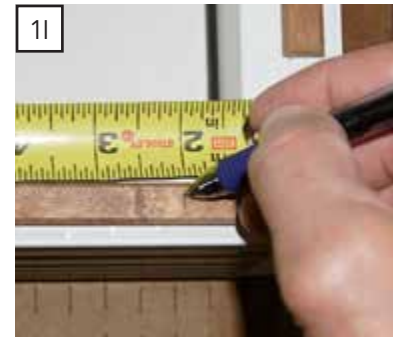
G. Repeat 1A-1F on the other jamb.

1 Prep Entry Door Frame (continued):

- H. If a staple misfires and splits the molded nose, use a utility knife to trim the wood as shown. This will allow the clad to fully seat when attached later in this instruction.



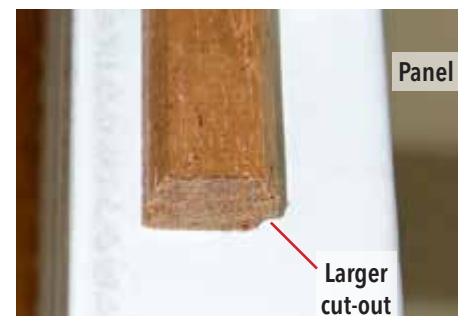
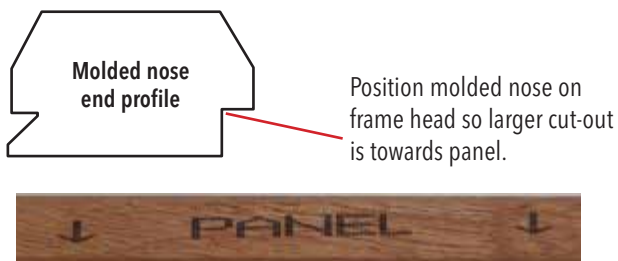
- I. Position a molded nose on the head 2" from one side of the frame and mark 2" from the end on the other side of the frame.



- J. Cut the head molded nose to length.



- K. Position the cut molded nose on the head, making sure the nose is 2" from each side of the frame. The edge of the molded nose with the larger cut-out must be positioned toward the door panel. Position the molded nose so the printed word "PANEL" and arrows point toward the door panel.



- L. Use the provided template to position the molded nose correctly with the arrows pointed toward the door panel. Near one end, insert a staple next to the template.



1 Prep Entry Door Frame (continued):

M. Continue adding staples on 8" centers along the length of the head.



2 Optional Molded Nose Screw Attachment Method:

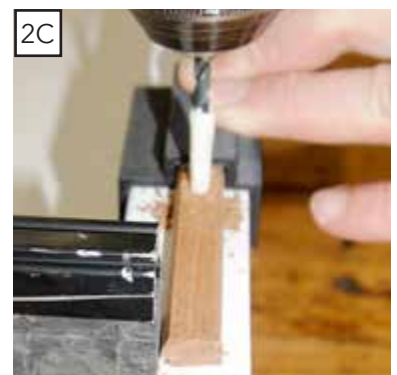
- A. Position the cut molded nose on the frame, making sure the nose is in the correct location. The printed word "PANEL" and arrows point toward the door panel and edge of the molded nose with the larger cut-out must be positioned toward the door panel.



- B. Apply tape to the 11/64" drill bit (or use a drill stop) to mark 1/2" to drill the pilot holes to the correct depth.



- C. Use the provided template to position the molded nose correctly with the arrows pointed toward the door panel. Near one end, drill a pilot hole next to the template.



2 Optional Molded Nose Screw Attachment Method (continued):

- D. Insert one of the provided screws #8 x 2" into the pilot hole just drilled. This will keep the molded nose in place while drilling the remainder of the pilot holes.



- E. Continue drilling pilot holes on 8" centers along the length of the molded nose.



- F. Insert a screw into each pilot hole.

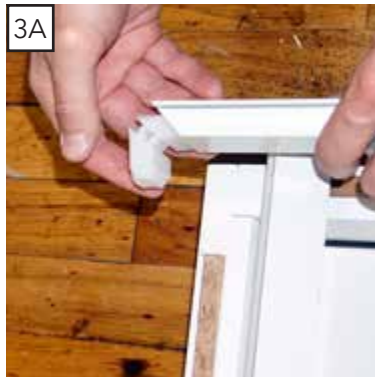
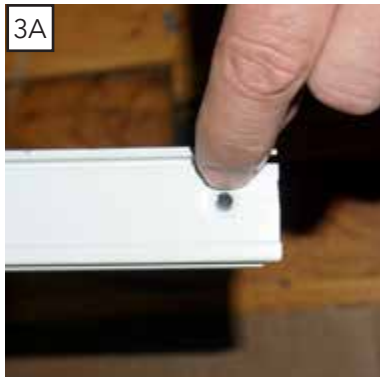
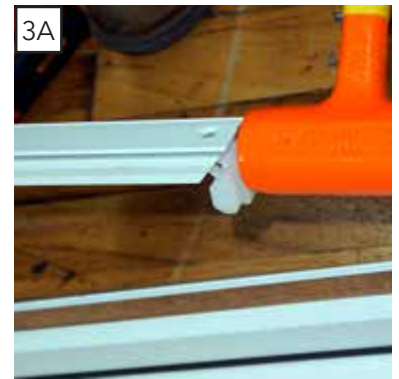


- G. Clean drill dust from the edge of molded nose.



3 Assemble and Install Frame Cladding:

- A. Insert a cornerlock into each end of the head frame clad piece. If needed tap the cornerlock in so the screw hole in the cornerlock aligns with the screw hole in the frame clad.



- B. Place each jamb clad piece onto the cornerlock. Insert a cornerlock screw through the frame head into the cornerlock.



3 Assemble and Install Frame Cladding (continued):

- C. Apply 1/8" bead of sealant against the molded nose where it contacts the frame along the outside edge across both jambs and the head of the frame.



- D. Continue the sealant to each corner.



- E. Position the assembled clad frame over the molded nose.



- F. Starting on one head and jamb corner; use a block of wood and mallet to tap the frame clad onto the molded nose. Make sure the clad is fully seated onto the molded nose with no gap between the clad and composite frame material.

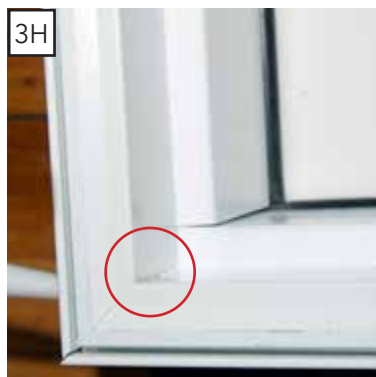
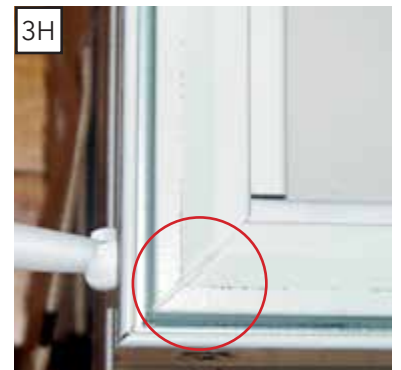


3 Assemble and Install Frame Cladding (continued):

G. Continue around the frame to use the block of wood and mallet to tap the clad onto the molded nose.



H. Inject sealant into each frame jamb cornerlock screw hole until sealant is visible in the frame corner joint.

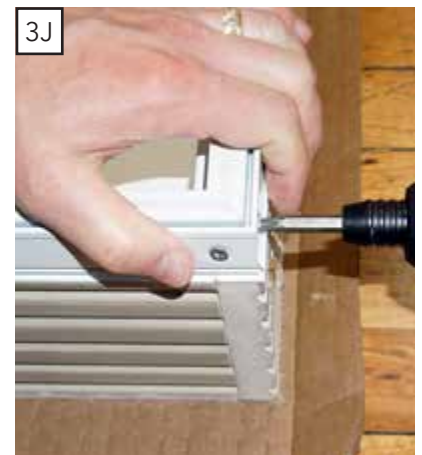


3 Assemble and Install Frame Cladding (continued):

- I. If there is a gap in any corner, tap on the frame near the sill to close the gap.



- J. Insert the 2nd cornerlock screw in each corner.



- K. Clean off the excess sealant on each corner.



4 Apply Flashing Tape to Sill and Attach Flashing Fin:

- A. Apply flashing tape to the bottom of the sill and over the jamb frame clad as shown. Align tape with exterior of sill profile so exterior perimeter sealant bead will contact the tape.

Optional Fin to be used for flashing backing only. Fin should not be used for structural anchoring of the door. Metal fins and fin corner must be ordered separately.



- B. Insert the flashing fin into the frame accessory groove and tap it into place.



- C. Fold out the fin to 90°. This fin is to be used for **flashing only** not for installation.



5 Out-Swing Doors:

- A. Out-swing doors will require extended latch strikes once the cladding is installed. Extended strikes in Pella finishes may be ordered separately from Pella. When using hardware supplied by others a suitable extended strike will need to be provided.

