

Features and Options	BF-2
Glazing Performance.....	BF-3
Design Data	
Special Sizes and Dimensions.....	BF-4
Panel Configurations	BF-5
Detailed Product Descriptions	BF-10
Unit Sections	BF-11

Document Navigation Tips:

Items listed in the table of contents above are active links that will take you to the corresponding page.
The logo on each page is a link back to this table of contents.
Bookmarks are also included in this PDF document and are available as an additional navigation option.

Features and Options

Glazing

Glazing Type

- Dual-Pane Tempered Insulating Glass
- Triple-Pane Tempered Insulating Glass
- Dual-Pane Laminated Insulating Glass

Insulated Glass Options/Low-E Types

- Low-E 366
- Low-E 366/i89
- Low-E 270

Glass

- Tempered Glass
- Laminated Glass (Dual-Pane only)

Gas Fill

- Argon
- Air (High-Altitude)

Frame and Panels

- Thermally Broken Aluminum

Finishes¹

- Satin Anodized, Black Anodized

Hardware

Finishes¹

- Satin Nickel, Black

(1) Contact your local sales representative for current designs and color options.



Glazing Thickness	Type of Glazing	NFRC Certified Product #	Glass (mm)		Gap Fill	Performance Values ₁				Shaded Areas Meet ENERGY STAR® Performance Criteria in Zones Shown				
			Ext.	Int.		U-Factor	SHGC	VLT	CR	U. S.				Canada ₂
										Zone	ER	Zone		
Dual-Pane - Narrow										N	NC	SC	S	CA
1"	366/ clear	PENDING	5	5	Argon									
1"	366/ i89	PENDING	5	5	Argon									
1"	270/ clear	PENDING	5	5	Argon									
1"	366/ clear	PENDING	5	5	Air									
1"	366/ i89	PENDING	5	5	Air									
1"	270/ clear	PENDING	5	5	Air									
Dual-Pane Laminated - Narrow														
1-1/4"	366/ clear	PENDING	5	5	Argon									
1-1/4"	366/ i89	PENDING	5	5	Argon									
1-1/4"	270/ clear	PENDING	5	5	Argon									
1-1/4"	366/ clear	PENDING	5	5	Air									
1-1/4"	366/ i89	PENDING	5	5	Air									
1-1/4"	270/ clear	PENDING	5	5	Air									
Dual-Pane - Wide														
1"	366/ clear	PENDING	5	5	Argon									
1"	366/ i89	PENDING	5	5	Argon									
1"	270/ clear	PENDING	5	5	Argon									
1"	366/ clear	PENDING	5	5	Air									
1"	366/ i89	PENDING	5	5	Air									
1"	270/ clear	PENDING	5	5	Air									
Dual-Pane Laminated - Wide														
1-1/4"	366/ clear	PENDING	5	5	Argon									
1-1/4"	366/ i89	PENDING	5	5	Argon									
1-1/4"	270/ clear	PENDING	5	5	Argon									
1-1/4"	366/ clear	PENDING	5	5	Air									
1-1/4"	366/ i89	PENDING	5	5	Air									
1-1/4"	270/ clear	PENDING	5	5	Air									

Glazing Thickness	Type of Glazing	NFRC Certified Product #	Glass (mm)			Gap Fill	Performance Values ₁				Shaded Areas Meet ENERGY STAR® Performance Criteria in Zones Shown				
			Ext.	Mid.	Int.		U-Factor	SHGC	VLT %	CR	U. S.				Canada ₂
											Zone	ER	Zone		
Triple-Pane - Narrow										N	NC	SC	S	CA	
1-5/8"	366/ clear/ 180	PENDING	5	5	5	Argon									
1-5/8"	366/ 180/ i89	PENDING	5	5	5	Argon									
1-5/8"	270/ clear/ 180	PENDING	5	5	5	Argon									
1-5/8"	366/ clear/ 180	PENDING	5	5	5	Air									
1-5/8"	366/ 180/ i89	PENDING	5	5	5	Air									
1-5/8"	270/ clear/ 180	PENDING	5	5	5	Air									
Triple-Pane - Wide															
1-5/8"	366/ clear/ 180	PENDING	5	5	5	Argon									
1-5/8"	366/ 180/ i89	PENDING	5	5	5	Argon									
1-5/8"	270/ clear/ 180	PENDING	5	5	5	Argon									
1-5/8"	366/ clear/ 180	PENDING	5	5	5	Air									
1-5/8"	366/ 180/ i89	PENDING	5	5	5	Air									
1-5/8"	270/ clear/ 180	PENDING	5	5	5	Air									

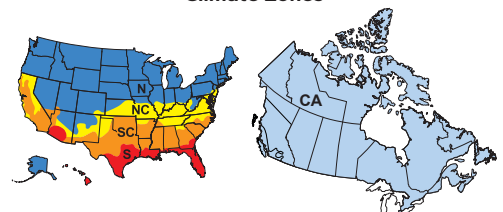
R-Value = 1/U-Factor
 SHGC = Solar Heat Gain Coefficient
 VLT % = Visible Light Transmission
 CR = Condensation Resistance
 ER = Canadian Energy Rating

(1) Glazing performance values are calculated based on NFRC 100, NFRC 200 and NFRC 500. ENERGY STAR® values are updated to 2023 (version 7) criteria.

(2) The values shown are based on Canada's updated ENERGY STAR® 2020 initiative.

Visit www.energystar.gov for Energy Star guidelines.

Climate Zones



Frame Height		Panel Width		Panel Height	
Minimum	Maximum	Minimum	Maximum	Minimum	Maximum
36"	132.5"	18"	39"	32.301	129"

Special Sizes are available in 1/4" Increments

Dimension		Formula
Rough Opening Width		$FW + 0.5"$
Rough Opening Height		$FH + 0.5"$
Panel Height: Standard Sill		$FH - 3.6988"$
Panel Height: Low Profile (ADA) Sill		$FH - 3.699"$
Panel Height: Flush Sill		$FH - 3.6988"$
Panel Projection		Panel width - 0.9"
Clear Opening (Approximate)		$FW - \text{Panel Stack} - 3.187"$
Panel Stack One-Side No Handle Set (Approximate)		$\# \text{ Panels} \times 2.25" + (\# \text{ Panels} - 1) \times 0.62"$
Panel Stack One-Side w/ Handle Set (Approximate)		$\# \text{ Panels} \times 2.25" + (\# \text{ Panels} - 1) \times 0.62" + 5.05"$
Panel Width	One Way No Passage Door	$(FW - (TP-1) \times 0.1574" - 2.806") / TP$
	One Way with Passage Door	$(FW - (TP-1) \times 0.1574" - 2.806") / TP$
	Split No Passage Door	$(FW - (TP-2) \times 0.1574" - 2.806" - 0.473") / TP$
	Split with Passage Door	$(FW - (TP-2) \times 0.1574" - 2.806" - 0.275") / TP$

KEY
FW = Frame Width
FH = Frame Height
TP = Total # of panels
PW = Panel Width
PH = Panel Height
ROW = Rough Opening Width
ROH = Rough Opening Height

X = Venting, O = Fixed. All dimensions are in inches.

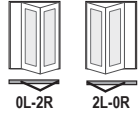

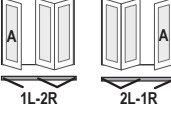
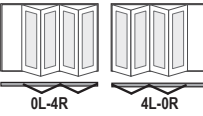
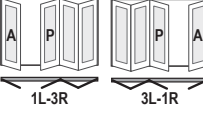




*Non-rated, passed internal Air/Water/Structural testing

Those noted as NR are not AAMA/WDMA performance certified.

Custom sized units in 1/8" increments.

Doors are viewed from the exterior.

Contact your local sales representative for more information.

	Panel Configuration	Passage-Door handing	Panel Size (inches)		Performance Class and Grade ¹	
			Min. Width	Max Width	Out-swing Standard Sill	Out-swing U-Channel & Flush Sill
2-Panel	 0L-2R 2L-0R	No passage door	39.2135	81.2135	NC	NC
			39.2135	81.2135	NC	NC
3-Panel	 0L-3R 3L-0R	Active Right, Active Left	57.3710	120.3710	NC	NC
			57.3710	120.3710	NC	NC
	 1L-2R 2L-1R	Active Left, Active Right	57.4885	120.4885	NC	NC
			57.4885	120.4885	NC	NC
4-Panel	 0L-4R 4L-0R	No passage door	75.5285	159.5285	NC	NC
			75.5285	159.5285	NC	NC
	 1L-3R 3L-1R	Active Left/Passive Right, Passive Left/Active Right	75.6460	159.6460	NC	NC
			75.6460	159.6460	NC	NC
	 2L-2R	No passage door	75.8441	159.8441	NC	NC
	5-Panel	 0L-5R 5L-0R	Active Right, Active Left	93.6860	198.6860	NC
93.6860				198.6860	NC	NC
 1L-4R 4L-1R		Active Left, Active Right	93.8035	198.8035	NC	NC
			93.8035	198.8035	NC	NC
 2L-3R 3L-2R		Active Right, Active Left	93.8035	198.8035	NC	NC
			93.8035	198.8035	NC	NC

"A" indicates the Active Passage Door where applicable.

"P" indicates a swinging Passive Door where handle set matches Passage Door.

(1) Maximum performance when glazed with the appropriate glass thickness.



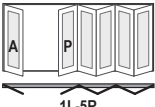
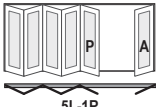
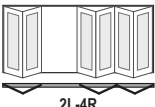
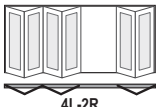

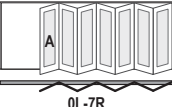
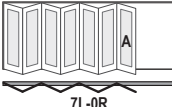
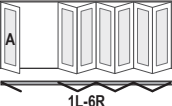
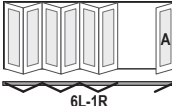
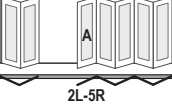
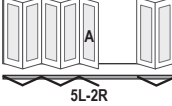
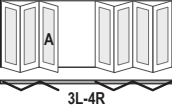
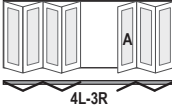
Those noted as NC are not AAMA/WDMA performance certified.

Doors are configured from left to right as viewed from the exterior.

Minimum to Maximum door width dimensions refers to frame to frame dimension.

Contact your local sales representative for more information.



	Panel Configuration	Passage-Door handing	Panel Size (inches)		Performance Class and Grade ¹		
			Min. Width	Max Width	Out-swing Standard Sill	Out-swing U-Channel & Flush Sill	
6-Panel	  0L-6R 6L-0R	No passage door	111.8435	237.8435	NC	NC	
	111.8435		237.8435	NC	NC		
	  1L-5R 5L-1R	Active Left/Passive Right, Passive Left/Active Right	111.9610	237.9610	NC	NC	
	111.9610		237.9610	NC	NC		
	  2L-4R 4L-2R	No passage door	112.1591	238.1591	NC	NC	
	112.1591		238.1591	NC	NC		
	 3L-3R	Option of Active/Passive or Passive/Active	111.9610	237.9610	NC	NC	
	7-Panel	  0L-7R 7L-0R	Active Right, Active Left	130.0010	277.0010	NC	NC
		130.0010		277.0010	NC	NC	
		  1L-6R 6L-1R	Active Left, Active Right	130.1185	277.1185	NC	NC
130.1185		277.1185		NC	NC		
  2L-5R 5L-2R		Active Right, Active Left	130.1185	277.1185	NC	NC	
130.1185			277.1185	NC	NC		
  3L-4R 4L-3R		Active Left, Active Right	130.1185	277.1185	NC	NC	
130.1185			277.1185	NC	NC		

"A" indicates the Active Passage Door where applicable.

"P" indicates a swinging Passive Door where applicable.

(1) Maximum performance when glazed with the appropriate glass thickness.

Those noted as NC are not AAMA/WDMA performance certified.

Doors are configured from left to right as viewed from the exterior.

Minimum to Maximum door width dimensions refers to frame to frame dimension.

Contact your local sales representative for more information.



	Panel Configuration	Passage-Door handing	Panel Size (inches)		Performance Class and Grade ¹	
			Min. Width	Max Width	Out-swing Standard Sill	Out-swing U-Channel & Flush Sill
8-Panel	 0L-8R 8L-0R	No passage door	148.1585	316.1585	NC	NC
	 1L-7R 7L-1R	Active Left/Passive Right, Passive Left/Active Right	148.2760	316.2760	NC	NC
	 2L-6R 6L-2R	No passage door	148.4741	316.4741	NC	NC
	 3L-5R 5L-3R	Option of Active/Passive or Passive/Active	148.2760	316.2760	NC	NC
	 4L-4R	No passage door	148.4741	316.4741	NC	NC
	 1L-8R 8L-1R	Active Left/Passive Right, Passive Left/Active Right	166.4335	355.4335	NC	NC
	 2L-7R 7L-2R	Active Right, Active Left	166.4335	355.4335	NC	NC
	 3L-6R 6L-3R	Option of Active/Passive or Passive/Active	166.4335	355.4335	NC	NC
	 4L-5R 5L-4R	Active Right, Active Left	166.4335	355.4335	NC	NC
	 4L-5R 5L-4R	Active Right, Active Left	166.4335	355.4335	NC	NC

"A" indicates the Active Passage Door where applicable.

"P" indicates a swinging Passive Door where handle set matches Passage Door.

(1) Maximum performance when glazed with the appropriate glass thickness.

Those noted as NC are not AAMA/WDMA performance certified.

Doors are configured from left to right as viewed from the exterior.

Minimum to Maximum door width dimensions refers to frame to frame dimension.

Contact your local sales representative for more information.



Panel Configuration		Passage-Door handing	Panel Size (inches)		Performance Class and Grade ¹	
			Min. Width	Max Width	Out-swing Standard Sill	Out-swing U-Channel & Flush Sill
10-Panel	 2L-8R	No passage door	184.7891	394.7891	NC	NC
	 8L-2R		184.7891	394.7891	NC	NC
	 3L-7R	Option of Active/Passive or Passive/Active	184.5910	394.5910	NC	NC
	 7L-3R		184.5910	394.5910	NC	NC
	 4L-6R	No passage door	184.7891	394.7891	NC	NC
	 6L-4R		184.7891	394.7891	NC	NC
 5L-5R	Option of Active/Passive or Passive/Active	184.5910	394.5910	NC	NC	
11-Panel	 3L-8R	Active Left or Active Right	202.7485	433.7485	NC	NC
	 8L-3R		202.7485	433.7485	NC	NC
	 4L-7R	Active Left or Active Right	202.7485	433.7485	NC	NC
	 7L-4R		202.7485	433.7485	NC	NC
	 5L-6R	Active Left or Active Right	202.7485	433.7485	NC	NC
	 6L-5R		202.7485	433.7485	NC	NC
12-Panel	 4L-8R	No passage door	221.1041	473.1041	NC	NC
	 8L-4R		221.1041	473.1041	NC	NC
	 5L-7R	Option of Active/Passive or Passive/Active	220.9060	472.9060	NC	NC
	 7L-5R		220.9060	472.9060	NC	NC
	 6L-6R	No passage door	221.1041	473.1041	NC	NC

"A" indicates the Active Passage Door where applicable.

"P" indicates a swinging Passive Door where handle set matches Passage Door.

(1) Maximum performance when glazed with the appropriate glass thickness.

Those noted as NC are not AAMA/WDMA performance certified.

Doors are configured from left to right as viewed from the exterior.

Minimum to Maximum door width dimensions refers to frame to frame dimension.

Contact your local sales representative for more information.



	Panel Configuration	Passage-Door handing	Panel Size (inches)		Performance Class and Grade ¹	
			Min. Width	Max Width	Out-swing Standard Sill	Out-swing U-Channel & Flush Sill
13-Panel	5L-8R	Active Left or Active Right	239.0635	512.0635	NC	NC
	8L-5R		239.0635	512.0635	NC	NC
	6L-7R	Active Left or Active Right	239.0635	512.0635	NC	NC
	7L-6R		239.0635	512.0635	NC	NC
14-Panel	6L-8R	No passage door	257.4191	551.4191	NC	NC
	8L-6R		257.4191	551.4191	NC	NC
	7L-7R	Option of Active/Passive or Passive/Active	257.2210	551.2210	NC	NC
15-Panel	7L-8R	Active Left or Active Right	275.3785	590.3785	NC	NC
	8L-7R		275.3785	590.3785	NC	NC
16-Panel	8L-8R	No passage door	293.7341	629.7341	NC	NC

"A" indicates the Active Passage Door where applicable.

"P" indicates a swinging Passive Door where handle set matches Passage Door.

(1) Maximum performance when glazed with the appropriate glass thickness.

Those noted as NC are not AAMA/WDMA performance certified.

Doors are configured from left to right as viewed from the exterior.

Minimum to Maximum door width dimensions refers to frame to frame dimension.

Contact your local sales representative for more information.

Frame

- Extruded aluminum head and jambs with thermal breaks [Block frame].
- Extruded aluminum [Standard sill with thermal breaks] [Flush sill with thermal breaks] [U-channel sill].
- Frame Finish is [Satin Anodized] [Black Anodized].
- Frame Depth 4-1/2"

Door Panels

- Extruded aluminum [Narrow Stiles/Rails] [Wide Stiles/Rails] with thermal breaks.
- Corners are secured with metal fasteners.

Weatherstripping

- Dual-durometer extruded polymer along head and jambs of door frame.
- Extruded pile with quiet fin at top and sides of door panel.
- Dual extruded piles with quiet fin at bottom of door panel on flush and u-channel sills.
- Dual-durometer extruded polymer along standard sill

Glazing System¹

- Quality fully-tempered float glass complying with ASTM C 1048.
- High altitude glazing available.
- Silicone-glazed, 1" double-pane, dual-seal, insulating glass
- [[366/Clear] [366/i89] [270/Clear] Low-E [with argon]]
-or-
- Silicone-glazed, 1-1/4" double-pane, dual-seal, laminated, insulating glass.
- [[366/Clear] [270/Clear] Low-E [with argon]]
-or-
- Silicone-glazed, 1-5/8" triple-pane, dual-seal, insulating glass
- [[366/Clear/180] [366/180/i89] [270/Clear/180] Low-E [with argon]].

Hardware

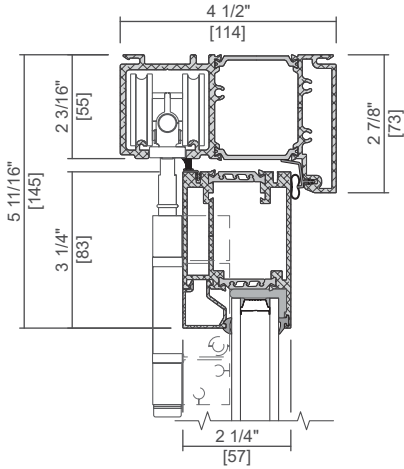
- Handles
 - Contemporary multi-point lock lever with Euro-cylinder in [satin nickel] [black].
- Locks
 - Multi-point locking system with deadbolt and additional locking points at jamb, sill, and head that will engage simultaneously. Lever located at 36" from bottom of panel.
- Passive Panels and Windows
 - - Multi-point lock system with shoot-bolts at the head and sill
 - - Dual Point Handle [without thumb-turn][with thumb-turn]
- Hardware finish is [Satin Nickel] [Matte Black].
- Hardware handle location from bottom of the panel to center of lock thumb turn [frame height >78" is 36"] [frame height <78" is 16"].

(1) Insulating glass with argon is Low-E coated. All other insulating glass is air-filled.



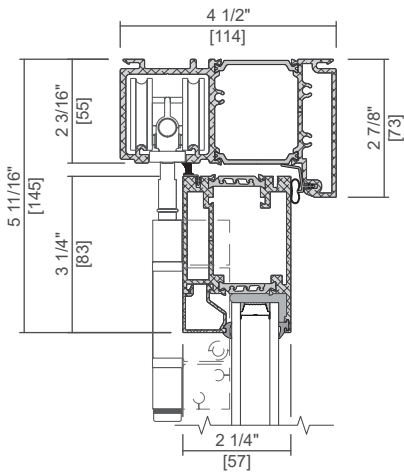
NARROW STILE

Standard Block Frame

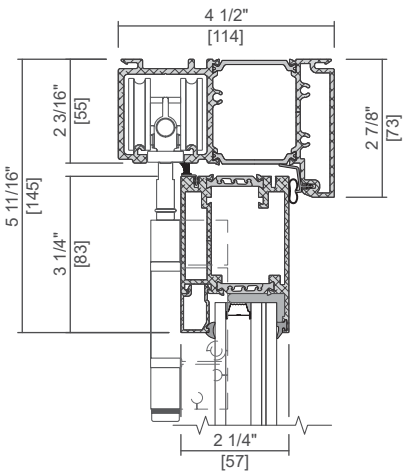


GLAZING OPTIONS

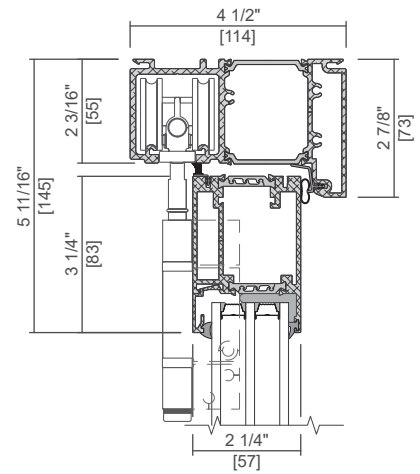
1" Dual IG



1-1/4" Laminated IG

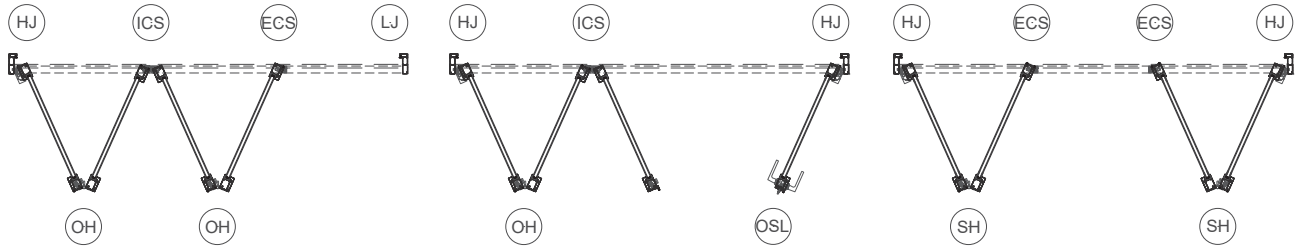


1-5/8" Triple IG



Scale 3" = 1' 0"

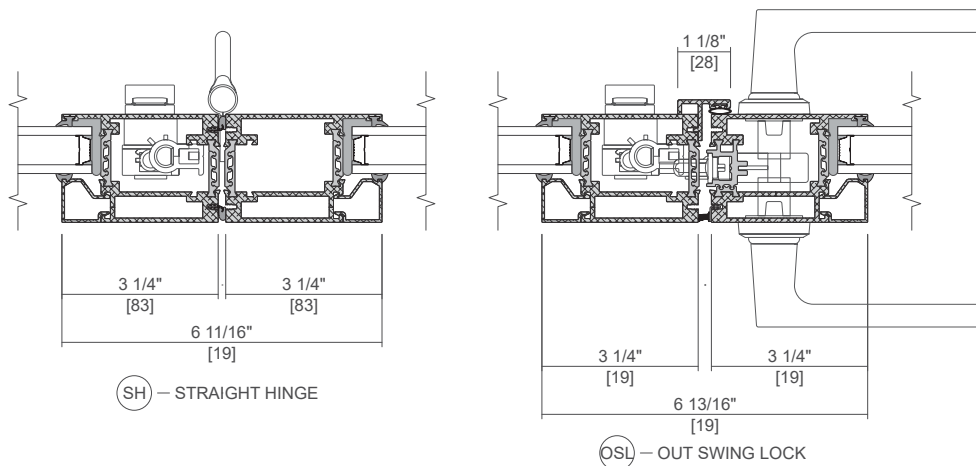
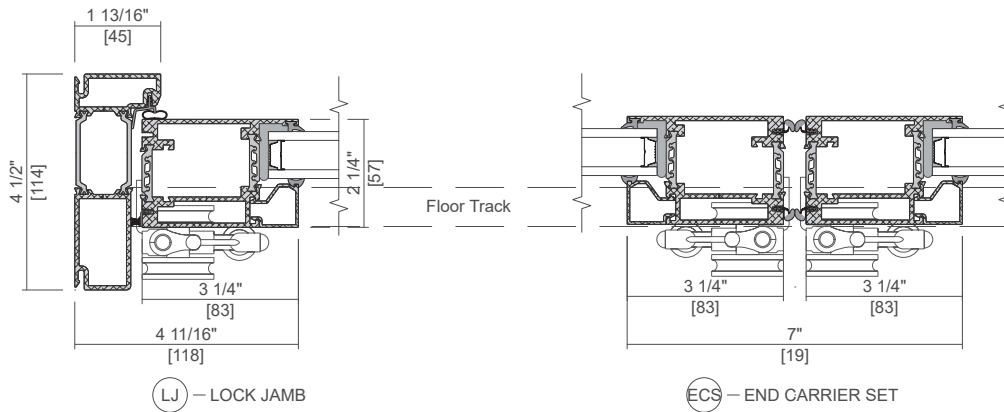
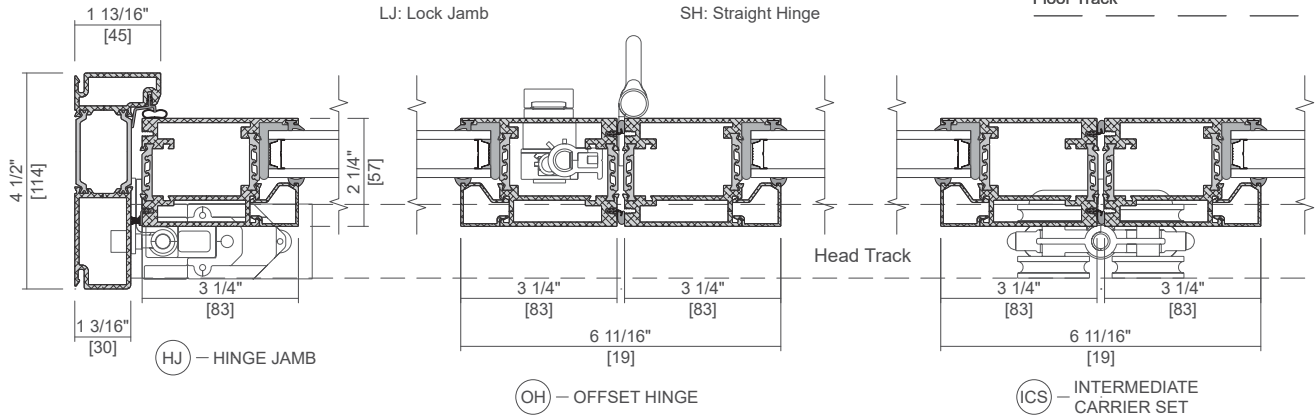
All dimensions are approximate.



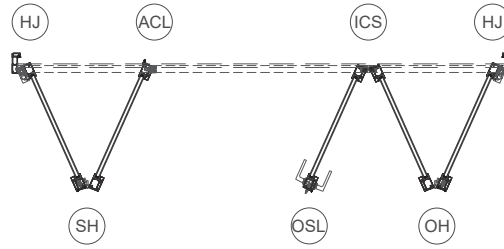
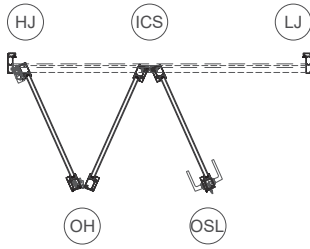
ECS: End Carrier Set
 HJ: Hinged Jamb
 ICS: Intermediate Carrier Set
 LJ: Lock Jamb

LJC: Lock Jamb Carrier
 OSL: Out Swing Lock
 OH: Offset Hinge
 SH: Straight Hinge

Head Track
 Floor Track

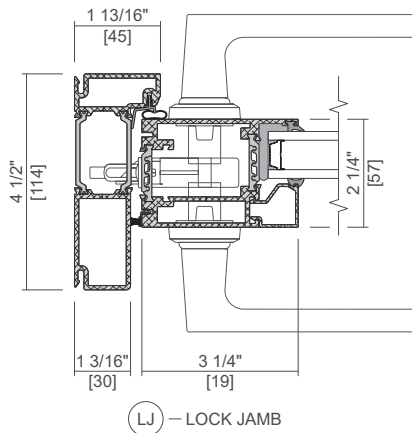
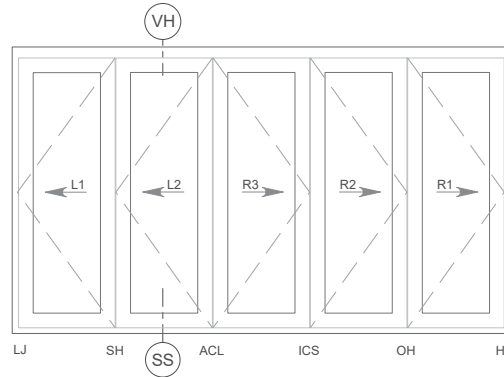
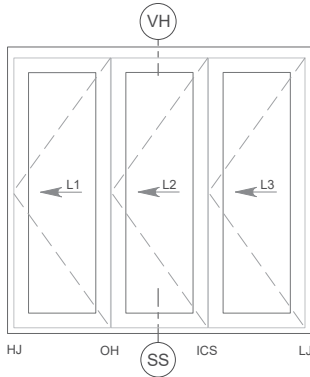


Scale 3" = 1' 0"
 All dimensions are approximate.

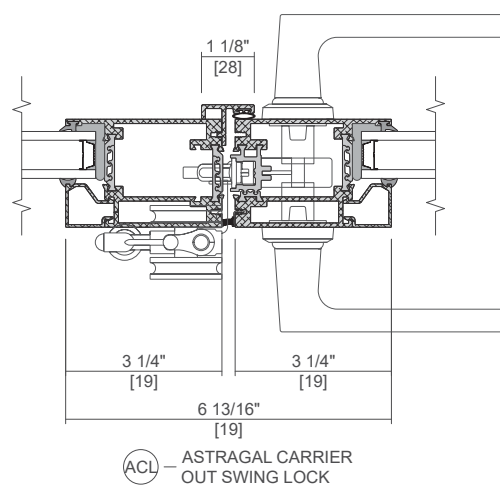


ACL: Astragal Carrier Lock
HJ: Hinged Jamb
ICS: Intermediate Carrier Set

LJ: Lock Jamb
OSL: Out Swing Lock
SH: Straight Hinge

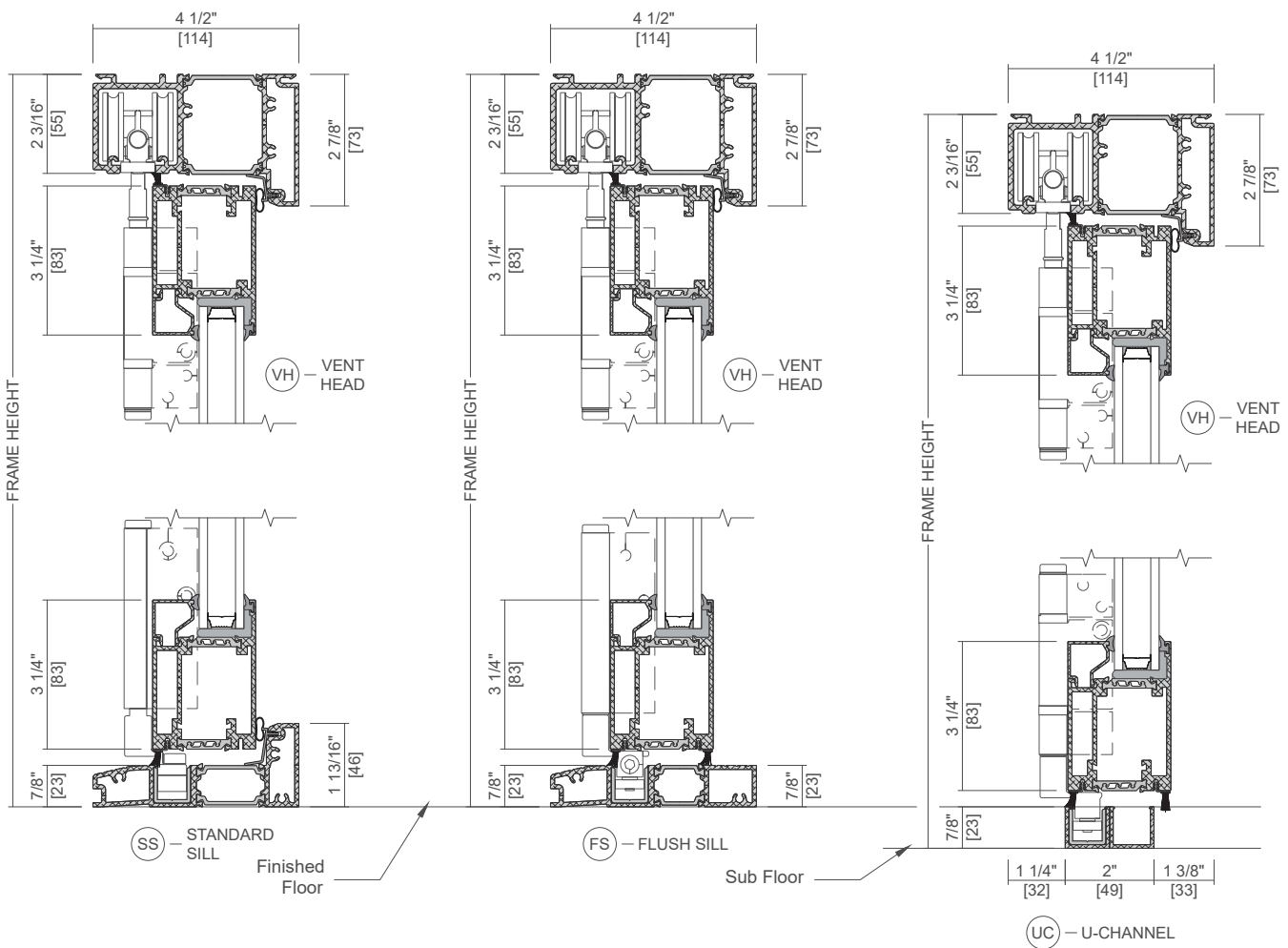
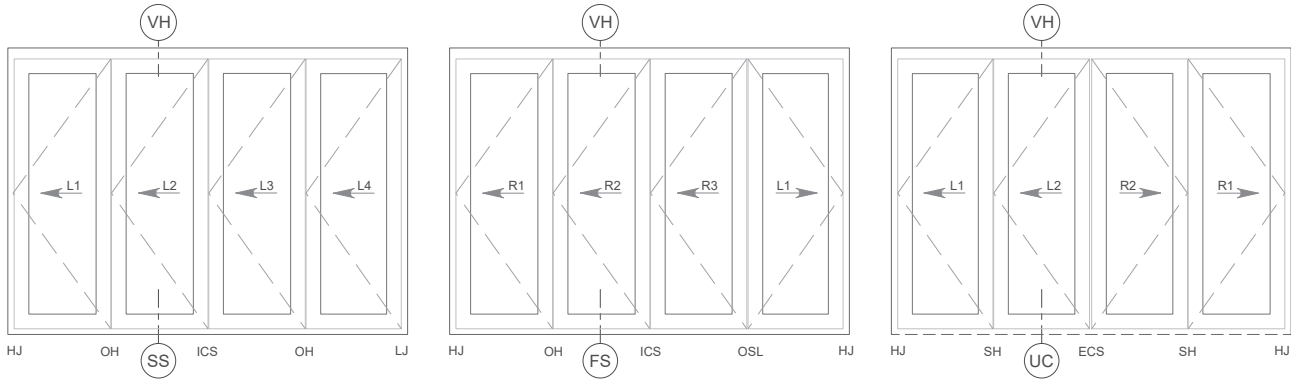


(LJ) - LOCK JAMB



(ACL) - ASTRAGAL CARRIER
OUT SWING LOCK

Scale 3" = 1' 0"
All dimensions are approximate.



Scale 3" = 1' 0"
All dimensions are approximate.