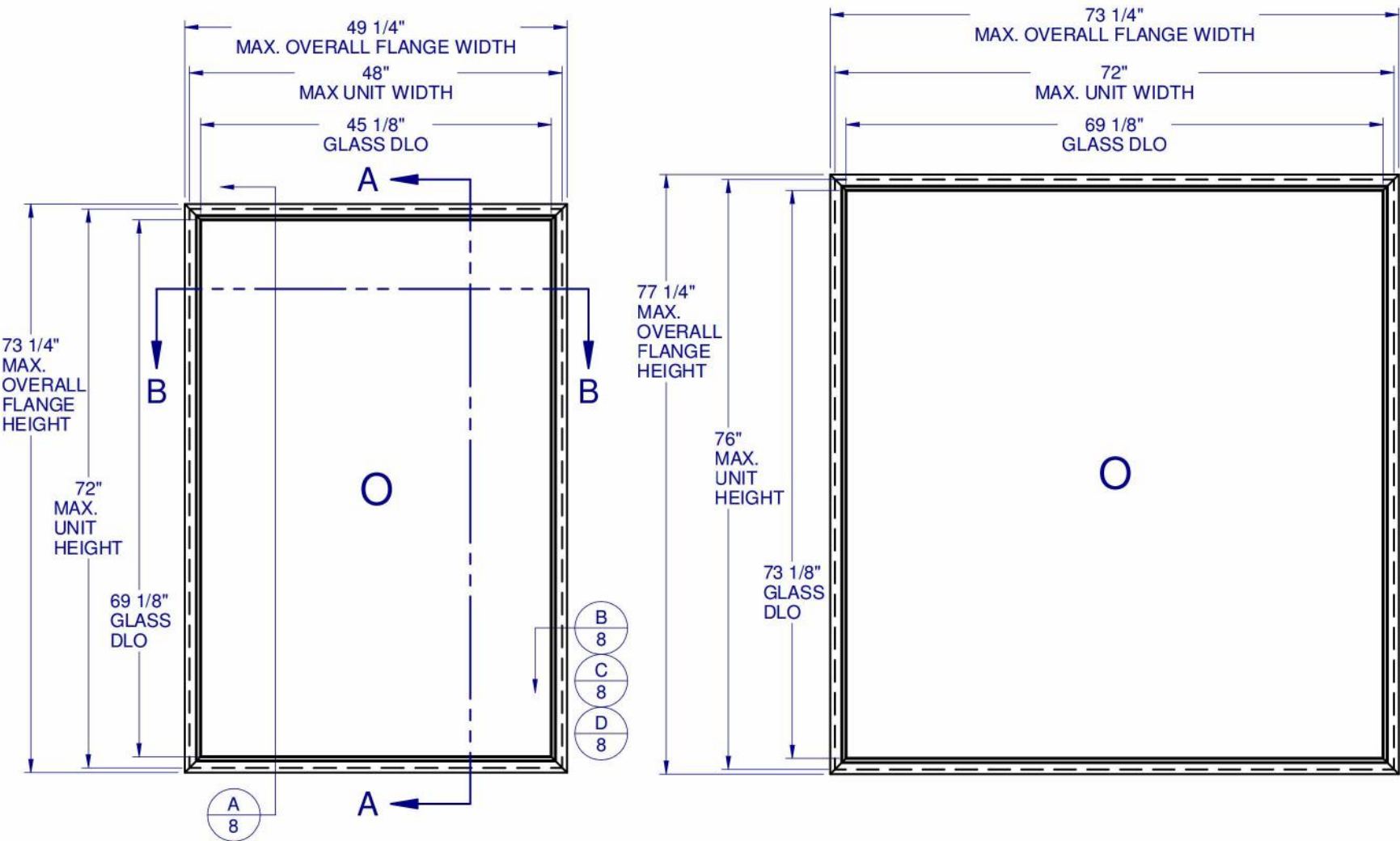


PICTURE WINDOW - LARGE MISSILE IMPACT



GENERAL NOTES:

- 1. THE PRODUCT SHOWN HEREIN IS DESIGNED AND MANUFACTURED TO COMPLY WITH THE FLORIDA BUILDING CODE (FBC), CURRENT EDITION INCLUDING THE HIGH VELOCITY HURRICANE ZONE (HVHZ) AND IS RATED FOR WIND ZONE 4 MISSILE LEVEL D IMPACT USE AS DEFINED IN ASTM E 1996 PER THE FBC.
- 2. GLAZING OPTIONS: (SEE SHEET 3)
- 3. CONFIGURATIONS: "O". ARCHITECTURAL SHAPES INCLUDE, BUT ARE NOT LIMITED TO, THOSE SHOWN ON SHEET 2.
- 4. DESIGN PRESSURE RATING:
  - NEGATIVE DESIGN LOADS BASED ON, TESTED PRESSURE AND GLASS TABLES ASTM E-1300-04.
  - POSITIVE DESIGN LOADS BASED ON, TESTED PRESSURE, WATER INFILTRATION TEST PRESSURE AND GLASS TABLES ASTM E-1300-04.
- 5. ANCHORAGE: THE 33 1/3% STRESS INCREASE HAS NOT BEEN USED IN THE DESIGN OF THIS PRODUCT. SEE SHEET 8 FOR ANCHOR DETAILS. WINDLOAD DURATION FACTOR Cd=1.6 WAS USED FOR WOOD ANCHOR CALCULATIONS.
- 6. PRODUCT APPROVED FOR IMPACT RESISTANCE. SHUTTERS ARE NOT REQUIRED.
- 7. ALL FRAMES ARE FULLY WELDED.
- 8. SERIES / MODEL DESIGNATION PW-8300.
- 9. THE DESIGNATION X AND O STAND FOR THE FOLLOWING:
  - O = FIXED SASH.
- 10. SECTION CALLOUTS APPLY TO ALL ELEVATIONS IN A SIMILAR LOCATION.

Custom WINDOW SYSTEMS  
1900 SW 44TH AVE.  
OCALA, FLORIDA 34474  
WWW.CWS.CC

8300 PVC PICTURE WINDOW IMPACT

				03/30/15	10/29/14	12/06/11	07/07/08	DATE:
			TEF	EMK	ADE	ADE	BY:	
			UPDATED PER 2014 FBC	UPDATED, RECERTIFICATION	UPDATED PER 2010 FBC	UPDATED PER NEW FBC REQ	DESCRIPTION:	REVISIONS
			D	C	B	A	NO.:	

Lucas A. Turner  
2015-04-11  
15:04-04:00



LUCAS A. TURNER, P.E.  
FL PE # 58201  
1239 JABARA AVE.  
NORTH PORT, FL 34288  
PH. 941-380-1574

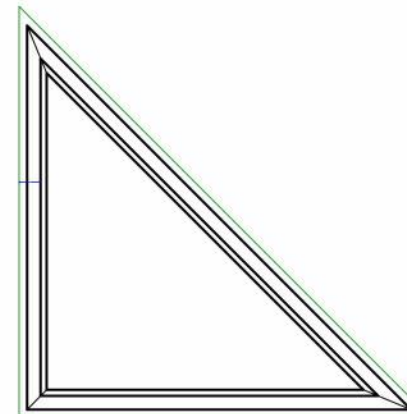
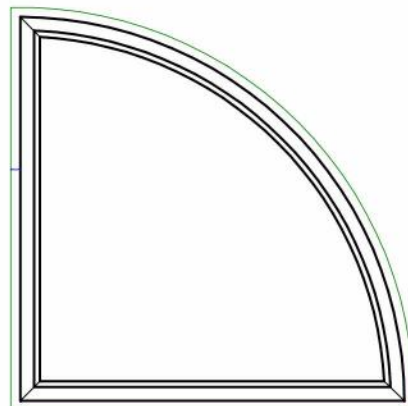
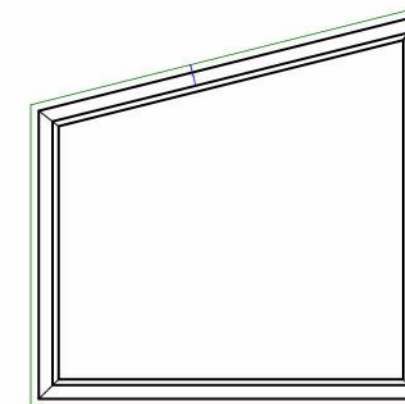
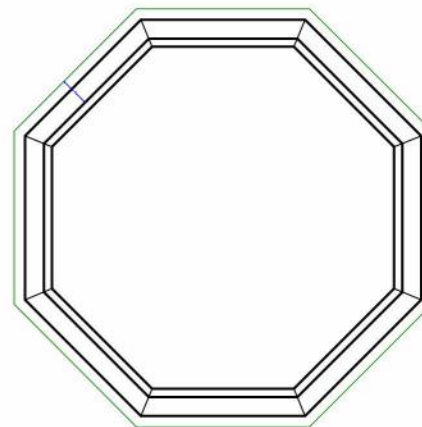
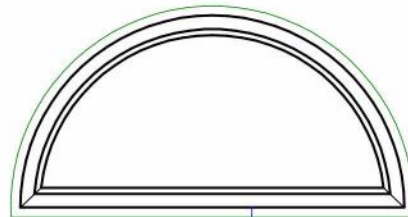
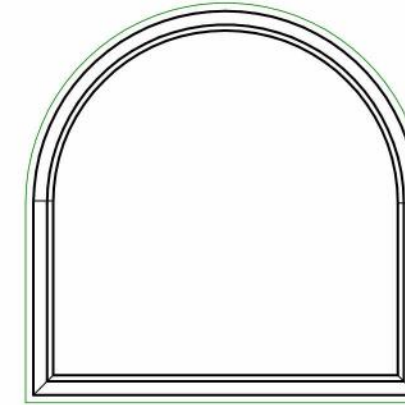
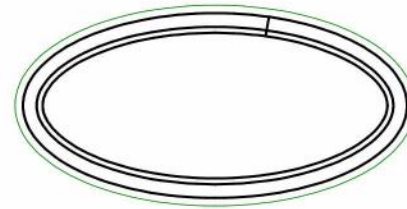
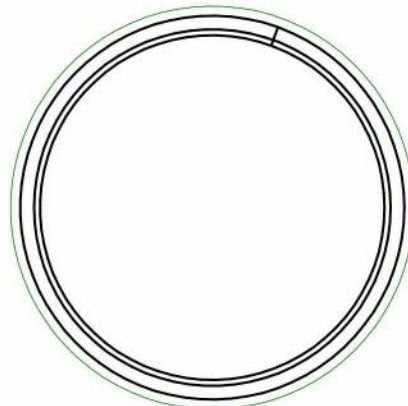
TABLE OF CONTENTS

GENERAL NOTES & ELEVATIONS.....1  
ARCHITECTURAL SHAPES.....2  
GLAZING DETAILS.....3  
SECTION VIEWS.....4  
EXTRUSIONS & B.O.M.....5  
ANCHOR SCHEDULE & NOTES.....6-7  
INSTALLATION DETAILS.....8

LOCATION	MAX. UNIT SIZE	DESIGN PRESSURE RATING	IMPACT RATING
ANY	48" x 72"	+/- 55 PSF	LARGE MISSILE IMPACT
NON-HVHZ	72" x 76"	+/- 65 PSF	
HVHZ		+/- 67.5 PSF	

SHEET DESCRIPTION:	
GENERAL NOTES AND ELEVATIONS	
DRAWN BY:	DATE:
ADE	05/05/07
DWG #:	REV.:
CWS-159	D
SCALE:	SHEET
1:20	1 OF 8





NOTES:

1. SEE SHEETS 6 & 7 FOR DETAILED ANCHOR INSTALLATION REQUIREMENTS.
2. THRU FRAME - MASONRY, WOOD OR METAL OPENING.  
THRU FIN - WOOD OPENING.
3. OVERALL SIZE MUST NOT EXCEED THE MAX. WIDTH AND HEIGHT OF  
RECTANGULAR WINDOWS ON SHEET 1.
4. ANCHOR SPACING FOR ARCHITECTUAL FLANGE AND FIN WINDOWS  
MUST FOLLOW THE LAYOUTS SHOWN ON SHEETS 6 & 7, WITH ANCHOR  
SPACING MEASURED ALONG THE LENGTH OF THE PRODUCT.

## 8300 PVC PICTURE WINDOW IMPACT

D	UPDATED PER 2014 FBC	TEF	03/30/15		
C	UPDATED, RECERTIFICATION	EMK	10/29/14		
B	UPDATED PER 2010 FBC	ADE	12/06/11		
A	UPDATED PER NEW FBC REQ	ADE	07/07/08		
NO.:	DESCRIPTION:	BY:	DATE:	REVISIONS	



22  
4/11/2015

LUCAS A. TURNER, P.E.  
FL PE # 58201  
1239 JABARA AVE.  
NORTH PORT, FL 34288  
PH. 941-380-1574

**SHEET DESCRIPTION:**

## ARCHITECTURAL SHAPES

DRAWN BY: <b>ADE</b>	DATE: <b>05/05/07</b>
DWG #: <b>CWS-159</b>	REV.: <b>D</b>
SCALE: <b>1:1</b>	<b>SHEET</b> <b>2 OF 8</b>





8300 PVC  
PICTURE WINDOW  
IMPACT

NO.	DESCRIPTION:	BY:	DATE:
D	UPDATED PER 2014 FBC	TEF	03/30/15
C	UPDATED, RECERTIFICATION	EMK	10/29/14
B	UPDATED PER 2010 FBC	ADE	12/06/11
A	UPDATED PER NEW FBC REQ	ADE	07/07/08

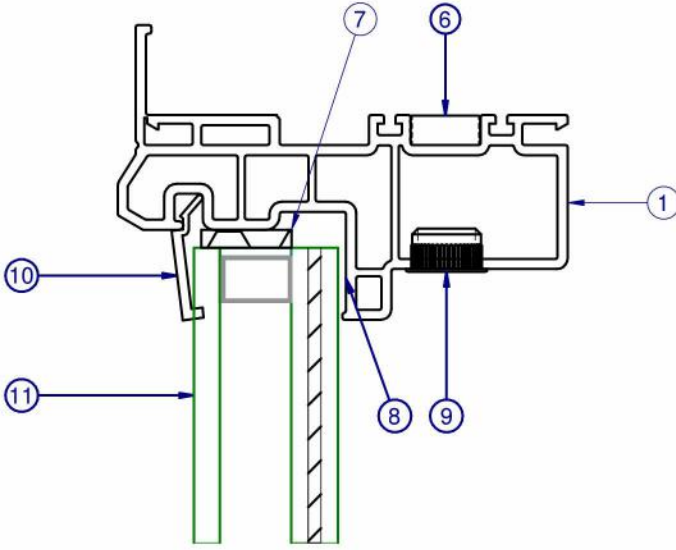


LUCAS A. TURNER, P.E.  
FL PE # 58201  
1239 JABARA AVE.  
NORTH PORT, FL 34288  
PH. 941-380-1574

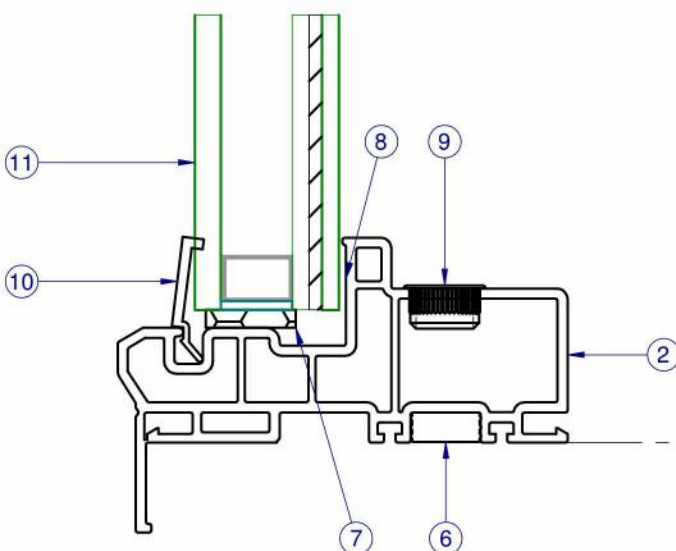
SHEET DESCRIPTION:

SECTION VIEWS

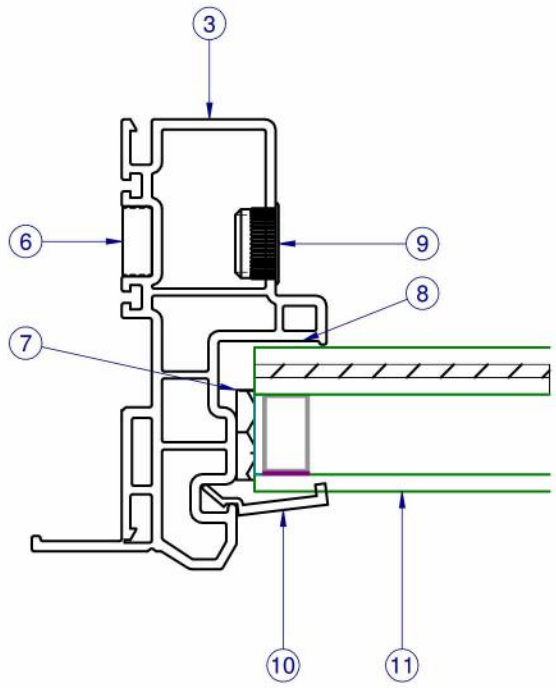
DRAWN BY:	DATE:
ADE	05/05/07
DWG #:	REV.:
CWS-159	D
SCALE:	SHEET
1:1.33	4 OF 8



INTERIOR

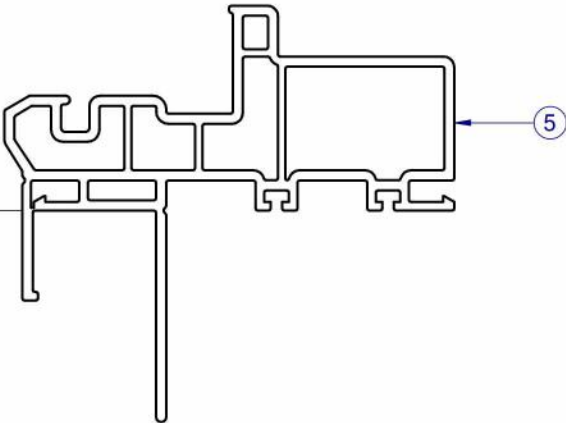
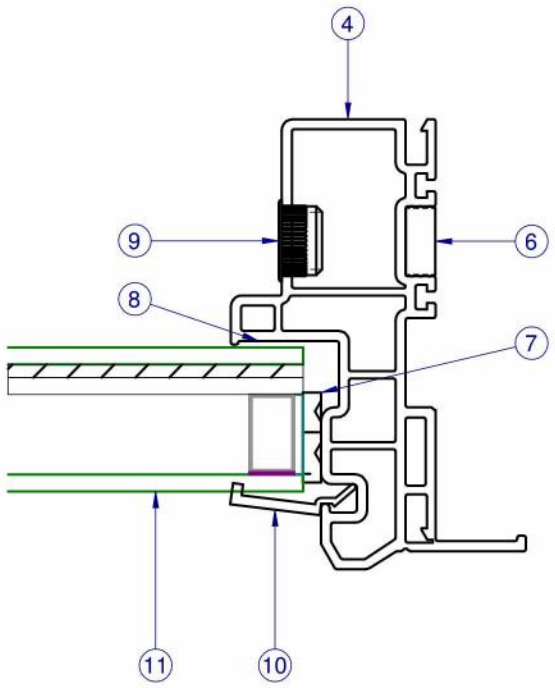


SECTION VIEW A-A



INTERIOR

SECTION VIEW B-B



ALTERNATE FIN FRAME













8300 PVC  
PICTURE WINDOW  
IMPACT

				03/30/15	TEF	EMK	10/29/14	12/06/11	07/07/08	DATE:
				UPDATED PER 2014 FBC	D	C	B	A	NO.:	DESCRIPTION:
				UPDATED, RECERTIFICATION						REVISIONS
				UPDATED PER 2010 FBC						
				UPDATED PER NEW FBC REQ						



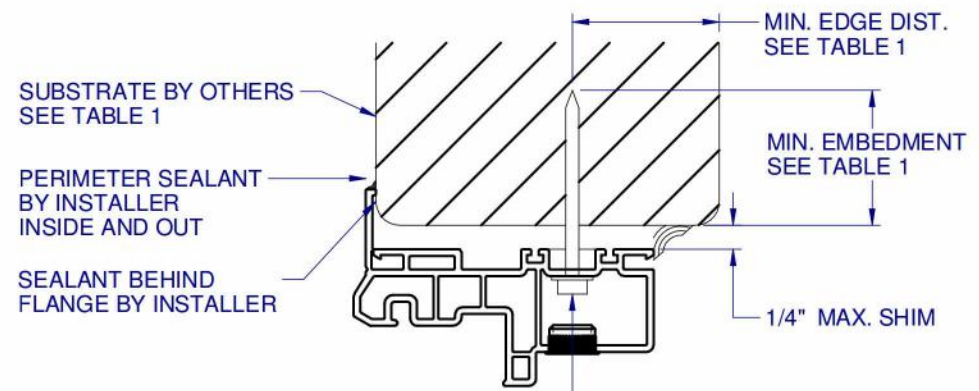
LUCAS A. TURNER, P.E.  
FL PE # 58201  
1239 JABARA AVE.  
NORTH PORT, FL 34288  
PH. 941-380-1574

SHEET DESCRIPTION:

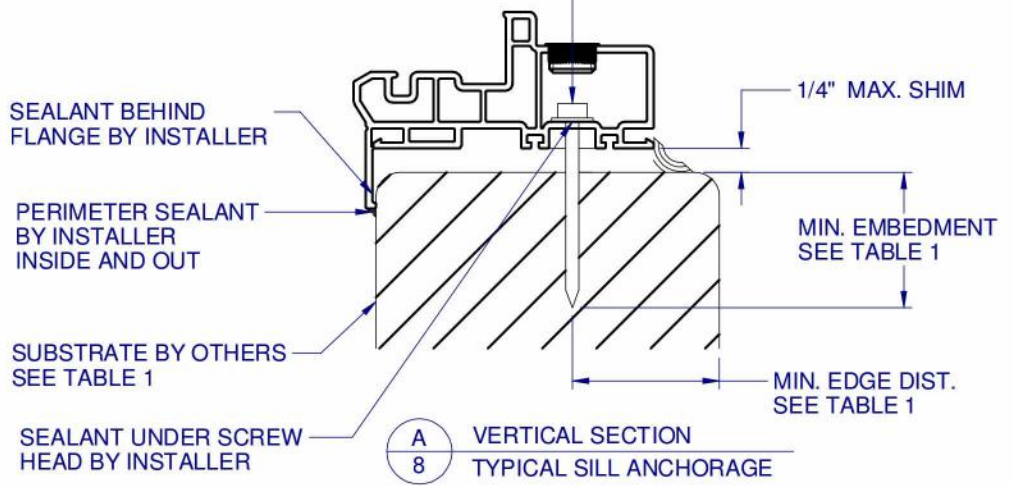
INSTALLATION DETAILS

DRAWN BY:	DATE:
ADE	05/05/07
DWG #:	REV.:
CWS-159	D
SCALE:	SHEET
1:2	8 OF 8

TYPICAL HEAD ANCHORAGE



INSTALLATION ANCHOR  
SEE TABLE 1



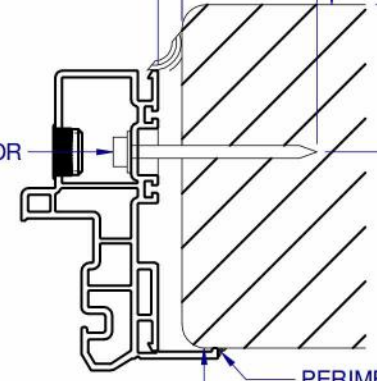
MIN. EMBEDMENT  
SEE TABLE 1

1/4" MAX. SHIM

SUBSTRATE  
BY OTHERS  
SEE TABLE 1

MIN. EDGE DIST.  
SEE TABLE 1

INSTALLATION ANCHOR  
SEE TABLE 1



B  
8 HORIZONTAL SECTION  
TYPICAL JAMB ANCHORAGE

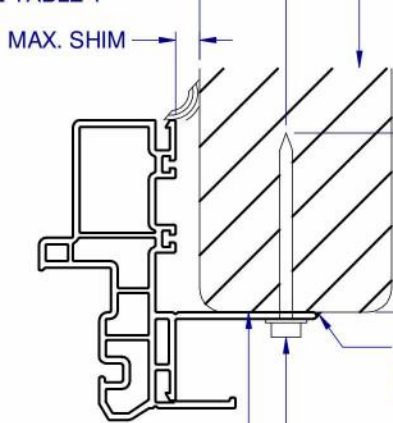
MIN. EDGE DIST.  
SEE TABLE 1

1/4" MAX. SHIM

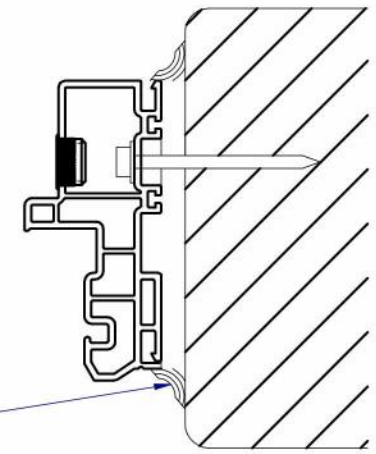
SUBSTRATE  
BY OTHERS  
SEE TABLE 1

MIN. EMBEDMENT  
SEE TABLE 1

PERIMETER SEALANT  
BY INSTALLER  
INSIDE AND OUT  
INSTALLATION ANCHOR  
SEE TABLE 1  
SEALANT BEHIND  
FIN BY INSTALLER



C  
8 HORIZONTAL SECTION  
TYPICAL FIN ANCHORAGE  
HEAD AND SILL SIMILAR FOR FIN INSTALLATION



D  
8 HORIZONTAL SECTION  
BOX FRAME INSTALLATION  
HEAD AND SILL SIMILAR FOR BOX INSTALLATION

FLANGE REMOVAL NOTE: PARTIALLY OR FULLY REMOVING THE FLANGE, UP TO AND INCLUDING A BOX-FRAME APPLICATION IS ACCEPTABLE PROVIDED:

- MIN. 1/4" FILLET OF CONSTRUCTION-GRADE ADHESIVE CAULK IS APPLIED INSIDE AND OUT, FULL PERIMETER, BY INSTALLER.
- PRODUCT ANCHORAGE IS IN ACCORDANCE WITH REQUIREMENTS AS SHOWN FOR FLANGE WINDOWS.

TABLE 1: APPROVED INSTALLATION FASTENERS

FRAME TYPE	SUBSTRATE TYPE	ANCHOR TYPE	MIN. EMBEDMENT	MIN. EDGE DIST.
FLANGE	CONCRETE (2.0 KSI MIN.)	3/16" ITW TAPCON	1-1/2"	1-1/8"
FLANGE	HOLLOW OR GROUT-FILLED CMU (117 PCF MIN.)	3/16" ITW TAPCON	1"	2"
FLANGE	CONCRETE (2.85 KSI MIN.)	3/16" ELCO ULTRACON	1"	1"
FLANGE	GROUT-FILLED CMU (ASTM C-90)	3/16" ELCO ULTRACON	1-1/4"	2-1/2"
FLANGE	2X MIN. SOUTHERN PINE (G=0.55)	3/16" ITW TAPCON OR ELCO ULTRACON	1-3/8"	7/8"
FLANGE	2X MIN. SOUTHERN PINE (G=0.55)	#10 WOOD SCREW	1-3/8"	7/8"
FLANGE	16 GAUGE (0.060") MIN. STEEL STUD (33 KSI YIELD MIN.)	#10-16 HILTI KWIK-FLEX OR ITW TEKS SELF-DRILLING SCREW	FULL THREAD THRU 0.060"	7/16"
FLANGE	1/8" ALUM. (6063-T5 MIN.) OR 1/8" STEEL (33 KSI MIN.)	#10 GRADE 5 SELF-TAPPING / DRILLING SCREW	FULL THREAD THRU 0.125"	7/16"
FIN	2X MIN. SOUTHERN PINE (G=0.55)	#8 WOOD SCREW	1-1/2"	7/16"