

# Bell Creek Nature Preserve

Conservation  
and  
Environmental Lands Management  
Department

[HCFLGov.net](http://HCFLGov.net)  
813-672-7876

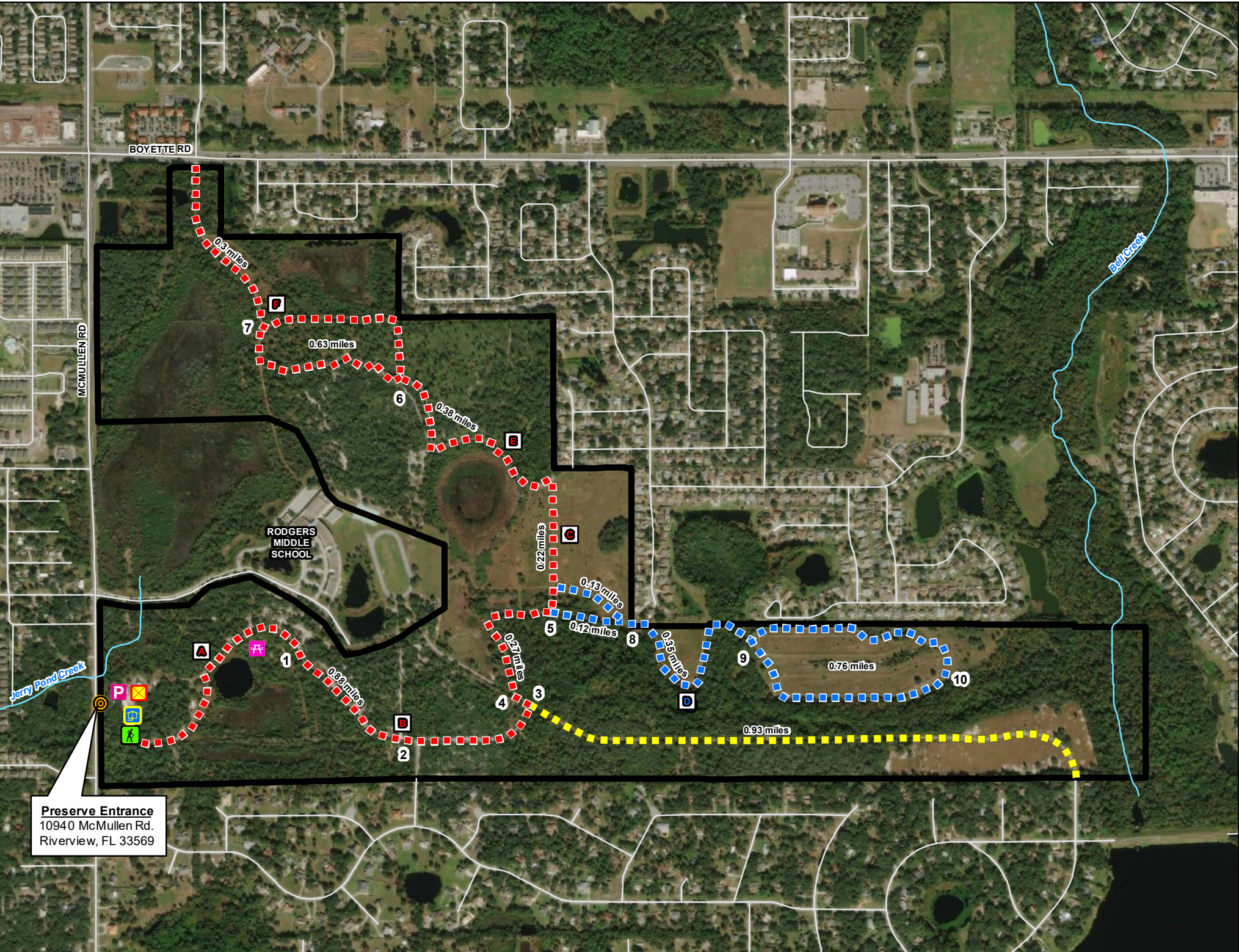
### LEGEND

- Preserve Entrance
- Preserve Boundary
- Parking
- Kiosk
- Trailhead
- Picnic Table
- Office Complex
- Streams
- Trail Marker
- Audio Tour

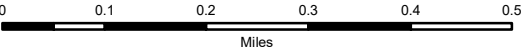
### PUBLIC TRAILS

#### Hiking Only Trails

- North (Red) Loop
- Yellow Spur
- Blue Loop



**Preserve Entrance**  
10940 McMullen Rd.  
Riverview, FL 33569



\*Navigate map with a mobile map app, such as Avenza\*