







Balm Boyette Scrub Nature Preserve

Conservation
and
Environmental Lands Management
Department

HCFLGov.net


813-672-7876

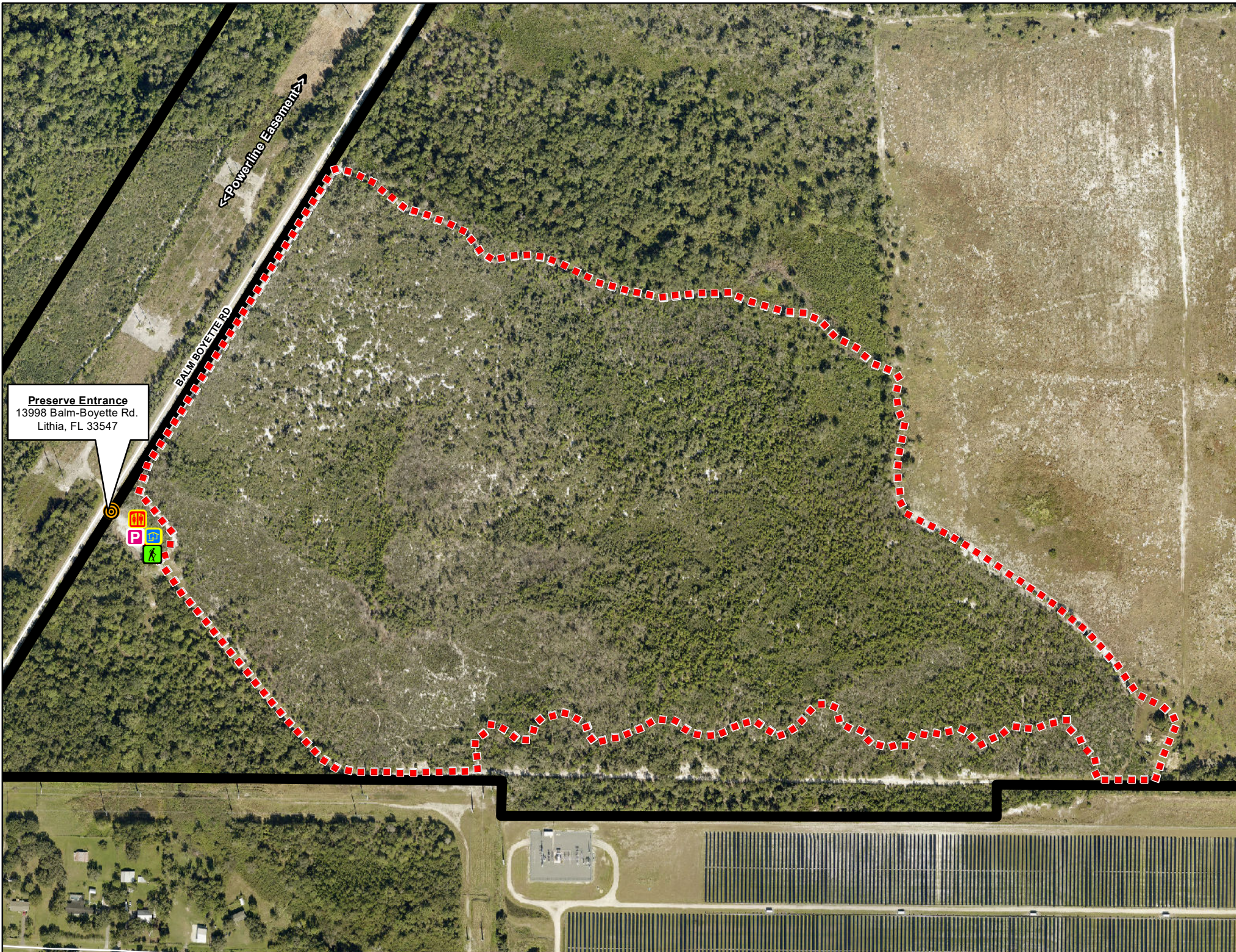
LEGEND

-  Preserve Entrance
-  Preserve Boundary
-  Parking
-  Restroom
-  Trailhead
-  Kiosk

PUBLIC TRAILS

Hiking Only Trail

-  Red Trail - 1.95 miles



Preserve Entrance
13998 Balm-Boyette Rd.
Lithia, FL 33547



0 0.04 0.08 0.12 0.16 0.2 Miles

Navigate map with a mobile map app, such as Avenza