







Alderman's Ford Nature Preserve



Conservation
and
Environmental Lands Management
Department
HCFLGov.net
813-672-7876

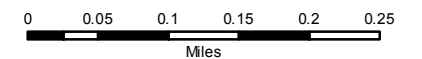
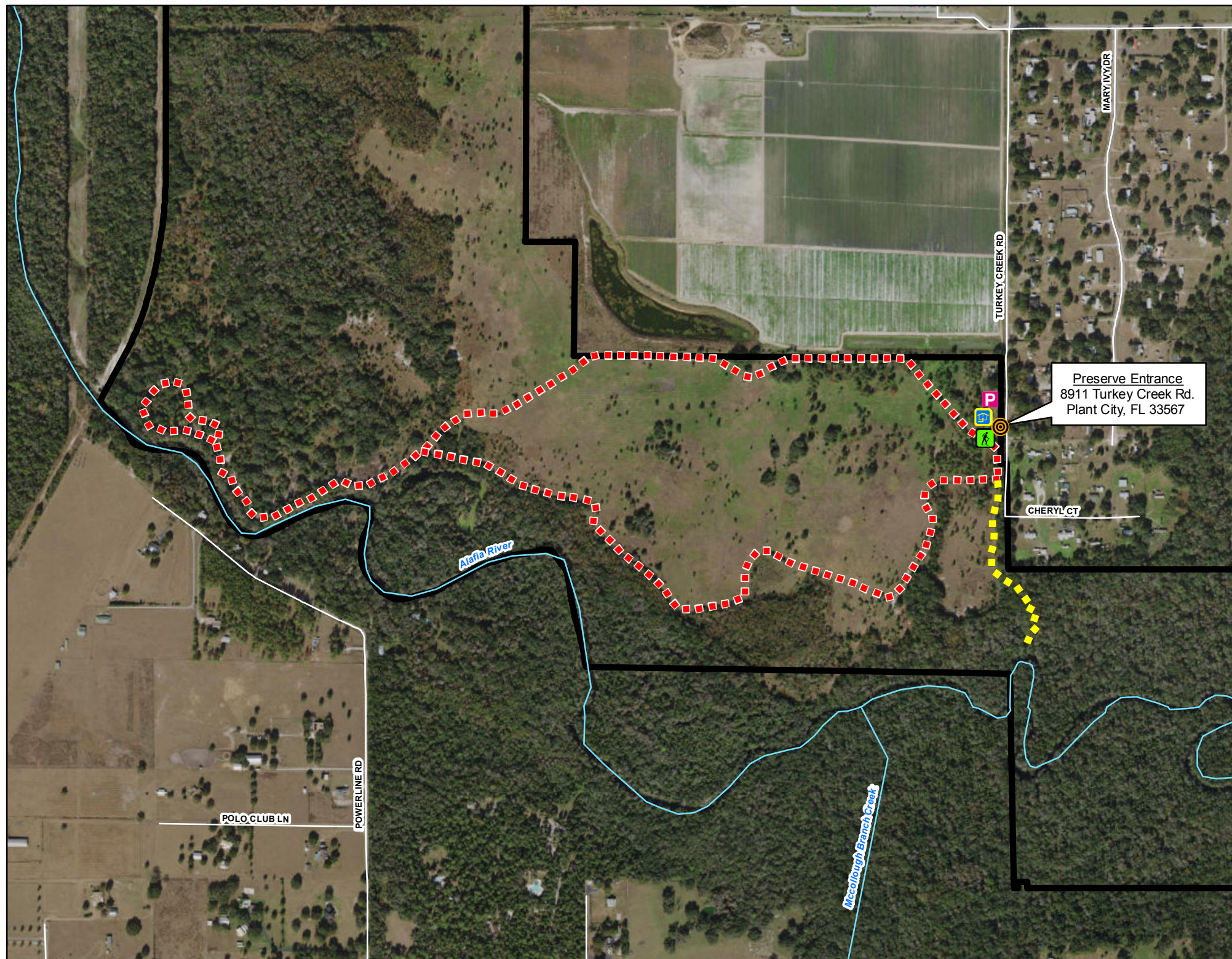
LEGEND

-  Preserve Entrance
-  Preserve Boundary
-  Parking
-  Kiosk
-  Trailhead
-  Streams

PUBLIC TRAILS

Hiking Only Trails

-  Red Loops - 2.3 miles
-  Yellow Spur - 0.2 miles



Navigate map with a mobile map app, such as Avenza