

Did you know?



Hillsborough
County Florida



Hillsborough
County Florida



Hillsborough County's
Pavement Management
Program is responsible for
the preservation of
County roads.
The program maintains
and repairs over
7,300 miles
of roadway lanes.



The most common reasons
for pavement repairs are
water intrusion, stress from heavy
vehicles, expansion and
contraction from seasonal
temperature changes, and
sun exposure.



Concerns about any
Hillsborough County-maintained
pavement can be reported online
HCFLGov.net/AtYourService
or by calling
Public Works' Customer Service at
(813) 635-5400.

Engineering & Operations

Pavement Management Program



Pavement Preservation Program

County roads are routinely evaluated to assess pavement condition. Inspectors look for several specific road issues, including road settlement, cracking, patching, potholes, and ride quality. The pavement preservation program aims to preserve existing roadways to extend their useful life, ultimately reducing the cost of extensive repairs and improving safety.

Treatment Options

Routine Maintenance:

Debris removal, street sweeping, and patching.

Milling and Overlay:

Typically replaces up to 2 inches of the existing asphalt with new asphalt.

Full Depth Reconstruction:

Removal and replacement of existing pavement surface and base.

Annual Inspection and Prioritization Process

27,000+ individual roadway segments are inspected* for deficiencies on a three-year cycle and assigned a pavement condition index (PCI) score.**

Roadway segments are grouped into neighborhoods (local roads) and corridors (major roads).

Local road groups are prioritized in order of condition (PCI score).

Major road groups are prioritized by condition and traffic volume.

* Inspections are conducted in compliance with Governmental Accounting Standards Board (GASB) Statement 34

** PCI scores (0-100) are aggregated into a weighted average (by area) for each group.

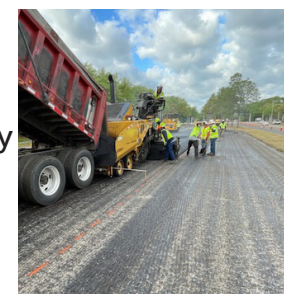


Public Works' response to road condition service requests



1. Patching or repairs are completed as necessary.

2. If the damage is extensive, the road may be considered for overlay or reconstruction through the County's Capital Improvement Program (CIP).



3. CIP resurfacing projects are planned based on the annual budget.

