



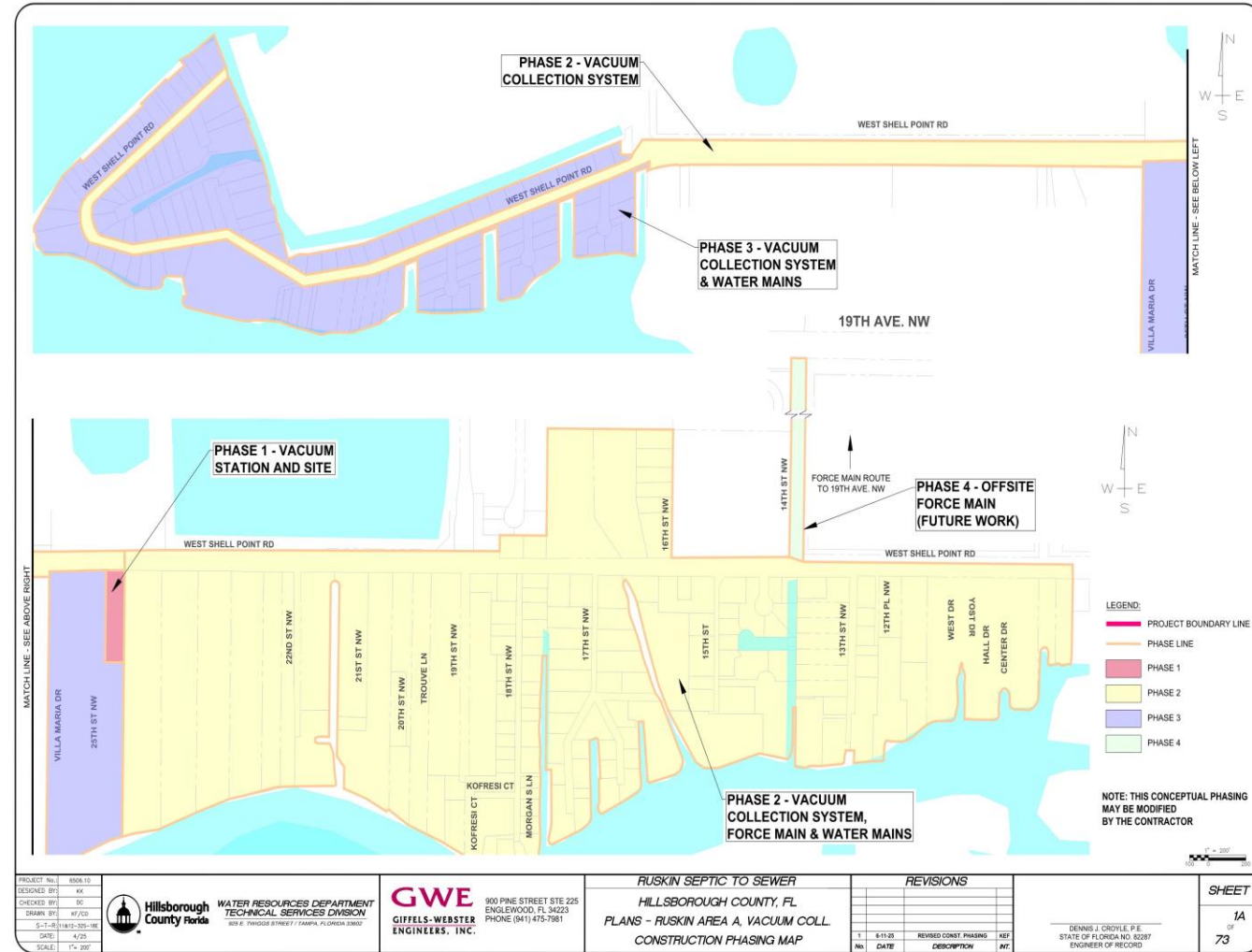
**Hillsborough
County** Florida

Project Number: *C10296000*
**Ruskin Area A Septic-to-Sewer (S2S)
Conversion Project
Construction Information Overview**

Hillsborough County
Water Resources Department
Public Utilities
2025

Project Purpose

- Countywide program to improve water and sewer service
- Protect water quality in Tampa Bay natural water systems by replacing septic systems
- Project scope:
 - Vacuum sewer pump station
 - Sewer force main
 - Vacuum collection system
 - Abandonment of existing low-pressure sewer system
 - Replacement of the existing asbestos concrete water main
 - Roadway restoration throughout the project area



Project Team



Hillsborough
County Florida

GWE
Giffels-Webster
Engineers, Inc.



valerin

Public Utilities – Water Resources Department (Owner)

- Overall management, operation and maintenance
- Administer available Wastewater and Water Quality grants and American Rescue Plan Act (ARPA) funding

Engineering Team

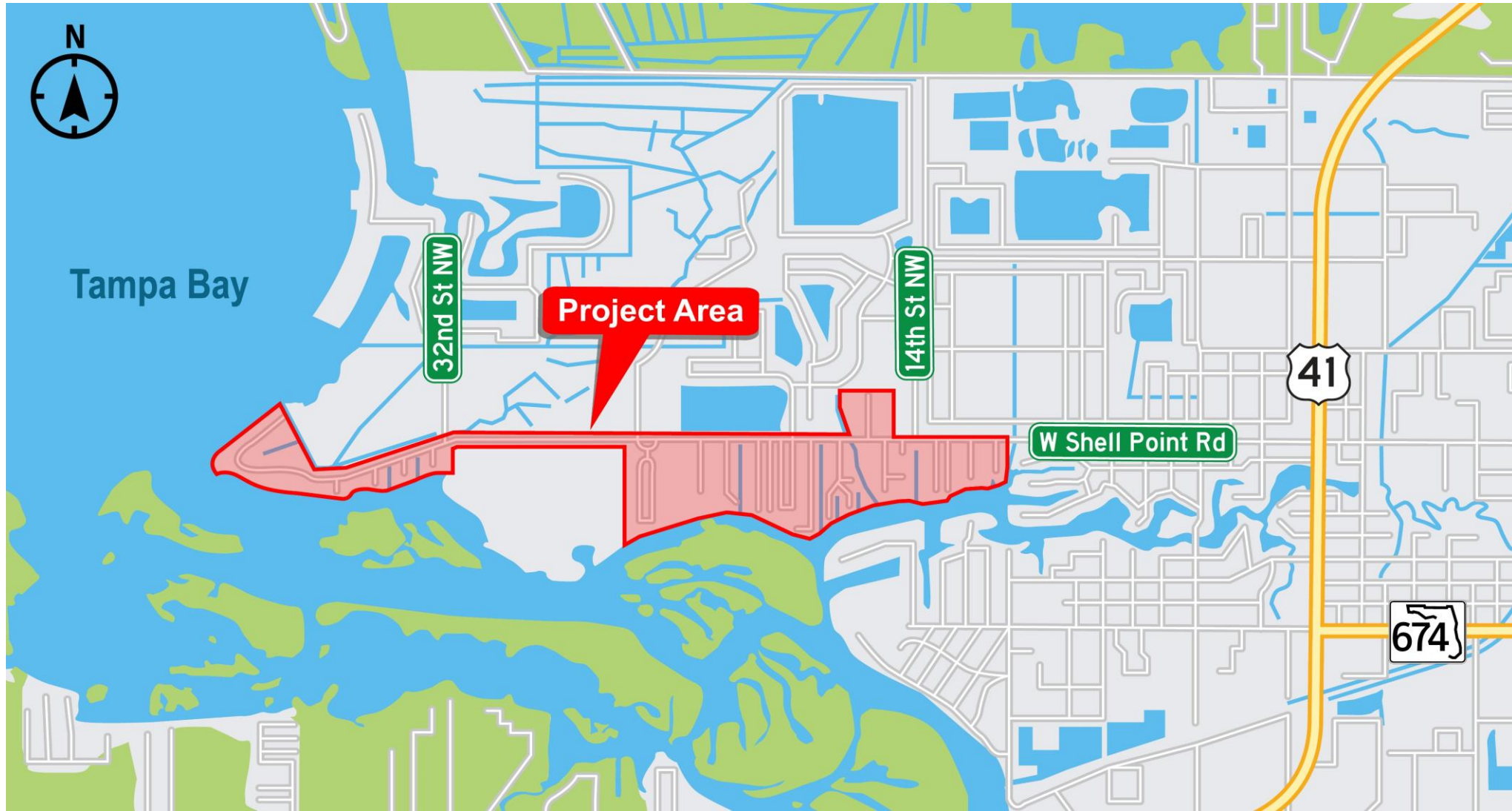
- Engineering design
- Construction Engineering and Inspection (CEI)

Construction Manager At-Risk (CMAR) Firm

- Responsible for construction, testing, and startup of the Ruskin Area A septic to sewer project
- Public Information (Valerin)



Project Boundaries – Area A



Project Cost and Funding Sources

Project Cost Approx: \$34.5 Million

Funding Sources:

- CIP – Hillsborough County Capital Improvement Program Funds
- ARPA - American Rescue Plan Act
- FDEP - FL Dept of Environmental Protection Wastewater Grant



Project Information

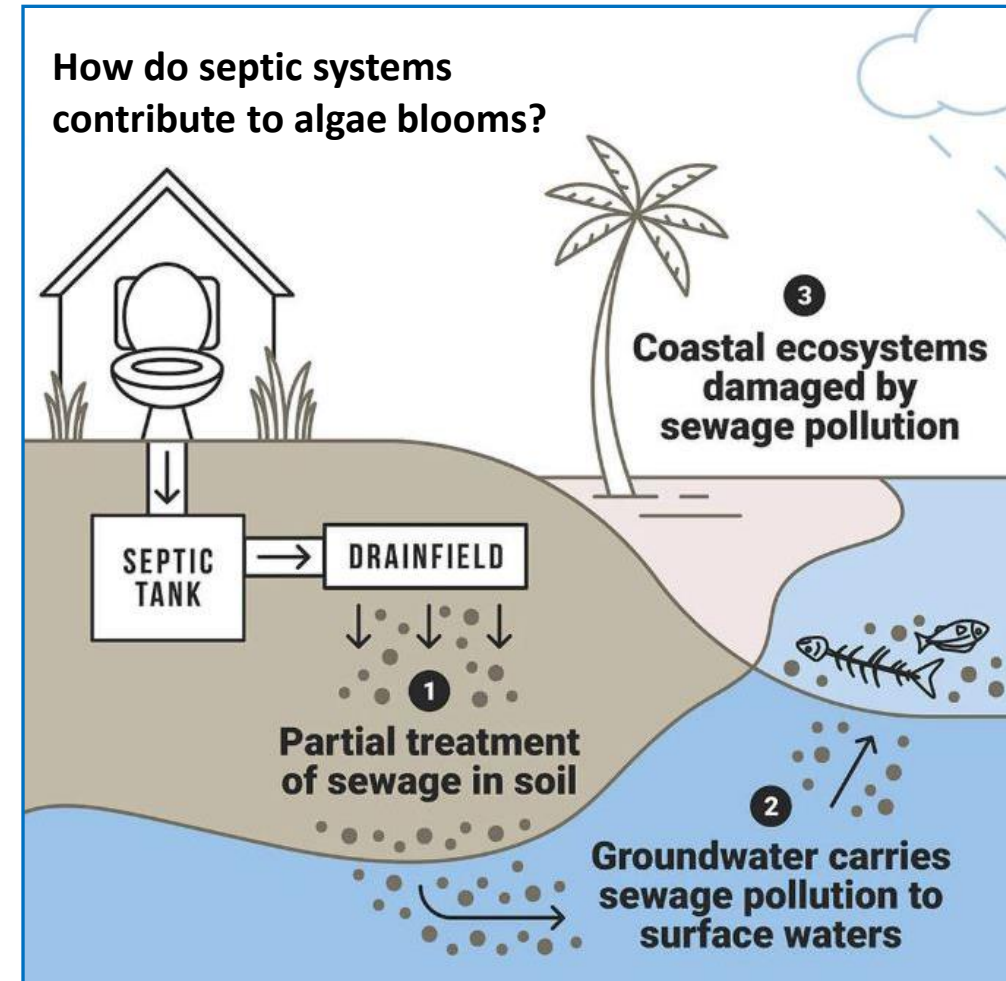
- **Why** should I convert to vacuum sewer?
- **What** happens when I convert?
- **When** will construction begin and end on this project?
- **How** will the project be constructed?



Why Should I Convert to Vacuum Sewer?

Septic System Environmental Impacts

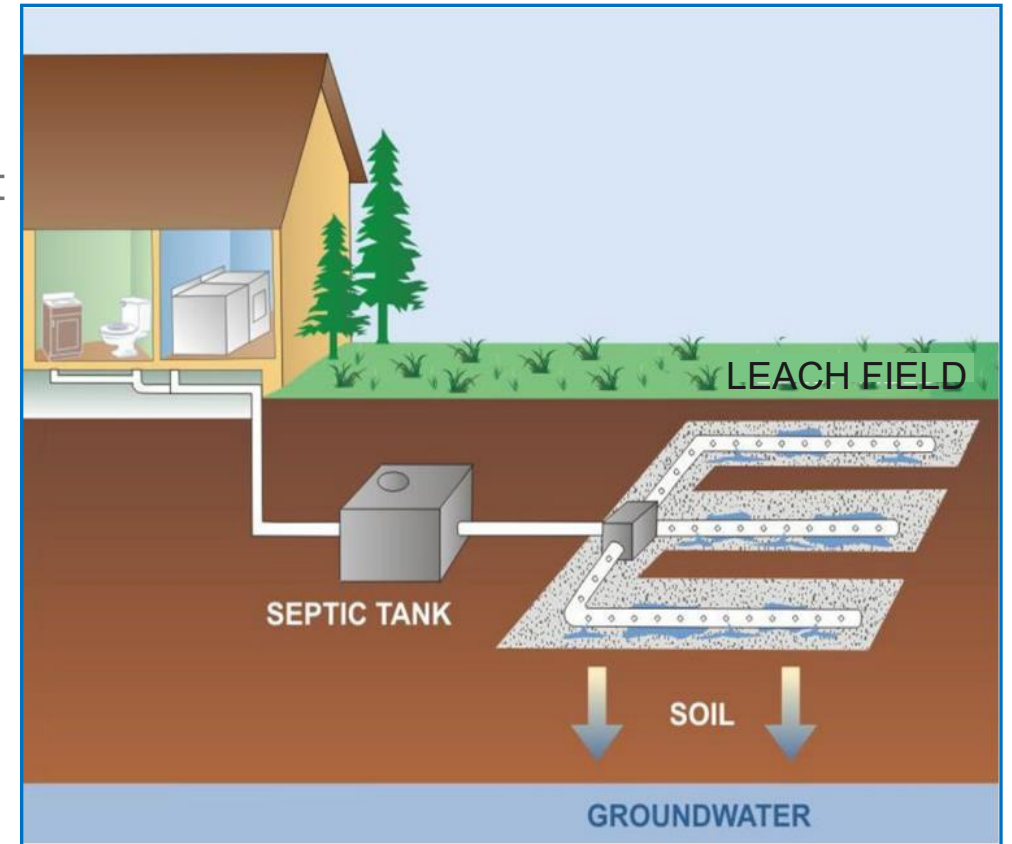
- Higher levels of nutrients in water bodies results in algae blooms.
- Significant algae blooms remove oxygen and can have a detrimental effect on fish, birds, and mammals.
- Recreational and commercial activities may also be restricted in these impacted water bodies.



Nutrient Overload Pollution

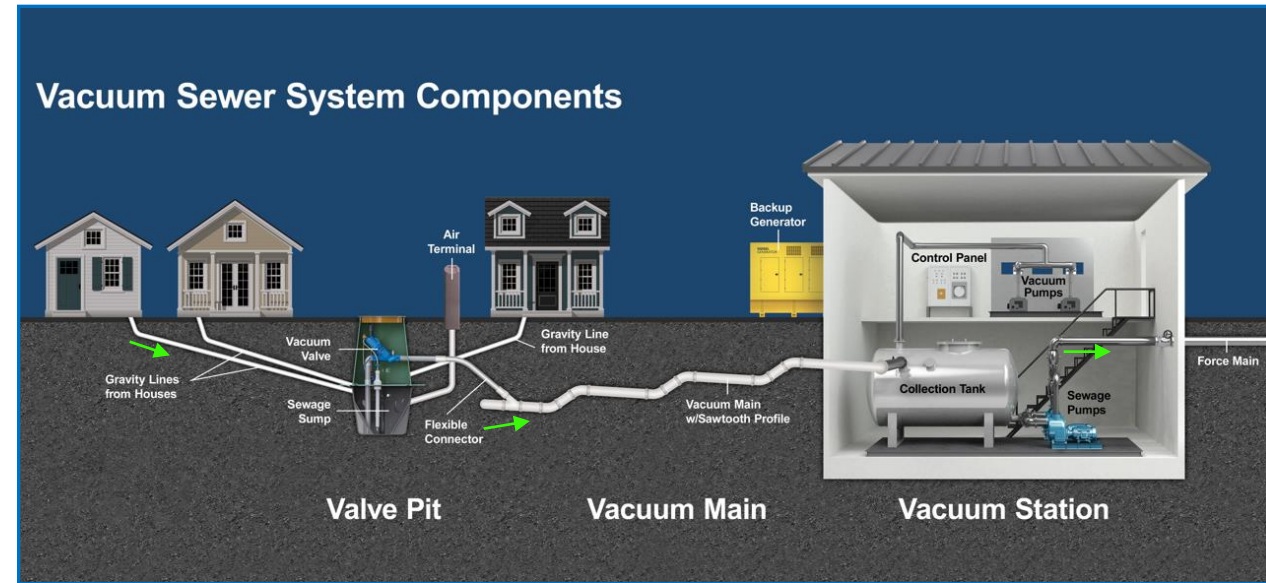
Why Should I Convert from Septic to Sewer

- The Ruskin area is currently served by a mixture of low-pressure sewer systems (LPSS) and on-site septic systems.
- LPSS systems are maintenance-intensive and prone to catastrophic failure during hurricanes.
- Many of the septic systems are old, failing, and do not meet current environmental standards.
- Replacing the LPSS system and septic systems will help reduce nutrient pollution and improve water quality in the Ruskin Inlet, Little Manatee River, and Tampa Bay.
- Installation of sewer system improves property values.
- Vacuum sewer systems are more reliable and require less maintenance.
- Conversion to the vacuum sewer supports a Countywide program to protect and improve the quality of our region's natural water systems by eliminating septic tanks in areas around the bay.



What is a Vacuum Sewer Collection System

A vacuum collection system is a completely closed system, which prevents wastewater exposure to the atmosphere.



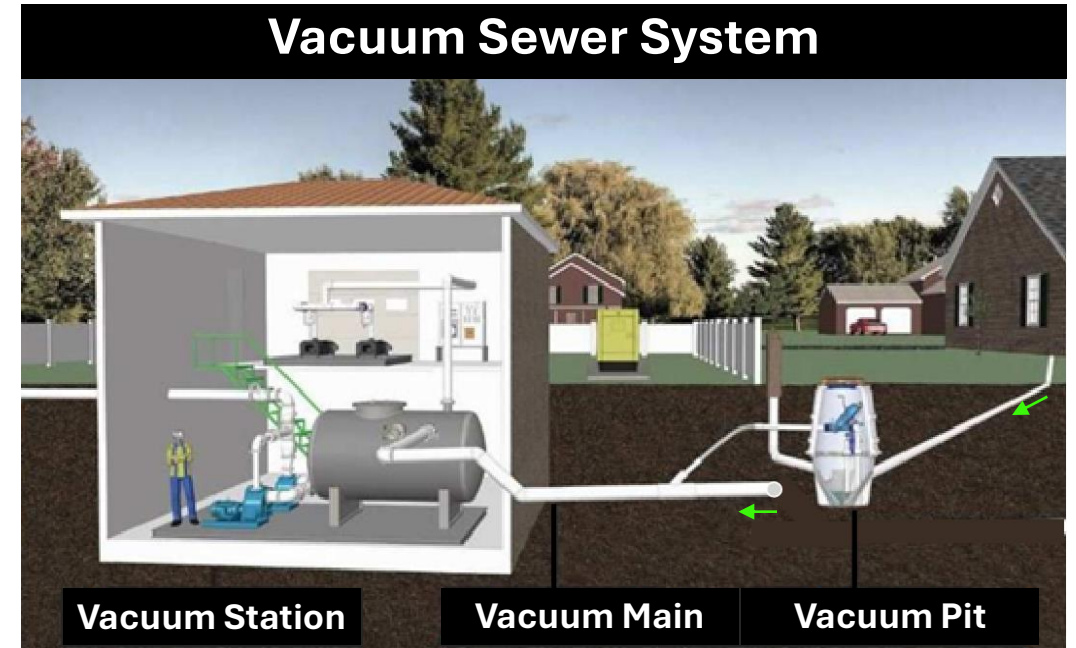
A vacuum collection system has three basic components:

1. Vacuum Valve Pits
2. Vacuum Pipes
3. Vacuum Pump Station

What Happens When I Convert to a Vacuum Sewer



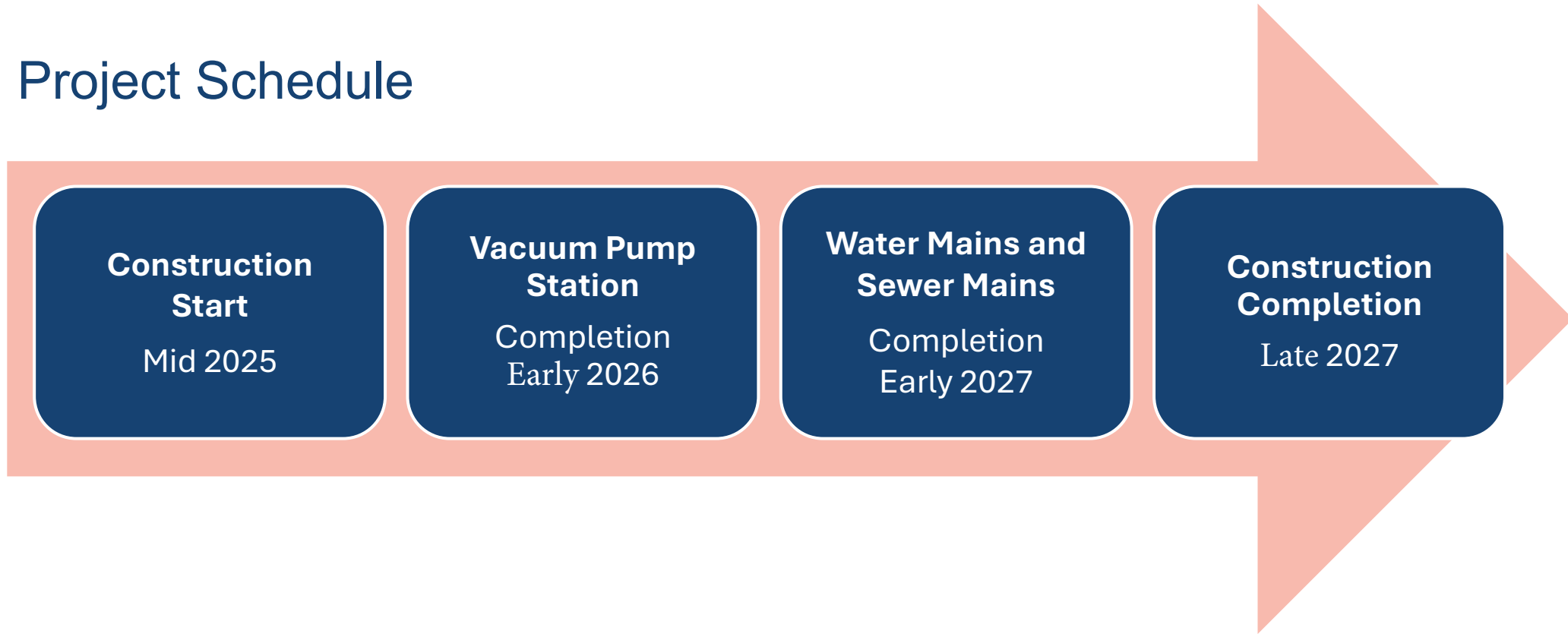
Wastewater flows from the house through the septic tank and drain field into the soil, groundwater, and surface water.



Wastewater flows from the house into a valve pit located in the public right of way. When full, the valve pit opens and wastewater is removed by vacuum to a vacuum pump station that pumps it to a County treatment facility.

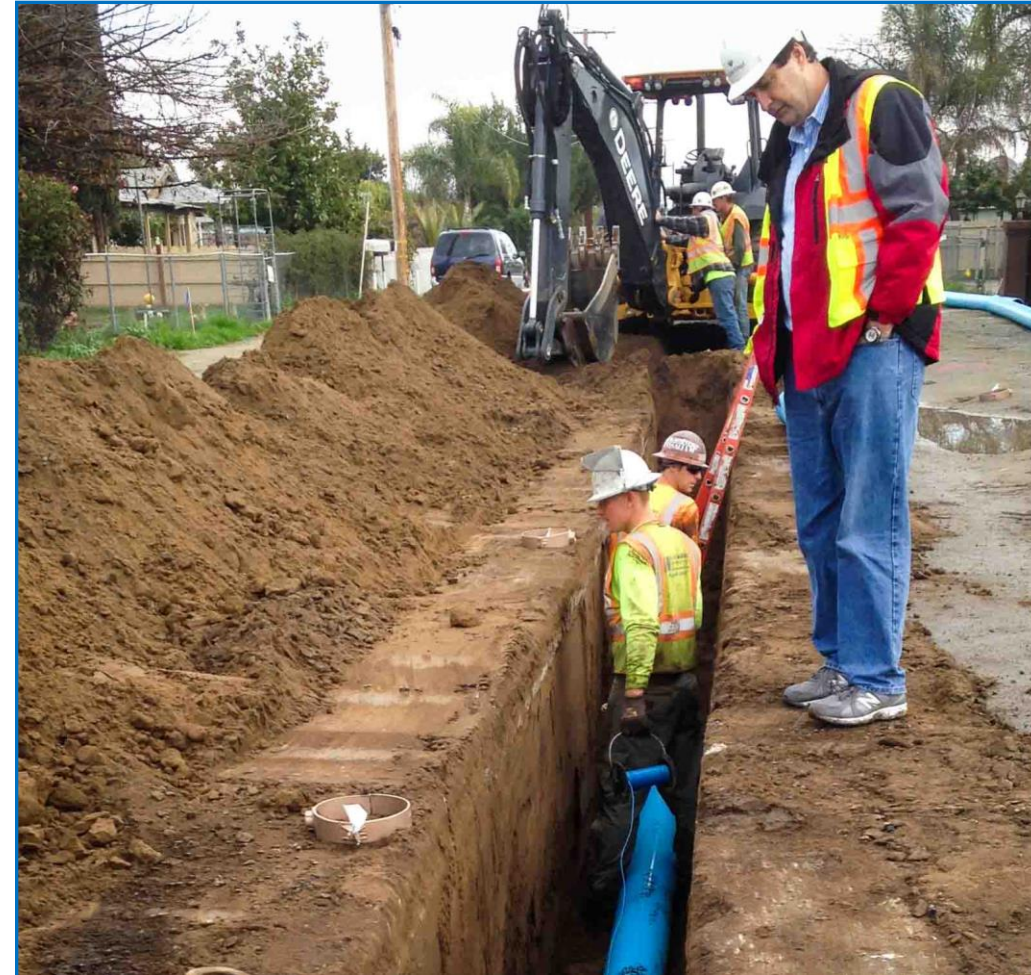
When will Construction Begin and End

Project Schedule



How Will the Project Be Constructed

- Activities will primarily take place on county right-of-way. Any work on private property will require approval by the property owner.
- Property access will be maintained during construction activities.
- No interruptions to solid waste collection, mail, or other delivery services are anticipated.
- Property owners, businesses, and residents will be notified of upcoming construction activities.
- Any desired private landscape/hardscape in the county right-of-way should be removed.
- Mailboxes will be relocated to private property.



Vacuum Main Installation at Rocky Creek

What to Expect During Construction

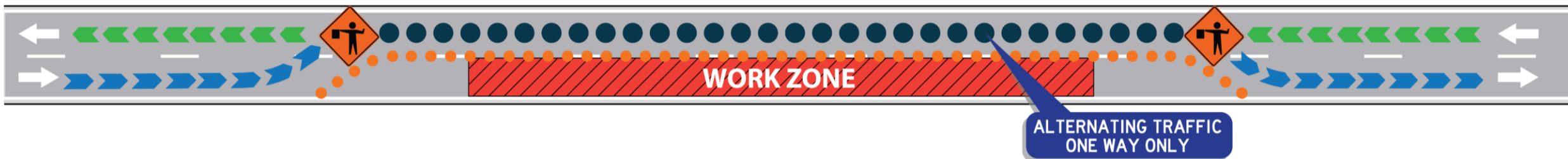
- Construction will typically take place on weekdays, from 7 a.m. to 5:30 p.m.
- The work will involve heavy equipment and excavation, generating normal construction noise vibrations.
- If a water service line break occurs, instructions for a precautionary boil water notice will be issued.
- Construction will employ standard dust and control measures.
- Roads and driveways will be restored to their original pre-construction condition.



What to Expect During Construction

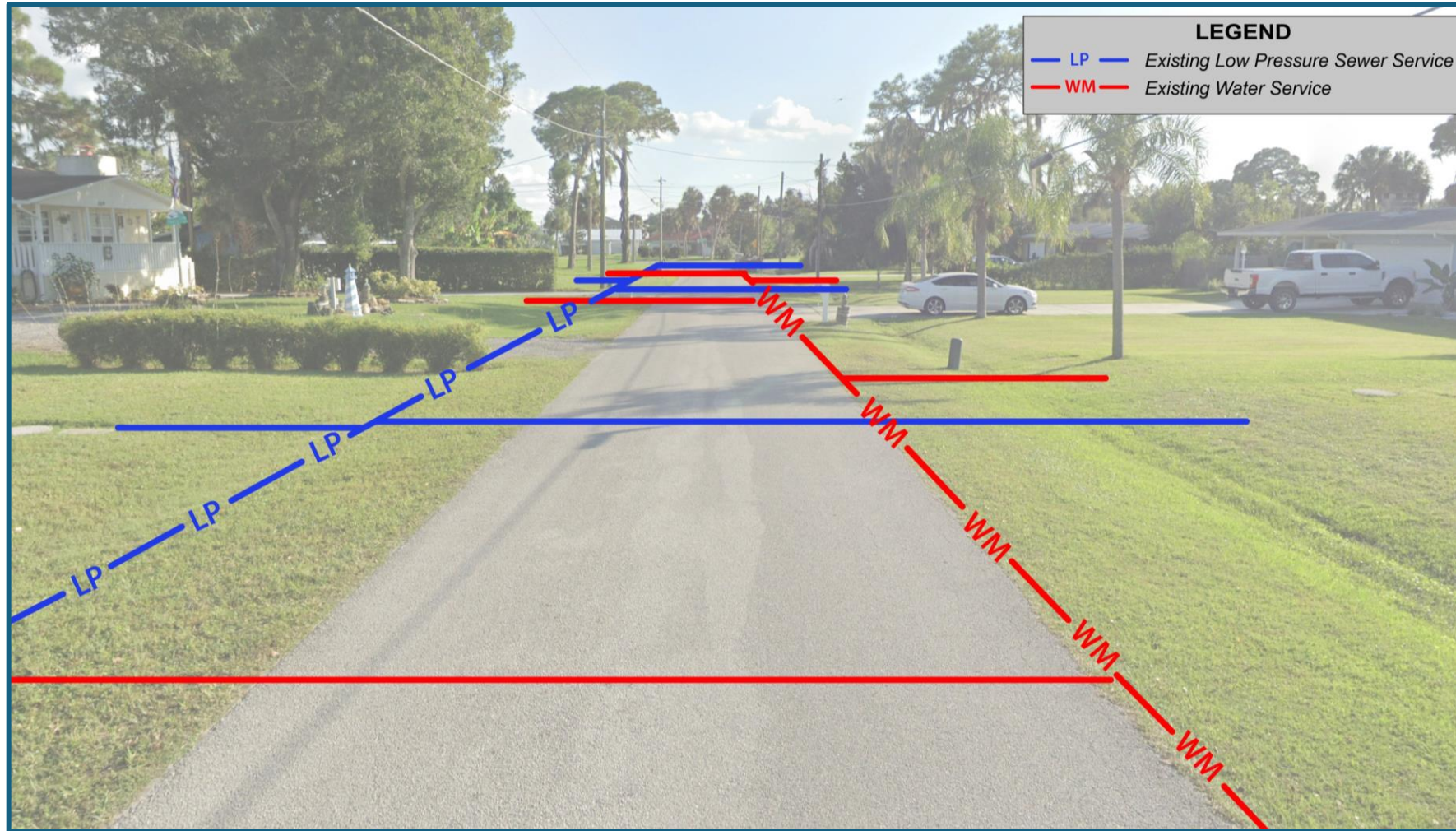
Maintenance of Traffic

- Work will primarily take place in the roadway and open areas.
- Intermittent lane closures and flagging operations will be in effect, as needed, to accommodate construction activities and manage traffic.



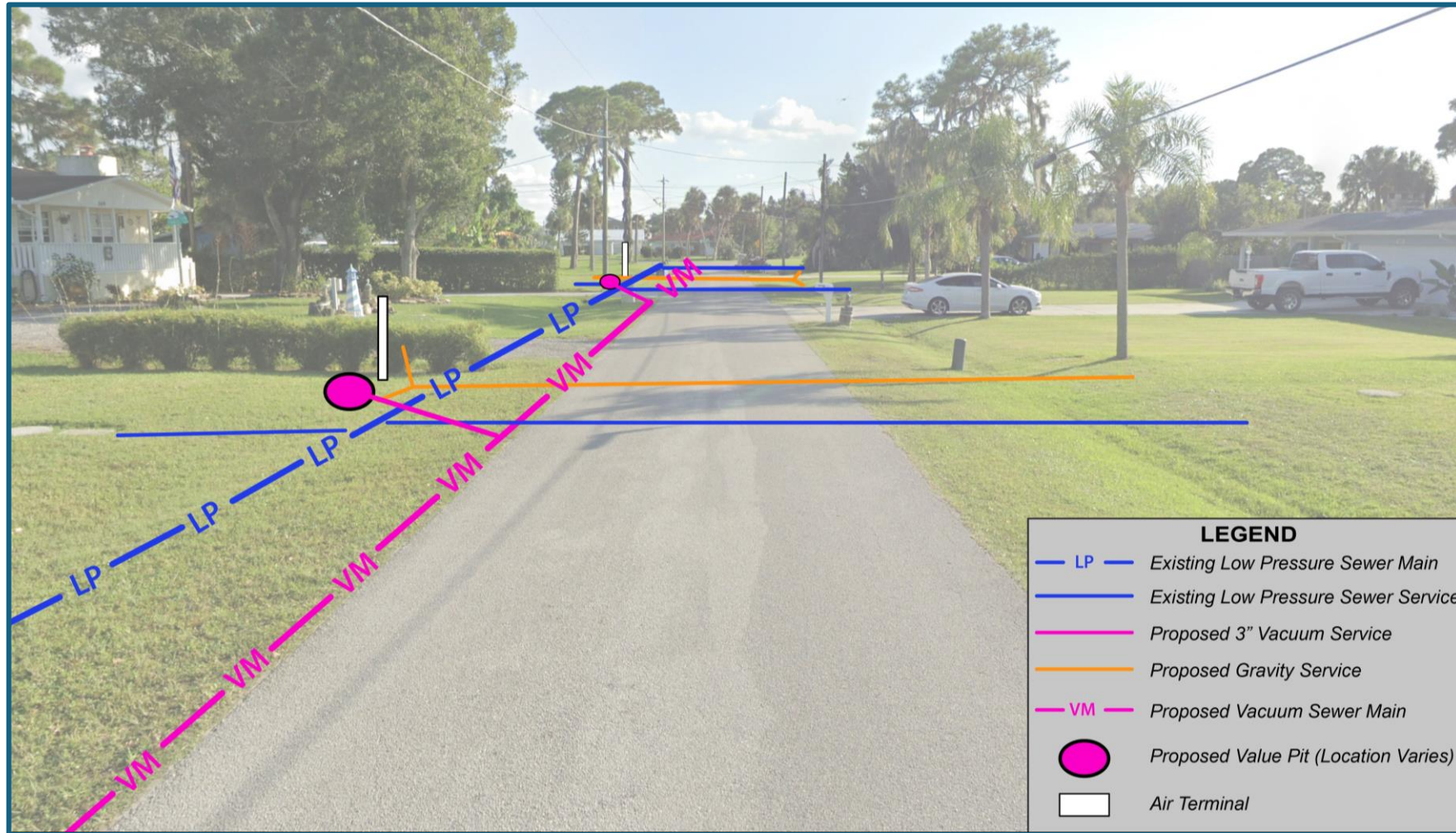
Sequence of Construction

Existing Water and Sewer Mains



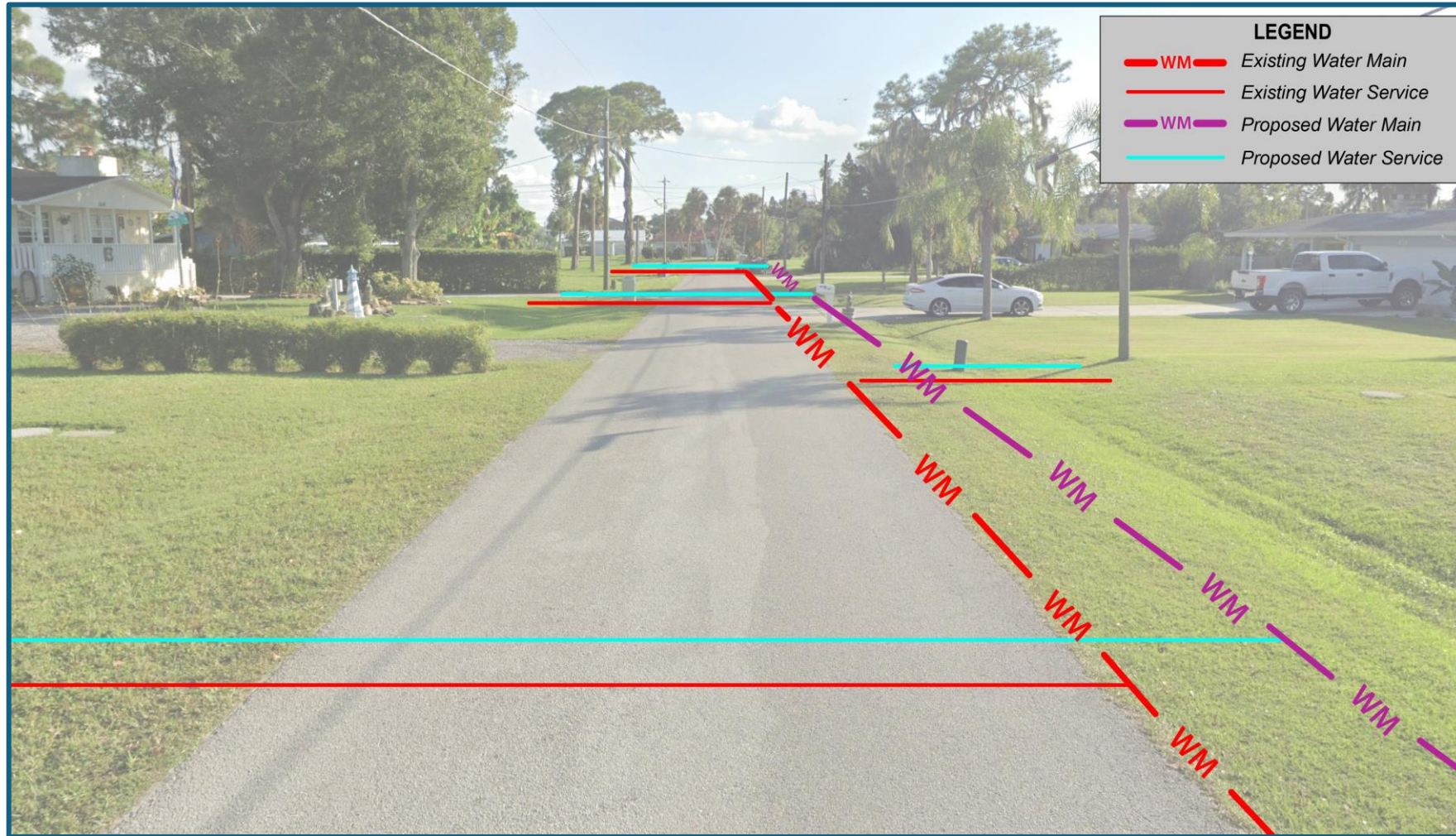
Sequence of Construction

Install Vacuum Sewer Lines



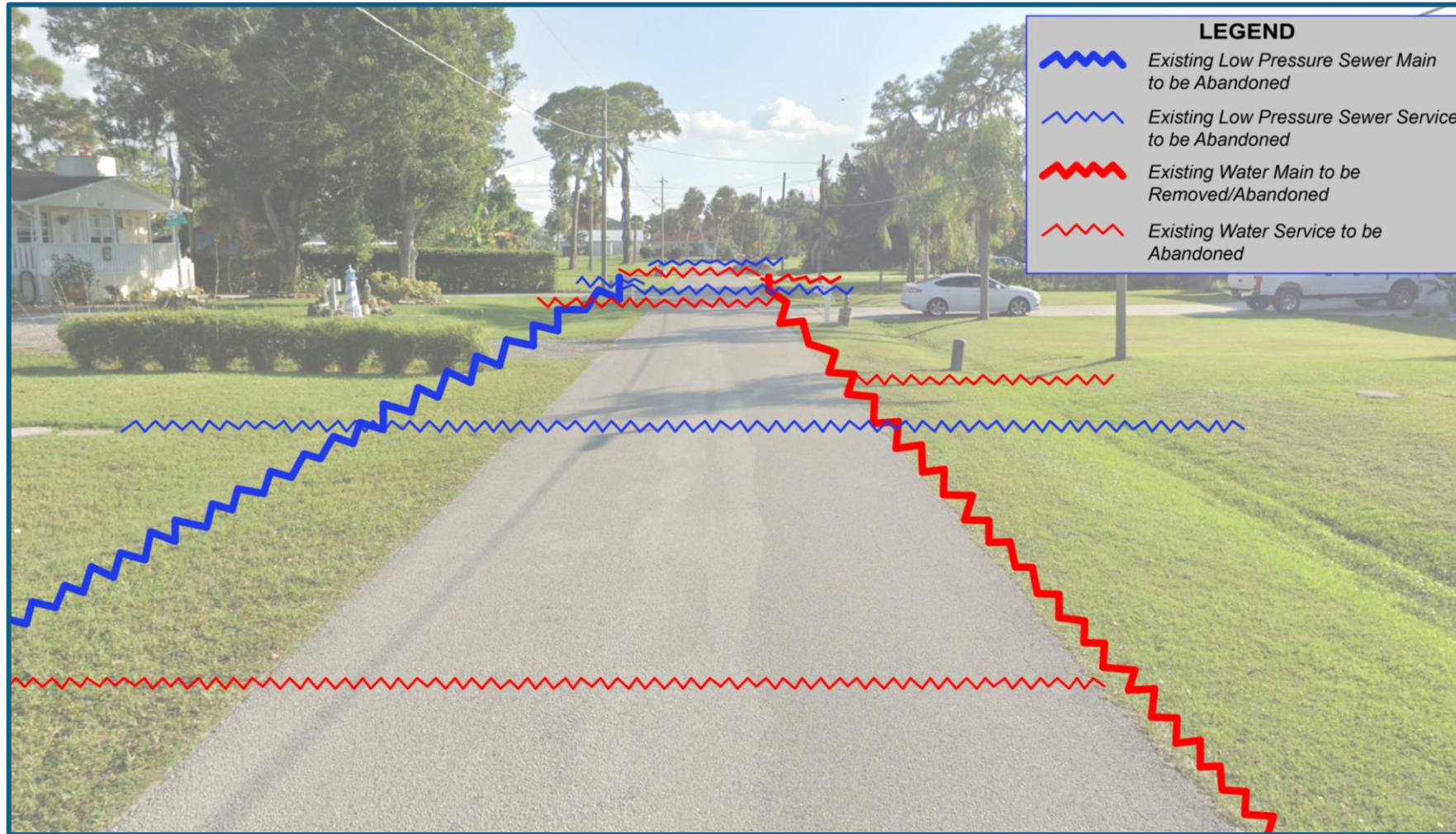
Sequence of Construction

Install New Water Main



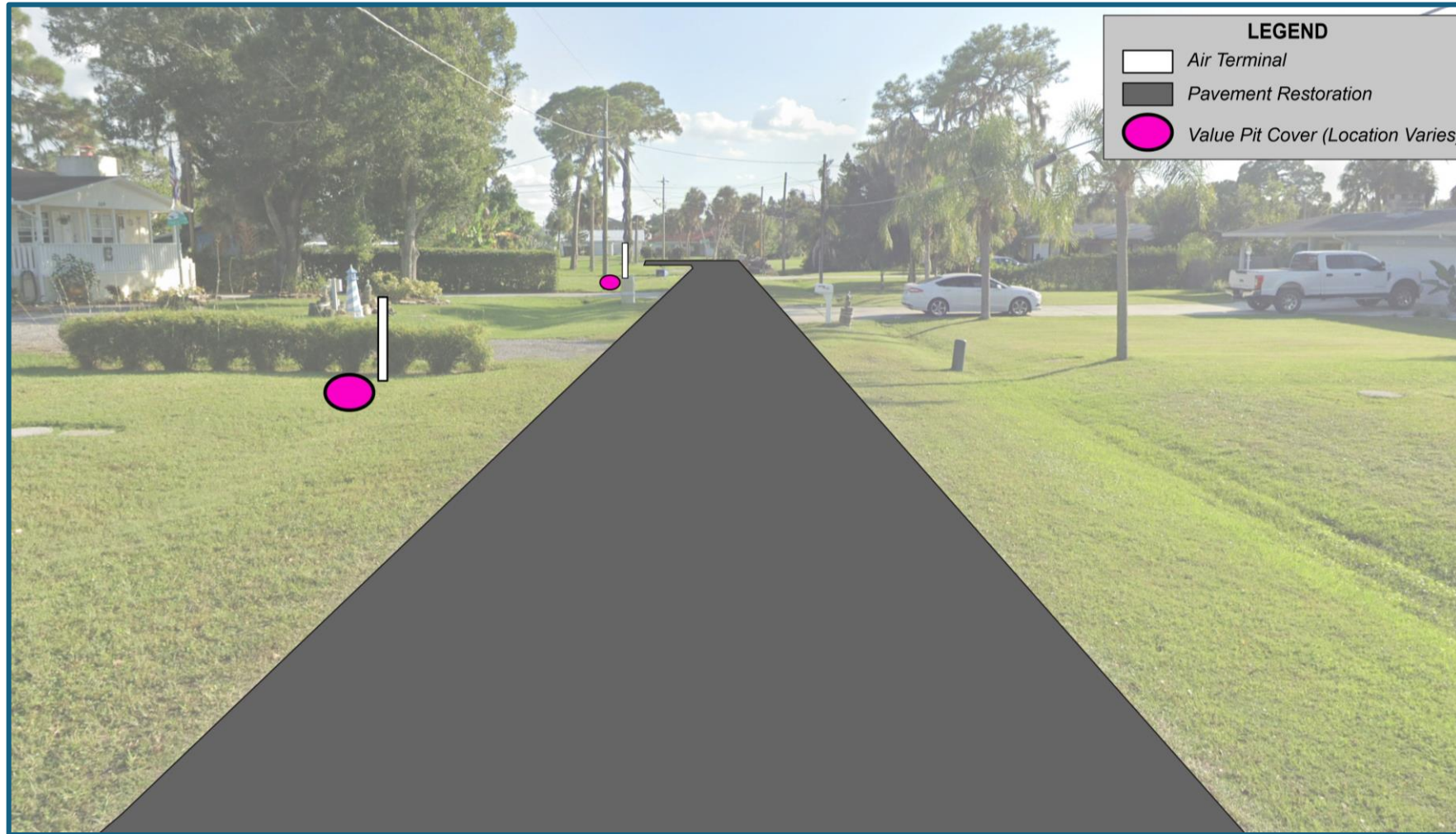
Sequence of Construction

Abandonment/Removal of Mains



Sequence of Construction

Complete Vacuum Valve System and Site Restoration



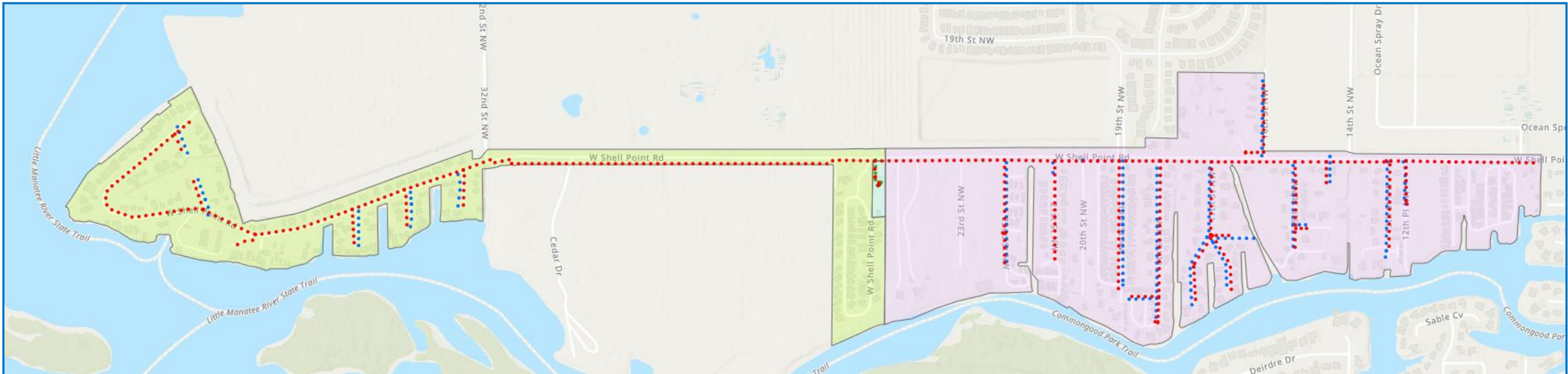
Asbestos Concrete Pipe Removal and Disposal

- Removal will comply with EPA hazardous material regulations.
- Engineered environmental control methods are used to prevent the release of asbestos into the air.
- Areas with hazardous material will be marked and only authorized personnel will be permitted access.
- There is no risk of asbestos exposure to area residents.
- Workers removing the asbestos pipes have undergone extensive training on removal procedures and wear protective equipment.
- Asbestos pipe will be removed and transported to hazardous material disposal sites in accordance with environmental regulations.
- New residential water service connections will be made prior to the removal of the old asbestos concrete pipes.



Project Pipe Installation Progress Map

- Website address – RuskinS2S.com
- Can look up addresses for future sewer connections
- Can see project status by pipeline type, location, and phase
- Interactive GIS map updated as design and construction progress



Online Interactive GIS Map

Project Information and Contacts

- 24/7 Project Phone Number:
(813) 328-1555
- Email:
projectinfo@RuskinS2S.com
- More information available on
Project Website:
RuskinS2S.com

