

R 17 E

R 18 E

R 19 E

R 20 E

R 21 E

R 22 E

T 27 S

T 28 S

T 29 S

T 30 S

T 31 S

T 32 S

T 27 S

T 28 S

T 29 S

T 30 S

T 31 S

T 32 S

UNINCORPORATED HILLSBOROUGH COUNTY ZONING DISTRICTS

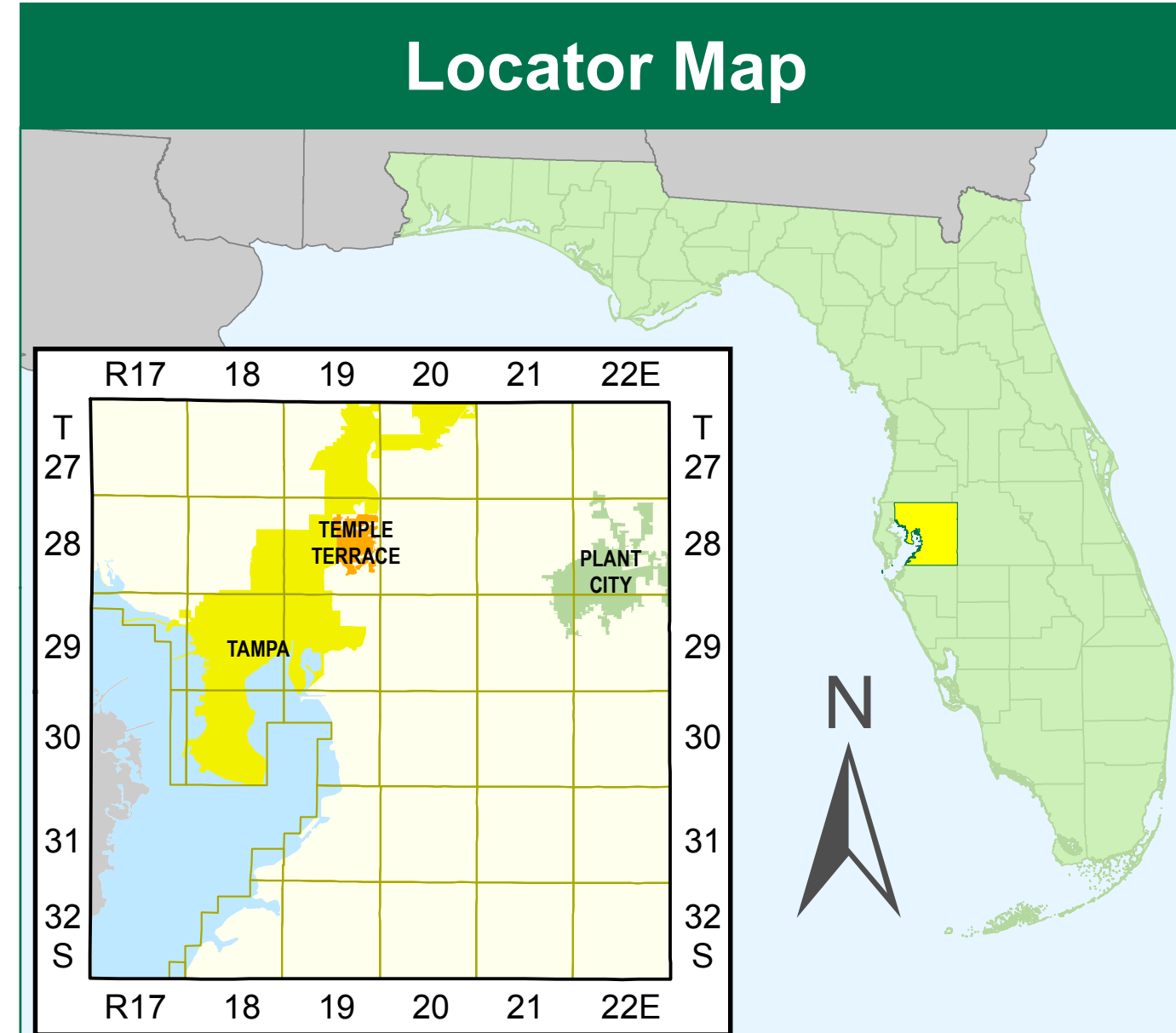
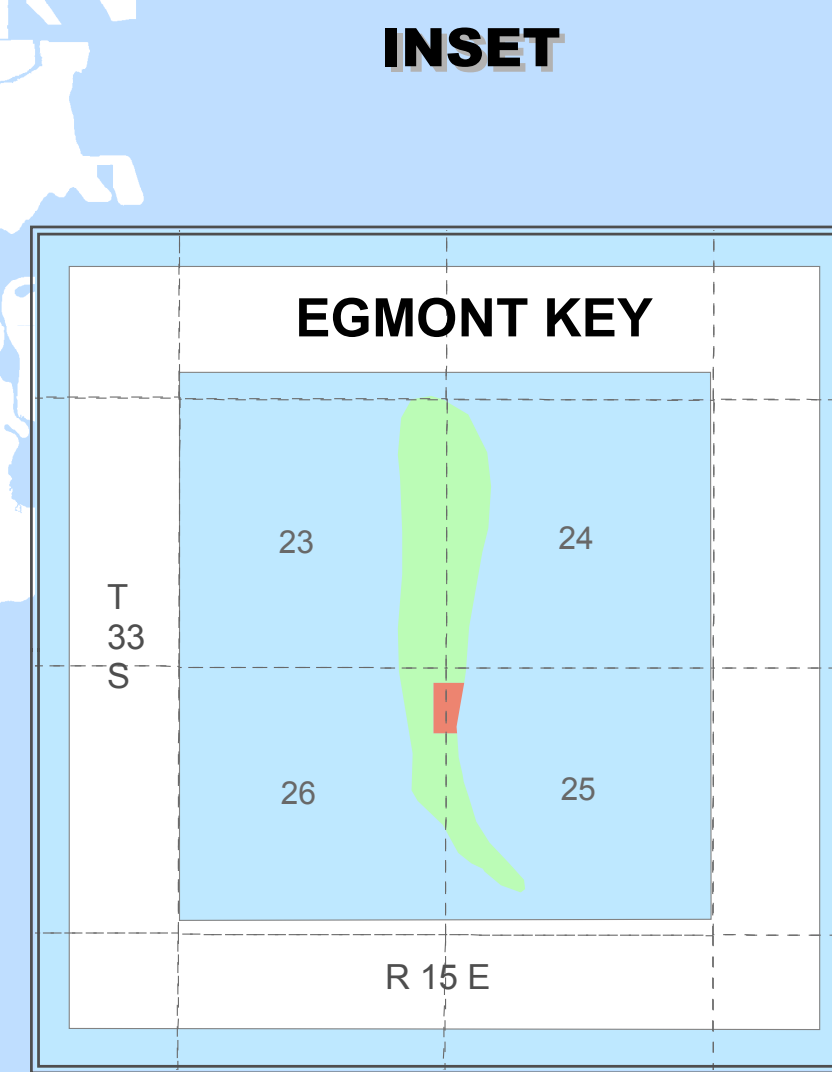
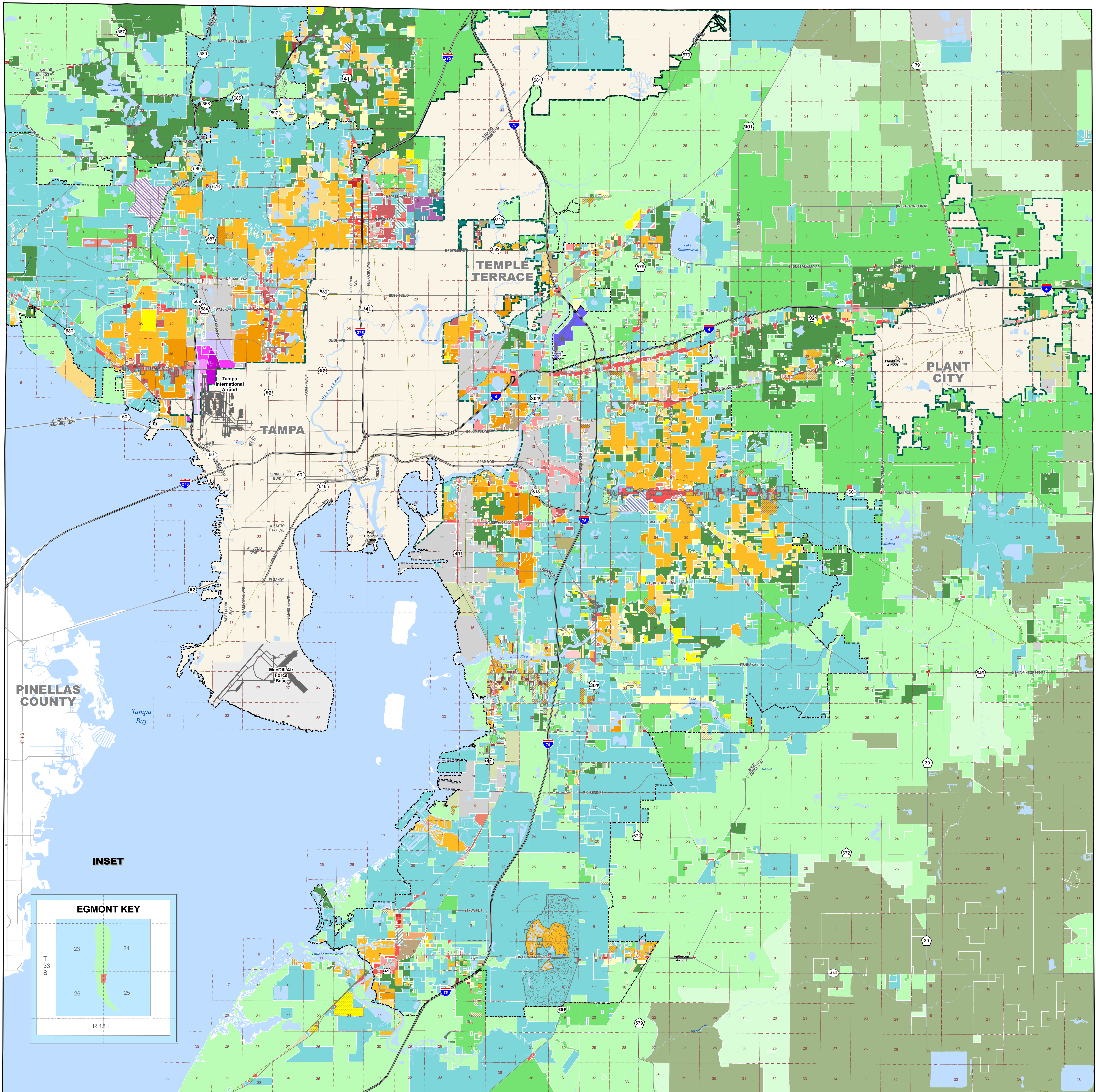
Infrastructure & Development Services



Hillsborough County, Florida

Legend

Zoning Districts		Zoning Districts	
A Agricultural	TND Traditional Neighborhood Development	SPI-HC Historic and Cultural Conservation	
AR Agricultural, Rural	SPI-AP-1 Airport	SPI-AP-2 Airport	
AS-0.4 Agricultural, Single-Family Estate - 1 RU/2.5 Ac	SPI-AP-3 Airport	SPI-AP-4 Airport	
AS-1 Agricultural, Single-Family - 1 RU/Ac	SPI-AP-5 Airport	SPI-AP-V Airport	
ASC-1 Agricultural, Single-Family Convent'l - 1 RU/Ac	SPI-UC-1 University Community	SPI-UC-2 University Community	
AI Agricultural, Industrial	SPI-UC-3 University Community		
AM Agricultural, Mining			
OR Office Residential			
BPO Business, Professional Office			
CN Commercial, Neighborhood			
CG Commercial, General			
CI Commercial, Intensive			
M Manufacturing			
Community-Based Plans		Residential	
BMS Brandon Main Street - 7 Districts	RSC-2 Single-Family Convent'l - 2 U/Ac	RSC-3 Single-Family Convent'l - 3 U/Ac	
CPV Citrus Park Village - 43 Districts	RSC-4 Single-Family Convent'l - 4 U/Ac	RSC-6 Single-Family Convent'l - 6 U/Ac	
LDC Lutz Downtown Center	RSC-9 Single-Family Convent'l - 9 U/Ac	RDC-6 Duplex Convent'l - 6 U/Ac	
RDD Riverview Downtown District - 6 Districts	RDC-12 Duplex Convent'l - 12 U/Ac	RMC-6 Multi-Family Convent'l - 6 U/Ac	
RTC Ruskin Town Center - 2 Districts	RMC-9 Multi-Family Convent'l - 9 U/Ac	RMC-12 Multi-Family Convent'l - 12 U/Ac	
UCA University Community Area - 4 Districts	RMC-16 Multi-Family Convent'l - 16 U/Ac	RMC-20 Multi-Family Convent'l - 20 U/Ac	
Planned Development		Municipalities	
PD Planned Development	Plant City; Tampa; Temple Terrace	Urban Service Area Boundary	
IPD-1 Interstate Planned Development			
IPD-2 Interstate Planned Development			
IPD-3 Interstate Planned Development			
Zoning Overlay Districts		Seminole Indian Nation	
Location-based Overlays		Not part of County Zoning	
MH or SB		Note: Some Zoning Districts have additional Restrictions placed on them. Though not shown on this map, through other media they would be indicated with (R) following the Zoning Code. For detailed zoning and development restrictions see our Land Development Code on line at: http://www.municode.com/resources/gateway.asp?pid=12395&sid=9	



NOTE: Every reasonable effort has been made to assure the accuracy of this map. Hillsborough County does not assume any liability arising from use of this map. THIS MAP IS PROVIDED WITHOUT WARRANTY OF ANY KIND, either expressed or implied, including, but not limited to, the implied warranties of merchantability and fitness for a particular purpose.

SOURCE: This map has been prepared for the inventory of real property found within Hillsborough County and is compiled from recorded deeds, plats, and other public records; it has been based on BEST AVAILABLE data.

Users of this map are hereby notified that the aforementioned public primary information sources should be consulted for verification of the information contained on this map.

601 E Kennedy Blvd
Tampa, FL 33602
(813) 272-5810
printroom@hillsboroughcounty.org

