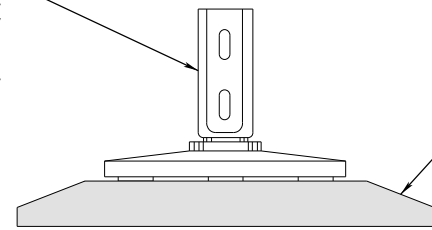
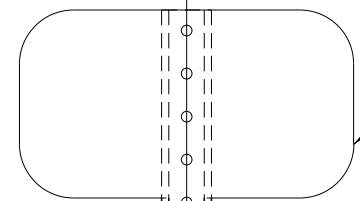


SNAP'N SAFE U CHANNEL
SIGNPOST SURFACE MOUNT
COUPLER OR EQUAL



CONCRETE SEPARATOR

BREAKAWAY U-CHANNEL POSTS INSTALLED ON CONCRETE



SIGN PANEL

7'-0"

6" MIN - 10" MAX

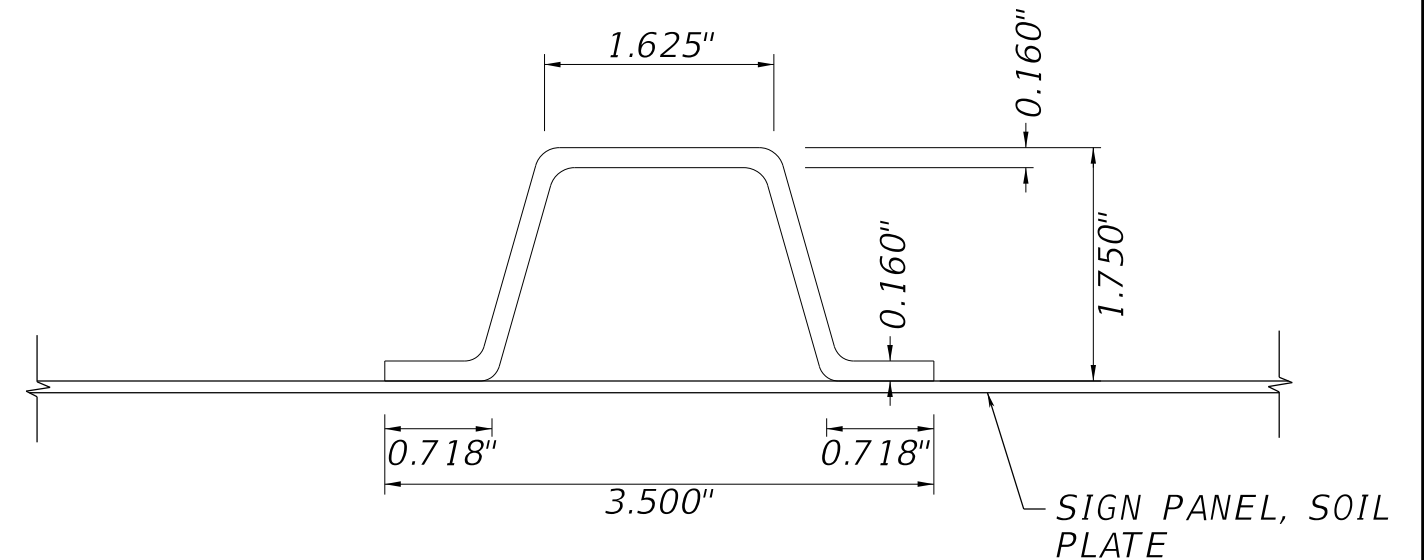
TRAPEZOIDAL
SOIL PLATE

SEE NOTE 2

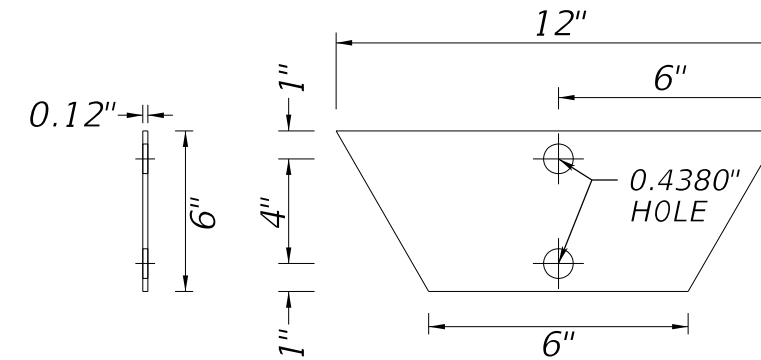
36"

DIRECT BURIAL U-CHANNEL POSTS

WEIGHT: 3 LBS/FT



POST SECTION PROPERTIES
(TOP VIEW)



TRAPEZOIDAL SOIL PLATE

NOTES:

1. USE BREAKAWAY DEVICES WHEN SIGNS ARE INSTALLED ON CONCRETE MEDIANS. CORE DRILLING IS NOT ALLOWED ON CONCRETE MEDIUM.
2. U-CHANNEL POST MUST BE INSTALLED IN PREFORMED HOLES WITH BACKFILL IN STRONG OR WEAK SOIL. POSTS MUST NOT BE MOUNTED IN CONCRETE.
3. TRAPEZOIDAL SOIL PLATE SHALL BE GALVANIZED OR ALUMINUM.
4. TRAPEZOIDAL SOIL PLATE SHALL BE INSTALLED ON THE WIDER SIZE OF THE POST SECTION AS SHOWN IN THE POST SECTION PROPERTIES DETAIL.
5. ALL HARDWARE 0.5 INCHES (0.5") AND SMALLER MUST BE TYPE 304 OR 316 PASSIVATED STAINLESS STEEL. HARDWARE LARGER THAN 0.5 INCHES SHALL BE GALVANIZED.

LAST REVISION	DESCRIPTION
07/18/25	



Hillsborough County Florida Standard Details

POST MOUNTED SIGNS DETAILS

INDEX
PMS-001

SHEET
1 of 1