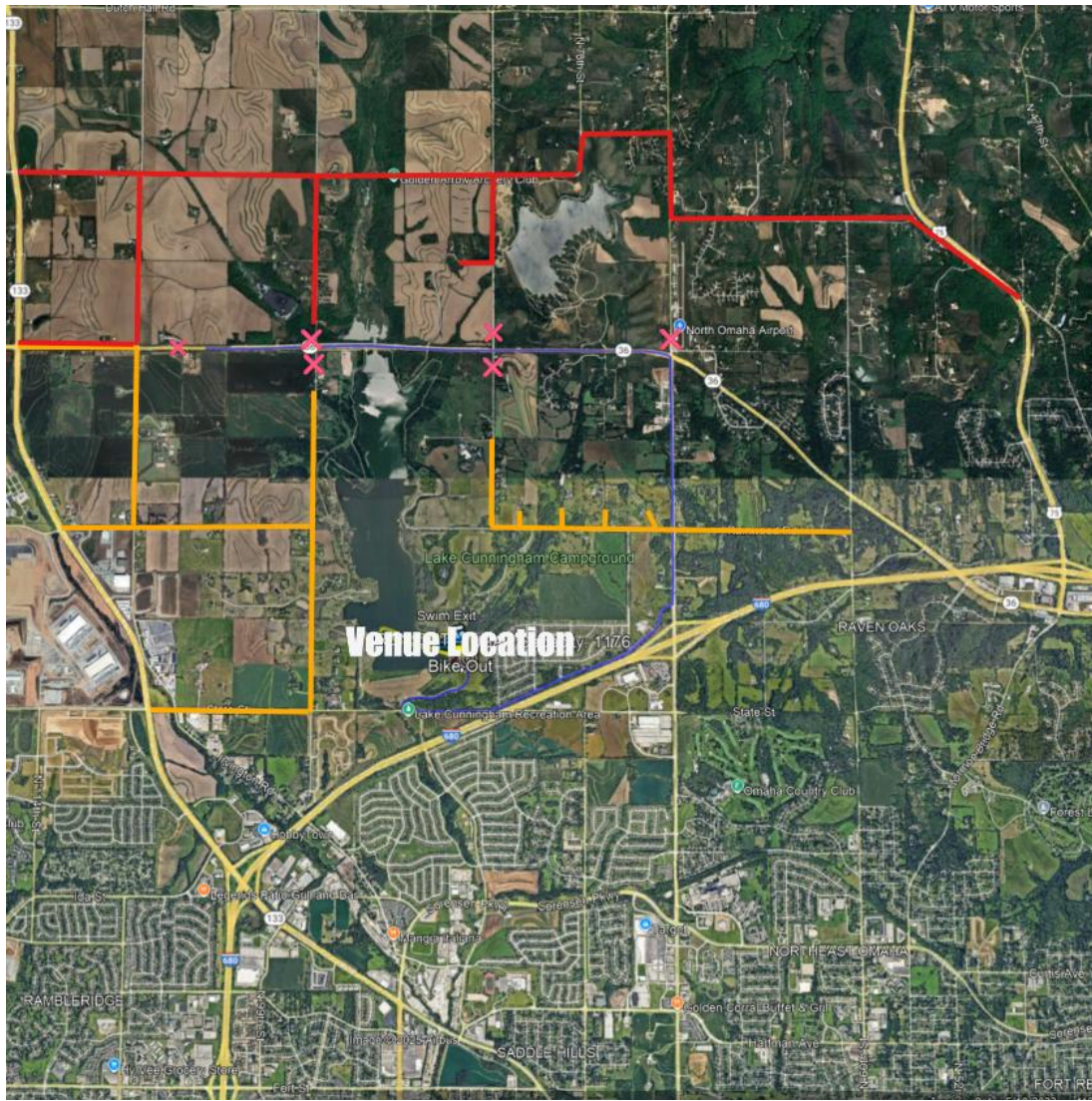


# Highway 36 Residents Access Due to National Championship Triathlon Event

Thursday, June 5: 8:00am-2:00pm

Friday, June 6: 8:00am-2:00pm



## For residents who live north of HWY 36

### *Red exit route lines*

Travel north out of your home to either Pawnee Rd or Dutch Hall Rd- then proceed east or west. If traveling east, head to 60<sup>th</sup> St before turning south.

## For residents who live south of HWY 36

### *Orange exit route lines*

Travel south to Rainwood Rd, then cross 72<sup>nd</sup> St. A Law Enforcement Officer will meter you across 72<sup>nd</sup> St to then proceed east to 60<sup>th</sup> St to your desired destination.

## For residents who live south of HWY 36 / west of Lake Cunningham

### *Orange exit route lines*

Proceed south on your respective roadway then west to HWY 133.

**X - No Access to Roadway**

**Blue line indicates race course**



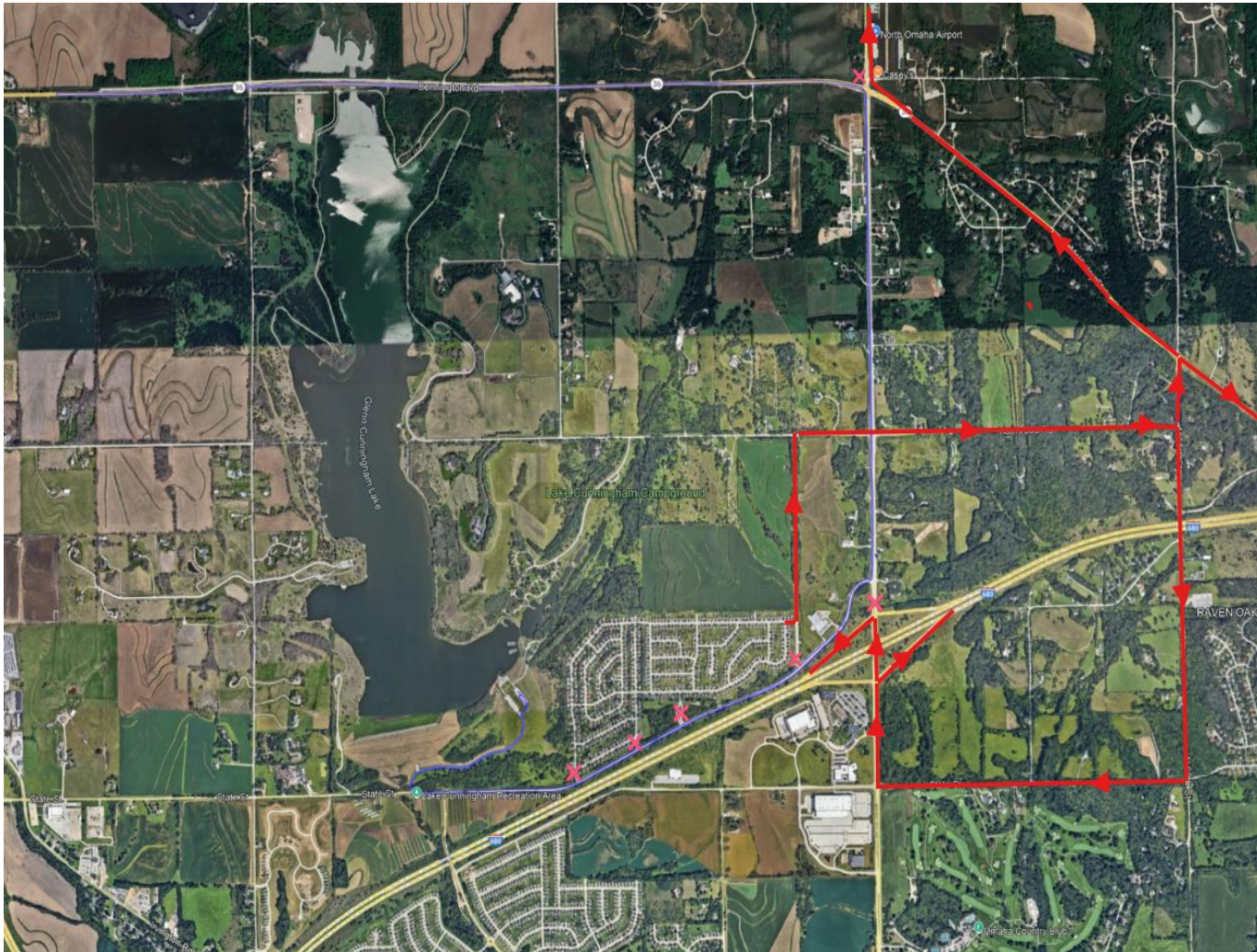
PRESENTED BY  
**Mutual of Omaha**



## Residents who live along Lake Cunningham Drive

Thursday, June 5: 8:00am-2:00pm

Friday, June 6: 8:00am-2:00pm



### **For residents who live along Lake Cunningham Drive**

*Red lines are exit route lines*

Exit out of neighborhood on 75<sup>th</sup> St then head north on 75<sup>th</sup> St. Turn right on Rainwood Rd then proceed east to 72<sup>nd</sup> St. Law Enforcement will meter traffic east across 72<sup>nd</sup> to routes to your destination

**X - No Access to Roadway**

**Blue line indicates race course**



PRESENTED BY  
**Mutual of Omaha**



**Residents in Somerset, Turnbridge, Lake Cunningham Estates, Lake Cunningham Hills and Lake Cunningham Ridge  
Access Due to National Championship Triathlon Event**

Thursday, June 5 1:50pm-7:00pm

Friday, June 6 8:00am-2:00pm

Sunday, June 8 6:00am-1:15pm



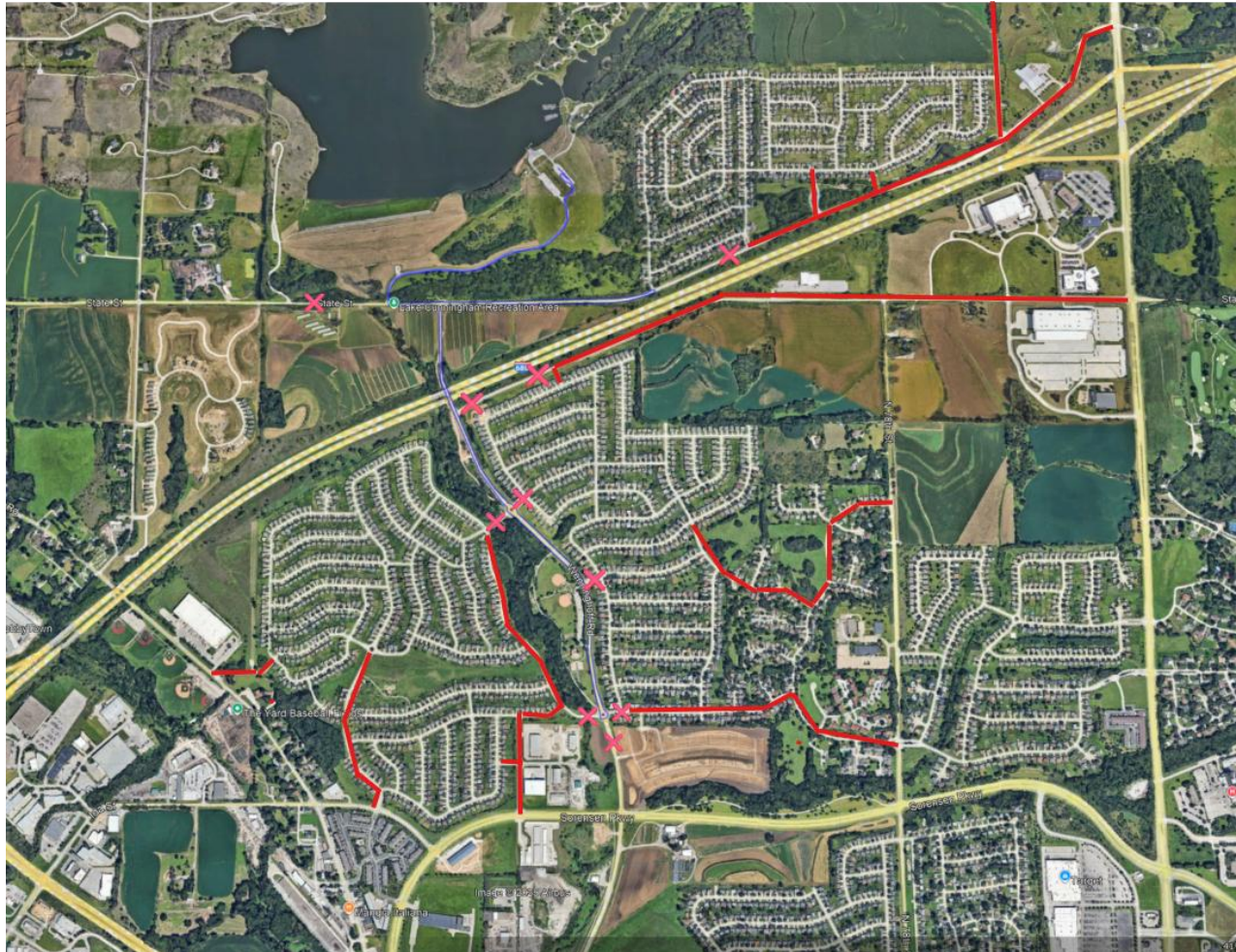
**Red route lines indicate  
exit out of neighborhood  
during the dates and times  
listed above**

**X - No Access to Roadway  
Blue line indicates race course**





**Residents in Somerset, Turnbridge, Lake Cunningham Estates, Lake Cunningham Hills and Lake Cunningham Ridge  
Access Due to National Championship Triathlon Event  
Saturday, June 7 6:00am-4:00pm**



**Red route lines indicate  
exit out of neighborhood  
during the dates and times  
listed above**

**X - No Access to Roadway  
Blue line indicates race course**

