

Parking and Shuttle Information

Please allow extra time race morning(s) to proceed to venue. Parking on-site at Lake Cunningham is not permitted unless you have pre-purchased a parking pass, reserved a camp site, or reserved a Phat Trailer.

There is no entry/exit into Lake Cunningham Park via State St./Lake Cunningham Road.

There are two (2) parking options for the 2025 USA Triathlon Multisport National Championships Festival Presented by Mutual of Omaha. It is required that those who plan to drive to the event secure one of the following parking options. **Unless an individual has secured a camp site at Lake Cunningham via their own means of camping or a Phat Trailer reservation. **If you wish to make a camping reservation, follow the link [HERE](#).***

All parking options will be valid for the entirety of the event, June 4-8, 2025, with unlimited entry/re-entry. Each parking option is valid for the number of individuals that can safely fit in the car. A “car” is classified as any motorized vehicle that can fit in one standard parking spot. Oversized vehicles must utilize the off-site location at Northwest High School. **To purchase your parking pass, follow the link [HERE](#).**

OPTION 1

PARKING AT LAKE CUNNINGHAM (ON-SITE): This will be the **ONLY** option to park on-site (outside of those that are camping via their own camper or utilizing the Phat Trailers). There are limited on-site parking spots and these will be sold on a first come, first served basis. These will sell out. Parking on-site will be located in the East C campground and individuals will be directed on where to park upon entry into the park. This option is \$55.00 for the entirety of the event (June 4-8, 2025) with unlimited entry and re-entry. Upon purchase, you will receive a confirmation email. You will be mailed your physical parking pass ahead of time. Passes will be mailed in early May. All that purchase this option will be required to enter the park via Rainwood Road and turning left onto Glenn Cunningham Lake Park Road. There will be staff checking passes upon making this turn.

If you require ADA parking, you will be permitted to park on-site at Lake Cunningham in lot West. You must show a Persons with Disabilities placard upon entry.



PRESENTED BY
Mutual of Omaha



OPTION 2

PARKING AT NORTHWEST HIGH SCHOOL: This option will be located at Northwest High School parking lot directly east of provided address (6026 Wenninghoff Rd, Omaha, NE 68134) about 5 miles from the event venue. This option is \$20.00 for the entirety of the event (June 4-8, 2025) with unlimited entry and re-entry. **It must be purchased in advance.** Once parked, individuals will be shuttled to Lake Cunningham. Shuttles will run every 30 minutes to and from the venue. The drop off and pick up location at Lake Cunningham will be West C. **To purchase your parking pass, follow the link [HERE](#).**

Bike Drop-Off: THIS MUST BE DONE ONE DAY PRIOR TO YOUR FIRST RACE AT BIKE VALET. Once you have dropped your bike, you will then park at Northwest High School. Your confirmation email will be your pass to enter the off-site parking lot.

No bikes are permitted on the shuttle buses!

**Omaha Sports Commission has a no refund policy.*

Shuttles will run approximately every 30 minutes between the below hours

- **Wednesday, June 4:** 11:00am – 6:30pm (last pickup at venue)
 - **Thursday, June 5:** 6:30am – 8:30pm
 - **Friday, June 6:** 6:30am – 6:45pm
 - **Saturday, June 7:** 4:40am – 7:00pm
 - **Sunday, June 8:** 5:00am – 2:30pm
-



PRESENTED BY
 Mutual of Omaha

RIDESHARE

If choosing to do a Rideshare to the venue (Uber, Lyft, etc.), drivers must enter via Rainwood Rd., and then turn onto Glenn Cunningham Lake Park Road. Drop off will take place at East C.

PARKING FROM SUNDAY, JUNE 1 – TUESDAY, JUNE 3

If traveling to the venue on these dates, all must park in the East C lot (enter via Rainwood Rd. and then turning onto Glenn Cunningham Lake Park Road). There is absolutely no parking on the grass.

VOLUNTEER PARKING (COMPLIMENTARY)

**must show volunteer confirmation for proof to receive free parking*

- **Tuesday, June 3 - Sunday, June 8:** Parking lot on southwest end of Lake Cunningham. Please enter from 96th and State Streets and proceed to east on State Street and enter park at Entrance #2.

ON-SITE PARKING

MUST HAVE
PRE-PURCHASED

Ride Share

Bike Valet
drop off



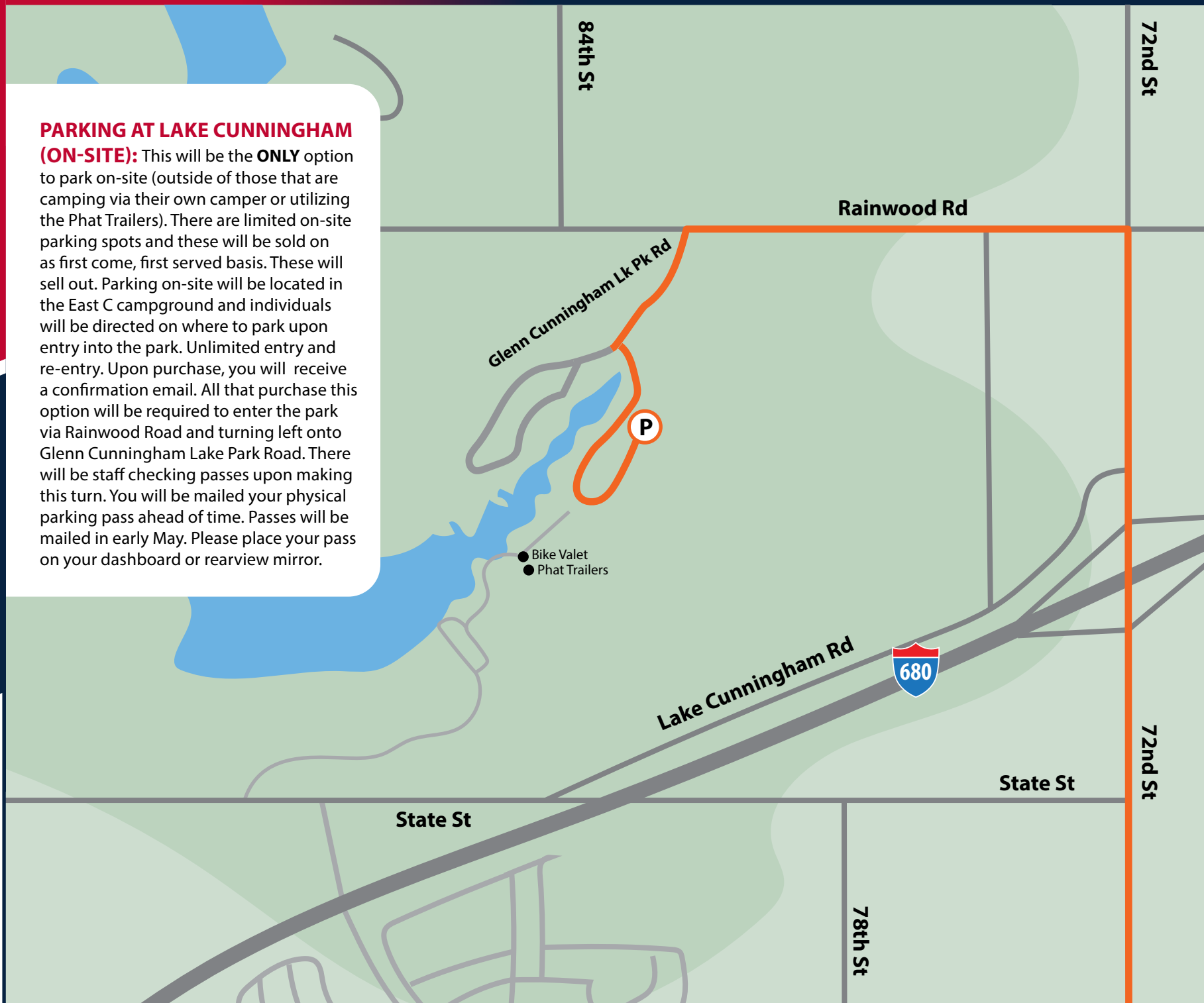
PRESENTED BY
Mutual of Omaha

KEY

-  PERMIT PARKING ROUTE
-  PERMIT PARKING

PARKING AT LAKE CUNNINGHAM

(ON-SITE): This will be the **ONLY** option to park on-site (outside of those that are camping via their own camper or utilizing the Phat Trailers). There are limited on-site parking spots and these will be sold on a first come, first served basis. These will sell out. Parking on-site will be located in the East C campground and individuals will be directed on where to park upon entry into the park. Unlimited entry and re-entry. Upon purchase, you will receive a confirmation email. All that purchase this option will be required to enter the park via Rainwood Road and turning left onto Glenn Cunningham Lake Park Road. There will be staff checking passes upon making this turn. You will be mailed your physical parking pass ahead of time. Passes will be mailed in early May. Please place your pass on your dashboard or rearview mirror.



ON-SITE PARKING VENUE ROUTES



PRESENTED BY
Mutual of Omaha

KEY

-  PERMIT PARKING ROUTE
-  PERMIT PARKING

PARKING AT LAKE CUNNINGHAM

(ON-SITE): This will be the **ONLY** option to park on-site (outside of those that are camping via their own camper or utilizing the Phat Trailers). There are limited on-site parking spots and these will be sold on a first come, first served basis. These will sell out. Parking on-site will be located in the East C campground and individuals will be directed on where to park upon entry into the park. Unlimited entry and re-entry. Upon purchase, you will receive a confirmation email. All that purchase this option will be required to enter the park via Rainwood Road and turning left onto Glenn Cunningham Lake Park Road. There will be staff checking passes upon making this turn. You will be mailed your physical parking pass in early May.

Routes to Venue:

June 5, Thursday | 7:00am – 1:15pm

June 6, Friday | 7:00am – 1:30pm

Westbound I-680 from downtown



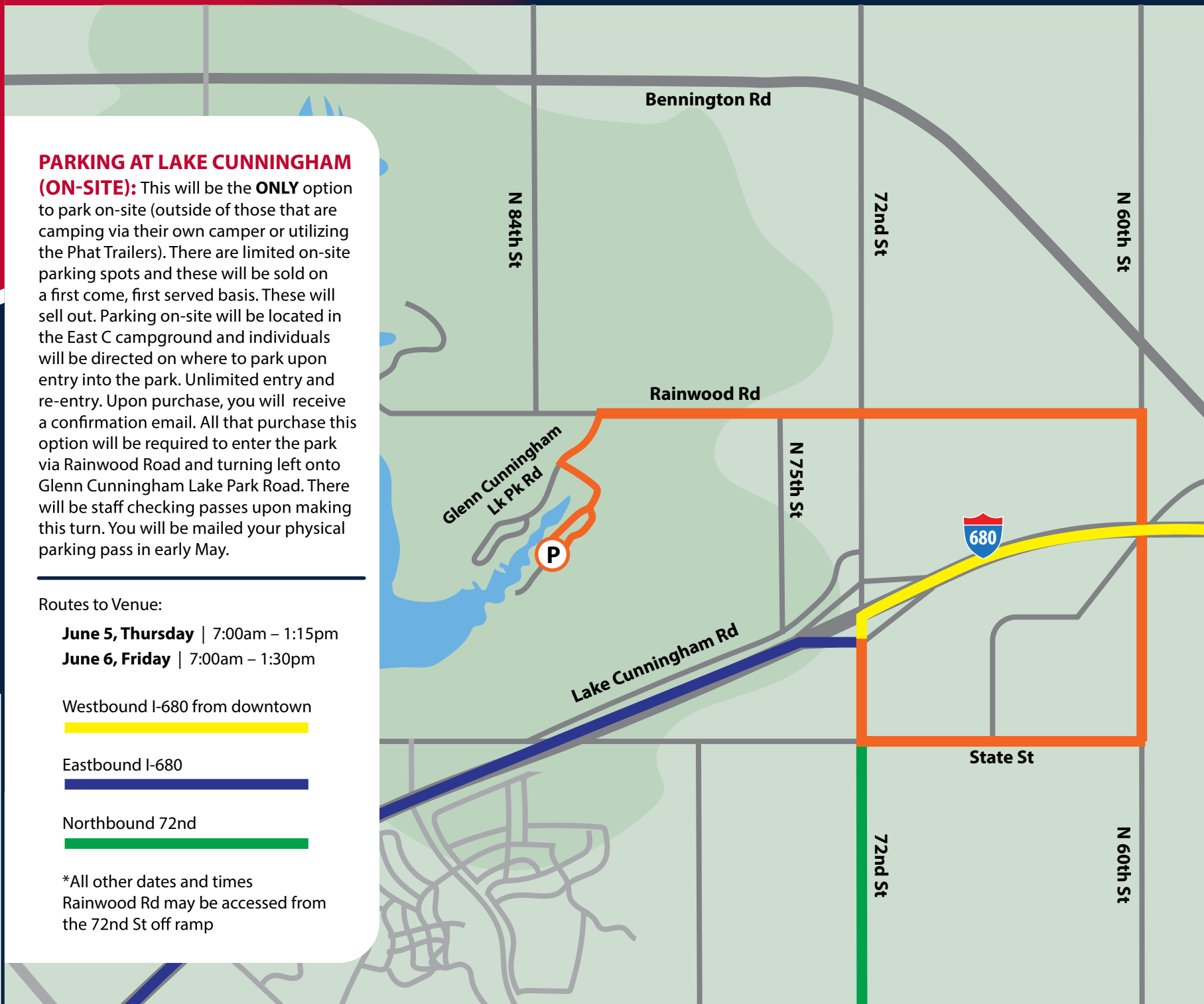
Eastbound I-680



Northbound 72nd



*All other dates and times
Rainwood Rd may be accessed from
the 72nd St off ramp



OFF-SITE SHUTTLE MAP

Northwest High School

6026 Wenninghoff Rd



PRESENTED BY Mutual of Omaha

KEY

- SHUTTLE ROUTE
- SHUTTLE DROP OFF
- BIKE VALET DROP OFF FOR OFF-SITE PARKING

PARKING AT NORTHWEST HIGH SCHOOL:

This option will be located at Northwest High School parking lot, directly across from the address provided (6026 Wenninghoff Rd, Omaha, NE 68134) about 5 miles from the event venue. This option is \$20.00 for the entirety of the event (June 4-8, 2025) with unlimited entry and re-entry. **It must be purchased in advance.** Once parked, individuals will be shuttled to Lake Cunningham. Shuttles will run every 30 minutes to and from the venue. The drop off and pick up location at Lake Cunningham will be West C.

Athletes who park at off-site parking will be asked to drop their bike off at the secure Bike Valet at the venue prior to picking up their packet.

Bike Valet is a complimentary service that USA Triathlon is providing to athletes. Athletes utilizing this service are permitted to park in a designated parking section location in the south portion of the East C Camping Area. Parking attendants will help to direct these individuals to the designated bike drop off parking area. Athletes will have 30-minutes to unload their bike(s) and check their bike(s) in at Bike Valet location in the venue. There will be parking attendants located in this area monitoring and enforcing the 30-minute time frame for bike drop off. There will be 10 spaces available for temporary parking so please be courteous of other athletes. The parking spaces for bike drop off will be available for off-site parking only and will only be offered during packet-pick up times. Please be prompt and plan accordingly.

Athletes who check their bike(s) in to this location will have unlimited, secure access to the Bike Valet area during specific days and hours (no exceptions!). **This is MANDATORY and MUST BE DONE ONE DAY PRIOR TO YOUR FIRST RACE.**

No bikes are permitted on the shuttle buses!

**Omaha Sports Commission has a no refund policy.*

Shuttles will run approximately every 30 minutes between the below hours

- **Wednesday, June 4:** 11:00am – 6:30pm (last pickup at venue)
- **Thursday, June 5:** 6:30am – 8:30pm
- **Friday, June 6:** 6:30am – 6:45pm
- **Saturday, June 7:** 4:40am – 7:00pm
- **Sunday, June 8:** 5:00am – 2:30pm



VOLUNTEER PARKING



KEY

- ROUTE
- VOLUNTEER PARKING



VOLUNTEER PARKING (COMPLIMENTARY)

**must show volunteer confirmation for proof to receive free parking*

Tuesday, June 3 - Sunday, June 8: Parking lot on southwest end of Lake Cunningham. Please enter from 96th and State Streets and proceed east on State Street and enter park at Entrance #2.

OVERVIEW OF:

On-Site Permit
Parking

Ride Share
drop off/pick up

Shuttle
drop off/pick up

Bike Valet
location



PRESENTED BY
Mutual of Omaha

KEY

- SHUTTLE ROUTE
- SHUTTLE/RIDE SHARE DROP OFF
- PERMIT PARKING ROUTE
- PERMIT PARKING
- BIKE VALET DROP OFF FOR REMOTE PARKING





Complimentary Secure Bike Valet & Storage Service - *On-Site Parking Pass Holders*

USAT will offer a complimentary and secure bike valet and storage service at no charge at the venue. For those wishing to utilize this service, it will be located at the venue southeast parking lot near the marina. Athletes who check their bike in to this location will have unlimited, secure access to the bike storage area (after they have picked up their packet) on the following days and hours (no exceptions!): **This is MANDATORY and MUST BE DONE ONE DAY PRIOR TO YOUR FIRST RACE.**

-
- **Wednesday, June 4:** 11:00am – 6:30pm (last pickup at venue)
 - **Thursday, June 5:** 6:30am – 8:30pm
 - **Friday, June 6:** 6:30am – 6:45pm
 - **Saturday, June 7:** 4:40am – 7:00pm
 - **Sunday, June 8:** 5:00am – 2:30pm

Athletes are responsible for transporting their bike from this area to transition for racing. It must be the athlete retrieving their bike (no friend, spouses, etc.) - no exceptions. Athletes must have already picked up their packet prior to using this service.

No bikes may be left in transition overnight.



BIKE VALET

DROP OFF
FOR REMOTE PARKING
PASS HOLDERS



PRESENTED BY
Mutual of Omaha

KEY

-  BIKE VALET ROUTE
-  BIKE VALET DROP OFF FOR REMOTE PARKING

COMPLIMENTARY SECURE BIKE VALET AND STORAGE SERVICE

USAT will offer a complimentary and secure bike valet and storage service at no charge at the venue. For those wishing to utilize this service, it will be located at the venue in southeast parking lot near marina. Athletes who check their bike in to this location will have unlimited, secure access to the bike storage area (after they have picked up their packet) on the following days and hours (no exceptions!): **This is MANDATORY and MUST BE DONE ONE DAY PRIOR TO YOUR FIRST RACE.**

- **Wednesday, June 4:** 11:00am – 6:30pm (last pickup at venue)
- **Thursday, June 5:** 6:30am – 8:30pm
- **Friday, June 6:** 6:30am – 6:45pm
- **Saturday, June 7:** 4:40am – 7:00pm
- **Sunday, June 8:** 5:00am – 2:30pm

Athletes are responsible for transporting their bike from this area to transition for racing. It must be the athlete retrieving their bike (no friend, spouses, etc.) - no exceptions. Athletes must have already picked up their packet prior to using this service.

No bikes may be left in transition overnight.

