

February 28, 2011

B.C. Safety Authority  
505 – 6<sup>th</sup> Street, Suite 200  
New Westminster, BC  
V3L 0E1

Attention: Mr. Jason Gill

**Re: Whistler Sliding Centre, Whistler, B.C.**  
**Bobsleigh Sport Experience Certification**

Please find enclosed the Operations Manual for the Bobsleigh Sliding Experience February 2011 which I have reviewed to conform to CSA Z267 as a licensed Amusement Ride. Documents include a summary of the track, bobsleighs, curves, speeds, operations and sleigh maintenance.

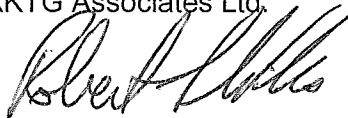
The Novice ride is a non-competitive slide in the lower half of the Whistler Sliding Centre track (a 90 m elevation drop) from a secure dead-stop position at the Novice Start position through nine broad corners C7 to C16, ending at the Finish Building after the steep outrun to a full stop. The first six corners in the upper two thirds of the track are not part of the beginner public experience. Maximum speeds are developed in the range of 31 to 33 m/s; about three quarters of the recorded maximum speeds on the full length track during athletic competitions. Bobsleighs travelling at reduced speeds safely utilize about one-half of the available banked curves during this experience.

The Dammen ride is a non-competitive slide in the lower 3/4 portion of the Whistler Sliding Centre track (a 120m elevation drop) from a secure dead-stop position at the Dammen Start position through twelve broad corners C3 to C16, ending at the Finish Building after the steep outrun to a full stop. Maximum speeds are developed in the range of 33 to 36 m/s; about eighty five percent of the recorded maximum speeds on the full length track during athletic competitions. Bobsleighs safely utilize about two-thirds of the available banked curves during this experience.

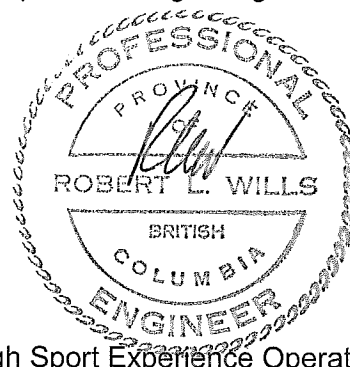
A safe, enjoyable sliding experience is offered by Whistler Sliding Centre for qualified public guests and potential athletes with an interest in the sport of Bobsleigh. Sliding participants in the final six curves C11 through C16 can be safely and easily viewed by spectators. Viewing is coordinated within the interior of the track behind protective guardrails well marked with Whistler Sliding Centre Safety Rules.

Please call me directly if you have any questions regarding the safe operation of this ride.

Yours very truly,  
RKTG Associates Ltd.



Robert L. Wills, P.Eng., Struct. Eng.  
BC, Alberta, Yukon  
Principal

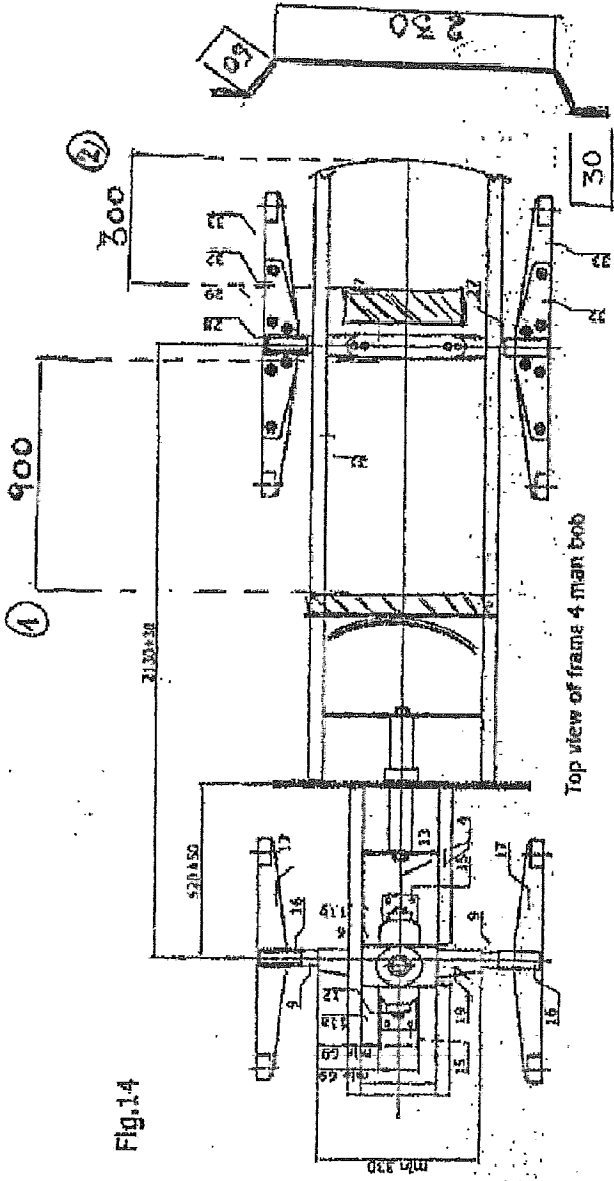


Encl. Whistler Sliding Centre Bobsleigh Sport Experience Operations Manual



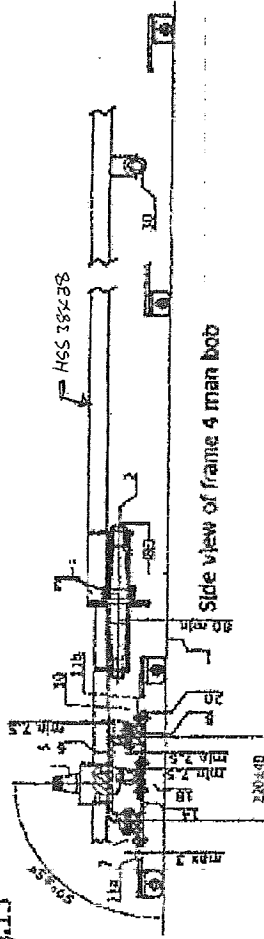
DANDREA EIVALDO PODAR s.n.c.  
 di Dandrea Oscar & Renzo  
**FABBRICAZIONE BOB**  
 P.zza del Lago 18D - Tel. 0438 867231  
 32043 Cordova d'Ampezzo (BL) - Italy  
 Reg. Imp. BL - C.F. P. IVA 00122280290

Fig.14

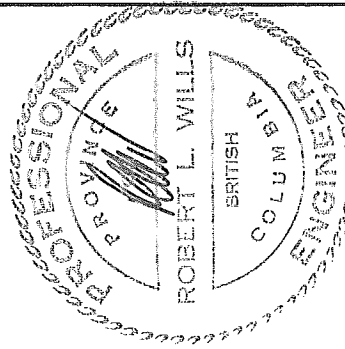


Top view of frame 4 man bob

Fig.15



Side view of frame 4 man bob

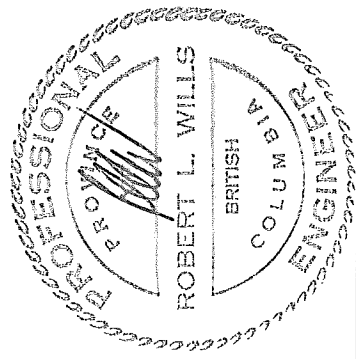


FULL VISUAL INSPECTION ANNUALLY  
 MAGNETIC PARTICLE FRAME WELDS BUSHINGS

INSPECT FRAME  
 JOINTS ANNUALLY  
 AT FRONT AXEL  
 CONNECTION.

DATE	JAN 2011	ISSUED FOR	BCSA RECORD	EPD	13 JAN 2011	A
DRAWN	EPD	BY				
SCALE	AS NOTED	DESCRIPTION	WHISTLER SLIDING CENTRE			
APPROVED	RLW		WHISTLER, BC			
			BOBSLEIGH			
			DRAWING No. MP16-2-001			
			Rev A			

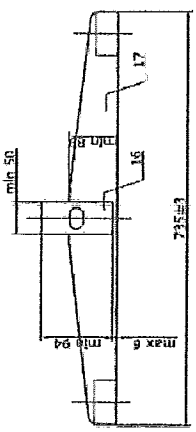
**RKTG**  
 ROBERTSON  
 KOTHELMAN  
 TREVIAN  
 GALLAGHER  
 ASSOCIATES  
 LTD  
 CONSULTING ENGINEERS



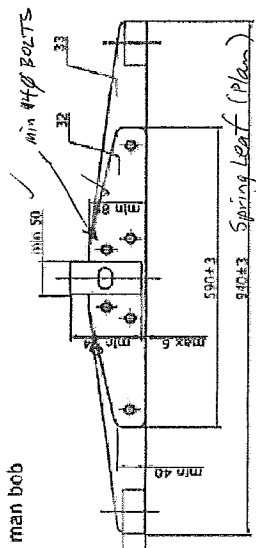
FULL VISUAL INSPECTION ANNUALLY  
MAGNETIC PARTICLE INSPECT BIANNUALLY

FRONT

Fig. 17 Runner carriers 4 man bob



REAR



7.5mm min

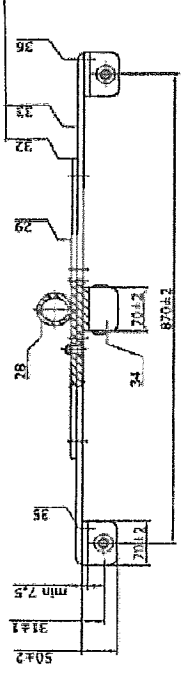


Fig. 16 Front view of frame 4 man bob  
FRONT AXEL ASSEMBLY

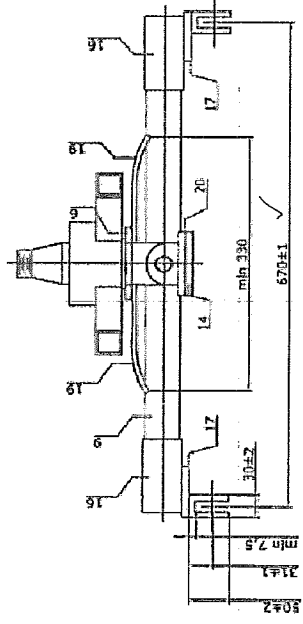


Fig. 18 Front axel 4 man bob

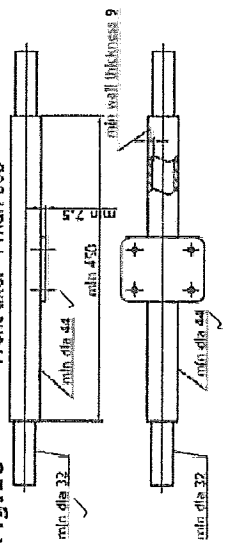
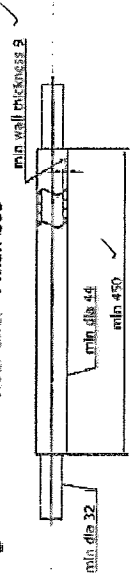


Fig. 19 Rear axel 4 man bob



All measurements in mm

DATE	JAN. 2011	ISSUED FOR	BCSA RECORD
DRAWN	EPD	DESCRIPTION	WHISTLER SLIDING CENTRE
SCALE	AS NOTED	BY	EPD
APPROVED	RLW	DATE	19 JAN 2011
		No.	A
		Rev	Rev A

**RKTG**  
ROBERTSON  
KOLBEIN  
TELVAN  
GALLAGHER  
ASSOCIATES  
LTD  
CONSULTING ENGINEERS

