

DETERIORATED ESCALATOR/MOVING WALK POWER CABLES & SUPERVISORY CABLES

Date of Issue: August 25, 2017

No: IB-ED 2017-05

Attention: Licensed Elevating Contractors, Building Owners, and Property Managers

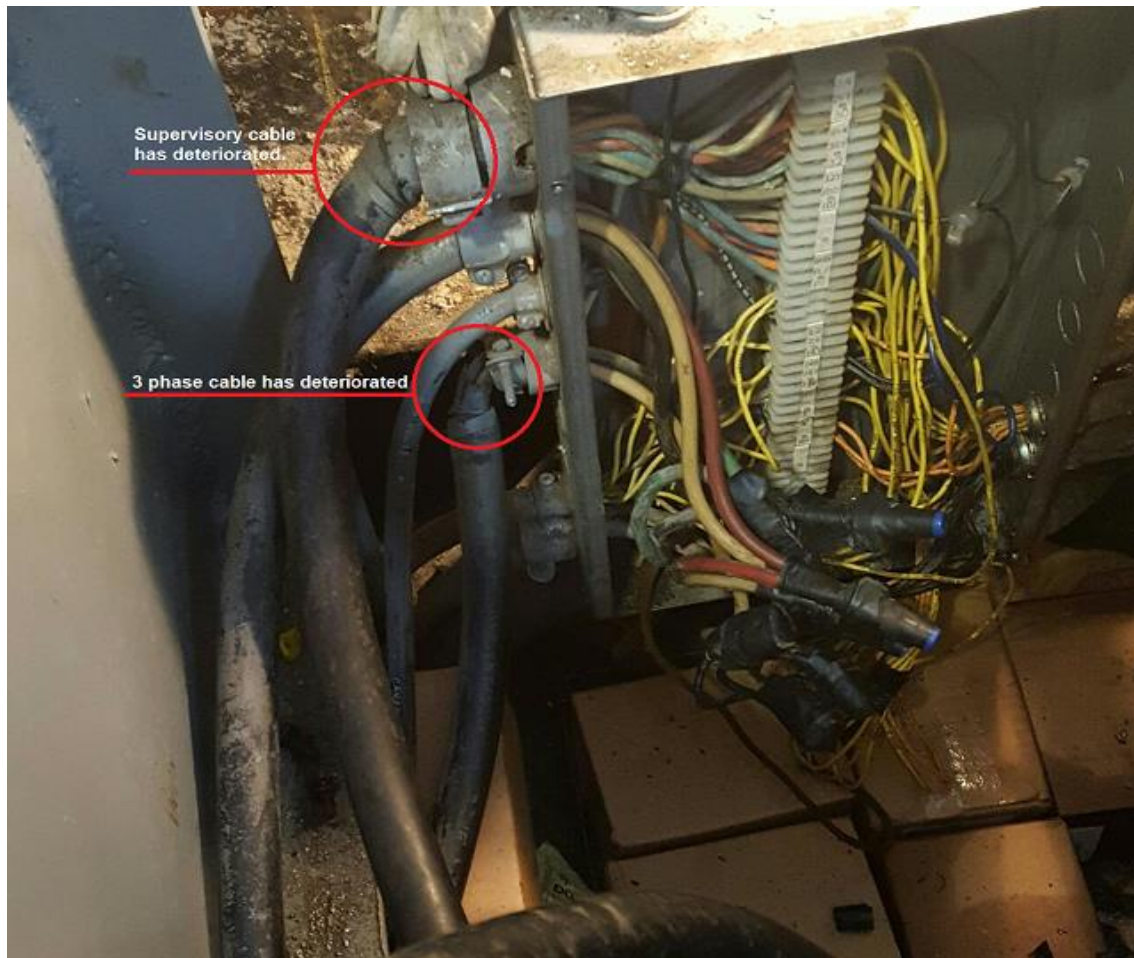
Topic: Deteriorated Escalator/Moving Walk Power Cables and Supervisory Cables

On some escalators and moving walks the insulation on the three-phase power cables and/or the supervisory cables has deteriorated to a point where the lines/wires become brittle. This can lead to the insulation breaking and potentially exposing the metal conductors. These cables can be found connecting the main disconnect to the controller, the controller to the motor, and/or the supervisory circuits to the truss components. The exposure of the metal leads increases the chance of severe electrical shock, fire, escalator failures, or miss-operations (see Figure 1 and 2).

Figure 1:



Figure 2:



While performing regular maintenance on escalators and moving walks, certified individuals should pay special attention when inspecting wiring, and check for deterioration or damage. If any deterioration or damage is found, certified individuals must take appropriate action to ensure safe operation.

Nav Chahal, Acting Safety Manager, Elevating, Passenger Ropeway, and Amusements

References:

Safety Standards Act
Electrical Safety Regulation
Elevating Devices Safety Regulation
Safety Standards General Regulation

BULLETIN NO: IB-ED-2017-05

Page 2 of 2