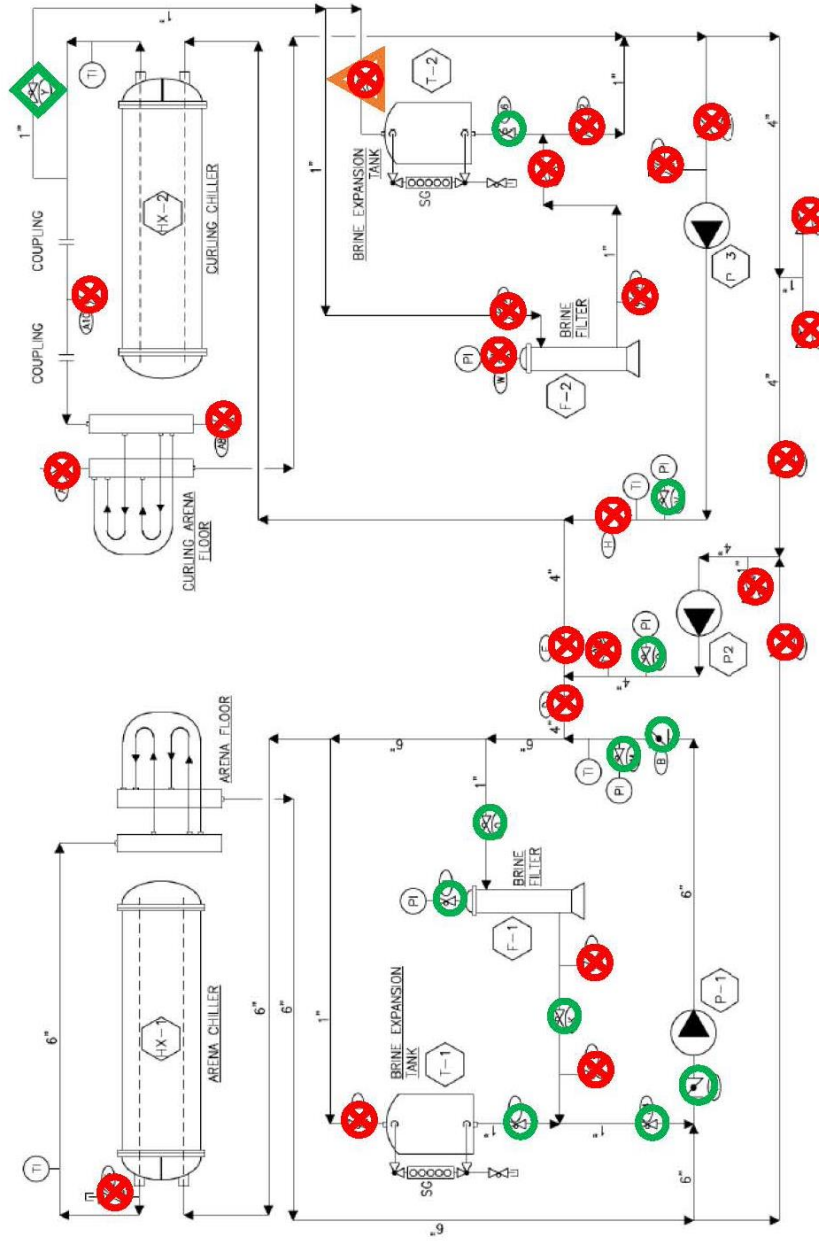


Appendix B: Valve Positions – Brine and Ammonia Systems



SEE DWG 494-R4B FOR BRINE FLOW VALVE AND EQUIPMENT ID

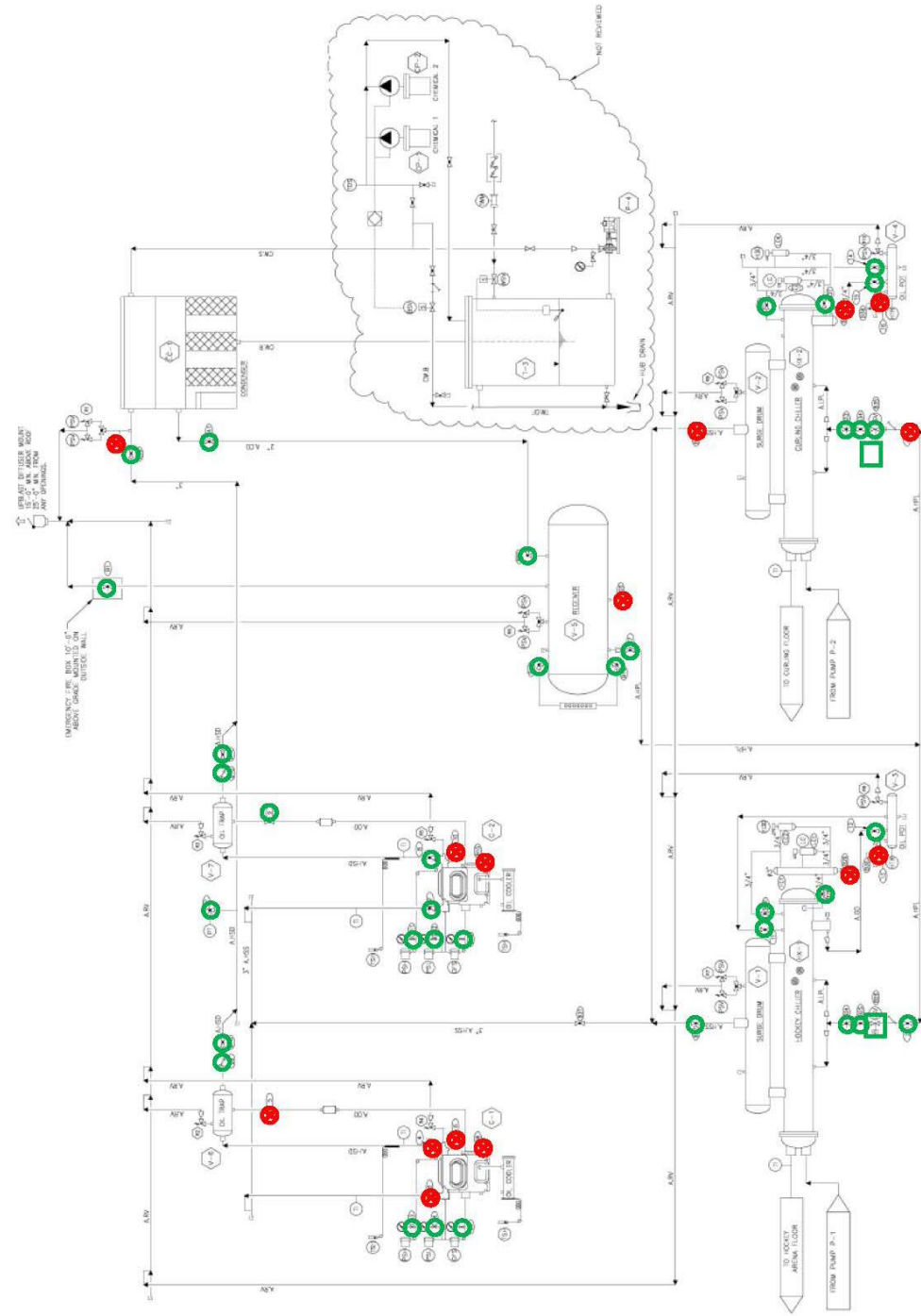
- Valve found in OPEN position
- ⊗ Valve found failed OPEN.

- ⊗ Valve found in CLOSED position
- ▲ Valve concluded to be effectively CLOSED. Valve handle found approximately 10 degrees from fully closed position and a small opening was possible, providing a possible leakage path but inhibiting pressure relief.

FERNIE ARENA
FERNIE, BC

P&ID
- BRINE FLOW

drawing number	revision
494-R4A	3



SEE DRAWING 484-022 FOR AMMONIA SYSTEM NAME AND EQUIPMENT'S ID

- Valve found in OPEN position
- ⊗ Valve found in CLOSED position
- Solenoid valves were examined in laboratory and considered functional at the time of the incident. Curing chiller solenoid found manually opened.