



REILLY
ARCHITECTURAL

METAL WINDOWS + DOORS



WATER MILL Steven Harris Architects | Photographer, Scott Frances



WATER MILL Steven Harris Architects | Photographer, Scott Frances

REILLY ARCHITECTURAL

Metal Offering

Reilly Architectural lives for a challenge. From custom hardwood to metal windows, there is no limit to the problems that can be solved at the Reilly engineering studio. We focus on highly custom wood and metal frame systems that are able to perform to the most exacting market requirements. From the introduction of a design all the way to on-site inspection, our team at Reilly Architectural manifests excellence — all for you. Featuring our metal offering, the next pages of content bring to life this limitless offering of custom product.

- Bespoke Hardware & Finishes
- Superior Energy & Sound Mitigating Performance
- Impact Rated Window & Door Assemblies

We build custom product to your exact specifications.
Anything you find within these pages can be customized to your needs.

CONTENTS

HARDWARE OPTIONS	4
PERFORMANCE VALUES + FEATURES + OPTIONS	8
AWNING	10
CASEMENT	11
FIXED UNIT	12
DOOR	13
SLIDE & FOLD DOOR	14
LIFT & SLIDE DOOR	15

HARDWARE OPTIONS

Working with architects and designers, hardware decisions on finishes are often made late in the process and are very difficult to coordinate. Reilly Architectural is here to help coordinate these details, working with you to help ensure the decorative hardware is properly fitted and integrated with our units.

We have the ability to coordinate custom hardware and finishes. In fact, we encourage it. Each piece of decorative hardware, hinges, levers & trim, cremone bolts, sash locks & lifts, etc. will be plated to match an approved control sample.

HERITAGE COLLECTION



Straight Window Handle
Foto code: 700205 SC



Straight Duplex Window Handle
Foto code: 701204 SC



Straight Triplex Window Handle
Foto code: 701254 SC



Straight Door Handle
Foto code: 700900 SC



Arched Window Handle
Foto code: 700201 SC



Arched Duplex Window Handle
Foto code: 701200 SC



Arched Triplex Window Handle
Foto code: 701250 SC



Curved Door Handle
Foto code: 700905 SC



Escutcheon
Foto code: 700910 SC

Finishes

We offer a variety of beautiful finishes for our hardware options. Contact your representative for more information.

HERITAGE COLLECTION



Satin Chrome

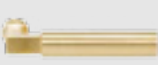


Dark Bronze




Matte Black

TIMELESS COLLECTION



Satin Brass



Satin Nickel

ONE COLLECTION



Satin Stainless Steel

TIMELESS COLLECTION



Cremone Window Handle
Foto code: H99710 SB - H99711 SB



Cremone Window Handle
Foto code: H99712 SB - H99713 SB



Cremone Window Handle
Foto code: H99716 SB - H99717 SB



Door Handle Escutcheons
Foto code: 750160 PB



Lift-Up Sliding Door Handle
Foto code: 750350 PC



Lift-Up Sliding Door Handle with Cylinder
Foto code: 750360 PC

ONE COLLECTION



Cremone Window Handle for Rod Coupling
Foto code: H99610-26 - H99611-26



XL Sprung Lever Handle Set on Rose
Foto code: 790040 SS



Door Handle Escutcheons
Foto code: 790700 SS



Lift-Up Sliding Door Handle
Foto code: 791530 SS



Lift-Up Sliding Door Handle with Cylinder
Foto code: 791550 SS

Metal allows for traditional or modern design, while providing virtually invisible lines that are necessary to achieve today's architectural concepts. We offer thermally and non-thermally broken systems with performance values to surpass typical requirements. Reilly offers steel window systems from leading Swiss manufacturer Ottostumm.

We are here to customize your metal project needs to your exact specification.



WATER MILL Steven Harris Architects | Photographer, Scott Frances

PERFORMANCE VALUES

GLASS PERFORMANCE VALUES Center of Glass		
GAP AND FILL	Triple Insulated Glass Low-E SKN 154 II + Krypton	Double Insulated Glass SN75 HT + Air
GLASS PANE THICKNESS	6mm per glass pane	6 mm per glass pane
U-VALUE	0.163	0.296
SHGC	.228	0.381
TVIS	45.6%	73.6%

All values are in reference to a fixed unit. Other variants will produce different results.

SYSTEM THERMAL PERFORMANCE Overall Material Performance Values						
MATERIAL	Bronze	Galvanized Steel	Stainless Steel	Bronze	Galvanized Steel	Stainless Steel
TRIPLE INSULATED GLASS 9/16 KRYPTON				Double Insulated Glass 5/8 AIR		
LOCATION AND TYPE OF COATING	SGG SKN 154II on S2			SN75 HT on S2		
U-VALUE	0.230	0.236	0.234	0.336	0.367	0.361
SHG	0.213	0.210	0.210	0.355	0.350	0.350
VIS. TRANS.	41.8%	41.8%	41.8%	67.5%	67.5%	67.5%

All values based on below below attributes:

W 47 inches x H 59 inches (Fixed)

Glass Pane Thickness 6 mm clear

All values are in reference to a fixed unit. Other variants will produce different results.

FEATURES + OPTIONS

SIZE RANGES		
SMALL SASH	39 x 96	Outside of this range is custom
LARGE SASH	44 x 108	
AWNING/HOPPER	86 x 48	
FIXED	86 x 86	

SCREENS
FIXED
HINGED
ROLL DOWN SCREEN
OTHER OPTIONS AVAILABLE UPON REQUEST

Materials + Finishes

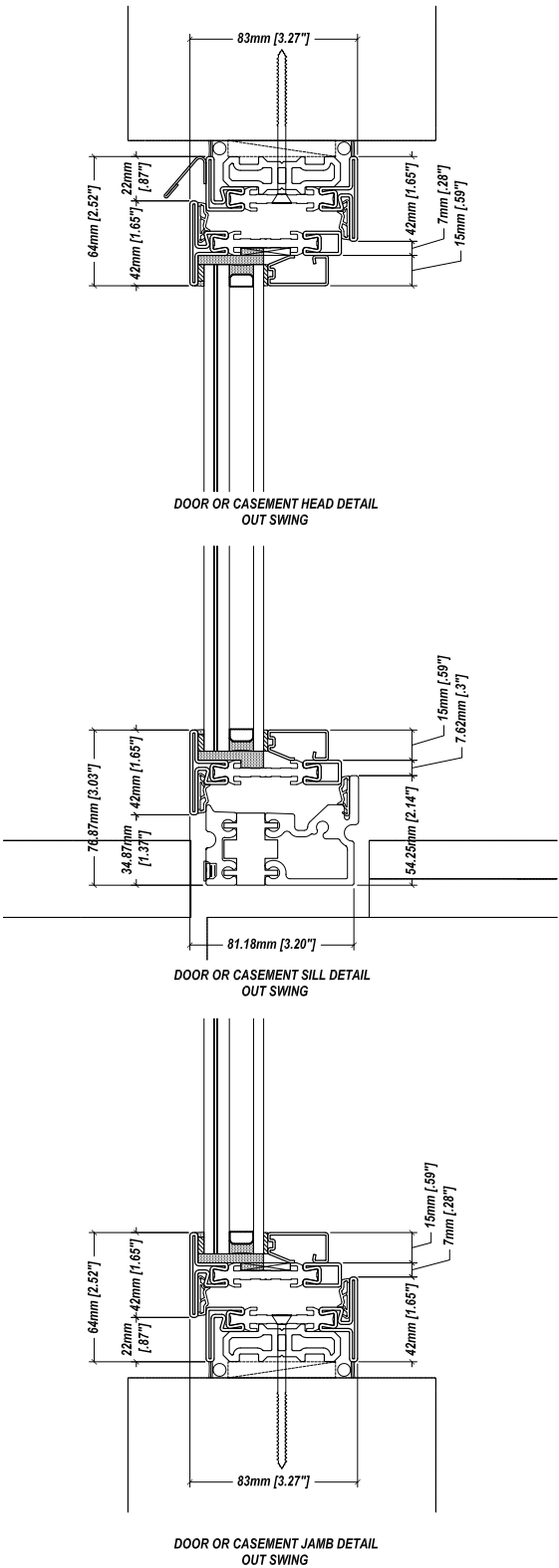
Materials

- Galvanized Steel
 - Stainless Steel
 - Architectural Bronze
 - Ask for additional options
- (Available upon request)

Finishes

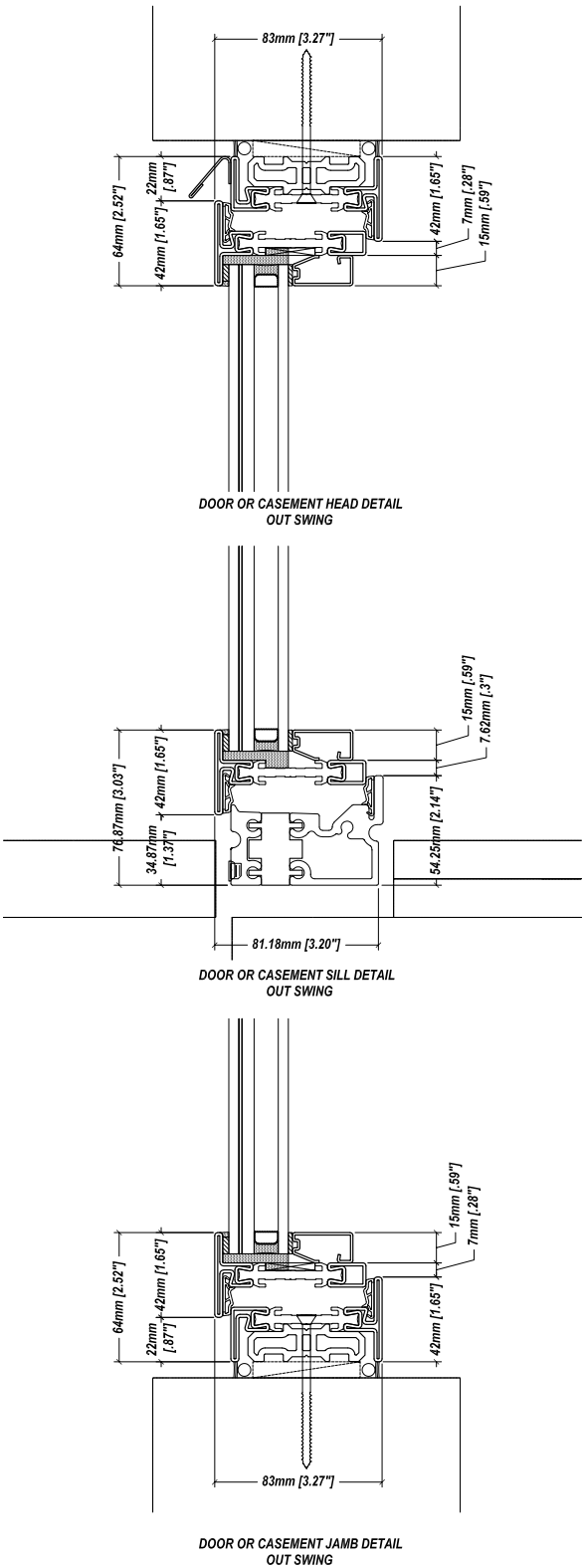
- Liquid Paint
- (Available for Galvanized and Stainless)
- Patina Monochromatic Black/Brown
- (For Bronze)
- Scotch-Brite
- (For Stainless)
- Optional for Stainless:
 - Polished
 - Glass Beaded
- Optional for Bronze:
 - Patina Monochromatic (non-brown/black)
 - Distressed
 - Raw/Glass Beaded
- Custom Finish Option as Split Materials

AWNING |

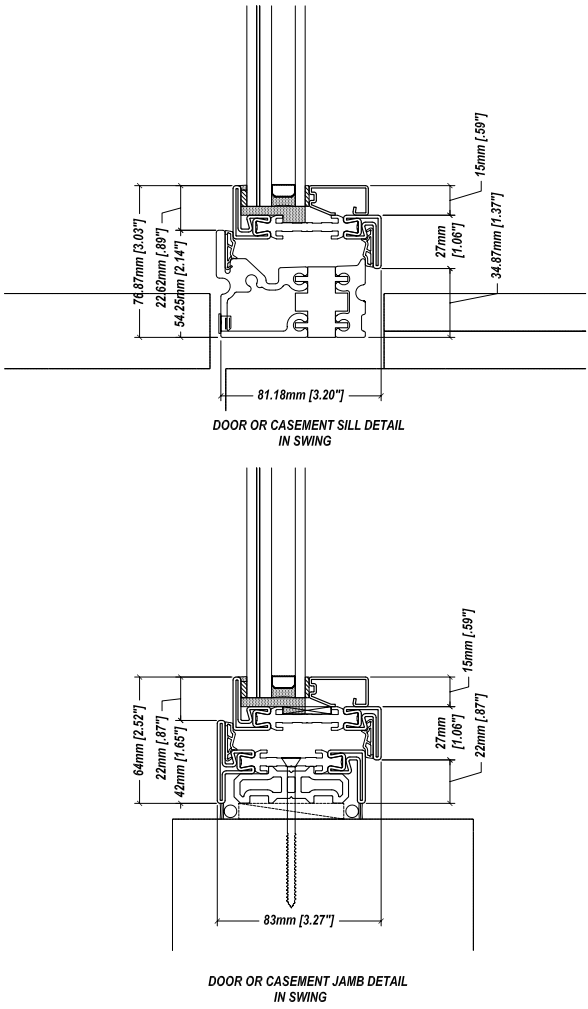


► CROSS-SECTIONS | Sizes indicated

CASEMENT | OUTSWING



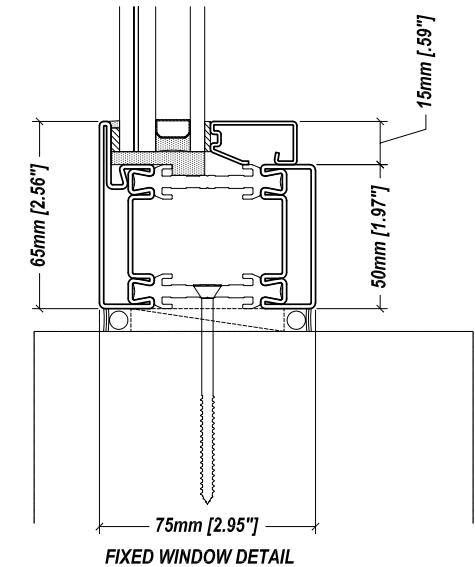
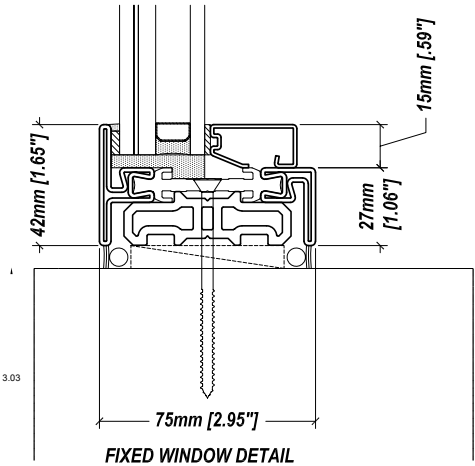
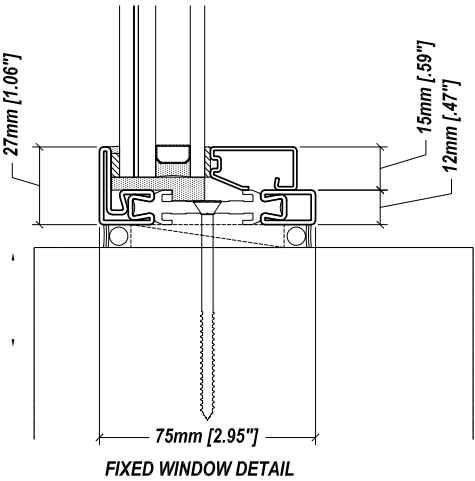
INSWING



These section drawings are representative of our metal offering. Please reach out to your Reilly sales team for more information on installation, and details in order to meet your specific product needs.

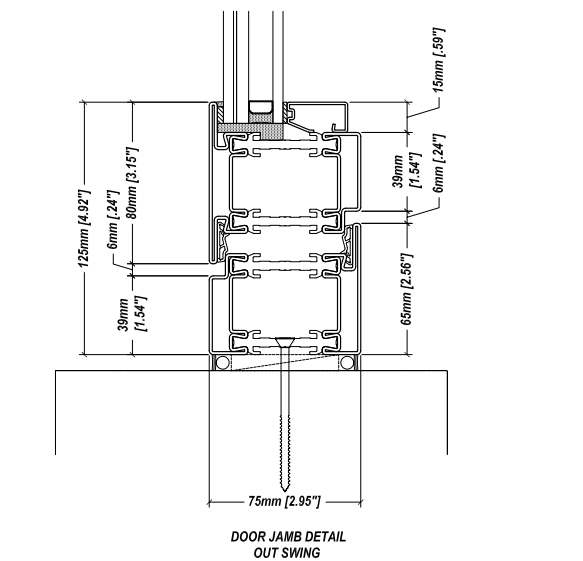
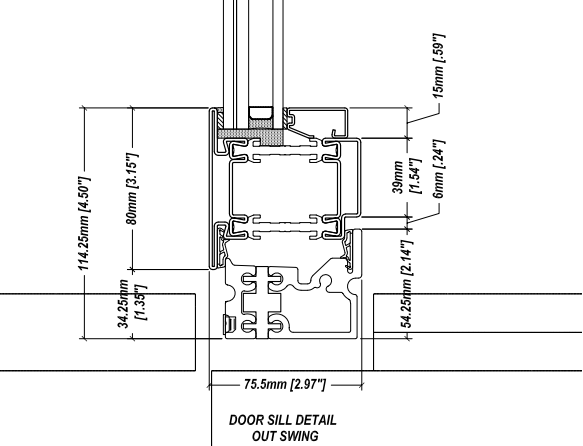
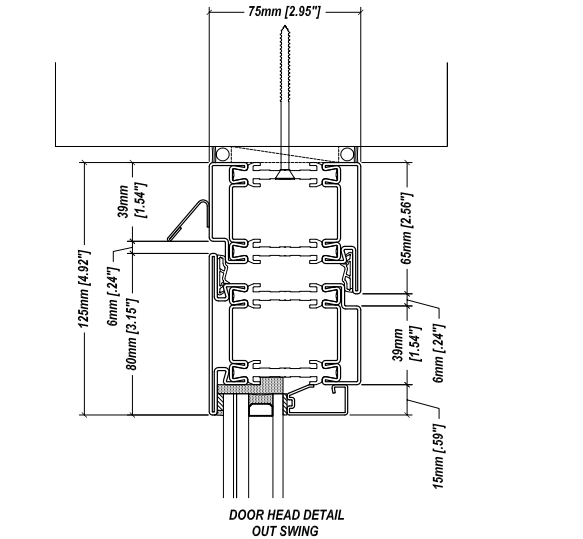
► CROSS-SECTIONS | Sizes indicated

FIXED UNIT |

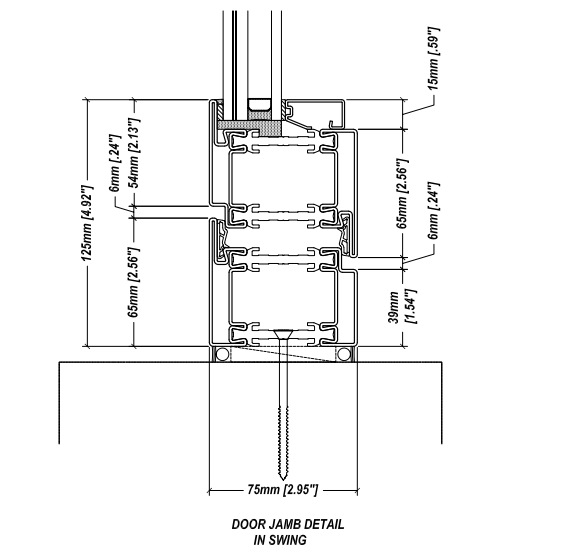
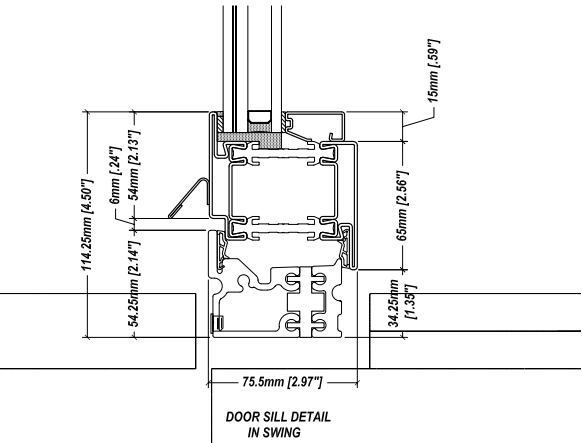


► CROSS-SECTIONS | Sizes indicated

DOOR | OUTSWING



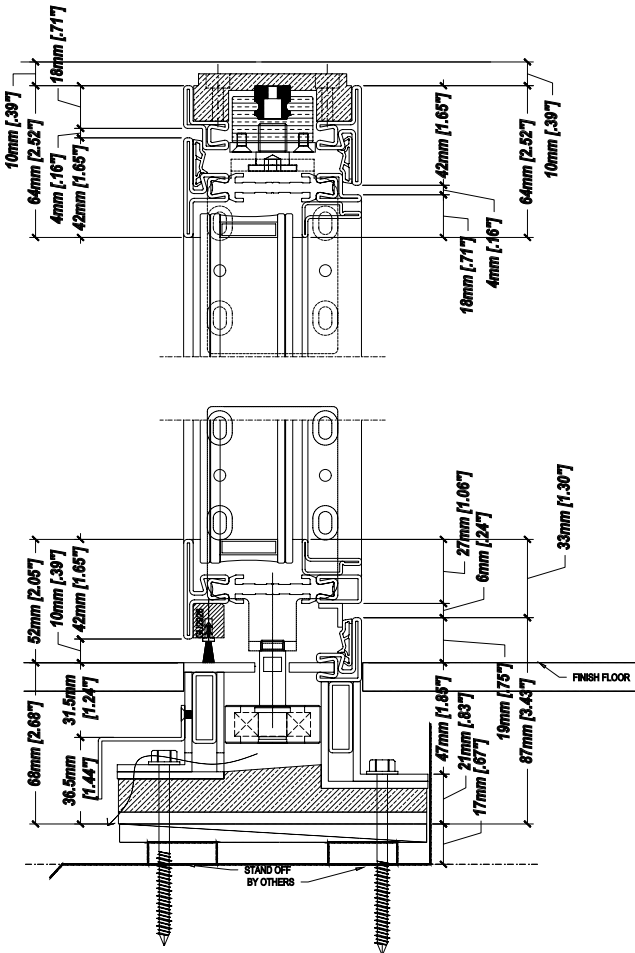
INSWING



These section drawings are representative of our metal offering. Please reach out to your Reilly sales team for more information on installation, and details in order to meet your specific product needs.

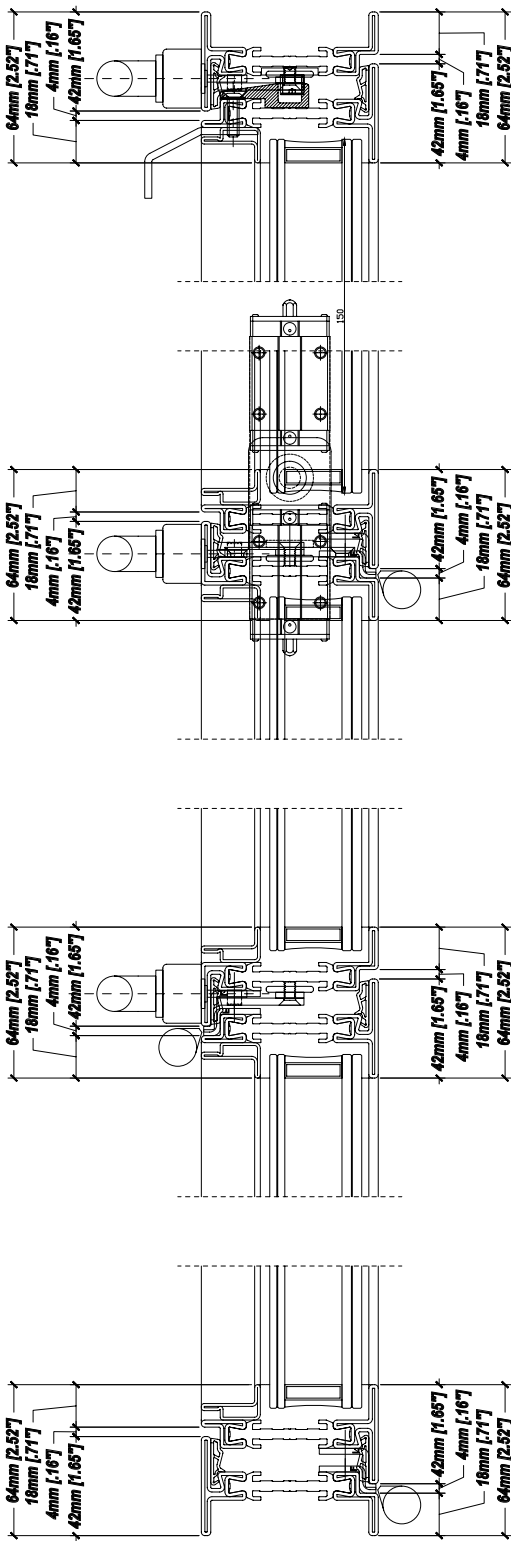
► CROSS-SECTIONS | Sizes indicated

SLIDE & FOLD | VERTICAL

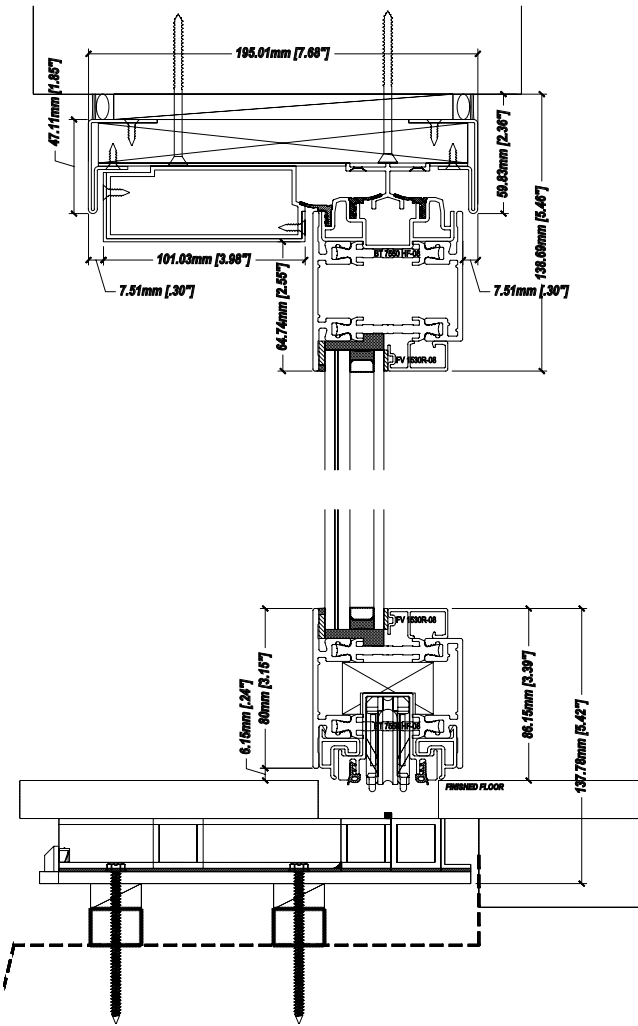


► CROSS-SECTIONS | Sizes indicated

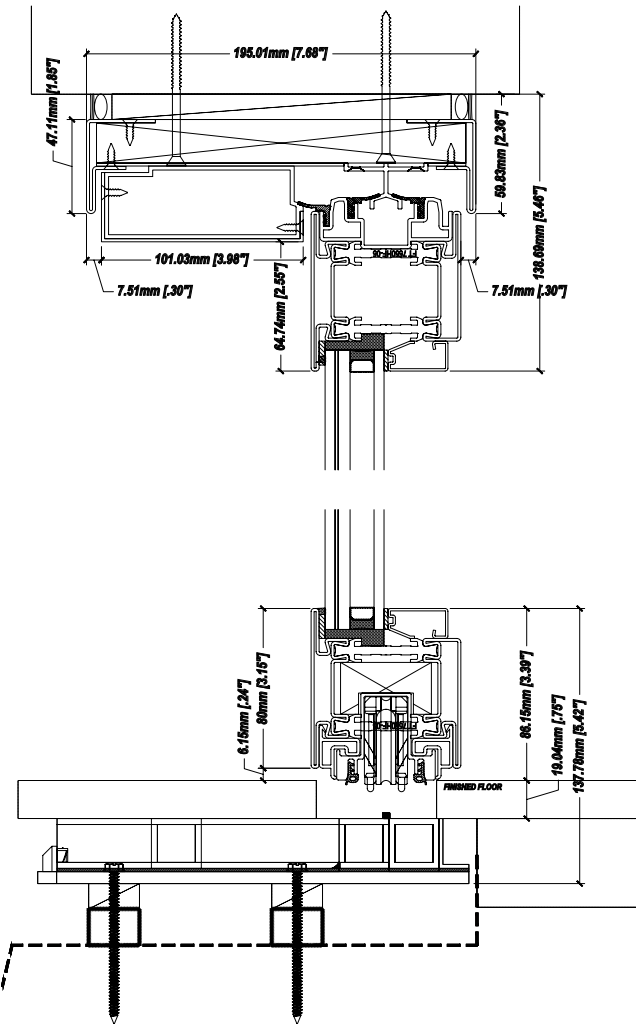
| HORIZONTAL



LIFT & SLIDE | VERTICAL – BRONZE



| VERTICAL – STEEL



These section drawings are representative of our metal offering. Please reach out to your Reilly sales team for more information on installation, and details in order to meet your specific product needs.

► CROSS-SECTIONS | Sizes indicated



OFFICES + SHOP

Reilly Architectural | 901 Burman Blvd, Calverton, NY 11933 (Calverton Executive Airpark)

PHONE: (631) 208-0710 | EMAIL: sales@reillyarch.com

Luxury Division
of *Pella*