



*Free Knitting Pattern*

LION BRAND® HEARTLAND®

# ASHLEE CABLED SWEATER

Pattern Number: M21134 HL



## SKILL LEVEL – INTERMEDIATE

### SIZES

S/M (L/1X, 2X/3X)

**Finished Chest** About 45 (54, 63) in. (114, (137, 160) cm)

**Finished Length** About 24 (25, 26) in. (61 (63.5, 66) cm)

**Note:** Pattern is written for smallest size with changes for larger sizes in parentheses. When only one number is given, it applies to all sizes. To follow pattern more easily, circle all numbers pertaining to your size before beginning.

### MATERIALS

- LION BRAND® HEARTLAND® (Art. #136)  
#350 Mount Rainier Tweed 6 (8, 10) balls
- LION BRAND® stitch markers
- LION BRAND® stitch holders
- LION BRAND® large-eyed blunt needle



### ADDITIONAL MATERIALS

Circular knitting needle size 9 (5.5 mm), 29 in. (73.5 cm) long or longer

Circular knitting needle size 9 (5.5 mm), 16in in. (40.5 cm) long or longer

### GAUGE

18 sts + 22 rows = about 4 in. (10 cm) in Cable pattern.

BE SURE TO CHECK YOUR GAUGE.

### STITCH EXPLANATIONS

**2/2 LC (2 over 2 left cross)** Slip 2 sts to cable needle and hold in front, k2, then k2 from cable needle.

**2/2 RC (2 over 2 right cross)** Slip 2 sts to cable needle and hold in back, k2, then k2 from cable needle.

**4/2 LPC (4 over 2 left purl cross)** Slip 4 sts to cable needle and hold in front, p2, then k4 from cable needle.

**4/2 RPC (4 over 2 right purl cross)** Slip 2 sts to cable needle and hold in back, k4, then p2 from cable needle.

**M1 (make 1)** An increase worked by lifting the horizontal strand lying between needles and placing it onto the left needle. Knit this new stitch through the back loop – 1 st increased.

### PATTERN STITCHES

#### Cable Pattern (worked over a multiple of 20 sts)

**Row 1 (RS):** \* K4, p12, k4; rep from \* across.

**Row 2 and all WS rows:** K the knits and p the purls.

**Row 3:** \* 2/2 LC, p12, 2/2 RC; rep from \* across.

For thousands of free patterns, visit our website [www.LionBrand.com](http://www.LionBrand.com)

To order visit our website [www.lionbrand.com](http://www.lionbrand.com) or call: (800) 258-YARN (9276) any time!

Copyright ©1998-2021 Lion Brand Yarn Company, all rights reserved. No pattern or other material may be reproduced -- mechanically, electronically, or by any other means, including photocopying - without written permission of Lion Brand Yarn Company.

**Row 5:** Rep Row 1.

**Rows 7 and 9:** Rep Row 3.

**Row 11:** \* 4/2 LPC, p8, 4/2 RPC; rep from \* across.

**Row 13:** \* P2, 4/2 LPC, p4, 4/2 RPC, p2; rep from \* across.

**Row 15:** \* P4, 4/2 LPC, 4/2 RPC, p4; rep from \* across.

**Row 17:** \* P6, k8, p6; rep from \* across.

**Row 19:** \* P6, 2/2 RC, 2/2 LC, p6; rep from \* across.

**Row 21:** Rep Row 17.

**Rows 23 and 25:** Rep Row 19.

**Row 27:** \* P4, 4/2 RPC, 4/2 LPC, p4; rep from \* across.

**Row 29:** \* P2, 4/2 RPC, p4, 4/2 LPC, p2; rep from \* across.

**Row 31:** \* 4/2 RPC, p8, 4/2 LPC; rep from \* across.

**Row 32:** K the knits and p the purls.

Rep Rows 1-32 for Cable pattern.

## **K2, p2 Rib (multiple of 4 sts + 2 additional sts)**

**Row 1 (WS):** P2, \* k2, p2; rep from \* to end of row.

**Row 2:** K the knit sts and p the purl sts.

Rep Row 2 for K2, p2 Rib.

## **NOTES**

1. Sweater is worked in 4 pieces: Back, Front, and 2 Sleeves.
2. The neckband is worked directly onto seamed Sweater.
3. Each piece is worked from the lower edge upwards beg with a lower ribbed band. Main part of each piece is worked in an all over Cable pattern.
4. A circular needle is used to accommodate the sts. Work back and forth on circular needle as if working with straight needles.
5. Cable pattern can be worked by following written instructions or reading Chart. Read RS rows of Chart from right to left and WS rows from left to right.
6. When you see 'as established' in the instructions, this means to continue in the current pattern st, lining up sts as in previous rows.
7. When you see work 'even' in the instructions, this means to continue on in the pattern st you have established without changing the st count by increasing, decreasing, or binding off.
8. The selvedge sts at the beginning and end of rows will disappear into the seams.

## BACK

With longer circular needle, cast on 102 (122, 142) sts.

Work in K2, p2 Rib pattern until piece measures about 3 in. (7.5 cm) from beg, end with a WS row as the last row you work.

### *Cable Pattern*

**Row 1 (RS):** Sl 1 (selvedge), work Row 1 of Cable pattern to last st, p1 (selvedge).

Slipping first st and purling last st (for selvedge sts), continue in Cable pattern as established until piece measures about 22 (23, 24) in. (56 (58.5, 61) cm) from beg, end with a WS row as the last row you work.

### *Shape Shoulders*

**Rows 1-10:** Bind off 5 (7, 8) sts, work in Cable pattern as established to end of row – you will have 52 (52, 62) sts when all bind offs have been completed.

**Rows 11 and 12:** Bind off 6 (5, 9) sts, work in Cable pattern as established to end of row.

Place rem 40 (42, 44) sts on a holder for back neck.

## FRONT

Work same as Back to Shape Shoulders, end with a WS row as the last row you work.

### *Shape Neck and Shoulders*

Place a marker on each side of center 20 (22, 24) sts for front neck.

**Row 1 (RS):** Bind off 5 (7, 8) sts, work in Cable pattern as established to first marker for left side of neck; place sts between markers on holder and remove markers; join a 2nd ball of yarn and work in Cable pattern as established to end of row for right side of neck – 36 (43, 51) sts for left side and 41 (50, 59) sts for right side.

You will now work both sides AT THE SAME TIME using separate balls of yarn.

**Row 2 (WS):** On right side, bind off 5 (7, 8) sts, work in Cable pattern to end of side; on left side, bind off 4 sts, work in Cable pattern to end of side – 32 (39, 47) sts for left side and 36 (43, 51) sts for right side.

**Row 3:** On left side, bind off 5 (7, 8) sts, work in Cable pattern to end of side; on right side, bind off 4 sts, work in Cable pattern to end of side – 27 (32, 39) sts for left side and 32 (39, 47) sts for right side.

**Row 4:** On right side, bind off 5 (7, 8) sts, work in Cable pattern to end of side; on left side, bind off 3 sts, work in Cable pattern to end of side – 24 (29, 36) sts for left side and 27 (32, 39) sts for right side.

**Row 5:** On left side, bind off 5 (7, 8) sts, work in Cable pattern to end of side; on right side, bind off 3 sts, work in Cable pattern to end of side – 19 (22, 28) sts for left side and 24 (29, 36) sts for right side.

**Row 6:** On right side, bind off 5 (7, 8) sts, work in Cable pattern to end of side; on left side, bind off 2 sts, work in Cable pattern to end of side – 17 (20, 26) sts for left side and 19 (22, 28) sts for right side.

**Row 7:** On left side, bind off 5 (7, 8) sts, work in Cable pattern to end of side; on right side, bind off 2 sts, work in Cable pattern to end of side – 12 (13, 18) sts for left side and 17 (20, 26) sts for right side.

**Row 8:** On right side, bind off 5 (7, 8) sts, work in Cable pattern to end of side; on left side, bind off 1 st, work in Cable pattern to end of side – 11 (12, 17) sts for left side and 12 (13, 18) sts for right side.

**Row 9:** On left side, bind off 5 (7, 8) sts, work in Cable pattern to end of side; on right side, bind off 1 st, work in Cable pattern to end of side – 6 (5, 9) sts for left side and 11 (12, 17) sts for right side.

**Row 10:** On right side, bind off 5 (7, 8) sts, work in Cable pattern to end of side; on left side, work in Cable pattern to end of side – 6 (5, 9) sts for each side.

**Row 11:** Bind off rem 6 (5, 9) left side sts; on right side, work in Cable pattern to end of side.

Bind off rem 6 (5, 9) right side sts.

## **SLEEVES (make 2)**

With longer circular needle, cast on 42 sts.

Work in K2, p2 Rib pattern until piece measures about 3 in. (7.5 cm) from beg, end with a WS row as the last row you work.

### ***Cable Pattern***

**Row 1 (RS):** Sl 1 (selvedge), work Row 1 of Cable pattern to last st, p1 (selvedge).

Slipping first st and purling last st, continue in Cable pattern as established for 3 (1, 1) row(s).

**Increase Row (RS):** Sl 1, M1, work in Cable pattern as established to last st, M1, p1 – 44 sts.

Rep last 4 (2, 2) rows for 19 (24, 29) more times, working new sts into Cable pattern – 82 (92, 102) sts.

Slipping first st and purling last st, continue even in Cable pattern as established until piece measures about 18 (17, 16) in. (45.5 (43, 40.5) cm) from beg.

### ***Shape Cap***

**Next 12 Rows:** Bind off 5 (6, 7) sts, work in Cable pattern as established to end of row – 22 (20, 18) sts rem when all bind offs have been completed.

Bind off rem 22 (20, 18) sts.

## **FINISHING**

Sew shoulder seams.

### ***Neckband***

From RS with shorter circular needle, k40 (42, 44) back neck sts from holder, pick up and k18 sts evenly spaced along left neck edge, k20 (22, 24) front neck sts from holder, pick up and k18 sts evenly spaced along right neck edge – 96 (100, 104) sts.

Place marker for beg of rnd. Join by working the first st on left hand needle with the working yarn from the right hand needle.

**Rnds 1-6:** \* K2, p2; rep from \* around.

Bind off in rib.

Place markers on each side of Front and Back, about 9 (10, 11) in. (23 (25.5, 28) cm) from shoulder seams. Sew Sleeves between markers.

Sew side and Sleeve seams.

Weave in ends.

Block to measurements.

## ABBREVIATIONS

**beg** = begin(ning)(s)

**k** = knit

**p** = purl

**rem** = remain(ing)

**rep** = repeat(s)(ing)

**rnd(s)** = round(s)

**RS** = right side

**sl** = slip

**st(s)** = stitch(es)

**WS** = wrong side

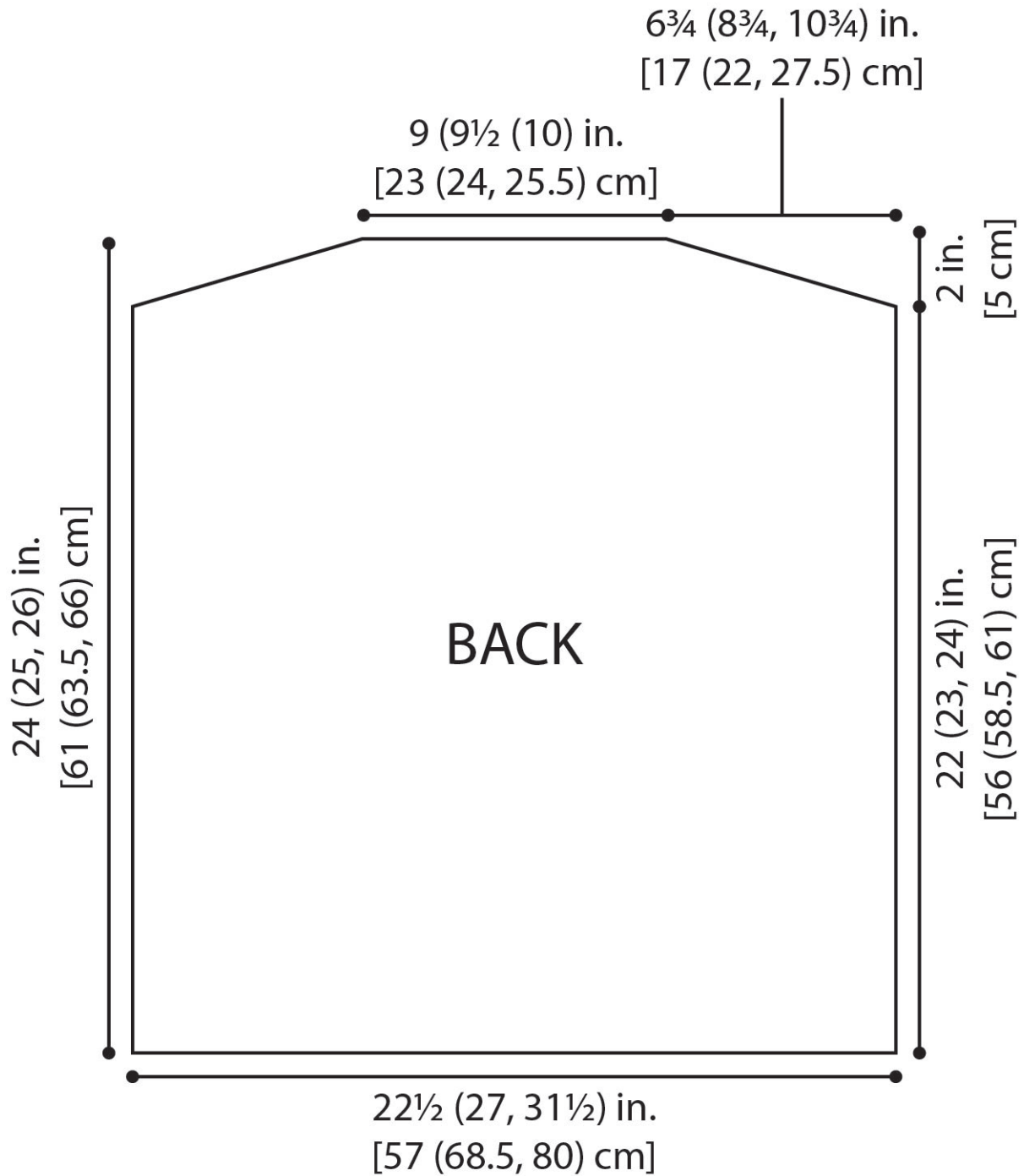
*Every effort has been made to produce accurate and complete instructions. We cannot be responsible for variance of individual knitters or crocheters, human error, or typographical mistakes.*

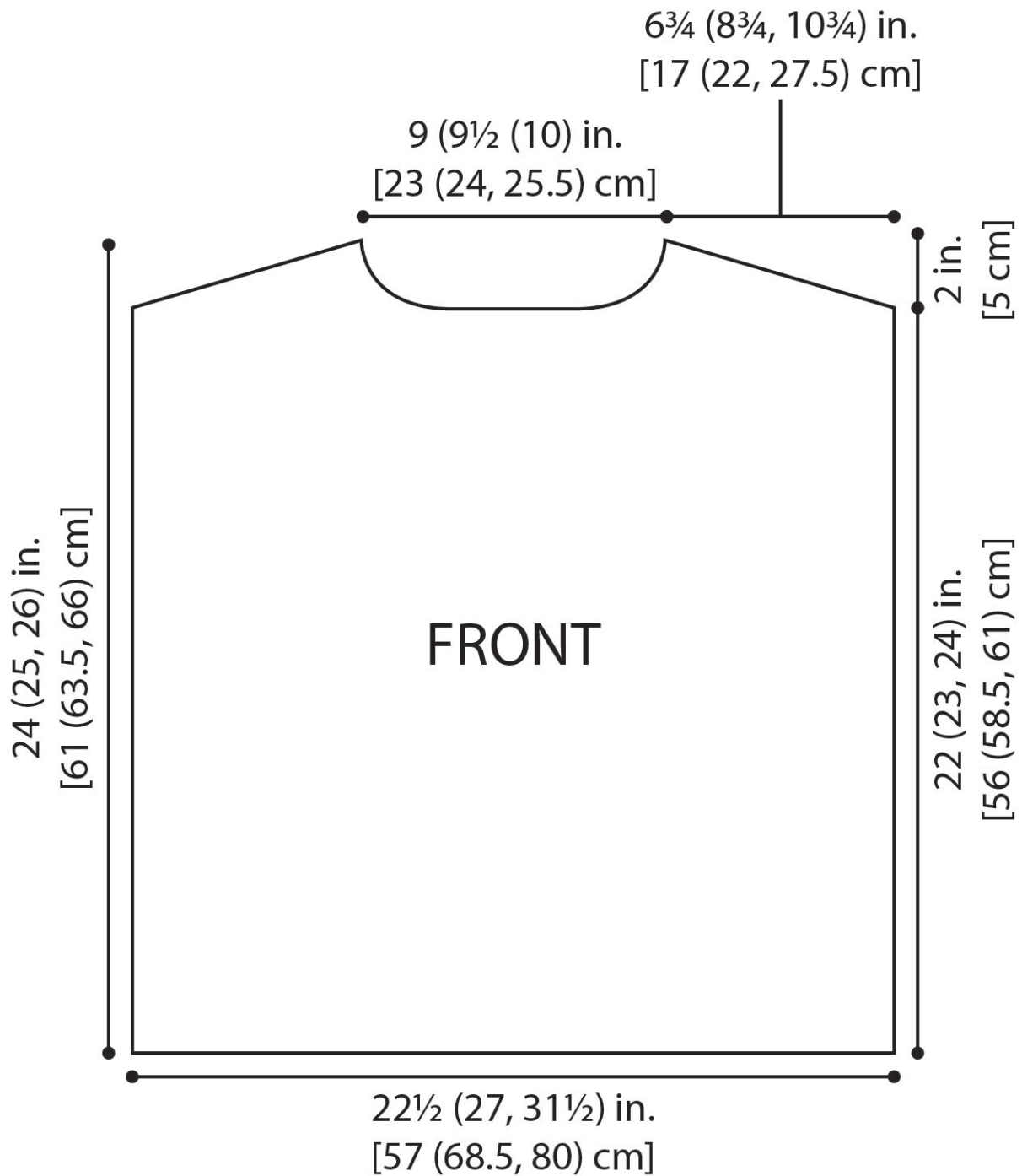
*©2021 Lion Brand Yarn Company, all rights reserved.*

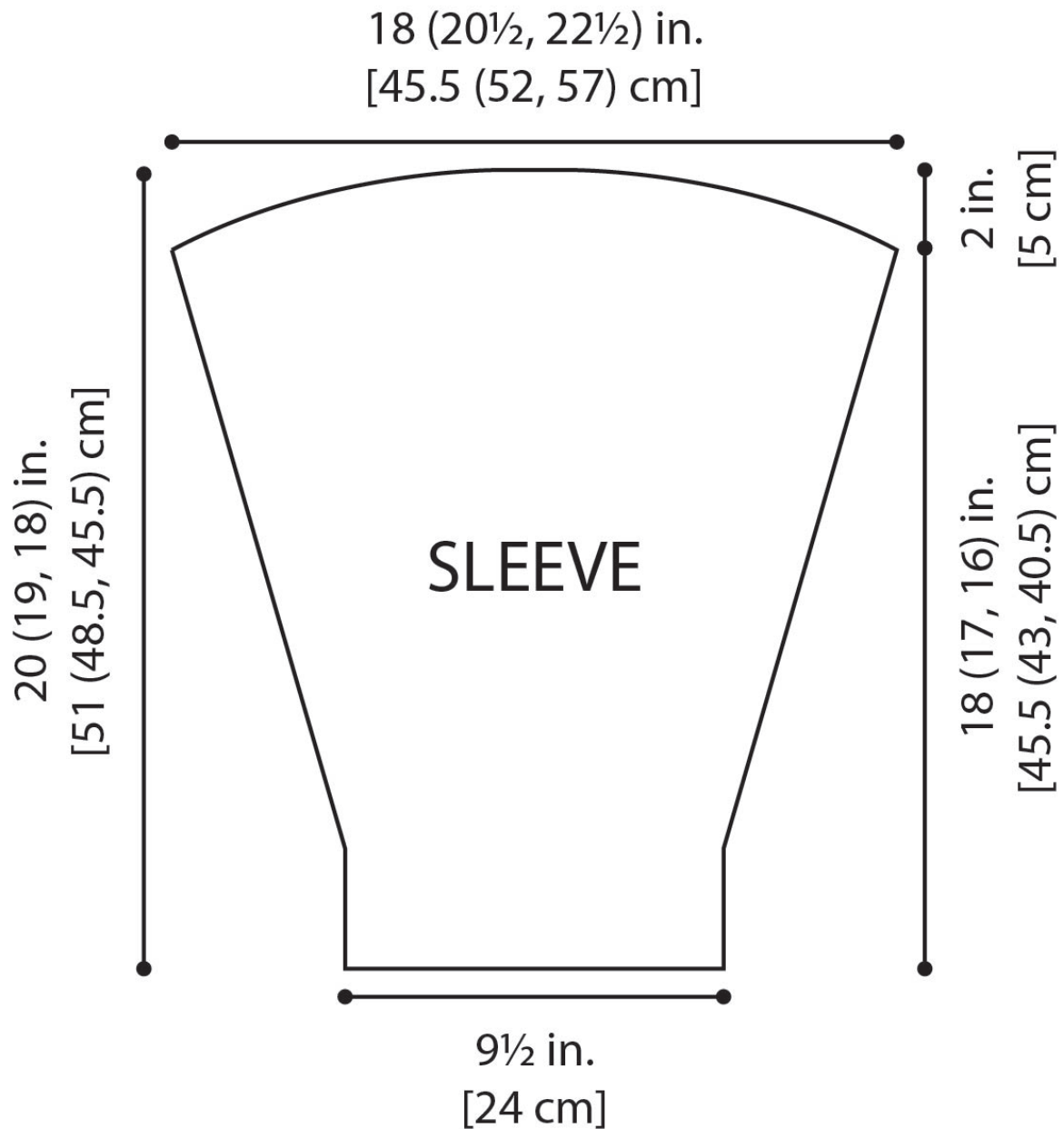
For thousands of free patterns, visit our website [www.LionBrand.com](http://www.LionBrand.com)

To order visit our website [www.lionbrand.com](http://www.lionbrand.com) or call: (800) 258-YARN (9276) any time!

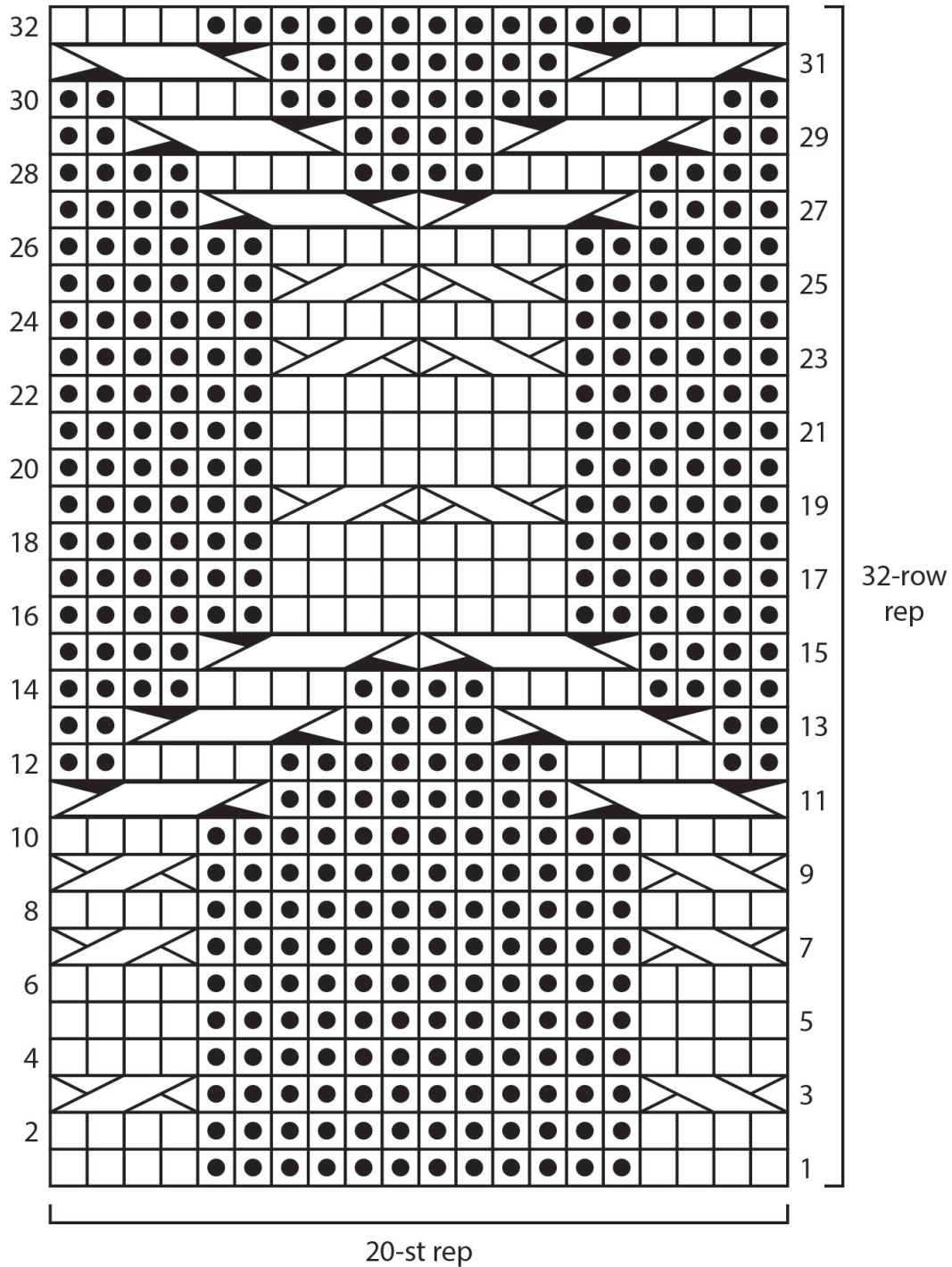
Copyright ©1998-2021 Lion Brand Yarn Company, all rights reserved. No pattern or other material may be reproduced -- mechanically, electronically, or by any other means, including photocopying - without written permission of Lion Brand Yarn Company.







## Cable Pattern



### KEY

□ knit on RS, purl on WS

● purl on RS, knit on WS

2/2 LC (2 over 2 left cross)

2/2 RC (2 over 2 right cross)

4/2 LPC (4 over 2 left purl cross)

4/2 RPC (4 over 2 right purl cross)

For thousands of free patterns, visit our website [www.LionBrand.com](http://www.LionBrand.com)

To order visit our website [www.lionbrand.com](http://www.lionbrand.com) or call: (800) 258-YARN (9276) any time!

Copyright ©1998-2021 Lion Brand Yarn Company, all rights reserved. No pattern or other material may be reproduced -- mechanically, electronically, or by any other means, including photocopying - without written permission of Lion Brand Yarn Company.