

Mexico Transportation Market Update

June 24, 2022



Transportation Market Update

Schneider's goal is to provide the latest market insights to help you navigate the ongoing market volatility.

Whether moving a critical load, keeping your supply chain going or long-term planning, Schneider remains committed to safely and securely delivering your freight.

Schneider leverages data and analytics from multiple sources to provide the most up-to-date insights available including, but not limited to, FTR, DAT, FreightWaves SONAR, Cass Information Systems, Inc., FleetOwner, FMCSA, The New York Times, ATRI and Transport Topics. For the latest information and updates, visit [Schneider's Trending Topics page](#).



Celebrating 30 years of serving you!

2022 marks 30 years that Schneider has been servicing the Mexico cross-border market. Our decades of cross-border freight experience mean your cargo moves throughout North America without delay. We have the assets, facilities, associates and third-party relationships in place to deliver safely, securely and on-time. Throughout the year you will see more content celebrating the last 30 years!



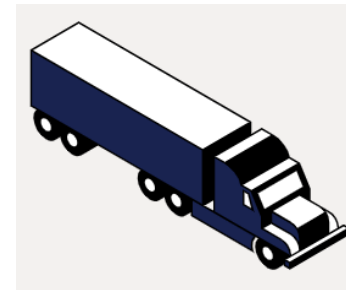
Dry Van Truckload



Dedicated



Intermodal



Brokerage



Bulk

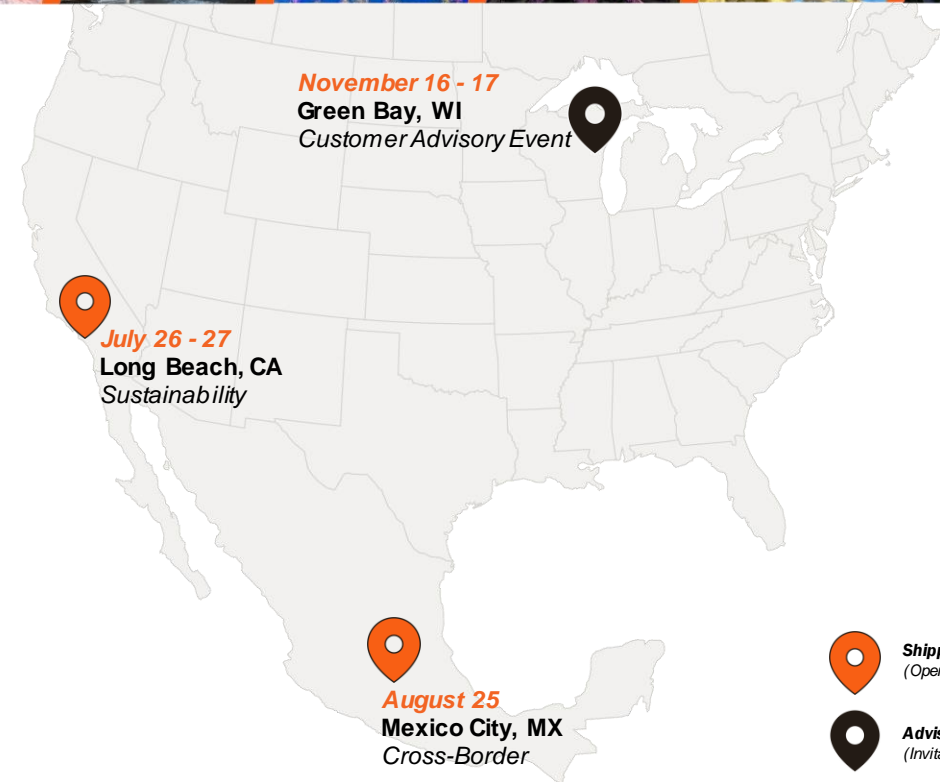


Logistics

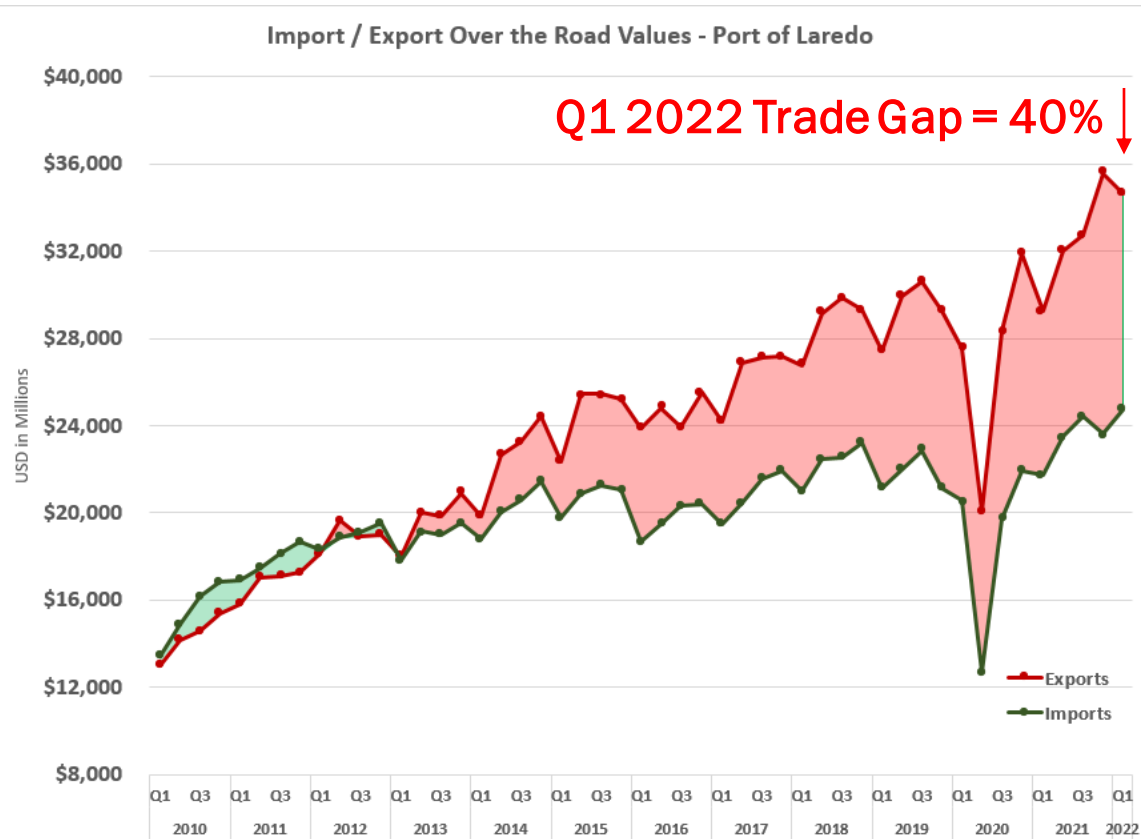
Join us in person for any of our 2022 Shipper Insight Series events

- Interested in **learning** the latest strategies for navigating the ever-changing transportation industry?
- Want to network with your industry peers and the Schneider team?
- If you answered **yes** to either of these questions, you would find great value in attending any of the Shipper Insight Series events!

[Learn more and register](#)



In the news: Q1 2022 Mexico import/export statistics



The National Institute of Statistics and Geography, INEGI, recently released the Mexico import/export statistics for Q1 2022.

In comparison to previous years, the data shows that the export gap between Mexico and the U.S. has continued to widen, with two northbound shipments for every southbound shipment.

If you haven't already, it's imperative for your long-term strategy to explore your northbound multimodal capacity options. Our team of cross-border experts would love to help you solve your capacity challenges.

Source: National Institute of Statistics and Geography (INEGI)

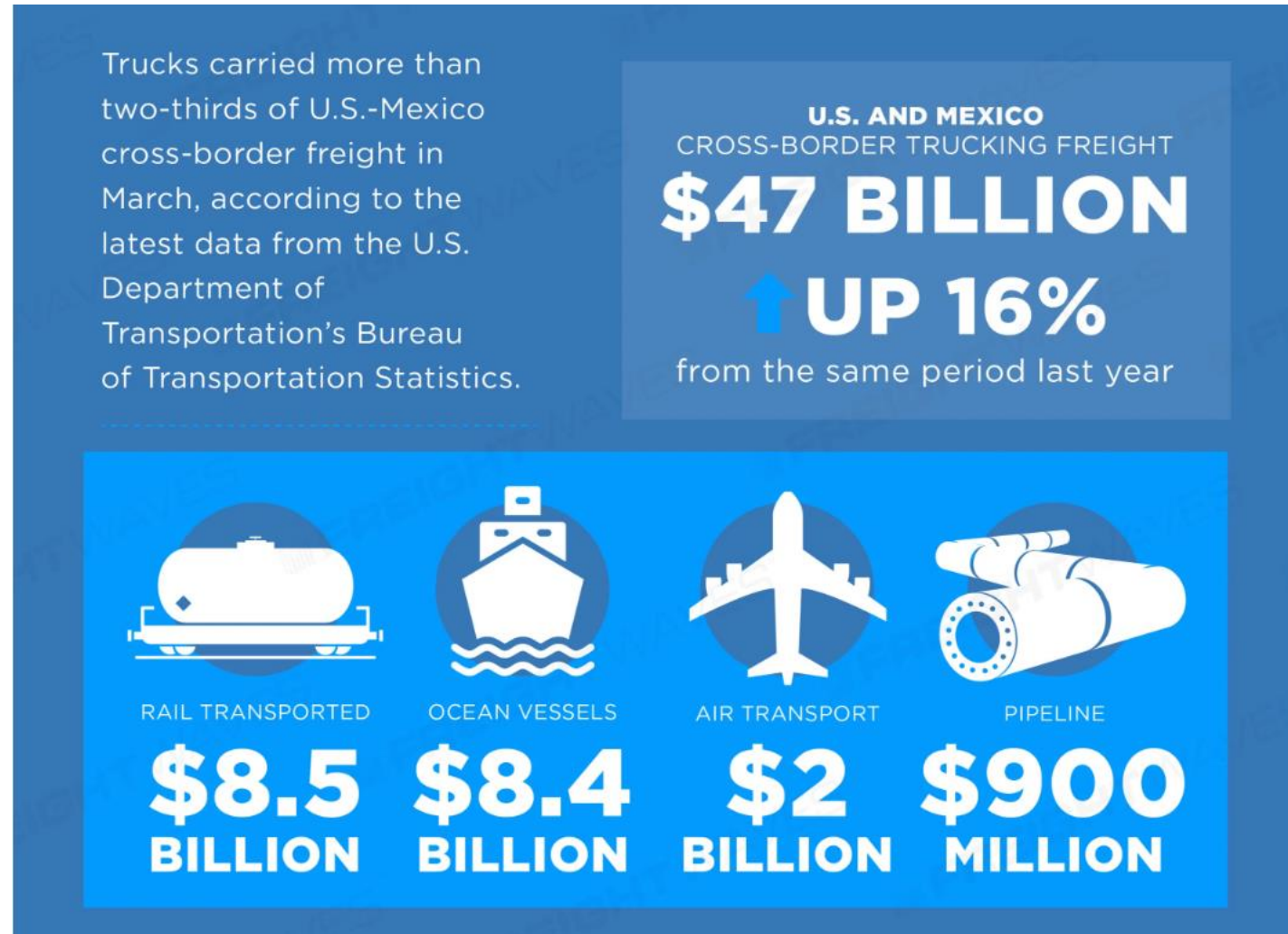
* Port of Laredo (WTB & Colombia) values for first 11 months of 2021 as reported by INEGI / Banco de Información Económica

Source: INEGI; May 2022

In the news: Trucks carried 68% of all US-Mexico cargo moved in March 2022

- The large US-Mexico trade gap and fact that more than 2/3 of cross-border freight is moved via Van Truckload, show us a large cross-border capacity opportunity.
- Intermodal and Dedicated are great alternative transportation solutions that we offer, as well as network optimization studies to create the best strategy for your network.

[>> View Infographic](#)



Source: freightwaves.com; June 2022

In the news: US Manufacturers Bring Jobs Closer to Home

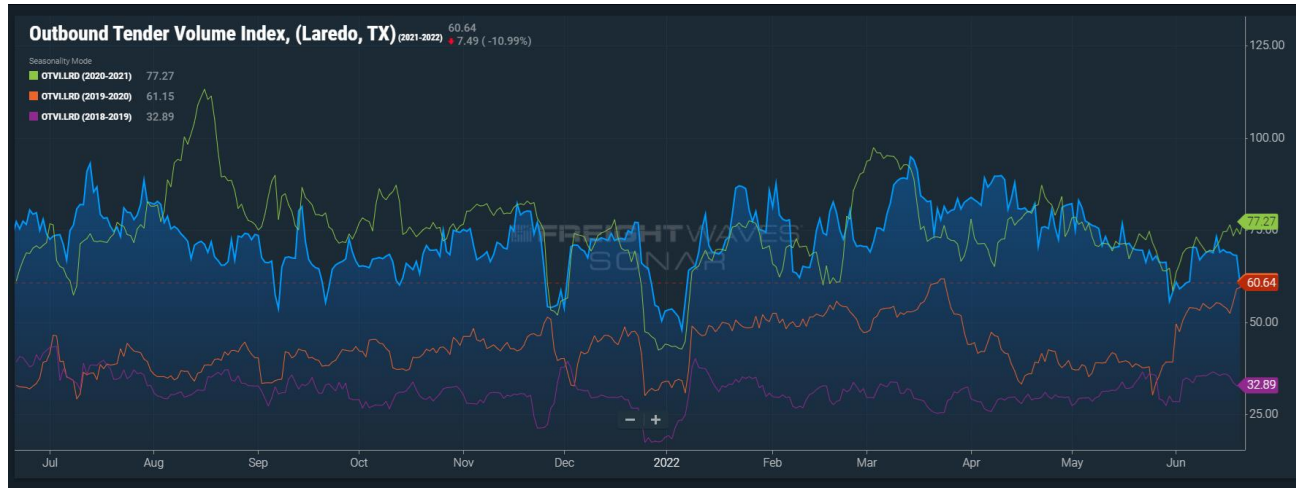
- Manufacturers are facing an onslaught of difficult challenges today — but many are finding nearshoring has become the golden solution.
- Barbi Reuter, CEO and principal at Cushman & Wakefield affiliate PICOR, serving as 2022 CREW Network global board president, says that bringing jobs back to North America (Mexico), increases predictability and reliability of the supply chain while retaining favorable labor access and costs compared to the US.
- The nearshoring trend has only accelerated during the pandemic. According to data from the Thomas Report State of North American Manufacturing 2021 Annual Report, **83% of manufacturers are likely or extremely likely to reshore jobs**, up from only 54% in March 2020, before the pandemic was a factor.“



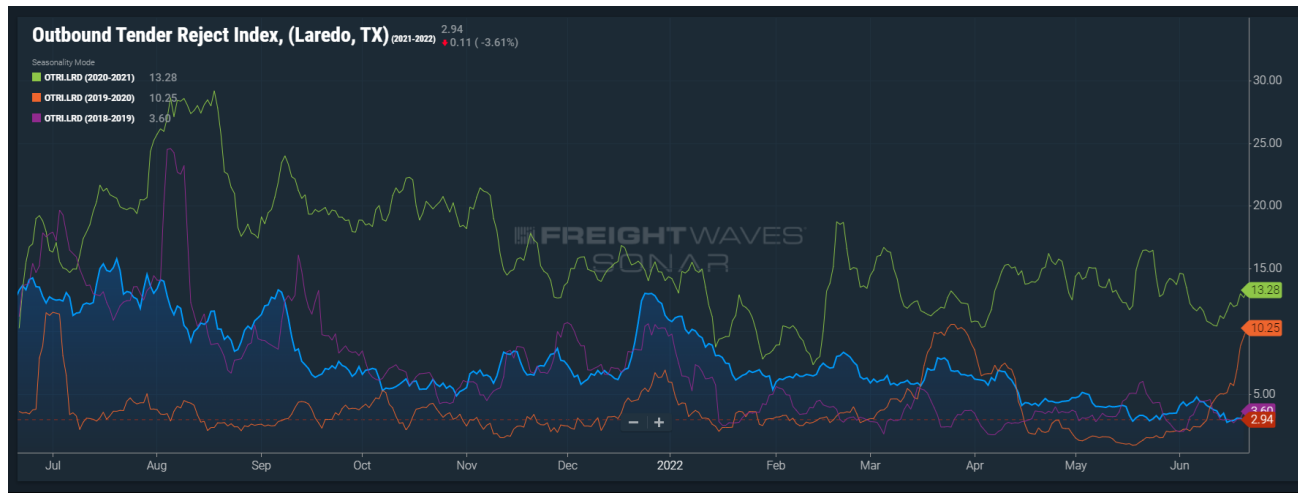
Source: Paul Ratje/Bloomberg News

[Read article](#)

Laredo Outbound Tender Volumes equal to 2020, Rejects continue to fall



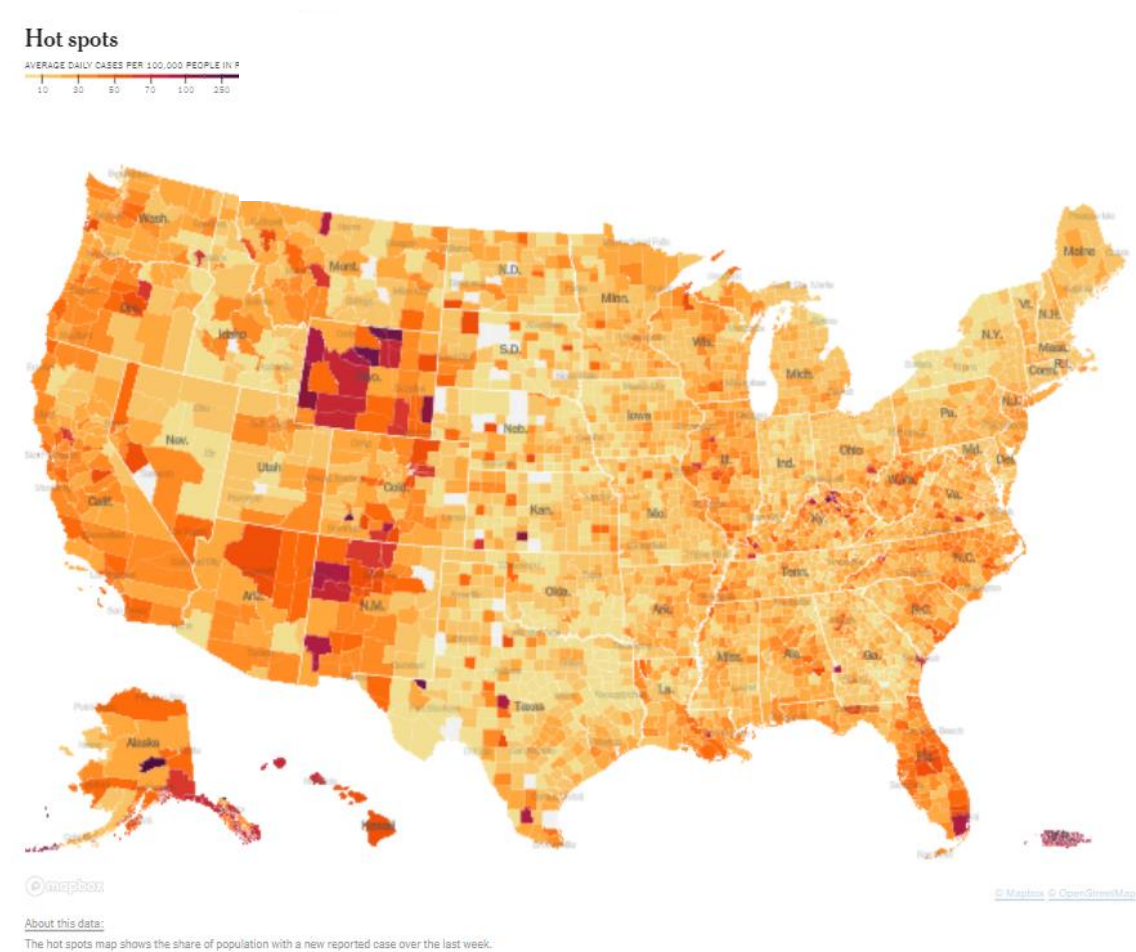
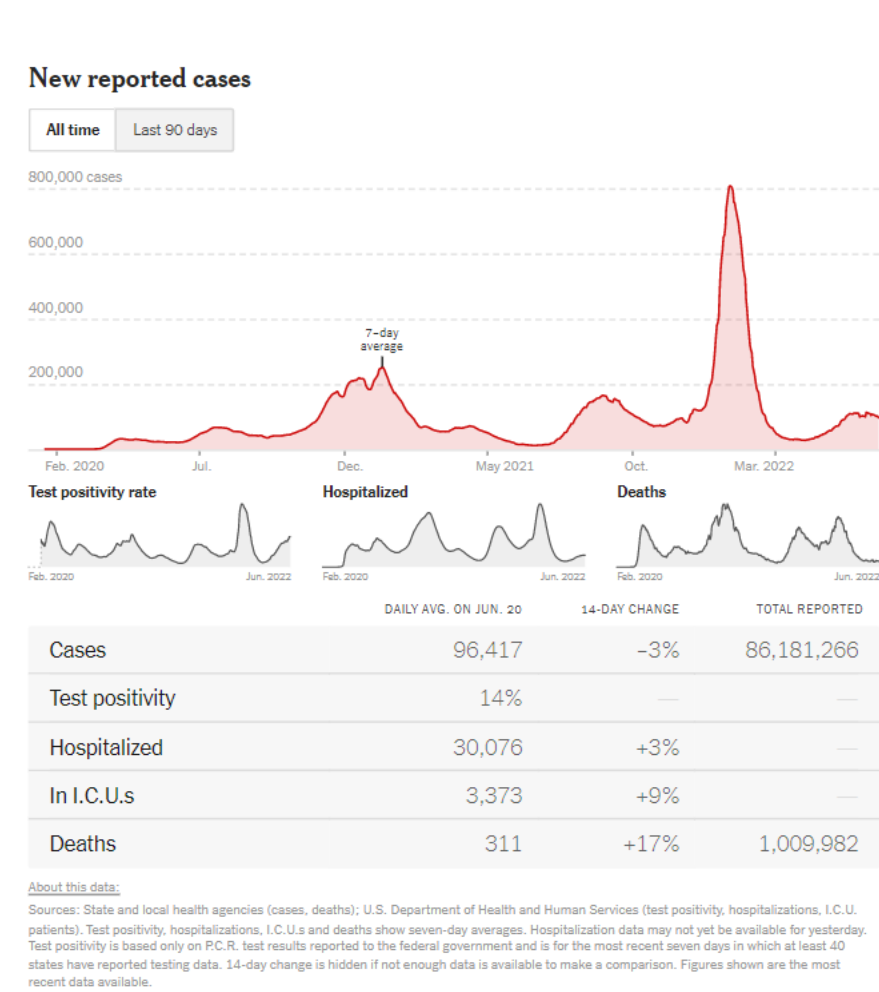
Compared to the Outbound Tender Volume Index levels during this time in the previous years, current OTVI is equal to 2020, -22% lower than 2021 – but 84% higher than 2019.



Outbound Tender Rejects are about -78% lower than they were at the same time last year.

Sources: FreightWaves SONAR; Updated 6/21/2022

COVID-19 down overall, but data shows recent increases in the South and West



Source: [nytimes.com](https://www.nytimes.com); Updated 6/21/22

In a similar trend, COVID-19 continues to ebb and flow in Mexico after restrictions have been loosened

New reported cases



	DAILY AVG. ON JUN. 20	14-DAY CHANGE	TOTAL REPORTED
Cases	7,713	+179%	5,877,837
Deaths	32	+74%	325,417

About this data:

Source: Data for Mexico comes from the [Center for Systems Science and Engineering at Johns Hopkins University](#). Population data from the [National Institute of Statistics, Geography and Informatics](#). Daily cases are the number of new cases reported each day. The seven-day average is the average of a day and the previous six days of data.



Source: [nytimes.com](#); Updated 6/21/2022

Struggling to get the capacity you need? Lacking supply chain visibility? Looking to improve your freight procurement process?



Schneider's supply chain experts are here to help you solve your supply chain challenges beyond U.S. borders.

Learn from our experts where more opportunity exists in your supply chain. Just take this quick survey for your free consultation.

[Get your free consultation](#)

Not sure how you could benefit? [Read this case study](#) to learn how one manufacturer gained reliable, consistent cross-border capacity.



Cross borders as if there are none

[Learn more about Schneider's reliable,
expert Mexico/U.S. cross-border freight shipping solutions.](#)