

A toric lens unlike any other

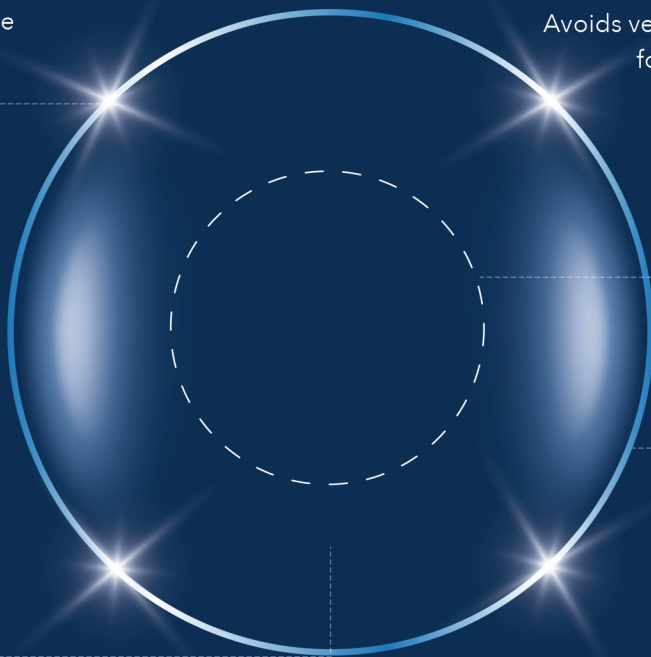
Only ACUVUE® features BLINK STABILIZED® Design.¹

4 stability zones

More resistant to the effects of gravity¹

Prism-free optic zone

Avoids vertical prism disparity challenges for monocular astigmats¹



Minimal lower lid interaction

Helps support patient comfort¹

Horizontal and vertical symmetry

Can't be inserted upside down⁴



Provide your patients with visual acuity as good as glasses and excellent comfort¹

* Vertical heterophoria possibly caused by prism dissociation due to the presence of induced optical prism is a relevant factor for practitioners to consider when fitting toric contact lenses for monocular astigmats or those requiring a mix of toric soft contact lens designs.^{2,3} Clinical studies have not been done to fully characterize the clinical effects of differences in base down prism among different contact lenses.

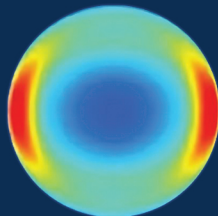
^ Traditional prism and peri-ballast lens designs have a thicker area below lower eyelid than ACUVUE® Brand Contact Lenses for ASTIGMATISM that can cause interaction and may cause unwanted rotation due to lateral movement of the lower lid during blinks.

1. Data on file 2024, ACUVUE® Brand Contact Lenses for ASTIGMATISM overall fitting success, orientation position, rotational stability and vision performance. 2. Jackson D, Bedell HE. Vertical heterophoria and susceptibility to visually induced motion sickness. *Strabismus*. 2012;20(1):17-23. 3. duToit R, Ramke J, Brian G. Tolerance to prism induced by readymade spectacles: setting and using a standard. *Optom Vis Sci*. 2007;84(11):1053-1059. 4. JVV Data on File 2016. Design Enhancements and Resultant Benefits of ACUVUE® OASYS Brand Contact Lenses 1-Day with HydraLuxe® Technology for ASTIGMATISM.

ACUVUE®

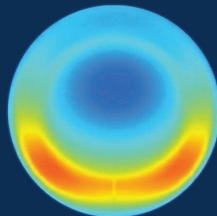
BLINK STABILIZED® DESIGN vs. Ballasted Designs

ACUVUE®



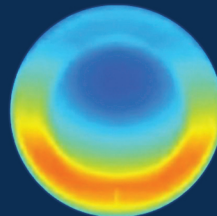
Example of BLINK STABILIZED® Design as measured on ACUVUE® OASYS 1-Day for Astigmatism

Alcon®



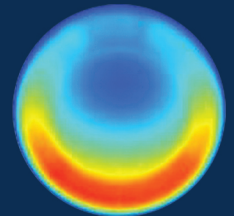
Example of PRECISION BALANCE 8J4™ Lens Design as measured on Precision1® for Astigmatism

CooperVision®



Example of Optimized Toric Lens Geometry™ Design as measured on MyDay® Toric

Bausch & Lomb®



Example of OpticAlign® Design as measured on Ultra® for Astigmatism

	BLINK STABILIZED® Design	Ballasted Designs		
	All ACUVUE® Astigmatism Contact Lenses	Precision1®, Dailies Total1®, AirOptix® & Total30® for Astigmatism	MyDay® & Biofinity® Toric	Infuse® & Ultra® for Astigmatism
More Resistant to Effects of Gravity ¹	✓	✗	✗	✗
Prism-Free Optic Zone ^{*1}	✓	✗	✗	✗
Minimal Lower Lid Interaction ^{^1}	✓	✗	✗	✗
Can't Be Inserted Upside Down ⁴	✓	✗	✗	✗

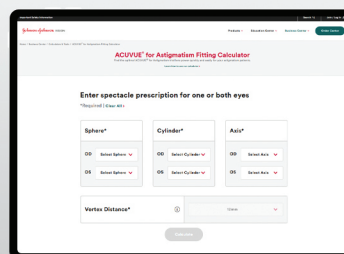
Access digital resources from ACUVUE®



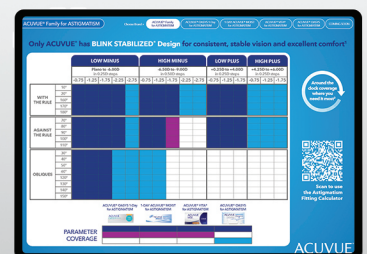
SCAN
FOR DIGITAL
RESOURCES



Vision Simulator for Patients



Fitting Calculator



Parameters

Important Safety Information: ACUVUE® Brand Contact Lenses are indicated for vision correction. As with any contact lens, eye problems, including corneal ulcers, can develop. Some wearers may experience mild irritation, itching or discomfort. Lenses should not be prescribed if patients have any eye infection, or experience eye discomfort, excessive tearing, vision changes, redness or other eye problems. Consult the package insert for complete information. Complete information is also available from Johnson & Johnson Vision Care, Inc., by calling 1-800-843-2020 or by visiting www.jnjvisionpro.com.

Third-party trademarks are the property of their respective owners.

© Johnson & Johnson and its affiliates 2024 | 2024PP13392

ACUVUE®