

THE
SIGNATURE
AT MGM GRAND®

MEETING PLANNER GUIDE

LETTER FROM THE GENERAL MANAGER

Dear Meeting Planner,

Welcome to The Signature at MGM Grand—the non-smoking, non-gaming world-class resort in the heart of the Las Vegas strip. We are proud to provide experienced service that is second to none and delivered by our highly trained, friendly employees who are eager to make your event with us unforgettable. From the moment you enter our private entrance, you'll be greeted by our friendly staff eager to attend to your every need.

Only a few steps away from the energy and excitement of the MGM Grand, The Signature offers 1,576 suites with breathtaking views, all designed to surround you with luxury. So relax, enjoy, and let us show you how service is our Signature.

In preparation for your stay, we have prepared this guide for your review. It includes information on our facilities and outlets that may prove helpful as you plan your meeting.

If you would like to receive additional information, please contact your Executive Meetings Manager, who will be happy to assist.

We look forward to working with you and your group. Together, we will ensure your meeting at The Signature at MGM Grand is a success.

Sincerely,

A handwritten signature in cursive script that reads "Jill Santell".

Jill Santell
General Manager

TABLE OF CONTENTS

Advertising and Promotions	4
Americans with Disabilities Act	4
Amenities	4
ATM	4
Audiovisual	4
Baggage Service - Group	4
Cash Paid-Outs.....	4
Catering.....	4
Certificate of Insurance	5
Check-In/Checkout	5
Concierge	5
Damage to Property	5
Dining	5
Fitness Center and Pools	6
Front Desk.....	6
Gift Cards	6
Guest Suites	7
In-Suite Hospitality	9
MGM Resorts Events.....	9
Meal Vouchers.....	9
Meeting Rooms	9
Parking	9
Pool Policies.....	9
Restaurant Reservations/Group Dining	9
Room Deliveries	9
Shipping and Receiving	10
Signage and Display Advertising.....	10
Telecommunications	10
Transportation	10
Weather	11
Appendix: Diagrams	
Property Map	12
Signature Deluxe Suite	13
Signature Balcony Deluxe Suite	14
Signature One-Bedroom Balcony Suite.....	15
Signature Two-Bedroom Balcony Suite	16

ADVERTISING AND PROMOTIONS

Advertising or promotions utilizing The Signature or MGM Grand name or logo must have prior written approval by your Executive Meetings Manager.

AMERICANS WITH DISABILITIES ACT (ADA)

The Americans with Disabilities Act (ADA) forbids discrimination against individuals with disabilities. In compliance with the ADA, The Signature provides for reasonable accommodations to allow physically challenged individuals to participate in all activities. Accessible sleeping rooms, wheelchairs, TDD kits, and Braille menus are available. Specific facility questions may be directed to your Executive Meetings Manager.

AMENITIES

VIP amenities can be arranged through your Executive Meetings Manager.

ATM

The Signature offers ATM terminals that handle most bank cards nationwide. ATMs are conveniently located in Towers 1 and 2. In addition, the MGM Grand Casino Cage allows for check cashing and also exchanges foreign currency. Proper valid identification required (i.e., passport or U.S. driver's license).

AUDIOVISUAL

The Signature has its own in-house audiovisual department which features state-of-the-art equipment. Subcontracting or providing your own audiovisual equipment is not permitted, unless approved by your Executive Meetings Manager. Wireless Internet is included in all guest rooms and function space.

BAGGAGE SERVICE – GROUP

In the event of a group arrival, a mandatory bellman gratuity will apply. Based on the location of the drop-off and services provided, there will be a \$7.00 per person charge for round-trip luggage handling, subject to change. Group portage must be arranged in advance. Please contact your Executive Meetings Manager to coordinate.

CASH PAID-OUTS

Cash paid-outs may be requested in advance through your Executive Meetings Manager. Paid-outs must be picked up at the MGM Grand Casino Cage and client must present government-issued photo identification.

CATERING

Guaranteed number of attendees for all functions must be received three business days prior to the functions. Group will be charged the guaranteed number of attendees or the actual number of people in attendance, whichever is greater. Meals will be set an overage up to 3% above your guaranteed number.

All food and beverage are subject to a 22% service charge and 8.1% sales tax (subject to change).

CERTIFICATE OF INSURANCE

Certificate of insurance must be received 14 days prior to group arrival and shall name The Signature, its parent company, subsidiaries, and affiliates as additional insureds.

CHECK-IN/CHECKOUT

Guest check-in time is 3:00 p.m. If rooms are requested prior to check-in time, early arrivals will be accommodated as rooms become available.

Checkout time is 11:00 a.m. Our Bell Staff can store luggage on a complimentary basis for those guests who have checked out, but are not yet departing the hotel. In addition, for guest convenience, The Signature offers Express Checkout and Video Checkout options. Express Checkout forms are located in the suite. The Signature also offers video checkout through the television. This service may be accessed from 5:00 a.m. – 1:00 p.m. on the day of checkout. Some restrictions may apply.

CONCIERGE

Whatever your need or desire, the Concierge at The Signature is here to assist. Located in Tower 1 our trained staff is available to make any special arrangements to make your stay that much more enjoyable. To reach the Concierge, please call 702.797.6016 or email signatureconcierge@lv.mgmgrand.com.

DAMAGE TO PROPERTY

Meeting group shall be liable for any damage, normal wear and tear excluded, to the function space or to any other real or personal property of hotel, caused by the act or omission of meeting group, its agents, directors, shareholders, employees, members, attendees, contractors, volunteers, or performers. Meeting group will not, and shall not permit others to, drive nails, tacks, hooks, screws, or other items into any part of the function space, hotel equipment, or property. Meeting group shall return the function space to hotel in as good of condition and repair as the same shall have been found when licensed for meeting group's use.

DINING

STARBUCKS

Offering gourmet coffees, teas, and specialty drinks along with pastries and fruit served daily in Tower 1.

Hours of Operation: 6:00 a.m. – 5:00 p.m. Sunday – Thursday
6:00 a.m. – 7:00 p.m. Friday & Saturday

THE LOUNGE

An intimate gathering place to recount the day's events – or plan the night's – over specialty cocktails or a refreshing glass of wine.

Hours of Operation: 3:00 p.m. – 12:00 a.m. Monday – Thursday
12:00 p.m. – 2:00 a.m. Friday & Saturday
12:00 p.m. – 12:00 a.m. Sunday

DELIGHTS

A gourmet delicatessen located in Tower 2 featuring breakfast and lunch favorites with indoor and outdoor seating available.

Hours of Operation: 7:00 a.m. – 9:00 p.m. Daily

IN-SUITE DINING

With in-suite dining options available anytime you desire, The Signature serves your favorite gourmet selections in the privacy of your own suite. The menu features signature entrées, appetizers, decadent desserts, and a complete bar selection.

Hours of Operation: 5:00 a.m. – 2:00 a.m. Daily

FITNESS CENTER AND POOLS

Take advantage of our state-of-the-art fitness centers for an energizing workout. Each features treadmills, cross-trainers, stair climbers, and stationary bikes—all with personal flat-screen TVs to make your workout more enjoyable. Or use our extensive collection of free weights.

The Signature Fitness Centers are located on the Lobby Level of Tower 1 and Tower 3.

Hours of Operation: 24 Hours

The private heated pools of The Signature offer a refreshing escape. Each Signature tower features its very own heated pool, cabanas, and poolside cocktail service. Hours vary throughout the year.

FRONT DESK

The Front Desk is located in each tower. Please be advised the evening Front Desk hours of operation for Tower 1 and Tower 3 are based on business demands and occupancy levels. Tower 2 remains open 24 hours to provide guests with overnight assistance.

GIFT CARDS

Gift cards may be purchased from the MGM Grand Business Center or in advance through Hotel Cashiering (for groups only). Gift cards are sold in any amount between \$5.00 and \$2,500.00 and may be used at any MGM Resorts-owned outlet, restaurant, or show. Gift cards may not be exchanged for cash and are not valid for gaming purposes, advanced reservations, or bar tabs.

GUEST SUITES

SIGNATURE DELUXE SUITE

Step inside your 550-square-foot suite and immerse yourself in elegance. Enjoy a dedicated sitting area with state-of-the-art entertainment technology, full kitchenette, king-sized bed with upscale linens, and a rejuvenating whirlpool spa tub.

Your Deluxe Suite experience includes:

- Spacious bedroom with exquisite king-size bed
- 300-thread-count cotton sheets and upscale linens
- Complete kitchenette with Sub-Zero, Miele, and Bosch appliances
- Separate sitting area with entertainment center and high-definition flat-screen TV
- Whirlpool spa tub and separate shower
- Oversized marble/granite bathroom with dual sink vanities
- In-suite coffee/tea makers
- CD/DVD players and iHome clock radio
- Wireless Internet

SIGNATURE BALCONY DELUXE SUITE

Our 550-square-foot Signature Balcony Deluxe Suite has gorgeous views from the private balcony, providing a unique, inspiring Vegas experience. Enjoy a dedicated sitting area with state-of-the-art entertainment technology, full kitchenette, king-sized bed with upscale linens, and a rejuvenating whirlpool spa tub.

Your Balcony Deluxe Suite experience includes:

- Spacious bedroom with exquisite king-size bed
- Balcony with views
- 300-thread-count cotton sheets and upscale linens
- Complete kitchenette with Sub-Zero, Miele, and Bosch appliances
- Separate sitting area with entertainment center and high-definition flat-screen TV
- Whirlpool spa tub and separate shower
- Oversized marble/granite bathroom with dual sink vanities
- In-suite coffee/tea makers
- CD/DVD players and iHome clock radio
- Wireless Internet

SIGNATURE ONE-BEDROOM BALCONY SUITE

Escape to your 950-square-foot suite and experience sweeping balcony views, a full separate sitting area with the latest in entertainment technology, full kitchen, and an oversized marble bathroom with a private whirlpool spa tub and separate shower.

Your Balcony Suite experience includes:

- Master bedroom with deluxe king-size bed and floor-to-ceiling windows
- Balconies with view
- 300-thread-count cotton sheets and upscale linens
- Two luxurious bathrooms
- Whirlpool spa tub and separate shower
- Spacious living room with entertainment center and high-definition flat-screen TV
- Full kitchen with Sub-Zero, Miele, and Bosch appliances
- In-suite coffee/tea makers
- CD/DVD players and iHome clock radio
- Wireless Internet

SIGNATURE TWO-BEDROOM BALCONY SUITE

At 1,500 square feet of luxury, it's the ultimate place for any celebration. This suite includes two separate bedrooms, each accompanied by its own bathroom complete with a luxurious whirlpool spa tub and separate shower. A private balcony with dramatic views provides the perfect backdrop, and the separate sitting area, spacious living room, state-of-the-art entertainment center, and full kitchen create the ideal escape.

Your Two-Bedroom Suite experience includes:

- Two large bedrooms (one with a separate sitting area)
- Balconies with view
- 300-thread-count cotton sheets and upscale linens
- Two master bathrooms and one guest bathroom
- Whirlpool spa tubs
- Spacious living room with entertainment center and high-definition flat-screen TV
- Full kitchen with Sub-Zero, Miele, and Bosch appliances
- In-suite coffee/tea makers
- CD/DVD players and iHome clock radio
- Wireless Internet

To book this suite type, please call 877.727.0007.

IN-SUITE HOSPITALITY

Celebrate a special event or holiday occasion in style by arranging in-suite hospitality. Whether hosting family and friends or planning a business gathering you can choose from a variety of prearranged menus to suit your needs.

MGM RESORTS EVENTS

MGM Resorts Events offers award-winning full-service event decorating and entertainment services regardless of the size of your event. From creative wall treatments, floral, and linens to custom-designed props and signage, a personal Event Manager will assist in creating your custom look.

MEAL VOUCHERS

Vouchers for Delights, Starbucks, and In-Suite Dining are available for advance purchase. Meal vouchers are nonrefundable and nontransferable. Please contact your Executive Meeting Manager for further details.

MEETING ROOMS

The Signature offers exceptionally flexible meeting space that can be configured for any kind of business function. State-of-the-art audiovisuals allow for a seamless integration of computer, video, and audio equipment. We offer two state-of-the-art boardrooms that accommodate 10 to 14 guests and four elegant meeting rooms accommodating 15 to 80 guests. Each meeting room provides direct access to outdoor patio space.

PARKING

Valet parking is available through the main entrance of The Signature. In late spring/early summer of 2016, a paid parking program will be implemented. Limited parking is available for oversized vehicles.

Please note there is no on-site self-parking available at The Signature.

POOL POLICIES

There are specific guidelines for use of any areas surrounding the pool, including start times, minimum and maximum attendance in specific areas, as well as rental fees, labor/lighting costs, and food and beverage minimums. Additional information can be provided by your Executive Meetings Manager.

RESTAURANT RESERVATIONS/GROUP DINING

Individual restaurant reservations are strongly suggested for specialty restaurants and can be made up to 60 days in advance by calling our Concierge staff at 702.797.6016.

For groups of 15 or more, MGM restaurant reservations may be made up to 120 days in advance. Treat your group to exquisite four-star dining at one of the fine restaurants located just moments away at the MGM Grand. Contact a hospitality coordinator to cater your executive or conference dinner party at 702.891.7433. Preset menus are required along with a signed contract and deposit.

ROOM DELIVERIES

All deliveries are placed inside guest suites and will be charged \$3.00 per item (\$0.50 each additional item) per person. Items will not be delivered prior to arrival.

SHIPPING AND RECEIVING

Shipments to the MGM Grand more than five (5) days in advance of the arrival date will not be accepted. Shipments that require special handling should be coordinated with your Executive Meetings Manager prior to shipping. Collect or COD shipments will not be accepted.

The current handling fee for each box sent to or from the hotel as follows:

Letters and Packages

0 – 15 lbs.....	\$7.00
16 – 30 lbs.....	\$14.00
31 – 50 lbs.....	\$21.00
51 – 75 lbs.....	\$26.00
76 – 99 lbs.....	\$40.00
Over 100 lbs. and Pallets.....	Total Weight x \$ 0.70

Charges are subject to change.

Please address any packages shipped to the hotel as follows:

The Signature at MGM Grand

145 E. Harmon Ave.

Las Vegas, NV 89109

Attn: Guest Name/Group Name/Group Dates

SIGNAGE AND DISPLAY ADVERTISING

The Signature is pleased to offer electronic reader boards directly outside of your meeting room. In an effort to support the integrity of the public areas, we cannot allow for any signage to be displayed outside of the function space. Meeting group, its agents, contractors, and employees, may not affix signage to any wall located on the hotel property.

TELECOMMUNICATIONS

Single-line phones, conference phones, and fax lines are available through our MGM Grand Telecommunication Department. Please contact your Executive Meetings Manager for pricing.

TRANSPORTATION

Shuttle service runs from McCarran Airport continuously from 8:00 a.m. – 12:00 a.m. daily. Requests for shuttle service from The Signature to McCarran would require advanced notice.

Taxis are available at the porte cochère in each tower. The fare for a taxi from the airport to The Signature is approximately \$12.00 – \$15.00.

The Las Vegas Monorail Station is located in the MGM Grand District.

Hours of Operation: 7:00 a.m. – 2:00 a.m. (Monday – Thursday)

7:00 a.m. – 3:00 a.m. (Friday – Sunday)

WEATHER

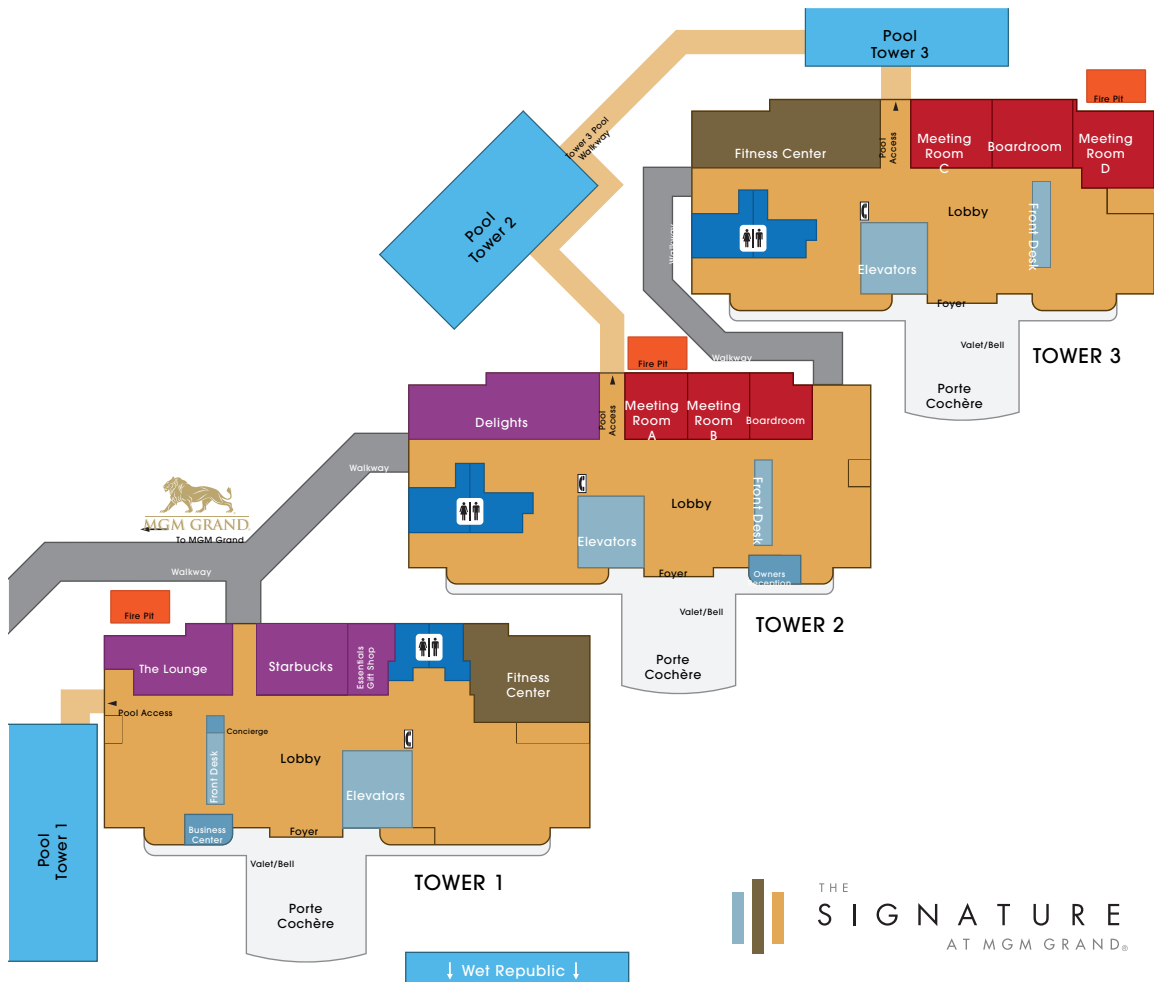
Average temperature: 71.7 degrees F (19 degrees C).

Average yearly rainfall: 4.13 inches (10.64 centimeters).

Average daily humidity: 29 percent, 211.5 clear days annually, 82.4 partly cloudy days, and 71.3 cloudy days.

MONTH	HIGH	LOW	PRECIPITATION
January	57° F	34° F	.48"
February	63° F	39° F	.48"
March	69° F	44° F	.42"
April	78° F	51° F	.21"
May	88° F	60° F	.28"
June	100° F	69° F	.12"
July	106° F	76° F	.35"
August	103° F	74° F	.49"
September	95° F	62° F	.28"
October	82° F	54° F	.21"
November	67° F	43° F	.43"
December	58° F	34° F	.38"
Annual	80.5° F	53.7° F	4.13"

** All figures subject to change.**



THE
SIGNATURE
AT MGM GRANDSM

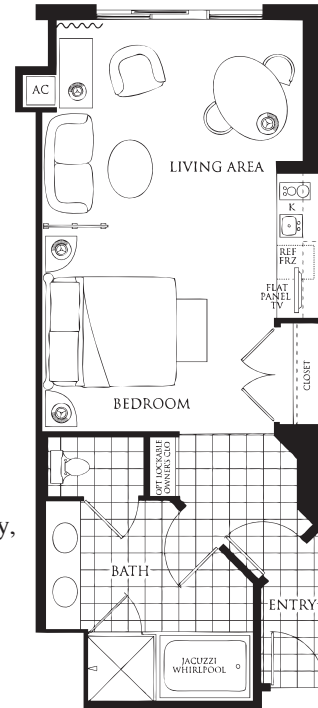
SIGNATURE DELUXE SUITE



Step inside your 550-square-foot suite and immerse yourself in elegance. Enjoy a dedicated sitting area with state-of-the-art entertainment technology, full kitchenette, king-sized bed with upscale linens, and a rejuvenating whirlpool spa tub.

Your Deluxe Suite experience includes:

- Spacious bedroom with exquisite king-size bed
- 300-thread-count cotton sheets and upscale linens
- Complete kitchenette with Sub-Zero, Miele, and Bosch appliances
- Separate sitting area with entertainment center and high-definition flat-screen TV
- Whirlpool spa tub and separate shower
- Oversized marble/granite bathroom with dual sink vanities
- In-suite coffee/tea makers
- CD/DVD players and iHome clock radio
- Wireless Internet



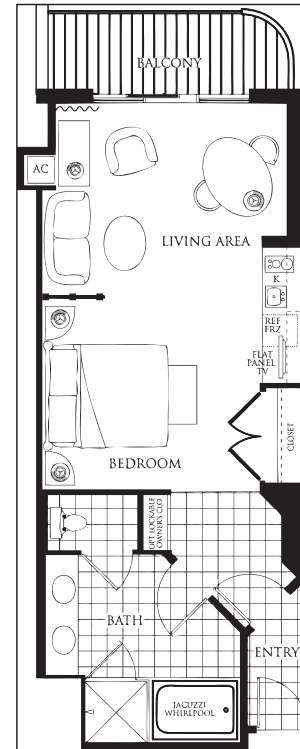
SIGNATURE BALCONY DELUXE SUITE



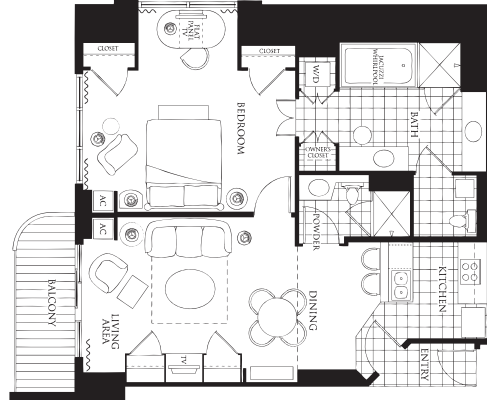
Our 550-square-foot Signature Balcony Deluxe Suite has gorgeous views from the private balcony, providing a unique, inspiring Vegas experience. Enjoy a dedicated sitting area with state-of-the-art entertainment technology, full kitchenette, king-sized bed with upscale linens, and a rejuvenating whirlpool spa tub.

Your Balcony Deluxe Suite experience includes:

- Spacious bedroom with exquisite king-size bed
- Balcony with views
- 300-thread-count cotton sheets and upscale linens
- Complete kitchenette with Sub-Zero, Miele, and Bosch appliances
- Separate sitting area with entertainment center and high-definition flat-screen TV
- Whirlpool spa tub and separate shower
- Oversized marble/granite bathroom with dual sink vanities
- In-suite coffee/tea makers
- CD/DVD players and iHome clock radio
- Wireless Internet



SIGNATURE ONE-BEDROOM BALCONY SUITE

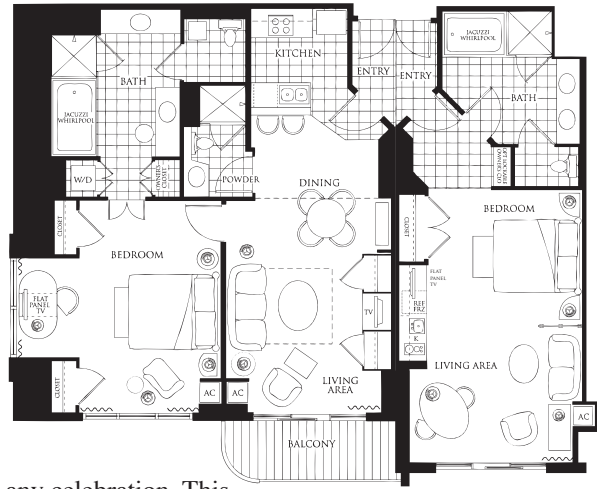


Escape to your 950-square-foot suite and experience sweeping balcony views, a full separate sitting area with the latest in entertainment technology, full kitchen, and an oversized marble bathroom with a private whirlpool spa tub and separate shower.

Your balcony suite experience includes:

- Master bedroom with deluxe king bed and floor-to-ceiling windows
- Balconies with view
- 300-thread-count cotton sheets and upscale linens
- Two luxurious bathrooms
- Whirlpool spa tub and separate shower
- Spacious living room with entertainment center and high-definition flat-screen TV
- Full kitchen with Sub-Zero, Miele, and Bosch appliances
- In-suite coffee/tea makers
- CD/DVD players and iHome clock radio
- Wireless Internet

SIGNATURE TWO-BEDROOM BALCONY SUITE



At 1,500 square feet of luxury, it's the ultimate place for any celebration. This suite includes two separate bedrooms, each accompanied by its own bathroom complete with a luxurious whirlpool spa tub and separate shower. A private balcony with dramatic views provides the perfect backdrop, and the separate sitting area, spacious living room, state-of-the-art entertainment center, and full kitchen create the ideal escape.

Your two-bedroom suite experience includes:

- Two large bedrooms (one with a separate sitting area)
- Balconies with view
- 300-thread-count cotton sheets and upscale linens
- Two master bathrooms and one guest bathroom
- Whirlpool spa tubs
- Spacious living room with entertainment center and high-definition flat-screen TV
- Full kitchen with Sub-Zero, Miele, and Bosch appliances
- In-suite coffee/tea makers
- CD/DVD players and iHome clock radio
- Wireless Internet