



# Cataracts can limit you, pick a lens that won't.

## Bring on the Night with InteliLight™

Cataract treatment powered by InteliLight™ means clear vision day and night, so you can do more of what you love.<sup>1-3</sup>

**Made Possible.**

*Johnson & Johnson* VISION

TECNIS  
**Symphony™**  
OptiBlue™ IOL  
Powered by InteliLight™

TECNIS  
**Symphony™**  
OptiBlue™ IOL  
Toric II  
Powered by InteliLight™

Powered by  
**InteliLight™**

About TECNIS Symphony™ OptiBlue™ and TECNIS Symphony™ Toric II OptiBlue™ IOL Physicians considering use of the TECNIS Symphony™ OptiBlue™ and TECNIS Symphony™ Toric II OptiBlue™ IOLs should refer to the Directions for Use labeling for a complete list of indications and safety information. See reverse for continued Indications and Important Safety Information.

## What is a cataract?

Cataracts form as we age and are caused by a buildup of the eye's natural protein. The increase in protein causes a cloudiness in the lens of the eye, which is why people with cataracts may experience blurry or dull vision.<sup>10</sup>

## Do you have presbyopia?

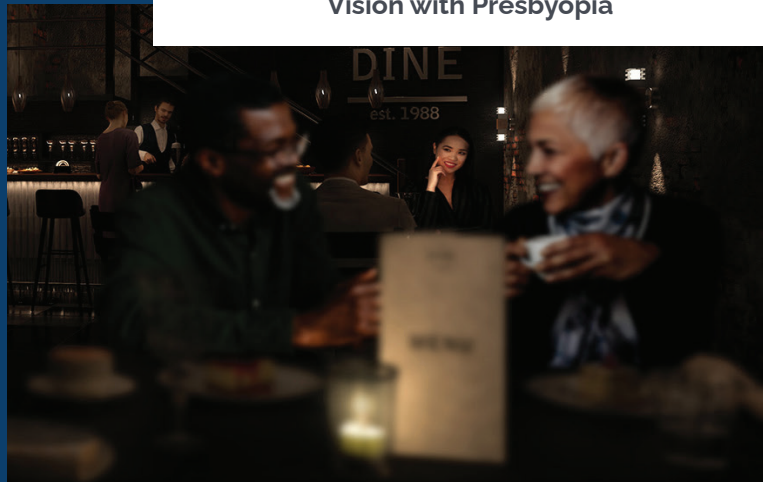
Presbyopia typically occurs around age 40 and is an age-related loss of the eyes' ability to see objects up close.<sup>8</sup> Cataract treatment is an opportunity to correct presbyopia<sup>13-7</sup> at the time of surgery, with a lens like **TECNIS Symphony™ OptiBlue™ IOL**, which offers a continuous range of vision, from up close to far away, day and night.

## Do you have astigmatism?

Astigmatism is when the shape of your eye is more oblong than circular, which can create distorted vision. With **TECNIS Symphony™ OptiBlue™ IOL** astigmatism can be corrected during cataract surgery resulting in less need for glasses.<sup>11</sup> Talk to your doctor about your astigmatism correction options.

## TECNIS Symphony™ OptiBlue™ IOL A Presbyopia-Correcting Lens

Vision with Presbyopia



Vision with TECNIS Symphony™ OptiBlue™ IOL



Images are an illustrative simulation and do not represent actual data derived from studies.

# Do more of what you love, day and night

Cataract surgery is your opportunity to improve your vision from cloudy or blurry to crisp and clear.

At Johnson & Johnson Vision, we believe that clear vision shouldn't be limited to daylight and we strive to improve quality of life after cataract surgery, both day and night.

Think about walking downstairs in dim light, or seeing objects in the road when driving at night. These activities can be troublesome, which is why we developed InteliLight.™





“

I have more time for the activities I love,  
with the people I love.

## Bring on the Night with IntelliLight™

Contrast sensitivity is your ability to recognize an object against its background. It is important, especially in low light, because it allows you to see things like furniture in the dark, objects while driving at night, or even a curb at the end of the sidewalk when walking in the evening.

IntelliLight™ lens technology is the solution and offers the best contrast sensitivity and low light vision<sup>◊</sup>, to help you see clearly day and night, even in dim light.<sup>2,3,5,6</sup>



# Vision at every distance, quality of life even in low light

TECNIS Symphony™ OptiBlue™ IOL is a premium lens known for providing an extended range of continuous vision, which means you will have the ability to see from up close to far away, day and night.<sup>2</sup>

This lens is powered by our IntelliLight™ technology, so that you can see clearly in dim or low light.<sup>3-7</sup>

Learn more at:

[www.tecnisvisionsimulator.com](http://www.tecnisvisionsimulator.com)



## Confidence in any light



Fewer visual disturbances  
when driving at night.<sup>5</sup>



Freedom to do more  
after sunset.<sup>†9</sup>



Reduction in the risk of falls.<sup>2,3,5,6,11,12</sup>



## INDICATIONS AND IMPORTANT SAFETY INFORMATION FOR TECNIS SYMPHONY™ OPTIBLUE™ AND TECNIS SYMPHONY™ TORIC II OPTIBLUE™ EXTENDED RANGE OF VISION IOLS WITH TECNIS SIMPLICITY™ DELIVERY SYSTEM

**CAUTION:** Federal law restricts this device to sale and use by or on the order of a physician.

**INDICATIONS FOR USE:** The TECNIS Simplicity™ Delivery System is used to fold and assist in inserting the TECNIS Symphony™ OptiBlue™ Extended Range of Vision IOL, Model DXR00V, which is indicated for primary implantation for the visual correction of aphakia in adult patients with less than 1 diopter of pre-existing corneal astigmatism, in whom a cataractous lens has been removed.

The TECNIS Simplicity™ Delivery System is used to fold and assist in inserting The TECNIS Symphony™ Toric II OptiBlue™ Extended Range of Vision IOLs, Models DXW150, DXW225, DXW300, DXW375, which are indicated for primary implantation for the visual correction of aphakia and for reduction of residual refractive astigmatism in adult patients with greater than or equal to 1 diopter of preoperative corneal astigmatism, in whom a cataractous lens has been removed. These models of IOLs, DXR00V, DXW150, DXW225, DXW300, DXW375, mitigate the effects of presbyopia by providing an extended depth of focus.

Compared to an aspheric monofocal IOL, these models of IOLs provide improved intermediate and near visual acuity, while maintaining comparable distance visual acuity. These models of IOLs are intended for capsular bag placement only.

**CONTRAINDICATIONS:** None.

**RISKS:** Routine cataract surgery risks, irrespective of lens selection, could be minor, temporary, or affect patients' vision permanently. Rare complications include worsening of vision, bleeding, or infection. Risks related to use of this lens include a slight loss in vision sharpness. Even with glasses, loss of sharpness may worsen under poor visibility conditions such as dim light or fog. This may lead to driving difficulties and not detecting road hazards as quickly at night or in fog. Patients may also notice halos, starbursts, glare, and other visual symptoms. This may impact patients when there are bright lights at night. Patients should discuss all risks and benefits with their eye doctor before surgery.

**WARNINGS:** A small number of patients may want their TECNIS Symphony™ OptiBlue™ IOL removed because of lens-related optical/visual symptoms. Patients with pre-existing diseases or conditions (i.e., diabetes and heart disease) may have higher risk of experiencing complications (e.g., more difficult recovery) after routine cataract surgery. Patients should not receive this lens if they have had previous trauma to their eye. The lens has not been evaluated for use in children.

**PRECAUTIONS:** If a patient's eye is unhealthy, vision may not improve following cataract surgery in cases where other ocular conditions are present (e.g., glaucoma); patients may not get the full benefit of the TECNIS Symphony™ OptiBlue™ IOL. Before surgery, the eye doctor will check for any eye diseases. After surgery, patients should take all prescribed medicines and apply eye drops as instructed to avoid inflammation and infection. During recovery, patients should avoid bending down and playing sports, which can harm the eye. The eye doctor will tell patients what activities to avoid. Patients' vision with the IOL may be limited when performing detailed 'up-close' work without glasses, and rarely, may make some types of retinal treatment (e.g., retinal tear repair) more difficult.

\* vs. AcrySof® IQ PanOptix®, TECNIS Symphony™, TECNIS® Multifocal. Based on comparison of DFU defocus curves and head to head clinical study vs. PanOptix®.

\*\*\* Individual results will vary. Some TECNIS Synergy™ patients may require spectacles post-surgery.

† Continuous 20/32 or better.

‡ Based on 6-months post-operative data.

◆ vs. AcrySof® ReSTOR® +2.5 D and AcrySof® IQ Vivity®.

## REFERENCES:

1. DOF2020CT4011: DOF\_Effect of blocking violet light on light scatter in Tecnis Symphony™ IOLs (v1.0).
2. Data on file. DOF2020OTH4010 Johnson & Johnson Vision, Inc. Santa Ana, CA.
3. Data on file. Johnson & Johnson Surgical Vision, Inc. DOF2019OTH4002 - Weeber H. MTF of the TECNIS Synergy™ OptiBlue® IOL, and other lens models. 27 Mar 2019.
4. DFU, TECNIS SYMPHONY™ OptiBlue® IOL Z311558, RevA.
5. Data on file. DOF2020OTH4011 Johnson & Johnson Vision, Inc. Santa Ana, Calif.
6. Data on file. DOF2015CT0020 Johnson & Johnson Vision, Inc. Santa Ana, Calif.
7. TECNIS Synergy™ IOL with TECNIS Simplicity® Delivery System DFU, Z311421E.
8. Presbyopia. American Optometric Association Website: <https://www.aoa.org/patients-and-public/eye-and-vision-problems/glossary-of-eye-and-vision-conditions/presbyopia>.
9. Data on File, Johnson & Johnson Surgical Vision, Inc. DOF2020CT4015- Forte 1: A Comparative Clinical Evaluation of a New TECNIS® Presbyopia Correcting Intraocular Lens Against a PanOptix® Intraocular Lens- SPECTACLE WEAR AND SATISFACTION RESULTS.
10. National Eye Institute. Cataracts. <https://www.nei.nih.gov/learn-about-eye-health/eye-conditions-and-diseases...> Accessed May 24, 2022.
11. Rosenthal B, Fischer M. (2014) Functional vision changes in the normal and aging eye. In TL Kauffman (Ed.) Geriatric Rehabilitation Manual (2nd Ed, Chpt 51, pg 381-391). China: Elsevier Ltd.
12. Marks R. Falls among the elderly and vision: A Narrative Review. Open Med J 2014;1:54-65.