


TECNIS  
Symfony™  
OptiBlue™ IOL

Also available in  
TECNIS™ Toric II



## Confidence in any light.

Cataract treatment with  
**TECNIS Symfony™ OptiBlue™**  
means clear vision day and night, so  
you can do more of what you love.<sup>1-3</sup>

Johnson & Johnson

## Cataracts naturally form as our eyes age.

Everyday tasks like reading, driving, and recognizing faces become more difficult. But the good news is that cataract surgery is one of the safest and most common procedures performed worldwide—offering an effective way to restore vision.<sup>4</sup>

At the time of cataract surgery, you have the opportunity to enhance vision with the **TECNIS Symfony™ OptiBlue™** lens. Speak to your doctor about the lens\* options that are right for you.

### The process:\*

- ① **Remove the clouded lens.**  
Your cataract is carefully removed through a tiny incision.
- ② **Insert the new lens.**  
Your surgeon replaces your original lens with the **TECNIS Symfony™ OptiBlue™** lens.
- ③ **Enjoy revitalized vision.**  
Experience continuous vision, day and night.\*

\*Results may vary. Consult your doctor to determine the lens options that are right for you.

## Proven results you can trust

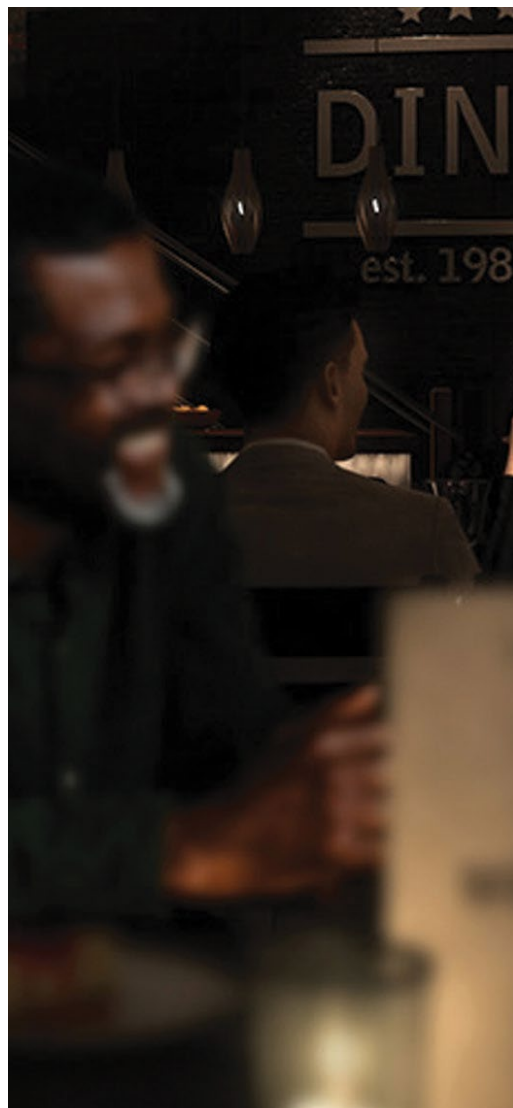
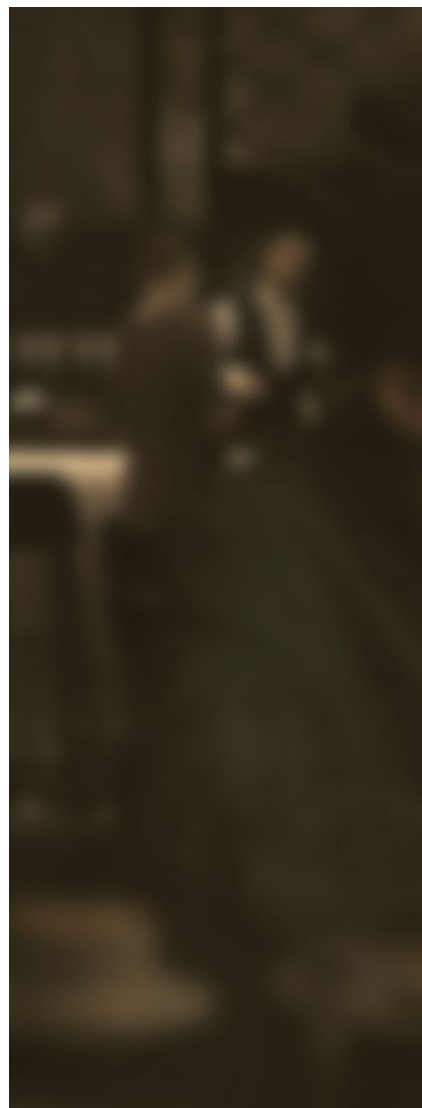
**TECNIS™** lenses, by **Johnson & Johnson**, are backed by 20 years of innovation. Every year, millions of patients worldwide receive **TECNIS™** lenses for their cataract surgery.<sup>5</sup>



Learn more about  
**TECNIS Symfony™** at  
[ClearVisionForYou.com](http://ClearVisionForYou.com)

“Symfony™ OptiBlue™ has  
overall improved every  
aspect of the hobbies  
that I do, the personal life  
I lead, the work that I do”

—*Marshall*



**Cataracts**  
Cloudy

**Monofocal Lens**  
Distance only

*Images are an illustrative simulation and do not represent actual data derived from studies. Individual results may vary.*



Experience seamless vision  
after cataract surgery with  
**TECNIS Symphony™ OptiBlue™**

## Confidence in any light, with **TECNIS Symphony™ OptiBlue™**

High quality of life demands high quality of vision. Choose a lens that addresses more than just your cataract—restoring sight with a continuous range of high-quality vision.



**Fewer visual  
disturbances when  
driving at night<sup>†6</sup>**



**Freedom to do more  
after sunset<sup>‡7</sup>**



**Wide range of  
uninterrupted vision<sup>8</sup>**

<sup>†</sup> A multicenter, randomized clinical study comparing visual and patient-reported outcomes of a violet light-filtering (VLF) vs a non-VLF monofocal IOL at 1 year post-op.

<sup>‡</sup> Based on 6-months post-operative data.

**INDICATIONS AND IMPORTANT SAFETY INFORMATION FOR  
TECNIS SYMFONY™ OPTIBLUE™ AND TECNIS SYMFONY™  
TORIC II OPTIBLUE™ EXTENDED RANGE OF VISION IOLS  
WITH TECNIS SIMPLICITY® DELIVERY SYSTEM**

**CAUTION:** Federal law restricts this device to sale and use by or on the order of a physician. **INDICATIONS FOR USE:** The TECNIS SIMPLICITY™ Delivery System is used to fold and assist in inserting the TECNIS Symphony™ OptiBlue™ Extended Range of Vision IOL, Model DXR00V, which is indicated for primary implantation for the visual correction of aphakia in adult patients with less than 1 diopter of pre-existing corneal astigmatism, in whom a cataractous lens has been removed. The TECNIS SIMPLICITY™ Delivery System is used to fold and assist in inserting The TECNIS Symphony™ Toric II OptiBlue™ Extended Range of Vision IOLs, Models DXW150, DXW225, DXW300, DXW375, which are indicated for primary implantation for the visual correction of aphakia and for reduction of residual refractive astigmatism in adult patients with greater than or equal to 1 diopter of preoperative corneal astigmatism, in whom a cataractous lens has been removed. These models of IOLs, DXR00V, DXW150, DXW225, DXW300, DXW375, mitigate the effects of presbyopia by providing an extended depth of focus. Compared to an aspheric monofocal IOL, these models of IOLs provide improved intermediate and near visual acuity, while maintaining comparable distance visual acuity. These models of IOLs are intended for capsular bag placement only. **CONTRAINDICATIONS:** None. **RISKS:** Routine cataract surgery risks, irrespective of lens selection, could be minor, temporary, or affect patients' vision permanently. Rare complications include worsening of vision, bleeding, or infection. Risks related to use of this lens include a slight loss in vision sharpness. Even with glasses, loss of sharpness may worsen under poor visibility conditions such as dim light or fog. This may lead to driving difficulties and not detecting road hazards as quickly at night or in fog. Patients may also notice halos, starbursts, glare, and other visual symptoms. This may impact patients when there are bright lights at night. Patients should discuss all risks and benefits with their eye doctor before surgery. **WARNINGS:** A small number of patients may want their TECNIS Symphony™ OptiBlue™ IOL removed because of lens-related optical/visual symptoms. Patients with pre-existing diseases or conditions (i.e., diabetes and heart disease) may have higher risk of experiencing complications (e.g., more difficult recovery) after routine cataract surgery. Patients should not receive this lens if they have had previous trauma to their eye. The lens has not been evaluated for use in children. **PRECAUTIONS:** If a patient's eye is unhealthy, vision may not improve following cataract surgery in cases where other ocular conditions are present (e.g., glaucoma); patients may not get the full benefit of the TECNIS Symphony™ OptiBlue™ IOL. Before surgery, the eye doctor will check for any eye diseases. After surgery, patients should take all prescribed medicines and apply eye drops as instructed to avoid inflammation and infection. During recovery, patients should avoid bending down and playing sports, which can harm the eye. The eye doctor will tell patients what activities to avoid. Patients' vision with the IOL may be limited when performing detailed 'up-close' work without glasses, and rarely, may make some types of retinal treatment (e.g., retinal tear repair) more difficult.

**References:** 1. DOF2020CT4011: DOF.Effect of blocking violet light on light scatter in TECNIS Symphony™ IOLs (v1.0). 2. Data on file. DOF2020OTH4010 Johnson & Johnson Vision, Inc. Santa Ana, CA. 3. Data on file. Johnson & Johnson Surgical Vision, Inc. DOF2019OTH4002 - Weeber H. MTF of the TECNIS Synergy™ OptiBlue™ IOL, and other lens models. 27 Mar 2019. 4. Chen, X., Xu, J., Chen, X., & Yao, K. (2021). Cataract: Advances in surgery and whether surgery remains the only treatment in future. 2024REF6176 5. 2024 Market Scope IOL Market Report. 2024REF6182 6. Data on file. DOF2020OTH4005 7. Data on File, Johnson & Johnson Surgical Vision, Inc. DOF2020CT4015- Forte 1: A Comparative Clinical Evaluation of a New TECNIS™ Presbyopia Correcting Intraocular Lens Against a PanOptix® Intraocular Lens- SPECTACLE WEAR AND SATISFACTION RESULTS. 8. Data on file. DOF2020OTH4004, Johnson & Johnson Vision, Inc. Santa Ana, Calif

© Johnson & Johnson and its affiliates 2024. Third party trademarks are the property of their respective owners.  
2024PP19378