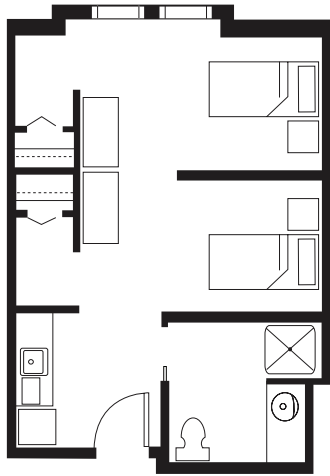
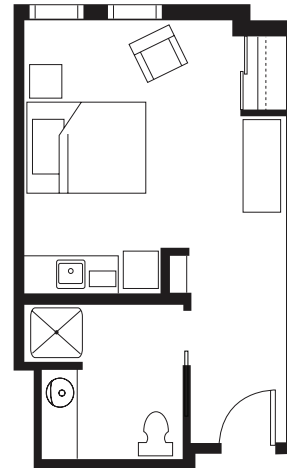


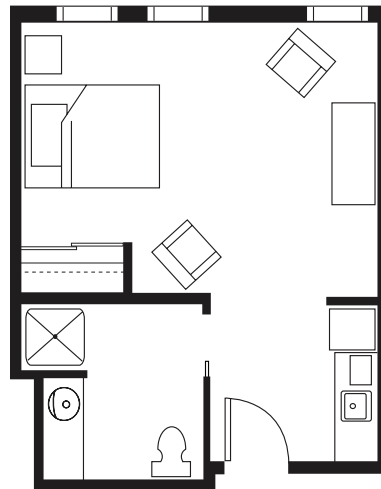
## ASSISTED LIVING | SUITES



**COMPANION**  
SEMI-PRIVATE  
371 OR 417 SQ FT



**STUDIO**  
336 SQ FT



**STUDIO DELUXE**  
373 - 489 SQ FT

*All square footage is approximate & subject to availability.*



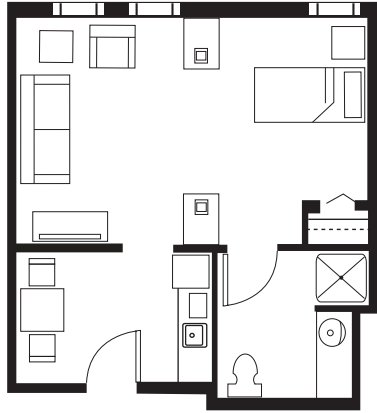
# B

## BRANDYWINE

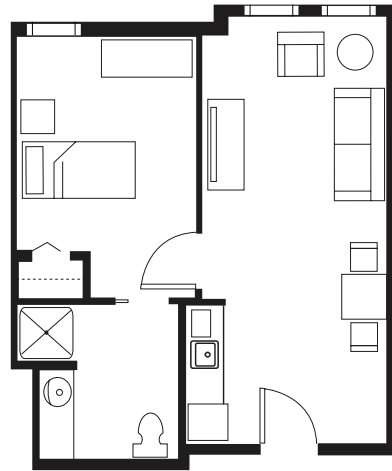
UPPER PROVIDENCE  
PERSONAL CARE AND MEMORY CARE

1133 BLACK ROCK ROAD  
PHOENIXVILLE, PA 19460  
610.933.3250  
WWW.RUI.NET

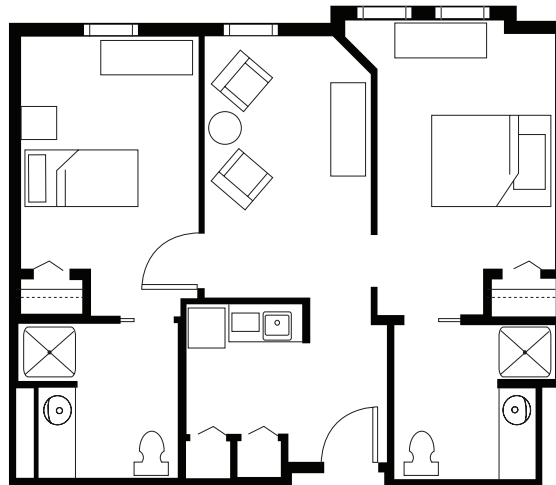
## ASSISTED LIVING | SUITES



**ONE BEDROOM**  
353-465 SQ FT



**ONE BEDROOM DELUXE**  
353-465 SQ FT



**TWO BEDROOM**  
705 - 757 SQ FT

*All square footage is approximate & subject to availability.*



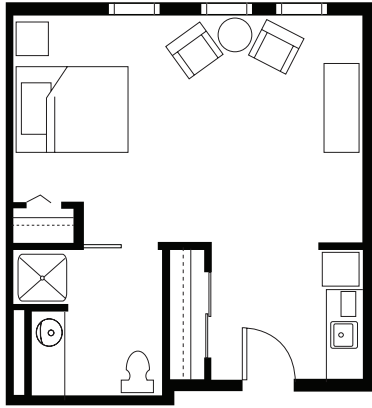
# B

## BRANDYWINE

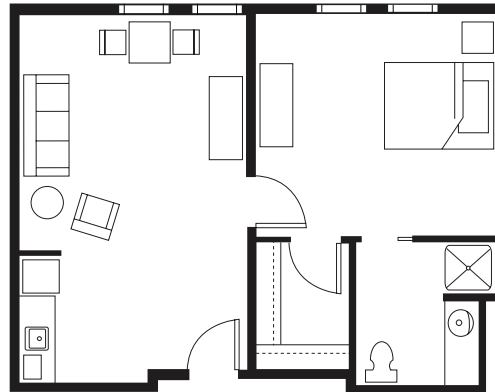
UPPER PROVIDENCE  
PERSONAL CARE AND MEMORY CARE

1133 BLACK ROCK ROAD  
PHOENIXVILLE, PA 19460  
610.933.3250  
WWW.RUI.NET

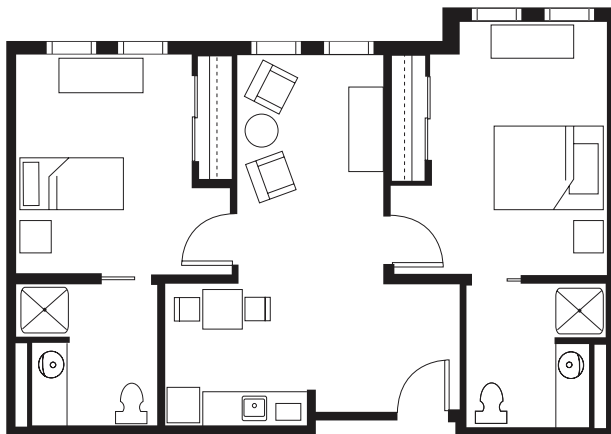
## SERENADE | SUITES



**STUDIO**  
389 OR 437 SQ FT



**ONE BEDROOM**  
621 SQ FT



**TWO BEDROOM**  
785 SQ FT

*All square footage is approximate & subject to availability.*



# B

## BRANDYWINE

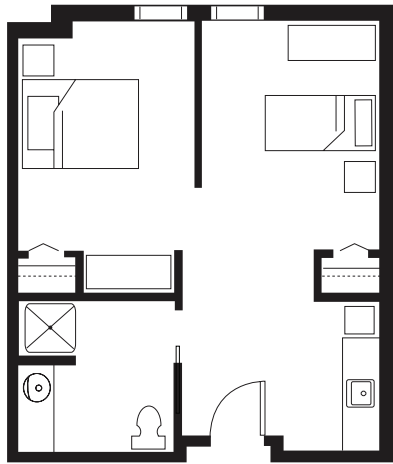
UPPER PROVIDENCE  
PERSONAL CARE AND MEMORY CARE

1133 BLACK ROCK ROAD  
PHOENIXVILLE, PA 19460

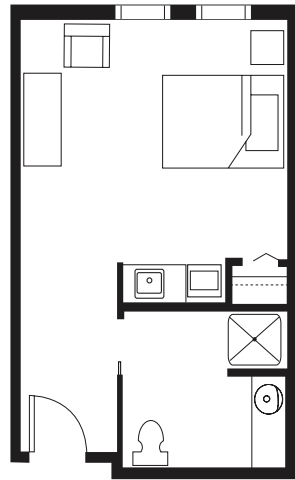
610.933.3250  
WWW.RUI.NET



## MEMORY CARE | SUITES



**COMPANION**  
SEMI-PRIVATE  
489 SQ FT



**STUDIO**  
344 SQ FT

# B

## BRANDYWINE

UPPER PROVIDENCE  
PERSONAL CARE AND MEMORY CARE

1133 BLACK ROCK ROAD  
PHOENIXVILLE, PA 19460  
610.933.3250  
WWW.RUI.NET



*All square footage is approximate & subject to availability.*