

PARIS 2024 medals

Array of pictures representative of the production

22/05/2024



J. L. P.



Introduction

The medals have been struck to our highest quality standards. They have passed all checks and are therefore considered acceptable. Despite all the care taken by our craftsmen, "imperfections" may result from our manufacturing techniques, reflecting the artisanal nature of these products.

The complexity of the production process for this medal, involving more than thirty stages, may accentuate this effect. Moreover, the effects of light make photographing medals a delicate exercise and can sometimes exacerbate certain "imperfections".

Medal control method

To ensure a high level of quality, all the medals are checked at the various stages of production. In addition, a quality manager carries out an eye inspection of each medal before it is packaged. This operation is carried out at arm's length and for about 5 seconds per side in a natural lighting environment. If the eye is not attracted by a defect after 5 seconds, the medal is considered to be in conformity.

This quality control method is more rigorous than our standard methods.

Advice on handling and storage

To preserve the brilliance of your medals, here are a few recommendations:

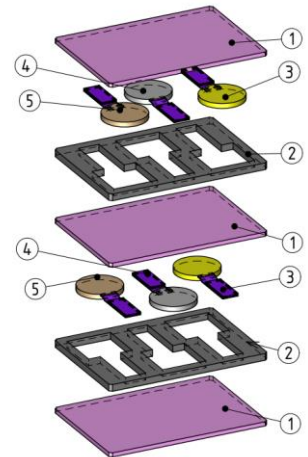
- Handle with nitrile gloves



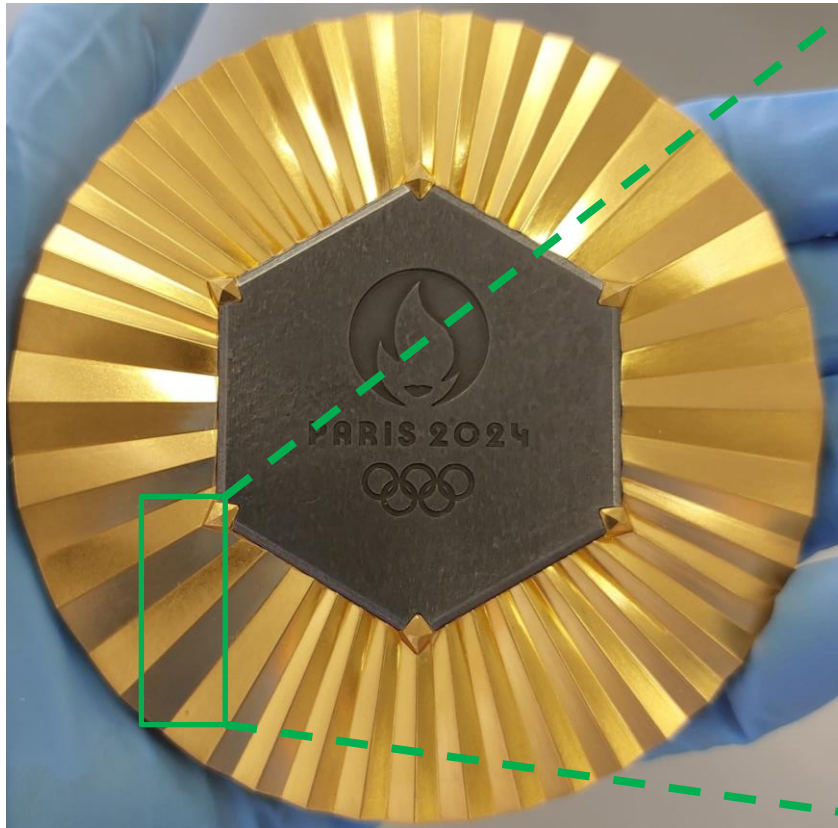
- Avoid frictions and impacts:

- Only if necessary, clean it by lightly wiping it with a soft cloth and without cleaning product
- Handle the medals one by one and unpack them layer by layer (see graphic)
- During the control, please place the medals on one of the cardboard sheet shown in purple on the graphic

- When storing them, please protect them from direct light and humidity and avoid temperature shocks
- After controlling them, please put back the medals in their original packaging, with the plastic sleeve and anti-moisture bags



Obverse of the medals – Acceptable imperfections

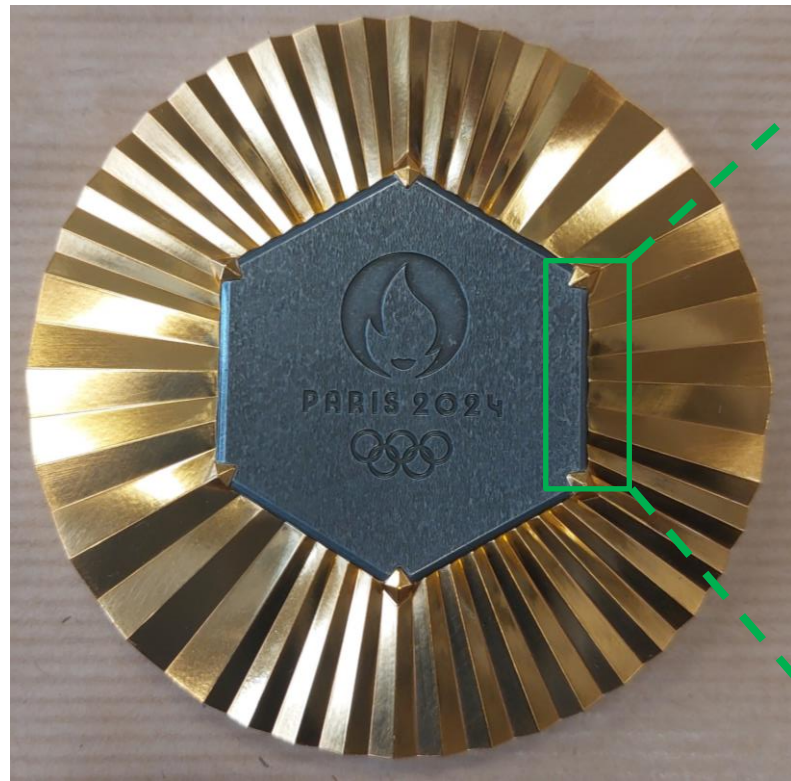


Slight spot on the medal

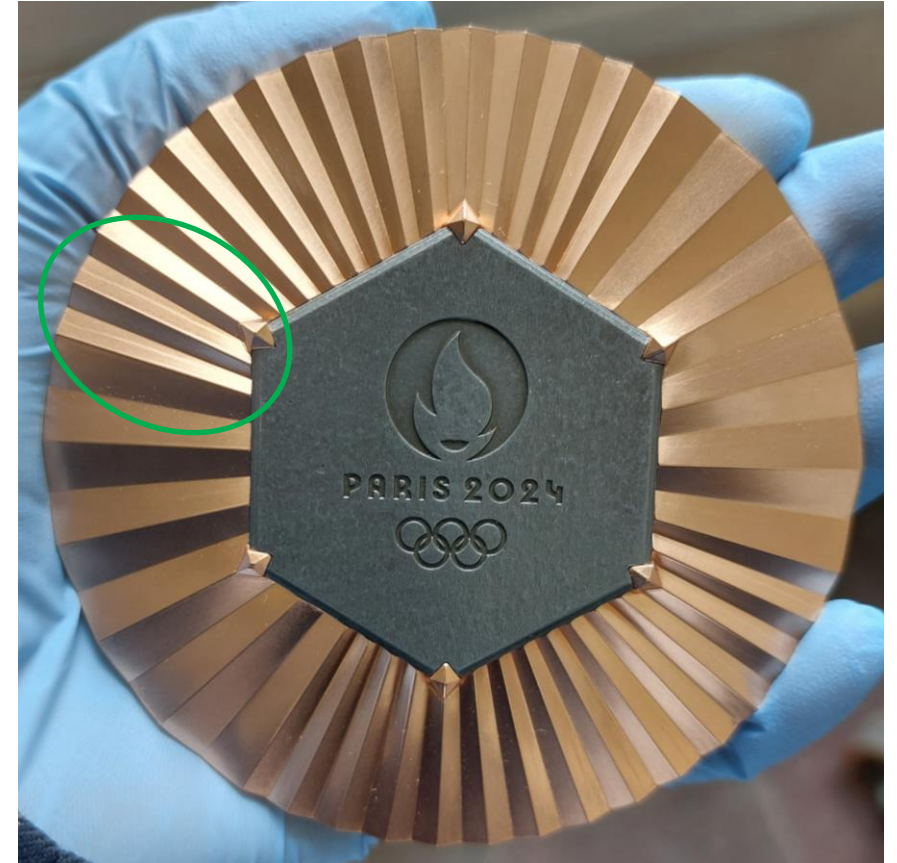
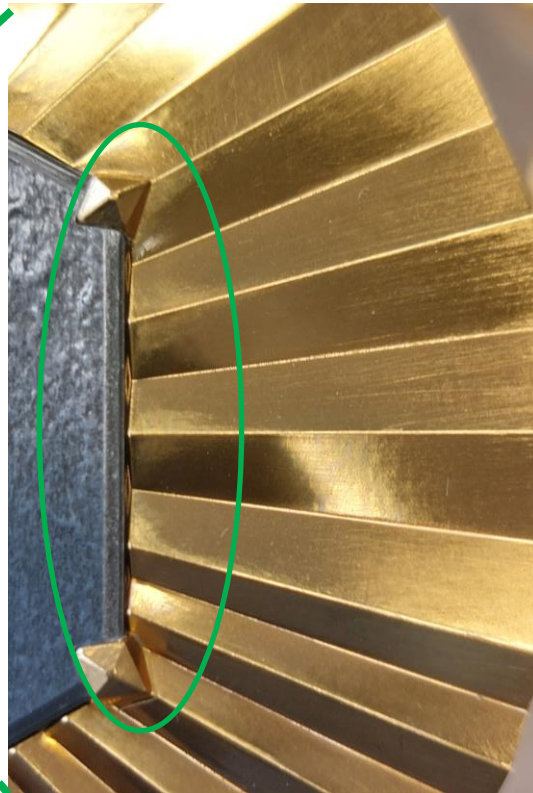


Traces resulting from the brush

Obverse of the medals – Acceptable imperfections

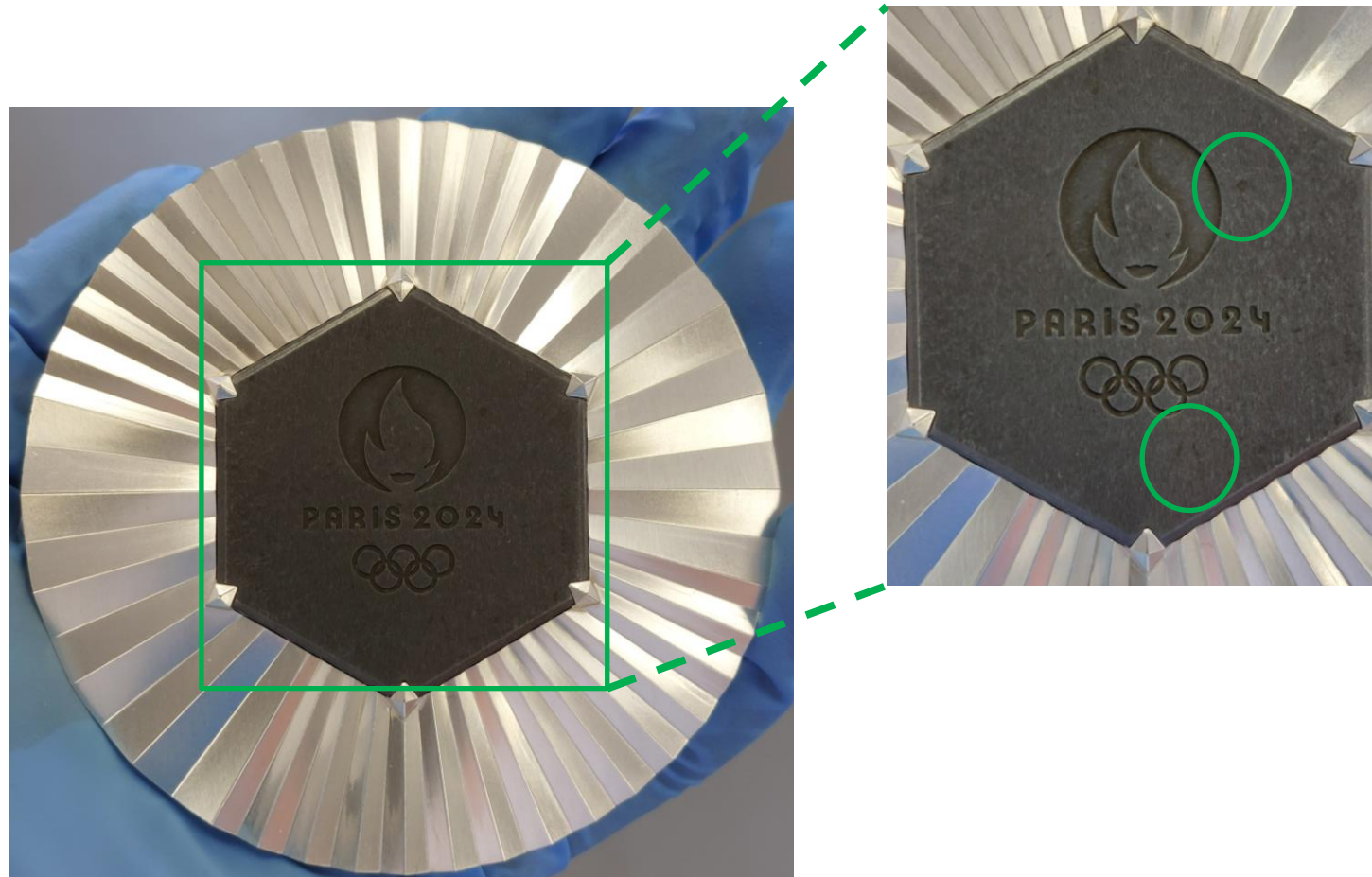


Light white veil close to the insert due to the radiant shape



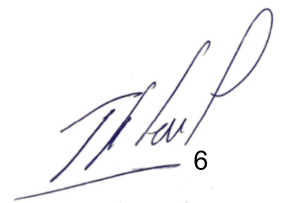
Light halo close to the rays due to the varnish process

Metal Insert – Acceptable imperfections



Slight variations of natural tones

MONNAIE DE PARIS



6

Reverse of the medals – Acceptable imperfections

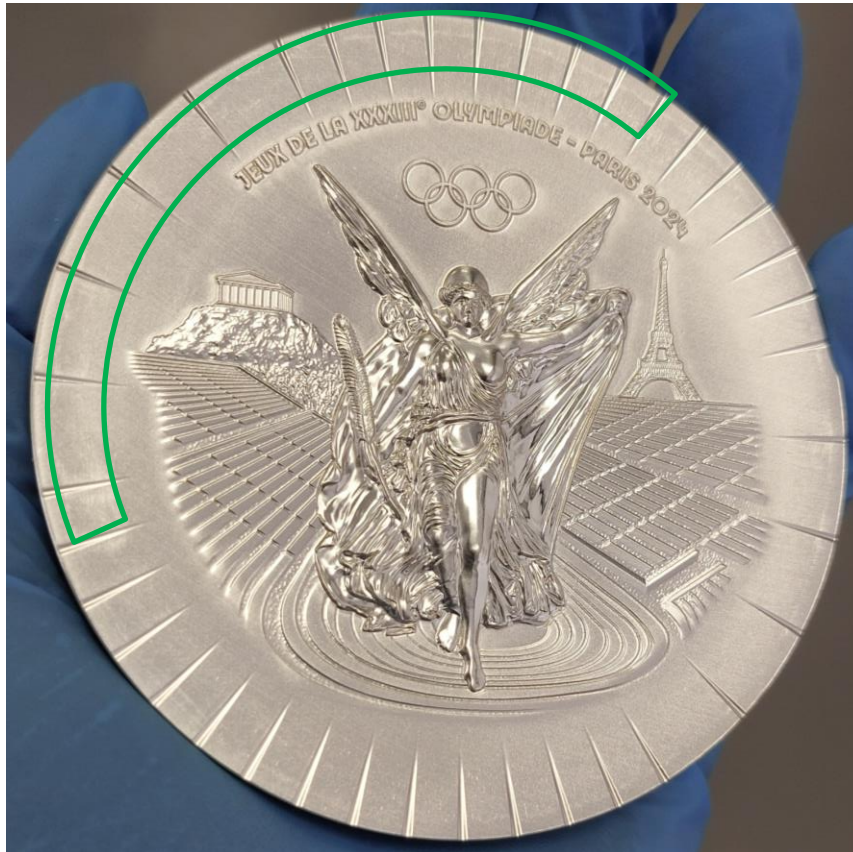


Light halo close to the head of the goddess due to the varnish process



Traces resulting from the brush

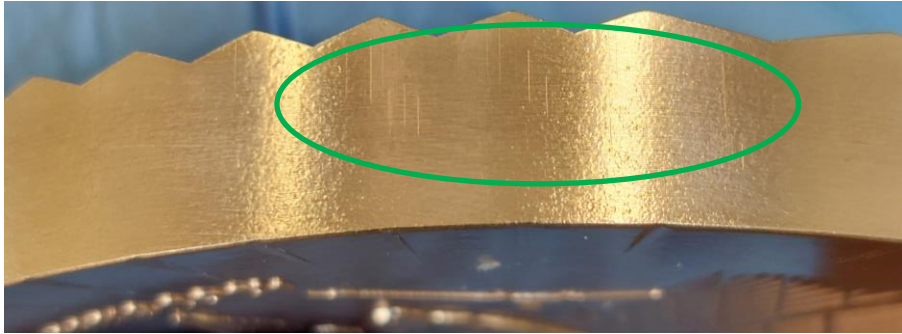
Reverse of the medals – Acceptable imperfections



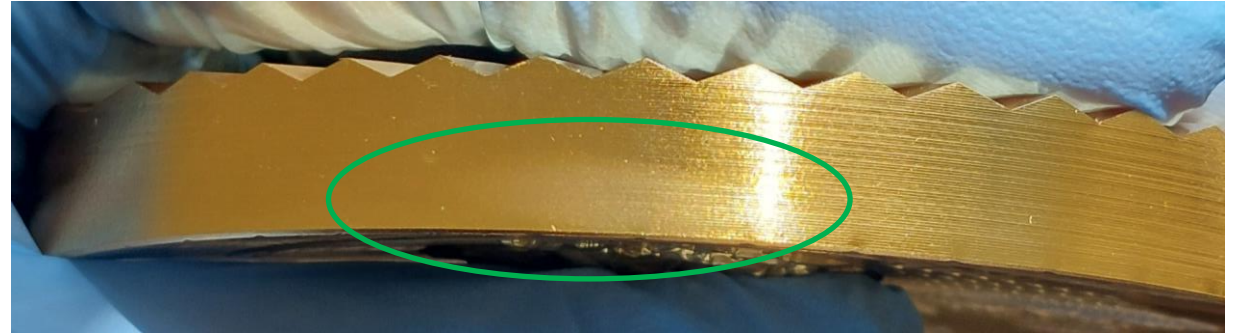
Metal creep during the strike

Metal creep is a natural phenomenon linked to the movement of the metal, the shape of the medal and the type of engraving. It is more prevalent in the Silver and Gold grades and cannot be avoided or controlled.

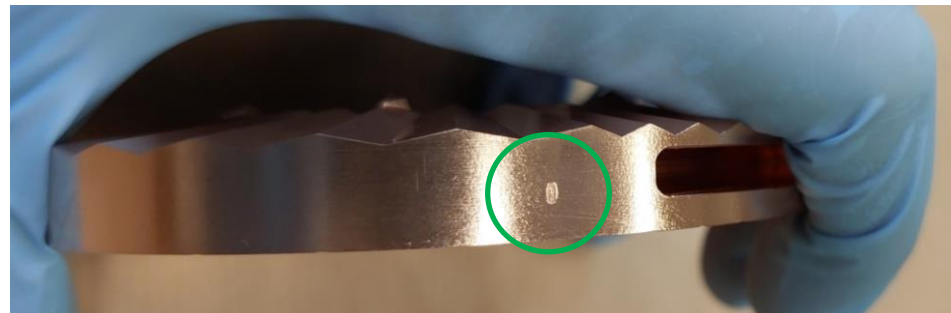
Edge of the medal – Acceptable imperfections



Marks on the edge caused by friction between the part and the stamping tools



Slight white halo on the edge due to friction between the part and the stamping tools



Hallmark at 10 mm from groove

Edge of the medal – Acceptable imperfections



Small engraving « bavure »

Medal ribbon – Acceptable imperfections



Small threads sticking out of the seam