



SOUTHERN CONFERENCE SOFTBALL

2023



702 North Pine Street, Spartanburg, SC 29303 • 864-591-5100 • Fax: 864-591-3448

Ralan Wardlaw, Assistant Director of Media Relations (SB contact)

facebook.com/SouthernConference • twitter.com/SoConSports • instagram.com/SouthernConference

2023 SOUTHERN CONFERENCE SOFTBALL STANDINGS

	Conference					Overall					
	W-L	Pct.	H	A	ST	W-L	Pct.	H	A	N	ST
Furman	6-2	.750	2-0	4-2	W2	16-22	.421	7-4	8-11	1-7	W4
Samford	6-3	.667	5-1	1-2	L1	17-23	.425	10-8	3-9	4-6	L2
UNCG	3-2	.600	3-0	0-2	L2	24-16	.600	16-7	4-7	4-2	L1
Mercer	3-3	.500	3-0	0-3	W3	12-26	.316	5-8	1-13	6-5	L1
Western Carolina	3-6	.333	2-4	1-2	L1	13-19	.406	4-5	6-11	3-3	L3
ETSU	3-6	.333	2-1	1-5	W1	10-27	.270	6-5	2-14	2-8	L2
Chattanooga	2-4	.333	2-1	0-3	W1	19-17	.528	7-5	2-9	10-3	W1

UPCOMING SCHEDULE (ALL TIMES EASTERN)

April 15 (Saturday)

Samford at UNCG, 1 p.m. *
Mercer at Furman, 1 p.m. *
Chattanooga at ETSU, 1 p.m. *
Samford at UNCG, 3 p.m. *
Mercer at Furman, 3 p.m.
Chattanooga at ETSU, 3 p.m. *

April 16 (Sunday)

Samford at UNCG, 1 p.m. *
Mercer at Furman, 1 p.m. *
Chattanooga at ETSU, 1 p.m. *

April 18 (Tuesday)

App State at Western Carolina, 4 p.m.
ETSU at Tennessee Tech, 4 p.m.
ETSU at Tennessee Tech, 6 p.m.

April 19 (Wednesday)

Queens at Furman, 4 p.m.
Mercer at Georgia Southern, 4 p.m.
Chattanooga at Austin Peay, 5 p.m.
UNCG at No. 7 Duke, 5 p.m.
Mercer at Georgia Southern, 6 p.m.
Queens at Furman, 6 p.m.
UAB at Samford, 6 p.m.

SoCon PLAYER OF THE WEEK (4/10)

Alex Rose Molinar, SS, Jr., Furman

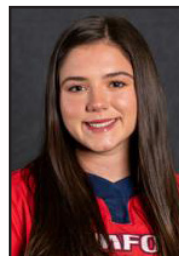
Furman's Molinar batted .571, had an on-base percentage of .700 and slugged 1.143 in three games last week as the Paladins dropped a game at Clemson and swept UNCG in a doubleheader. After drawing a walk in a 4-1 setback against fourth-ranked Clemson on Wednesday, the junior from San Diego, California, went 2-for-2 with a home run, a walk and two runs scored in the first game of the team's doubleheader with the Spartans the next day. The Paladins won game one, 5-4, in nine innings. In game two, the shortstop was 2-for-3 with a double, a walk, two RBIs and two runs scored in a 9-8 victory, with Molinar scoring the winning run off a triple by teammate Chrissy Fleming in the bottom of the seventh inning, moving Furman into first place in the conference standings.



SoCon PITCHER OF THE WEEK (4/10)

Jordyn Partain, So., Samford

Samford's Partain threw her third complete game of the season in her lone appearance last week. The Macon, Georgia, native allowed just three hits and one unearned run, while striking out two batters as the Bulldogs defeated ETSU, 5-1, in the second game of the two teams' doubleheader on Thursday. The sophomore's complete-game win was her second of conference play as she also threw a complete game and got a win against Mercer on March 25.



NOTES

• The fourth week of conference play gets underway on Saturday. The weekend is highlighted by UNCG and Samford, the top two teams from a season ago, facing off in Greensboro.

• Furman enters the weekend on a four-game winning streak after defeating UNCG and College of Charleston in doubleheaders. The Paladins look to increase their lead in the standings at home this weekend versus Mercer.

• UNCG will face an ACC team for the fourth time this season on Wednesday when the Spartans travel to seventh-ranked Duke.

• Furman shortstop Alex Rose Molinar had a big week for the Paladins en route to being named the SoCon player of the week. Molinar was the third Paladin to be named player of the week this season.

• Samford's Jordyn Partain had her best outing of the season against ETSU last week and was named SoCon pitcher of the week for her efforts.

• Furman's Riley Ludlam won SoCon player of the month for March. Ludlam, who also got the honor in February, is the only player in the league that has a batting average over .400.

• Chattanooga right-hander Alyssa Lavdis was named SoCon pitcher of the month for March. Lavdis was 3-0 in the month with a 2.37 ERA.

• Western Carolina infielder Bailey Huneycutt is the conference's active leader in home runs (42) and RBIs (130).

ACTIVE SoCON CAREER LEADERS

BATTING AVERAGE [Minimum 250 AB]
 .358 - Rebeca Laudino; Mercer, 2022-pr.

ON-BASE PCT [Minimum 250 AB]
 .479 - Delaney Cumbie; UNCG, 2019-pr.

SLUGGING PCT [Minimum 250 AB]
 .613 - Bailey Huneycutt; Western Carolina, 2019-pr.

AT BATS
 643 - Emily Coltharp ; Chattanooga, 2019-pr.

RUNS SCORED
 171 - Delaney Cumbie; UNCG, 2019-pr.

HITS
 222 - Emily Coltharp ; Chattanooga, 2019-pr.

RUNS BATTED IN
 130 - Bailey Huneycutt; Western Carolina, 2019-pr.

DOUBLES
 41 - Delaney Cumbie; UNCG, 2019-pr.

TRIPLES
 4 - Olivia Lipari; Chattanooga, 2022-pr.
 4 - Emily Coltharp; Chattanooga, 2019-pr.
 4 - Brooklynn Maxwell; UNCG, 2021-pr.

HOME RUNS
 42 - Bailey Huneycutt; Western Carolina, 2019-pr.

TOTAL BASES
 342 - Bailey Huneycutt; Western Carolina, 2019-pr.

WALKS
 159 - Delaney Cumbie; UNCG, 2019-pr.

STOLEN BASES
 61 - Emily Coltharp ; Chattanooga, 2019-pr.

STOLEN BASE PCT [Minimum 50 steal attempts]
 .859 - Emily Coltharp ; Chattanooga, 2019-pr.

EARNED RUN AVERAGE [Minimum 200 IP]
 1.91 - McKenzie Newcomb, Samford, 2022-pr.

WINS
 30 - McKenzie Newcomb, Samford, 2022-pr.

SAVES
 4 - Brooke Parrott, Chattanooga, 2021-pr.

OPPONENT BATTING AVERAGE [Minimum 200 IP]
 .226 - Brooke Parrott, Chattanooga, 2021-pr.

APPEARANCES
 87 - Sierra Tufts, Furman, 2021-pr.

GAMES STARTED
 74 - Sierra Tufts, Furman, 2021-pr.

COMPLETE GAMES
 34 - Jayme Eilers, Western Carolina, 2020-pr.

SHUTOUTS
 8 - McKenzie Newcomb, Samford, 2022-pr.

INNINGS PITCHED
 416.1 - Sierra Tufts, Furman, 2021-pr.

STRIKEOUTS
 301 - McKenzie Newcomb, Samford, 2022-pr.

STRIKEOUTS PER 7 INNINGS [Minimum 200 IP]
 7.02 - Jayme Eilers (300 so, 299.1 ip, Western Carolina, 2020-pr.

WALKS PER 7 INNINGS [Minimum 200 IP]
 0.94 - McKenzie Newcomb (43 bb, 319.0 ip, Samford, 2022-pr.

HITS ALLOWED PER 7 INNINGS [Minimum 200 IP]
 5.75 - Brooke Parrott (250 h, 304.1 ip), Chattanooga, 2021-pr.

SoCON PLAYERS OF THE WEEK

Feb. 13 Delaney Cumbie, 5th, C, UNCG
 Feb. 20Riley Ludlam, Sr., C, Furman
 Feb. 27 Sara Muir, So., P/1B, ETSU
 March 6 Delaney Cumbie, 5th, C, UNCG
 March 13 ..Brooklynn Brewington, Sr., OF, Western Carolina
 March 20Kaili Phillips, Jr., INF, Chattanooga
 March 27Hannah Poole, Jr., 2B, Furman
 April 3 Bailey Huneycutt, 5th, INF, Western Carolina
 April 10 Alex Rose Molinar, SS, Jr., Furman
 April 17
 April 24
 May 1
 May 8.....

SoCON PITCHERS OF THE WEEK

Feb. 13Tessa Juett, So., Western Carolina
 Feb. 20Maddie Spell, R-So., UNCG
 Feb. 27 McKenzie Newcomb, So., Samford
 March 6 Alyssa Lavdis, So., Chattanooga
 March 13Peja Goold, Fr., Chattanooga
 March 20 Rhyann Jones, Fr., UNCG
 March 27 McKenzie Newcomb, So., Samford
 April 3 Maddie Spell, R-So., UNCG
 April 10Jordyn Partain, So., Samford
 April 17
 April 24
 May 1
 May 8.....

SoCON PLAYERS OF THE MONTH

February.....Riley Ludlam, Sr., C, Furman
 March.....Riley Ludlam, Sr., C, Furman
 April.....
 May.....

SoCON PITCHERS OF THE MONTH

February..... McKenzie Newcomb, So., Samford
 March.....Alyssa Lavdis, So., Chattanooga
 April.....
 May.....

SoCON COACHING RECORDS

Coach, school	Career (yrs.)	School (yrs.)	SoCon (yrs.)
Cheryl Milligan, ETSU (int.)	550-235 (19th)	10-27 (1st)	3-6 (1st)
Stacey Johnson-Whitfield, Furman	38-55 (2nd)	Same	14-12 (2nd)
Lindsay Fico, Mercer	98-124 (5th)	24-60 (2nd)	10-14 (2nd)
Janelle Breneman, UNCG	478-448-3 (20th)	347-211 (11th)	107-63 (11th)
Kimball Cassidy, Samford	370-168-1 (13th)	50-34 (2nd)	21-6 (2nd)
Frank Reed, Chattanooga	1,186-598 (34th)	710-511 (23rd)	259-135 (23rd)
Jim Clift, Western Carolina	234-350 (12th)	Same	79-143 (12th)

Preseason predictions

Preseason Poll Team (first-place votes)	Points
1. Samford (4)	33
2. UNCG (3)	31
3. Chattanooga	28
4. Furman	17
Western Carolina	17
6. Mercer	15
7. ETSU	6

Preseason Player of the Year
 Emily Coltharp, Chattanooga, Sr.

Preseason Pitcher of the Year
 McKenzie Newcomb, Samford, So.

Preseason All-SoCon First Team

P	McKenzie Newcomb, Samford, So.
P	Brooke Parrott, Chattanooga, Sr.
C	Delaney Cumbie, UNCG, 5th
IF	Rebeca Laudino, Mercer, Sr.
IF	Maycin Brown, UNCG, Sr.
IF	Emily Coltharp, Chattanooga, Sr.
IF	Bailey Huneycutt, Western Carolina, 5th
OF	Ashlee Lykins, Furman, Jr.
OF	Grace Loftin, UNCG, So.
OF	Brooklynn Brewington, Western Carolina, Sr.
DP	Riley Lambert, Western Carolina, Jr.

Preseason Second-Team All-SoCon

P	Sierra Tufts, Furman, Jr.
P	Jordyn Partain, Samford, So.
C	Riley Ludlam, Furman, Sr.
IF	Cameron Young, ETSU, So.
IF	Samantha Lagrama, UNCG, 5th
IF	Gwynnie Hornibrook, Samford, So.
IF	Kailey Snell, Chattanooga, Jr.
IF	Myra Twitty, Western Carolina, Gr.
OF	Caitlin Goldwait, Furman, So.
OF	Alyssa Woods, Mercer, Jr.
OF	Adison Keylon, Chattanooga, Jr.
DP	Kendall Forsythe, Chattanooga, Jr.



ETSU
(10-27, 3-6 SoCon)

F10	vs. Campbell [!]	L, 4-8
F11	vs. Miami (Ohio) [!]	L, 2-3
F11	at Charlotte [!]	L, 2-3
F12	vs. South Carolina [!]	CCD
F16	at South Carolina [^]	L, 2-9
F17	vs. Western Kentucky [^]	L, 1-6
F17	vs. George Washington [^]	L, 2-4
F18	vs. Campbell [^]	L, 3-9
F21	at Radford	L, 1-7
F21	at Radford	L, 5-7
F23	at NC State [%]	W, 5-0
F24	vs. James Madison [%]	L, 2-5
F24	at NC State [%]	L, 2-8
F25	vs. Pennsylvania [%]	W, 5-1
F26	vs. Pennsylvania [%]	W, 7-3
F28	APP STATE	L, 4-5
M8	BALL STATE	W, 3-2
M8	BALL STATE	L, 3-9
M10	vs. Nebraska Omaha \$	L, 1-6
M11	vs. Nebraska Omaha \$	L, 0-6
M11	vs. SE Louisiana \$	L, 2-7
M12	at Mississippi State \$	CCD
M14	MOREHEAD STATE	L, 2-7
M14	MOREHEAD STATE	W, 6-3
M16	EASTERN ILLINOIS	L, 2-5
M16	EASTERN ILLINOIS	W, 3-1
M17	EASTERN ILLINOIS	W, 3-0
M25	at UNCG [*]	L, 1-2 (8 inn.)
M25	at UNCG [*]	L, 1-14
M26	at UNCG [*]	L, 0-9
M28	at No. 6 Tennessee	L, 2-10
A1	FURMAN*	W, 2-1
A1	FURMAN*	L, 1-12
A2	FURMAN*	W, 8-1
A6	at Samford [*]	L, 0-2
A6	at Samford [*]	L, 1-5
A7	at Samford [*]	W, 7-3
A11	at App State	L, 3-4
A11	at App State	L, 3-5
A15	CHATTANOOGA*	1 p.m.
A15	CHATTANOOGA*	3 p.m.
A16	CHATTANOOGA*	1 p.m.
A18	at Tennessee Tech	4 p.m.
A18	at Tennessee Tech	6 p.m.
A25	RADFORD	4 p.m.
A25	RADFORD	6 p.m.
A29	at Western Carolina [*]	1 p.m.
A29	at Western Carolina [*]	3 p.m.
A30	at Western Carolina [*]	1 p.m.
M6	MERCER*	1 p.m.
M6	MERCER*	3 p.m.
M7	MERCER*	1 p.m.
M10-13	at SoCon Championship (Chattanooga, Tenn.)	

! - Charlotte Invitational (Charlotte, N.C.)
 ^ - Carolina Classic (Columbia, S.C.)
 % - Wolfpack Classic (Raleigh, N.C.)
 \$ - Bulldog Invitational (Starkville, Miss.)



Furman
(16-22, 6-2 SoCon)

F10	vs. Georgetown [!]	W, 3-2
F10	at Jacksonville [!]	L, 3-5
F11	vs. Georgetown [!]	CCD
F11	at North Florida [!]	CCD
F12	at North Florida [!]	CCD
F14	CLEMSON	L, 0-10
F17	SACRED HEART*	W, 10-2
F18	BINGHAMTON*	L, 5-9
F18	TOWSON*	L, 2-4
F19	BELLARMINE*	W, 5-1
F21	at Gardner-Webb	L, 10-12 (8 inn.)
F21	at Gardner-Webb	W, 11-4
F24	vs. Tulsa [%]	L, 4-7
F24	at South Alabama [%]	L, 2-3
F25	vs. Mississippi State [%]	L, 5-6
F26	vs. Louisiana Tech [%]	L, 3-7
F26	vs. Mississippi State [%]	L, 0-4
M3	vs. N.C. Central [!]	L, 4-5
M3	vs. Lehigh [!]	L, 1-3
M4	vs. Canisius [!]	L, 3-5
M4	at Campbell [!]	L, 3-7
M5	at Campbell [!]	L, 5-7
M7	at Presbyterian	W, 10-3
M7	at Presbyterian	L, 5-6
M11	CHARLESTON SOUTHERN	W, 6-2
M11	CHARLESTON SOUTHERN	W, 7-0
M15	at No. 18 Georgia	L, 1-7
M22	at South Carolina	L, 0-10
M22	at South Carolina	CCD
M25	at Western Carolina [*]	W, 7-4
M25	at Western Carolina [*]	W, 7-1
M26	at Western Carolina [*]	W, 9-1
M29	USC UPSTATE	L, 2-8
M29	USC UPSTATE	W, 4-3
A1	at ETSU [*]	L, 1-2
A1	at ETSU [*]	W, 12-1
A2	at ETSU [*]	L, 1-8
A5	at No. 4 Clemson	L, 1-4
A6	UNCG*	W, 5-4 (9 inn.)
A6	UNCG*	W, 9-8
A7	UNCG*	CCD
A12	at College of Charleston	W, 5-4 (8 inn.)
A12	at College of Charleston	W, 3-0
A15	MERCER*	1 p.m.
A15	MERCER*	3 p.m.
A16	MERCER*	1 p.m.
A19	QUEENS	4 p.m.
A19	QUEENS	6 p.m.
A22	at Samford [*]	2 p.m.
A22	at Samford [*]	4 p.m.
A23	at Samford [*]	2 p.m.
A29	CHATTANOOGA*	1 p.m.
A29	CHATTANOOGA*	3 p.m.
A30	CHATTANOOGA*	1 p.m.
M3	at North Carolina	1 p.m.
M10-13	at SoCon Championship (Chattanooga, Tenn.)	

! - River City Leadoff (Jacksonville, Fla.)
 ^ - Furman Invitational (Greenville, S.C.)
 % - South Alabama Tournament (Mobile, Ala.)
 \$ - Campbell Invitational (Buies Creek, N.C.)



Mercer
(12-26, 3-3 SoCon)

F10	HAMPTON*	W, 7-0
F11	FLORIDA A&M*	CCD
F12	HAMPTON*	L, 0-10
F12	FLORIDA A&M*	L, 1-5
F15	at Kennesaw State	L, 0-7
F17	vs. Monmouth [^]	W, 2-0
F17	at Stetson [^]	L, 1-3
F18	vs. Monmouth [^]	W, 10-4
F18	at Stetson [^]	L, 0-8
F19	vs. Fairfield [^]	W, 5-3
F22	TROY	L, 3-8
F24	SOUTH CAROLINA*	L, 1-11
F25	BELMONT*	L, 1-5
F25	JACKSONVILLE*	L, 1-13
F28	NORTHERN IOWA	L, 2-12
M3	vs. Longwood [!]	L, 2-8
M3	vs. Robert Morris [!]	L, 3-6
M4	vs. Longwood [!]	W, 2-0
M4	vs. Robert Morris [!]	W, 14-2
M5	at No. 9 Alabama [!]	L, 0-8
M8	at No. 4 Clemson	L, 0-18
M10	vs. Rutgers [!]	L, 3-6
M10	at No. 8 Florida [!]	L, 3-14
M11	at No. 8 Florida [!]	L, 0-8
M11	vs. Rutgers [!]	W, 3-2
M12	vs. No. 24 Louisiana	L, 2-3
M15	ALABAMA STATE	W, 10-2
M22	vs. Georgia State	W, 6-5 (10 inn.)
M22	vs. Georgia State	L, 2-9
M25	at Samford [*]	L, 1-3
M25	at Samford [*]	L, 3-4
M26	at Samford [*]	L, 6-7
M29	at Florida A&M	L, 2-3
A1	CHATTANOOGA*	W, 3-2
A1	CHATTANOOGA*	W, 4-3
A2	CHATTANOOGA*	W, 2-1
A4	GEORGIA TECH	L, 3-11
A6	at No. 6 Tennessee	L, 2-5
A6	vs. No. 23 Baylor	L, 0-11
A15	at Furman [*]	1 p.m.
A15	at Furman [*]	3 p.m.
A16	at Furman [*]	1 p.m.
A19	at Georgia Southern	4 p.m.
A19	at Georgia Southern	6 p.m.
A22	WESTERN CAROLINA*	2 p.m.
A22	WESTERN CAROLINA*	4 p.m.
A23	WESTERN CAROLINA*	1 p.m.
A26	at Georgia	5 p.m.
A29	UNCG*	2 p.m.
A29	UNCG*	4 p.m.
A30	UNCG*	1 p.m.
M6	at ETSU [*]	1 p.m.
M7	at ETSU [*]	3 p.m.
M7	at ETSU [*]	1 p.m.
M10-13	at SoCon Championship (Chattanooga, Tenn.)	

! - Heart of Georgia Classic (Macon, Ga.)
 ^ - Hatter Classic (DeLand, Fla.)
 % - Mercer Invitational (Macon, Ga.)
 \$ - Easton Crimson Classic (Tuscaloosa, Ala.)
 @ - Florida Tournament (Gainesville, Fla.)



UNCG
(24-16, 3-2 SoCon)

F10	vs. LIU [!]	W, 6-2
F10	vs. Binghamton [!]	W, 8-0
F11	at Florida Gulf Coast [!]	L, 3-4
F11	vs. Southern Illinois [!]	L, 6-9
F12	vs. Binghamton [!]	W, 10-1
F16	VIRGINIA	L, 2-6
F18	MOREHEAD STATE[^]	W, 8-0
F18	UNCW[^]	W, 4-3
F19	MOREHEAD STATE[^]	W, 7-2
F19	UNCW[^]	W, 9-1
F22	CAMPBELL	L, 1-3
F24	DELAWARE[%]	W, 4-3
F24	UCONN[%]	L, 1-3
F25	INDIANA[%]	W, 6-5
F25	UCONN[%]	L, 0-2
F26	INDIANA[%]	L, 2-17
M4	ELON	W, 3-2
M4	ELON	W, 10-5
M5	at Elon	W, 3-1
M8	at Charleston Southern	L, 0-3
M8	at Charleston Southern	W, 12-0
M10	vs. Jacksonville [§]	W, 3-0
M10	at No. 4 Clemson [§]	L, 0-3
M11	vs. Bryant [§]	L, 6-7
M11	at No. 4 Clemson [§]	L, 1-6
M15	NOTRE DAME	L, 3-12
M17	ARMY[@]	W, 10-2
M18	GARDNER-WEBB[@]	W, 14-4
M18	ARMY[@]	W, 9-0
M19	GARDNER-WEBB[@]	W, 5-3
M23	TOWSON	W, 4-3
M25	ETSU[*]	W, 2-1 (8 inn.)
M25	ETSU[*]	W, 14-1
M26	ETSU[*]	W, 9-0
M29	at Charlotte	W, 4-2
A4	NORTH CAROLINA	L, 7-8 (13 inn.)
A6	at Furman [*]	L, 4-5 (9 inn.)
A6	at Furman [*]	L, 8-9
A7	at Furman [*]	CCD
A12	at Radford	W, 8-2
A12	at Radford	L, 4-5
A15	SAMFORD[*]	1 p.m.
A15	SAMFORD[*]	3 p.m.
A16	SAMFORD[*]	1 p.m.
A19	at Duke	5 p.m.
A22	at Chattanooga [*]	1 p.m.
A22	at Chattanooga [*]	3 p.m.
A23	at Chattanooga [*]	1 p.m.
A29	at Mercer [*]	1 p.m.
A29	at Mercer [*]	3 p.m.
A30	at Mercer [*]	1 p.m.
M2	CHARLOTTE	6 p.m.
M6	WESTERN CAROLINA[*]	1 p.m.
M6	WESTERN CAROLINA[*]	3 p.m.
M7	WESTERN CAROLINA[*]	1 p.m.
M10-13	at SoCon Championship (Chattanooga, Tenn.)	

! - FGCU Kickoff Classic (Fort Myers, Fla.)
[^] - Spiro Classic (Greensboro, N.C.)
[%] - UNCG Invitational (Greensboro, N.C.)
[§] - Clemson Classic (Clemson, S.C.)
[@] - Spartan Classic (Greensboro, N.C.)



Samford
(17-23, 6-3 SoCon)

F10	vs. Seton Hall [!]	W, 1-0
F11	vs. Seton Hall [!]	CCD
F12	at Southern Miss [!]	L, 0-3
F12	at Southern Miss [!]	L, 2-3
F17	BALL STATE[@]	L, 3-5
F17	BALL STATE[@]	W, 8-7 (9 inn.)
F18	BELMONT[@]	L, 3-4(10 inn.)
F18	LINDENWOOD[@]	L, 0-1
F19	at UAB [@]	L, 2-3
F22	at Alabama	L, 2-3
F24	SOUTHERN INDIANA[^]	L, 0-1
F24	IUPUI[^]	W, 7-2
F25	NORTH ALABAMA[^]	L, 1-2
F25	IUPUI[^]	W, 3-1
F26	SOUTHERN INDIANA[^]	W, 5-2
F28	at Kennesaw State	L, 0-1
M3	vs. Ball State [%]	L, 0-3
M3	vs. Stetson [%]	W, 10-2
M4	vs. Stetson [%]	L, 0-1
M4	at No. 18 Georgia [%]	L, 0-9
M5	at No. 18 Georgia [%]	L, 3-11
M10	vs. Western Michigan [§]	W, 4-2
M11	vs. Western Michigan [§]	L, 1-10
M11	at Jacksonville State [§]	W, 7-1
M12	vs. Western Michigan [§]	CCD
M12	at Jacksonville State [§]	CCD
M14	ALABAMA STATE	W, 11-5
M16	vs. Purdue ⁺	L, 0-3
M17	vs. St. Thomas ⁺	W, 8-6
M17	at Ole Miss ⁺	W, 3-0
M18	vs. North Dakota State ⁺	L, 1-7
M18	vs. St. Thomas ⁺	L, 3-5
M22	at North Alabama	CCD
M25	MERCER[*]	W, 3-1
M25	MERCER[*]	W, 4-3
M26	MERCER[*]	W, 7-6
M29	NO. 22 AUBURN	L, 0-10
A1	at Western Carolina [*]	L, 5-7
A1	at Western Carolina [*]	L, 1-4
A2	at Western Carolina [*]	W, 5-4
A6	ETSU[*]	W, 2-0
A6	ETSU[*]	W, 5-1
A7	ETSU[*]	L, 3-7
A11	No. 14 ALABAMA	L, 2-6
A15	at UNCG [*]	1 p.m.
A15	at UNCG [*]	3 p.m.
A16	at UNCG [*]	1 p.m.
A19	UAB	6 p.m.
A22	FURMAN[*]	2 p.m.
A22	FURMAN[*]	4 p.m.
A23	FURMAN[*]	2 p.m.
A26	KENNESAW STATE	5 p.m.
M2	JACKSONVILLE STATE	TBA
M6	at Chattanooga [*]	1 p.m.
M6	at Chattanooga [*]	3 p.m.
M7	at Chattanooga [*]	1 p.m.
M10-13	at SoCon Championship (Chattanooga, Tenn.)	

! - USM Tournament (Hattiesburg, Miss.)
[@] - UAB Classic (Birmingham, Ala.)
[^] - Bulldog Classic (Birmingham, Ala.)
[%] - UGA Tournament (Athens, Ga.)
[§] - JSU Invitational (Jacksonville, Ala.)
⁺ - Ole Miss Tournament (Oxford, Miss.)



Chattanooga
(19-17, 2-4 SoCon)

F10	vs. James Madison [!]	W, 4-3
F12	at College of Charleston [!]	CCD
F17	MARSHALL[^]	CCD
F17	INDIANA STATE[^]	CCD
F18	MARSHALL[^]	W, 7-4
F18	WESTERN ILLINOIS[^]	W, 5-4
F19	MAINE[^]	L, 4-5
F19	WESTERN ILLINOIS[^]	L, 2-4
F22	TENNESSEE STATE	W, 3-2 (9 inn.)
F24	S.E. MISSOURI STATE[%]	CCD
F24	WESTERN MICHIGAN[%]	CCD
F24	MEMPHIS[%]	CCD
F25	EASTERN ILLINOIS[%]	W, 11-9
F25	UNLV[%]	L, 3-5
F26	AKRON[%]	L, 1-2
M3	vs. Harvard [§]	W, 7-3
M4	at Gardner-Webb [§]	W, 3-2
M4	vs. Sacred Heart [§]	W, 6-4
M5	vs. Harvard [§]	L, 2-5
M5	vs. Detroit [§]	W, 5-0
M10	vs. South Alabama [@]	L, 0-1
M10	vs. Iowa [@]	L, 0-6
M11	vs. Hartford [@]	W, 13-2
M11	vs. Bucknell [@]	W, 4-2
M12	vs. Lafayette [@]	W, 2-1
M15	vs. Princeton [@]	W, 7-6
M15	vs. Lehigh [@]	W, 3-1
M16	at Florida Gulf Coast	L, 4-5
M17	at Florida Gulf Coast	L, 0-6
M17	at Florida Gulf Coast	L, 3-4
M24	at No. 24 Virginia Tech	L, 7-12
M25	at No. 24 Virginia Tech	L, 1-4
M25	at No. 24 Virginia Tech	L, 5-9
M29	LIPSCOMB	W, 3-1
A1	at Mercer [*]	L, 2-3
A1	at Mercer [*]	L, 3-4
A2	at Mercer [*]	L, 1-2
A5	at Georgia State	W, 5-4
A5	at Georgia State	W, 5-1
A6	WESTERN CAROLINA[*]	W, 6-2
A6	WESTERN CAROLINA[*]	L, 1-2
A7	WESTERN CAROLINA[*]	W, 4-3
A15	ETSU [*]	1 p.m.
A15	ETSU [*]	3 p.m.
A16	ETSU [*]	1 p.m.
A19	at Austin Peay	5 p.m.
A22	UNCG[*]	1 p.m.
A22	UNCG[*]	3 p.m.
A23	UNCG[*]	2 p.m.
A29	at Furman [*]	1 p.m.
A29	at Furman [*]	3 p.m.
A30	at Furman [*]	1 p.m.
M6	SAMFORD[*]	1 p.m.
M6	SAMFORD[*]	3 p.m.
M7	SAMFORD[*]	2 p.m.
M10-13	at SoCon Championship (Chattanooga, Tenn.)	

! - Charleston Invitational (Charleston, S.C.)
[^] - Chattanooga Challenge (Chattanooga, Tenn.)
[%] - Frost Challenge (Chattanooga, Tenn.)
[§] - Gardner-Webb Tournament (Boiling Springs, N.C.)
[@] - Madeira Beach Invitational (Madeira Beach, Fla.)



Western Carolina
(13-19, 3-6 SoCon)

F10	vs. Tennessee Tech [!]	W, 1-0 (8 inn.)
F10	at Alabama State [!]	W, 1-0
F11	vs. UT Martin [!]	CCD
F11	at Alabama State [!]	CCD
F12	vs. UT Martin [!]	CCD
F22	at Presbyterian	L, 2-5
F22	at Presbyterian	L, 5-6
F24	vs. Northern Iowa [^]	L, 0-9
F24	vs. Tennessee State [^]	L, 0-3
F25	vs. Tennessee State [^]	W, 7-5
F25	at Georgia State [^]	L, 4-5
F26	vs. Northern Iowa [^]	L, 1-7
M1	at USC Upstate	L, 2-6
M1	at USC Upstate	L, 1-5
M7	at UC San Diego	W, 1-0
M8	at UC Riverside	W, 5-2
M8	at UC Riverside	L, 2-6
M10	vs. Yale [%]	W, 8-4
M10	vs. Michigan State [%]	CCD
M11	at San Diego [%]	CCD
M12	vs. Yale [%]	W, 2-1
M12	at San Diego [%]	L, 1-8
M15	at Georgia State	L, 3-6
M15	at Georgia State	L, 0-1
M21	at Gardner-Webb	W, 7-3
M21	at Gardner-Webb	W, 16-4
M25	FURMAN*	L, 4-7
M25	FURMAN*	L, 1-7
M26	FURMAN*	L, 1-9
M29	RADFORD	W, 10-4
M29	RADFORD	L, 6-7
A1	SAMFORD*	W, 7-5
A1	SAMFORD*	W, 4-1
A2	SAMFORD*	L, 4-5
A6	at Chattanooga [*]	L, 2-6
A6	at Chattanooga [*]	W, 2-1
A7	at Chattanooga [*]	L, 3-4
A18	APP STATE	4 p.m.
A22	at Mercer [*]	1 p.m.
A22	at Mercer [*]	3 p.m.
A23	at Mercer [*]	1 p.m.
A26	N.C. CENTRAL	3 p.m.
A26	N.C. CENTRAL	5 p.m.
A29	ETSU*	1 p.m.
A29	ETSU*	3 p.m.
A30	ETSU*	1 p.m.
M6	at UNCG [*]	1 p.m.
M6	at UNCG [*]	3 p.m.
M7	at UNCG [*]	1 p.m.
M10-13	at SoCon Championship (Chattanooga, Tenn.)	

! - Stinger Classic (Montgomery, Ala.)
 ^ - Panther Invitational at GSU (Atlanta, Ga.)
 % - San Diego Classic (San Diego, Calif.)

The Automated ScoreBook
SoCon Batting Leaders (as of Apr 13, 2023)
(All games)

Hitting minimums - 1 Games 50% of Games 2.0 AB/Game 2.5 TPA/Game
Pitching minimums - 1 Games 1.0 IP/Game

Batting avg		Slugging pct		On base pct	
1. Furman	.272	1. UNCG	.467	1. UNCG	.379
2. Chattanooga	.267	2. Furman	.416	2. Furman	.342
3. Samford	.261	3. Chattanooga	.394	3. Samford	.340
4. Western Carolina	.260	4. Samford	.386	4. Chattanooga	.329
5. UNCG	.258	5. Western Carolina	.375	5. Western Carolina	.323
6. ETSU	.256	6. ETSU	.337	6. ETSU	.314
7. Mercer	.227	7. Mercer	.323	7. Mercer	.311
Runs scored		Hits		Runs batted in	
1. UNCG	220	1. Furman	284	1. UNCG	214
2. Furman	174	2. Samford	269	2. Furman	157
3. Chattanooga	142	3. UNCG	262	3. Chattanooga	125
4. Samford	125	4. Chattanooga	260	4. Samford	115
5. Western Carolina	113	5. ETSU	249	5. Mercer	103
6. Mercer	110	6. Western Carolina	221	6. Western Carolina	98
7. ETSU	100	7. Mercer	205	7. ETSU	87
Doubles		Triples		Home runs	
1. UNCG	52	1. Furman	6	1. UNCG	50
2. Chattanooga	42	2. UNCG	5	2. Furman	35
Samford	42	3. Samford	3	3. Samford	27
4. Western Carolina	35	Chattanooga	3	4. Chattanooga	25
5. Furman	33	Western Carolina	3	5. Mercer	21
6. ETSU	29	6. ETSU	1	6. Western Carolina	19
7. Mercer	22	Mercer	1	7. ETSU	16
Total bases		Total plate appearances		At bats	
1. UNCG	474	1. UNCG	1240	1. Furman	1043
2. Furman	434	2. Samford	1187	2. Samford	1031
3. Samford	398	3. Furman	1183	3. UNCG	1014
4. Chattanooga	383	4. Chattanooga	1107	4. ETSU	974
5. ETSU	328	5. ETSU	1072	5. Chattanooga	973
6. Western Carolina	319	6. Mercer	1058	6. Mercer	903
7. Mercer	292	7. Western Carolina	950	7. Western Carolina	850
Walks		Hit by pitch		Strikeouts	
1. UNCG	179	1. Mercer	28	1. Mercer	229
2. Samford	107	2. Furman	26	2. Samford	226
3. Furman	88	3. UNCG	23	3. Chattanooga	193
4. Mercer	86	4. Samford	19	4. UNCG	177
5. Chattanooga	80	5. ETSU	18	5. Western Carolina	173
6. ETSU	68	6. Western Carolina	16	6. Furman	162
7. Western Carolina	66	7. Chattanooga	14	7. ETSU	158
Sac bunts		Sac flies		Stolen bases	
1. Mercer	33	1. Chattanooga	10	1. Furman	44
2. Chattanooga	30	2. UNCG	9	2. Chattanooga	40
3. Samford	26	3. Furman	8	3. Samford	35
4. Furman	18	Mercer	8	4. ETSU	31
5. UNCG	14	5. ETSU	6	Mercer	31
6. Western Carolina	13	6. Western Carolina	5	6. Western Carolina	26
7. ETSU	5	7. Samford	4	7. UNCG	6
Caught stealing		Steal attempts		Grounded into DP	
1. Furman	13	1. Furman	57	1. ETSU	18
2. Western Carolina	10	2. Chattanooga	47	2. Samford	11
3. Chattanooga	7	3. Samford	41	3. Furman	9
Mercer	7	4. Mercer	38	4. UNCG	7
5. Samford	6	5. ETSU	36	5. Western Carolina	5
6. ETSU	5	Western Carolina	36	6. Chattanooga	3
7. UNCG	2	7. UNCG	8		

The Automated ScoreBook
SoCon Pitching Leaders (as of Apr 13, 2023)
(All games)

Hitting minimums - 1 Games 50% of Games 2.0 AB/Game 2.5 TPA/Game
Pitching minimums - 1 Games 1.0 IP/Game

Earned run avg		Opposing bat avg		Innings pitched	
1. Chattanooga	3.02	1. Chattanooga	.222	1. Samford	269.0
2. Samford	3.10	2. UNCG	.267	2. UNCG	263.2
3. UNCG	3.29	3. Samford	.269	3. Furman	253.2
4. Furman	3.84	4. Furman	.283	4. Chattanooga	250.0
5. Western Carolina	4.16	5. Western Carolina	.291	5. ETSU	235.2
6. ETSU	4.93	6. ETSU	.295	6. Mercer	235.2
7. Mercer	6.03	7. Mercer	.302	7. Western Carolina	210.1
Batters struck out		Batters SO out looking		Wins	
1. Chattanooga	226	1. ETSU	52	1. UNCG	24
2. Samford	210	2. Samford	49	2. Chattanooga	19
3. UNCG	174	3. Chattanooga	45	3. Samford	17
4. Western Carolina	172	4. UNCG	44	4. Furman	16
5. ETSU	160	5. Mercer	41	5. Western Carolina	13
6. Furman	128	6. Western Carolina	30	6. Mercer	11
7. Mercer	112	7. Furman	25	7. ETSU	9
Losses		Saves		Runners picked off	
1. ETSU	27	1. Chattanooga	5	1. Samford	2
2. Mercer	25	2. UNCG	3	2. Mercer	1
3. Samford	23	3. Mercer	3	3. Western Carolina	1
4. Furman	22	4. Western Carolina	2	4. ETSU	1
5. Western Carolina	19	5. Samford	1		
6. Chattanooga	17				
7. UNCG	16				
Sac bunts allowed		Sac flies allowed		Hits allowed	
1. Samford	32	1. Chattanooga	14	1. Chattanooga	202
2. Chattanooga	24	2. ETSU	13	2. Western Carolina	249
3. Mercer	22	3. UNCG	12	3. UNCG	279
4. Western Carolina	20	4. Mercer	10	4. ETSU	281
5. Furman	17	5. Samford	9	5. Samford	282
6. UNCG	15	6. Furman	8	6. Furman	296
7. ETSU	11	7. Western Carolina	5	7. Mercer	300
Runs allowed		Earned runs allowed		Walks allowed	
1. Chattanooga	133	1. Chattanooga	108	1. Western Carolina	64
2. Western Carolina	142	2. Samford	119	2. Samford	76
3. UNCG	145	3. UNCG	124	3. UNCG	83
4. Samford	152	4. Western Carolina	125	4. Furman	108
5. Furman	179	5. Furman	139	5. Mercer	125
6. ETSU	197	6. ETSU	166	6. Chattanooga	135
7. Mercer	230	7. Mercer	203	7. ETSU	150
Doubles allowed		Triples allowed		Home runs allowed	
1. Chattanooga	30	1. Western Carolina	1	1. Furman	15
2. Furman	40	2. UNCG	2	2. Chattanooga	16
3. Western Carolina	45	3. Samford	4	3. Western Carolina	25
4. UNCG	46	4. ETSU	5	4. Samford	27
5. ETSU	47	5. Mercer	6	5. UNCG	29
6. Mercer	57	6. Chattanooga	10	6. Mercer	37
7. Samford	58	7. Furman	10	7. ETSU	37
Wild pitches		Balks		Hit batters	
1. Samford	31			1. ETSU	36
2. Chattanooga	27			2. Chattanooga	29
3. Mercer	22			3. UNCG	24
4. Furman	16			4. Mercer	22
5. Western Carolina	15			5. Furman	19
6. UNCG	15			6. Samford	12
7. ETSU	12			7. Western Carolina	10

Intentional BB allowed

The Automated ScoreBook
 SoCon Fielding Leaders (as of Apr 13, 2023)
 (All games)

Hitting minimums - 1 Games 50% of Games
 Pitching minimums - 1 Games 1.0 IP/Game

Fielding pct		Chances		Putouts	
1. Chattanooga	.968	1. Furman	1168	1. Samford	807
2. Western Carolina	.966	2. Samford	1141	2. UNCG	791
3. ETSU	.965	3. UNCG	1122	3. Furman	761
4. UNCG	.961	4. Chattanooga	1050	4. Chattanooga	750
5. Samford	.958	5. Mercer	1026	5. ETSU	707
6. Furman	.957	6. ETSU	954	6. Mercer	706
7. Mercer	.943	7. Western Carolina	876	7. Western Carolina	631
Assists		Errors		Fielding double plays	
1. Furman	357	1. Mercer	58	1. UNCG	21
2. UNCG	287	2. Furman	50	2. Furman	15
3. Samford	286	3. Samford	48	3. Mercer	12
4. Chattanooga	266	4. UNCG	44	4. Western Carolina	10
5. Mercer	262	5. Chattanooga	34	Chattanooga	10
6. Western Carolina	215	6. ETSU	33	6. ETSU	9
7. ETSU	214	7. Western Carolina	30	7. Samford	8
Stolen bases against		Caught stealing by		Steal attempts against	
1. Mercer	75	1. Samford	16	1. Mercer	79
2. Furman	65	2. ETSU	12	2. Furman	70
3. Chattanooga	48	3. UNCG	10	3. ETSU	58
4. Western Carolina	46	4. Western Carolina	9	4. Western Carolina	55
ETSU	46	5. Chattanooga	6	5. Samford	54
6. UNCG	40	6. Furman	5	Chattanooga	54
7. Samford	38	7. Mercer	4	7. UNCG	50
Passed balls		Catchers interference			
1. ETSU	16	1. Chattanooga	1		
2. Mercer	8	Furman	1		
3. Chattanooga	7				
4. UNCG	6				
5. Samford	5				
6. Furman	4				
Western Carolina	4				

The Automated ScoreBook
SoCon Batting Leaders (as of Apr 13, 2023)
(All games)

Hitting minimums - 1 Games 50% of Games 2.0 AB/Game 2.5 TPA/Game
Pitching minimums - 1 Games 1.0 IP/Game

Batting avg		Slugging pct		On base pct	
1. Riley Ludlam-FUR	.404	1. Riley Ludlam-FUR	.760	1. Delaney Cumbie-UNCG	.484
2. Rebeca Laudino-MER	.390	2. Kaili Phillips-UTC	.659	2. Kaili Phillips-UTC	.459
3. Brooklynn Brewington-WCU	.368	3. Kiley Perry-FUR	.651	3. Riley Ludlam-FUR	.449
4. Bailey Huneycutt-WCU	.360	Logan Champion-SAM	.651	4. Rebeca Laudino-MER	.442
5. Kiley Perry-FUR	.349	5. Grier Bruce-SAM	.614	5. Brooklynn Maxwell-UNCG	.437
Logan Champion-SAM	.349	6. Bailey Huneycutt-WCU	.610	6. Sara Muir-ETSU	.422
7. Sara Muir-ETSU	.343	7. Myra Twitty-WCU	.607	7. Bailey Huneycutt-WCU	.420
8. Cameron Young-ETSU	.342	8. Adison Keylon-UTC	.605	8. Samantha Lagrama-UNCG	.407
9. Kaili Phillips-UTC	.341	9. Sara Muir-ETSU	.574	9. Brooklynn Brewington-WCU	.400
10. Brooklynn Maxwell-UNCG	.328	10. Tory Hedgecock-MER	.559	10. Logan Champion-SAM	.397
Runs scored		Hits		Runs batted in	
1. Delaney Cumbie-UNCG	37	1. Rebeca Laudino-MER	46	1. Riley Ludlam-FUR	33
2. Maycin Brown-UNCG	28	2. Kiley Perry-FUR	44	2. Kiley Perry-FUR	31
Brooklynn Maxwell-UNCG	28	Logan Champion-SAM	44	3. Grier Bruce-SAM	28
4. Kiley Perry-FUR	25	4. Ashlee Lykins-FUR	42	Jessie Shipley-UNCG	28
5. Kaili Phillips-UTC	24	Brooklynn Brewington-WCU	42	Acelynn Sellers-UTC	28
Logan Champion-SAM	24	Riley Ludlam-FUR	42	6. Maycin Brown-UNCG	27
Ashlee Lykins-FUR	24	7. Cameron Young-ETSU	41	7. Bailey Huneycutt-WCU	26
8. Jessie Shipley-UNCG	23	8. Grier Bruce-SAM	39	8. Blayke Batten-UNCG	25
Brooklynn Brewington-WCU	23	Brooklynn Maxwell-UNCG	39	9. 3 tied at.....	24
10. 2 tied at.....	22	10. 3 tied at.....	37		
Doubles		Triples		Home runs	
1. Logan Champion-SAM	12	1. Ainsley Yoshizumi-FUR	3	1. Kiley Perry-FUR	11
2. Brooklynn Maxwell-UNCG	11	2. Brooklynn Maxwell-UNCG	2	Tory Hedgecock-MER	11
3. Riley Ludlam-FUR	10	Emily Coltharp-UTC	2	3. Grier Bruce-SAM	10
Delaney Cumbie-UNCG	10	Sarah Squillace-SAM	2	4. Maycin Brown-UNCG	9
5. Grier Bruce-SAM	9	5. 13 tied at.....	1	Riley Ludlam-FUR	9
Grace Loftin-UNCG	9			6. Sara Muir-ETSU	8
7. Bailey Huneycutt-WCU	8			Logan Champion-SAM	8
Cameron Young-ETSU	8			Adison Keylon-UTC	8
Blayke Batten-UNCG	8			9. 3 tied at.....	7
Olivia Lipari-UTC	8				
Total bases		Walks		Hit by pitch	
1. Logan Champion-SAM	82	1. Delaney Cumbie-UNCG	35	1. Hana Hashioka-FUR	11
Kiley Perry-FUR	82	2. Samantha Lagrama-UNCG	28	2. Delaney Cumbie-UNCG	8
3. Riley Ludlam-FUR	79	3. Brooklynn Maxwell-UNCG	22	3. Kasidy Dunn-ETSU	7
4. Grier Bruce-SAM	78	4. Jessie Shipley-UNCG	21	Kaili Phillips-UTC	7
5. Brooklynn Maxwell-UNCG	63	5. Ansley Yantis-SAM	19	5. Rebeca Laudino-MER	6
6. Sara Muir-ETSU	62	6. Olivia Lipari-UTC	18	6. Ansley Yantis-SAM	5
7. Bailey Huneycutt-WCU	61	7. Tory Hedgecock-MER	17	Sophie Sumner-MER	5
8. Delaney Cumbie-UNCG	59	Maycin Brown-UNCG	17	8. 5 tied at.....	4
9. Kaili Phillips-UTC	58	9. Blayke Batten-UNCG	15		
10. 2 tied at.....	57	Sylvia Burroughs-FUR	15		
Sac bunts		Sac flies		Stolen bases	
1. Bailey Ledvina-MER	9	1. Katie Helm-MER	4	1. Rebeca Laudino-MER	13
2. Sarah Squillace-SAM	5	2. Riley Ludlam-FUR	3	2. Kemiah Michel-ETSU	12
Ansley Yantis-SAM	5	Merritt Cahoon-SAM	3	Ashlee Lykins-FUR	12
Lillian Wilkerson-MER	5	Blayke Batten-UNCG	3	4. Alyssa Woods-MER	9
Adison Keylon-UTC	5	Sara Muir-ETSU	3	Emily Coltharp-UTC	9
Riley Kokinda-UTC	5	6. 6 tied at.....	2	McKayla Cothran-SAM	9
Caitlin Goldwait-FUR	5			7. Brooklynn Brewington-WCU	8
Ashlee Lykins-FUR	5			8. Caitlin Goldwait-FUR	7
9. 6 tied at.....	4			9. Parris Wiggs-MER	6
				Sarah Squillace-SAM	6

Total plate appearances

1. Delaney Cumbie-UNCG	153
2. Ashlee Lykins-FUR	149
3. Maycin Brown-UNCG	143
Brooklynn Maxwell-UNCG	143
5. Grier Bruce-SAM	140
6. Logan Champion-SAM	139
7. Kiley Perry-FUR	136
8. Sarah Squillace-SAM	135
9. Rebeca Laudino-MER	132
Merritt Cahoon-SAM	132

Strikeouts

1. Sarah Squillace-SAM	31
2. Ansley Yantis-SAM	25
3. Acelynn Sellers-UTC	24
Adison Keylon-UTC	24
5. Logan Champion-SAM	23
Tory Hedgecock-MER	23
7. 5 tied at.....	22

At bats

1. Ashlee Lykins-FUR	136
2. Grier Bruce-SAM	127
3. Logan Champion-SAM	126
Kiley Perry-FUR	126
5. Riley Nayadley-ETSU	124
6. Maycin Brown-UNCG	120
Cameron Young-ETSU	120
8. Brooklynn Maxwell-UNCG	119
9. 3 tied at.....	118

Caught stealing

1. Brooklynn Brewington-WCU	5
2. Claudia Riddle-WCU	3
Rebeca Laudino-MER	3
Ainsley Yoshizumi-FUR	3
Hannah Poole-FUR	3
6. 6 tied at.....	2

Steal attempts

1. Rebeca Laudino-MER	16
2. Ashlee Lykins-FUR	14
3. Kemiah Michel-ETSU	13
Brooklynn Brewington-WCU	13
5. Emily Coltharp-UTC	11
McKayla Cothran-SAM	11
7. Alyssa Woods-MER	10
8. Claudia Riddle-WCU	8
Caitlin Goldwait-FUR	8
Hannah Poole-FUR	8

Grounded into DP

1. Merritt Cahoon-SAM	3
Sara Muir-ETSU	3
Riley Ludlam-FUR	3
4. 13 tied at.....	2

The Automated ScoreBook
SoCon Pitching Leaders (as of Apr 13, 2023)
(All games)

Hitting minimums - 1 Games 50% of Games 2.0 AB/Game 2.5 TPA/Game
Pitching minimums - 1 Games 1.0 IP/Game

Earned run avg		Opposing bat avg		Innings pitched	
1. McKenzie Newcomb-SAM	1.98	1. Alyssa Lavdis-UTC	.194	1. McKenzie Newcomb-SAM	130.2
2. Taylor Long-UTC	2.39	2. Taylor Long-UTC	.209	2. Grace Taylor-MER	114.0
3. Peja Goold-UTC	2.59	3. Brooke Parrott-UTC	.214	3. Brianna Bailey-ETSU	111.0
4. Alyssa Lavdis-UTC	2.62	4. Salem Ward-UNCG	.239	4. Sierra Tufts-FUR	109.1
5. Maddie Spell-UNCG	2.95	5. McKenzie Newcomb-SAM	.244	5. Maddie Spell-UNCG	85.1
6. Salem Ward-UNCG	3.09	6. Jorde Chartrand-UNCG	.247	6. Emme Buzhardt-FUR	84.2
7. Rhyann Jones-UNCG	3.10	7. Peja Goold-UTC	.248	7. Tessa Juett-WCU	79.0
8. Brianna Bailey-ETSU	3.15	8. Sierra Tufts-FUR	.249	8. Katie Rearley-MER	75.2
9. Jayme Eilers-WCU	3.21	9. Brianna Bailey-ETSU	.252	9. Jorde Chartrand-UNCG	73.2
10. Sierra Tufts-FUR	3.27	10. Jayme Eilers-WCU	.271	10. Peja Goold-UTC	70.1
Batters struck out		Batters SO out looking		Wins	
1. McKenzie Newcomb-SAM	126	1. McKenzie Newcomb-SAM	32	1. McKenzie Newcomb-SAM	9
2. Brianna Bailey-ETSU	95	2. Brianna Bailey-ETSU	31	Sierra Tufts-FUR	9
3. Tessa Juett-WCU	83	3. Grace Taylor-MER	22	3. Rhyann Jones-UNCG	7
4. Peja Goold-UTC	72	4. Katie Rearley-MER	17	Maddie Spell-UNCG	7
5. Sierra Tufts-FUR	70	Sierra Tufts-FUR	17	Peja Goold-UTC	7
6. Jorde Chartrand-UNCG	66	6. Peja Goold-UTC	16	Brianna Bailey-ETSU	7
7. Taylor Long-UTC	61	Tessa Juett-WCU	16	7. Grace Taylor-MER	6
8. Maddie Spell-UNCG	52	8. Maddie Spell-UNCG	14	8. Salem Ward-UNCG	5
9. Katie Rearley-MER	50	Taylor Long-UTC	14	Emme Buzhardt-FUR	5
10. Jayme Eilers-WCU	47	10. Jorde Chartrand-UNCG	13	Jorde Chartrand-UNCG	5
Saves		Appearances		Games started	
1. Taylor Long-UTC	3	1. Grace Taylor-MER	33	1. Grace Taylor-MER	18
2. Grace Taylor-MER	2	2. McKenzie Newcomb-SAM	26	2. Brianna Bailey-ETSU	17
Jorde Chartrand-UNCG	2	3. Sierra Tufts-FUR	23	Sierra Tufts-FUR	17
4. Brooke Parrott-UTC	1	Brianna Bailey-ETSU	23	4. Katie Rearley-MER	14
Salem Ward-UNCG	1	Katie Rearley-MER	23	McKenzie Newcomb-SAM	14
Chloe Poss-SAM	1	6. Jorde Chartrand-UNCG	21	6. Maddie Spell-UNCG	13
Alyssa Lavdis-UTC	1	Emme Buzhardt-FUR	21	Rhyann Jones-UNCG	13
Katie Rearley-MER	1	8. Jordyn Partain-SAM	19	8. 4 tied at.....	11
Tessa Juett-WCU	1	9. Maddie Spell-UNCG	18		
Makenzie Martin-WCU	1	10. Taylor Long-UTC	17		
Games finished		Games in relief		Sac bunts allowed	
1. Grace Taylor-MER	15	1. Grace Taylor-MER	15	1. Grace Taylor-MER	15
2. McKenzie Newcomb-SAM	12	2. Emme Buzhardt-FUR	12	2. McKenzie Newcomb-SAM	12
3. Emme Buzhardt-FUR	11	McKenzie Newcomb-SAM	12	3. Sierra Tufts-FUR	11
4. Salem Ward-UNCG	10	Salem Ward-UNCG	12	Jordyn Partain-SAM	11
5. Taylor Long-UTC	8	5. Jorde Chartrand-UNCG	10	5. Taylor Long-UTC	8
Alyssa Lavdis-UTC	8	Taylor Long-UTC	10	6. Tessa Juett-WCU	7
7. Jorde Chartrand-UNCG	7	Alyssa Lavdis-UTC	10	Peja Goold-UTC	7
Makenzie Martin-WCU	7	Riley Hickok-MER	10	Jayme Eilers-WCU	7
9. 3 tied at.....	6	9. 3 tied at.....	9	9. Brooke Parrott-UTC	6
Sac flies allowed		Losses		10. 4 tied at.....	
1. Maddie Spell-UNCG	7	1. Grace Taylor-MER	14	Runners picked off	
2. Brooke Parrott-UTC	6	2. Brianna Bailey-ETSU	9	1. Logan Champion-SAM	2
Grace Taylor-MER	6	3. Lauralee Scott-FUR	8	2. Lillian Wilkerson-MER	1
4. Peja Goold-UTC	4	Sierra Tufts-FUR	8	Kaylee Higgins-ETSU	1
5. 9 tied at.....	3	McKenzie Newcomb-SAM	8	Mattie Mentel-WCU	1
		Tessa Juett-WCU	8		
		7. Katie Rearley-MER	7		
		8. Peja Goold-UTC	6		
		Jorde Chartrand-UNCG	6		
		Jordyn Partain-SAM	6		

Wild pitches	
1. Jordyn Partain-SAM	12
2. Peja Goold-UTC	10
Grace Taylor-MER	10
Emme Buzhardt-FUR	10
5. McKenzie Newcomb-SAM	9
6. Tessa Juett-WCU	8
7. Izzy Alley-UTC	7
8. Taylor Long-UTC	6
Riley Hickok-MER	6
10. 5 tied at.....	5

Intentional BB allowed	
------------------------	--

Earned runs allowed	
1. Alyssa Lavdis-UTC	15
2. Taylor Long-UTC	19
Salem Ward-UNCG	19
4. Taylor Norton-WCU	24
5. Jayme Eilers-WCU	26
Peja Goold-UTC	26
7. Rhyann Jones-UNCG	27
8. Makenzie Martin-WCU	29
9. Brooke Parrott-UTC	30
10. Lauralee Scott-FUR	35

Triples allowed	
1. Tessa Juett-WCU	0
Rhyann Jones-UNCG	0
Jayme Eilers-WCU	0
Jorde Chartrand-UNCG	0
Makenzie Martin-WCU	0
6. Taylor Long-UTC	1
Taylor Norton-WCU	1
McKenzie Newcomb-SAM	1
Maddie Spell-UNCG	1
Salem Ward-UNCG	1

Balks	
-------	--

Hits allowed	
1. Alyssa Lavdis-UTC	28
2. Salem Ward-UNCG	39
3. Taylor Long-UTC	42
4. Brooke Parrott-UTC	45
5. Makenzie Martin-WCU	49
6. Taylor Norton-WCU	53
7. Jordyn Partain-SAM	58
8. Jayme Eilers-WCU	59
9. Peja Goold-UTC	65
10. Jorde Chartrand-UNCG	71

Walks allowed	
1. Taylor Norton-WCU	7
2. Salem Ward-UNCG	15
Makenzie Martin-WCU	15
McKenzie Newcomb-SAM	15
5. Rhyann Jones-UNCG	17
Jayme Eilers-WCU	17
7. Maddie Spell-UNCG	18
8. Alyssa Lavdis-UTC	19
Lauralee Scott-FUR	19
10. Tessa Juett-WCU	25

Home runs allowed	
1. Taylor Norton-WCU	1
2. Peja Goold-UTC	2
Alyssa Lavdis-UTC	2
4. Salem Ward-UNCG	3
Taylor Long-UTC	3
Jordyn Partain-SAM	3
Rhyann Jones-UNCG	3
8. Lauralee Scott-FUR	4
Brooke Parrott-UTC	4
Emme Buzhardt-FUR	4

Hit batters	
1. Whitley Arnott-ETSU	15
2. Taylor Long-UTC	10
3. Brianna Bailey-ETSU	9
Katie Rearley-MER	9
Salem Ward-UNCG	9
6. Brooke Parrott-UTC	8
7. Sierra Tufts-FUR	7
8. Emme Buzhardt-FUR	6
Lauralee Scott-FUR	6
Jorde Chartrand-UNCG	6

Runs allowed	
1. Alyssa Lavdis-UTC	17
2. Salem Ward-UNCG	24
3. Taylor Norton-WCU	25
4. Taylor Long-UTC	26
5. Jayme Eilers-WCU	27
6. Peja Goold-UTC	32
Rhyann Jones-UNCG	32
Brooke Parrott-UTC	32
9. Makenzie Martin-WCU	33
10. Maddie Spell-UNCG	42

Doubles allowed	
1. Alyssa Lavdis-UTC	5
2. Makenzie Martin-WCU	6
Taylor Long-UTC	6
4. Taylor Norton-WCU	7
5. Peja Goold-UTC	8
Maddie Spell-UNCG	8
7. Brooke Parrott-UTC	10
Salem Ward-UNCG	10
9. Jorde Chartrand-UNCG	11
Jordyn Partain-SAM	11

The Automated ScoreBook
SoCon Fielding Leaders (as of Apr 13, 2023)
(All games)

Hitting minimums - 1 Games 50% of Games
Pitching minimums - 1 Games 1.0 IP/Game

Fielding pct		Chances		Putouts	
1. Kendal Pitts-ETSU	1.000	1. Kiley Perry-FUR	332	1. Kiley Perry-FUR	321
Jaden Cheek-UNCG	1.000	2. Merritt Cahoon-SAM	267	2. Merritt Cahoon-SAM	253
Bailey Treadway-WCU	1.000	3. Logan Champion-SAM	252	3. Acelynn Sellers-UTC	220
MaKayla Strickland-ETSU	1.000	4. Bailey Ledvina-MER	239	4. Logan Champion-SAM	215
Jeralynn Wells-WCU	1.000	5. Acelynn Sellers-UTC	232	5. Delaney Cumbie-UNCG	193
Hannah Pfeifer-UTC	1.000	6. Delaney Cumbie-UNCG	212	6. Jayce Purdy-UTC	184
Chloe Poss-SAM	1.000	7. Jayce Purdy-UTC	205	7. Bailey Ledvina-MER	181
8. Anna White-UNCG	.989	8. Samantha Lagrama-UNCG	183	8. Samantha Lagrama-UNCG	175
9. Merritt Cahoon-SAM	.989	Tory Hedgecock-MER	183	9. Myra Twitty-WCU	159
10. Myra Twitty-WCU	.988	10. Myra Twitty-WCU	164	10. Sara Muir-ETSU	135
Assists		Fielding double plays		Passed balls	
1. Alex Rose Molinar-FUR	99	1. Maycin Brown-UNCG	13	1. Kaylee Higgins-ETSU	11
2. Kaili Phillips-UTC	96	Kiley Perry-FUR	13	2. Delaney Cumbie-UNCG	5
3. Brooklynn Maxwell-UNCG	78	3. Jessie Shipley-UNCG	10	Jayce Purdy-UTC	5
4. Rebeca Laudino-MER	74	4. Bailey Ledvina-MER	9	Logan Champion-SAM	5
5. Jessie Shipley-UNCG	72	Brooklynn Maxwell-UNCG	9	Sophie Sumner-MER	5
6. Ansley Yantis-SAM	69	6. Acelynn Sellers-UTC	8	6. Samantha Reelee-WCU	4
7. Sarah Squillace-SAM	67	Kaili Phillips-UTC	8	7. Amber Atkins-ETSU	3
8. Bailey Huneycutt-WCU	64	Samantha Lagrama-UNCG	8	Lillian Wilkerson-MER	3
9. Maycin Brown-UNCG	63	9. Tory Hedgecock-MER	7	Hana Suniga-FUR	3
10. 2 tied at.....	61	Merritt Cahoon-SAM	7	10. Presley Williamson-UTC	2
Catchers interference		Steal attempts against		Stolen bases against	
1. Riley Ludlam-FUR	1	1. Sophie Sumner-MER	54	1. Sophie Sumner-MER	51
Presley Williamson-UTC	1	2. Logan Champion-SAM	53	2. Riley Ludlam-FUR	44
		3. Riley Ludlam-FUR	49	3. Logan Champion-SAM	37
		4. Delaney Cumbie-UNCG	42	4. Delaney Cumbie-UNCG	34
		5. Samantha Reelee-WCU	38	5. Samantha Reelee-WCU	32
		6. Jayce Purdy-UTC	35	Grace Taylor-MER	32
		7. Grace Taylor-MER	34	7. Jayce Purdy-UTC	30
		8. Sierra Tufts-FUR	29	8. Sierra Tufts-FUR	26
		9. Tessa Juett-WCU	25	9. Lillian Wilkerson-MER	24
		Lillian Wilkerson-MER	25	10. 2 tied at.....	22
Caught stealing by		Errors			
1. Logan Champion-SAM	16	1. Rebeca Laudino-MER	12		
2. Delaney Cumbie-UNCG	8	Brooklynn Maxwell-UNCG	12		
3. Brianna Bailey-ETSU	7	3. Maycin Brown-UNCG	11		
4. Samantha Reelee-WCU	6	Bailey Ledvina-MER	11		
Kaylee Higgins-ETSU	6	5. Ansley Yantis-SAM	10		
McKenzie Newcomb-SAM	6	Alex Rose Molinar-FUR	10		
7. Jayce Purdy-UTC	5	7. Grier Bruce-SAM	9		
Jordyn Partain-SAM	5	Avery Barton-MER	9		
Maddie Spell-UNCG	5	9. Bailey Huneycutt-WCU	8		
Riley Ludlam-FUR	5	Jessie Shipley-UNCG	8		

The Automated ScoreBook
Game Highs for SoCon (as of Apr 13, 2023)
(All games)

TEAM GAME HIGHS

Batting

At bats:	48	-	UNC Greensboro (vs North Carolina, Apr 04, 2023)
Runs scored:	16	-	Western Carolina (vs Gardner-Webb, Mar 21, 2023)
Hits:	17	-	East Tennessee State (vs Penn, Feb 26, 2023)
RBIs:	16	-	Western Carolina (vs Gardner-Webb, Mar 21, 2023)
Doubles:	6	-	UNCG (vs Binghamton, Feb 12, 2023)
Triples:	2	-	UNCG (vs Long Island, Feb 10, 2023)
Home runs:	5	-	UNC Greensboro (vs Gardner-Webb, Mar 18, 2023)
Total bases:	28	-	UNC Greensboro (vs Gardner-Webb, Mar 18, 2023)
Walks:	10	-	Mercer (vs Robert Morris, Mar 04, 2023)
Strikeouts:	15	-	Western Carolina (vs Northern Iowa, Feb 26, 2023)
Sac hits:	4	-	Chattanooga (vs Harvard, Mar 05, 2023)
	4	-	Mercer (vs Fairfield, Feb 19, 2023)
Sac flies:	2	-	(5 times)
Stolen bases:	6	-	Mercer Softball (vs ALST, Mar 15, 2023)
Caught stealing:	2	-	Furman (vs Gardner-Webb, Feb 21, 2023)
	2	-	Samford (vs North Dakota St, Mar 18, 2023)
Hit by pitch:	3	-	(8 times)
Runners LOB:	14	-	Furman (vs Presbyterian, Mar 07, 2023)
Hit into DP:	3	-	Furman (vs Charleston, Apr 12, 2023)
	3	-	East Tennessee St. (vs Omaha, Mar 10, 2023)

Fielding

Putouts:	39	-	UNC Greensboro (vs North Carolina, Apr 04, 2023)
Assists:	16	-	Furman (vs NC Central, Mar 03, 2023)
	16	-	Western Carolina (vs Tennessee State, Feb 25, 2023)
Errors:	6	-	Mercer (vs Hampton, Feb 12, 2023)
Passed balls:	4	-	ETSU (vs MOR, Mar 14, 2023)
DPs turned:	2	-	(8 times)

Pitching

Innings pitched:	13.0	-	UNC Greensboro (vs North Carolina, Apr 04, 2023)
Strikeouts:	15	-	Chattanooga (vs Detroit Mercy, Mar 05, 2023)
Hits allowed:	1	-	Furman (vs Charleston Southern, Mar 11, 2023)
Wild pitches:	4	-	Samford (vs St. Thomas, Mar 17, 2023)
	4	-	Chattanooga (vs Maine, Feb 19, 2023)
Hit batters:	5	-	ETSU (vs Campbell, Feb 10, 2023)

The Automated ScoreBook
Game Highs for SoCon (as of Apr 13, 2023)
(All games)

GAME HIGHS (BOTH TEAMS)

Batting

At bats:	68	-	UNC Greensboro vs Furman (Apr 06, 2023)
Runs scored:	17	-	UNC Greensboro vs Furman (Apr 06, 2023)
Hits:	22	-	UNC Greensboro vs Furman (Apr 06, 2023)
RBIs:	22	-	Samford vs Western Carolina (Apr 01, 2023)
Doubles:	16	-	Western Carolina vs Gardner-Webb (Mar 21, 2023)
Triples:	6	-	UNCG vs Binghamton (Feb 12, 2023)
Home runs:	2	-	Long Island vs UNCG (Feb 10, 2023)
Total bases:	5	-	Gardner-Webb vs UNC Greensboro (Mar 18, 2023)
Walks:	5	-	ETSU vs UNC Greensboro (Mar 25, 2023)
Strikeouts:	37	-	Mercer vs Samford (Mar 26, 2023)
Sac hits:	11	-	UNC Greensboro vs Furman (Apr 06, 2023)
Sac flies:	15	-	Western Carolina vs Northern Iowa (Feb 26, 2023)
Stolen bases:	15	-	Samford vs Western Carolina (Apr 01, 2023)
Caught stealing:	15	-	Western Carolina vs Chattanooga (Apr 07, 2023)
Hit by pitch:	4	-	(5 times)
Runners LOB:	2	-	(5 times)
Hit into DP:	6	-	ALST vs Mercer Softball (Mar 15, 2023)
	2	-	(4 times)
	3	-	(10 times)
	18	-	UNC Greensboro vs Furman (Apr 06, 2023)
	3	-	Furman vs Charleston (Apr 12, 2023)
	3	-	Furman vs Western Carolina (Mar 25, 2023)
	3	-	Omaha vs East Tennessee St. (Mar 10, 2023)

Fielding

Putouts:	52	-	UNC Greensboro vs Furman (Apr 06, 2023)
Assists:	23	-	UNC Greensboro vs Furman (Apr 06, 2023)
Errors:	23	-	Chattanooga vs Mercer (Apr 02, 2023)
Passed balls:	6	-	Hampton vs Mercer (Feb 12, 2023)
DPs turned:	4	-	MOR vs ETSU (Mar 14, 2023)
	3	-	Furman vs Charleston (Apr 12, 2023)
	3	-	Omaha vs East Tennessee St. (Mar 10, 2023)
	3	-	Furman vs Western Carolina (Mar 25, 2023)

Pitching

Innings pitched:	17.1	-	UNC Greensboro vs Furman (Apr 06, 2023)
Strikeouts:	15	-	Detroit Mercy vs Chattanooga (Mar 05, 2023)
	15	-	Samford vs Western Carolina (Apr 01, 2023)
	15	-	Western Carolina vs Chattanooga (Apr 07, 2023)
Hits allowed:	1	-	Charleston Southern vs Furman (Mar 11, 2023)
Wild pitches:	4	-	Maine vs Chattanooga (Feb 19, 2023)
	4	-	St. Thomas vs Samford (Mar 17, 2023)
Hit batters:	5	-	ETSU vs Campbell (Feb 10, 2023)

The Automated ScoreBook
Game Highs for SoCon (as of Apr 13, 2023)
(All games)

INDIVIDUAL GAME HIGHS

Batting

At bats:	6	-	(6 times)
Runs scored:	3	-	(20 times)
Hits:	5	-	Goldwait, Furman (vs UNC Greensboro, Apr 06, 2023)
RBIs:	6	-	G. Loftin, UNCG (vs Binghamton, Feb 12, 2023)
	6	-	J. Shipley, UNC Greensboro (vs Gardner-Webb, Mar 18, 2023)
Doubles:	2	-	(14 times)
Triples:	1	-	(22 times)
Home runs:	3	-	Bruce, Samford (vs Western Carolina, Apr 02, 2023)
	3	-	J. Shipley, UNC Greensboro (vs Gardner-Webb, Mar 18, 2023)
Total bases:	13	-	Bruce, Samford (vs Western Carolina, Apr 02, 2023)
Walks:	4	-	Cahoon, Samford (vs Western Carolina, Apr 02, 2023)
Strikeouts:	4	-	M.hall, Mercer (vs Georgia State, Mar 22, 2023)
Sac hits:	2	-	(7 times)
Sac flies:	2	-	S. Muir, East Tennessee State (vs George Washington, Feb 17, 2023)
Stolen bases:	2	-	(14 times)
Caught stealing:	1	-	(50 times)
Hit by pitch:	2	-	(7 times)
Runners LOB:	6	-	Perry, Furman (vs Presbyterian, Mar 07, 2023)

Fielding

Putouts:	16	-	Purdy, Chattanooga (vs Detroit Mercy, Mar 05, 2023)
Assists:	9	-	Molinar, Furman (vs NC Central, Mar 03, 2023)
Errors:	3	-	T.Hedgecock, Mercer (vs Hampton, Feb 12, 2023)
Passed balls:	4	-	K. Higgins, ETSU (vs MOR, Mar 14, 2023)

Pitching

Innings pitched:	9.1	-	M. Spell, UNC Greensboro (vs North Carolina, Apr 04, 2023)
Strikeouts:	15	-	Lavdis, Chattanooga (vs Detroit Mercy, Mar 05, 2023)
Wild pitches:	3	-	Partain, Samford (vs Southern Miss, Feb 12, 2023)
	3	-	Juett, Western Carolina (vs Radford, Mar 29, 2023)
	3	-	M. Spell, UNC Greensboro (vs Gardner-Webb, Mar 18, 2023)
Hit batters:	4	-	W. Arnott, ETSU (vs Campbell, Feb 10, 2023)

The Automated ScoreBook
SoCon Batting Leaders (as of Apr 13, 2023)
(SoCon games only)

Hitting minimums - 1 Games 50% of Games 2.0 AB/Game 2.5 TPA/Game
Pitching minimums - 1 Games 1.0 IP/Game

Batting avg		Slugging pct		On base pct	
1. Furman	.345	1. Furman	.578	1. UNCG	.430
2. Samford	.294	2. UNCG	.552	2. Furman	.398
3. Western Carolina	.291	3. Samford	.482	3. Samford	.378
4. UNCG	.288	4. Western Carolina	.418	4. Western Carolina	.340
5. Mercer	.252	5. Mercer	.394	5. Mercer	.326
6. ETSU	.244	6. ETSU	.308	6. ETSU	.279
7. Chattanooga	.183	7. Chattanooga	.275	7. Chattanooga	.272
Runs scored		Hits		Runs batted in	
1. Furman	51	1. Furman	77	1. Furman	45
2. UNCG	37	2. Western Carolina	69	2. UNCG	36
3. Samford	35	3. Samford	67	3. Samford	34
4. Western Carolina	28	4. ETSU	54	4. Western Carolina	26
5. ETSU	21	5. Mercer	39	5. Mercer	19
6. Mercer	19	6. UNCG	36	6. ETSU	18
7. Chattanooga	17	7. Chattanooga	28	7. Chattanooga	17
Doubles		Triples		Home runs	
1. Western Carolina	13	1. Western Carolina	1	1. Furman	15
2. Samford	8	Samford	1	2. Samford	11
3. Mercer	7	Furman	1	3. UNCG	8
UNCG	7	UNCG	1	4. Mercer	5
5. Chattanooga	5			Western Carolina	5
Furman	5			6. ETSU	4
7. ETSU	2			7. Chattanooga	3
Total bases		Total plate appearances		At bats	
1. Furman	129	1. Samford	271	1. Western Carolina	237
2. Samford	110	2. Western Carolina	260	2. Samford	228
3. Western Carolina	99	3. Furman	251	3. Furman	223
4. UNCG	69	4. ETSU	236	4. ETSU	221
5. ETSU	68	5. Mercer	183	5. Mercer	155
6. Mercer	61	6. Chattanooga	176	6. Chattanooga	153
7. Chattanooga	42	7. UNCG	168	7. UNCG	125
Walks		Hit by pitch		Strikeouts	
1. UNCG	29	1. UNCG	6	1. Western Carolina	43
2. Samford	28	2. Chattanooga	5	2. Samford	37
3. Furman	17	Mercer	5	3. ETSU	32
4. Western Carolina	16	4. Samford	4	4. Mercer	31
5. Chattanooga	14	ETSU	4	5. Furman	29
6. Mercer	13	6. Furman	3	6. Chattanooga	19
7. ETSU	7	7. Western Carolina	2	7. UNCG	16
Sac bunts		Sac flies		Stolen bases	
1. Samford	9	1. UNCG	5	1. Samford	10
2. Mercer	8	2. Samford	2	ETSU	10
3. Furman	7	Mercer	2	3. Chattanooga	9
4. Western Carolina	4	4. ETSU	1	4. Mercer	6
5. Chattanooga	3	Chattanooga	1	5. Furman	5
UNCG	3	Furman	1	6. Western Carolina	4
7. ETSU	2	Western Carolina	1	7. UNCG	1
Caught stealing		Steal attempts		Grounded into DP	
1. ETSU	3	1. ETSU	13	1. ETSU	3
Furman	3	2. Samford	12	Furman	3
3. Samford	2	3. Chattanooga	9	3. Western Carolina	2
4. Western Carolina	1	4. Furman	8	4. Chattanooga	1
Mercer	1	5. Mercer	7		
		6. Western Carolina	5		
		7. UNCG	1		

The Automated ScoreBook
SoCon Pitching Leaders (as of Apr 13, 2023)
(SoCon games only)

Hitting minimums - 1 Games 50% of Games 2.0 AB/Game 2.5 TPA/Game
Pitching minimums - 1 Games 1.0 IP/Game

Earned run avg		Opposing bat avg		Innings pitched	
1. Mercer	2.52	1. Chattanooga	.204	1. Samford	61.0
2. Chattanooga	2.52	2. Mercer	.209	2. Western Carolina	59.0
3. Furman	2.83	3. Samford	.284	3. ETSU	53.2
4. UNCG	3.39	4. UNCG	.290	4. Furman	52.0
5. Samford	3.67	5. ETSU	.297	5. Mercer	41.2
6. Western Carolina	4.75	6. Western Carolina	.302	6. Chattanooga	41.2
7. ETSU	6.26	7. Furman	.307	7. UNCG	33.0
Batters struck out		Batters SO out looking		Wins	
1. Western Carolina	46	1. Chattanooga	11	1. Furman	6
2. Samford	42	2. Western Carolina	9	Samford	6
3. Chattanooga	32	3. Mercer	8	3. UNCG	3
4. ETSU	29	4. ETSU	7	Mercer	3
5. Furman	28	5. Furman	5	Western Carolina	3
6. UNCG	18	Samford	5	ETSU	3
7. Mercer	12	7. UNCG	3	7. Chattanooga	2
Losses		Saves		Runners picked off	
1. ETSU	6	1. Mercer	1		
Western Carolina	6	Chattanooga	1		
3. Chattanooga	4				
4. Samford	3				
5. Mercer	3				
6. UNCG	2				
7. Furman	2				
Sac bunts allowed		Sac flies allowed		Hits allowed	
1. Western Carolina	10	1. ETSU	6	1. Chattanooga	31
2. Samford	8	2. Furman	2	2. Mercer	32
3. Chattanooga	5	Samford	2	3. UNCG	40
4. Mercer	5	4. Mercer	1	4. ETSU	62
5. Furman	3	Chattanooga	1	5. Furman	65
6. ETSU	3	Western Carolina	1	6. Samford	69
7. UNCG	2			7. Western Carolina	71
Runs allowed		Earned runs allowed		Walks allowed	
1. UNCG	16	1. Chattanooga	15	1. UNCG	7
2. Chattanooga	16	2. Mercer	15	2. Samford	11
3. Mercer	20	3. UNCG	16	3. Mercer	14
4. Furman	29	4. Furman	21	4. Chattanooga	17
5. Samford	33	5. Samford	32	5. Western Carolina	19
6. Western Carolina	45	6. Western Carolina	40	Furman	19
7. ETSU	49	7. ETSU	48	7. ETSU	37
Doubles allowed		Triples allowed		Home runs allowed	
1. UNCG	1	1. Chattanooga	0	1. Furman	2
2. Chattanooga	5	Samford	0	2. Chattanooga	3
3. Mercer	6	Western Carolina	0	3. Mercer	4
4. ETSU	6	4. ETSU	1	4. UNCG	5
5. Western Carolina	8	Furman	1	5. Samford	9
6. Furman	9	Mercer	1	6. Western Carolina	13
7. Samford	12	UNCG	1	7. ETSU	15
Wild pitches		Balks		Hit batters	
1. Samford	8			1. ETSU	8
2. Western Carolina	4			2. Chattanooga	6
Chattanooga	4			3. Western Carolina	5
4. UNCG	2			4. Furman	4
ETSU	2			5. Mercer	3
Furman	2			6. Samford	2
7. Mercer	1			7. UNCG	1

Intentional BB allowed

The Automated ScoreBook
 SoCon Fielding Leaders (as of Apr 13, 2023)
 (SoCon games only)

Hitting minimums - 1 Games 50% of Games
 Pitching minimums - 1 Games 1.0 IP/Game

Fielding pct		Chances		Putouts	
1. ETSU	.986	1. Samford	262	1. Samford	183
2. Chattanooga	.977	2. Western Carolina	246	2. Western Carolina	177
3. Western Carolina	.967	3. Furman	235	3. ETSU	161
4. Samford	.966	4. ETSU	214	4. Furman	156
5. Mercer	.963	5. Mercer	189	5. Mercer	125
6. UNCG	.958	6. Chattanooga	176	Chattanooga	125
7. Furman	.957	7. UNCG	143	7. UNCG	99
Assists		Errors		Fielding double plays	
1. Samford	70	1. Furman	10	1. Furman	6
2. Furman	69	2. Samford	9	2. ETSU	4
3. Western Carolina	61	3. Western Carolina	8	3. Western Carolina	3
4. Mercer	57	4. Mercer	7	UNCG	3
5. ETSU	50	5. UNCG	6	5. Mercer	2
6. Chattanooga	47	6. Chattanooga	4	Samford	2
7. UNCG	38	7. ETSU	3	7. Chattanooga	1
Stolen bases against		Caught stealing by		Steal attempts against	
1. Mercer	9	1. Samford	3	1. Western Carolina	11
Western Carolina	9	2. ETSU	2	2. Furman	9
3. Furman	7	Furman	2	Mercer	9
4. Chattanooga	6	Western Carolina	2	4. Samford	8
5. Samford	5	5. UNCG	1	5. ETSU	7
ETSU	5			6. Chattanooga	6
7. UNCG	4			7. UNCG	5
Passed balls		Catchers interference			
1. Western Carolina	3	1. Furman	1		
2. Chattanooga	1				
ETSU	1				
Furman	1				

The Automated ScoreBook
SoCon Batting Leaders (as of Apr 13, 2023)
(SoCon games only)

Hitting minimums - 1 Games 50% of Games 2.0 AB/Game 2.5 TPA/Game
Pitching minimums - 1 Games 1.0 IP/Game

Batting avg		Slugging pct		On base pct	
1. Brooklynn Maxwell-UNCG	.600	1. Brooklynn Maxwell-UNCG	1.267	1. Brooklynn Maxwell-UNCG	.700
2. Caitlin Goldwait-FUR	.517	2. Riley Ludlam-FUR	1.115	2. Samantha Lagrama-UNCG	.556
3. Riley Ludlam-FUR	.500	3. Grace Loftin-UNCG	.833	3. Delaney Cumbie-UNCG	.550
4. Alex Rose Molinar-FUR	.421	4. Grier Bruce-SAM	.778	4. Caitlin Goldwait-FUR	.533
5. Grace Loftin-UNCG	.417	5. Hannah Poole-FUR	.760	5. Alex Rose Molinar-FUR	.522
6. Kiley Perry-FUR	.393	6. Bailey Huneycutt-WCU	.731	6. Riley Ludlam-FUR	.517
7. Merritt Cahoon-SAM	.391	7. Kiley Perry-FUR	.714	7. Kaili Phillips-UTC	.500
8. Bailey Huneycutt-WCU	.385	8. Tory Hedgecock-MER	.684	8. Grace Loftin-UNCG	.467
Samantha Lagrama-UNCG	.385	9. Sara Muir-ETSU	.679	9. Grier Bruce-SAM	.452
10. Brooklynn Brewington-WCU	.382	10. Ansley Yantis-SAM	.652	10. Olivia Lipari-UTC	.450
Runs scored		Hits		Runs batted in	
1. Kiley Perry-FUR	8	1. Caitlin Goldwait-FUR	15	1. Riley Ludlam-FUR	12
Riley Ludlam-FUR	8	2. Brooklynn Brewington-WCU	13	2. Hannah Poole-FUR	11
Caitlin Goldwait-FUR	8	Riley Ludlam-FUR	13	3. Bailey Huneycutt-WCU	10
Delaney Cumbie-UNCG	8	4. Myra Twitty-WCU	11	4. Brooklynn Maxwell-UNCG	8
Sylvia Burroughs-FUR	8	Kiley Perry-FUR	11	Sara Muir-ETSU	8
6. Brooklynn Maxwell-UNCG	7	6. Sara Muir-ETSU	10	Grier Bruce-SAM	8
Brooklynn Brewington-WCU	7	Grier Bruce-SAM	10	7. Blayke Batten-UNCG	7
8. Logan Champion-SAM	6	Bailey Huneycutt-WCU	10	Kiley Perry-FUR	7
9. 7 tied at.....	5	9. 3 tied at.....	9	Myra Twitty-WCU	7
				10. 3 tied at.....	6
Doubles		Triples		Home runs	
1. Mattie Mentel-WCU	4	1. Brooklynn Brewington-WCU	1	1. Riley Ludlam-FUR	5
Samantha Reelee-WCU	4	Chrissy Fleming-FUR	1	2. Grier Bruce-SAM	3
3. Ansley Yantis-SAM	3	Brooklynn Maxwell-UNCG	1	Logan Champion-SAM	3
Bailey Huneycutt-WCU	3	Sarah Squillace-SAM	1	Tory Hedgecock-MER	3
5. Brooklynn Maxwell-UNCG	2			Sara Muir-ETSU	3
Grace Loftin-UNCG	2			Kiley Perry-FUR	3
Hannah Poole-FUR	2			Hannah Poole-FUR	3
Kaili Phillips-UTC	2			8. 6 tied at.....	2
Grier Bruce-SAM	2				
10. 23 tied at.....	1				
Total bases		Walks		Hit by pitch	
1. Riley Ludlam-FUR	29	1. Sarah Squillace-SAM	5	1. Kasidy Dunn-ETSU	3
2. Grier Bruce-SAM	21	Delaney Cumbie-UNCG	5	2. Kaili Phillips-UTC	2
3. Kiley Perry-FUR	20	Lindsey Nelson-SAM	5	Delaney Cumbie-UNCG	2
4. Hannah Poole-FUR	19	Jessie Shipley-UNCG	5	4. 22 tied at.....	1
Bailey Huneycutt-WCU	19	5. 9 tied at.....	4		
Sara Muir-ETSU	19				
Brooklynn Maxwell-UNCG	19				
8. Myra Twitty-WCU	18				
Logan Champion-SAM	18				
10. 3 tied at.....	15				
Sac bunts		Sac flies		Stolen bases	
1. McKayla Cothran-SAM	3	1. Merritt Cahoon-SAM	2	1. McKayla Cothran-SAM	4
Ashlee Lykins-FUR	3	Maycin Brown-UNCG	2	2. Rebeca Laudino-MER	3
3. Grace Loftin-UNCG	2	3. 9 tied at.....	1	3. 11 tied at.....	2
Lindsey Nelson-SAM	2				
Bailey Ledvina-MER	2				
Sylvia Burroughs-FUR	2				
7. 22 tied at.....	1				

Total plate appearances

1. Brooklynn Brewington-WCU	35
2. Sarah Squillace-SAM	34
3. Natalie Henry-WCU	33
McKayla Cothran-SAM	33
5. Logan Champion-SAM	32
Ashlee Lykins-FUR	32
7. Grier Bruce-SAM	31
8. 4 tied at.....	30

At bats

1. Brooklynn Brewington-WCU	34
2. Caitlin Goldwait-FUR	29
Natalie Henry-WCU	29
Myra Twitty-WCU	29
Logan Champion-SAM	29
6. Ashlee Lykins-FUR	28
Cameron Young-ETSU	28
Riley Nayadley-ETSU	28
Kiley Perry-FUR	28
Sara Muir-ETSU	28

Steal attempts

1. McKayla Cothran-SAM	4
2. Riley Nayadley-ETSU	3
Rebeca Laudino-MER	3
Jasmine Sanchez-ETSU	3
Caitlin Goldwait-FUR	3
6. 11 tied at.....	2

Strikeouts

1. Natalie Henry-WCU	7
Bailey Treadway-WCU	7
3. Hannah Poole-FUR	6
4. Logan Champion-SAM	5
Kedzie Howe-SAM	5
Katie Helm-MER	5
Riley Lambert-WCU	5
8. 13 tied at.....	4

Caught stealing

1. Claudia Riddle-WCU	1
Ansley Yantis-SAM	1
Jasmine Sanchez-ETSU	1
Merritt Cahoon-SAM	1
Caitlin Goldwait-FUR	1
Hannah Poole-FUR	1
Madi Wicker-MER	1
Alex Rose Molinar-FUR	1
Riley Nayadley-ETSU	1
Cameron Young-ETSU	1

Grounded into DP

1. Sylvia Burroughs-FUR	2
2. Jasmine Sanchez-ETSU	1
Kennedy Stewman-WCU	1
Makenzie Henderson-ETSU	1
Riley Ludlam-FUR	1
Kendal Pitts-ETSU	1
Mattie Mentel-WCU	1
Presley Williamson-UTC	1

The Automated ScoreBook
SoCon Pitching Leaders (as of Apr 13, 2023)
(SoCon games only)

Hitting minimums - 1 Games 50% of Games 2.0 AB/Game 2.5 TPA/Game
Pitching minimums - 1 Games 1.0 IP/Game

Earned run avg		Opposing bat avg		Innings pitched	
1. Emme Buzhardt-FUR	1.21	1. Brooke Parrott-UTC	.184	1. McKenzie Newcomb-SAM	34.2
2. Jorde Chartrand-UNCG	1.35	2. Taylor Long-UTC	.200	2. Sierra Tufts-FUR	31.1
3. Brooke Parrott-UTC	1.95	3. Katie Rearley-MER	.205	3. Brianna Bailey-ETSU	30.2
4. Katie Rearley-MER	2.33	4. Grace Taylor-MER	.222	4. Grace Taylor-MER	26.2
5. Taylor Long-UTC	2.42	5. Peja Goold-UTC	.241	5. Jayme Eilers-WCU	23.0
6. Maddie Spell-UNCG	2.55	6. McKenzie Newcomb-SAM	.243	6. Tessa Juett-WCU	21.0
7. McKenzie Newcomb-SAM	2.62	7. Jorde Chartrand-UNCG	.244	7. Jordyn Partain-SAM	19.2
8. Jayme Eilers-WCU	2.74	8. Brianna Bailey-ETSU	.252	8. Emme Buzhardt-FUR	17.1
9. Jordyn Partain-SAM	2.85	9. Jayme Eilers-WCU	.276	9. Makenzie Martin-WCU	15.0
10. Grace Taylor-MER	2.89	10. Jordyn Partain-SAM	.276	10. Brooke Parrott-UTC	14.1
Batters struck out		Batters SO out looking		Wins	
1. McKenzie Newcomb-SAM	26	1. Brianna Bailey-ETSU	6	1. McKenzie Newcomb-SAM	4
2. Tessa Juett-WCU	23	2. Jayme Eilers-WCU	5	2. Emme Buzhardt-FUR	3
3. Sierra Tufts-FUR	22	Peja Goold-UTC	5	Sierra Tufts-FUR	3
Brianna Bailey-ETSU	22	Grace Taylor-MER	5	4. Peja Goold-UTC	2
5. Jayme Eilers-WCU	16	5. Tessa Juett-WCU	4	Jayme Eilers-WCU	2
6. Peja Goold-UTC	14	Sierra Tufts-FUR	4	Jordyn Partain-SAM	2
7. Jordyn Partain-SAM	10	McKenzie Newcomb-SAM	4	Brianna Bailey-ETSU	2
8. Jorde Chartrand-UNCG	8	8. Katie Rearley-MER	3	Grace Taylor-MER	2
9. 4 tied at.....	7	9. 4 tied at.....	2	9. 6 tied at.....	1
Saves		Appearances		Games started	
1. Alyssa Lavdis-UTC	1	1. McKenzie Newcomb-SAM	7	1. Sierra Tufts-FUR	5
Grace Taylor-MER	1	2. Grace Taylor-MER	6	2. Brianna Bailey-ETSU	4
		3. Tessa Juett-WCU	5	McKenzie Newcomb-SAM	4
		Sierra Tufts-FUR	5	4. 8 tied at.....	3
		Brianna Bailey-ETSU	5		
		Makenzie Martin-WCU	5		
		7. Emme Buzhardt-FUR	4		
		Jordyn Partain-SAM	4		
		Jayme Eilers-WCU	4		
		10. 6 tied at.....	3		
Games finished		Games in relief		Sac bunts allowed	
1. McKenzie Newcomb-SAM	3	1. McKenzie Newcomb-SAM	3	1. Jayme Eilers-WCU	5
Alyssa Lavdis-UTC	3	Grace Taylor-MER	3	2. Grace Taylor-MER	4
Grace Taylor-MER	3	Alyssa Lavdis-UTC	3	3. Sierra Tufts-FUR	3
4. Tessa Juett-WCU	2	4. Kendall Thackston-ETSU	2	McKenzie Newcomb-SAM	3
Makenzie Martin-WCU	2	Tessa Juett-WCU	2	Jordyn Partain-SAM	3
6. 12 tied at.....	1	Lainey Baker-SAM	2	Tessa Juett-WCU	3
		Makenzie Martin-WCU	2	7. Whitley Arnott-ETSU	2
		8. 14 tied at.....	1	Peja Goold-UTC	2
				Makenzie Martin-WCU	2
				10. 9 tied at.....	1
Sac flies allowed		Losses		Runners picked off	
1. Brianna Bailey-ETSU	3	1. Tessa Juett-WCU	3		
2. Kendall Thackston-ETSU	2	2. Sara Muir-ETSU	2		
3. Grace Taylor-MER	1	Grace Taylor-MER	2		
Brooke Parrott-UTC	1	Whitley Arnott-ETSU	2		
Sierra Tufts-FUR	1	Makenzie Martin-WCU	2		
Makenzie Martin-WCU	1	Sierra Tufts-FUR	2		
Emme Buzhardt-FUR	1	Taylor Long-UTC	2		
Jordyn Partain-SAM	1	Brianna Bailey-ETSU	2		
Sara Muir-ETSU	1	9. 9 tied at.....	1		
Sara Bond-SAM	1				

Wild pitches		
1. Jordyn Partain-SAM		3
McKenzie Newcomb-SAM		3
Peja Goold-UTC		3
4. Sara Bond-SAM		2
Tessa Juett-WCU		2
Jayme Eilers-WCU		2
7. 8 tied at.....		1

Balks

Hit batters		
1. Whitley Arnott-ETSU		5
2. Brooke Parrott-UTC		4
3. Makenzie Martin-WCU		3
Sierra Tufts-FUR		3
5. Kendall Thackston-ETSU		2
6. 12 tied at.....		1

Intentional BB allowed

Hits allowed		
1. Taylor Long-UTC		7
2. Brooke Parrott-UTC		9
Katie Rearley-MER		9
4. Jorde Chartrand-UNCG		10
5. Rhyann Jones-UNCG		12
6. Peja Goold-UTC		13
7. Maddie Spell-UNCG		14
Whitley Arnott-ETSU		14
9. Makenzie Martin-WCU		20
10. Jordyn Partain-SAM		21

Runs allowed		
1. Jorde Chartrand-UNCG		2
2. Katie Rearley-MER		4
Brooke Parrott-UTC		4
Taylor Long-UTC		4
Maddie Spell-UNCG		4
6. Rhyann Jones-UNCG		6
Emme Buzhardt-FUR		6
8. Peja Goold-UTC		7
9. Jordyn Partain-SAM		9
Jayme Eilers-WCU		9

Earned runs allowed

Walks allowed		
1. Maddie Spell-UNCG		0
2. Rhyann Jones-UNCG		1
3. Katie Rearley-MER		2
McKenzie Newcomb-SAM		2
5. Jorde Chartrand-UNCG		3
6. Taylor Long-UTC		4
7. Jayme Eilers-WCU		6
Jordyn Partain-SAM		6
Peja Goold-UTC		6
Emme Buzhardt-FUR		6

Doubles allowed		
1. Maddie Spell-UNCG		0
Jorde Chartrand-UNCG		0
3. Rhyann Jones-UNCG		1
Jayme Eilers-WCU		1
Taylor Long-UTC		1
6. Brooke Parrott-UTC		2
Peja Goold-UTC		2
Katie Rearley-MER		2
Whitley Arnott-ETSU		2
Brianna Bailey-ETSU		2

Triples allowed

Home runs allowed		
1. Maddie Spell-UNCG		0
McKenzie Newcomb-SAM		0
Jorde Chartrand-UNCG		0
4. Rhyann Jones-UNCG		1
Taylor Long-UTC		1
Katie Rearley-MER		1
Brooke Parrott-UTC		1
8. Maddie Spell-UNCG		2
Jordyn Partain-SAM		2
Sierra Tufts-FUR		2

1. Jorde Chartrand-UNCG		2
2. Katie Rearley-MER		4
Brooke Parrott-UTC		4
Taylor Long-UTC		4
Maddie Spell-UNCG		4
6. Rhyann Jones-UNCG		6
Emme Buzhardt-FUR		6
8. Peja Goold-UTC		7
9. Jordyn Partain-SAM		9
Jayme Eilers-WCU		9

The Automated ScoreBook
SoCon Fielding Leaders (as of Apr 13, 2023)
(SoCon games only)

Hitting minimums - 1 Games 50% of Games
Pitching minimums - 1 Games 1.0 IP/Game

Fielding pct		Chances		Putouts	
1. Kiley Perry-FUR	1.000	1. Kiley Perry-FUR	62	1. Kiley Perry-FUR	61
Sarah Squillace-SAM	1.000	2. Merritt Cahoon-SAM	61	2. Merritt Cahoon-SAM	56
Sara Muir-ETSU	1.000	3. Myra Twitty-WCU	58	3. Myra Twitty-WCU	55
Riley Nayadley-ETSU	1.000	4. Logan Champion-SAM	51	4. Bailey Ledvina-MER	49
Delaney Cumbie-UNCG	1.000	5. Bailey Ledvina-MER	50	5. Logan Champion-SAM	43
Jasmine Sanchez-ETSU	1.000	6. Samantha Reelee-WCU	47	6. Samantha Reelee-WCU	42
Emily Coltharp-UTC	1.000	7. Acelynn Sellers-UTC	40	7. Acelynn Sellers-UTC	36
Jessie Shipley-UNCG	1.000	8. Alex Rose Molinar-FUR	38	8. Riley Ludlam-FUR	30
Faith Adams-ETSU	1.000	Sarah Squillace-SAM	38	9. Sara Muir-ETSU	29
Anna White-UNCG	1.000	10. Riley Ludlam-FUR	36	10. Jayce Purdy-UTC	28
Assists		Fielding double plays		Passed balls	
1. Alex Rose Molinar-FUR	26	1. Kiley Perry-FUR	6	1. Samantha Reelee-WCU	3
2. Rebeca Laudino-MER	18	2. Alex Rose Molinar-FUR	4	2. Riley Ludlam-FUR	1
3. Kaili Phillips-UTC	17	3. Sara Muir-ETSU	3	Jayce Purdy-UTC	1
Grier Bruce-SAM	17	Myra Twitty-WCU	3	Kaylee Higgins-ETSU	1
5. Cameron Young-ETSU	16	Riley Nayadley-ETSU	3		
6. Sarah Squillace-SAM	15	Hannah Poole-FUR	3		
Bailey Huneycutt-WCU	15	7. 8 tied at.....	2		
8. Hannah Poole-FUR	14				
Tory Hedgecock-MER	14				
10. 2 tied at.....	13				
Catchers interference		Steal attempts against		Stolen bases against	
1. Riley Ludlam-FUR	1	1. Riley Ludlam-FUR	9	1. Riley Ludlam-FUR	7
		Samantha Reelee-WCU	9	Samantha Reelee-WCU	7
		3. Logan Champion-SAM	8	3. Sophie Sumner-MER	6
		4. Sierra Tufts-FUR	6	4. Jayce Purdy-UTC	5
		Sophie Sumner-MER	6	Grace Taylor-MER	5
		6. Tessa Juett-WCU	5	Tessa Juett-WCU	5
		Makenzie Martin-WCU	5	Logan Champion-SAM	5
		Delaney Cumbie-UNCG	5	8. Delaney Cumbie-UNCG	4
		Grace Taylor-MER	5	Sierra Tufts-FUR	4
		Jayce Purdy-UTC	5	10. 6 tied at.....	3
Caught stealing by		Errors			
1. Logan Champion-SAM	3	1. Grier Bruce-SAM	2		
2. Riley Ludlam-FUR	2	Kasidy Dunn-ETSU	2		
Sierra Tufts-FUR	2	Sylvia Burroughs-FUR	2		
Samantha Reelee-WCU	2	Rebeca Laudino-MER	2		
Makenzie Martin-WCU	2	Hannah Poole-FUR	2		
6. 9 tied at.....	1	Alex Rose Molinar-FUR	2		
		Bailey Huneycutt-WCU	2		
		Riley Ludlam-FUR	2		
		9. 31 tied at.....	1		

The Automated ScoreBook
Game Highs for SoCon (as of Apr 13, 2023)
(SoCon games only)

TEAM GAME HIGHS

Batting

At bats:	35	-	Furman (vs UNC Greensboro, Apr 06, 2023)
Runs scored:	14	-	UNC Greensboro (vs ETSU, Mar 25, 2023)
Hits:	13	-	Furman (vs UNC Greensboro, Apr 06, 2023)
RBIs:	13	-	UNC Greensboro (vs ETSU, Mar 25, 2023)
Doubles:	4	-	Mercer (vs Samford, Mar 26, 2023)
	4	-	Western Carolina (vs Samford, Apr 01, 2023)
Triples:	1	-	(4 times)
Home runs:	4	-	FUR (vs ETSU, Apr 02, 2023)
	4	-	UNC Greensboro (vs ETSU, Mar 25, 2023)
Total bases:	23	-	FUR (vs ETSU, Apr 02, 2023)
Walks:	7	-	UNC Greensboro (vs Furman, Apr 06, 2023)
	7	-	UNC Greensboro (vs ETSU, Mar 25, 2023)
Strikeouts:	9	-	Mercer (vs Chattanooga, Apr 01, 2023)
Sac hits:	3	-	Samford (vs Western Carolina, Apr 01, 2023)
	3	-	Furman (vs Western Carolina, Mar 25, 2023)
	3	-	Mercer (vs Chattanooga, Apr 01, 2023)
Sac flies:	2	-	UNC Greensboro (vs ETSU, Mar 25, 2023)
Stolen bases:	3	-	Chattanooga (vs Western Carolina, Apr 07, 2023)
	3	-	Samford (vs Mercer, Mar 25, 2023)
	3	-	ETSU (vs FUR, Apr 02, 2023)
Caught stealing:	1	-	(10 times)
Hit by pitch:	2	-	(5 times)
Runners LOB:	13	-	UNC Greensboro (vs Furman, Apr 06, 2023)
Hit into DP:	2	-	FUR (vs ETSU, Apr 02, 2023)
	2	-	Western Carolina (vs Furman, Mar 25, 2023)

Fielding

Putouts:	27	-	Furman (vs UNC Greensboro, Apr 06, 2023)
	27	-	Mercer (vs Chattanooga, Apr 02, 2023)
Assists:	14	-	Furman (vs Western Carolina, Mar 25, 2023)
	14	-	Mercer (vs Chattanooga, Apr 02, 2023)
Errors:	3	-	(4 times)
Passed balls:	1	-	(6 times)
DPs turned:	2	-	Furman (vs Western Carolina, Mar 25, 2023)
	2	-	ETSU (vs FUR, Apr 02, 2023)

Pitching

Innings pitched:	9.0	-	Furman (vs UNC Greensboro, Apr 06, 2023)
	9.0	-	Mercer (vs Chattanooga, Apr 02, 2023)
Strikeouts:	9	-	Chattanooga (vs Mercer, Apr 01, 2023)
Hits allowed:	2	-	Samford (vs ETSU, Apr 06, 2023)
Wild pitches:	3	-	Chattanooga (vs Mercer, Apr 01, 2023)
	3	-	Samford (vs ETSU, Apr 07, 2023)
Hit batters:	2	-	(5 times)

The Automated ScoreBook
Game Highs for SoCon (as of Apr 13, 2023)
(SoCon games only)

GAME HIGHS (BOTH TEAMS)

Batting

At bats:	68	-	UNC Greensboro vs Furman (Apr 06, 2023)
Runs scored:	17	-	UNC Greensboro vs Furman (Apr 06, 2023)
Hits:	22	-	UNC Greensboro vs Furman (Apr 06, 2023)
RBIs:	22	-	Samford vs Western Carolina (Apr 01, 2023)
Doubles:	14	-	ETSU vs UNC Greensboro (Mar 25, 2023)
Triples:	14	-	UNC Greensboro vs Furman (Apr 06, 2023)
Home runs:	5	-	Mercer vs Samford (Mar 26, 2023)
Total bases:	5	-	Samford vs Western Carolina (Apr 01, 2023)
Walks:	1	-	(4 times)
Strikeouts:	5	-	ETSU vs UNC Greensboro (Mar 25, 2023)
Sac hits:	37	-	Mercer vs Samford (Mar 26, 2023)
Sac flies:	11	-	UNC Greensboro vs Furman (Apr 06, 2023)
Stolen bases:	15	-	Samford vs Western Carolina (Apr 01, 2023)
Caught stealing:	15	-	Western Carolina vs Chattanooga (Apr 07, 2023)
Hit by pitch:	4	-	Chattanooga vs Mercer (Apr 01, 2023)
Runners LOB:	4	-	Samford vs Western Carolina (Apr 01, 2023)
Hit into DP:	4	-	UNC Greensboro vs Furman (Apr 06, 2023)
	2	-	ETSU vs UNC Greensboro (Mar 25, 2023)
	4	-	Mercer vs Samford (Mar 25, 2023)
	2	-	Furman vs Western Carolina (Mar 25, 2023)
	2	-	ETSU vs Samford (Apr 06, 2023)
	3	-	FUR vs ETSU (Apr 02, 2023)
	3	-	Chattanooga vs Mercer (Apr 02, 2023)
	18	-	UNC Greensboro vs Furman (Apr 06, 2023)
	3	-	Furman vs Western Carolina (Mar 25, 2023)

Fielding

Putouts:	52	-	UNC Greensboro vs Furman (Apr 06, 2023)
Assists:	23	-	UNC Greensboro vs Furman (Apr 06, 2023)
Errors:	23	-	Chattanooga vs Mercer (Apr 02, 2023)
Passed balls:	5	-	UNC Greensboro vs Furman (Apr 06, 2023)
DPs turned:	1	-	(6 times)
	3	-	Furman vs Western Carolina (Mar 25, 2023)

Pitching

Innings pitched:	17.1	-	UNC Greensboro vs Furman (Apr 06, 2023)
Runs allowed:	2	-	ETSU vs Samford (Apr 06, 2023)
Earned runs:	2	-	(4 times)
Walks allowed:	1	-	Furman vs Western Carolina (Mar 25, 2023)
Strikeouts:	15	-	Western Carolina vs Chattanooga (Apr 07, 2023)
Hits allowed:	15	-	Samford vs Western Carolina (Apr 01, 2023)
Wild pitches:	6	-	Chattanooga vs Mercer (Apr 02, 2023)
Hit batters:	3	-	Samford vs Western Carolina (Apr 01, 2023)
	3	-	ETSU vs Samford (Apr 07, 2023)
	3	-	Chattanooga vs Mercer (Apr 01, 2023)
	3	-	FUR vs ETSU (Apr 02, 2023)
	3	-	Chattanooga vs Mercer (Apr 02, 2023)

The Automated ScoreBook
Game Highs for SoCon (as of Apr 13, 2023)
(SoCon games only)

INDIVIDUAL GAME HIGHS

Batting

At bats:	5	-	(6 times)
Runs scored:	3	-	(6 times)
Hits:	5	-	Goldwait, Furman (vs UNC Greensboro, Apr 06, 2023)
RBIs:	5	-	(6 times)
Doubles:	2	-	(5 times)
Triples:	1	-	(4 times)
Home runs:	3	-	Bruce, Samford (vs Western Carolina, Apr 02, 2023)
Total bases:	13	-	Bruce, Samford (vs Western Carolina, Apr 02, 2023)
Walks:	4	-	Cahoon, Samford (vs Western Carolina, Apr 02, 2023)
Strikeouts:	3	-	Butler, Samford (vs Western Carolina, Apr 02, 2023)
	3	-	Treadway, Western Carolina (vs Samford, Apr 01, 2023)
Sac hits:	1	-	(36 times)
Sac flies:	1	-	(13 times)
Stolen bases:	2	-	R.Laudino, Mercer (vs Samford, Mar 26, 2023)
	2	-	Howe, Samford (vs Mercer, Mar 25, 2023)
Caught stealing:	1	-	(10 times)
Hit by pitch:	1	-	(29 times)
Runners LOB:	5	-	(4 times)

Fielding

Putouts:	15	-	Perry, Furman (vs Western Carolina, Mar 25, 2023)
Assists:	7	-	Molinar, Furman (vs UNC Greensboro, Apr 06, 2023)
Errors:	1	-	(47 times)
Passed balls:	1	-	(6 times)

Pitching

Innings pitched:	9.0	-	Tufts, Furman (vs UNC Greensboro, Apr 06, 2023)
Strikeouts:	8	-	Juett, Western Carolina (vs Samford, Apr 01, 2023)
Wild pitches:	2	-	(4 times)
Hit batters:	2	-	(5 times)