



SOUTHERN CONFERENCE SOFTBALL



702 North Pine Street, Spartanburg, SC 29303 • 864-591-5100 • Fax: 864-591-3448

Ralan Wardlaw, Assistant Director of Media Relations (SB contact)

facebook.com/SouthernConference • twitter.com/SoConSports • instagram.com/SouthernConference

2023 SOUTHERN CONFERENCE SOFTBALL STANDINGS

	Conference					Overall					
	W-L	Pct.	H	A	ST	W-L	Pct.	H	A	N	ST
Chattanooga	0-0	0.000	0-0	0-0	---	4-2	.667	3-2	0-0	1-0	W1
UNCG	0-0	0.000	0-0	0-0	---	7-4	.636	4-2	0-1	3-1	L1
Western Carolina	0-0	0.000	0-0	0-0	---	2-2	.500	1-0	1-2	0-0	L2
Furman	0-0	0.000	0-0	0-0	---	4-5	.444	2-3	1-2	1-0	W1
Mercer	0-0	0.000	0-0	0-0	---	4-6	.400	1-3	0-3	3-0	L1
Samford	0-0	0.000	0-0	0-0	---	2-7	.222	1-3	0-4	1-0	L4
ETSU	0-0	0.000	0-0	0-0	---	1-9	.100	0-0	1-4	0-5	W1

UPCOMING SCHEDULE (ALL TIMES EASTERN)

Feb. 24 (Friday)

Western Carolina vs. Northern Iowa, 10 a.m.¹
 Furman vs. Tulsa, 11 a.m.²
 Western Carolina vs. Tennessee State, 12:30 p.m.¹
 ETSU vs. James Madison, 12:30 p.m.³
 Delaware at UNCG, 3 p.m.⁵
 Akron at Chattanooga, 3 p.m.⁴
 Furman at South Alabama, 4 p.m.²
 Southern Indiana at Samford, 5:30 p.m.⁶
 S.E. Missouri State at Chattanooga, 5:30 p.m.⁴
 ETSU at North Carolina State, 5:30 p.m.³
 Connecticut at UNCG, 5:30 p.m.⁵
 South Carolina at Mercer, 6:30 p.m.⁷
 IUPUI at Samford, 7 p.m.⁶

Feb. 25 (Saturday)

Western Carolina at Tennessee State, 10 a.m.¹
 North Alabama at Samford, Noon⁶
 Eastern Illinois at Chattanooga, 12:30 p.m.⁴
 ETSU vs. Pennsylvania, 12:30 p.m.³
 Indiana at UNCG, 1:30 p.m.⁵
 Belmont at Mercer, 1:30 p.m.⁷
 Western Carolina at Georgia State, 3 p.m.¹
 Furman vs. Mississippi State, 4 p.m.²
 UNLV at Chattanooga, 4 p.m.⁴
 TBD at UNCG, 4 p.m.⁵
 Jacksonville at Mercer, 4 p.m.⁷
 IUPUI at Samford, 5 p.m.⁶

Feb. 26 (Sunday)

Furman at Louisiana Tech, 10 a.m.²
 TBD at UNCG, 10 a.m.⁵
 Western Carolina at Northern Iowa, 10 a.m.¹
 ETSU vs. Pennsylvania, 10 a.m.³
 Southern Indiana at Samford, 11 a.m.⁶
 Western Michigan at Chattanooga, 11 a.m.⁴
 Furman vs. Mississippi State, 12:15 p.m.²
 Memphis at Chattanooga, 1:30 p.m.⁴

¹ - Panther Invitational at GSU (Atlanta, Ga.)
² - South Alabama Tournament (Mobile, Ala.)
³ - Wolfpack Classic (Raleigh, N.C.)
⁴ - Frost Classic (Chattanooga, Tenn.)
⁵ - UNCG Invitational (Greensboro, N.C.)
⁶ - Samford Bulldog Classic (Birmingham, Ala.)
⁷ - Mercer Bear Invitational (Macon, Ga.)

Feb. 28 (Tuesday)

App State at ETSU, 4 p.m.
 Samford at Kennesaw State, 5 p.m.
 Northern Iowa at Mercer, 6 p.m.

March 1 (Wednesday)

Western Carolina at USC Upstate, 2 p.m.
 Western Carolina at USC Upstate, 4 p.m.

SoCon PLAYER OF THE WEEK (2/20)

Riley Ludlam, Sr., C, Furman

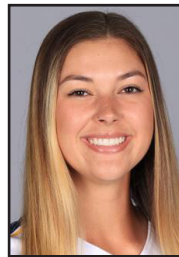
Furman's Ludlam hit .467 over five games as the Paladins went 2-3 against Clemson and during the Furman Invitational. On Valentine's Day, Ludlam went 2-for-3 with a double as Furman fell 10-0 to the seventh-ranked Clemson Tigers. Three days later, the Paladins began the Furman Invitational with a 10-2 win in five innings over Sacred Heart as Ludlam was 3-for-3 with a home run, a double, three RBIs and two runs scored in the contest. The Fort Myers, Florida, native went 1-for-4 with an RBI as Furman fell to Binghamton, 9-5, on Feb. 18. Later that day, Ludlam had a walk and a run scored in the Paladins 4-2 setback against Towson. In the weekend finale on Sunday, Ludlam went 1-for-3 with a double and an RBI as Furman defeated Bellarmine 5-1. The senior had 22 putouts and two assists with zero errors on defense in the Paladins' five games last week.



SoCon PITCHER OF THE WEEK (2/20)

Maddie Spell, R-So., UNCG

UNCG's Spell won both of her starts over the weekend in the Spiro Classic in Greensboro, North Carolina. The redshirt sophomore from Lawrenceville, Georgia, pitched a complete game with a career-best seven strikeouts in the Spartans' 8-0 win over Morehead State on Saturday. The next day, Spell tossed another complete game, throwing two strikeouts and allowing one unearned run as UNCG defeated UNCW, 9-1, in five innings. Spell allowed just eight hits and gave up zero walks in the two games combined.



NOTES

- Four of the seven Southern Conference teams are hosting home tournaments this weekend, with ETSU, Furman and Western Carolina going on the road.
- Reigning SoCon Tournament champs Chattanooga and reigning regular-season champ UNCG are off to a great start as both team have a winning percentage over .600 two weeks into the season.
- Western Carolina's Samantha Reece has been hot at the plate to start the season. Reece leads the league in batting average (.444) and on-base percentage (.583).
- Furman will face Mississippi State, who is ranked 29th in the NCAA, twice this weekend in the South Alabama Tournament.
- UNCG catcher Delaney Cumbie is the SoCon's active career leader runs (146), RBIs (111) and home runs (38).
- Mercer is hosting its second tournament of the season. The Bears welcome South Carolina, Belmont and Jacksonville this weekend.
- ETSU coach Cheryl Milligan won her first game as the head coach of the Buccaneers on Thursday at North Carolina State, 5-0.

ACTIVE SoCON CAREER LEADERS

BATTING AVERAGE [Minimum 250 AB]

.356 - Emily Coltharp (190-525); Chattanooga, 2019-pr.

ON-BASE PCT [Minimum 250 AB]

.483 - Delaney Cumbie; UNCG, 2019-pr.

SLUGGING PCT [Minimum 250 AB]

.606 - Bailey Huneycutt; Western Carolina, 2019-pr.

AT BATS

540 - Emily Coltharp ; Chattanooga, 2019-pr.

RUNS SCORED

146 - Delaney Cumbie; UNCG, 2019-pr.

HITS

192 - Emily Coltharp ; Chattanooga, 2019-pr.

RUNS BATTED IN

111 - Delaney Cumbie; UNCG, 2019-pr.

DOUBLES

35 - Riley Ludlam; Furman, 2020-pr.

TRIPLES

4 - Olivia Lipar, Chattanooga, 2022-pr.

HOME RUNS

38 - Delaney Cumbie; UNCG, 2019-pr.

TOTAL BASES

303 - Delaney Cumbie; UNCG, 2019-pr.

WALKS

132 - Delaney Cumbie; UNCG, 2019-pr.

STOLEN BASES

53 - Emily Coltharp ; Chattanooga, 2019-pr.

STOLEN BASE PCT [Minimum 50 steal attempts]

.869 - Emily Coltharp ; Chattanooga, 2019-pr.

EARNED RUN AVERAGE [Minimum 200 IP]

1.86 - McKenzie Newcomb, Samford, 2022-pr.

WINS

23 - Brooke Parrott, Chattanooga, 2021-pr.

SAVES

3 - Brooke Parrott, Chattanooga, 2021-pr.

OPPONENT BATTING AVERAGE [Minimum 200 IP]

.229 - Brooke Parrott, Chattanooga, 2021-pr.

APPEARANCES

69 - Sierra Tufts, Furman, 2021-pr.

GAMES STARTED

62 - Sierra Tufts, Furman, 2021-pr.

COMPLETE GAMES

28 - Jayme Eilers, Western Carolina, 2020-pr.

SHUTOUTS

7 - Jayme Eilers, Western Carolina, 2020-pr.

INNINGS PITCHED

336.1 - Sierra Tufts, Furman, 2021-pr.

STRIKEOUTS

262 - Jayme Eilers, Western Carolina, 2020-pr.

STRIKEOUTS PER 7 INNINGS [Minimum 200 IP]

7.41 - Jayme Eilers (262 so, 247.2 ip, Western Carolina, 2020-pr.

WALKS PER 7 INNINGS [Minimum 200 IP]

1.01 - McKenzie Newcomb (31 bb, 215.0 ip, Samford, 2022-pr.

HITS ALLOWED PER 7 INNINGS [Minimum 200 IP]

5.93 - Brooke Parrott (215 h, 254.0 ip), Chattanooga, 2021-pr.

SoCON PLAYERS OF THE WEEK

Feb. 13	Delaney Cumbie, 5th, C, UNCG
Feb. 20	Riley Ludlam, Sr, C, Furman
Feb. 27	
March 6	
March 13	
March 20	
March 27	
April 3	
April 10	
April 17	
April 24	
May 1	
May 8	

SoCON PITCHERS OF THE WEEK

Feb. 13	Tessa Juett, So., Western Carolina
Feb. 20	Maddie Spell, R-So., UNCG
Feb. 27	
March 6	
March 13	
March 20	
March 27	
April 3	
April 10	
April 17	
April 24	
May 1	
May 8	

SoCON PLAYERS OF THE MONTH

February	
March	
April	
May	

SoCON PITCHERS OF THE MONTH

February	
March	
April	
May	

SoCON COACHING RECORDS

Coach, school	Career (yrs.)	School (yrs.)	SoCon (yrs.)
Cheryl Milligan, ETSU (int.)	541-217 (19th)	1-9 (1st)	0-0 (1st)
Stacey Johnson-Whitfield, Furman	26-38 (2nd)	Same	8-10 (2nd)
Lindsay Fico, Mercer	90-104 (5th)	16-40 (2nd)	7-11 (2nd)
Janelle Breneman, UNCG	461-437 (20th)	323-195 (11th)	104-61 (11th)
Kimball Cassidy, Samford	355-152-1 (13th)	34-19 (2nd)	15-3 (2nd)
Frank Reed, Chattanooga	1,171-583 (34th)	691-494 (23rd)	257-132 (23rd)
Jim Clift, Western Carolina	219-373 (12th)	Same	74-118 (12th)

Preseason predictions

Preseason Poll

Team (first-place votes)	Points
1. Samford (4)	33
2. UNCG (3)	31
3. Chattanooga	28
4. Furman	17
Western Carolina	17
6. Mercer	15
7. ETSU	6

Preseason Player of the Year

Emily Coltharp, Chattanooga, Sr.

Preseason Pitcher of the Year

McKenzie Newcomb, Samford, So.

Preseason All-SoCon First Team

P	McKenzie Newcomb, Samford, So.
P	Brooke Parrott, Chattanooga, Sr.
C	Delaney Cumbie, UNCG, 5th
IF	Rebeca Laudino, Mercer, Sr.
IF	Maycin Brown, UNCG, Sr.
IF	Emily Coltharp, Chattanooga, Sr.
IF	Bailey Huneycutt, Western Carolina, 5th
OF	Ashlee Lykins, Furman, Jr.
OF	Grace Loftin, UNCG, So.
OF	Brooklynn Brewington, Western Carolina, Sr.
DP	Riley Lambert, Western Carolina, Jr.

Preseason Second-Team All-SoCon

P	Sierra Tufts, Furman, Jr.
P	Jordyn Partain, Samford, So.
C	Riley Ludlam, Furman, Sr.
IF	Cameron Young, ETSU, So.
IF	Samantha Lagrama, UNCG, 5th
IF	Gwynnie Hornibrook, Samford, So.
IF	Kailey Snell, Chattanooga, Jr.
IF	Myra Twitty, Western Carolina, Gr.
OF	Caitlin Goldwait, Furman, So.
OF	Alyssa Woods, Mercer, Jr.
OF	Adison Keylon, Chattanooga, Jr.
DP	Kendall Forsythe, Chattanooga, Jr.



ETSU
(1-9, 0-0 SoCon)

F10	vs. Campbell [!]	L, 4-8
F11	vs. Miami (Ohio) [!]	L, 2-3
F11	at Charlotte [!]	L, 2-3
F12	vs. South Carolina [!]	CCD
F16	at South Carolina [^]	L, 2-9
F17	vs. West Kentucky [^]	L, 1-6
F17	vs. George Washington [^]	L, 2-4
F18	vs. Campbell [^]	L, 3-9
F21	at Radford	L, 1-7
F21	at Radford	L, 5-7
F23	at NC State [%]	W, 5-0
F24	vs. James Madison [%]	12:30 p.m.
F24	at NC State [%]	5:30 p.m.
F25	vs. Pennsylvania [%]	12:30 p.m.
F26	vs. Pennsylvania [%]	10 a.m.
F28	APP STATE	4 p.m.
M8	BALL STATE	TBA
M8	BALL STATE	TBA
M10	vs. Nebraska Omaha \$	4 p.m.
M11	vs. Nebraska Omaha \$	10 a.m.
M11	vs. SE Louisiana \$	12:30 p.m.
M12	at Mississippi State \$	2:30 p.m.
M14	MOREHEAD STATE	2 p.m.
M14	MOREHEAD STATE	4 p.m.
M17	EASTERN ILLINOIS	6 p.m.
M18	EASTERN ILLINOIS	Noon
M18	EASTERN ILLINOIS	2:30 p.m.
M25	at UNCG*	TBA
M25	at UNCG*	TBA
M26	at UNCG*	TBA
M28	at Tennessee	6 p.m.
A1	FURMAN*	TBA
A1	FURMAN*	TBA
A2	FURMAN*	TBA
A5	RADFORD	TBA
A5	RADFORD	TBA
A7	at Samford*	TBA
A7	at Samford*	TBA
A8	at Samford*	TBA
A11	at App State	TBA
A15	CHATTANOOGA*	TBA
A15	CHATTANOOGA*	TBA
A16	CHATTANOOGA*	TBA
A18	at Tennessee Tech	TBA
A29	at Western Carolina*	TBA
A29	at Western Carolina*	TBA
A30	at Western Carolina*	TBA
M6	MERCER*	TBA
M6	MERCER*	TBA
M7	MERCER*	TBA
M10-13	at SoCon Championship (Chattanooga, Tenn.)	

! - Charlotte Invitational (Charlotte, N.C.)
 ^ - Carolina Classic (Columbia, S.C.)
 % - Wolfpack Classic (Raleigh, N.C.)
 \$ - Bulldog Invitational (Starkville, Miss.)



Furman
(4-5, 0-0 SoCon)

F10	vs. Georgetown [!]	W, 3-2
F10	at Jacksonville [!]	L, 3-5
F11	vs. Georgetown [!]	CCD
F11	at North Florida [!]	CCD
F12	at North Florida [!]	CCD
F14	CLEMSON	L, 0-10
F17	SACRED HEART[!]	W, 10-2
F18	BINGHAMTON[^]	L, 5-9
F18	TOWSON[^]	L, 2-4
F19	BELLARMINE[^]	W, 5-1
F21	at Gardner-Webb	L, 10-12 (8 inn.)
F21	at Gardner-Webb	W, 11-4
F24	vs. Tulsa [%]	10 a.m.
F24	at South Alabama [%]	3 p.m.
F25	vs. Mississippi State [%]	3 p.m.
F26	vs. Louisiana Tech [%]	9 a.m.
F26	vs. Mississippi State [%]	11:15 a.m.
M3	vs. N.C. Central [!]	9 a.m.
M3	vs. Lehigh [!]	2 p.m.
M4	vs. Canisius [!]	9 a.m.
M4	at Campbell [!]	11:30 p.m.
M5	vs. Lehigh [!]	9 a.m.
M7	at Presbyterian	4 p.m.
M7	at Presbyterian	6 p.m.
M11	CHARLESTON SOUTHERN	1 p.m.
M11	CHARLESTON SOUTHERN	3 p.m.
M15	at Georgia	6:30 p.m.
M22	at South Carolina	3 p.m.
M22	at South Carolina	5:30 p.m.
M25	at Western Carolina*	1 p.m.
M25	at Western Carolina*	3 p.m.
M26	at Western Carolina*	1 p.m.
M29	USC UPSTATE	4 p.m.
M29	USC UPSTATE	6 p.m.
A1	at ETSU*	1 p.m.
A1	at ETSU*	3 p.m.
A2	at ETSU*	1 p.m.
A5	at Clemson	7 p.m.
A7	UNCG*	1 p.m.
A7	UNCG*	3 p.m.
A8	UNCG*	1 p.m.
A12	at College of Charleston	3 p.m.
A12	at College of Charleston	5 p.m.
A15	MERCER*	1 p.m.
A15	MERCER*	3 p.m.
A16	MERCER*	1 p.m.
A19	QUEENS	4 p.m.
A19	QUEENS	6 p.m.
A22	at Samford*	2 p.m.
A22	at Samford*	4 p.m.
A23	at Samford*	2 p.m.
A29	CHATTANOOGA*	1 p.m.
A29	CHATTANOOGA*	3 p.m.
A30	CHATTANOOGA*	1 p.m.
M3	at North Carolina	1 p.m.
M10-13	at SoCon Championship (Chattanooga, Tenn.)	

! - River City Leadoff (Jacksonville, Fla.)
 ^ - Furman Invitational (Greenville, S.C.)
 % - South Alabama Tournament (Mobile, Ala.)
 \$ - Campbell Invitational (Buies Creek, N.C.)



Mercer
(4-6, 0-0 SoCon)

F10	HAMPTON[!]	W, 7-0
F11	FLORIDA A&M[!]	CCD
F12	HAMPTON[!]	L, 0-10
F12	FLORIDA A&M[!]	L, 1-5
F15	at Kennesaw State	L, 0-7
F17	vs. Monmouth [^]	W, 2-0
F17	at Stetson [^]	L, 1-3
F18	vs. Monmouth [^]	W, 10-4
F18	at Stetson [^]	L, 0-8
F19	vs. Fairfield [^]	W, 5-3
F22	TROY	L, 3-8
F24	SOUTH CAROLINA[%]	6:30 p.m.
F25	BELMONT[%]	1:30 p.m.
F25	JACKSONVILLE[%]	TBA
F28	NORTHERN IOWA	6 p.m.
M3	vs. Longwood [!]	11 a.m.
M3	vs. Robert Morris [!]	1:30 p.m.
M4	vs. Longwood [!]	4 p.m.
M4	vs. Robert Morris [!]	6:30 p.m.
M5	at Alabama [!]	1 p.m.
M8	at Clemson	6 p.m.
M10	vs. Rutgers [@]	10:30 a.m.
M10	at Florida [@]	3:30 p.m.
M11	at Florida [@]	11 a.m.
M11	vs. Rutgers [@]	4 p.m.
M12	vs. Louisiana	9:30 a.m.
M15	ALABAMA STATE	TBA
M22	vs. Georgia State	3 p.m.
M22	vs. Georgia State	5 p.m.
M25	at Samford*	1 p.m.
M25	at Samford*	3 p.m.
M26	at Samford*	1 p.m.
M29	at Florida A&M	4 p.m.
A1	CHATTANOOGA*	2 p.m.
A1	CHATTANOOGA*	4 p.m.
A2	CHATTANOOGA*	1 p.m.
A4	GEORGIA TECH	6 p.m.
A6	at Tennessee	TBA
A7	vs. Baylor	TBA
A15	at Furman*	1 p.m.
A15	at Furman*	3 p.m.
A16	at Furman*	1 p.m.
A19	at Georgia Southern	4 p.m.
A19	at Georgia Southern	6 p.m.
A22	WESTERN CAROLINA*	2 p.m.
A22	WESTERN CAROLINA*	4 p.m.
A23	WESTERN CAROLINA*	1 p.m.
A26	at Georgia	5 p.m.
A29	UNCG*	2 p.m.
A29	UNCG*	4 p.m.
A30	UNCG*	1 p.m.
M6	at ETSU*	1 p.m.
M7	at ETSU*	3 p.m.
M7	at ETSU*	1 p.m.
M10-13	at SoCon Championship (Chattanooga, Tenn.)	

! - Heart of Georgia Classic (Macon, Ga.)
 ^ - Hatter Classic (DeLand, Fla.)
 % - Mercer Invitational (Macon, Ga.)
 \$ - Easton Crimson Classic (Tuscaloosa, Ala.)
 @ - Florida Tournament (Gainesville, Fla.)



UNCG
(7-4, 0-0 SoCon)

F10	vs. LIU [!]	W, 6-2
F10	vs. Binghamton [!]	W, 8-0
F11	at Florida Gulf Coast [!]	L, 3-4
F11	vs. Southern Illinois [!]	L, 6-9
F12	vs. Binghamton [!]	W, 10-1
F16	VIRGINIA	L, 2-6
F18	MOREHEAD STATE[^]	W, 8-0
F18	UNCW[^]	W, 4-3
F19	MOREHEAD STATE[^]	W, 7-2
F19	UNCW[^]	W, 9-1
F22	CAMPBELL	L, 1-3
F24	UCONN[%]	4 p.m.
F24	DELAWARE[%]	6:30 p.m.
F25	INDIANA[%]	1:30 p.m.
F25	TBD[%]	TBA
F26	TBD[%]	TBA
M3	ELON	1 p.m.
M4	ELON	3:30 p.m.
M5	at Elon	1 p.m.
M8	at Charleston Southern	3 p.m.
M8	at Charleston Southern	5 p.m.
M10	at Clemson [§]	2:30 p.m.
M11	vs. Jacksonville [§]	10 a.m.
M11	vs. Bryant [§]	12:30 p.m.
M12	TBD[§]	TBA
M15	NOTRE DAME	5 p.m.
M17	ARMY[@]	4 p.m.
M18	GARDNER-WEBB[@]	1:30 p.m.
M18	ARMY[@]	4 p.m.
M19	GARDNER-WEBB[@]	1:30 p.m.
M23	TOWSON	4 p.m.
M25	ETSU[*]	1 p.m.
M25	ETSU[*]	3 p.m.
M26	ETSU[*]	1 p.m.
M29	at Charlotte	5 p.m.
A4	NORTH CAROLINA	5 p.m.
A7	at Furman [*]	1 p.m.
A7	at Furman [*]	3 p.m.
A8	at Furman [*]	1 p.m.
A12	at Radford	3 p.m.
A12	at Radford	5 p.m.
A15	SAMFORD[*]	1 p.m.
A15	SAMFORD[*]	3 p.m.
A16	SAMFORD[*]	1 p.m.
A19	at Duke	5 p.m.
A22	at Chattanooga [*]	1 p.m.
A22	at Chattanooga [*]	3 p.m.
A23	at Chattanooga [*]	1 p.m.
A29	at Mercer [*]	1 p.m.
A29	at Mercer [*]	3 p.m.
A30	at Mercer [*]	1 p.m.
M2	CHARLOTTE	6 p.m.
M6	WESTERN CAROLINA[*]	1 p.m.
M6	WESTERN CAROLINA[*]	3 p.m.
M7	WESTERN CAROLINA[*]	1 p.m.
M10-13	at SoCon Championship (Chattanooga, Tenn.)	

! - FGCU Kickoff Classic (Fort Myers, Fla.)
 ^ - Spiro Classic (Greensboro, N.C.)
 % - UNCG Invitational (Greensboro, N.C.)
 § - Clemson Classic (Clemson, S.C.)
 @ - Spartan Classic (Greensboro, N.C.)



Samford
(2-7, 0-0 SoCon)

F10	vs. Seton Hall [!]	W, 1-0
F11	vs. Seton Hall [!]	CCD
F12	at Southern Miss [!]	L, 0-3
F12	at Southern Miss [!]	L, 2-3
F17	BALL STATE[@]	L, 3-5
F17	BALL STATE[@]	W, 8-7 (9 inn.)
F18	BELMONT[@]	L, 3-4(10 inn.)
F18	LINDENWOOD[@]	L, 0-1
F19	at UAB [@]	L, 2-3
F22	at Alabama	L, 2-3
F24	SOUTHERN INDIANA[^]	4 p.m.
F24	IUPUI[^]	6 p.m.
F25	NORTH ALABAMA[^]	11 a.m.
F25	IUPUI[^]	4 p.m.
F26	SOUTHERN INDIANA[^]	10 a.m.
F28	at Kennesaw State	5 p.m.
M3	vs. Ball State [%]	10:30 a.m.
M3	vs. Stetson [%]	1 p.m.
M4	vs. Stetson [%]	10:30 a.m.
M4	at Georgia [%]	3:30 p.m.
M5	at Georgia [%]	1 p.m.
M11	vs. Western Michigan [§]	Noon
M11	at Jacksonville State [§]	2:30 p.m.
M12	vs. Western Michigan [§]	10 a.m.
M12	at Jacksonville State [§]	12:30 p.m.
M14	ALABAMA STATE	6 p.m.
M16	vs. Purdue ⁺	6 p.m.
M17	vs. St. Thomas ⁺	10:30 a.m.
M17	at Ole Miss ⁺	3:30 p.m.
M18	vs. St. Thomas ⁺	1 p.m.
M18	at Ole Miss ⁺	6 p.m.
M22	at North Alabama	TBA
M25	MERCER[*]	2 p.m.
M25	MERCER[*]	4 p.m.
M26	MERCER[*]	2 p.m.
M29	AUBURN	6 p.m.
A1	at Western Carolina [*]	1 p.m.
A1	at Western Carolina [*]	3 p.m.
A2	at Western Carolina [*]	1 p.m.
A7	ETSU[*]	2 p.m.
A7	ETSU[*]	4 p.m.
A8	ETSU[*]	2 p.m.
A11	ALABAMA	6 p.m.
A15	at UNCG [*]	1 p.m.
A15	at UNCG [*]	3 p.m.
A16	at UNCG [*]	1 p.m.
A19	UAB	6 p.m.
A22	FURMAN[*]	2 p.m.
A22	FURMAN[*]	4 p.m.
A23	FURMAN[*]	2 p.m.
A26	KENNESAW STATE	5 p.m.
M2	JACKSONVILLE STATE	TBA
M6	at Chattanooga [*]	1 p.m.
M6	at Chattanooga [*]	3 p.m.
M7	at Chattanooga [*]	1 p.m.
M10-13	at SoCon Championship (Chattanooga, Tenn.)	

! - USM Tournament (Hattiesburg, Miss.)
 @ - UAB Classic (Birmingham, Ala.)
 ^ - Bulldog Classic (Birmingham, Ala.)
 % - UGA Tournament (Athens, Ga.)
 § - JSU Invitational (Jacksonville, Ala.)
 + - Ole Miss Tournament (Oxford, Miss.)



Chattanooga
(4-2, 0-0 SoCon)

F10	vs. James Madison [!]	W, 4-3
F12	at College of Charleston [!]	CCD
F17	MARSHALL[^]	CCD
F17	INDIANA STATE[^]	CCD
F18	MARSHALL[^]	W, 7-4
F18	WESTERN ILLINOIS[^]	W, 5-4
F19	MAINE[^]	L, 4-5
F19	WESTERN ILLINOIS[^]	L, 2-4
F22	TENNESSEE STATE	W, 3-2 (9 inn.)
F24	AKRON[%]	3 p.m.
F24	S.E. MISSOURI STATE[%]	5:30 p.m.
F25	EASTERN ILLINOIS[%]	12:30 p.m.
F25	UNLV[%]	3 p.m.
F26	WESTERN MICHIGAN[%]	11 a.m.
F26	MEMPHIS[%]	1:30 p.m.
M3	vs. Sacred Heart [§]	11 a.m.
M3	vs. Harvard [§]	1 p.m.
M4	at Gardner-Webb [§]	5 p.m.
M4	vs. Sacred Heart [§]	7 p.m.
M5	vs. Detroit [§]	Noon
M10	vs. Iowa [@]	11 a.m.
M10	vs. New Mexico State [@]	1:30 p.m.
M11	vs. Hartford [@]	1:30 p.m.
M11	vs. Sacred Heart [@]	4 p.m.
M12	vs. Bucknell [@]	9 a.m.
M15	vs. Princeton	10 a.m.
M15	vs. Iona	12:30 p.m.
M16	FLORIDA GULF COAST	1 p.m.
M17	FLORIDA GULF COAST	1 p.m.
M17	FLORIDA GULF COAST	3 p.m.
M24	VIRGINIA TECH	1 p.m.
M25	VIRGINIA TECH	Noon
M25	VIRGINIA TECH	2 p.m.
M29	LIPSCOMB	6 p.m.
A1	at Mercer [*]	1 p.m.
A1	at Mercer [*]	3 p.m.
A2	at Mercer [*]	1 p.m.
A5	at Georgia State	3 p.m.
A7	WESTERN CAROLINA[*]	3 p.m.
A7	WESTERN CAROLINA[*]	5 p.m.
A8	WESTERN CAROLINA[*]	Noon
A15	ETSU[*]	1 p.m.
A15	ETSU[*]	3 p.m.
A16	ETSU[*]	1 p.m.
A19	at Austin Peay	5 p.m.
A22	UNCG[*]	1 p.m.
A22	UNCG[*]	3 p.m.
A23	UNCG[*]	2 p.m.
A29	at Furman [*]	1 p.m.
A29	at Furman [*]	3 p.m.
A30	at Furman [*]	1 p.m.
M6	SAMFORD[*]	1 p.m.
M6	SAMFORD[*]	3 p.m.
M7	SAMFORD[*]	2 p.m.
M10-13	at SoCon Championship (Chattanooga, Tenn.)	

! - Charleston Invitational (Charleston, S.C.)
 ^ - Chattanooga Challenge (Chattanooga, Tenn.)
 % - Frost Challenge (Chattanooga, Tenn.)
 § - Gardner-Webb Tournament (Boiling Springs, N.C.)
 @ - Madeira Beach Invitational (Madeira Beach, Fla.)



Western Carolina
(2-2, 0-0 SoCon)

F10	vs. Tennessee Tech [!]	W, 1-0 (8 inn.)
F10	at Alabama State [!]	W, 1-0
F11	vs. UT Martin [!]	CCD
F11	at Alabama State [!]	CCD
F12	vs. UT Martin [!]	CCD
F22	at Presbyterian	L, 2-5
F22	at Presbyterian	L, 5-6
F24	vs. Northern Illinois [^]	10 a.m.
F24	vs. Tennessee State [^]	12:30 p.m.
F25	vs. Tennessee State [^]	10 a.m.
F25	at Georgia State [^]	3 p.m.
F26	at Georgia State [^]	10 a.m.
M1	at USC Upstate	2 p.m.
M1	at USC Upstate	4 p.m.
M8	at UC Riverside	3 p.m.
M8	at UC Riverside	5 p.m.
M10	vs. Yale [%]	1 p.m.
M10	vs. Michigan State [%]	6 p.m.
M11	vs. Yale [%]	1 p.m.
M11	at San Diego [%]	6 p.m.
M12	at San Diego [%]	Noon
M15	at Georgia State	Noon
M15	at Georgia State	2 p.m.
M21	at Gardner-Webb	3 p.m.
M21	at Gardner-Webb	5 p.m.
M25	FURMAN*	1 p.m.
M25	FURMAN*	3 p.m.
M26	FURMAN*	1 p.m.
M29	RADFORD	3 p.m.
M29	RADFORD	5 p.m.
A1	SAMFORD*	1 p.m.
A1	SAMFORD*	3 p.m.
A2	SAMFORD*	1 p.m.
A7	at Chattanooga [*]	1 p.m.
A7	at Chattanooga [*]	3 p.m.
A8	at Chattanooga [*]	1 p.m.
A18	APP STATE	4 p.m.
A22	at Mercer [*]	1 p.m.
A22	at Mercer [*]	3 p.m.
A23	at Mercer [*]	1 p.m.
A26	N.C. CENTRAL	3 p.m.
A26	N.C. CENTRAL	5 p.m.
A29	ETSU*	1 p.m.
A29	ETSU*	3 p.m.
A30	ETSU*	1 p.m.
M6	at UNCG [*]	1 p.m.
M6	at UNCG [*]	3 p.m.
M7	at UNCG [*]	1 p.m.
M10-13	at SoCon Championship (Chattanooga, Tenn.)	

! - Stinger Classic (Montgomery, Ala.)

^ - Panther Invitational at GSU (Atlanta, Ga.)

% - San Diego Classic (San Diego, Calif.)

The Automated ScoreBook
SoCon Batting Leaders (as of Feb 24, 2023)
(All games)

Hitting minimums - 1 Games 50% of Games 2.0 AB/Game 2.5 TPA/Game
Pitching minimums - 1 Games 1.0 IP/Game

Batting avg		Slugging pct		On base pct	
1. Furman	.292	1. UNCG	.493	1. UNCG	.397
2. UNCG	.279	2. Furman	.454	2. Mercer	.353
3. ETSU	.270	3. ETSU	.365	3. Furman	.353
4. Mercer	.264	4. Mercer	.353	4. ETSU	.344
5. Samford	.235	5. Chattanooga	.352	5. Samford	.303
6. Chattanooga	.219	6. Samford	.333	6. Western Carolina	.303
7. Western Carolina	.194	7. Western Carolina	.233	7. Chattanooga	.291
Runs scored		Hits		Runs batted in	
1. UNCG	64	1. UNCG	76	1. UNCG	61
2. Furman	49	2. ETSU	74	2. Furman	43
3. Mercer	26	3. Furman	70	3. Mercer	25
ETSU	26	4. Samford	57	4. ETSU	22
5. Samford	21	5. Mercer	53	5. Samford	18
6. Chattanooga	13	6. Chattanooga	23	6. Chattanooga	10
7. Western Carolina	9	7. Western Carolina	20	7. Western Carolina	7
Doubles		Triples		Home runs	
1. UNCG	19	1. UNCG	3	1. UNCG	11
2. Furman	12	Furman	3	2. Furman	7
Samford	12	3. Chattanooga	1	3. ETSU	5
4. ETSU	9	ETSU	1	4. Samford	4
5. Chattanooga	6			Mercer	4
Mercer	6			6. Chattanooga	2
7. Western Carolina	4				
Total bases		Total plate appearances		At bats	
1. UNCG	134	1. UNCG	330	1. ETSU	274
2. Furman	109	2. ETSU	310	2. UNCG	272
3. ETSU	100	3. Samford	273	3. Samford	243
4. Samford	81	4. Furman	272	4. Furman	240
5. Mercer	71	5. Mercer	240	5. Mercer	201
6. Chattanooga	37	6. Western Carolina	120	6. Chattanooga	105
7. Western Carolina	24	Chattanooga	120	7. Western Carolina	103
Walks		Hit by pitch		Strikeouts	
1. UNCG	47	1. Mercer	9	1. Samford	56
2. ETSU	27	2. UNCG	6	2. UNCG	51
3. Samford	22	3. ETSU	5	3. Mercer	46
4. Furman	21	4. Furman	4	4. ETSU	37
5. Mercer	20	5. Western Carolina	3	5. Furman	29
6. Western Carolina	13	6. Samford	2	6. Chattanooga	27
7. Chattanooga	10	7. Chattanooga	1	7. Western Carolina	23
Sac bunts		Sac flies		Stolen bases	
1. Mercer	8	1. Furman	4	1. Furman	16
2. Samford	6	2. ETSU	2	2. ETSU	9
3. UNCG	5	Mercer	2	Western Carolina	9
4. Furman	3	4. Chattanooga	1	4. Mercer	5
Chattanooga	3			5. Samford	3
6. ETSU	2			Chattanooga	3
7. Western Carolina	1			7. UNCG	1
Caught stealing		Steal attempts		Grounded into DP	
1. Western Carolina	3	1. Furman	19	1. Samford	6
Furman	3	2. Western Carolina	12	2. ETSU	5
3. Chattanooga	2	3. ETSU	10	3. Furman	1
4. UNCG	1	4. Mercer	6		
Samford	1	5. Chattanooga	5		
ETSU	1	6. Samford	4		
Mercer	1	7. UNCG	2		

The Automated ScoreBook
SoCon Pitching Leaders (as of Feb 24, 2023)
(All games)

Hitting minimums - 1 Games 50% of Games 2.0 AB/Game 2.5 TPA/Game
Pitching minimums - 1 Games 1.0 IP/Game

Earned run avg		Opposing bat avg		Innings pitched	
1. Samford	2.27	1. Chattanooga	.229	1. UNCG	69.0
2. UNCG	2.33	2. UNCG	.230	2. Samford	64.2
Chattanooga	2.33	3. Western Carolina	.235	3. ETSU	62.1
4. Western Carolina	2.85	4. Furman	.264	4. Furman	60.0
5. Furman	3.85	5. Samford	.267	5. Mercer	52.1
6. ETSU	4.83	6. Mercer	.272	6. Chattanooga	30.0
7. Mercer	5.22	7. ETSU	.309	7. Western Carolina	27.0
Batters struck out		Batters SO out looking		Wins	
1. UNCG	62	1. Samford	13	1. UNCG	7
2. Samford	55	2. Mercer	12	2. Furman	4
3. Furman	46	3. ETSU	11	3. Western Carolina	2
4. ETSU	38	Furman	11	Chattanooga	2
5. Mercer	35	UNCG	11	Mercer	2
6. Western Carolina	26	6. Western Carolina	5	Samford	2
7. Chattanooga	17	7. Chattanooga	4	7. ETSU	1
Losses		Saves		Runners picked off	
1. ETSU	9	1. Mercer	1	1. ETSU	1
2. Samford	7				
3. Furman	5				
Mercer	5				
5. UNCG	4				
6. Western Carolina	2				
Chattanooga	2				
Sac bunts allowed		Sac flies allowed		Hits allowed	
1. Samford	10	1. ETSU	5	1. Western Carolina	24
2. Mercer	7	2. UNCG	4	2. Chattanooga	25
3. Furman	5	3. Chattanooga	2	3. Mercer	58
UNCG	5	Samford	2	4. UNCG	59
5. Chattanooga	4	5. Mercer	1	5. Samford	66
6. ETSU	3	Furman	1	6. Furman	67
7. Western Carolina	2			7. ETSU	77
Runs allowed		Earned runs allowed		Walks allowed	
1. Western Carolina	11	1. Chattanooga	10	1. Western Carolina	6
2. Chattanooga	14	2. Western Carolina	11	2. Chattanooga	10
3. Samford	29	3. Samford	21	3. Samford	14
4. UNCG	31	4. UNCG	23	4. UNCG	16
5. Mercer	45	5. Furman	33	5. Mercer	27
6. Furman	49	6. Mercer	39	Furman	27
7. ETSU	61	7. ETSU	43	7. ETSU	48
Doubles allowed		Triples allowed		Home runs allowed	
1. Chattanooga	4	1. Mercer	0	1. Western Carolina	0
2. Furman	5	UNCG	0	2. Chattanooga	1
3. Western Carolina	6	3. Western Carolina	1	3. Samford	3
4. Samford	11	Samford	1	4. UNCG	4
5. Mercer	13	ETSU	1	5. ETSU	5
6. UNCG	14	Furman	1	6. Furman	6
7. ETSU	15	Chattanooga	1	7. Mercer	7
Wild pitches		Balks		Hit batters	
1. Samford	11			1. ETSU	11
2. ETSU	7			2. Chattanooga	7
3. Chattanooga	5			UNCG	7
4. Furman	4			4. Furman	5
5. UNCG	2			5. Mercer	2
Mercer	2			6. Samford	1

Intentional BB allowed

The Automated ScoreBook
SoCon Fielding Leaders (as of Feb 24, 2023)
(All games)

Hitting minimums - 1 Games 50% of Games
Pitching minimums - 1 Games 1.0 IP/Game

Fielding pct		Chances		Putouts	
1. Western Carolina	.991	1. UNCG	280	1. UNCG	207
2. Chattanooga	.977	2. Samford	279	2. Samford	194
3. Samford	.961	3. Furman	269	3. ETSU	187
4. UNCG	.957	4. ETSU	246	4. Furman	180
5. ETSU	.947	5. Mercer	214	5. Mercer	157
6. Furman	.929	6. Chattanooga	130	6. Chattanooga	90
7. Mercer	.925	7. Western Carolina	115	7. Western Carolina	81
Assists		Errors		Fielding double plays	
1. Samford	74	1. Furman	19	1. UNCG	5
2. Furman	70	2. Mercer	16	2. Mercer	3
3. UNCG	61	3. ETSU	13	Samford	3
4. ETSU	46	4. UNCG	12	4. ETSU	2
5. Mercer	41	5. Samford	11	5. Western Carolina	1
6. Chattanooga	37	6. Chattanooga	3	Chattanooga	1
7. Western Carolina	33	7. Western Carolina	1	Furman	1
Stolen bases against		Caught stealing by		Steal attempts against	
1. UNCG	16	1. Samford	6	1. Samford	20
2. Samford	14	2. ETSU	5	2. ETSU	18
3. ETSU	13	3. Western Carolina	2	UNCG	18
4. Furman	11	UNCG	2	4. Furman	12
5. Mercer	7	5. Furman	1	5. Mercer	8
6. Chattanooga	6	Mercer	1	6. Chattanooga	6
7. Western Carolina	2			7. Western Carolina	4
Passed balls		Catchers interference			
1. ETSU	4				
2. Chattanooga	2				
Samford	2				
4. Mercer	1				
UNCG	1				

The Automated ScoreBook
SoCon Batting Leaders (as of Feb 24, 2023)
(All games)

Hitting minimums - 1 Games 50% of Games 2.0 AB/Game 2.5 TPA/Game
Pitching minimums - 1 Games 1.0 IP/Game

Batting avg		Slugging pct		On base pct	
1. Samantha Reelee-WCU	.444	1. Maycin Brown-UNCG	.848	1. Samantha Reelee-WCU	.583
2. Rebeca Laudino-MER	.440	2. Riley Ludlam-FUR	.846	2. Delaney Cumbie-UNCG	.561
3. Riley Ludlam-FUR	.423	3. Delaney Cumbie-UNCG	.806	3. Rebeca Laudino-MER	.533
4. Delaney Cumbie-UNCG	.419	4. Sara Muir-ETSU	.793	4. Brooklynn Maxwell-UNCG	.500
5. Kaili Phillips-UTC	.417	5. Sylvia Burroughs-FUR	.750	Hana Hashioka-FUR	.500
6. Hana Hashioka-FUR	.391	6. Kaili Phillips-UTC	.667	Kaili Phillips-UTC	.500
7. Sara Muir-ETSU	.379	Samantha Reelee-WCU	.667	7. Samantha Lagrama-UNCG	.471
8. Brooklynn Maxwell-UNCG	.375	8. Grier Bruce-SAM	.655	8. Ansley Yantis-SAM	.464
Ashlee Lykins-FUR	.375	9. Kiley Perry-FUR	.607	9. Sara Muir-ETSU	.459
10. Ainsley Yoshizumi-FUR	.360	Logan Champion-SAM	.607	10. Ainsley Yoshizumi-FUR	.448
Runs scored		Hits		Runs batted in	
1. Delaney Cumbie-UNCG	12	1. Delaney Cumbie-UNCG	13	1. Maycin Brown-UNCG	15
2. Maycin Brown-UNCG	9	2. Ashlee Lykins-FUR	12	2. Riley Ludlam-FUR	13
Ainsley Yoshizumi-FUR	9	Brooklynn Maxwell-UNCG	12	3. Sylvia Burroughs-FUR	9
Ashlee Lykins-FUR	9	4. Riley Nayadley-ETSU	11	4. Brooklynn Maxwell-UNCG	8
5. Grace Loftin-UNCG	8	Sara Muir-ETSU	11	Grace Loftin-UNCG	8
Brooklynn Maxwell-UNCG	8	Riley Ludlam-FUR	11	Sara Muir-ETSU	8
Hana Hashioka-FUR	8	Rebeca Laudino-MER	11	7. Kiley Perry-FUR	7
8. Blayke Batten-UNCG	6	8. 4 tied at.....	10	Delaney Cumbie-UNCG	7
Jessie Shipley-UNCG	6			9. 4 tied at.....	6
10. 2 tied at.....	5				
Doubles		Triples		Home runs	
1. Riley Ludlam-FUR	5	1. Ainsley Yoshizumi-FUR	2	1. Maycin Brown-UNCG	5
Brooklynn Maxwell-UNCG	5	2. Olivia Lipari-UTC	1	2. Sara Muir-ETSU	4
3. Blayke Batten-UNCG	4	MaKayla Strickland-ETSU	1	3. Delaney Cumbie-UNCG	3
4. Grace Loftin-UNCG	3	Hana Hashioka-FUR	1	4. Tory Hedgecock-MER	2
Delaney Cumbie-UNCG	3	Brooklynn Maxwell-UNCG	1	Logan Champion-SAM	2
Kaili Phillips-UTC	3	Ashley Gontram-UNCG	1	Riley Ludlam-FUR	2
Grier Bruce-SAM	3	Maycin Brown-UNCG	1	Grier Bruce-SAM	2
8. 12 tied at.....	2			Sylvia Burroughs-FUR	2
				Kiley Perry-FUR	2
				10. 9 tied at.....	1
Total bases		Walks		Hit by pitch	
1. Maycin Brown-UNCG	28	1. Samantha Lagrama-UNCG	10	1. Rebeca Laudino-MER	4
2. Delaney Cumbie-UNCG	25	2. Delaney Cumbie-UNCG	8	2. Lillian Wilkerson-MER	3
3. Sara Muir-ETSU	23	Jessie Shipley-UNCG	8	Hana Hashioka-FUR	3
4. Riley Ludlam-FUR	22	Brooklynn Maxwell-UNCG	8	4. MaKayla Strickland-ETSU	2
5. Brooklynn Maxwell-UNCG	19	5. Sara Muir-ETSU	6	Delaney Cumbie-UNCG	2
Grier Bruce-SAM	19	6. Ansley Yantis-SAM	5	Sophie Sumner-MER	2
7. Kiley Perry-FUR	17	7. Maycin Brown-UNCG	4	Ansley Yantis-SAM	2
Logan Champion-SAM	17	Ainsley Yoshizumi-FUR	4	8. 12 tied at.....	1
9. Riley Nayadley-ETSU	16	Olivia Lipari-UTC	4		
10. 2 tied at.....	15	10. 8 tied at.....	3		
Sac bunts		Sac flies		Stolen bases	
1. Bailey Ledvina-MER	3	1. Sara Muir-ETSU	2	1. Hana Hashioka-FUR	5
2. Caitlin Goldwait-FUR	2	Riley Ludlam-FUR	2	2. Kemiah Michel-ETSU	4
Lillian Wilkerson-MER	2	3. Adison Keylon-UTC	1	3. Brooklynn Brewington-WCU	3
Merritt Cahoon-SAM	2	Kiley Perry-FUR	1	Caitlin Goldwait-FUR	3
Jasmine Sanchez-ETSU	2	Grace Prom-MER	1	Rebeca Laudino-MER	3
Ansley Yantis-SAM	2	Caitlin Goldwait-FUR	1	6. 6 tied at.....	2
Jaden Cheek-UNCG	2	Katie Helm-MER	1		
8. 13 tied at.....	1				

Total plate appearances	
1. Delaney Cumbie-UNCG	41
2. Brooklynn Maxwell-UNCG	40
3. Maycin Brown-UNCG	38
4. Sara Muir-ETSU	37
Riley Nayadley-ETSU	37
6. Blayke Batten-UNCG	36
7. Samantha Lagrama-UNCG	35
Grace Loftin-UNCG	35
Cameron Young-ETSU	35
Ashlee Lykins-FUR	35

Strikeouts	
1. Sarah Squillace-SAM	10
2. Lindsey Nelson-SAM	9
3. Alyssa Woods-MER	8
4. Kiley Perry-FUR	6
Blayke Batten-UNCG	6
Tory Hedgecock-MER	6
Maycin Brown-UNCG	6
Jessie Shipley-UNCG	6
Rebeca Laudino-MER	6
10. 7 tied at.....	5

At bats	
1. Riley Nayadley-ETSU	35
2. Cameron Young-ETSU	33
Grace Loftin-UNCG	33
Maycin Brown-UNCG	33
5. Brooklynn Maxwell-UNCG	32
Blayke Batten-UNCG	32
Ashlee Lykins-FUR	32
8. Delaney Cumbie-UNCG	31
9. 3 tied at.....	29

Caught stealing	
1. 12 tied at.....	1

Steal attempts	
1. Hana Hashioka-FUR	6
2. Kemiah Michel-ETSU	5
3. Rebeca Laudino-MER	4
4. Brooklynn Brewington-WCU	3
Ainsley Yoshizumi-FUR	3
Hannah Poole-FUR	3
Caitlin Goldwait-FUR	3
Claudia Riddle-WCU	3
9. 4 tied at.....	2

Grounded into DP	
1. Merritt Cahoon-SAM	3
2. Alex Rose Molinar-FUR	1
Faith Adams-ETSU	1
Chloe Poss-SAM	1
Gwynnie Hornibrook-SAM	1
Jasmine Sanchez-ETSU	1
Makenzie Henderson-ETSU	1
Kaylee Higgins-ETSU	1
Cameron Young-ETSU	1
Grier Bruce-SAM	1

The Automated ScoreBook
SoCon Pitching Leaders (as of Feb 24, 2023)
(All games)

Hitting minimums - 1 Games 50% of Games 2.0 AB/Game 2.5 TPA/Game
Pitching minimums - 1 Games 1.0 IP/Game

Earned run avg		Opposing bat avg		Innings pitched	
1. Tessa Juett-WCU	0.00	1. Tessa Juett-WCU	.091	1. Sierra Tufts-FUR	29.1
2. Maddie Spell-UNCG	0.88	2. Taylor Long-UTC	.167	2. McKenzie Newcomb-SAM	26.2
3. Salem Ward-UNCG	1.05	3. Salem Ward-UNCG	.178	3. Katie Rearley-MER	26.1
4. Taylor Long-UTC	1.50	4. Maddie Spell-UNCG	.183	4. Jorde Chartrand-UNCG	24.0
5. McKenzie Newcomb-SAM	1.84	5. Jorde Chartrand-UNCG	.193	5. Brianna Bailey-ETSU	22.1
6. Lainey Baker-SAM	2.33	6. Emme Buzhardt-FUR	.213	6. Grace Taylor-MER	19.0
7. Brooke Parrott-UTC	2.62	7. Sierra Tufts-FUR	.231	7. Maddie Spell-UNCG	16.0
8. Emme Buzhardt-FUR	3.00	8. Brooke Parrott-UTC	.250	8. Jordyn Partain-SAM	15.2
9. Jordyn Partain-SAM	3.13	9. Taylor Norton-WCU	.255	9. Rhyann Jones-UNCG	15.1
10. Jorde Chartrand-UNCG	3.21	10. Brianna Bailey-ETSU	.256	10. Lainey Baker-SAM	15.0
Batters struck out		Batters SO out looking		Wins	
1. Jorde Chartrand-UNCG	29	1. Brianna Bailey-ETSU	8	1. Sierra Tufts-FUR	3
2. McKenzie Newcomb-SAM	27	2. Sierra Tufts-FUR	7	2. Maddie Spell-UNCG	2
3. Sierra Tufts-FUR	23	Katie Rearley-MER	7	Rhyann Jones-UNCG	2
4. Brianna Bailey-ETSU	20	4. Lainey Baker-SAM	6	Jorde Chartrand-UNCG	2
5. Katie Rearley-MER	18	McKenzie Newcomb-SAM	6	5. 11 tied at.....	1
6. Lauralee Scott-FUR	15	6. Jorde Chartrand-UNCG	5		
7. Salem Ward-UNCG	12	7. Grace Taylor-MER	4		
Lainey Baker-SAM	12	8. Tessa Juett-WCU	3		
Grace Taylor-MER	12	9. 7 tied at.....	2		
10. Maddie Spell-UNCG	11				
Saves		Appearances		Games started	
1. Katie Rearley-MER	1	1. Katie Rearley-MER	7	1. Brianna Bailey-ETSU	5
		Grace Taylor-MER	7	Katie Rearley-MER	5
		Lainey Baker-SAM	7	Sierra Tufts-FUR	5
		4. Jorde Chartrand-UNCG	6	4. Rhyann Jones-UNCG	4
		Jordyn Partain-SAM	6	5. Maddie Spell-UNCG	3
		Brianna Bailey-ETSU	6	Lauralee Scott-FUR	3
		McKenzie Newcomb-SAM	6	Grace Taylor-MER	3
		8. Sierra Tufts-FUR	5	Jorde Chartrand-UNCG	3
		9. 4 tied at.....	4	Lainey Baker-SAM	3
				10. 6 tied at.....	2
Games finished		Games in relief		Sac bunts allowed	
1. McKenzie Newcomb-SAM	4	1. Lainey Baker-SAM	4	1. Grace Taylor-MER	5
Grace Taylor-MER	4	McKenzie Newcomb-SAM	4	Jordyn Partain-SAM	5
3. Lainey Baker-SAM	3	Grace Taylor-MER	4	3. Sierra Tufts-FUR	4
4. 9 tied at.....	2	Allison Farr-ETSU	4	4. Rhyann Jones-UNCG	3
		Jordyn Partain-SAM	4	McKenzie Newcomb-SAM	3
		6. Jorde Chartrand-UNCG	3	6. Taylor Long-UTC	2
		7. 10 tied at.....	2	Makayla Cooper-ETSU	2
				Lainey Baker-SAM	2
				Katie Rearley-MER	2
				Jorde Chartrand-UNCG	2
Sac flies allowed		Losses		Runners picked off	
1. Makayla Cooper-ETSU	3	1. Jorde Chartrand-UNCG	4	1. Kaylee Higgins-ETSU	1
2. Maddie Spell-UNCG	2	2. Brianna Bailey-ETSU	3		
3. 10 tied at.....	1	3. 10 tied at.....	2		

Wild pitches		
1. Jordyn Partain-SAM		5
2. McKenzie Newcomb-SAM		3
Emme Buzhardt-FUR		3
Sara Muir-ETSU		3
5. Izzy Alley-UTC		2
Taylor Long-UTC		2
Lainey Baker-SAM		2
Brianna Bailey-ETSU		2
9. 9 tied at.....		1

Balks		
-------	--	--

Hit batters		
1. Whitley Arnott-ETSU		5
Taylor Long-UTC		5
3. Salem Ward-UNCG		3
Rhyann Jones-UNCG		3
Allison Farr-ETSU		3
6. Katie Rearley-MER		2
Brianna Bailey-ETSU		2
Emme Buzhardt-FUR		2
Lauralee Scott-FUR		2
10. 6 tied at.....		1

Intentional BB allowed		
------------------------	--	--

Hits allowed		
1. Tessa Juett-WCU		2
2. Taylor Long-UTC		5
3. Jayme Eilers-WCU		6
4. Peja Goold-UTC		7
5. Salem Ward-UNCG		8
6. Brooke Parrott-UTC		10
Emme Buzhardt-FUR		10
8. Maddie Spell-UNCG		11
9. Taylor Norton-WCU		14
10. Lainey Baker-SAM		15

Runs allowed		
1. Tessa Juett-WCU		0
2. Taylor Long-UTC		2
3. Maddie Spell-UNCG		3
4. Salem Ward-UNCG		4
Jayme Eilers-WCU		4
Peja Goold-UTC		4
7. Brooke Parrott-UTC		5
8. Taylor Norton-WCU		6
Lainey Baker-SAM		6
10. Jordyn Partain-SAM		9

Earned runs allowed		
---------------------	--	--

1. Tessa Juett-WCU		0
2. Salem Ward-UNCG		2
Maddie Spell-UNCG		2
Taylor Long-UTC		2
5. Peja Goold-UTC		3
6. Brooke Parrott-UTC		4
Jayme Eilers-WCU		4
8. Lainey Baker-SAM		5
Emme Buzhardt-FUR		5
10. Taylor Norton-WCU		6

Walks allowed		
---------------	--	--

1. Peja Goold-UTC		1
Taylor Norton-WCU		1
Tessa Juett-WCU		1
4. Brooke Parrott-UTC		2
Jayme Eilers-WCU		2
Salem Ward-UNCG		2
7. Taylor Long-UTC		3
McKenzie Newcomb-SAM		3
Maddie Spell-UNCG		3
10. Lainey Baker-SAM		4

Doubles allowed		
-----------------	--	--

1. Emme Buzhardt-FUR		0
Maddie Spell-UNCG		0
3. Tessa Juett-WCU		1
Brooke Parrott-UTC		1
Taylor Norton-WCU		1
Taylor Long-UTC		1
Jordyn Partain-SAM		1
Peja Goold-UTC		1
Lauralee Scott-FUR		1
10. Salem Ward-UNCG		2

Triples allowed		
-----------------	--	--

1. Emme Buzhardt-FUR		0
Maddie Spell-UNCG		0
Tessa Juett-WCU		0
Katie Rearley-MER		0
Rhyann Jones-UNCG		0
Taylor Long-UTC		0
Jordyn Partain-SAM		0
Peja Goold-UTC		0
Grace Taylor-MER		0
Salem Ward-UNCG		0

Home runs allowed		
-------------------	--	--

1. Taylor Norton-WCU		0
Jayme Eilers-WCU		0
Maddie Spell-UNCG		0
Tessa Juett-WCU		0
Salem Ward-UNCG		0
Taylor Long-UTC		0
Jordyn Partain-SAM		0
Peja Goold-UTC		0
9. Rhyann Jones-UNCG		1
Lauralee Scott-FUR		1

The Automated ScoreBook
SoCon Fielding Leaders (as of Feb 24, 2023)
(All games)

Hitting minimums - 1 Games 50% of Games
Pitching minimums - 1 Games 1.0 IP/Game

Fielding pct		Chances		Putouts	
1. Riley Ludlam-FUR	1.000	1. Merritt Cahoon-SAM	72	1. Merritt Cahoon-SAM	68
Riley Nayadley-ETSU	1.000	2. Delaney Cumbie-UNCG	71	Delaney Cumbie-UNCG	68
Samantha Reelee-WCU	1.000	3. Kiley Perry-FUR	65	3. Kiley Perry-FUR	59
Olivia Lipari-UTC	1.000	4. Logan Champion-SAM	63	4. Logan Champion-SAM	53
Emily Coltharp-UTC	1.000	5. Riley Ludlam-FUR	49	5. Samantha Lagrama-UNCG	47
Myra Twitty-WCU	1.000	6. Samantha Lagrama-UNCG	48	6. Riley Ludlam-FUR	45
Grace Loftin-UNCG	1.000	7. Tory Hedgecock-MER	45	7. Tory Hedgecock-MER	38
Ashlee Lykins-FUR	1.000	8. Kaylee Higgins-ETSU	40	8. Kaylee Higgins-ETSU	34
Lillian Wilkerson-MER	1.000	9. Brooklynn Maxwell-UNCG	38	9. Acelynn Sellers-UTC	33
Bailey Huneycutt-WCU	1.000	10. 2 tied at.....	36	10. Sara Muir-ETSU	29
Assists		Fielding double plays		Passed balls	
1. Sarah Squillace-SAM	22	1. Tory Hedgecock-MER	3	1. Kaylee Higgins-ETSU	4
2. Brooklynn Maxwell-UNCG	20	Merritt Cahoon-SAM	3	2. Logan Champion-SAM	2
3. Hana Hashioka-FUR	18	Maycin Brown-UNCG	3	3. Jayce Purdy-UTC	1
4. Ansley Yantis-SAM	17	4. Delaney Cumbie-UNCG	2	Lillian Wilkerson-MER	1
5. Chloe Fabio-FUR	16	Jessie Shipley-UNCG	2	Presley Williamson-UTC	1
Riley Nayadley-ETSU	16	Ansley Yantis-SAM	2	Delaney Cumbie-UNCG	1
7. Kaili Phillips-UTC	13	7. 17 tied at.....	1		
8. 5 tied at.....	12				
Catchers interference		Steal attempts against		Stolen bases against	
		1. Logan Champion-SAM	19	1. Delaney Cumbie-UNCG	15
		2. Delaney Cumbie-UNCG	17	2. Logan Champion-SAM	13
		3. McKenzie Newcomb-SAM	11	3. Riley Ludlam-FUR	10
		Riley Ludlam-FUR	11	4. McKenzie Newcomb-SAM	7
		Kaylee Higgins-ETSU	11	Jorde Chartrand-UNCG	7
		6. Jorde Chartrand-UNCG	8	Kaylee Higgins-ETSU	7
		7. Katie Rearley-MER	6	7. Makenzie Henderson-ETSU	5
		Jordyn Partain-SAM	6	Makayla Cooper-ETSU	5
		Makayla Cooper-ETSU	6	Katie Rearley-MER	5
		10. 2 tied at.....	5	Sophie Sumner-MER	5
Caught stealing by		Errors			
1. Logan Champion-SAM	6	1. Maycin Brown-UNCG	5		
2. Kaylee Higgins-ETSU	4	2. Rebeca Laudino-MER	4		
McKenzie Newcomb-SAM	4	Bailey Ledvina-MER	4		
4. Brianna Bailey-ETSU	3	Kiley Perry-FUR	4		
5. Tessa Juett-WCU	2	Brooklynn Maxwell-UNCG	4		
Jordyn Partain-SAM	2	6. Sarah Squillace-SAM	3		
Delaney Cumbie-UNCG	2	Ansley Yantis-SAM	3		
Samantha Reelee-WCU	2	Alex Rose Molinar-FUR	3		
9. 9 tied at.....	1	Hannah Poole-FUR	3		
		Tory Hedgecock-MER	3		

The Automated ScoreBook
 Game Highs for SoCon (as of Feb 24, 2023)
 (All games)

TEAM GAME HIGHS

Batting

At bats:	37	-	Samford (vs Belmont, Feb 18, 2023)
Runs scored:	11	-	Furman (vs Gardner-Webb, Feb 21, 2023)
Hits:	13	-	Furman (vs Sacred Heart, Feb 17, 2023)
RBIs:	10	-	Furman (vs Gardner-Webb, Feb 21, 2023)
	10	-	UNCG (vs Binghamton, Feb 12, 2023)
	10	-	Furman (vs Sacred Heart, Feb 17, 2023)
Doubles:	6	-	UNCG (vs Binghamton, Feb 12, 2023)
Triples:	2	-	UNCG (vs Long Island, Feb 10, 2023)
Home runs:	3	-	Furman (vs Gardner-Webb, Feb 21, 2023)
Total bases:	23	-	Furman (vs Gardner-Webb, Feb 21, 2023)
	23	-	UNCG (vs Binghamton, Feb 12, 2023)
Walks:	8	-	Mercer (vs Monmouth, Feb 18, 2023)
	8	-	UNC Greensboro (vs Morehead State, Feb 18, 2023)
Strikeouts:	14	-	Western Carolina (vs Presbyterian, Feb 22, 2023)
Sac hits:	4	-	Mercer (vs Fairfield, Feb 19, 2023)
Sac flies:	2	-	East Tennessee State (vs George Washington, Feb 17, 2023)
Stolen bases:	4	-	Furman (vs Bellarmine, Feb 19, 2023)
Caught stealing:	2	-	Furman (vs Gardner-Webb, Feb 21, 2023)
Hit by pitch:	3	-	ETSU (vs Miami, Feb 11, 2023)
	3	-	Mercer (vs Monmouth, Feb 18, 2023)
	3	-	Mercer (vs Troy, Feb 22, 2023)
Runners LOB:	11	-	Mercer (vs Monmouth, Feb 18, 2023)
	11	-	East Tennessee State (vs Campbell, Feb 18, 2023)
	11	-	Samford (vs Ball State, Feb 17, 2023)
Hit into DP:	2	-	(4 times)

Fielding

Putouts:	30	-	Samford (vs Belmont, Feb 18, 2023)
Assists:	14	-	Chattanooga (vs Tennessee State, Feb 22, 2023)
	14	-	Samford (vs Belmont, Feb 18, 2023)
Errors:	6	-	Mercer (vs Hampton, Feb 12, 2023)
Passed balls:	1	-	(10 times)
DPs turned:	1	-	(16 times)

Pitching

Innings pitched:	10.0	-	Samford (vs Belmont, Feb 18, 2023)
Strikeouts:	12	-	Samford (vs Southern Miss, Feb 12, 2023)
	12	-	Samford (vs Ball State, Feb 17, 2023)
Hits allowed:	2	-	Western Carolina (vs Tennessee Tech, Feb 10, 2023)
	2	-	Samford (vs Lindenwood, Feb 18, 2023)
Wild pitches:	4	-	Chattanooga (vs Maine, Feb 19, 2023)
Hit batters:	5	-	ETSU (vs Campbell, Feb 10, 2023)

The Automated ScoreBook
Game Highs for SoCon (as of Feb 24, 2023)
(All games)

GAME HIGHS (BOTH TEAMS)

Batting

At bats:	37	-	Belmont vs Samford (Feb 18, 2023)
Runs scored:	11	-	Furman vs Gardner-Webb (Feb 21, 2023)
Hits:	13	-	Sacred Heart vs Furman (Feb 17, 2023)
RBIs:	10	-	Furman vs Gardner-Webb (Feb 21, 2023)
	10	-	UNCG vs Binghamton (Feb 12, 2023)
	10	-	Sacred Heart vs Furman (Feb 17, 2023)
Doubles:	6	-	UNCG vs Binghamton (Feb 12, 2023)
Triples:	2	-	Long Island vs UNCG (Feb 10, 2023)
Home runs:	3	-	Furman vs Gardner-Webb (Feb 21, 2023)
Total bases:	23	-	Furman vs Gardner-Webb (Feb 21, 2023)
	23	-	UNCG vs Binghamton (Feb 12, 2023)
Walks:	8	-	Mercer vs Monmouth (Feb 18, 2023)
	8	-	Morehead State vs UNC Greensboro (Feb 18, 2023)
Strikeouts:	14	-	Western Carolina vs Presbyterian (Feb 22, 2023)
Sac hits:	4	-	Fairfield vs Mercer (Feb 19, 2023)
Sac flies:	2	-	East Tennessee State vs George Washington (Feb 17, 2023)
Stolen bases:	4	-	Bellarmino vs Furman (Feb 19, 2023)
Caught stealing:	2	-	Furman vs Gardner-Webb (Feb 21, 2023)
Hit by pitch:	3	-	ETSU vs Miami (Feb 11, 2023)
	3	-	Mercer vs Monmouth (Feb 18, 2023)
	3	-	Troy vs Mercer (Feb 22, 2023)
Runners LOB:	11	-	Mercer vs Monmouth (Feb 18, 2023)
	11	-	East Tennessee State vs Campbell (Feb 18, 2023)
	11	-	Ball State vs Samford (Feb 17, 2023)
Hit into DP:	2	-	(4 times)

Fielding

Putouts:	30	-	Belmont vs Samford (Feb 18, 2023)
Assists:	14	-	Tennessee State vs Chattanooga (Feb 22, 2023)
	14	-	Belmont vs Samford (Feb 18, 2023)
Errors:	6	-	Hampton vs Mercer (Feb 12, 2023)
Passed balls:	1	-	(10 times)
DPs turned:	2	-	(4 times)

Pitching

Innings pitched:	10.0	-	Belmont vs Samford (Feb 18, 2023)
Strikeouts:	12	-	Samford vs Southern Miss (Feb 12, 2023)
	12	-	Ball State vs Samford (Feb 17, 2023)
Hits allowed:	2	-	Lindenwood vs Samford (Feb 18, 2023)
	2	-	Tennessee Tech vs Western Carolina (Feb 10, 2023)
Wild pitches:	4	-	Maine vs Chattanooga (Feb 19, 2023)
Hit batters:	5	-	ETSU vs Campbell (Feb 10, 2023)

The Automated ScoreBook
Game Highs for SoCon (as of Feb 24, 2023)
(All games)

INDIVIDUAL GAME HIGHS

Batting

At bats:	5 - (4 times)
Runs scored:	3 - Lykins, Furman (vs Gardner-Webb, Feb 21, 2023)
	3 - D. Cumbie, UNCG (vs Binghamton, Feb 12, 2023)
	3 - Yoshizumi, Furman (vs Binghamton, Feb 18, 2023)
Hits:	3 - (11 times)
RBIs:	6 - G. Loftin, UNCG (vs Binghamton, Feb 12, 2023)
Doubles:	2 - (4 times)
Triples:	1 - (8 times)
Home runs:	2 - Burroughs, Furman (vs Gardner-Webb, Feb 21, 2023)
Total bases:	8 - D. Cumbie, UNCG (vs Binghamton, Feb 12, 2023)
	8 - G. Loftin, UNCG (vs Binghamton, Feb 12, 2023)
	8 - Burroughs, Furman (vs Gardner-Webb, Feb 21, 2023)
Walks:	2 - (21 times)
Strikeouts:	3 - Pate, Samford (vs Seton Hall, Feb 10, 2023)
	3 - A.Woods, Mercer (vs Troy, Feb 22, 2023)
	3 - Nelson, Samford (vs Belmont, Feb 18, 2023)
Sac hits:	2 - A. Yantis, Samford (vs Seton Hall, Feb 10, 2023)
	2 - B.Ledvina, Mercer (vs Fairfield, Feb 19, 2023)
Sac flies:	2 - S. Muir, East Tennessee State (vs George Washington, Feb 17, 2023)
Stolen bases:	2 - K. Michel, East Tennessee State (vs George Washington, Feb 17, 2023)
Caught stealing:	1 - (12 times)
Hit by pitch:	2 - R.Laudino, Mercer (vs Monmouth, Feb 18, 2023)
	2 - L.Wilkerson, Mercer (vs Troy, Feb 22, 2023)
Runners LOB:	5 - Pelfrey, Western Carolina (vs Presbyterian, Feb 22, 2023)
	5 - R.Laudino, Mercer (vs Fairfield, Feb 19, 2023)
	5 - R.Laudino, Mercer (vs Florida A&M, Feb 12, 2023)

Fielding

Putouts:	14 - Twitty, Western Carolina (vs Alabama State, Feb 10, 2023)
Assists:	6 - Stewman, Western Carolina (vs Alabama State, Feb 10, 2023)
Errors:	3 - T.Hedgecock, Mercer (vs Hampton, Feb 12, 2023)
Passed balls:	1 - (10 times)

Pitching

Innings pitched:	8.0 - Juett, Western Carolina (vs Tennessee Tech, Feb 10, 2023)
Strikeouts:	10 - J. Chartrand, UNC Greensboro (vs Campbell, Feb 22, 2023)
Wild pitches:	3 - Partain, Samford (vs Southern Miss, Feb 12, 2023)
Hit batters:	4 - W. Arnott, ETSU (vs Campbell, Feb 10, 2023)