



SOUTHERN CONFERENCE SOFTBALL

2023



702 North Pine Street, Spartanburg, SC 29303 • 864-591-5100 • Fax: 864-591-3448

Ralan Wardlaw, Assistant Director of Media Relations (SB contact)

facebook.com/SouthernConference • twitter.com/SoConSports • instagram.com/SouthernConference

2023 SOUTHERN CONFERENCE SOFTBALL STANDINGS

	Conference					Overall					
	W-L	Pct.	H	A	ST	W-L	Pct.	H	A	N	ST
Chattanooga	0-0	0.000	0-0	0-0	---	9-5	.643	4-4	0-0	5-1	W1
UNCG	0-0	0.000	0-0	0-0	---	13-8	.619	8-5	2-2	3-1	W1
Western Carolina	0-0	0.000	0-0	0-0	---	5-9	.357	1-0	3-6	1-3	L1
Mercer	0-0	0.000	0-0	0-0	---	6-14	.300	1-7	0-5	5-2	L2
Samford	0-0	0.000	0-0	0-0	---	6-14	.300	4-5	0-7	2-2	L3
Furman	0-0	0.000	0-0	0-0	---	5-16	.238	2-3	2-6	1-7	L1
ETSU	0-0	0.000	0-0	0-0	---	4-13	.235	1-2	1-6	2-5	L2

UPCOMING SCHEDULE (ALL TIMES EASTERN)

March 10 (Friday)

Mercer vs. Rutgers, 10 a.m.¹
 Chattanooga vs. South Alabama, 11 a.m.²
 UNCG vs. Jacksonville, 12:30 p.m.³
 Western Carolina vs. Yale, 12:30 p.m.⁴
 Samford vs. Western Michigan, 12:30 p.m.⁵
 Mercer at Florida, 12:30 p.m.¹
 ETSU at Nebraska at Omaha, 2 p.m.⁶
 Chattanooga vs. Iowa, 3:30 p.m.²
 UNCG at No. 4 Clemson, 5:30 p.m.³
 Western Carolina vs. Michigan State, 5:30 p.m.⁴

March 11 (Saturday)

ETSU at Nebraska at Omaha, 10 a.m.⁶
 Mercer at Florida, 11 a.m.¹
 Chattanooga vs. Hartford, 11:30 a.m.²
 UNCG vs. Bryant, 12:30 p.m.³
 ETSU vs. Southeastern Louisiana, 12:30 p.m.⁶
 Western Carolina vs. Yale, 1 p.m.⁴
 Charleston Southern at Furman, 1 p.m.
 Samford vs. Western Michigan, 1 p.m.⁵
 Chattanooga vs. Bucknell, 2 p.m.²
 Charleston Southern at Furman, 3 p.m.
 Samford at Jacksonville State, 3:30 p.m.⁵
 Mercer vs. Rutgers, 4 p.m.¹
 UNCG at No. 4 Clemson, 5:30 p.m.³
 Western Carolina at San Diego, 6 p.m.⁴

March 12 (Sunday)

Chattanooga vs. Lafayette, 9 a.m.²
 Mercer vs. Louisiana, 9:30 a.m.¹
 Western Carolina at San Diego, Noon⁴
 Samford at Jacksonville State, 1:30 p.m.⁵
 ETSU at Mississippi State, 2:30 p.m.⁶

¹ - University of Florida Tournament (Gainesville, Fla.)
² - Madeira Beach Invitational (Madeira Beach, Fla.)
³ - Clemson Classic (Clemson, S.C.)
⁴ - San Diego Classic (San Diego, Calif.)
⁵ - Jacksonville State Tournament (Jacksonville, Ala.)
⁶ - Bulldog Invitational (Starkville, Miss.)

March 14 (Tuesday)

Morehead State at ETSU, 2 p.m.
 Morehead State at ETSU, 4 p.m.
 Alabama State at Samford, 6 p.m.

March 15 (Wednesday)

Alabama State at Mercer, 9:30 a.m.
 Chattanooga vs. Princeton, 10 a.m.²
 Western Carolina at Georgia State, Noon
 Chattanooga vs. Lehigh, 12:30 p.m.²
 Western Carolina at Georgia State, 2 p.m.
 Notre Dame at UNCG, 5 p.m.
 Furman at No. 18 Georgia, 6:30 p.m.

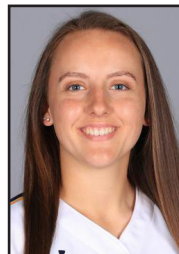
March 16 (Thursday)

Chattanooga vs. Florida Gulf Coast, 1 p.m.²
 Samford vs. Purdue, 7 p.m.

SoCon PLAYER OF THE WEEK (2/27)

Delaney Cumbie, 5th, C, UNCG

UNCG's Cumbie hit .571 over three games as the Spartans swept Elon over the weekend at home. In Saturday's doubleheader, Cumbie, who served as the team's leadoff batter, went a combined 2-for-4 with a walk and a run scored and was hit by three pitches as UNCG won game one, 3-2, and game two, 10-5. The next day, the Dunn, North Carolina, native was 2-for-2 at the plate with two doubles, a walk and a run scored as UNCG completed its weekend sweep with a 3-1 win. Cumbie finished the weekend with zero fielding errors behind the plate and at first base.



SoCon PITCHER OF THE WEEK (2/27)

Alyssa Lavdis, So., Chattanooga

Chattanooga's Lavdis had two appearances with one start last week. The Concord, Ohio, native pitched three innings in relief against Harvard on Friday, earning a win after giving up just one hit and striking out three batters in the Mocs' 7-3 victory. The sophomore pitched a complete game with a career-best 15 strikeouts, which is one shy of the school record, in Chattanooga's 5-0 shutout over Detroit. For the week, Lavdis pitched 10 innings with five hits, four walks and 18 strikeouts and a 0.00 ERA.



NOTES

- Six of the seven SoCon teams are playing in weekend tournaments. Furman will be playing at home against Charleston Southern in a doubleheader on Saturday.

- Mercer will be the third SoCon team to face No. 4 Clemson this season when the Spartans take on the Tigers twice during the Clemson Classic on Friday and Saturday.

- Chattanooga is leading the league in batting average (.276) and fielding percentage (.976). The Mocs are second in team ERA (2.88).

- UNCG catcher Delaney Cumbie was named SoCon player of the week for the second time this season on Monday. Cumbie is the conference's active career leader in seven categories including runs (153), RBIs (113) and home runs (39).

- Chattanooga sophomore Alyssa Lavdis was named pitcher of the week. Lavdis shares the conference lead with UNCG's Salem Ward in hits allowed (16).

- Furman's Riley Ludlam is the SoCon leader in batting average (.392) and slugging percentage (.765). The senior is second in RBIs (18). Ludlam was named the SoCon player of the month for February this week.

- Samford's McKenzie Newcomb was named the league's pitcher of the month for February. Newcomb had an 1.03 ERA during the first month of the season.

- Western Carolina began its California road trip with wins over UC San Diego and UC Riverside. Over the weekend, the Catamounts will stay on the west coast and face Yale, Michigan State and San Diego.

- UNCG infielder Maycin Brown leads the SoCon in home runs (7) and RBIs (21). Brown has scored 17 runs this season, which is third in the league.

- Chattanooga freshman Taylor Long has a 1.30 ERA and an opposing batting average of .189. Both of those lead the SoCon.

- Furman travels to No. 18 Georgia for a midweek tilt on Wednesday.

- Samford and Mercer both welcome Alabama State for home games on Tuesday and Wednesday, respectively.

ACTIVE SoCON CAREER LEADERS

BATTING AVERAGE [Minimum 250 AB]

.360 - Emily Coltharp (190-525); Chattanooga, 2019-pr.

ON-BASE PCT [Minimum 250 AB]

.486 - Delaney Cumbie; UNCG, 2019-pr.

SLUGGING PCT [Minimum 250 AB]

.597 - Delaney Cumbie; UNCG, 2019-pr.

AT BATS

575 - Emily Coltharp ; Chattanooga, 2019-pr.

RUNS SCORED

153 - Delaney Cumbie; UNCG, 2019-pr.

HITS

207 - Emily Coltharp ; Chattanooga, 2019-pr.

RUNS BATTED IN

113 - Delaney Cumbie; UNCG, 2019-pr.

DOUBLES

37 - Riley Ludlam; Furman, 2020-pr.

TRIPLES

4 - Olivia Lipari, Chattanooga, 2022-pr.
4 - Emily Coltharp ; Chattanooga, 2019-pr.

HOME RUNS

39 - Delaney Cumbie; UNCG, 2019-pr.

TOTAL BASES

313 - Delaney Cumbie; UNCG, 2019-pr.

WALKS

143 - Delaney Cumbie; UNCG, 2019-pr.

STOLEN BASES

56 - Emily Coltharp ; Chattanooga, 2019-pr.

STOLEN BASE PCT [Minimum 50 steal attempts]

.875 - Emily Coltharp ; Chattanooga, 2019-pr.

EARNED RUN AVERAGE [Minimum 200 IP]

1.77 - McKenzie Newcomb, Samford, 2022-pr.

WINS

24 - Brooke Parrott, Chattanooga, 2021-pr.

SAVES

4 - Brooke Parrott, Chattanooga, 2021-pr.

OPPONENT BATTING AVERAGE [Minimum 200 IP]

.228 - Brooke Parrott, Chattanooga, 2021-pr.

APPEARANCES

77 - Sierra Tufts, Furman, 2021-pr.

GAMES STARTED

66 - Sierra Tufts, Furman, 2021-pr.

COMPLETE GAMES

30 - Jayme Eilers, Western Carolina, 2020-pr.

SHUTOUTS

7 - Jayme Eilers, Western Carolina, 2020-pr.

INNINGS PITCHED

361.0 - Sierra Tufts, Furman, 2021-pr.

STRIKEOUTS

275 - Jayme Eilers, Western Carolina, 2020-pr.

STRIKEOUTS PER 7 INNINGS [Minimum 200 IP]

7.30 - Jayme Eilers (275 so, 263.2 ip, Western Carolina, 2020-pr.

WALKS PER 7 INNINGS [Minimum 200 IP]

0.97 - McKenzie Newcomb (35 bb, 253.0 ip, Samford, 2022-pr.

HITS ALLOWED PER 7 INNINGS [Minimum 200 IP]

5.85 - Brooke Parrott (223 h, 266.2 ip), Chattanooga, 2021-pr.

SoCON PLAYERS OF THE WEEK

Feb. 13 Delaney Cumbie, 5th, C, UNCG
Feb. 20Riley Ludlam, Sr, C, Furman
Feb. 27 Sara Muir, So., P/1B, ETSU
March 6 Delaney Cumbie, 5th, C, UNCG
March 13
March 20
March 27
April 3
April 10
April 17
April 24
May 1
May 8.....

SoCON PITCHERS OF THE WEEK

Feb. 13Tessa Juett, So., Western Carolina
Feb. 20Maddie Spell, R-So., UNCG
Feb. 27 McKenzie Newcomb, So., Samford
March 6 Alyssa Lavdis, So., Chattanooga
March 13
March 20
March 27
April 3
April 10
April 17
April 24
May 1
May 8.....

SoCON PLAYERS OF THE MONTH

February.....Riley Ludlam, Sr, C, Furman
March.....
April.....
May.....

SoCON PITCHERS OF THE MONTH

February..... McKenzie Newcomb, So., Samford
March.....
April.....
May.....

SoCON COACHING RECORDS

Coach, school	Career (yrs.)	School (yrs.)	SoCon (yrs.)
Cheryl Milligan, ETSU (int.)	544-221 (19th)	4-13 (1st)	0-0 (1st)
Stacey Johnson-Whitfield, Furman	27-48 (2nd)	Same	8-10 (2nd)
Lindsay Fico, Mercer	92-112 (5th)	18-48 (2nd)	7-11 (2nd)
Janelle Breneman, UNCG	467-401 (20th)	329-199 (11th)	104-61 (11th)
Kimball Cassidy, Samford	359-159-1 (13th)	38-26 (2nd)	15-3 (2nd)
Frank Reed, Chattanooga	1,176-586 (34th)	696-497 (23rd)	257-132 (23rd)
Jim Clift, Western Carolina	222-380 (12th)	Same	74-118 (12th)

Preseason predictions

Preseason Poll

Team (first-place votes)	Points
1. Samford (4)	33
2. UNCG (3)	31
3. Chattanooga	28
4. Furman	17
Western Carolina	17
6. Mercer	15
7. ETSU	6

Preseason Player of the Year

Emily Coltharp, Chattanooga, Sr.

Preseason Pitcher of the Year

McKenzie Newcomb, Samford, So.

Preseason All-SoCon First Team

P	McKenzie Newcomb, Samford, So.
P	Brooke Parrott, Chattanooga, Sr.
C	Delaney Cumbie, UNCG, 5th
IF	Rebeca Laudino, Mercer, Sr.
IF	Maycin Brown, UNCG, Sr.
IF	Emily Coltharp, Chattanooga, Sr.
IF	Bailey Huneycutt, Western Carolina, 5th
OF	Ashlee Lykins, Furman, Jr.
OF	Grace Loftin, UNCG, So.
OF	Brooklynn Brewington, Western Carolina, Sr.
DP	Riley Lambert, Western Carolina, Jr.

Preseason Second-Team All-SoCon

P	Sierra Tufts, Furman, Jr.
P	Jordyn Partain, Samford, So.
C	Riley Ludlam, Furman, Sr.
IF	Cameron Young, ETSU, So.
IF	Samantha Lagrama, UNCG, 5th
IF	Gwynnie Hornibrook, Samford, So.
IF	Kailey Snell, Chattanooga, Jr.
IF	Myra Twitty, Western Carolina, Gr.
OF	Caitlin Goldwait, Furman, So.
OF	Alyssa Woods, Mercer, Jr.
OF	Adison Keylon, Chattanooga, Jr.
DP	Kendall Forsythe, Chattanooga, Jr.



ETSU
(4-13, 0-0 SoCon)

F10	vs. Campbell [!]	L, 4-8
F11	vs. Miami (Ohio) [!]	L, 2-3
F11	at Charlotte [!]	L, 2-3
F12	vs. South Carolina [!]	CCD
F16	at South Carolina [^]	L, 2-9
F17	vs. Western Kentucky [^]	L, 1-6
F17	vs. George Washington [^]	L, 2-4
F18	vs. Campbell [^]	L, 3-9
F21	at Radford	L, 1-7
F21	at Radford	L, 5-7
F23	at NC State [%]	W, 5-0
F24	vs. James Madison [%]	L, 2-5
F24	at NC State [%]	L, 2-8
F25	vs. Pennsylvania [%]	W, 5-1
F26	vs. Pennsylvania [%]	W, 7-3
F28	APP STATE	L, 4-5
M8	BALL STATE	W, 3-2
M8	BALL STATE	L, 3-9
M10	vs. Nebraska Omaha \$	4 p.m.
M11	vs. Nebraska Omaha \$	10 a.m.
M11	vs. SE Louisiana \$	12:30 p.m.
M12	at Mississippi State \$	2:30 p.m.
M14	MOREHEAD STATE	2 p.m.
M14	MOREHEAD STATE	4 p.m.
M17	EASTERN ILLINOIS	6 p.m.
M18	EASTERN ILLINOIS	Noon
M18	EASTERN ILLINOIS	2:30 p.m.
M25	at UNGC*	TBA
M25	at UNGC*	TBA
M26	at UNGC*	TBA
M28	at Tennessee	6 p.m.
A1	FURMAN*	TBA
A1	FURMAN*	TBA
A2	FURMAN*	TBA
A5	RADFORD	TBA
A5	RADFORD	TBA
A7	at Samford*	TBA
A7	at Samford*	TBA
A8	at Samford*	TBA
A11	at App State	TBA
A15	CHATTANOOGA*	TBA
A15	CHATTANOOGA*	TBA
A16	CHATTANOOGA*	TBA
A18	at Tennessee Tech	TBA
A29	at Western Carolina*	TBA
A29	at Western Carolina*	TBA
A30	at Western Carolina*	TBA
M6	MERCER*	TBA
M6	MERCER*	TBA
M7	MERCER*	TBA
M10-13	at SoCon Championship (Chattanooga, Tenn.)	

! - Charlotte Invitational (Charlotte, N.C.)
 ^ - Carolina Classic (Columbia, S.C.)
 % - Wolfpack Classic (Raleigh, N.C.)
 \$ - Bulldog Invitational (Starkville, Miss.)



Furman
(5-16, 0-0 SoCon)

F10	vs. Georgetown [!]	W, 3-2
F10	at Jacksonville [!]	L, 3-5
F11	vs. Georgetown [!]	CCD
F11	at North Florida [!]	CCD
F12	at North Florida [!]	CCD
F14	CLEMSON	L, 0-10
F17	SACRED HEART[!]	W, 10-2
F18	BINGHAMTON[^]	L, 5-9
F18	TOWSON[^]	L, 2-4
F19	BELLARMINE[^]	W, 5-1
F21	at Gardner-Webb	L, 10-12 (8 inn.)
F21	at Gardner-Webb	W, 11-4
F24	vs. Tulsa [%]	L, 4-7
F24	at South Alabama [%]	L, 2-3
F25	vs. Mississippi State [%]	L, 5-6
F26	vs. Louisiana Tech [%]	L, 3-7
F26	vs. Mississippi State [%]	L, 0-4
M3	vs. N.C. Central [!]	L, 4-5
M3	vs. Lehigh [!]	L, 1-3
M4	vs. Canisius [!]	L, 3-5
M4	at Campbell [!]	L, 3-7
M5	at Campbell [!]	L, 5-7
M7	at Presbyterian	W, 10-3
M7	at Presbyterian	L, 5-6
M11	CHARLESTON SOUTHERN	1 p.m.
M11	CHARLESTON SOUTHERN	3 p.m.
M15	at Georgia	6:30 p.m.
M22	at South Carolina	3 p.m.
M22	at South Carolina	5:30 p.m.
M25	at Western Carolina*	1 p.m.
M25	at Western Carolina*	3 p.m.
M26	at Western Carolina*	1 p.m.
M29	USC UPSTATE	4 p.m.
M29	USC UPSTATE	6 p.m.
A1	at ETSU*	1 p.m.
A1	at ETSU*	3 p.m.
A2	at ETSU*	1 p.m.
A5	at Clemson	7 p.m.
A7	UNCG*	1 p.m.
A7	UNCG*	3 p.m.
A8	UNCG*	1 p.m.
A12	at College of Charleston	3 p.m.
A12	at College of Charleston	5 p.m.
A15	MERCER*	1 p.m.
A15	MERCER*	3 p.m.
A16	MERCER*	1 p.m.
A19	QUEENS	4 p.m.
A19	QUEENS	6 p.m.
A22	at Samford*	2 p.m.
A22	at Samford*	4 p.m.
A23	at Samford*	2 p.m.
A29	CHATTANOOGA*	1 p.m.
A29	CHATTANOOGA*	3 p.m.
A30	CHATTANOOGA*	1 p.m.
M3	at North Carolina	1 p.m.
M10-13	at SoCon Championship (Chattanooga, Tenn.)	

! - River City Leadoff (Jacksonville, Fla.)
 ^ - Furman Invitational (Greenville, S.C.)
 % - South Alabama Tournament (Mobile, Ala.)
 \$ - Campbell Invitational (Buies Creek, N.C.)



Mercer
(6-14, 0-0 SoCon)

F10	HAMPTON[!]	W, 7-0
F11	FLORIDA A&M[!]	CCD
F12	HAMPTON[!]	L, 0-10
F12	FLORIDA A&M[!]	L, 1-5
F15	at Kennesaw State	L, 0-7
F17	vs. Monmouth [^]	W, 2-0
F17	at Stetson [^]	L, 1-3
F18	vs. Monmouth [^]	W, 10-4
F18	at Stetson [^]	L, 0-8
F19	vs. Fairfield [^]	W, 5-3
F22	TROY	L, 3-8
F24	SOUTH CAROLINA[%]	L, 1-11
F25	BELMONT[%]	L, 1-5
F25	JACKSONVILLE[%]	L, 1-13
F28	NORTHERN IOWA	L, 2-12
M3	vs. Longwood [!]	L, 2-8
M3	vs. Robert Morris [!]	L, 3-6
M4	vs. Longwood [!]	W, 2-0
M4	vs. Robert Morris [!]	W, 14-2
M5	at No. 9 Alabama [!]	L, 0-8
M8	at No. 4 Clemson	L, 0-18
M10	vs. Rutgers [@]	10:30 a.m.
M10	at Florida [@]	3:30 p.m.
M11	at Florida [@]	11 a.m.
M11	vs. Rutgers [@]	4 p.m.
M12	vs. Louisiana	9:30 a.m.
M15	ALABAMA STATE	TBA
M22	vs. Georgia State	3 p.m.
M22	vs. Georgia State	5 p.m.
M25	at Samford*	1 p.m.
M25	at Samford*	3 p.m.
M26	at Samford*	1 p.m.
M29	at Florida A&M	4 p.m.
A1	CHATTANOOGA*	2 p.m.
A1	CHATTANOOGA*	4 p.m.
A2	CHATTANOOGA*	1 p.m.
A4	GEORGIA TECH	6 p.m.
A6	at Tennessee	TBA
A7	vs. Baylor	TBA
A15	at Furman*	1 p.m.
A15	at Furman*	3 p.m.
A16	at Furman*	1 p.m.
A19	at Georgia Southern	4 p.m.
A19	at Georgia Southern	6 p.m.
A22	WESTERN CAROLINA*	2 p.m.
A22	WESTERN CAROLINA*	4 p.m.
A23	WESTERN CAROLINA*	1 p.m.
A26	at Georgia	5 p.m.
A29	UNCG*	2 p.m.
A29	UNCG*	4 p.m.
A30	UNCG*	1 p.m.
M6	at ETSU*	1 p.m.
M7	at ETSU*	3 p.m.
M7	at ETSU*	1 p.m.
M10-13	at SoCon Championship (Chattanooga, Tenn.)	

! - Heart of Georgia Classic (Macon, Ga.)
 ^ - Hatter Classic (DeLand, Fla.)
 % - Mercer Invitational (Macon, Ga.)
 \$ - Easton Crimson Classic (Tuscaloosa, Ala.)
 @ - Florida Tournament (Gainesville, Fla.)



UNCG
(13-8, 0-0 SoCon)

F10	vs. LIU [!]	W, 6-2
F10	vs. Binghamton [!]	W, 8-0
F11	at Florida Gulf Coast [!]	L, 3-4
F11	vs. Southern Illinois [!]	L, 6-9
F12	vs. Binghamton [!]	W, 10-1
F16	VIRGINIA	L, 2-6
F18	MOREHEAD STATE[^]	W, 8-0
F18	UNCW[^]	W, 4-3
F19	MOREHEAD STATE[^]	W, 7-2
F19	UNCW[^]	W, 9-1
F22	CAMPBELL	L, 1-3
F24	DELAWARE[%]	W, 4-3
F24	UCONN[%]	L, 1-3
F25	INDIANA[%]	W, 6-5
F25	UCONN[%]	L, 0-2
F26	INDIANA[%]	L, 2-17
M4	ELON	W, 3-2
M4	ELON	W, 10-5
M5	at Elon	W, 3-1
M8	at Charleston Southern	L, 0-3
M8	at Charleston Southern	W, 12-0
M10	at No. 4 Clemson [§]	2:30 p.m.
M11	vs. Jacksonville [§]	10 a.m.
M11	vs. Bryant [§]	12:30 p.m.
M12	TBD [§]	TBA
M15	NOTRE DAME	5 p.m.
M17	ARMY[@]	4 p.m.
M18	GARDNER-WEBB[@]	1:30 p.m.
M18	ARMY[@]	4 p.m.
M19	GARDNER-WEBB[@]	1:30 p.m.
M23	TOWSON	4 p.m.
M25	ETSU[*]	1 p.m.
M25	ETSU[*]	3 p.m.
M26	ETSU[*]	1 p.m.
M29	at Charlotte	5 p.m.
A4	NORTH CAROLINA	5 p.m.
A7	at Furman [*]	1 p.m.
A7	at Furman [*]	3 p.m.
A8	at Furman [*]	1 p.m.
A12	at Radford	3 p.m.
A12	at Radford	5 p.m.
A15	SAMFORD[*]	1 p.m.
A15	SAMFORD[*]	3 p.m.
A16	SAMFORD[*]	1 p.m.
A19	at Duke	5 p.m.
A22	at Chattanooga [*]	1 p.m.
A22	at Chattanooga [*]	3 p.m.
A23	at Chattanooga [*]	1 p.m.
A29	at Mercer [*]	1 p.m.
A29	at Mercer [*]	3 p.m.
A30	at Mercer [*]	1 p.m.
M2	CHARLOTTE	6 p.m.
M6	WESTERN CAROLINA[*]	1 p.m.
M6	WESTERN CAROLINA[*]	3 p.m.
M7	WESTERN CAROLINA[*]	1 p.m.
M10-13	at SoCon Championship (Chattanooga, Tenn.)	

! - FGCU Kickoff Classic (Fort Myers, Fla.)
 ^ - Spiro Classic (Greensboro, N.C.)
 % - UNCG Invitational (Greensboro, N.C.)
 § - Clemson Classic (Clemson, S.C.)
 @ - Spartan Classic (Greensboro, N.C.)



Samford
(6-14, 0-0 SoCon)

F10	vs. Seton Hall [!]	W, 1-0
F11	vs. Seton Hall [!]	CCD
F12	at Southern Miss [!]	L, 0-3
F12	at Southern Miss [!]	L, 2-3
F17	BALL STATE[@]	L, 3-5
F17	BALL STATE[@]	W, 8-7 (9 inn.)
F18	BELMONT[@]	L, 3-4(10 inn.)
F18	LINDENWOOD[@]	L, 0-1
F19	at UAB [@]	L, 2-3
F22	at Alabama	L, 2-3
F24	SOUTHERN INDIANA[^]	L, 0-1
F24	IUPUI[^]	W, 7-2
F25	NORTH ALABAMA[^]	L, 1-2
F25	IUPUI[^]	W, 3-1
F26	SOUTHERN INDIANA[^]	W, 5-2
F28	at Kennesaw State	L, 0-1
M3	vs. Ball State [%]	L, 0-3
M3	vs. Stetson [%]	W, 10-2
M4	vs. Stetson [%]	L, 0-1
M4	at No. 18 Georgia [%]	L, 0-9
M5	at No. 18 Georgia [%]	L, 3-11
M11	vs. Western Michigan [§]	Noon.
M11	at Jacksonville State [§]	2:30 p.m.
M12	vs. Western Michigan [§]	10 a.m.
M12	at Jacksonville State [§]	12:30 p.m.
M14	ALABAMA STATE	6 p.m.
M16	vs. Purdue ⁺	6 p.m.
M17	vs. St. Thomas ⁺	10:30 a.m.
M17	at Ole Miss ⁺	3:30 p.m.
M18	vs. St. Thomas ⁺	1 p.m.
M18	at Ole Miss ⁺	6 p.m.
M22	at North Alabama	TBA
M25	MERCER[*]	2 p.m.
M25	MERCER[*]	4 p.m.
M26	MERCER[*]	2 p.m.
M29	AUBURN	6 p.m.
A1	at Western Carolina [*]	1 p.m.
A1	at Western Carolina [*]	3 p.m.
A2	at Western Carolina [*]	1 p.m.
A7	ETSU[*]	2 p.m.
A7	ETSU[*]	4 p.m.
A8	ETSU[*]	2 p.m.
A11	ALABAMA	6 p.m.
A15	at UNCG [*]	1 p.m.
A15	at UNCG [*]	3 p.m.
A16	at UNCG [*]	1 p.m.
A19	UAB	6 p.m.
A22	FURMAN[*]	2 p.m.
A22	FURMAN[*]	4 p.m.
A23	FURMAN[*]	2 p.m.
A26	KENNESAW STATE	5 p.m.
M2	JACKSONVILLE STATE	TBA
M6	at Chattanooga [*]	1 p.m.
M6	at Chattanooga [*]	3 p.m.
M7	at Chattanooga [*]	1 p.m.
M10-13	at SoCon Championship (Chattanooga, Tenn.)	

! - USM Tournament (Hattiesburg, Miss.)
 @ - UAB Classic (Birmingham, Ala.)
 ^ - Bulldog Classic (Birmingham, Ala.)
 % - UGA Tournament (Athens, Ga.)
 § - JSU Invitational (Jacksonville, Ala.)
 + - Ole Miss Tournament (Oxford, Miss.)



Chattanooga
(9-5, 0-0 SoCon)

F10	vs. James Madison [!]	W, 4-3
F12	at College of Charleston [!]	CCD
F17	MARSHALL[^]	CCD
F17	INDIANA STATE[^]	CCD
F18	MARSHALL[^]	W, 7-4
F18	WESTERN ILLINOIS[^]	W, 5-4
F19	MAINE[^]	L, 4-5
F19	WESTERN ILLINOIS[^]	L, 2-4
F22	TENNESSEE STATE	W, 3-2 (9 inn.)
F24	S.E. MISSOURI STATE[%]	CCD
F24	WESTERN MICHIGAN[%]	CCD
F24	MEMPHIS[%]	CCD
F25	EASTERN ILLINOIS[%]	W, 11-9
F25	UNLV[%]	L, 3-5
F26	AKRON[%]	L, 1-2
M3	vs. Harvard [§]	W, 7-3
M4	at Gardner-Webb [§]	W, 3-2
M4	vs. Sacred Heart [§]	W, 6-4
M5	vs. Harvard [§]	L, 2-5
M5	vs. Detroit [§]	W, 5-0
M10	vs. Iowa [@]	11 a.m.
M10	vs. New Mexico State [@]	1:30 p.m.
M11	vs. Hartford [@]	1:30 p.m.
M11	vs. Sacred Heart [@]	4 p.m.
M12	vs. Bucknell [@]	9 a.m.
M15	vs. Princeton	10 a.m.
M15	vs. Iona	12:30 p.m.
M16	FLORIDA GULF COAST	1 p.m.
M17	FLORIDA GULF COAST	1 p.m.
M17	FLORIDA GULF COAST	3 p.m.
M24	VIRGINIA TECH	1 p.m.
M25	VIRGINIA TECH	Noon
M25	VIRGINIA TECH	2 p.m.
M29	LIPSCOMB	6 p.m.
A1	at Mercer [*]	1 p.m.
A1	at Mercer [*]	3 p.m.
A2	at Mercer [*]	1 p.m.
A5	at Georgia State	3 p.m.
A7	WESTERN CAROLINA[*]	3 p.m.
A7	WESTERN CAROLINA[*]	5 p.m.
A8	WESTERN CAROLINA[*]	Noon
A15	ETSU[*]	1 p.m.
A15	ETSU[*]	3 p.m.
A16	ETSU[*]	1 p.m.
A19	at Austin Peay	5 p.m.
A22	UNCG[*]	1 p.m.
A22	UNCG[*]	3 p.m.
A23	UNCG[*]	2 p.m.
A29	at Furman [*]	1 p.m.
A29	at Furman [*]	3 p.m.
A30	at Furman [*]	1 p.m.
M6	SAMFORD[*]	1 p.m.
M6	SAMFORD[*]	3 p.m.
M7	SAMFORD[*]	2 p.m.
M10-13	at SoCon Championship (Chattanooga, Tenn.)	

! - Charleston Invitational (Charleston, S.C.)
 ^ - Chattanooga Challenge (Chattanooga, Tenn.)
 % - Frost Challenge (Chattanooga, Tenn.)
 § - Gardner-Webb Tournament (Boiling Springs, N.C.)
 @ - Madeira Beach Invitational (Madeira Beach, Fla.)



Western Carolina
(5-9, 0-0 SoCon)

F10	vs. Tennessee Tech [!]	W, 1-0 (8 inn.)
F10	at Alabama State [!]	W, 1-0
F11	vs. UT Martin [!]	CCD
F11	at Alabama State [!]	CCD
F12	vs. UT Martin [!]	CCD
F22	at Presbyterian	L, 2-5
F22	at Presbyterian	L, 5-6
F24	vs. Northern Iowa [^]	L, 0-9
F24	vs. Tennessee State [^]	L, 0-3
F25	vs. Tennessee State [^]	W, 7-5
F25	at Georgia State [^]	L, 4-5
F26	vs. Northern Iowa [^]	L, 1-7
M1	at USC Upstate	L, 2-6
M1	at USC Upstate	L, 1-5
M7	at UC San Diego	W, 1-0
M8	at UC Riverside	W, 5-2
M8	at UC Riverside	L, 2-6
M10	vs. Yale [%]	1 p.m.
M10	vs. Michigan State [%]	6 p.m.
M11	vs. Yale [%]	1 p.m.
M11	at San Diego [%]	6 p.m.
M12	at San Diego [%]	Noon
M15	at Georgia State	Noon
M15	at Georgia State	2 p.m.
M21	at Gardner-Webb	3 p.m.
M21	at Gardner-Webb	5 p.m.
M25	FURMAN*	1 p.m.
M25	FURMAN*	3 p.m.
M26	FURMAN*	1 p.m.
M29	RADFORD	3 p.m.
M29	RADFORD	5 p.m.
A1	SAMFORD*	1 p.m.
A1	SAMFORD*	3 p.m.
A2	SAMFORD*	1 p.m.
A7	at Chattanooga [*]	1 p.m.
A7	at Chattanooga [*]	3 p.m.
A8	at Chattanooga [*]	1 p.m.
A18	APP STATE	4 p.m.
A22	at Mercer [*]	1 p.m.
A22	at Mercer [*]	3 p.m.
A23	at Mercer [*]	1 p.m.
A26	N.C. CENTRAL	3 p.m.
A26	N.C. CENTRAL	5 p.m.
A29	ETSU*	1 p.m.
A29	ETSU*	3 p.m.
A30	ETSU*	1 p.m.
M6	at UNCG [*]	1 p.m.
M6	at UNCG [*]	3 p.m.
M7	at UNCG [*]	1 p.m.
M10-13	at SoCon Championship (Chattanooga, Tenn.)	

! - Stinger Classic (Montgomery, Ala.)

^ - Panther Invitational at GSU (Atlanta, Ga.)

% - San Diego Classic (San Diego, Calif.)

The Automated ScoreBook
SoCon Batting Leaders (as of Mar 09, 2023)
(All games)

Hitting minimums - 1 Games 50% of Games 2.0 AB/Game 2.5 TPA/Game
Pitching minimums - 1 Games 1.0 IP/Game

Batting avg		Slugging pct		On base pct	
1. Chattanooga	.276	1. UNCG	.454	1. UNCG	.375
2. ETSU	.266	2. Chattanooga	.432	2. Chattanooga	.343
3. Furman	.244	3. Furman	.373	3. ETSU	.340
4. UNCG	.244	4. ETSU	.365	4. Furman	.322
5. Samford	.232	5. Samford	.344	5. Mercer	.310
6. Mercer	.219	6. Mercer	.294	6. Samford	.305
7. Western Carolina	.213	7. Western Carolina	.279	7. Western Carolina	.280
Runs scored		Hits		Runs batted in	
1. UNCG	105	1. Furman	144	1. UNCG	102
2. Furman	94	2. ETSU	124	2. Furman	87
3. Chattanooga	63	3. UNCG	122	3. Chattanooga	54
4. Mercer	55	4. Samford	120	4. Mercer	50
5. ETSU	52	5. Chattanooga	105	5. Samford	46
6. Samford	50	6. Mercer	100	6. ETSU	45
7. Western Carolina	32	7. Western Carolina	77	7. Western Carolina	26
Doubles		Triples		Home runs	
1. UNCG	30	1. Furman	4	1. UNCG	23
2. Samford	24	2. Chattanooga	3	2. Furman	15
3. Furman	23	UNCG	3	3. ETSU	10
Chattanooga	23	4. Samford	2	Chattanooga	10
5. ETSU	14	5. ETSU	1	Samford	10
6. Mercer	10			6. Mercer	8
7. Western Carolina	9			7. Western Carolina	5
Total bases		Total plate appearances		At bats	
1. UNCG	227	1. Furman	674	1. Furman	590
2. Furman	220	2. UNCG	615	2. Samford	518
3. Samford	178	3. Samford	585	3. UNCG	500
4. ETSU	170	4. Mercer	537	4. ETSU	466
5. Chattanooga	164	5. ETSU	526	5. Mercer	456
6. Mercer	134	6. Chattanooga	441	6. Chattanooga	380
7. Western Carolina	101	7. Western Carolina	404	7. Western Carolina	362
Walks		Hit by pitch		Strikeouts	
1. UNCG	91	1. Furman	19	1. Samford	139
2. Furman	52	2. UNCG	15	2. Mercer	120
3. Samford	49	3. Mercer	13	3. UNCG	109
4. Mercer	48	4. ETSU	10	4. Furman	102
5. ETSU	44	5. Western Carolina	7	5. Western Carolina	92
6. Chattanooga	36	6. Samford	6	Chattanooga	92
7. Western Carolina	27	7. Chattanooga	5	7. ETSU	72
Sac bunts		Sac flies		Stolen bases	
1. Mercer	17	1. Furman	6	1. Furman	32
2. Chattanooga	15	2. Chattanooga	5	2. ETSU	17
3. Samford	11	3. ETSU	4	3. Western Carolina	15
4. Western Carolina	7	4. Mercer	3	4. Chattanooga	14
Furman	7	5. UNCG	2	Mercer	14
6. UNCG	6	6. Samford	1	6. Samford	10
7. ETSU	2	Western Carolina	1	7. UNCG	2
Caught stealing		Steal attempts		Grounded into DP	
1. Western Carolina	6	1. Furman	38	1. ETSU	7
Furman	6	2. Western Carolina	21	Samford	7
3. Mercer	5	3. Mercer	19	3. Furman	3
4. Chattanooga	3	ETSU	19	4. Western Carolina	2
5. ETSU	2	5. Chattanooga	17	5. UNCG	1
6. Samford	1	6. Samford	11		
UNCG	1	7. UNCG	3		

The Automated ScoreBook
SoCon Pitching Leaders (as of Mar 09, 2023)
(All games)

Hitting minimums - 1 Games 50% of Games 2.0 AB/Game 2.5 TPA/Game
Pitching minimums - 1 Games 1.0 IP/Game

Earned run avg		Opposing bat avg		Innings pitched	
1. Samford	2.33	1. Chattanooga	.234	1. Furman	142.2
2. Chattanooga	2.88	2. UNCG	.250	2. Samford	138.0
3. UNCG	3.08	3. Samford	.261	3. UNCG	134.0
4. Western Carolina	4.03	4. Furman	.280	4. Mercer	121.2
5. ETSU	4.23	5. Western Carolina	.292	5. ETSU	109.1
6. Furman	4.27	6. ETSU	.292	6. Chattanooga	102.0
7. Mercer	6.79	7. Mercer	.303	7. Western Carolina	92.0
Batters struck out		Batters SO out looking		Wins	
1. Samford	121	1. Samford	28	1. UNCG	13
2. Chattanooga	105	2. UNCG	26	2. Chattanooga	9
3. UNCG	101	3. Mercer	24	3. Samford	6
4. Furman	76	4. ETSU	23	4. Western Carolina	5
5. Mercer	74	5. Chattanooga	21	Mercer	5
6. Western Carolina	71	6. Furman	16	Furman	5
7. ETSU	69	7. Western Carolina	14	7. ETSU	3
Losses		Saves		Runners picked off	
1. Furman	16	1. Chattanooga	2	1. Western Carolina	1
2. Samford	14	UNCG	2	ETSU	1
3. ETSU	13	Mercer	2		
Mercer	13	4. Samford	1		
5. Western Carolina	9				
6. UNCG	8				
7. Chattanooga	5				
Sac bunts allowed		Sac flies allowed		Hits allowed	
1. Samford	19	1. Chattanooga	8	1. Chattanooga	86
2. Chattanooga	14	2. UNCG	7	2. Western Carolina	110
3. Mercer	10	ETSU	7	3. ETSU	128
Furman	10	4. Mercer	6	4. UNCG	129
5. UNCG	9	5. Furman	4	5. Samford	139
6. Western Carolina	7	Samford	4	6. Mercer	159
7. ETSU	4	7. Western Carolina	2	7. Furman	169
Runs allowed		Earned runs allowed		Walks allowed	
1. Chattanooga	52	1. Chattanooga	42	1. Western Carolina	27
2. Western Carolina	59	2. Samford	46	2. Samford	33
3. Samford	64	3. Western Carolina	53	3. UNCG	36
4. UNCG	72	4. UNCG	59	4. Chattanooga	54
5. ETSU	94	5. ETSU	66	5. Furman	63
6. Furman	112	6. Furman	87	6. Mercer	70
7. Mercer	131	7. Mercer	118	7. ETSU	72
Doubles allowed		Triples allowed		Home runs allowed	
1. Chattanooga	15	1. UNCG	0	1. Chattanooga	4
2. Furman	19	2. ETSU	1	2. Western Carolina	7
3. Western Carolina	22	Western Carolina	1	3. UNCG	11
4. UNCG	24	4. Mercer	2	Samford	11
5. Samford	25	5. Chattanooga	3	5. ETSU	12
6. ETSU	26	Samford	3	Furman	12
7. Mercer	31	7. Furman	4	7. Mercer	20
Wild pitches		Balks		Hit batters	
1. Chattanooga	15			1. ETSU	18
2. Mercer	13			2. Chattanooga	15
Samford	13			UNCG	15
4. Furman	12			4. Furman	12
5. ETSU	8			5. Mercer	11
6. UNCG	7			6. Samford	5
7. Western Carolina	6			7. Western Carolina	4

Intentional BB allowed

The Automated ScoreBook
 SoCon Fielding Leaders (as of Mar 09, 2023)
 (All games)

Hitting minimums - 1 Games 50% of Games
 Pitching minimums - 1 Games 1.0 IP/Game

Fielding pct	Chances	Putouts
1. Chattanooga .976	1. Furman 666	1. Furman 428
2. Western Carolina .972	2. Samford 587	2. Samford 414
3. Samford .957	3. UNCG 581	3. UNCG 402
4. UNCG .957	4. Mercer 508	4. Mercer 365
5. ETSU .952	5. ETSU 442	5. ETSU 328
6. Furman .949	6. Chattanooga 420	6. Chattanooga 306
7. Mercer .933	7. Western Carolina 388	7. Western Carolina 276
Assists	Errors	Fielding double plays
1. Furman 204	1. Furman 34	1. UNCG 9
2. UNCG 154	Mercer 34	2. Mercer 6
3. Samford 148	3. Samford 25	3. Samford 5
4. Mercer 109	UNCG 25	Furman 5
5. Chattanooga 104	5. ETSU 21	5. Western Carolina 4
6. Western Carolina 101	6. Western Carolina 11	6. ETSU 3
7. ETSU 93	7. Chattanooga 10	7. Chattanooga 2
Stolen bases against	Caught stealing by	Steal attempts against
1. Furman 41	1. Samford 11	1. Furman 43
2. Mercer 37	2. ETSU 6	2. Mercer 39
3. UNCG 27	UNCG 6	3. UNCG 33
4. ETSU 24	4. Western Carolina 4	4. Samford 32
5. Western Carolina 22	5. Chattanooga 2	5. ETSU 30
6. Samford 21	Mercer 2	6. Western Carolina 26
7. Chattanooga 16	Furman 2	7. Chattanooga 18
Passed balls	Catchers interference	
1. ETSU 8		
2. Mercer 6		
3. Samford 4		
Chattanooga 4		
5. UNCG 2		
6. Western Carolina 1		

The Automated ScoreBook
SoCon Batting Leaders (as of Mar 09, 2023)
(All games)

Hitting minimums - 1 Games 50% of Games 2.0 AB/Game 2.5 TPA/Game
Pitching minimums - 1 Games 1.0 IP/Game

Batting avg		Slugging pct		On base pct	
1. Riley Ludlam-FUR	.392	1. Riley Ludlam-FUR	.765	1. Delaney Cumbie-UNCG	.558
2. Sara Muir-ETSU	.383	2. Sara Muir-ETSU	.702	2. Sara Muir-ETSU	.508
3. Brooklynn Brewington-WCU	.367	3. Delaney Cumbie-UNCG	.673	3. Olivia Lipari-UTC	.468
4. Rebeca Laudino-MER	.362	4. Adison Keylon-UTC	.645	4. Kaili Phillips-UTC	.459
5. Delaney Cumbie-UNCG	.346	5. Logan Champion-SAM	.638	5. Riley Ludlam-FUR	.450
6. Olivia Lipari-UTC	.342	6. Maycin Brown-UNCG	.619	6. Hana Hashioka-FUR	.439
7. Emily Coltharp-UTC	.340	7. Kiley Perry-FUR	.571	7. Rebeca Laudino-MER	.422
8. Riley Nayadley-ETSU	.333	8. Emily Coltharp-UTC	.540	8. Brooklynn Maxwell-UNCG	.417
Cameron Young-ETSU	.333	9. Riley Nayadley-ETSU	.533	9. Jessie Shipley-UNCG	.410
10. Logan Champion-SAM	.328	10. Tory Hedgecock-MER	.521	10. Logan Champion-SAM	.400
Runs scored		Hits		Runs batted in	
1. Delaney Cumbie-UNCG	19	1. Ashlee Lykins-FUR	25	1. Maycin Brown-UNCG	21
2. Ashlee Lykins-FUR	18	2. Rebeca Laudino-MER	21	2. Riley Ludlam-FUR	18
3. Maycin Brown-UNCG	17	3. Kiley Perry-FUR	20	3. Kiley Perry-FUR	16
4. Hana Hashioka-FUR	12	Riley Nayadley-ETSU	20	4. Sylvia Burroughs-FUR	13
Kiley Perry-FUR	12	Riley Ludlam-FUR	20	5. Jorde Chartrand-UNCG	12
6. 6 tied at.....	11	6. Logan Champion-SAM	19	6. Grier Bruce-SAM	11
		Cameron Young-ETSU	19	Sara Muir-ETSU	11
		8. 5 tied at.....	18	Acelynn Sellers-UTC	11
				Riley Nayadley-ETSU	11
				10. 2 tied at.....	10
Doubles		Triples		Home runs	
1. Brooklynn Maxwell-UNCG	8	1. Ainsley Yoshizumi-FUR	3	1. Maycin Brown-UNCG	7
2. Riley Ludlam-FUR	7	2. Emily Coltharp-UTC	2	2. Sara Muir-ETSU	5
Logan Champion-SAM	7	3. Maycin Brown-UNCG	1	Kiley Perry-FUR	5
4. Blayke Batten-UNCG	6	Brooklynn Maxwell-UNCG	1	4. Delaney Cumbie-UNCG	4
Emily Coltharp-UTC	6	Ashley Gontram-UNCG	1	Riley Ludlam-FUR	4
6. Delaney Cumbie-UNCG	5	Sarah Squillace-SAM	1	Adison Keylon-UTC	4
Kiley Perry-FUR	5	MaKayla Strickland-ETSU	1	Grier Bruce-SAM	4
8. 6 tied at.....	4	Hana Hashioka-FUR	1	Tory Hedgecock-MER	4
		Olivia Lipari-UTC	1	9. 5 tied at.....	3
		Logan Champion-SAM	1		
Total bases		Walks		Hit by pitch	
1. Kiley Perry-FUR	40	1. Delaney Cumbie-UNCG	19	1. Hana Hashioka-FUR	11
2. Maycin Brown-UNCG	39	2. Samantha Lagrama-UNCG	13	2. Delaney Cumbie-UNCG	6
Riley Ludlam-FUR	39	Brooklynn Maxwell-UNCG	13	3. Sophie Sumner-MER	4
4. Logan Champion-SAM	37	Jessie Shipley-UNCG	13	Rebeca Laudino-MER	4
5. Delaney Cumbie-UNCG	35	5. Sara Muir-ETSU	12	Maycin Brown-UNCG	4
6. Sara Muir-ETSU	33	6. Tory Hedgecock-MER	11	6. Ansley Yantis-SAM	3
Grier Bruce-SAM	33	Ansley Yantis-SAM	11	Ainsley Yoshizumi-FUR	3
8. Riley Nayadley-ETSU	32	8. Olivia Lipari-UTC	9	Lillian Wilkerson-MER	3
9. Jorde Chartrand-UNCG	29	Riley Kokinda-UTC	9	9. 10 tied at.....	2
10. 3 tied at.....	27	10. Sylvia Burroughs-FUR	8		
Sac bunts		Sac flies		Stolen bases	
1. Bailey Ledvina-MER	6	1. Katie Helm-MER	2	1. Kemiah Michel-ETSU	8
2. Lillian Wilkerson-MER	4	Blayke Batten-UNCG	2	2. Ashlee Lykins-FUR	7
Sarah Squillace-SAM	4	Kiley Perry-FUR	2	3. Caitlin Goldwait-FUR	5
Caitlin Goldwait-FUR	4	Emily Coltharp-UTC	2	Alyssa Woods-MER	5
5. Zoe Wright-UTC	3	Sara Muir-ETSU	2	Hana Hashioka-FUR	5
Adison Keylon-UTC	3	Riley Ludlam-FUR	2	Rebeca Laudino-MER	5
Parris Wiggs-MER	3	7. 10 tied at.....	1	7. Emily Coltharp-UTC	4
Ansley Yantis-SAM	3			Ainsley Yoshizumi-FUR	4
9. 6 tied at.....	2			Brooklynn Brewington-WCU	4
				10. 6 tied at.....	3

Total plate appearances	
1. Ashlee Lykins-FUR	85
2. Ainsley Yoshizumi-FUR	78
Kiley Perry-FUR	78
4. Delaney Cumbie-UNCG	77
5. Maycin Brown-UNCG	74
6. Brooklynn Maxwell-UNCG	73
7. Caitlin Goldwait-FUR	69
Sarah Squillace-SAM	69
9. Grier Bruce-SAM	68
10. Merritt Cahoon-SAM	67

Strikeouts	
1. Sarah Squillace-SAM	20
2. Alyssa Woods-MER	17
3. Ainsley Yantis-SAM	16
4. Kiley Perry-FUR	14
Sara Bond-SAM	14
Adison Keylon-UTC	14
7. Rebeca Laudino-MER	13
Lindsey Nelson-SAM	13
Jessie Shipley-UNCG	13
10. 5 tied at.....	12

At bats	
1. Ashlee Lykins-FUR	79
2. Kiley Perry-FUR	70
3. Ainsley Yoshizumi-FUR	69
4. Grier Bruce-SAM	65
5. Maycin Brown-UNCG	63
6. Caitlin Goldwait-FUR	60
Riley Nayadley-ETSU	60
Merritt Cahoon-SAM	60
9. Brooklynn Maxwell-UNCG	59
10. 2 tied at.....	58

Caught stealing	
1. Rebeca Laudino-MER	3
Brooklynn Brewington-WCU	3
3. Ainsley Yoshizumi-FUR	2
Hana Hashioka-FUR	2
5. 14 tied at.....	1

Steal attempts	
1. Kemiah Michel-ETSU	9
2. Rebeca Laudino-MER	8
Ashlee Lykins-FUR	8
4. Brooklynn Brewington-WCU	7
Hana Hashioka-FUR	7
6. Alyssa Woods-MER	6
Ainsley Yoshizumi-FUR	6
8. Caitlin Goldwait-FUR	5
9. 3 tied at.....	4

Grounded into DP	
1. Merritt Cahoon-SAM	3
2. Kiley Perry-FUR	2
3. 15 tied at.....	1

The Automated ScoreBook
SoCon Pitching Leaders (as of Mar 09, 2023)
(All games)

Hitting minimums - 1 Games 50% of Games 2.0 AB/Game 2.5 TPA/Game
Pitching minimums - 1 Games 1.0 IP/Game

Earned run avg		Opposing bat avg		Innings pitched	
1. Taylor Long-UTC	1.30	1. Taylor Long-UTC	.189	1. McKenzie Newcomb-SAM	64.2
2. McKenzie Newcomb-SAM	1.52	2. Salem Ward-UNCG	.193	2. Sierra Tufts-FUR	54.0
3. Salem Ward-UNCG	2.07	3. Brianna Bailey-ETSU	.221	3. Grace Taylor-MER	49.1
4. Lainey Baker-SAM	2.25	4. Brooke Parrott-UTC	.228	4. Emme Buzhardt-FUR	45.1
5. Alyssa Lavdis-UTC	2.38	5. Emme Buzhardt-FUR	.231	5. Katie Rearley-MER	43.2
6. Maddie Spell-UNCG	2.39	6. Jorde Chartrand-UNCG	.232	Jorde Chartrand-UNCG	43.2
7. Sara Muir-ETSU	2.40	7. Alyssa Lavdis-UTC	.235	7. Maddie Spell-UNCG	41.0
8. Peja Goold-UTC	2.45	8. McKenzie Newcomb-SAM	.246	8. Brianna Bailey-ETSU	39.2
9. Brianna Bailey-ETSU	2.47	9. Sierra Tufts-FUR	.247	9. Lauralee Scott-FUR	36.0
10. Emme Buzhardt-FUR	3.09	10. Tessa Juett-WCU	.258	10. Tessa Juett-WCU	34.0
Batters struck out		Batters SO out looking		Wins	
1. McKenzie Newcomb-SAM	78	1. McKenzie Newcomb-SAM	21	1. Rhyann Jones-UNCG	4
2. Jorde Chartrand-UNCG	42	2. Brianna Bailey-ETSU	13	2. Taylor Long-UTC	3
3. Katie Rearley-MER	34	3. Grace Taylor-MER	12	Salem Ward-UNCG	3
Sierra Tufts-FUR	34	4. Sierra Tufts-FUR	10	Maddie Spell-UNCG	3
Taylor Long-UTC	34	Katie Rearley-MER	10	Brianna Bailey-ETSU	3
Brianna Bailey-ETSU	34	6. Taylor Long-UTC	9	Jorde Chartrand-UNCG	3
7. Peja Goold-UTC	27	7. Maddie Spell-UNCG	8	Sierra Tufts-FUR	3
8. Grace Taylor-MER	25	8. Jorde Chartrand-UNCG	7	8. 9 tied at.....	2
Tessa Juett-WCU	25	Salem Ward-UNCG	7		
10. Maddie Spell-UNCG	24	10. 3 tied at.....	6		
Saves		Appearances		Games started	
1. Jorde Chartrand-UNCG	2	1. Grace Taylor-MER	16	1. Grace Taylor-MER	11
2. Peja Goold-UTC	1	2. Katie Rearley-MER	14	2. Sierra Tufts-FUR	9
Chloe Poss-SAM	1	3. Sierra Tufts-FUR	13	3. Lauralee Scott-FUR	8
Katie Rearley-MER	1	4. McKenzie Newcomb-SAM	12	4. Katie Rearley-MER	7
Grace Taylor-MER	1	Jorde Chartrand-UNCG	12	Maddie Spell-UNCG	7
Brooke Parrott-UTC	1	6. Emme Buzhardt-FUR	11	Brianna Bailey-ETSU	7
		Brianna Bailey-ETSU	11	7. Lainey Baker-SAM	6
		8. Lauralee Scott-FUR	10	Jorde Chartrand-UNCG	6
		Lainey Baker-SAM	10	Rhyann Jones-UNCG	6
		10. 2 tied at.....	9	McKenzie Newcomb-SAM	6
Games finished		Games in relief		Sac bunts allowed	
1. Emme Buzhardt-FUR	8	1. Emme Buzhardt-FUR	8	1. Sierra Tufts-FUR	7
2. Madi Wicker-MER	6	2. Katie Rearley-MER	7	McKenzie Newcomb-SAM	7
McKenzie Newcomb-SAM	6	Madi Wicker-MER	7	Jordyn Partain-SAM	7
4. Grace Taylor-MER	5	Riley Hickok-MER	7	4. Grace Taylor-MER	6
5. Brianna Bailey-ETSU	4	5. Jorde Chartrand-UNCG	6	5. Taylor Long-UTC	5
Sierra Tufts-FUR	4	McKenzie Newcomb-SAM	6	6. Peja Goold-UTC	4
Jorde Chartrand-UNCG	4	7. 6 tied at.....	5	7. 7 tied at.....	3
Katie Rearley-MER	4				
Taylor Long-UTC	4				
Salem Ward-UNCG	4				
Sac flies allowed		Losses		Runners picked off	
1. Brooke Parrott-UTC	4	1. Grace Taylor-MER	8	1. Mattie Mentel-WCU	1
2. Makayla Cooper-ETSU	3	2. Sierra Tufts-FUR	6	Kaylee Higgins-ETSU	1
Grace Taylor-MER	3	3. McKenzie Newcomb-SAM	5		
Peja Goold-UTC	3	Lauralee Scott-FUR	5		
Maddie Spell-UNCG	3	5. Emme Buzhardt-FUR	4		
6. Jorde Chartrand-UNCG	2	Jorde Chartrand-UNCG	4		
Sara Muir-ETSU	2	7. 10 tied at.....	3		
Katie Rearley-MER	2				
Emme Buzhardt-FUR	2				
Jordyn Partain-SAM	2				

Wild pitches		
1. Emme Buzhardt-FUR		7
2. Jordyn Partain-SAM		6
3. Taylor Long-UTC		5
Lauralee Scott-FUR		5
5. Madi Wicker-MER		4
Peja Goold-UTC		4
Sara Muir-ETSU		4
Riley Hickok-MER		4
Grace Taylor-MER		4
10. 6 tied at.....		3

Intentional BB allowed		
------------------------	--	--

Earned runs allowed		
1. Taylor Long-UTC		5
2. Alyssa Lavdis-UTC		6
3. Salem Ward-UNCG		7
4. Sara Muir-ETSU		8
5. Lainey Baker-SAM		9
Peja Goold-UTC		9
7. Jayme Eilers-WCU		10
8. Brooke Parrott-UTC		11
9. Jordyn Partain-SAM		12
10. Rhyann Jones-UNCG		13

Triples allowed		
1. McKenzie Newcomb-SAM		0
Katie Rearley-MER		0
Maddie Spell-UNCG		0
Tessa Juett-WCU		0
Jorde Chartrand-UNCG		0
Alyssa Lavdis-UTC		0
Rhyann Jones-UNCG		0
Jayme Eilers-WCU		0
Sara Muir-ETSU		0
Sierra Tufts-FUR		0

Balks		
-------	--	--

Hits allowed		
1. Alyssa Lavdis-UTC		16
Salem Ward-UNCG		16
3. Taylor Long-UTC		17
4. Brooke Parrott-UTC		18
5. Jayme Eilers-WCU		23
6. Peja Goold-UTC		24
7. Jordyn Partain-SAM		26
8. Lainey Baker-SAM		30
Rhyann Jones-UNCG		30
10. Sara Muir-ETSU		31

Walks allowed		
1. Maddie Spell-UNCG		5
Taylor Norton-WCU		5
Salem Ward-UNCG		5
Brooke Parrott-UTC		5
5. Jayme Eilers-WCU		6
6. McKenzie Newcomb-SAM		7
7. Lainey Baker-SAM		8
Alyssa Lavdis-UTC		8
9. Rhyann Jones-UNCG		9
10. Jordyn Partain-SAM		12

Home runs allowed		
1. Taylor Long-UTC		0
Salem Ward-UNCG		0
Sara Muir-ETSU		0
Alyssa Lavdis-UTC		0
5. Tessa Juett-WCU		1
Peja Goold-UTC		1
Taylor Norton-WCU		1
Lainey Baker-SAM		1
Jordyn Partain-SAM		1
10. Rhyann Jones-UNCG		2

Hit batters		
-------------	--	--

1. Whitley Arnott-ETSU		7
Taylor Long-UTC		7
3. Salem Ward-UNCG		6
4. Katie Rearley-MER		5
Emme Buzhardt-FUR		5
6. Taylor Suchy-ETSU		4
Rhyann Jones-UNCG		4
Lauralee Scott-FUR		4
Jorde Chartrand-UNCG		4
10. 4 tied at.....		3

Runs allowed		
1. Taylor Long-UTC		5
2. Alyssa Lavdis-UTC		7
3. Salem Ward-UNCG		9
4. Jayme Eilers-WCU		11
5. Lainey Baker-SAM		12
Brooke Parrott-UTC		12
7. Peja Goold-UTC		13
8. Jordyn Partain-SAM		15
9. Brianna Bailey-ETSU		16
10. Rhyann Jones-UNCG		18

Doubles allowed		
1. Maddie Spell-UNCG		2
2. Taylor Long-UTC		3
Alyssa Lavdis-UTC		3
4. Brooke Parrott-UTC		4
Peja Goold-UTC		4
Taylor Norton-WCU		4
Emme Buzhardt-FUR		4
8. Salem Ward-UNCG		5
Jordyn Partain-SAM		5
10. Brianna Bailey-ETSU		6

The Automated ScoreBook
SoCon Fielding Leaders (as of Mar 09, 2023)
(All games)

Hitting minimums - 1 Games 50% of Games
Pitching minimums - 1 Games 1.0 IP/Game

Fielding pct		Chances		Putouts	
1. Riley Ludlam-FUR	1.000	1. Kiley Perry-FUR	186	1. Kiley Perry-FUR	179
Emily Coltharp-UTC	1.000	2. Merritt Cahoon-SAM	141	2. Merritt Cahoon-SAM	135
Kendal Pitts-ETSU	1.000	3. Logan Champion-SAM	138	3. Logan Champion-SAM	121
Olivia Lipari-UTC	1.000	4. Tory Hedgecock-MER	118	4. Tory Hedgecock-MER	106
Brooklynn Brewington-WCU	1.000	5. Delaney Cumbie-UNCG	109	5. Delaney Cumbie-UNCG	100
Bethany Dobias-WCU	1.000	6. Jayce Purdy-UTC	95	6. Jayce Purdy-UTC	87
Grace Loftin-UNCG	1.000	7. Bailey Ledvina-MER	90	7. Samantha Lagrama-UNCG	84
Parris Wiggs-MER	1.000	8. Acelynn Sellers-UTC	89	Acelynn Sellers-UTC	84
Blayke Batten-UNCG	1.000	Hana Hashioka-FUR	89	9. Samantha Reelee-WCU	66
Presley Williamson-UTC	1.000	10. Samantha Lagrama-UNCG	88	10. 2 tied at.....	63
Assists		Fielding double plays		Passed balls	
1. Hana Hashioka-FUR	53	1. Maycin Brown-UNCG	7	1. Kaylee Higgins-ETSU	6
2. Chloe Fabio-FUR	50	2. Merritt Cahoon-SAM	5	2. Logan Champion-SAM	4
3. Alex Rose Molinar-FUR	46	Kiley Perry-FUR	5	3. Lillian Wilkerson-MER	3
4. Brooklynn Maxwell-UNCG	42	Tory Hedgecock-MER	5	Sophie Sumner-MER	3
5. Sarah Squillace-SAM	41	5. Anna White-UNCG	4	Jayce Purdy-UTC	3
6. Ansley Yantis-SAM	39	Jessie Shipley-UNCG	4	6. Delaney Cumbie-UNCG	2
7. Bailey Ledvina-MER	37	7. 5 tied at.....	3	7. Presley Williamson-UTC	1
8. Jessie Shipley-UNCG	35			Amber Atkins-ETSU	1
9. Maycin Brown-UNCG	33			Samantha Reelee-WCU	1
10. Bailey Huneycutt-WCU	32			Makenzie Henderson-ETSU	1
Catchers interference		Steal attempts against		Stolen bases against	
		1. Logan Champion-SAM	31	1. Riley Ludlam-FUR	26
		2. Riley Ludlam-FUR	28	2. Sophie Sumner-MER	23
		3. Delaney Cumbie-UNCG	26	3. Delaney Cumbie-UNCG	22
		4. Sophie Sumner-MER	24	4. Samantha Reelee-WCU	20
		Samantha Reelee-WCU	24	Logan Champion-SAM	20
		6. Kaylee Higgins-ETSU	19	6. Grace Taylor-MER	16
		7. Grace Taylor-MER	17	7. Lauralee Scott-FUR	15
		8. Sierra Tufts-FUR	16	Hana Suniga-FUR	15
		9. 6 tied at.....	15	Sierra Tufts-FUR	15
				10. 2 tied at.....	14
Caught stealing by		Errors			
1. Logan Champion-SAM	11	1. Brooklynn Maxwell-UNCG	9		
2. McKenzie Newcomb-SAM	5	2. Bailey Ledvina-MER	8		
Kaylee Higgins-ETSU	5	3. Maycin Brown-UNCG	7		
4. Jordyn Partain-SAM	4	Rebeca Laudino-MER	7		
Samantha Reelee-WCU	4	5. Alex Rose Molinar-FUR	6		
Brianna Bailey-ETSU	4	Ansley Yantis-SAM	6		
Delaney Cumbie-UNCG	4	Sarah Squillace-SAM	6		
8. Tessa Juett-WCU	3	8. 4 tied at.....	5		
9. 5 tied at.....	2				

The Automated ScoreBook
Game Highs for SoCon (as of Mar 09, 2023)
(All games)

TEAM GAME HIGHS

Batting

At bats:	44	-	Furman (vs Mississippi State, Feb 25, 2023)
Runs scored:	14	-	Mercer (vs Robert Morris, Mar 04, 2023)
Hits:	17	-	East Tennessee State (vs Penn, Feb 26, 2023)
RBIs:	12	-	UNC Greensboro (vs Charleston Southern, Mar 08, 2023)
Doubles:	6	-	UNCG (vs Binghamton, Feb 12, 2023)
Triples:	2	-	UNCG (vs Long Island, Feb 10, 2023)
Home runs:	4	-	UNC Greensboro (vs Indiana, Feb 25, 2023)
Total bases:	24	-	East Tennessee State (vs Penn, Feb 26, 2023)
Walks:	10	-	Mercer (vs Robert Morris, Mar 04, 2023)
Strikeouts:	15	-	Western Carolina (vs Northern Iowa, Feb 26, 2023)
Sac hits:	4	-	Mercer (vs Fairfield, Feb 19, 2023)
Sac flies:	4	-	Chattanooga (vs Harvard, Mar 05, 2023)
Stolen bases:	2	-	East Tennessee State (vs George Washington, Feb 17, 2023)
Caught stealing:	2	-	Chattanooga (vs Detroit Mercy, Mar 05, 2023)
Hit by pitch:	2	-	Chattanooga (vs Akron, Feb 26, 2023)
Runners LOB:	4	-	Furman (vs Bellarmine, Feb 19, 2023)
Hit into DP:	2	-	Furman (vs Gardner-Webb, Feb 21, 2023)
	3	-	(7 times)
	14	-	Furman (vs Presbyterian, Mar 07, 2023)
	2	-	(7 times)

Fielding

Putouts:	34	-	Furman (vs Mississippi State, Feb 25, 2023)
Assists:	16	-	Furman (vs NC Central, Mar 03, 2023)
Errors:	16	-	Western Carolina (vs Tennessee State, Feb 25, 2023)
Passed balls:	6	-	Mercer (vs Hampton, Feb 12, 2023)
DPs turned:	2	-	Mercer (vs Belmont, Feb 25, 2023)
	2	-	ETSU (vs APPSTATE, Feb 28, 2023)
	2	-	ETSU (vs Ball State, Mar 08, 2023)
	2	-	Western Carolina (vs USC Upstate, Mar 01, 2023)

Pitching

Innings pitched:	11.1	-	Furman (vs Mississippi State, Feb 25, 2023)
Strikeouts:	15	-	Chattanooga (vs Detroit Mercy, Mar 05, 2023)
Hits allowed:	2	-	Samford (vs Lindenwood, Feb 18, 2023)
Wild pitches:	2	-	East Tennessee State (vs Penn, Feb 25, 2023)
Hit batters:	2	-	Western Carolina (vs Tennessee Tech, Feb 10, 2023)
	4	-	Chattanooga (vs Maine, Feb 19, 2023)
	5	-	ETSU (vs Campbell, Feb 10, 2023)

The Automated ScoreBook
Game Highs for SoCon (as of Mar 09, 2023)
(All games)

GAME HIGHS (BOTH TEAMS)

Batting

At bats:	44	-	Furman vs Mississippi State (Feb 25, 2023)
Runs scored:	14	-	Mercer vs Robert Morris (Mar 04, 2023)
Hits:	17	-	East Tennessee State vs Penn (Feb 26, 2023)
RBIs:	12	-	UNC Greensboro vs Charleston Southern (Mar 08, 2023)
Doubles:	6	-	UNCG vs Binghamton (Feb 12, 2023)
Triples:	2	-	Long Island vs UNCG (Feb 10, 2023)
Home runs:	4	-	Indiana vs UNC Greensboro (Feb 25, 2023)
Total bases:	24	-	East Tennessee State vs Penn (Feb 26, 2023)
Walks:	10	-	Mercer vs Robert Morris (Mar 04, 2023)
Strikeouts:	15	-	Western Carolina vs Northern Iowa (Feb 26, 2023)
Sac hits:	4	-	Fairfield vs Mercer (Feb 19, 2023)
	4	-	Harvard vs Chattanooga (Mar 05, 2023)
Sac flies:	2	-	East Tennessee State vs George Washington (Feb 17, 2023)
	2	-	Detroit Mercy vs Chattanooga (Mar 05, 2023)
	2	-	Akron vs Chattanooga (Feb 26, 2023)
Stolen bases:	4	-	Bellarmino vs Furman (Feb 19, 2023)
Caught stealing:	2	-	Furman vs Gardner-Webb (Feb 21, 2023)
Hit by pitch:	3	-	(7 times)
Runners LOB:	14	-	Furman vs Presbyterian (Mar 07, 2023)
Hit into DP:	2	-	(7 times)

Fielding

Putouts:	34	-	Furman vs Mississippi State (Feb 25, 2023)
Assists:	16	-	Furman vs NC Central (Mar 03, 2023)
	16	-	Western Carolina vs Tennessee State (Feb 25, 2023)
Errors:	6	-	Hampton vs Mercer (Feb 12, 2023)
Passed balls:	2	-	Ball State vs ETSU (Mar 08, 2023)
	2	-	Belmont vs Mercer (Feb 25, 2023)
	2	-	APPSTATE vs ETSU (Feb 28, 2023)
DPs turned:	2	-	(7 times)

Pitching

Innings pitched:	11.1	-	Furman vs Mississippi State (Feb 25, 2023)
Strikeouts:	15	-	Detroit Mercy vs Chattanooga (Mar 05, 2023)
Hits allowed:	2	-	Tennessee Tech vs Western Carolina (Feb 10, 2023)
	2	-	Penn vs East Tennessee State (Feb 25, 2023)
	2	-	Lindenwood vs Samford (Feb 18, 2023)
Wild pitches:	4	-	Maine vs Chattanooga (Feb 19, 2023)
Hit batters:	5	-	ETSU vs Campbell (Feb 10, 2023)

The Automated ScoreBook
Game Highs for SoCon (as of Mar 09, 2023)
(All games)

INDIVIDUAL GAME HIGHS

Batting

At bats:	6	-	Yoshizumi, Furman (vs Mississippi State, Feb 25, 2023)
Runs scored:	3	-	(9 times)
Hits:	4	-	R. Nayadley, East Tennessee State (vs Penn, Feb 26, 2023)
	4	-	S. Muir, East Tennessee State (vs Penn, Feb 26, 2023)
	4	-	Wright, Chattanooga (vs Sacred Heart, Mar 04, 2023)
RBIs:	6	-	G. Loftin, UNCG (vs Binghamton, Feb 12, 2023)
Doubles:	2	-	(7 times)
Triples:	1	-	(13 times)
Home runs:	2	-	(4 times)
Total bases:	9	-	Bruce, Samford (vs IUPUI, Feb 24, 2023)
Walks:	3	-	G. Loftin, UNC Greensboro (vs Elon, Mar 04, 2023)
	3	-	Kokinda, Chattanooga (vs Harvard, Mar 05, 2023)
Strikeouts:	3	-	(13 times)
Sac hits:	2	-	(5 times)
Sac flies:	2	-	S. Muir, East Tennessee State (vs George Washington, Feb 17, 2023)
Stolen bases:	2	-	(6 times)
Caught stealing:	1	-	(24 times)
Hit by pitch:	2	-	(5 times)
Runners LOB:	6	-	Perry, Furman (vs Presbyterian, Mar 07, 2023)

Fielding

Putouts:	16	-	Purdy, Chattanooga (vs Detroit Mercy, Mar 05, 2023)
Assists:	9	-	Molinar, Furman (vs NC Central, Mar 03, 2023)
Errors:	3	-	T.Hedgecock, Mercer (vs Hampton, Feb 12, 2023)
Passed balls:	2	-	K. Higgins, ETSU (vs APPSTATE, Feb 28, 2023)
	2	-	S.Sumner, Mercer (vs Belmont, Feb 25, 2023)

Pitching

Innings pitched:	9.0	-	Goold, Chattanooga (vs Akron, Feb 26, 2023)
Strikeouts:	15	-	Lavdis, Chattanooga (vs Detroit Mercy, Mar 05, 2023)
Wild pitches:	3	-	Partain, Samford (vs Southern Miss, Feb 12, 2023)
Hit batters:	4	-	W. Arnott, ETSU (vs Campbell, Feb 10, 2023)