



SOUTHERN CONFERENCE SOFTBALL



702 North Pine Street, Spartanburg, SC 29303 • 864-591-5100 • Fax: 864-591-3448
Ralan Wardlaw, Assistant Director of Media Relations (SB contact)
facebook.com/SouthernConference • twitter.com/SoConSports • instagram.com/SouthernConference

2023 SOUTHERN CONFERENCE SOFTBALL STANDINGS

	Conference					Overall					
	W-L	Pct.	H	A	ST	W-L	Pct.	H	A	N	ST
Chattanooga	0-0	0.000	0-0	0-0	---	14-8	.636	4-4	0-1	10-3	L1
UNCG	0-0	0.000	0-0	0-0	---	14-12	.538	8-6	2-4	4-2	L4
Western Carolina	0-0	0.000	0-0	0-0	---	7-12	.368	1-0	3-9	3-3	L3
Samford	0-0	0.000	0-0	0-0	---	9-16	.360	5-5	1-7	3-4	L1
Mercer	0-0	0.000	0-0	0-0	---	8-18	.308	2-7	0-7	6-4	W1
Furman	0-0	0.000	0-0	0-0	---	7-17	.292	4-3	2-7	1-7	L1
ETSU	0-0	0.000	0-0	0-0	---	6-18	.250	3-4	1-6	2-8	W1

UPCOMING SCHEDULE (ALL TIMES EASTERN)

March 17 (Friday)

Samford vs. St. Thomas, 11:30 a.m.¹
Eastern Illinois at ETSU, Noon
Chattanooga at Florida Gulf Coast, 3 p.m.
Army at UNCG, 1:30 p.m.²
Chattanooga at Florida Gulf Coast, 7:30 p.m.
Samford at Ole Miss, 4:30 p.m.¹

March 18 (Saturday)

Samford vs. North Dakota State, 11:30 a.m.¹
Gardner-Webb at UNCG, 1:30 p.m.²
Samford vs. St. Thomas, 2 p.m.¹
Army at UNCG, 4 p.m.²

March 19 (Sunday)

Gardner-Webb at UNCG, 1:30 p.m.²

¹ - Ole Miss Tournament (Oxford, Miss.)

² - Spartan Classic (Greensboro, N.C.)

March 21 (Tuesday)

Western Carolina at Gardner-Webb, 3 p.m.
Western Carolina at Gardner-Webb, 5 p.m.

March 22 (Wednesday)

Samford at North Alabama, TBA
Furman at South Carolina, 3 p.m.
Mercer at Georgia State, 3 p.m.
Furman at South Carolina, 5 p.m.
Mercer at Georgia State, 5 p.m.

March 23 (Thursday)

Towson at UNCG, 4 p.m.

SoCon PLAYER OF THE WEEK (3/13)

Brooklynn Brewington, Sr., OF, Western Carolina

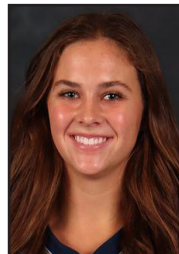
Western Carolina's Brewington hit .455 over six games last week as the Catamounts went 4-2 on a week-long trip to the state of California. On Tuesday, Brewington, who served as the squad's leadoff batter, was 1-for-4 as she drove in the game's lone run in the third inning of Western Carolina's 1-0 win over UC San Diego. The next day in a doubleheader at UC Riverside, the Andrews, South Carolina, native went a combined 4-for-8 with a run scored and another RBI as Western Carolina won game one, 5-2, and fell 6-2 in the second contest. On Friday, Brewington was 3-for-4 with an RBI and two runs scored in Western Carolina's 8-4 win over Yale in the first day of the San Diego Classic. On the final day of the tournament on Sunday, the senior had another two hits, a walk and a stolen base as the Catamounts defeated Yale, 2-1, and fell to San Diego 8-1.



SoCon PITCHER OF THE WEEK (3/13)

Peja Goold, Fr., Chattanooga

Chattanooga's Goold had two appearances with one start last weekend as the Mocs competed in the Madeira Beach Invitational in Madeira Beach, Florida. The freshman from Stockton, California, pitched four innings in relief, throwing two strikeouts and allowing zero runs as the Mocs fell 6-0 to Iowa on Friday. On Sunday, Goold threw 7 1/3 innings during Chattanooga's 2-1 extra-inning win over Lafayette as she had a season-high 12 strikeouts and allowed zero earned runs against the Leopards. Goold recorded a 0.00 ERA with an opponent batting average of .146 in her two appearances for the week.



NOTES

• Samford and UNCG are the only two SoCon squads in weekend tournaments. The Bulldogs are in Oxford, Miss., for the Ole Miss Tournament, while UNCG hosts the Spartan Classic

• Chattanooga and UNCG share the lead in wins for the conference after one month of play at 14.

• Chattanooga is leading the league in batting average (.284). The Mocs are second in fielding percentage (.968) and team ERA (2.68).

• Western Carolina outfielder Brooklynn Brewington was named the SoCon player of the week. Brewington is third in the league in batting average. (.379).

• Chattanooga freshman Peja Goold was named Southern Conference pitcher of the week. Goold was the second straight Moc to receive the honor after Alyssa Lavdis won the award a week ago. Goold has a 1.67 ERA, which is second in the league.

• Mercer's Rebeca Laudino is one of the best offensive weapons in the SoCon. Laudino is leading the league in hits (30), second in batting average (.395) and tied for third in stolen bases (7).

• UNCG's duo of Maycin Brown and Delaney Cumbie have been strong at the top of the Spartans lineup. Each player has scored 20 runs, which is tied for the conference lead with Furman's Ashlee Lykins. Brown also leads the SoCon in home runs (8), RBIs (24), and total bases (49).

• ETSU's Sara Muir is in the top 10 in batting average (.328) and top five in ERA (2.08).

• Chattanooga head coach Frank Reed won his 700th win with the Mocs on March 5 when the squad beat the Detroit Mercy 5-0.

• Furman travels to South Carolina for a doubleheader on Wednesday. This is the second straight week that the Paladins will be playing a SEC opponent as the team went to No. 17 Georgia last week.

• UNCG and Western Carolina each take on Gardner-Webb twice this week. Furman and Chattanooga also played against the Big South squad earlier this season.

ACTIVE SoCON CAREER LEADERS

BATTING AVERAGE [Minimum 250 AB]

.358 - Emily Coltharp (190-525); Chattanooga, 2019-pr.

ON-BASE PCT [Minimum 250 AB]

.481 - Delaney Cumbie; UNCG, 2019-pr.

SLUGGING PCT [Minimum 250 AB]

.597 - Bailey Huneycutt; Western Carolina, 2019-pr.

AT BATS

601 - Emily Coltharp ; Chattanooga, 2019-pr.

RUNS SCORED

154 - Delaney Cumbie; UNCG, 2019-pr.

HITS

215 - Emily Coltharp ; Chattanooga, 2019-pr.

RUNS BATTED IN

115 - Bailey Huneycutt; Western Carolina, 2019-pr.

DOUBLES

38 - Riley Ludlam; Furman, 2020-pr.

TRIPLES

4 - Olivia Lipari, Chattanooga, 2022-pr.
4 - Emily Coltharp ; Chattanooga, 2019-pr.

HOME RUNS

39 - Delaney Cumbie; UNCG, 2019-pr.

TOTAL BASES

315 - Delaney Cumbie; UNCG, 2019-pr.

WALKS

146 - Delaney Cumbie; UNCG, 2019-pr.

STOLEN BASES

59 - Emily Coltharp ; Chattanooga, 2019-pr.

STOLEN BASE PCT [Minimum 50 steal attempts]

.855 - Emily Coltharp ; Chattanooga, 2019-pr.

EARNED RUN AVERAGE [Minimum 200 IP]

1.76 - McKenzie Newcomb, Samford, 2022-pr.

WINS

24 - Brooke Parrott, Chattanooga, 2021-pr.
24 - McKenzie Newcomb, Samford, 2022-pr.

SAVES

4 - Brooke Parrott, Chattanooga, 2021-pr.

OPPONENT BATTING AVERAGE [Minimum 200 IP]

.225 - Brooke Parrott, Chattanooga, 2021-pr.

APPEARANCES

78 - Sierra Tufts, Furman, 2021-pr.

GAMES STARTED

67 - Sierra Tufts, Furman, 2021-pr.

COMPLETE GAMES

31 - Jayme Eilers, Western Carolina, 2020-pr.

SHUTOUTS

7 - Jayme Eilers, Western Carolina, 2020-pr.

INNINGS PITCHED

368.0 - Sierra Tufts, Furman, 2021-pr.

STRIKEOUTS

284 - Jayme Eilers, Western Carolina, 2020-pr.

STRIKEOUTS PER 7 INNINGS [Minimum 200 IP]

7.19 - Jayme Eilers (284 so, 276.1 ip, Western Carolina, 2020-pr.

WALKS PER 7 INNINGS [Minimum 200 IP]

0.95 - McKenzie Newcomb (36 bb, 266.0 ip, Samford, 2022-pr.

HITS ALLOWED PER 7 INNINGS [Minimum 200 IP]

5.73 - Brooke Parrott (231 h, 282.0 ip), Chattanooga, 2021-pr.

SoCON PLAYERS OF THE WEEK

Feb. 13 Delaney Cumbie, 5th, C, UNCG
Feb. 20Riley Ludlam, Sr, C, Furman
Feb. 27 Sara Muir, So., P/1B, ETSU
March 6 Delaney Cumbie, 5th, C, UNCG
March 13 ..Brooklynn Brewington, Sr., OF, Western Carolina
March 20.....
March 27.....
April 3.....
April 10.....
April 17.....
April 24.....
May 1.....
May 8.....

SoCON PITCHERS OF THE WEEK

Feb. 13Tessa Juett, So., Western Carolina
Feb. 20Maddie Spell, R-So., UNCG
Feb. 27 McKenzie Newcomb, So., Samford
March 6 Alyssa Lavdis, So., Chattanooga
March 13Peja Goold, Fr., Chattanooga
March 20.....
March 27.....
April 3.....
April 10.....
April 17.....
April 24.....
May 1.....
May 8.....

SoCON PLAYERS OF THE MONTH

February.....Riley Ludlam, Sr, C, Furman
March.....
April.....
May.....

SoCON PITCHERS OF THE MONTH

February..... McKenzie Newcomb, So., Samford
March.....
April.....
May.....

SoCON COACHING RECORDS

Coach, school	Career (yrs.)	School (yrs.)	SoCon (yrs.)
Cheryl Milligan, ETSU (int.)	546-226 (19th)	6-18 (1st)	0-0 (1st)
Stacey Johnson-Whitfield, Furman	29-49 (2nd)	Same	8-10 (2nd)
Lindsay Fico, Mercer	94-116 (5th)	20-52 (2nd)	7-11 (2nd)
Janelle Breneman, UNCG	468-405 (20th)	330-203 (11th)	104-61 (11th)
Kimball Cassidy, Samford	362-161-1 (13th)	41-28 (2nd)	15-3 (2nd)
Frank Reed, Chattanooga	1,181-589 (34th)	701-500 (23rd)	257-132 (23rd)
Jim Cliff, Western Carolina	223-384 (12th)	Same	74-118 (12th)

Preseason predictions

Preseason Poll

Team (first-place votes)	Points
1. Samford (4)	33
2. UNCG (3)	31
3. Chattanooga	28
4. Furman	17
Western Carolina	17
6. Mercer	15
7. ETSU	6

Preseason Player of the Year

Emily Coltharp, Chattanooga, Sr.

Preseason Pitcher of the Year

McKenzie Newcomb, Samford, So.

Preseason All-SoCon First Team

P	McKenzie Newcomb, Samford, So.
P	Brooke Parrott, Chattanooga, Sr.
C	Delaney Cumbie, UNCG, 5th
IF	Rebeca Laudino, Mercer, Sr.
IF	Maycin Brown, UNCG, Sr.
IF	Emily Coltharp, Chattanooga, Sr.
IF	Bailey Huneycutt, Western Carolina, 5th
OF	Ashlee Lykins, Furman, Jr.
OF	Grace Loftin, UNCG, So.
OF	Brooklynn Brewington, Western Carolina, Sr.
DP	Riley Lambert, Western Carolina, Jr.

Preseason Second-Team All-SoCon

P	Sierra Tufts, Furman, Jr.
P	Jordyn Partain, Samford, So.
C	Riley Ludlam, Furman, Sr.
IF	Cameron Young, ETSU, So.
IF	Samantha Lagrama, UNCG, 5th
IF	Gwynnie Hornibrook, Samford, So.
IF	Kailey Snell, Chattanooga, Jr.
IF	Myra Twitty, Western Carolina, Gr.
OF	Caitlin Goldwait, Furman, So.
OF	Alyssa Woods, Mercer, Jr.
OF	Adison Keylon, Chattanooga, Jr.
DP	Kendall Forsythe, Chattanooga, Jr.



ETSU
(6-18, 0-0 SoCon)

F10	vs. Campbell [!]	L, 4-8
F11	vs. Miami (Ohio) [!]	L, 2-3
F11	at Charlotte [!]	L, 2-3
F12	vs. South Carolina [!]	CCD
F16	at South Carolina [^]	L, 2-9
F17	vs. Western Kentucky [^]	L, 1-6
F17	vs. George Washington [^]	L, 2-4
F18	vs. Campbell [^]	L, 3-9
F21	at Radford	L, 1-7
F21	at Radford	L, 5-7
F23	at NC State [%]	W, 5-0
F24	vs. James Madison [%]	L, 2-5
F24	at NC State [%]	L, 2-8
F25	vs. Pennsylvania [%]	W, 5-1
F26	vs. Pennsylvania [%]	W, 7-3
F28	APP STATE	L, 4-5
M8	BALL STATE	W, 3-2
M8	BALL STATE	L, 3-9
M10	vs. Nebraska Omaha \$	L, 1-6
M11	vs. Nebraska Omaha \$	L, 0-6
M11	vs. SE Louisiana \$	L, 2-7
M12	at Mississippi State \$	CCD
M14	MOREHEAD STATE	L, 2-7
M14	MOREHEAD STATE	W, 6-3
M16	EASTERN ILLINOIS	L, 2-5
M16	EASTERN ILLINOIS	W, 3-1
M17	EASTERN ILLINOIS	2:30 p.m.
M25	at UNGC*	TBA
M25	at UNGC*	TBA
M26	at UNGC*	TBA
M28	at Tennessee	6 p.m.
A1	FURMAN*	TBA
A1	FURMAN*	TBA
A2	FURMAN*	TBA
A5	RADFORD	TBA
A5	RADFORD	TBA
A7	at Samford*	TBA
A7	at Samford*	TBA
A8	at Samford*	TBA
A11	at App State	TBA
A15	CHATTANOOGA*	TBA
A15	CHATTANOOGA*	TBA
A16	CHATTANOOGA*	TBA
A18	at Tennessee Tech	TBA
A29	at Western Carolina*	TBA
A29	at Western Carolina*	TBA
A30	at Western Carolina*	TBA
M6	MERCER*	TBA
M6	MERCER*	TBA
M7	MERCER*	TBA
M10-13	at SoCon Championship (Chattanooga, Tenn.)	

! - Charlotte Invitational (Charlotte, N.C.)
 ^ - Carolina Classic (Columbia, S.C.)
 % - Wolfpack Classic (Raleigh, N.C.)
 \$ - Bulldog Invitational (Starkville, Miss.)



Furman
(7-17, 0-0 SoCon)

F10	vs. Georgetown [!]	W, 3-2
F10	at Jacksonville [!]	L, 3-5
F11	vs. Georgetown [!]	CCD
F11	at North Florida [!]	CCD
F12	at North Florida [!]	CCD
F14	CLEMSON	L, 0-10
F17	SACRED HEART[!]	W, 10-2
F18	BINGHAMTON[^]	L, 5-9
F18	TOWSON[^]	L, 2-4
F19	BELLARMINE[^]	W, 5-1
F21	at Gardner-Webb	L, 10-12 (8 inn.)
F21	at Gardner-Webb	W, 11-4
F24	vs. Tulsa [%]	L, 4-7
F24	at South Alabama [%]	L, 2-3
F25	vs. Mississippi State [%]	L, 5-6
F26	vs. Louisiana Tech [%]	L, 3-7
F26	vs. Mississippi State [%]	L, 0-4
M3	vs. N.C. Central [!]	L, 4-5
M3	vs. Lehigh [!]	L, 1-3
M4	vs. Canisius [!]	L, 3-5
M4	at Campbell [!]	L, 3-7
M5	at Campbell [!]	L, 5-7
M7	at Presbyterian	W, 10-3
M7	at Presbyterian	L, 5-6
M11	CHARLESTON SOUTHERN	W, 6-2
M11	CHARLESTON SOUTHERN	W, 7-0
M15	at No. 18 Georgia	L, 1-7
M22	at South Carolina	3 p.m.
M22	at South Carolina	5:30 p.m.
M25	at Western Carolina*	1 p.m.
M25	at Western Carolina*	3 p.m.
M26	at Western Carolina*	1 p.m.
M29	USC UPSTATE	4 p.m.
M29	USC UPSTATE	6 p.m.
A1	at ETSU*	1 p.m.
A1	at ETSU*	3 p.m.
A2	at ETSU*	1 p.m.
A5	at Clemson	7 p.m.
A7	UNCG*	1 p.m.
A7	UNCG*	3 p.m.
A8	UNCG*	1 p.m.
A12	at College of Charleston	3 p.m.
A12	at College of Charleston	5 p.m.
A15	MERCER*	1 p.m.
A15	MERCER*	3 p.m.
A16	MERCER*	1 p.m.
A19	QUEENS	4 p.m.
A19	QUEENS	6 p.m.
A22	at Samford*	2 p.m.
A22	at Samford*	4 p.m.
A23	at Samford*	2 p.m.
A29	CHATTANOOGA*	1 p.m.
A29	CHATTANOOGA*	3 p.m.
A30	CHATTANOOGA*	1 p.m.
M3	at North Carolina	1 p.m.
M10-13	at SoCon Championship (Chattanooga, Tenn.)	

! - River City Leadoff (Jacksonville, Fla.)
 ^ - Furman Invitational (Greenville, S.C.)
 % - South Alabama Tournament (Mobile, Ala.)
 \$ - Campbell Invitational (Buies Creek, N.C.)



Mercer
(8-18, 0-0 SoCon)

F10	HAMPTON[!]	W, 7-0
F11	FLORIDA A&M[!]	CCD
F12	HAMPTON[!]	L, 0-10
F12	FLORIDA A&M[!]	L, 1-5
F15	at Kennesaw State	L, 0-7
F17	vs. Monmouth [^]	W, 2-0
F17	at Stetson [^]	L, 1-3
F18	vs. Monmouth [^]	W, 10-4
F18	at Stetson [^]	L, 0-8
F19	vs. Fairfield [^]	W, 5-3
F22	TROY	L, 3-8
F24	SOUTH CAROLINA[%]	L, 1-11
F25	BELMONT[%]	L, 1-5
F25	JACKSONVILLE[%]	L, 1-13
F28	NORTHERN IOWA	L, 2-12
M3	vs. Longwood [!]	L, 2-8
M3	vs. Robert Morris [!]	L, 3-6
M4	vs. Longwood [!]	W, 2-0
M4	vs. Robert Morris [!]	W, 14-2
M5	at No. 9 Alabama [!]	L, 0-8
M8	at No. 4 Clemson	L, 0-18
M10	vs. Rutgers [@]	L, 3-6
M10	at No. 8 Florida [@]	L, 3-14
M11	at No. 8 Florida [@]	L, 0-8
M11	vs. Rutgers [@]	W, 3-2
M12	vs. No. 24 Louisiana	L, 2-3
M15	ALABAMA STATE	W, 10-2
M22	vs. Georgia State	3 p.m.
M22	vs. Georgia State	5 p.m.
M25	at Samford*	1 p.m.
M25	at Samford*	3 p.m.
M26	at Samford*	1 p.m.
M29	at Florida A&M	4 p.m.
A1	CHATTANOOGA*	2 p.m.
A1	CHATTANOOGA*	4 p.m.
A2	CHATTANOOGA*	1 p.m.
A4	GEORGIA TECH	6 p.m.
A6	at Tennessee	TBA
A7	vs. Baylor	TBA
A15	at Furman*	1 p.m.
A15	at Furman*	3 p.m.
A16	at Furman*	1 p.m.
A19	at Georgia Southern	4 p.m.
A19	at Georgia Southern	6 p.m.
A22	WESTERN CAROLINA*	2 p.m.
A22	WESTERN CAROLINA*	4 p.m.
A23	WESTERN CAROLINA*	1 p.m.
A26	at Georgia	5 p.m.
A29	UNCG*	2 p.m.
A29	UNCG*	4 p.m.
A30	UNCG*	1 p.m.
M6	at ETSU*	1 p.m.
M7	at ETSU*	3 p.m.
M7	at ETSU*	1 p.m.
M10-13	at SoCon Championship (Chattanooga, Tenn.)	

! - Heart of Georgia Classic (Macon, Ga.)
 ^ - Hatter Classic (DeLand, Fla.)
 % - Mercer Invitational (Macon, Ga.)
 \$ - Easton Crimson Classic (Tuscaloosa, Ala.)
 @ - Florida Tournament (Gainesville, Fla.)



UNCG
(14-12, 0-0 SoCon)

F10	vs. LIU [!]	W, 6-2
F10	vs. Binghamton [!]	W, 8-0
F11	at Florida Gulf Coast [!]	L, 3-4
F11	vs. Southern Illinois [!]	L, 6-9
F12	vs. Binghamton [!]	W, 10-1
F16	VIRGINIA	L, 2-6
F18	MOREHEAD STATE[^]	W, 8-0
F18	UNCW[^]	W, 4-3
F19	MOREHEAD STATE[^]	W, 7-2
F19	UNCW[^]	W, 9-1
F22	CAMPBELL	L, 1-3
F24	DELAWARE[%]	W, 4-3
F24	UCONN[%]	L, 1-3
F25	INDIANA[%]	W, 6-5
F25	UCONN[%]	L, 0-2
F26	INDIANA[%]	L, 2-17
M4	ELON	W, 3-2
M4	ELON	W, 10-5
M5	at Elon	W, 3-1
M8	at Charleston Southern	L, 0-3
M8	at Charleston Southern	W, 12-0
M10	vs. Jacksonville [§]	W, 3-0
M10	at No. 4 Clemson [§]	L, 0-3
M11	vs. Bryant [§]	L, 6-7
M11	at No. 4 Clemson [§]	L, 1-6
M15	NOTRE DAME	L, 3-12
M17	ARMY[@]	4 p.m.
M18	GARDNER-WEBB[@]	1:30 p.m.
M18	ARMY[@]	4 p.m.
M19	GARDNER-WEBB[@]	1:30 p.m.
M23	TOWSON	4 p.m.
M25	ETSU[*]	1 p.m.
M25	ETSU[*]	3 p.m.
M26	ETSU[*]	1 p.m.
M29	at Charlotte	5 p.m.
A4	NORTH CAROLINA	5 p.m.
A7	at Furman [*]	1 p.m.
A7	at Furman [*]	3 p.m.
A8	at Furman [*]	1 p.m.
A12	at Radford	3 p.m.
A12	at Radford	5 p.m.
A15	SAMFORD[*]	1 p.m.
A15	SAMFORD[*]	3 p.m.
A16	SAMFORD[*]	1 p.m.
A19	at Duke	5 p.m.
A22	at Chattanooga [*]	1 p.m.
A22	at Chattanooga [*]	3 p.m.
A23	at Chattanooga [*]	1 p.m.
A29	at Mercer [*]	1 p.m.
A29	at Mercer [*]	3 p.m.
A30	at Mercer [*]	1 p.m.
M2	CHARLOTTE	6 p.m.
M6	WESTERN CAROLINA[*]	1 p.m.
M6	WESTERN CAROLINA[*]	3 p.m.
M7	WESTERN CAROLINA[*]	1 p.m.
M10-13	at SoCon Championship (Chattanooga, Tenn.)	

! - FGCU Kickoff Classic (Fort Myers, Fla.)
 ^ - Spiro Classic (Greensboro, N.C.)
 % - UNCG Invitational (Greensboro, N.C.)
 § - Clemson Classic (Clemson, S.C.)
 @ - Spartan Classic (Greensboro, N.C.)



Samford
(9-16, 0-0 SoCon)

F10	vs. Seton Hall [!]	W, 1-0
F11	vs. Seton Hall [!]	CCD
F12	at Southern Miss [!]	L, 0-3
F12	at Southern Miss [!]	L, 2-3
F17	BALL STATE[@]	L, 3-5
F17	BALL STATE[@]	W, 8-7 (9 inn.)
F18	BELMONT[@]	L, 3-4(10 inn.)
F18	LINDENWOOD[@]	L, 0-1
F19	at UAB [@]	L, 2-3
F22	at Alabama	L, 2-3
F24	SOUTHERN INDIANA[^]	L, 0-1
F24	IUPUI[^]	W, 7-2
F25	NORTH ALABAMA[^]	L, 1-2
F25	IUPUI[^]	W, 3-1
F26	SOUTHERN INDIANA[^]	W, 5-2
F28	at Kennesaw State	L, 0-1
M3	vs. Ball State [%]	L, 0-3
M3	vs. Stetson [%]	W, 10-2
M4	vs. Stetson [%]	L, 0-1
M4	at No. 18 Georgia [%]	L, 0-9
M5	at No. 18 Georgia [%]	L, 3-11
M10	vs. Western Michigan [§]	W, 4-2
M11	vs. Western Michigan [§]	L, 1-10
M11	at Jacksonville State [§]	W, 7-1
M12	vs. Western Michigan [§]	CCD
M12	at Jacksonville State [§]	CCD
M14	ALABAMA STATE	W, 11-5
M16	vs. Purdue ⁺	L, 0-3
M17	vs. St. Thomas ⁺	10:30 a.m.
M17	at Ole Miss ⁺	3:30 p.m.
M18	vs. St. Thomas ⁺	1 p.m.
M18	at Ole Miss ⁺	6 p.m.
M22	at North Alabama	TBA
M25	MERCER[*]	2 p.m.
M25	MERCER[*]	4 p.m.
M26	MERCER[*]	2 p.m.
M29	AUBURN	6 p.m.
A1	at Western Carolina [*]	1 p.m.
A1	at Western Carolina [*]	3 p.m.
A2	at Western Carolina [*]	1 p.m.
A7	ETSU[*]	2 p.m.
A7	ETSU[*]	4 p.m.
A8	ETSU[*]	2 p.m.
A11	ALABAMA	6 p.m.
A15	at UNCG [*]	1 p.m.
A15	at UNCG [*]	3 p.m.
A16	at UNCG [*]	1 p.m.
A19	UAB	6 p.m.
A22	FURMAN[*]	2 p.m.
A22	FURMAN[*]	4 p.m.
A23	FURMAN[*]	2 p.m.
A26	KENNESAW STATE	5 p.m.
M2	JACKSONVILLE STATE	TBA
M6	at Chattanooga [*]	1 p.m.
M6	at Chattanooga [*]	3 p.m.
M7	at Chattanooga [*]	1 p.m.
M10-13	at SoCon Championship (Chattanooga, Tenn.)	

! - USM Tournament (Hattiesburg, Miss.)
 @ - UAB Classic (Birmingham, Ala.)
 ^ - Bulldog Classic (Birmingham, Ala.)
 % - UGA Tournament (Athens, Ga.)
 § - JSU Invitational (Jacksonville, Ala.)
 + - Ole Miss Tournament (Oxford, Miss.)



Chattanooga
(14-8, 0-0 SoCon)

F10	vs. James Madison [!]	W, 4-3
F12	at College of Charleston [!]	CCD
F17	MARSHALL[^]	CCD
F17	INDIANA STATE[^]	CCD
F18	MARSHALL[^]	W, 7-4
F18	WESTERN ILLINOIS[^]	W, 5-4
F19	MAINE[^]	L, 4-5
F19	WESTERN ILLINOIS[^]	L, 2-4
F22	TENNESSEE STATE	W, 3-2 (9 inn.)
F24	S.E. MISSOURI STATE[%]	CCD
F24	WESTERN MICHIGAN[%]	CCD
F24	MEMPHIS[%]	CCD
F25	EASTERN ILLINOIS[%]	W, 11-9
F25	UNLV[%]	L, 3-5
F26	AKRON[%]	L, 1-2
M3	vs. Harvard [§]	W, 7-3
M4	at Gardner-Webb [§]	W, 3-2
M4	vs. Sacred Heart [§]	W, 6-4
M5	vs. Harvard [§]	L, 2-5
M5	vs. Detroit [§]	W, 5-0
M10	vs. South Alabama [@]	L, 0-1
M10	vs. Iowa [@]	L, 0-6
M11	vs. Hartford [@]	W, 13-2
M11	vs. Bucknell [@]	W, 4-2
M12	vs. Lafayette [@]	W, 2-1
M15	vs. Princeton [@]	W, 7-6
M15	vs. Lehigh [@]	W, 3-1
M16	at Florida Gulf Coast	L, 4-5
M17	at Florida Gulf Coast	1 p.m.
M17	at Florida Gulf Coast	3 p.m.
M24	at Virginia Tech	1 p.m.
M25	at Virginia Tech	Noon
M25	at Virginia Tech	2 p.m.
M29	LIPSCOMB	6 p.m.
A1	at Mercer [*]	1 p.m.
A1	at Mercer [*]	3 p.m.
A2	at Mercer [*]	1 p.m.
A5	at Georgia State	3 p.m.
A7	WESTERN CAROLINA[*]	3 p.m.
A7	WESTERN CAROLINA[*]	5 p.m.
A8	WESTERN CAROLINA[*]	Noon
A15	ETSU [*]	1 p.m.
A15	ETSU [*]	3 p.m.
A16	ETSU [*]	1 p.m.
A19	at Austin Peay	5 p.m.
A22	UNCG[*]	1 p.m.
A22	UNCG[*]	3 p.m.
A23	UNCG[*]	2 p.m.
A29	at Furman [*]	1 p.m.
A29	at Furman [*]	3 p.m.
A30	at Furman [*]	1 p.m.
M6	SAMFORD[*]	1 p.m.
M6	SAMFORD[*]	3 p.m.
M7	SAMFORD[*]	2 p.m.
M10-13	at SoCon Championship (Chattanooga, Tenn.)	

! - Charleston Invitational (Charleston, S.C.)
 ^ - Chattanooga Challenge (Chattanooga, Tenn.)
 % - Frost Challenge (Chattanooga, Tenn.)
 § - Gardner-Webb Tournament (Boiling Springs, N.C.)
 @ - Madeira Beach Invitational (Madeira Beach, Fla.)



Western Carolina
(7-12, 0-0 SoCon)

F10	vs. Tennessee Tech [!]	W, 1-0 (8 inn.)
F10	at Alabama State [!]	W, 1-0
F11	vs. UT Martin [!]	CCD
F11	at Alabama State [!]	CCD
F12	vs. UT Martin [!]	CCD
F22	at Presbyterian	L, 2-5
F22	at Presbyterian	L, 5-6
F24	vs. Northern Iowa [^]	L, 0-9
F24	vs. Tennessee State [^]	L, 0-3
F25	vs. Tennessee State [^]	W, 7-5
F25	at Georgia State [^]	L, 4-5
F26	vs. Northern Iowa [^]	L, 1-7
M1	at USC Upstate	L, 2-6
M1	at USC Upstate	L, 1-5
M7	at UC San Diego	W, 1-0
M8	at UC Riverside	W, 5-2
M8	at UC Riverside	L, 2-6
M10	vs. Yale [%]	W, 8-4
M10	vs. Michigan State [%]	CCD
M11	at San Diego [%]	CCD
M12	vs. Yale [%]	W, 2-1
M12	at San Diego [%]	L, 1-8
M15	at Georgia State	L, 3-6
M15	at Georgia State	L, 0-1
M21	at Gardner-Webb	3 p.m.
M21	at Gardner-Webb	5 p.m.
M25	FURMAN*	1 p.m.
M25	FURMAN*	3 p.m.
M26	FURMAN*	1 p.m.
M29	RADFORD	3 p.m.
M29	RADFORD	5 p.m.
A1	SAMFORD*	1 p.m.
A1	SAMFORD*	3 p.m.
A2	SAMFORD*	1 p.m.
A7	at Chattanooga [*]	1 p.m.
A7	at Chattanooga [*]	3 p.m.
A8	at Chattanooga [*]	1 p.m.
A18	APP STATE	4 p.m.
A22	at Mercer [*]	1 p.m.
A22	at Mercer [*]	3 p.m.
A23	at Mercer [*]	1 p.m.
A26	N.C. CENTRAL	3 p.m.
A26	N.C. CENTRAL	5 p.m.
A29	ETSU*	1 p.m.
A29	ETSU*	3 p.m.
A30	ETSU*	1 p.m.
M6	at UNCG [*]	1 p.m.
M6	at UNCG [*]	3 p.m.
M7	at UNCG [*]	1 p.m.
M10-13	at SoCon Championship (Chattanooga, Tenn.)	

! - Stinger Classic (Montgomery, Ala.)
 ^ - Panther Invitational at GSU (Atlanta, Ga.)
 % - San Diego Classic (San Diego, Calif.)

The Automated ScoreBook
SoCon Batting Leaders (as of Mar 17, 2023)
(All games)

Hitting minimums - 1 Games 50% of Games 2.0 AB/Game 2.5 TPA/Game
Pitching minimums - 1 Games 1.0 IP/Game

Batting avg		Slugging pct		On base pct	
1. Chattanooga	.284	1. UNCG	.432	1. UNCG	.359
2. ETSU	.252	2. Chattanooga	.421	2. Chattanooga	.345
3. Furman	.252	3. Furman	.380	3. Samford	.325
4. Samford	.249	4. Samford	.363	4. Furman	.325
5. UNCG	.242	5. ETSU	.338	5. ETSU	.321
6. Western Carolina	.227	6. Mercer	.316	6. Mercer	.315
7. Mercer	.226	7. Western Carolina	.304	7. Western Carolina	.287
Runs scored		Hits		Runs batted in	
1. UNCG	118	1. Furman	170	1. UNCG	115
2. Furman	108	2. Chattanooga	168	2. Furman	100
3. Chattanooga	96	3. Samford	162	3. Chattanooga	81
4. Mercer	76	ETSU	162	4. Mercer	69
5. Samford	73	5. UNCG	154	5. Samford	66
6. ETSU	68	6. Mercer	133	6. ETSU	59
7. Western Carolina	46	7. Western Carolina	113	7. Western Carolina	34
Doubles		Triples		Home runs	
1. UNCG	34	1. Furman	5	1. UNCG	27
2. Chattanooga	33	2. Chattanooga	3	2. Furman	17
3. Samford	28	UNCG	3	3. Chattanooga	14
4. Furman	25	4. Samford	2	Samford	14
5. ETSU	20	Western Carolina	2	5. Mercer	13
6. Western Carolina	13	6. ETSU	1	6. ETSU	11
7. Mercer	12	Mercer	1	7. Western Carolina	7
Total bases		Total plate appearances		At bats	
1. UNCG	275	1. UNCG	763	1. Furman	674
2. Furman	256	Furman	763	2. Samford	651
3. Chattanooga	249	3. Samford	739	3. ETSU	642
4. Samford	236	4. ETSU	717	4. UNCG	636
5. ETSU	217	5. Mercer	696	5. Chattanooga	591
6. Mercer	186	6. Chattanooga	683	6. Mercer	589
7. Western Carolina	151	7. Western Carolina	550	7. Western Carolina	497
Walks		Hit by pitch		Strikeouts	
1. UNCG	101	1. Mercer	20	1. Samford	159
2. Samford	67	2. Furman	19	2. Mercer	153
3. Mercer	59	3. UNCG	16	3. UNCG	136
4. Furman	56	4. ETSU	13	4. Chattanooga	129
5. ETSU	54	5. Western Carolina	8	5. Western Carolina	113
6. Chattanooga	52	6. Chattanooga	7	6. Furman	110
7. Western Carolina	34	Samford	7	ETSU	110
Sac bunts		Sac flies		Stolen bases	
1. Chattanooga	25	1. Chattanooga	8	1. Furman	34
2. Mercer	22	2. Mercer	6	2. Chattanooga	23
3. Samford	13	Furman	6	3. Mercer	21
4. Western Carolina	9	4. ETSU	5	4. ETSU	20
5. Furman	8	5. UNCG	2	5. Samford	19
6. UNCG	7	Western Carolina	2	6. Western Carolina	18
7. ETSU	3	7. Samford	1	7. UNCG	3
Caught stealing		Steal attempts		Grounded into DP	
1. Furman	7	1. Furman	41	1. ETSU	11
Western Carolina	7	2. Chattanooga	30	2. Samford	8
Chattanooga	7	3. Mercer	27	3. UNCG	4
4. Mercer	6	4. Western Carolina	25	4. Western Carolina	3
5. UNCG	2	5. ETSU	22	Furman	3
Samford	2	6. Samford	21		
ETSU	2	7. UNCG	5		

The Automated ScoreBook
SoCon Pitching Leaders (as of Mar 17, 2023)
(All games)

Hitting minimums - 1 Games 50% of Games 2.0 AB/Game 2.5 TPA/Game
Pitching minimums - 1 Games 1.0 IP/Game

Earned run avg		Opposing bat avg		Innings pitched	
1. Samford	2.55	1. Chattanooga	.221	1. Samford	170.0
2. Chattanooga	2.68	2. Samford	.262	2. UNCG	168.0
3. UNCG	3.46	3. UNCG	.272	3. Furman	162.2
4. Western Carolina	3.91	4. Furman	.273	4. Chattanooga	156.2
5. Furman	4.00	5. Western Carolina	.283	5. ETSU	156.1
6. ETSU	4.43	6. ETSU	.292	6. Mercer	154.2
7. Mercer	6.79	7. Mercer	.310	7. Western Carolina	125.1
Batters struck out		Batters SO out looking		Wins	
1. Chattanooga	149	1. ETSU	38	1. Chattanooga	14
2. Samford	146	2. Samford	36	UNCG	14
3. UNCG	109	3. Mercer	32	3. Samford	9
4. ETSU	107	4. Chattanooga	30	4. Western Carolina	7
5. Western Carolina	99	5. UNCG	27	Furman	7
6. Mercer	93	6. Furman	19	Mercer	7
7. Furman	85	7. Western Carolina	18	7. ETSU	5
Losses		Saves		Runners picked off	
1. ETSU	18	1. Chattanooga	2	1. ETSU	1
2. Furman	17	UNCG	2	Samford	1
Mercer	17	Mercer	2	Western Carolina	1
4. Samford	16	4. Western Carolina	1		
5. UNCG	12	Samford	1		
Western Carolina	12				
7. Chattanooga	8				
Sac bunts allowed		Sac flies allowed		Hits allowed	
1. Samford	22	1. Chattanooga	10	1. Chattanooga	125
2. Chattanooga	18	2. UNCG	9	2. Western Carolina	143
3. Mercer	12	3. ETSU	7	3. Samford	171
4. Furman	11	4. Mercer	6	4. UNCG	182
UNCG	11	5. Furman	5	5. ETSU	184
6. Western Carolina	8	Samford	5	6. Furman	185
7. ETSU	6	7. Western Carolina	4	7. Mercer	208
Runs allowed		Earned runs allowed		Walks allowed	
1. Chattanooga	76	1. Chattanooga	60	1. Western Carolina	37
2. Western Carolina	79	2. Samford	62	2. Samford	44
3. Samford	85	3. Western Carolina	70	3. UNCG	52
4. UNCG	100	4. UNCG	83	4. Furman	71
5. Furman	121	5. Furman	93	5. Chattanooga	76
6. ETSU	129	6. ETSU	99	6. Mercer	84
7. Mercer	166	7. Mercer	150	7. ETSU	89
Doubles allowed		Triples allowed		Home runs allowed	
1. Chattanooga	19	1. UNCG	1	1. Chattanooga	9
2. Furman	21	Western Carolina	1	2. Western Carolina	10
3. Western Carolina	28	3. Mercer	2	3. Furman	12
4. Samford	31	4. Samford	3	4. UNCG	13
5. ETSU	34	5. ETSU	4	5. Samford	14
6. UNCG	39	6. Chattanooga	6	6. ETSU	20
7. Mercer	41	7. Furman	7	7. Mercer	27
Wild pitches		Balks		Hit batters	
1. Chattanooga	18			1. ETSU	26
2. Samford	17			2. Chattanooga	19
Mercer	17			3. Mercer	17
4. Furman	13			4. UNCG	16
5. ETSU	10			5. Furman	12
6. UNCG	8			6. Samford	6
7. Western Carolina	7			7. Western Carolina	5

Intentional BB allowed

The Automated ScoreBook
SoCon Fielding Leaders (as of Mar 17, 2023)
(All games)

Hitting minimums - 1 Games 50% of Games
Pitching minimums - 1 Games 1.0 IP/Game

Fielding pct		Chances		Putouts	
1. Western Carolina	.971	1. Furman	760	1. Samford	510
2. Chattanooga	.968	2. UNCG	732	2. UNCG	504
3. ETSU	.959	3. Samford	722	3. Furman	488
4. Samford	.957	4. Chattanooga	659	4. Chattanooga	470
5. UNCG	.956	5. Mercer	643	5. ETSU	469
6. Furman	.953	6. ETSU	633	6. Mercer	464
7. Mercer	.936	7. Western Carolina	520	7. Western Carolina	376
Assists		Errors		Fielding double plays	
1. Furman	236	1. Mercer	41	1. UNCG	12
2. UNCG	196	2. Furman	36	2. Furman	6
3. Samford	181	3. UNCG	32	Western Carolina	6
4. Chattanooga	168	4. Samford	31	Chattanooga	6
5. Mercer	138	5. ETSU	26	Mercer	6
ETSU	138	6. Chattanooga	21	6. Samford	5
7. Western Carolina	129	7. Western Carolina	15	7. ETSU	4
Stolen bases against		Caught stealing by		Steal attempts against	
1. Mercer	48	1. Samford	13	1. Mercer	51
2. Furman	47	2. ETSU	9	2. Furman	49
3. ETSU	34	3. UNCG	8	3. ETSU	43
4. UNCG	32	4. Western Carolina	6	4. UNCG	40
5. Western Carolina	29	5. Chattanooga	4	Samford	40
6. Samford	27	6. Mercer	3	6. Western Carolina	35
7. Chattanooga	26	7. Furman	2	7. Chattanooga	30
Passed balls		Catchers interference			
1. ETSU	14	1. Chattanooga	1		
2. Mercer	6				
3. Chattanooga	5				
4. UNCG	4				
Samford	4				
6. Western Carolina	1				

The Automated ScoreBook
SoCon Batting Leaders (as of Mar 17, 2023)
(All games)

Hitting minimums - 1 Games 50% of Games 2.0 AB/Game 2.5 TPA/Game
Pitching minimums - 1 Games 1.0 IP/Game

Batting avg		Slugging pct		On base pct	
1. Riley Ludlam-FUR	.410	1. Riley Ludlam-FUR	.738	1. Delaney Cumbie-UNCG	.505
2. Rebeca Laudino-MER	.395	2. Kaili Phillips-UTC	.700	2. Kaili Phillips-UTC	.476
3. Brooklynn Brewington-WCU	.379	3. Adison Keylon-UTC	.625	3. Riley Ludlam-FUR	.457
4. Jorde Chartrand-UNCG	.361	4. Logan Champion-SAM	.618	4. Sara Muir-ETSU	.447
5. Kaili Phillips-UTC	.360	5. Maycin Brown-UNCG	.605	5. Rebeca Laudino-MER	.446
6. Riley Nayadley-ETSU	.329	6. Kiley Perry-FUR	.600	6. Hana Hashioka-FUR	.439
7. Cameron Young-ETSU	.329	7. Sara Muir-ETSU	.567	7. Jessie Shipley-UNCG	.416
8. Logan Champion-SAM	.329	8. Jorde Chartrand-UNCG	.557	8. Olivia Lipari-UTC	.413
Emily Coltharp-UTC	.329	9. Delaney Cumbie-UNCG	.552	9. Brooklynn Brewington-WCU	.406
10. Sara Muir-ETSU	.328	10. Grier Bruce-SAM	.550	10. Jorde Chartrand-UNCG	.400
Runs scored		Hits		Runs batted in	
1. Ashlee Lykins-FUR	20	1. Rebeca Laudino-MER	30	1. Maycin Brown-UNCG	24
Delaney Cumbie-UNCG	20	2. Ashlee Lykins-FUR	29	2. Riley Ludlam-FUR	21
Maycin Brown-UNCG	20	3. Riley Nayadley-ETSU	27	3. Kiley Perry-FUR	18
4. Kaili Phillips-UTC	17	4. Cameron Young-ETSU	26	4. Grier Bruce-SAM	16
Emily Coltharp-UTC	17	5. Kiley Perry-FUR	25	Sylvia Burroughs-FUR	16
6. Kemiah Michel-ETSU	14	Emily Coltharp-UTC	25	6. Acelynn Sellers-UTC	15
Kiley Perry-FUR	14	Logan Champion-SAM	25	Samantha Lagrama-UNCG	15
Rebeca Laudino-MER	14	Brooklynn Brewington-WCU	25	8. 5 tied at.....	13
9. 3 tied at.....	13	Riley Ludlam-FUR	25		
		10. 3 tied at.....	22		
Doubles		Triples		Home runs	
1. Logan Champion-SAM	8	1. Ainsley Yoshizumi-FUR	3	1. Maycin Brown-UNCG	8
Brooklynn Maxwell-UNCG	8	2. Emily Coltharp-UTC	2	2. Kiley Perry-FUR	6
Riley Ludlam-FUR	8	3. 12 tied at.....	1	Tory Hedgecock-MER	6
4. Olivia Lipari-UTC	7			Grier Bruce-SAM	6
5. Emily Coltharp-UTC	6			5. Sara Muir-ETSU	5
Blayke Batten-UNCG	6			Adison Keylon-UTC	5
7. 9 tied at.....	5			7. 6 tied at.....	4
Total bases		Walks		Hit by pitch	
1. Maycin Brown-UNCG	49	1. Delaney Cumbie-UNCG	22	1. Hana Hashioka-FUR	11
2. Kiley Perry-FUR	48	2. Samantha Lagrama-UNCG	17	2. Delaney Cumbie-UNCG	6
3. Logan Champion-SAM	47	3. Brooklynn Maxwell-UNCG	15	3. Sophie Sumner-MER	4
4. Riley Ludlam-FUR	45	4. Ansley Yantis-SAM	14	Kaili Phillips-UTC	4
5. Grier Bruce-SAM	44	5. Sara Muir-ETSU	13	Kasidy Dunn-ETSU	4
6. Riley Nayadley-ETSU	39	Jessie Shipley-UNCG	13	Rebeca Laudino-MER	4
7. Sara Muir-ETSU	38	Tory Hedgecock-MER	13	Maycin Brown-UNCG	4
8. Katie Helm-MER	37	8. Olivia Lipari-UTC	11	8. 6 tied at.....	3
Delaney Cumbie-UNCG	37	9. Riley Kokinda-UTC	10		
10. 2 tied at.....	35	10. 4 tied at.....	9		
Sac bunts		Sac flies		Stolen bases	
1. Bailey Ledvina-MER	7	1. Katie Helm-MER	3	1. Kemiah Michel-ETSU	10
2. Riley Kokinda-UTC	5	2. Blayke Batten-UNCG	2	2. Ashlee Lykins-FUR	8
3. Sarah Squillace-SAM	4	Emily Coltharp-UTC	2	3. Alyssa Woods-MER	7
Zoe Wright-UTC	4	Riley Ludlam-FUR	2	Emily Coltharp-UTC	7
Lillian Wilkerson-MER	4	Sara Muir-ETSU	2	Rebeca Laudino-MER	7
Adison Keylon-UTC	4	Kiley Perry-FUR	2	6. Brooklynn Brewington-WCU	6
Caitlin Goldwait-FUR	4	7. 17 tied at.....	1	7. Caitlin Goldwait-FUR	5
Parris Wiggs-MER	4			Acelynn Sellers-UTC	5
9. 4 tied at.....	3			Hana Hashioka-FUR	5
				10. 3 tied at.....	4

Total plate appearances	
1. Ashlee Lykins-FUR	96
2. Delaney Cumbie-UNCG	95
3. Maycin Brown-UNCG	92
4. Brooklynn Maxwell-UNCG	89
5. Kiley Perry-FUR	88
6. Ainsley Yoshizumi-FUR	87
Grier Bruce-SAM	87
8. 4 tied at.....	85

At bats	
1. Ashlee Lykins-FUR	90
2. Riley Nayadley-ETSU	82
3. Maycin Brown-UNCG	81
4. Grier Bruce-SAM	80
Kiley Perry-FUR	80
6. Cameron Young-ETSU	79
7. Ainsley Yoshizumi-FUR	78
8. Rebeca Laudino-MER	76
Emily Coltharp-UTC	76
Logan Champion-SAM	76

Steal attempts	
1. Kemiah Michel-ETSU	11
2. Brooklynn Brewington-WCU	10
Rebeca Laudino-MER	10
Ashlee Lykins-FUR	10
5. Emily Coltharp-UTC	9
6. Alyssa Woods-MER	8
7. Hana Hashioka-FUR	7
8. Ainsley Yoshizumi-FUR	6
9. 3 tied at.....	5

Strikeouts	
1. Sarah Squillace-SAM	22
2. Alyssa Woods-MER	19
3. Ansley Yantis-SAM	18
Tory Hedgecock-MER	18
5. Adison Keylon-UTC	17
6. Delaney Cumbie-UNCG	16
Sara Bond-SAM	16
Acelynn Sellers-UTC	16
Rebeca Laudino-MER	16
10. 2 tied at.....	15

Caught stealing	
1. Brooklynn Brewington-WCU	4
2. Rebeca Laudino-MER	3
3. McKayla Cothran-SAM	2
Adison Keylon-UTC	2
Ainsley Yoshizumi-FUR	2
Emily Coltharp-UTC	2
Hana Hashioka-FUR	2
Ashlee Lykins-FUR	2
9. 14 tied at.....	1

Grounded into DP	
1. Merritt Cahoon-SAM	3
2. Kiley Perry-FUR	2
MaKayla Strickland-ETSU	2
Brooklynn Maxwell-UNCG	2
5. 20 tied at.....	1

The Automated ScoreBook
SoCon Pitching Leaders (as of Mar 17, 2023)
(All games)

Hitting minimums - 1 Games 50% of Games 2.0 AB/Game 2.5 TPA/Game
Pitching minimums - 1 Games 1.0 IP/Game

Earned run avg		Opposing bat avg		Innings pitched	
1. McKenzie Newcomb-SAM	1.53	1. Brooke Parrott-UTC	.203	1. McKenzie Newcomb-SAM	77.2
2. Peja Goold-UTC	1.67	2. Alyssa Lavdis-UTC	.206	2. Grace Taylor-MER	67.2
3. Taylor Long-UTC	1.72	3. Taylor Long-UTC	.211	3. Sierra Tufts-FUR	61.0
4. Sara Muir-ETSU	2.08	4. Brianna Bailey-ETSU	.226	4. Brianna Bailey-ETSU	60.2
5. Lainey Baker-SAM	2.23	5. Peja Goold-UTC	.226	5. Emme Buzhardt-FUR	56.2
6. Sara Bond-SAM	2.39	6. Sierra Tufts-FUR	.228	6. Katie Rearley-MER	56.1
7. Salem Ward-UNCG	2.55	7. Emme Buzhardt-FUR	.231	7. Tessa Juett-WCU	47.2
8. Brianna Bailey-ETSU	2.65	8. Sara Bond-SAM	.237	8. Maddie Spell-UNCG	47.0
9. Emme Buzhardt-FUR	2.72	9. Jorde Chartrand-UNCG	.239	9. Jorde Chartrand-UNCG	46.1
10. Alyssa Lavdis-UTC	2.85	10. Salem Ward-UNCG	.243	10. Brooke Parrott-UTC	38.2
Batters struck out		Batters SO out looking		Wins	
1. McKenzie Newcomb-SAM	85	1. McKenzie Newcomb-SAM	22	1. Taylor Long-UTC	5
2. Brianna Bailey-ETSU	52	2. Brianna Bailey-ETSU	18	2. Rhyann Jones-UNCG	5
3. Katie Rearley-MER	44	3. Grace Taylor-MER	16	3. Brianna Bailey-ETSU	4
4. Jorde Chartrand-UNCG	43	4. Katie Rearley-MER	14	4. Sierra Tufts-FUR	4
5. Peja Goold-UTC	42	5. Sierra Tufts-FUR	12	5. 10 tied at.....	3
6. Taylor Long-UTC	41	6. Taylor Long-UTC	10		
7. Tessa Juett-WCU	41	7. Peja Goold-UTC	9		
8. Sierra Tufts-FUR	38	8. Tessa Juett-WCU	9		
9. Grace Taylor-MER	33	9. 4 tied at.....	8		
10. Alyssa Lavdis-UTC	32				
Saves		Appearances		Games started	
1. Jorde Chartrand-UNCG	2	1. Grace Taylor-MER	22	1. Grace Taylor-MER	13
2. Katie Rearley-MER	1	2. Katie Rearley-MER	18	2. Sierra Tufts-FUR	10
3. Peja Goold-UTC	1	3. Brianna Bailey-ETSU	15	3. Brianna Bailey-ETSU	10
4. Makenzie Martin-WCU	1	4. McKenzie Newcomb-SAM	15	4. Katie Rearley-MER	10
5. Brooke Parrott-UTC	1	5. Sierra Tufts-FUR	14	5. Lauralee Scott-FUR	9
6. Chloe Poss-SAM	1	6. Jorde Chartrand-UNCG	14	6. Maddie Spell-UNCG	8
7. Grace Taylor-MER	1	7. Emme Buzhardt-FUR	13	7. Rhyann Jones-UNCG	8
		8. Lainey Baker-SAM	12	8. 4 tied at.....	7
		9. Maddie Spell-UNCG	12		
		10. Jordyn Partain-SAM	12		
Games finished		Games in relief		Sac bunts allowed	
1. Emme Buzhardt-FUR	9	1. Grace Taylor-MER	9	1. Jordyn Partain-SAM	8
2. Grace Taylor-MER	9	2. Emme Buzhardt-FUR	9	2. McKenzie Newcomb-SAM	8
3. McKenzie Newcomb-SAM	8	3. Madi Wicker-MER	8	3. Sierra Tufts-FUR	7
4. Madi Wicker-MER	6	4. McKenzie Newcomb-SAM	8	4. Grace Taylor-MER	7
5. Salem Ward-UNCG	5	5. Katie Rearley-MER	8	5. Taylor Long-UTC	7
6. Taylor Long-UTC	5	6. Riley Hickok-MER	7	6. Brooke Parrott-UTC	5
7. Brianna Bailey-ETSU	5	7. Jorde Chartrand-UNCG	7	7. Peja Goold-UTC	4
8. Katie Rearley-MER	5	8. Salem Ward-UNCG	7	8. Jorde Chartrand-UNCG	4
9. 8 tied at.....	4	9. Taylor Long-UTC	6	9. Katie Rearley-MER	4
		10. Lainey Baker-SAM	6	10. Rhyann Jones-UNCG	4
Sac flies allowed		Losses		Runners picked off	
1. Brooke Parrott-UTC	5	1. Grace Taylor-MER	9	1. Logan Champion-SAM	1
2. Maddie Spell-UNCG	4	2. Sierra Tufts-FUR	6	2. Mattie Mentel-WCU	1
3. Peja Goold-UTC	3	3. Lauralee Scott-FUR	6	3. Kaylee Higgins-ETSU	1
4. Makayla Cooper-ETSU	3	4. Katie Rearley-MER	5		
5. Grace Taylor-MER	3	5. Brianna Bailey-ETSU	5		
6. 7 tied at.....	2	6. McKenzie Newcomb-SAM	5		
		7. 6 tied at.....	4		

Wild pitches		
1. Jordyn Partain-SAM		9
2. Emme Buzhardt-FUR		8
3. Grace Taylor-MER		7
4. Peja Goold-UTC		5
Madi Wicker-MER		5
Taylor Long-UTC		5
Lauralee Scott-FUR		5
Izzy Alley-UTC		5
9. 3 tied at.....		4

Balks

Hit batters		
1. Whitley Arnott-ETSU		10
2. Taylor Long-UTC		8
3. Salem Ward-UNCG		7
Katie Rearley-MER		7
5. Brianna Bailey-ETSU		6
6. Emme Buzhardt-FUR		5
7. 7 tied at.....		4

Intentional BB allowed

Hits allowed		
1. Alyssa Lavdis-UTC		21
2. Brooke Parrott-UTC		26
3. Jordyn Partain-SAM		27
Sara Bond-SAM		27
Taylor Long-UTC		27
6. Peja Goold-UTC		31
7. Salem Ward-UNCG		33
8. Jayme Eilers-WCU		35
9. Sara Muir-ETSU		36
10. Lainey Baker-SAM		37

Runs allowed		
1. Taylor Long-UTC		12
2. Alyssa Lavdis-UTC		13
3. Peja Goold-UTC		14
4. Lainey Baker-SAM		16
Sara Bond-SAM		16
6. Salem Ward-UNCG		18
Brooke Parrott-UTC		18
Jayme Eilers-WCU		18
9. Taylor Norton-WCU		20
10. Sara Muir-ETSU		22

Earned runs allowed

Walks allowed		
1. Taylor Norton-WCU		5
2. Sara Bond-SAM		8
Maddie Spell-UNCG		8
McKenzie Newcomb-SAM		8
5. Salem Ward-UNCG		9
6. Lainey Baker-SAM		10
7. Jayme Eilers-WCU		11
8. Alyssa Lavdis-UTC		12
9. Rhyann Jones-UNCG		13
10. Sara Muir-ETSU		14

Doubles allowed		
1. Sara Bond-SAM		1
2. Taylor Long-UTC		3
3. Alyssa Lavdis-UTC		4
Taylor Norton-WCU		4
5. Maddie Spell-UNCG		5
Emme Buzhardt-FUR		5
Jordyn Partain-SAM		5
Brooke Parrott-UTC		5
9. Peja Goold-UTC		6
10. Sierra Tufts-FUR		7

Triples allowed

Home runs allowed		
1. Taylor Long-UTC		0
Sara Muir-ETSU		0
Salem Ward-UNCG		0
4. Lainey Baker-SAM		1
Jordyn Partain-SAM		1
Taylor Norton-WCU		1
Peja Goold-UTC		1
Alyssa Lavdis-UTC		1
9. Tessa Juett-WCU		2
Rhyann Jones-UNCG		2

1. Rhyann Jones-UNCG		0
Tessa Juett-WCU		0
McKenzie Newcomb-SAM		0
Katie Rearley-MER		0
Jayme Eilers-WCU		0
Alyssa Lavdis-UTC		0
Salem Ward-UNCG		0
Jorde Chartrand-UNCG		0
Sara Muir-ETSU		0
Sierra Tufts-FUR		0

The Automated ScoreBook
SoCon Fielding Leaders (as of Mar 17, 2023)
(All games)

Hitting minimums - 1 Games 50% of Games
Pitching minimums - 1 Games 1.0 IP/Game

Fielding pct		Chances		Putouts	
1. Riley Ludlam-FUR	1.000	1. Kiley Perry-FUR	224	1. Kiley Perry-FUR	215
Olivia Lipari-UTC	1.000	2. Logan Champion-SAM	172	2. Merritt Cahoon-SAM	164
Kendal Pitts-ETSU	1.000	3. Merritt Cahoon-SAM	170	3. Logan Champion-SAM	150
Brooklynn Brewington-WCU	1.000	4. Acelynn Sellers-UTC	143	4. Acelynn Sellers-UTC	136
Bethany Dobias-WCU	1.000	5. Tory Hedgecock-MER	137	5. Jayce Purdy-UTC	122
Parris Wiggs-MER	1.000	6. Jayce Purdy-UTC	135	6. Delaney Cumbie-UNCG	118
Adison Keylon-UTC	1.000	7. Delaney Cumbie-UNCG	129	7. Tory Hedgecock-MER	116
MaKayla Strickland-ETSU	1.000	8. Bailey Ledvina-MER	120	8. Samantha Lagrama-UNCG	107
McKayla Cothran-SAM	1.000	9. Samantha Lagrama-UNCG	114	9. Samantha Reelee-WCU	88
Jaden Cheek-UNCG	1.000	10. Brooklynn Maxwell-UNCG	101	Myra Twitty-WCU	88
Assists		Fielding double plays		Passed balls	
1. Kaili Phillips-UTC	60	1. Maycin Brown-UNCG	9	1. Kaylee Higgins-ETSU	10
2. Alex Rose Molinar-FUR	59	2. Kiley Perry-FUR	6	2. Logan Champion-SAM	4
3. Chloe Fabio-FUR	57	3. Acelynn Sellers-UTC	5	3. Delaney Cumbie-UNCG	3
4. Hana Hashioka-FUR	53	Merritt Cahoon-SAM	5	Lillian Wilkerson-MER	3
Brooklynn Maxwell-UNCG	53	Anna White-UNCG	5	Jayce Purdy-UTC	3
6. Ansley Yantis-SAM	49	Tory Hedgecock-MER	5	Sophie Sumner-MER	3
7. Sarah Squillace-SAM	46	7. 5 tied at.....	4	7. Presley Williamson-UTC	2
8. Maycin Brown-UNCG	45			Amber Atkins-ETSU	2
Bailey Ledvina-MER	45			9. 4 tied at.....	1
Jessie Shipley-UNCG	45				
Catchers interference		Steal attempts against		Stolen bases against	
1. Presley Williamson-UTC	1	1. Logan Champion-SAM	39	1. Sophie Sumner-MER	34
		2. Sophie Sumner-MER	36	2. Riley Ludlam-FUR	30
		3. Delaney Cumbie-UNCG	33	3. Delaney Cumbie-UNCG	27
		4. Riley Ludlam-FUR	32	4. Logan Champion-SAM	26
		5. Samantha Reelee-WCU	29	5. Samantha Reelee-WCU	25
		6. Grace Taylor-MER	22	6. Grace Taylor-MER	21
		7. Kaylee Higgins-ETSU	21	7. Katie Rearley-MER	17
		8. Katie Rearley-MER	19	Hana Suniga-FUR	17
		Jayce Purdy-UTC	19	Sierra Tufts-FUR	17
		Tessa Juett-WCU	19	10. 2 tied at.....	16
Caught stealing by		Errors			
1. Logan Champion-SAM	13	1. Brooklynn Maxwell-UNCG	9		
2. Delaney Cumbie-UNCG	6	Maycin Brown-UNCG	9		
Kaylee Higgins-ETSU	6	3. Bailey Ledvina-MER	8		
4. Brianna Bailey-ETSU	5	Rebeca Laudino-MER	8		
McKenzie Newcomb-SAM	5	5. Jessie Shipley-UNCG	7		
6. Maddie Spell-UNCG	4	Ansley Yantis-SAM	7		
Samantha Reelee-WCU	4	7. Emma Dorval-MER	6		
Jordyn Partain-SAM	4	Riley Nayadley-ETSU	6		
9. 3 tied at.....	3	Alex Rose Molinar-FUR	6		
		Sarah Squillace-SAM	6		

The Automated ScoreBook
 Game Highs for SoCon (as of Mar 17, 2023)
 (All games)

TEAM GAME HIGHS

Batting

At bats:	44	-	Furman (vs Mississippi State, Feb 25, 2023)
Runs scored:	14	-	Mercer (vs Robert Morris, Mar 04, 2023)
Hits:	17	-	East Tennessee State (vs Penn, Feb 26, 2023)
RBIs:	12	-	UNC Greensboro (vs Charleston Southern, Mar 08, 2023)
Doubles:	6	-	UNCG (vs Binghamton, Feb 12, 2023)
Triples:	2	-	UNCG (vs Long Island, Feb 10, 2023)
Home runs:	4	-	Mercer Softball (vs ALST, Mar 15, 2023)
	4	-	UNC Greensboro (vs Indiana, Feb 25, 2023)
Total bases:	25	-	Samford (vs Alabama State, Mar 14, 2023)
Walks:	10	-	Mercer (vs Robert Morris, Mar 04, 2023)
Strikeouts:	15	-	Western Carolina (vs Northern Iowa, Feb 26, 2023)
Sac hits:	4	-	Chattanooga (vs Harvard, Mar 05, 2023)
	4	-	Mercer (vs Fairfield, Feb 19, 2023)
Sac flies:	2	-	East Tennessee State (vs George Washington, Feb 17, 2023)
	2	-	Chattanooga (vs Detroit Mercy, Mar 05, 2023)
	2	-	Chattanooga (vs Akron, Feb 26, 2023)
Stolen bases:	6	-	Mercer Softball (vs ALST, Mar 15, 2023)
Caught stealing:	2	-	Furman (vs Gardner-Webb, Feb 21, 2023)
Hit by pitch:	3	-	(7 times)
Runners LOB:	14	-	Furman (vs Presbyterian, Mar 07, 2023)
Hit into DP:	3	-	East Tennessee St. (vs Omaha, Mar 10, 2023)

Fielding

Putouts:	34	-	Furman (vs Mississippi State, Feb 25, 2023)
Assists:	16	-	Western Carolina (vs Tennessee State, Feb 25, 2023)
	16	-	Furman (vs NC Central, Mar 03, 2023)
Errors:	6	-	Mercer (vs Hampton, Feb 12, 2023)
Passed balls:	4	-	ETSU (vs MOR, Mar 14, 2023)
DPs turned:	2	-	Western Carolina (vs USC Upstate, Mar 01, 2023)
	2	-	Chattanooga (vs Lehigh, Mar 15, 2023)

Pitching

Innings pitched:	11.1	-	Furman (vs Mississippi State, Feb 25, 2023)
Strikeouts:	15	-	Chattanooga (vs Detroit Mercy, Mar 05, 2023)
Hits allowed:	1	-	Furman (vs Charleston Southern, Mar 11, 2023)
Wild pitches:	4	-	Chattanooga (vs Maine, Feb 19, 2023)
Hit batters:	5	-	ETSU (vs Campbell, Feb 10, 2023)

The Automated ScoreBook
Game Highs for SoCon (as of Mar 17, 2023)
(All games)

GAME HIGHS (BOTH TEAMS)

Batting

At bats:	44	-	Furman vs Mississippi State (Feb 25, 2023)
Runs scored:	14	-	Mercer vs Robert Morris (Mar 04, 2023)
Hits:	17	-	East Tennessee State vs Penn (Feb 26, 2023)
RBIs:	12	-	UNC Greensboro vs Charleston Southern (Mar 08, 2023)
Doubles:	6	-	UNCG vs Binghamton (Feb 12, 2023)
Triples:	2	-	Long Island vs UNCG (Feb 10, 2023)
Home runs:	4	-	ALST vs Mercer Softball (Mar 15, 2023)
	4	-	Indiana vs UNC Greensboro (Feb 25, 2023)
Total bases:	25	-	Alabama State vs Samford (Mar 14, 2023)
Walks:	10	-	Mercer vs Robert Morris (Mar 04, 2023)
Strikeouts:	15	-	Western Carolina vs Northern Iowa (Feb 26, 2023)
Sac hits:	4	-	Harvard vs Chattanooga (Mar 05, 2023)
	4	-	Fairfield vs Mercer (Feb 19, 2023)
Sac flies:	2	-	East Tennessee State vs George Washington (Feb 17, 2023)
	2	-	Detroit Mercy vs Chattanooga (Mar 05, 2023)
	2	-	Akron vs Chattanooga (Feb 26, 2023)
Stolen bases:	6	-	ALST vs Mercer Softball (Mar 15, 2023)
Caught stealing:	2	-	Furman vs Gardner-Webb (Feb 21, 2023)
Hit by pitch:	3	-	(7 times)
Runners LOB:	14	-	Furman vs Presbyterian (Mar 07, 2023)
Hit into DP:	3	-	Omaha vs East Tennessee St. (Mar 10, 2023)

Fielding

Putouts:	34	-	Furman vs Mississippi State (Feb 25, 2023)
Assists:	16	-	Western Carolina vs Tennessee State (Feb 25, 2023)
	16	-	Furman vs NC Central (Mar 03, 2023)
Errors:	6	-	Hampton vs Mercer (Feb 12, 2023)
Passed balls:	4	-	MOR vs ETSU (Mar 14, 2023)
DPs turned:	3	-	Omaha vs East Tennessee St. (Mar 10, 2023)

Pitching

Innings pitched:	11.1	-	Furman vs Mississippi State (Feb 25, 2023)
Strikeouts:	15	-	Detroit Mercy vs Chattanooga (Mar 05, 2023)
Hits allowed:	1	-	Charleston Southern vs Furman (Mar 11, 2023)
Wild pitches:	4	-	Maine vs Chattanooga (Feb 19, 2023)
Hit batters:	5	-	ETSU vs Campbell (Feb 10, 2023)

The Automated ScoreBook
Game Highs for SoCon (as of Mar 17, 2023)
(All games)

INDIVIDUAL GAME HIGHS

Batting

At bats:	6	-	Yoshizumi, Furman (vs Mississippi State, Feb 25, 2023)
Runs scored:	3	-	(10 times)
Hits:	4	-	(7 times)
RBIs:	6	-	G. Loftin, UNCG (vs Binghamton, Feb 12, 2023)
Doubles:	2	-	(7 times)
Triples:	1	-	(17 times)
Home runs:	2	-	(7 times)
Total bases:	11	-	Phillips, Chattanooga (vs Princeton, Mar 15, 2023)
Walks:	3	-	G. Loftin, UNC Greensboro (vs Elon, Mar 04, 2023)
	3	-	Kokinda, Chattanooga (vs Harvard, Mar 05, 2023)
Strikeouts:	3	-	(14 times)
Sac hits:	2	-	(6 times)
Sac flies:	2	-	S. Muir, East Tennessee State (vs George Washington, Feb 17, 2023)
Stolen bases:	2	-	(11 times)
Caught stealing:	1	-	(33 times)
Hit by pitch:	2	-	(5 times)
Runners LOB:	6	-	Perry, Furman (vs Presbyterian, Mar 07, 2023)

Fielding

Putouts:	16	-	Purdy, Chattanooga (vs Detroit Mercy, Mar 05, 2023)
Assists:	9	-	Molinar, Furman (vs NC Central, Mar 03, 2023)
Errors:	3	-	T.Hedgecock, Mercer (vs Hampton, Feb 12, 2023)
Passed balls:	4	-	K. Higgins, ETSU (vs MOR, Mar 14, 2023)

Pitching

Innings pitched:	9.0	-	Goold, Chattanooga (vs Akron, Feb 26, 2023)
Strikeouts:	15	-	Lavdis, Chattanooga (vs Detroit Mercy, Mar 05, 2023)
Wild pitches:	3	-	Partain, Samford (vs Southern Miss, Feb 12, 2023)
Hit batters:	4	-	W. Arnott, ETSU (vs Campbell, Feb 10, 2023)