



SOUTHERN CONFERENCE SOFTBALL



702 North Pine Street, Spartanburg, SC 29303 • 864-591-5100 • Fax: 864-591-3448
Phil Perry, Assistant Commissioner for Media Relations (interim SB contact)
facebook.com/SouthernConference • twitter.com/SoConSports • instagram.com/SouthernConference

2022 SOUTHERN CONFERENCE SOFTBALL STANDINGS

	Conference					Overall					
	W-L	Pct.	H	A	ST	W-L	Pct.	H	A	N	ST
UNCG	0-0	.000	0-0	0-0		9-5	.643	8-1	0-2	1-2	L1
Samford	0-0	.000	0-0	0-0		8-6	.571	3-2	4-2	1-2	L3
Western Carolina	0-0	.000	0-0	0-0		9-8	.529	1-1	4-1	4-6	W1
Chattanooga	0-0	.000	0-0	0-0		7-7	.500	6-4	0-1	1-2	L1
Furman	0-0	.000	0-0	0-0		6-7	.462	6-6	0-1	0-0	W3
ETSU	0-0	.000	0-0	0-0		4-11	.267	0-0	1-7	3-4	L6
Mercer	0-0	.000	0-0	0-0		3-12	.200	0-4	2-4	1-4	L4

UPCOMING SCHEDULE (ALL TIMES EASTERN)

March 4 (Friday)

Furman vs. Jacksonville State, 10 a.m. (Starkville, Miss.)
 Chattanooga vs. North Carolina A&T, 11 a.m. (Auburn, Ala.)
 Samford vs. Saint Louis, 11:30 a.m. (Oxford, Miss.)
 Chattanooga vs. Toledo, 1:30 p.m. (Auburn, Ala.)
 Samford vs. Western Kentucky, 2 p.m. (Oxford, Miss.)
 Furman at Mississippi State, 3 p.m. SEC Network+
 UNCG vs. Connecticut, 3:30 p.m. (Chapel Hill, N.C.)

March 5 (Saturday)

Chattanooga vs. Toledo, 11 a.m. (Auburn, Ala.)
 Samford vs. Saint Louis, 11:30 a.m. (Oxford, Miss.)
 Furman vs. Alcorn State, 12:30 p.m. (Starkville, Miss.)
 Mercer at Charleston Southern, 1 p.m.
 Tennessee Tech at ETSU, 1 p.m.
 Chattanooga vs. North Carolina A&T, 1:30 p.m. (Auburn, Ala.)
 Samford vs. Western Kentucky, 2 p.m. (Oxford, Miss.)
 Tennessee Tech at ETSU, 3 p.m.
 Mercer at Charleston Southern, 3 p.m.
 Furman at Mississippi State, 5:30 p.m. SEC Network+
 UNCG vs. Penn State, 5:30 p.m. (Chapel Hill, N.C.)

March 6 (Sunday)

Furman vs. Jacksonville State, 10 a.m. (Starkville, Miss.)
 Mercer at Charleston Southern, 12 p.m.
 Tennessee Tech at ETSU, 1 p.m.
 Chattanooga at Auburn, 1:30 p.m. SEC Network+
 Samford at Ole Miss, 1:30 p.m. SEC Network+
 UNCG vs. Penn State, 3 p.m. (Chapel Hill, N.C.)
 UNCG at North Carolina, 5:30 p.m. ACC Network Extra

March 8 (Tuesday)

Boston College at UNCG, 4 p.m.
 Furman at Florida State, 6 p.m.
 UAB at Samford, 7 p.m.

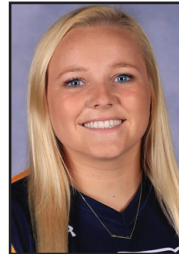
March 9 (Wednesday)

Furman at Florida A&M, 3 p.m.
 Furman at Florida A&M, 5 p.m.
 Mercer at Clemson, 6 p.m.

SoCon PLAYER OF THE WEEK (2/28)

Blayke Batten, Jr., 1B/RF, UNCG

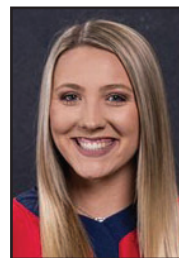
Batten hit .412 and slugged 1.059 with seven RBIs and five runs scored to lead UNCG to a 4-0 weekend at its own UNCG Invitational and a 4-1 week overall. The junior from Kenly, North Carolina, hit safely in four of five games on the week, starting it with a solo home run in a 4-3 loss at NC State on Tuesday. After going hitless against Loyola Chicago on Friday, Batten rebounded with a 3-for-4 showing against Towson on Saturday, hitting a pair of triples on the day as well as driving in a run and scoring a run. Later that day, she was 1-for-3, scoring twice and hitting a three-run home run. She wrapped up her week with another two-hit effort in a 6-4 win over Virginia on Sunday, hitting a single and a two-run double.



SoCon PITCHER OF THE WEEK (2/28)

Jordan Walters, So., Samford

Samford's Walters pitched a complete-game shutout in her only appearance of the week. The sophomore from Tallahassee, Alabama, allowed just two hits and two walks in a 1-0 win over Indiana State on Saturday at Samford's Bulldog Classic. She allowed just two base-runners to reach second on the day and never allowed multiple base-runners in the same inning. Walters retired the side in order in the second, fourth and sixth innings.



NOTES

• Five of the six Southern Conference teams in action this weekend are on the road, while ETSU finally opens its home slate with a three-game set against Tennessee Tech. Western Carolina is idle this weekend.

• UNCG has won eight of its last 10 games and own the best record in the SoCon so far. The Spartans have not shied away from top competition, facing a pair of top-25 opponents and playing six games against teams from Power 5 conferences so far. UNCG is also at the Carolina Classic hosted by North Carolina this weekend and will face Penn State twice and the host Tar Heels once. After that, the Spartans welcome Boston College on Tuesday and Michigan State on Thursday.

• The Spartans took No. 12 Oregon to extra innings on Thursday, ultimately falling 12-4 in 10. Delaney Cumbie, Grace Loftin and Brooklyn Maxwell hit their first home runs of the season in the losing effort.

• Samford's Sarah Squillace leads the league with a .400 batting average through the first 14 games of the season, with 20 hits in 50 at bats. The Bulldogs are at the Ole Miss Invitational this weekend.

• UNCG's Blayke Batten is second in the SoCon with a .382 average and paces the league in home runs (five), triples (two), total bases (34) and slugging percentage (1.000).

• Chattanooga's Brooke Parrott is 5-1 with two saves and a 0.70 ERA. She has also thrown a perfect game this season, blanking Radford 4-0 on Feb. 19.

• After dropping six of seven, Furman righted the ship by winning three straight games at its home tournament last weekend, run-ruling George Mason twice and topping Iona, 6-2.

• The Paladins hit the road this weekend for their first road tournament after playing all but one game at home so far this season. Furman is at Mississippi State's Bulldog Invitational this weekend and visits No. 3 Florida State on Tuesday.

• Chattanooga is playing in the Jane B. Moore Memorial at Auburn this weekend and will face the 20th-ranked hosts on Sunday. The Mocs will also play North Carolina A&T and Toledo twice each over the course of the tournament.

• ETSU's first home series is coming at an ideal time, as the Bucs have dropped six straight since opening 4-5.

• Mercer opened its home slate with the Mercer Invitational last weekend, dropping a pair of contests each to Murray State and Middle Tennessee. The Bears will try to get back in the win column this weekend when they visit Charleston Southern for a three-game set before heading to No. 9 Clemson on Wednesday.

• Western Carolina is back in action at Marshall's Thundering Herd Invite on March 11-13.

ACTIVE SoCON CAREER LEADERS

BATTING AVERAGE [Minimum 250 AB]

.344 - Emily Coltharp (123-350); Chattanooga, 2019-pr.

ON-BASE PCT [Minimum 250 AB]

.488 - Delaney Cumbie; UNCG, 2019-pr.

SLUGGING PCT [Minimum 250 AB]

.561 - Bailey Huneycutt; Western Carolina, 2019-pr.

AT BATS

625 - Makenna Matthijs; UNCG, 2018-pr.

RUNS SCORED

144 - Makenna Matthijs; UNCG, 2018-pr.

HITS

182 - Makenna Matthijs; UNCG, 2018-pr.

RUNS BATTED IN

138 - Makenna Matthijs; UNCG, 2018-pr.

DOUBLES

44 - Makenna Matthijs; UNCG, 2018-pr.

TRIPLES

4 - Timberlyn Shurbutt; Samford, 2019-pr.

HOME RUNS

36 - Jordan Gontram; UNCG, 2017-pr.

TOTAL BASES

324 - Makenna Matthijs; UNCG, 2018-pr.

WALKS

103 - Delaney Cumbie; UNCG, 2019-pr.

STOLEN BASES

69 - Kelly Warren; ETSU, 2018-pr.

STOLEN BASE PCT [Minimum 50 steal attempts]

.831 - Kelly Warren (69-83); ETSU, 2018-pr.

EARNED RUN AVERAGE [Minimum 200 IP]

2.47 - Morgan Scott; UNCG, 2020-pr.

WINS

33 - Morgan Scott; UNCG, 2020-pr.

SAVES

7 - Taylor Boling; ETSU, 2019-pr.

OPPONENT BATTING AVERAGE [Minimum 200 IP]

.216 - Morgan Scott; UNCG, 2020-pr.

APPEARANCES

63 - Taylor Boling; ETSU, 2019-pr.

GAMES STARTED

51 - Morgan Scott; UNCG, 2020-pr.

COMPLETE GAMES

36 - Morgan Scott; UNCG, 2020-pr.

SHUTOUTS

7 - Morgan Scott; UNCG, 2020-pr.
7 - Jayme Eilers; Western Carolina, 2020-pr.

INNINGS PITCHED

334.1 - Morgan Scott; UNCG, 2020-pr.

STRIKEOUTS

371 - Morgan Scott; UNCG, 2020-pr.

STRIKEOUTS PER 7 INNINGS [Minimum 200 IP]

7.77 - Morgan Scott (344 so, 305.2 ip); UNCG, 2020-pr.

WALKS PER 7 INNINGS [Minimum 200 IP]

2.43 - Morgan Scott (106 bb, 305.2 ip); UNCG, 2020-pr.

HITS ALLOWED PER 7 INNINGS [Minimum 200 IP]

5.65 - Morgan Scott (243 h, 305.2 ip); UNCG, 2020-pr.

SoCON PLAYERS OF THE WEEK

Feb. 14 Timberlyn Shurbutt, Sr., 3B, Samford
Feb. 21 Jordan Gontram, Gr., DP, UNCG
Feb. 28 Blayke Batten, Jr., 1B/RF, UNCG
March 7
March 14
March 21
March 28
April 4
April 11
April 18
April 25
May 2
May 9

SoCON PITCHERS OF THE WEEK

Feb. 14 Jayme Eilers, Jr., Western Carolina
Feb. 21 Brooke Parrott, Jr., Chattanooga
Feb. 28 Jordan Walters, So., Samford
March 7
March 14
March 21
March 28
April 4
April 11
April 18
April 25
May 2
May 9

SoCON PLAYERS OF THE MONTH

February
March
April
May

SoCON PITCHERS OF THE MONTH

February
March
April
May

SoCON STUDENT-ATHLETES OF THE WEEK

Feb. 23 Brooke Parrott, Jr., Chattanooga

SoCON COACHING RECORDS

Coach, school	Career (yrs.)	School (yrs.)	SoCon (yrs.)
Belinda Hendrix, ETSU	651-185 (18th)	4-11 (1st)	0-0 (1st)
Stacey Johnson-Whitfield, Furman (int.)	6-7 (1st)	Same	0-0 (1st)
Lindsay Fico, Mercer	73-70 (4th)	3-12 (1st)	0-0 (1st)
Janelle Breneman, UNCG	424-420 (19th)	293-182 (10th)	88-59 (10th)
Kimball Cassidy, Samford	327-132-1 (12th)	8-6 (1st)	0-0 (1st)
Frank Reed, Chattanooga	1,144-561 (33rd)	668-474 (22nd)	248-123 (22nd)
Jim Clift, Western Carolina	208-344 (11th)	Same	70-104 (11th)

Preseason predictions

Preseason Poll

Team (first-place votes)	Points
1. UNCG (5)	35
2. Western Carolina (1)	30
3. Chattanooga (1)	25
4. Mercer	18
Samford	18
6. Furman	12
7. ETSU	9

Preseason Player of the Year

Makenna Matthijs, UNCG, Gr., OF

Preseason Pitcher of the Year

Morgan Scott, UNCG, Jr.

Preseason All-SoCon First Team

P Morgan Scott, UNCG, Jr.
C Jayme Eilers, Western Carolina, Jr.
C Delaney Cumbie, UNCG, Sr.
IF Riley Ludlam, Furman, Jr.
IF Maycin Brown, UNCG, Jr.
IF Timberlyn Shurbutt, Samford, Sr.
IF Bailey Huneycutt, Western Carolina, Sr.
OF Kelly Warren, ETSU, R-Sr.
OF Elise Rosado, Mercer, Jr.
OF Makenna Matthijs, UNCG, Gr.
OF Jeralynn Wells, Western Carolina, So.
DP Emily Bartlett, Furman, Sr.

Preseason All-SoCon Second Team

P Sierra Tufts, Furman, So.
P Hannah Wood, Chattanooga, Jr.
P Savannah Rice, Western Carolina, Jr.
C Natalie Morgan, Furman, Sr.
IF Annie Potter, Mercer, So.
IF Brooklynn Maxwell, UNCG, So.
IF Emily Coltharp, Chattanooga, Jr.
IF Liz Rodebaugh, Chattanooga, So.
OF Andrea Sarhatt, ETSU, Sr.
OF Ashlee Lykins, Furman, So.
OF Gracey Kruse, Chattanooga, Jr.
DP Anna-Paige Pelfrey, Western Carolina, Jr.



ETSU
(4-11, 0-0 SoCon)

F11	vs. Radford [!]	L, 5-9
F12	vs. Radford [!]	L, 3-9
F12	vs. Binghamton [!]	L, 1-9 (5)
F13	vs. Binghamton [!]	W, 8-3
F13	at Georgia Southern [!] (ESPN+)	L, 0-4
F19	vs. Morehead State [^]	W, 10-5
F19	at Gardner-Webb [^]	L, 2-3
F20	vs. Morehead State [^]	W, 6-1
F20	at Gardner-Webb [^]	W, 6-5
F25	at Kennesaw State [®]	L, 0-8 (6)
F25	vs. Georgia State [®]	L, 2-6
F26	at Georgia Tech [®] (ACC Network Extra)	L, 0-10 (5)
F26	at Georgia Tech [®] (ACC Network Extra)	L, 1-13 (5)
F27	at Kennesaw State [®]	cancel.
M1	at Presbyterian	L, 0-5
M1	at Presbyterian	L, 3-4
M5	TENNESSEE TECH	1 p.m.
M5	TENNESSEE TECH	3 p.m.
M6	TENNESSEE TECH	1 p.m.
M12	MIAMI (OHIO)	1 p.m.
M12	MIAMI (OHIO)	3 p.m.
M13	MIAMI (OHIO)	1 p.m.
M16	at App State	4 p.m.
M16	at App State	6 p.m.
M18	vs. Northwestern State [§]	12:30 p.m.
M18	at Memphis [§]	5 p.m.
M19	vs. James Madison [§]	10 a.m.
M19	vs. Northwestern State [§]	12:30 p.m.
M26	WESTERN CAROLINA*	1 p.m.
M26	WESTERN CAROLINA*	3 p.m.
M27	WESTERN CAROLINA*	1 p.m.
M29	at Virginia Tech	5 p.m.
M30	at USC Upstate	2 p.m.
M30	at USC Upstate	4 p.m.
A2	at Chattanooga [*]	1 p.m.
A2	at Chattanooga [*]	3 p.m.
A3	at Chattanooga [*]	1 p.m.
A5	GARDNER-WEBB	4 p.m.
A8	vs. NC State [@]	12 p.m.
A8	at South Carolina [@]	5 p.m.
A9	vs. NC State [@]	12 p.m.
A9	at South Carolina [@]	2:30 p.m.
A15	UNCG*	1 p.m.
A15	UNCG*	3 p.m.
A16	UNCG*	1 p.m.
A19	APP STATE	4 p.m.
A23	at Mercer [*]	1 p.m.
A23	at Mercer [*]	3 p.m.
A24	at Mercer [*]	1 p.m.
A27	at Clemson	6 p.m.
A30	SAMFORD*	1 p.m.
A30	SAMFORD*	3 p.m.
M1	SAMFORD*	1 p.m.
M7	at Furman [*]	1 p.m.
M7	at Furman [*]	3 p.m.
M8	at Furman [*]	1 p.m.
M11-14	at SoCon Championship (Greensboro, N.C.)	

! - Bash in the Boro (Statesboro, Ga.)
 ^ - Red & Black Classic (Boiling Springs, N.C.)
 % - I-75 Tournament (Kennesaw, Ga./Atlanta, Ga.)
 § - Tiger Classic (Memphis, Tenn.)
 @ - Garnett & Black Round Robin (Columbia, S.C.)



Furman
(6-7, 0-0 SoCon)

F11	NORTH DAKOTA[!] (ESPN+)	W, 3-0
F11	MARYLAND EASTERN SHORE[!] (ESPN+)	W, 13-10
F12	TARLETON STATE[!]	L, 3-10
F13	BELLARMINE[!] (ESPN+)	L, 0-9 (5)
F18	SOUTH DAKOTA[^]	L, 6-10
F18	SAINT FRANCIS[^]	L, 5-12
F19	SAINT FRANCIS[^]	W, 7-5
F19	GEORGETOWN[^]	L, 3-4
F20	GEORGETOWN[^]	L, 2-3 (8)
F22	at Georgia Tech (ACC Network Extra)	L, 0-5
F25	GEORGE MASON[®] (ESPN+)	W, 8-0 (5)
F26	GEORGE MASON[®] (ESPN3)	W, 8-0 (6)
F26	IONA[®] (ESPN3)	W, 6-2
F27	PRESBYTERIAN[®] (ESPN+)	cancel.
F27	PRESBYTERIAN[®] (ESPN+)	cancel.
M4	vs. Jacksonville State [§]	10 a.m.
M4	at Mississippi State [§] (SEC Network+)	3 p.m.
M5	vs. Alcorn State [§]	12:30 p.m.
M5	at Mississippi State [§] (SEC Network+)	5:30 p.m.
M6	vs. Jacksonville State [§]	10 a.m.
M8	at Florida State	6 p.m.
M9	at Florida A&M	3 p.m.
M9	at Florida A&M	5 p.m.
M19	at UCF	2 p.m.
M19	at UCF	4 p.m.
M20	at UCF	12 p.m.
M23	at USC Upstate	3 p.m.
M23	at USC Upstate	5 p.m.
M26	at Chattanooga [*]	1 p.m.
M26	at Chattanooga [*]	3 p.m.
M27	at Chattanooga [*]	1 p.m.
M30	COLLEGE OF CHARLESTON	4 p.m.
M30	COLLEGE OF CHARLESTON	6 p.m.
A6	at Clemson	4 p.m.
A6	at Clemson	6 p.m.
A9	at Mercer [*]	1 p.m.
A9	at Mercer [*]	3 p.m.
A10	at Mercer [*]	1 p.m.
A12	at Charleston Southern	4 p.m.
A12	at Charleston Southern	6 p.m.
A15	SAMFORD*	1 p.m.
A15	SAMFORD*	3 p.m.
A16	SAMFORD*	12 p.m.
A20	at South Carolina	3 p.m.
A20	at South Carolina	5:30 p.m.
A23	WESTERN CAROLINA*	1 p.m.
A23	WESTERN CAROLINA*	3 p.m.
A24	WESTERN CAROLINA*	1 p.m.
A27	at Georgia	6 p.m.
A30	at UNCG [*]	1 p.m.
A30	at UNCG [*]	3 p.m.
M1	at UNCG [*]	1 p.m.
M7	ETSU*	1 p.m.
M7	ETSU*	3 p.m.
M8	ETSU*	1 p.m.
M11-14	at SoCon Championship (Greensboro, N.C.)	

! - Paladin Invitational (Greenville, S.C.)
 ^ - Furman Classic (Greenville, S.C.)
 % - GVL Showdown (Greenville, S.C.)
 § - Bulldog Invitational (Starkville, Miss.)



Mercer
(3-12, 0-0 SoCon)

F11	vs. Loyola Chicago [!]	L, 5-6 (10)
F11	at #4 Florida State [!] (ACC Network Extra)	L, 0-12 (5)
F12	vs. Loyola Chicago [!]	L, 2-4
F12	vs. Kennesaw State [!]	L, 3-11 (6)
F13	vs. Loyola Chicago [!]	W, 4-3
F15	at Georgia Tech (ACC Network Extra)	L, 1-9 (6)
F18	at North Florida [^] (SWOOPLife Live)	L, 2-5
F18	at North Florida [^] (SWOOPLife Live)	L, 2-4
F19	vs. Michigan State [^]	L, 1-2 (8)
F19	at Jacksonville [^]	W, 12-1 (5)
F20	at Jacksonville [^]	W, 10-3
F25	MIDDLE TENNESSEE[®]	L, 1-2
F25	MURRAY STATE[®]	L, 0-8 (5)
F26	MURRAY STATE[®]	L, 2-3
F26	MIDDLE TENNESSEE[®]	L, 1-5
M5	at Charleston Southern	1 p.m.
M5	at Charleston Southern	3 p.m.
M6	at Charleston Southern	12 p.m.
M9	at Clemson	6 p.m.
M11	IONA[§]	6 p.m.
M12	IONA[§]	3 p.m.
M12	STETSON[§]	5 p.m.
M13	STETSON[§]	1 p.m.
M16	GEORGIA SOUTHERN	4 p.m.
M16	GEORGIA SOUTHERN	6 p.m.
M19	at Georgia [@]	2 p.m.
M19	vs. Dartmouth [@]	5 p.m.
M20	vs. Dartmouth [@]	11 a.m.
M20	at Georgia [@]	2 p.m.
M23	KENNESAW STATE	6 p.m.
M26	at UNCG [*]	1 p.m.
M26	at UNCG [*]	3 p.m.
M27	at UNCG [*]	1 p.m.
M30	FLORIDA A&M	4 p.m.
M30	FLORIDA A&M	6 p.m.
A2	SAMFORD*	2 p.m.
A2	SAMFORD*	4 p.m.
A3	SAMFORD*	1 p.m.
A6	at Kennesaw State	5 p.m.
A9	FURMAN*	2 p.m.
A9	FURMAN*	4 p.m.
A10	FURMAN*	1 p.m.
A13	AUBURN	6 p.m.
A15	at Western Carolina [*]	2 p.m.
A15	at Western Carolina [*]	4 p.m.
A16	at Western Carolina [*]	11 a.m.
A23	ETSU*	2 p.m.
A23	ETSU*	4 p.m.
A24	ETSU*	1 p.m.
A30	at Chattanooga [*]	1 p.m.
A30	at Chattanooga [*]	3 p.m.
M1	at Chattanooga [*]	2 p.m.
M6	vs. Florida Gulf Coast [§]	2:30 p.m.
M7	vs. Florida Gulf Coast [§]	9:30 a.m.
M7	at Florida	2:30 p.m.
M11-14	at SoCon Championship (Greensboro, N.C.)	

! - Joanne Graf Invitational (Tallahassee, Fla.)
 ^ - JU/UNF Invitational (Jacksonville, Fla.)
 % - Mercer Invitational (Macon, Ga.)
 § - Mercer Bears Classic (Macon, Ga.)
 @ - UGA Classic (Athens, Ga.)
 & - at Gainesville, Fla.



UNCG
(9-5, 0-0 SoCon)

F11	vs. #16 Tennessee [!]	L, 0-4
F11	at FIU [!] (CUSA.TV)	L, 3-4
F12	vs. Maryland [!]	W, 6-5 (10)
F12	vs. Maryland [!]	L, 3-5
F13	vs. FIU [!]	canc.
F16	at Campbell (ESPN+)	ppd.
F18	RIDER [^] (ESPN+)	W, 10-1 (5)
F19	GEORGE WASHINGTON [^] (ESPN3)	W, 7-3
F19	RIDER [^] (ESPN3)	W, 8-1
F20	GEORGE WASHINGTON [^] (ESPN+)	W, 10-1 (6)
F22	at NC State	L, 3-4
F25	LOYOLA CHICAGO [^] (ESPN+)	W, 4-1
F26	TOWSON [^] (ESPN3)	W, 4-1
F26	BUCKNELL [^] (ESPN3)	W, 10-1
F27	VIRGINIA [^] (ESPN+)	W, 6-4
M3	#12 OREGON	L, 4-12 (10)
M4	vs. Connecticut [§]	3:30 p.m.
M5	vs. Penn State [§]	5:30 p.m.
M6	vs. Penn State [§]	3 p.m.
M6	at North Carolina [§] (ACC Network Extra)	5:30 p.m.
M8	BOSTON COLLEGE	4 p.m.
M10	MICHIGAN STATE [@]	6 p.m.
M11	SAINT FRANCIS (PA.) [@]	5 p.m.
M12	MICHIGAN STATE [@]	5 p.m.
M12	SAINT FRANCIS (PA.) [@]	7:30 p.m.
M13	DELAWARE STATE [@]	2 p.m.
M16	at Charlotte	4 p.m.
M19	at Elon	1 p.m.
M19	at Elon	3:30 p.m.
M20	ELON	1 p.m.
M26	MERCER [*]	1 p.m.
M26	MERCER [*]	3:30 p.m.
M27	MERCER [*]	1 p.m.
M30	RADFORD	3 p.m.
M30	RADFORD	5:30 p.m.
A2	at Western Carolina [*]	1 p.m.
A2	at Western Carolina [*]	3:30 p.m.
A3	at Western Carolina [*]	1 p.m.
A6	DUKE	6 p.m.
A9	CHATTANOOGA [*]	1 p.m.
A9	CHATTANOOGA [*]	3:30 p.m.
A10	CHATTANOOGA [*]	1 p.m.
A15	at ETSU [*]	1 p.m.
A15	at ETSU [*]	3 p.m.
A16	at ETSU [*]	1 p.m.
A23	vs. East Carolina&	11 a.m.
A23	at Tennessee&	4 p.m.
A24	vs. East Carolina&	10:30 a.m.
A30	FURMAN [*]	1 p.m.
A30	FURMAN [*]	3:30 p.m.
M1	FURMAN [*]	1 p.m.
M4	CHARLOTTE	4 p.m.
M7	at Samford [*]	2 p.m.
M7	at Samford [*]	4 p.m.
M8	at Samford [*]	2 p.m.
M11-14	at SoCon Championship (Greensboro, N.C.)	

! - Felsberg Invitational (Miami, Fla.)
 ^ - Spiro Classic (Greensboro, N.C.)
 % - UNCG Invitational (Greensboro, N.C.)
 § - Carolina Classic (Chapel Hill, N.C.)
 @ - Spartan Classic (Greensboro, N.C.)
 & - Lady Vol Challenge (Knoxville, Tenn.)



Samford
(8-6, 0-0 SoCon)

F11	vs. North Alabama [!] (CUSA.TV)	L, 4-5 (9)
F11	vs. Saint Louis [!] (CUSA.TV)	L, 1-8
F12	vs. Saint Louis [!] (CUSA.TV)	W, 9-0 (5)
F12	at Southern Miss [!] (CUSA.TV)	W, 10-6
F13	at Southern Miss [!] (CUSA.TV)	W, 6-0
F18	at Kennesaw State (YouTube)	W, 2-1
F18	at Kennesaw State (YouTube)	W, 5-0
F20	KENNESAW STATE (ESPN+)	W, 1-0
F20	KENNESAW STATE (ESPN+)	W, 6-1
F26	BOSTON COLLEGE [^] (ESPN3)	L, 0-1
F26	INDIANA STATE [^] (ESPN3)	W, 1-0
F27	BOSTON COLLEGE [^] (ESPN+)	canc.
F27	INDIANA STATE [^] (ESPN+)	L, 5-7
M1	at North Alabama	L, 6-8
M1	at North Alabama	L, 2-3
M4	vs. Saint Louis [§]	11:30 a.m.
M4	vs. Western Kentucky [§]	2 p.m.
M5	vs. Saint Louis [§]	11:30 a.m.
M5	vs. Western Kentucky [§]	2 p.m.
M6	at Ole Miss [§] (SEC Network+)	1:30 p.m.
M8	UAB	7 p.m.
M11	vs. Austin Peay [§]	2 p.m.
M11	at Jacksonville State [§]	4:30 p.m.
M12	vs. Austin Peay [§]	1 p.m.
M12	at Jacksonville State [§]	6 p.m.
M18	COLGATE	4 p.m.
M18	COLGATE	6 p.m.
M19	COLGATE	2 p.m.
M23	JACKSONVILLE STATE	4 p.m.
M23	JACKSONVILLE STATE	6 p.m.
M26	at Mississippi State	3 p.m.
M26	at Mississippi State	5 p.m.
M30	TROY	5 p.m.
M30	TROY	7 p.m.
A2	at Mercer [*]	2 p.m.
A2	at Mercer [*]	4 p.m.
A3	at Mercer [*]	2 p.m.
A6	at UAB	7 p.m.
A9	WESTERN CAROLINA [*]	2 p.m.
A9	WESTERN CAROLINA [*]	4 p.m.
A10	WESTERN CAROLINA [*]	2 p.m.
A15	at Furman [*]	2 p.m.
A15	at Furman [*]	4 p.m.
A16	at Furman [*]	2 p.m.
A19	NORTH ALABAMA	4 p.m.
A19	NORTH ALABAMA	6 p.m.
A23	CHATTANOOGA [*]	2 p.m.
A23	CHATTANOOGA [*]	4 p.m.
A24	CHATTANOOGA [*]	2 p.m.
A30	at ETSU [*]	2 p.m.
A30	at ETSU [*]	4 p.m.
M1	at ETSU [*]	2 p.m.
M7	UNCG [*]	2 p.m.
M7	UNCG [*]	4 p.m.
M8	UNCG [*]	2 p.m.
M11-14	at SoCon Championship (Greensboro, N.C.)	

! - Black and Gold Invitational (Hattiesburg, Miss.)
 ^ - Bulldog Classic (Birmingham, Ala.)
 % - Ole Miss Invitational (Oxford, Miss.)
 § - JSU Invitational (Jacksonville, Ala.)



Chattanooga
(7-7, 0-0 SoCon)

F11	vs. UT Martin [!]	L, 1-7
F11	at Northwestern State [!] (DemonTV)	L, 0-1
F12	vs. Baylor [!]	L, 5-10
F12	vs. Arkansas-Pine Bluff [!]	W, 17-0 (5)
F13	at Northwestern State [!] (DemonTV)	canc.
F18	SIUE [^]	W, 3-2
F18	NORTHWESTERN STATE [^]	L, 1-3
F19	RADFORD [^]	W, 4-0
F19	TENNESSEE TECH [^]	L, 1-4
F20	SIUE [^]	W, 8-6
F20	PURDUE FORT WAYNE [^]	W, 8-2
F25	SIU [^]	W, 4-0
F25	NORTHERN ILLINOIS [^]	L, 1-6
F26	BUTLER [^]	W, 11-1 (5)
F26	EASTERN KENTUCKY [^]	L, 5-11
F27	EASTERN KENTUCKY [^]	canc.
M4	vs. North Carolina A&T [§]	11 a.m.
M4	vs. Toledo [§]	1:30 p.m.
M5	vs. Toledo [§]	11 a.m.
M5	vs. North Carolina A&T [§]	1:30 p.m.
M6	at Auburn [§]	1:30 p.m.
M11	vs. Northern Iowa [§]	9:30 a.m.
M11	vs. Illinois State [§]	5 p.m.
M12	vs. UT Martin [§]	9:30 a.m.
M12	at Middle Tennessee [§]	12 p.m.
M13	vs. Illinois State [§]	12:30 p.m.
M15	GEORGIA STATE	1 p.m.
M15	GEORGIA STATE	3 p.m.
M16	WESTERN KENTUCKY	1 p.m.
M16	WESTERN KENTUCKY	3 p.m.
M18	BUCKNELL [§]	3 p.m.
M18	SOUTHEASTERN LOUISIANA [§]	5:30 p.m.
M19	SOUTHEASTERN LOUISIANA [§]	12:30 p.m.
M19	BUCKNELL [§]	3 p.m.
M20	SOUTHEASTERN LOUISIANA [§]	1 p.m.
M23	at Lipscomb	5 p.m.
M26	FURMAN [*]	1 p.m.
M26	FURMAN [*]	3 p.m.
M27	FURMAN [*]	2 p.m.
A2	ETSU [*]	1 p.m.
A2	ETSU [*]	3 p.m.
A2	ETSU [*]	2 p.m.
A9	at UNCG [*]	1 p.m.
A9	at UNCG [*]	3:30 p.m.
A10	at UNCG [*]	1 p.m.
A13	at Austin Peay	5:30 p.m.
A19	TENNESSEE TECH	5:30 p.m.
A20	at Auburn	5 p.m.
A23	at Samford [*]	2 p.m.
A23	at Samford [*]	4 p.m.
A24	at Samford [*]	2 p.m.
A30	MERCER [*]	1 p.m.
A30	MERCER [*]	3 p.m.
M1	MERCER [*]	1 p.m.
M7	at Western Carolina [*]	1 p.m.
M7	at Western Carolina [*]	3 p.m.
M8	at Western Carolina [*]	1 p.m.
M11-14	at SoCon Championship (Greensboro, N.C.)	

! - Natchitoches Historic District Development Commission Lady Demon Classic (Natchitoches, La.)
 ^ - Chattanooga Challenge (Chattanooga, Tenn.)
 % - Frost Challenge (Chattanooga, Tenn.)
 § - Jane B. Moore Memorial at Auburn (Auburn, Ala.)
 @ - MTSU Invitational (Murfreesboro, Tenn.)
 & - Chatty Patty's (Chattanooga, Tenn.)



Western Carolina
(9-8, 0-0 SoCon)

F11	vs. Winthrop [!]	W, 3-0
F11	at Jacksonville [!] (YouTube)	W, 2-1
F12	vs. Campbell [!]	L, 1-3
F12	at Jacksonville [!] (YouTube)	W, 4-3 (9)
F13	vs. NC State [!] (SWOOLife Live)	W, 1-0
F16	GEORGIA STATE	W, 5-1
F16	GEORGIA STATE	L, 1-2
F18	vs. Towson [^]	W, 5-0
F18	vs. Youngstown State [^]	W, 2-1
F19	vs. Ball State [^]	L, 6-7
F19	at Winthrop [^]	W, 6-4
F20	vs. Towson [^]	L, 1-2
F25	vs. App State [%]	L, 0-3
F25	vs. Connecticut [%]	L, 0-4
F26	vs. Connecticut [%]	L, 0-8
F26	at College of Charleston [%]	W, 5-4
F27	at College of Charleston [%]	W, 4-2
M2	at South Carolina State	ppd.
M2	at South Carolina State	ppd.
M11	vs. Fairfield [§]	9:30 a.m.
M12	vs. Fairfield [§]	9 a.m.
M12	vs. Norfolk State [§]	3 p.m.
M13	vs. Norfolk State [§]	9:30 a.m.
M13	at Marshall [§]	1:30 p.m.
M15	at North Carolina A&T	2 p.m.
M15	at North Carolina A&T	4 p.m.
M17	PRESBYTERIAN	3 p.m.
M17	PRESBYTERIAN	5 p.m.
M22	at Gardner-Webb	3 p.m.
M22	at Gardner-Webb	5 p.m.
M23	at App State	3 p.m.
M23	at App State	5 p.m.
M26	at ETSU [*]	1 p.m.
M26	at ETSU [*]	3 p.m.
M27	at ETSU [*]	1 p.m.
M30	at North Carolina A&T	1 p.m.
M30	at North Carolina A&T	3 p.m.
A2	UNCG[*]	1 p.m.
A2	UNCG[*]	3 p.m.
A3	UNCG[*]	1 p.m.
A6	USC UPSTATE	2 p.m.
A6	USC UPSTATE	4 p.m.
A9	at Samford [*]	2 p.m.
A9	at Samford [*]	4 p.m.
A10	at Samford [*]	2 p.m.
A13	TENNESSEE	6 p.m.
A15	MERCER[*]	2 p.m.
A15	MERCER[*]	4 p.m.
A16	MERCER[*]	11 a.m.
A23	at Furman [*]	1 p.m.
A23	at Furman [*]	3 p.m.
A24	at Furman [*]	1 p.m.
M7	CHATTANOOGA[*]	1 p.m.
M7	CHATTANOOGA[*]	3 p.m.
M8	CHATTANOOGA[*]	1 p.m.
M11-14	at SoCon Championship (Greensboro, N.C.)	

! - River City Leadoff (Jacksonville, Fla.)

^ - Winthrop Kick-Off Tournament (Rock Hill, S.C.)

% - Cougar Classic (Charleston, S.C.)

§ - Thundering Herd Invite (Huntington, W.Va.)

The Automated ScoreBook
SoCon Batting Leaders (Through games of March 3, 2022)
(All games)

Hitting minimums - 1 Games 50% of Games 2.0 AB/Game 2.5 TPA/Game
Pitching minimums - 1 Games 1.0 IP/Game

Batting avg		Slugging pct		On base pct	
1. Chattanooga	.287	1. UNCG	.512	1. Furman	.359
2. Samford	.279	2. Chattanooga	.430	2. UNCG	.349
3. UNCG	.274	3. Samford	.381	3. Samford	.343
4. Mercer	.249	4. Mercer	.339	4. Chattanooga	.334
5. ETSU	.230	5. Western Carolina	.328	5. Mercer	.333
6. Furman	.221	6. Furman	.324	6. ETSU	.319
7. Western Carolina	.206	7. ETSU	.289	7. Western Carolina	.293
Runs scored		Hits		Runs batted in	
1. UNCG	78	1. Samford	109	1. UNCG	71
2. Chattanooga	69	2. UNCG	105	2. Chattanooga	63
3. Furman	66	3. Chattanooga	102	3. Furman	52
4. Samford	58	4. Mercer	96	4. Samford	48
5. ETSU	47	5. Western Carolina	88	5. Mercer	41
6. Mercer	46	6. ETSU	82	6. Western Carolina	37
7. Western Carolina	45	7. Furman	73	7. ETSU	35
Doubles		Triples		Home runs	
1. UNCG	21	1. Mercer	5	1. UNCG	22
2. Chattanooga	20	2. ETSU	4	2. Western Carolina	14
3. Samford	15	3. UNCG	2	3. Chattanooga	9
4. Furman	14	Chattanooga	2	4. Samford	7
5. Mercer	13	Samford	2	5. Furman	6
6. ETSU	10	6. Furman	1	6. Mercer	4
Western Carolina	10			7. ETSU	1
Total bases		Total plate appearances		At bats	
1. UNCG	196	1. Western Carolina	486	1. Western Carolina	427
2. Chattanooga	153	2. Mercer	446	2. Samford	391
3. Samford	149	3. Samford	444	3. Mercer	386
4. Western Carolina	140	4. UNCG	440	4. UNCG	383
5. Mercer	131	5. ETSU	419	5. Chattanooga	356
6. Furman	107	6. Furman	407	ETSU	356
7. ETSU	103	7. Chattanooga	402	7. Furman	330
Walks		Hit by pitch		Strikeouts	
1. Furman	63	1. Western Carolina	14	1. Western Carolina	92
2. ETSU	42	2. UNCG	10	2. Furman	89
3. Mercer	40	Mercer	10	3. Mercer	79
4. Western Carolina	39	4. Chattanooga	9	Chattanooga	79
5. Samford	37	Furman	9	5. ETSU	78
UNCG	37	6. ETSU	8	6. UNCG	70
7. Chattanooga	20	7. Samford	3	7. Samford	50
Sac bunts		Sac flies		Stolen bases	
1. Samford	10	1. ETSU	8	1. ETSU	38
Chattanooga	10	2. Chattanooga	7	2. Western Carolina	20
3. Mercer	8	3. UNCG	5	3. Furman	17
4. Western Carolina	5	4. Samford	3	4. Chattanooga	12
UNCG	5	5. Mercer	2	5. Samford	10
ETSU	5	Furman	2	6. Mercer	8
7. Furman	3	7. Western Carolina	1	7. UNCG	4
Caught stealing		Steal attempts		Grounded into DP	
1. ETSU	11	1. ETSU	49	1. Mercer	3
2. Mercer	5	2. Western Carolina	22	2. Western Carolina	2
3. Samford	3	3. Furman	17	ETSU	2
4. Western Carolina	2	4. Mercer	13	4. Furman	1
5. Chattanooga	1	Chattanooga	13	Chattanooga	1
		Samford	13	Samford	1
		7. UNCG	4	UNCG	1

The Automated ScoreBook
SoCon Pitching Leaders (Through games of March 3, 2022)
(All games)

Hitting minimums - 1 Games 50% of Games 2.0 AB/Game 2.5 TPA/Game
Pitching minimums - 1 Games 1.0 IP/Game

Earned run avg		Opposing bat avg		Innings pitched	
1. Samford	1.90	1. Western Carolina	.220	1. Western Carolina	115.2
2. Western Carolina	2.12	2. UNCG	.227	2. UNCG	96.0
3. UNCG	2.26	3. Chattanooga	.230	Samford	96.0
4. Chattanooga	2.82	4. Samford	.245	4. Mercer	95.1
5. Furman	4.45	5. Mercer	.297	5. Chattanooga	92.0
6. Mercer	5.29	6. Furman	.310	6. ETSU	88.2
7. ETSU	5.84	7. ETSU	.350	7. Furman	88.0
Batters struck out		Batters SO out looking		Wins	
1. Western Carolina	119	1. Western Carolina	27	1. UNCG	9
2. Samford	87	2. UNCG	25	Western Carolina	9
3. UNCG	66	3. Samford	16	3. Samford	7
4. Chattanooga	56	4. ETSU	15	Chattanooga	7
5. ETSU	55	5. Mercer	15	5. Furman	6
6. Furman	50	6. Chattanooga	10	6. ETSU	4
7. Mercer	48	7. Furman	9	7. Mercer	1
Losses		Saves		Runners picked off	
1. Mercer	11	1. Furman	2	1. Furman	1
ETSU	11	Chattanooga	2	Mercer	1
3. Western Carolina	8	3. Samford	1		
4. Furman	7	ETSU	1		
Chattanooga	7				
6. Samford	6				
7. UNCG	5				
Sac bunts allowed		Sac flies allowed		Hits allowed	
1. Western Carolina	10	1. Mercer	6	1. UNCG	82
Mercer	10	2. Furman	5	2. Chattanooga	83
3. Samford	8	ETSU	5	3. Samford	89
4. Chattanooga	7	4. Western Carolina	3	4. Western Carolina	94
5. UNCG	5	5. Samford	2	5. Mercer	116
6. ETSU	4	UNCG	2	6. Furman	117
7. Furman	2	7. Chattanooga	1	7. ETSU	137
Runs allowed		Earned runs allowed		Walks allowed	
1. Samford	40	1. Samford	26	1. Samford	15
2. Western Carolina	46	2. UNCG	31	2. Mercer	24
3. UNCG	47	3. Western Carolina	35	3. UNCG	31
4. Chattanooga	53	4. Chattanooga	37	4. Western Carolina	36
5. Furman	75	5. Furman	56	5. Chattanooga	38
6. Mercer	78	6. Mercer	72	6. Furman	41
7. ETSU	94	7. ETSU	74	7. ETSU	42
Doubles allowed		Triples allowed		Home runs allowed	
1. Samford	13	1. UNCG	0	1. Furman	6
2. Furman	14	2. Chattanooga	1	2. Chattanooga	7
Chattanooga	14	Western Carolina	1	Samford	7
4. Western Carolina	15	ETSU	1	4. Western Carolina	9
5. UNCG	16	5. Samford	2	5. UNCG	11
6. Mercer	25	6. Furman	5	6. ETSU	12
7. ETSU	30	Mercer	5	7. Mercer	17
Wild pitches		Balks		Hit batters	
1. Furman	11			1. ETSU	15
2. Chattanooga	9			2. Western Carolina	13
Mercer	9			Mercer	13
4. UNCG	8			4. UNCG	6
5. ETSU	5			Chattanooga	6
Western Carolina	5			Furman	6
7. Samford	3			7. Samford	3

The Automated ScoreBook
SoCon Fielding Leaders (Through games of March 3, 2022)
(All games)

Hitting minimums - 1 Games 50% of Games
Pitching minimums - 1 Games 1.0 IP/Game

Fielding pct		Chances		Putouts	
1. Western Carolina	.969	1. Western Carolina	454	1. Western Carolina	347
2. Samford	.966	2. Chattanooga	422	2. Samford	288
3. UNCG	.956	3. Samford	406	UNCG	288
4. Mercer	.954	4. UNCG	405	4. Mercer	286
5. Chattanooga	.950	5. Furman	401	5. Chattanooga	276
6. ETSU	.944	6. ETSU	394	6. ETSU	266
7. Furman	.933	7. Mercer	390	7. Furman	264
Assists		Errors		Fielding double plays	
1. Chattanooga	125	1. Furman	27	1. Furman	5
2. Furman	110	2. ETSU	22	ETSU	5
3. ETSU	106	3. Chattanooga	21	Western Carolina	5
4. Samford	104	4. UNCG	18	Samford	5
5. UNCG	99	5. Mercer	18	5. Chattanooga	4
6. Western Carolina	93	6. Western Carolina	14	UNCG	4
7. Mercer	86	Samford	14	7. Mercer	1
Stolen bases against		Caught stealing by		Steal attempts against	
1. Western Carolina	23	1. ETSU	10	1. ETSU	33
ETSU	23	2. Furman	5	2. Western Carolina	28
3. Chattanooga	22	Western Carolina	5	3. Chattanooga	24
4. Furman	17	4. UNCG	4	4. Furman	22
5. Mercer	16	Mercer	4	5. Mercer	20
6. Samford	11	6. Samford	3	6. Samford	14
7. UNCG	6	7. Chattanooga	2	7. UNCG	10
Passed balls		Catchers interference			
1. ETSU	6				
UNCG	6				
3. Western Carolina	5				
4. Mercer	2				
5. Furman	1				
Samford	1				
Chattanooga	1				

The Automated ScoreBook
SoCon Batting Leaders (Through games of March 3, 2022)
(All games)

Hitting minimums - 1 Games 50% of Games 2.0 AB/Game 2.5 TPA/Game
Pitching minimums - 1 Games 1.0 IP/Game

Batting avg		Slugging pct		On base pct	
1. Sarah Squillace-SAM	.400	1. Blayne Batten-UNCG	1.000	1. Emily Bartlett-FUR	.542
2. Blayne Batten-UNCG	.382	2. M.K. Tedder-SAM	.675	2. Maycin Brown-UNCG	.472
3. Diamond Williams-MER	.378	3. Olivia Lipari-UTC	.659	3. Merritt Cahoon-SAM	.449
4. Maycin Brown-UNCG	.378	4. Maycin Brown-UNCG	.622	4. M.K. Tedder-SAM	.440
5. Merritt Cahoon-SAM	.372	5. Timberlyn Shurbutt-SAM	.583	5. Kelly Warren-ETSU	.438
6. Kelly Warren-ETSU	.372	6. Emily Bartlett-FUR	.576	6. Sarah Squillace-SAM	.436
7. Olivia Lipari-UTC	.364	7. Diamond Williams-MER	.568	7. Blayne Batten-UNCG	.432
8. Kolby Holcombe-SAM	.361	8. Myra Twitty-WCU	.531	8. Olivia Lipari-UTC	.404
9. Ashlee Lykins-FUR	.354	9. Grace Loftin-UNCG	.529	9. Bailey Huneycutt-WCU	.397
10. Kailey Snell-UTC	.353	10. Jordan Gontram-UNCG	.524	10. Kolby Holcombe-SAM	.395
Runs scored		Hits		Runs batted in	
1. M.K. Tedder-SAM	12	1. Sarah Squillace-SAM	20	1. Timberlyn Shurbutt-SAM	13
2. Olivia Lipari-UTC	11	2. Ashlee Lykins-FUR	17	2. Blayne Batten-UNCG	12
3. Ashlee Lykins-FUR	10	3. Maycin Brown-UNCG	17	3. Emily Bartlett-FUR	11
4. Timberlyn Shurbutt-SAM	10	4. Olivia Lipari-UTC	16	4. M.K. Tedder-SAM	10
5. Kelly Warren-ETSU	10	5. Merritt Cahoon-SAM	16	6. Grace Loftin-UNCG	10
6. Blayne Batten-UNCG	10	6. Kelly Warren-ETSU	16	7. Natalie Morgan-FUR	10
7. Sarah Squillace-SAM	10	7. Timberlyn Shurbutt-SAM	14	7. Makenna Matthijs-UNCG	9
8. Makenna Matthijs-UNCG	10	8. Diamond Williams-MER	14	9. Myra Twitty-WCU	9
9. Maycin Brown-UNCG	9	9. 3 tied at.....	13	10. Olivia Lipari-UTC	9
10. Riley Ludlam-FUR	9			11. Liz Rodebaugh-UTC	9
Doubles		Triples		Home runs	
1. Maycin Brown-UNCG	5	1. Olivia Lipari-UTC	2	1. Blayne Batten-UNCG	5
2. Emily Bartlett-FUR	5	2. Blayne Batten-UNCG	2	2. Myra Twitty-WCU	4
3. Gracey Kruse-UTC	4	3. Kelly Warren-ETSU	2	3. Savannah Rice-WCU	4
4. M.K. Tedder-SAM	4	4. 10 tied at.....	1	4. Hannah Kincer-UNCG	3
5. Presley Williamson-UTC	4			5. Timberlyn Shurbutt-SAM	3
6. 9 tied at.....	3			6. Makenna Matthijs-UNCG	3
				7. M.K. Tedder-SAM	3
				8. 13 tied at.....	2
Total bases		Walks		Hit by pitch	
1. Blayne Batten-UNCG	34	1. Tori Hedgecock-MER	13	1. Kaili Phillips-UTC	5
2. Olivia Lipari-UTC	29	2. Emily Bartlett-FUR	11	2. Emily Bartlett-FUR	4
3. Maycin Brown-UNCG	28	3. Bailey Huneycutt-WCU	10	3. Kenlie Harvey-MER	4
4. Timberlyn Shurbutt-SAM	28	4. M.K. Tedder-SAM	10	4. Delaney Cumbie-UNCG	4
5. M.K. Tedder-SAM	27	5. Jessie Shipley-UNCG	8	5. Grace Prom-MER	3
6. Myra Twitty-WCU	26	6. Delaney Cumbie-UNCG	8	6. Jeralynn Wells-WCU	3
7. Sarah Squillace-SAM	22	7. Lauralee Scott-FUR	8	7. Kasidy Dunn-ETSU	3
8. Makenna Matthijs-UNCG	22	8. Marina Griffin-FUR	7	8. Natalie Henry-WCU	3
9. Jordan Gontram-UNCG	22	9. 4 tied at.....	6	9. 6 tied at.....	2
10. 3 tied at.....	21				
Sac bunts		Sac flies		Stolen bases	
1. Gwynnie Hornibrook-SAM	3	1. Riley Nayadley-ETSU	3	1. Brooklynn Brewington-WCU	9
2. Adele Braun-MER	2	2. Sara Muir-ETSU	2	2. Kelly Warren-ETSU	9
3. Acelynn Sellers-UTC	2	3. Tori Dalehite-UNCG	2	3. Ashlee Lykins-FUR	7
4. Brooklynn Maxwell-UNCG	2	4. Liz Rodebaugh-UTC	2	4. Bailey Huneycutt-WCU	5
5. Alana Collins-ETSU	2	5. Gwynnie Hornibrook-SAM	2	5. Sara Muir-ETSU	5
6. Kylie Helm-MER	2	6. 17 tied at.....	1	6. Andrea Sarhatt-ETSU	4
7. Abigal Dorsett-SAM	2			7. Emily Coltharp-UTC	4
8. 31 tied at.....	1			8. Riley Nayadley-ETSU	4
				9. 6 tied at.....	3

Total plate appearances		
1. Bailey Huneycutt-WCU		58
Brooklynn Brewington-WCU		58
3. Jeralynn Wells-WCU		55
Sarah Squillace-SAM		55
5. Myra Twitty-WCU		54
Amanda Briskin-SAM		54
7. Maycin Brown-UNCG		53
8. Annie Potter-MER		52
Ashlee Lykins-FUR		52
10. 2 tied at.....		51

Strikeouts		
1. Natalie Morgan-FUR		13
2. Bailey Huneycutt-WCU		12
3. Maycin Brown-UNCG		11
Kaili Phillips-UTC		11
5. Emily Coltharp-UTC		10
Brooklynn Brewington-WCU		10
Sara Muir-ETSU		10
8. 9 tied at.....		9

At bats		
1. Amanda Briskin-SAM		51
Brooklynn Brewington-WCU		51
3. Annie Potter-MER		50
Sarah Squillace-SAM		50
5. Jeralynn Wells-WCU		49
Myra Twitty-WCU		49
7. Timberlyn Shurbutt-SAM		48
Ashlee Lykins-FUR		48
9. Bailey Huneycutt-WCU		47
10. 2 tied at.....		46

Caught stealing		
1. Kelly Warren-ETSU		4
2. Bailey Turnbow-ETSU		2
Alyssa Woods-MER		2
Riley Nayadley-ETSU		2
5. 12 tied at.....		1

Steal attempts		
1. Kelly Warren-ETSU		13
2. Brooklynn Brewington-WCU		10
3. Ashlee Lykins-FUR		7
4. Sara Muir-ETSU		6
Riley Nayadley-ETSU		6
6. Bailey Huneycutt-WCU		5
7. Kasidy Dunn-ETSU		4
Andrea Sarhatt-ETSU		4
Emily Coltharp-UTC		4
10. 9 tied at.....		3

Grounded into DP		
1. 11 tied at.....		1

The Automated ScoreBook
SoCon Pitching Leaders (Through games of March 3, 2022)
(All games)

Hitting minimums - 1 Games 50% of Games 2.0 AB/Game 2.5 TPA/Game
Pitching minimums - 1 Games 1.0 IP/Game

<table border="0" style="width: 100%;"> <thead> <tr style="background-color: #f2f2f2;"><th style="text-align: left;">Earned run avg</th></tr> </thead> <tbody> <tr><td>1. Brooke Parrott-UTC</td><td style="text-align: right;">0.70</td></tr> <tr><td>2. Reese Byrd-UNCG</td><td style="text-align: right;">1.35</td></tr> <tr><td>3. Jayme Eilers-WCU</td><td style="text-align: right;">1.38</td></tr> <tr><td>4. McKenzie Newcomb-SAM</td><td style="text-align: right;">1.54</td></tr> <tr><td>5. Jordan Walters-SAM</td><td style="text-align: right;">1.66</td></tr> <tr><td>6. Savannah Rice-WCU</td><td style="text-align: right;">2.40</td></tr> <tr><td>7. Morgan Scott-UNCG</td><td style="text-align: right;">2.64</td></tr> <tr><td>8. Sierra Tufts-FUR</td><td style="text-align: right;">2.97</td></tr> <tr><td>9. Jordyn Partain-SAM</td><td style="text-align: right;">3.05</td></tr> <tr><td>10. Riley Tucker-ETSU</td><td style="text-align: right;">3.30</td></tr> </tbody> </table>	Earned run avg	1. Brooke Parrott-UTC	0.70	2. Reese Byrd-UNCG	1.35	3. Jayme Eilers-WCU	1.38	4. McKenzie Newcomb-SAM	1.54	5. Jordan Walters-SAM	1.66	6. Savannah Rice-WCU	2.40	7. Morgan Scott-UNCG	2.64	8. Sierra Tufts-FUR	2.97	9. Jordyn Partain-SAM	3.05	10. Riley Tucker-ETSU	3.30	<table border="0" style="width: 100%;"> <thead> <tr style="background-color: #f2f2f2;"><th style="text-align: left;">Opposing bat avg</th></tr> </thead> <tbody> <tr><td>1. Brooke Parrott-UTC</td><td style="text-align: right;">.132</td></tr> <tr><td>2. Jayme Eilers-WCU</td><td style="text-align: right;">.187</td></tr> <tr><td>3. Morgan Scott-UNCG</td><td style="text-align: right;">.220</td></tr> <tr><td>4. McKenzie Newcomb-SAM</td><td style="text-align: right;">.228</td></tr> <tr><td>5. Reese Byrd-UNCG</td><td style="text-align: right;">.229</td></tr> <tr><td>6. Savannah Rice-WCU</td><td style="text-align: right;">.230</td></tr> <tr><td>7. Jordan Walters-SAM</td><td style="text-align: right;">.237</td></tr> <tr><td>8. Izzy Alley-UTC</td><td style="text-align: right;">.242</td></tr> <tr><td>9. Tessa Juett-WCU</td><td style="text-align: right;">.253</td></tr> <tr><td>10. Sierra Tufts-FUR</td><td style="text-align: right;">.257</td></tr> </tbody> </table>	Opposing bat avg	1. Brooke Parrott-UTC	.132	2. Jayme Eilers-WCU	.187	3. Morgan Scott-UNCG	.220	4. McKenzie Newcomb-SAM	.228	5. Reese Byrd-UNCG	.229	6. Savannah Rice-WCU	.230	7. Jordan Walters-SAM	.237	8. Izzy Alley-UTC	.242	9. Tessa Juett-WCU	.253	10. Sierra Tufts-FUR	.257	<table border="0" style="width: 100%;"> <thead> <tr style="background-color: #f2f2f2;"><th style="text-align: left;">Innings pitched</th></tr> </thead> <tbody> <tr><td>1. Morgan Scott-UNCG</td><td style="text-align: right;">61.0</td></tr> <tr><td>2. McKenzie Newcomb-SAM</td><td style="text-align: right;">50.0</td></tr> <tr><td>3. Hannah Pitts-MER</td><td style="text-align: right;">49.2</td></tr> <tr><td> Savannah Rice-WCU</td><td style="text-align: right;">49.2</td></tr> <tr><td>5. Jayme Eilers-WCU</td><td style="text-align: right;">40.2</td></tr> <tr><td>6. Brooke Parrott-UTC</td><td style="text-align: right;">40.0</td></tr> <tr><td>7. Sierra Tufts-FUR</td><td style="text-align: right;">35.1</td></tr> <tr><td>8. Reese Byrd-UNCG</td><td style="text-align: right;">26.0</td></tr> <tr><td>9. Jordan Walters-SAM</td><td style="text-align: right;">25.1</td></tr> <tr><td>10. Riley Hickok-MER</td><td style="text-align: right;">24.0</td></tr> </tbody> </table>	Innings pitched	1. Morgan Scott-UNCG	61.0	2. McKenzie Newcomb-SAM	50.0	3. Hannah Pitts-MER	49.2	Savannah Rice-WCU	49.2	5. Jayme Eilers-WCU	40.2	6. Brooke Parrott-UTC	40.0	7. Sierra Tufts-FUR	35.1	8. Reese Byrd-UNCG	26.0	9. Jordan Walters-SAM	25.1	10. Riley Hickok-MER	24.0
Earned run avg																																																																	
1. Brooke Parrott-UTC	0.70																																																																
2. Reese Byrd-UNCG	1.35																																																																
3. Jayme Eilers-WCU	1.38																																																																
4. McKenzie Newcomb-SAM	1.54																																																																
5. Jordan Walters-SAM	1.66																																																																
6. Savannah Rice-WCU	2.40																																																																
7. Morgan Scott-UNCG	2.64																																																																
8. Sierra Tufts-FUR	2.97																																																																
9. Jordyn Partain-SAM	3.05																																																																
10. Riley Tucker-ETSU	3.30																																																																
Opposing bat avg																																																																	
1. Brooke Parrott-UTC	.132																																																																
2. Jayme Eilers-WCU	.187																																																																
3. Morgan Scott-UNCG	.220																																																																
4. McKenzie Newcomb-SAM	.228																																																																
5. Reese Byrd-UNCG	.229																																																																
6. Savannah Rice-WCU	.230																																																																
7. Jordan Walters-SAM	.237																																																																
8. Izzy Alley-UTC	.242																																																																
9. Tessa Juett-WCU	.253																																																																
10. Sierra Tufts-FUR	.257																																																																
Innings pitched																																																																	
1. Morgan Scott-UNCG	61.0																																																																
2. McKenzie Newcomb-SAM	50.0																																																																
3. Hannah Pitts-MER	49.2																																																																
Savannah Rice-WCU	49.2																																																																
5. Jayme Eilers-WCU	40.2																																																																
6. Brooke Parrott-UTC	40.0																																																																
7. Sierra Tufts-FUR	35.1																																																																
8. Reese Byrd-UNCG	26.0																																																																
9. Jordan Walters-SAM	25.1																																																																
10. Riley Hickok-MER	24.0																																																																
<table border="0" style="width: 100%;"> <thead> <tr style="background-color: #f2f2f2;"><th style="text-align: left;">Batters struck out</th></tr> </thead> <tbody> <tr><td>1. Jayme Eilers-WCU</td><td style="text-align: right;">57</td></tr> <tr><td>2. Morgan Scott-UNCG</td><td style="text-align: right;">55</td></tr> <tr><td>3. McKenzie Newcomb-SAM</td><td style="text-align: right;">51</td></tr> <tr><td>4. Savannah Rice-WCU</td><td style="text-align: right;">50</td></tr> <tr><td>5. Hannah Pitts-MER</td><td style="text-align: right;">35</td></tr> <tr><td>6. Brooke Parrott-UTC</td><td style="text-align: right;">28</td></tr> <tr><td>7. Sierra Tufts-FUR</td><td style="text-align: right;">25</td></tr> <tr><td>8. Allison Farr-ETSU</td><td style="text-align: right;">22</td></tr> <tr><td>9. Jordan Walters-SAM</td><td style="text-align: right;">21</td></tr> <tr><td>10. Izzy Alley-UTC</td><td style="text-align: right;">17</td></tr> </tbody> </table>	Batters struck out	1. Jayme Eilers-WCU	57	2. Morgan Scott-UNCG	55	3. McKenzie Newcomb-SAM	51	4. Savannah Rice-WCU	50	5. Hannah Pitts-MER	35	6. Brooke Parrott-UTC	28	7. Sierra Tufts-FUR	25	8. Allison Farr-ETSU	22	9. Jordan Walters-SAM	21	10. Izzy Alley-UTC	17	<table border="0" style="width: 100%;"> <thead> <tr style="background-color: #f2f2f2;"><th style="text-align: left;">Batters SO out looking</th></tr> </thead> <tbody> <tr><td>1. Morgan Scott-UNCG</td><td style="text-align: right;">20</td></tr> <tr><td>2. Savannah Rice-WCU</td><td style="text-align: right;">12</td></tr> <tr><td> Jayme Eilers-WCU</td><td style="text-align: right;">12</td></tr> <tr><td> Hannah Pitts-MER</td><td style="text-align: right;">12</td></tr> <tr><td>5. McKenzie Newcomb-SAM</td><td style="text-align: right;">10</td></tr> <tr><td>6. Allison Farr-ETSU</td><td style="text-align: right;">7</td></tr> <tr><td>7. Brooke Parrott-UTC</td><td style="text-align: right;">6</td></tr> <tr><td> Jordan Walters-SAM</td><td style="text-align: right;">6</td></tr> <tr><td>9. Sierra Tufts-FUR</td><td style="text-align: right;">5</td></tr> <tr><td>10. 2 tied at.....</td><td style="text-align: right;">4</td></tr> </tbody> </table>	Batters SO out looking	1. Morgan Scott-UNCG	20	2. Savannah Rice-WCU	12	Jayme Eilers-WCU	12	Hannah Pitts-MER	12	5. McKenzie Newcomb-SAM	10	6. Allison Farr-ETSU	7	7. Brooke Parrott-UTC	6	Jordan Walters-SAM	6	9. Sierra Tufts-FUR	5	10. 2 tied at.....	4	<table border="0" style="width: 100%;"> <thead> <tr style="background-color: #f2f2f2;"><th style="text-align: left;">Wins</th></tr> </thead> <tbody> <tr><td>1. Brooke Parrott-UTC</td><td style="text-align: right;">5</td></tr> <tr><td> Morgan Scott-UNCG</td><td style="text-align: right;">5</td></tr> <tr><td>3. Savannah Rice-WCU</td><td style="text-align: right;">4</td></tr> <tr><td> Jayme Eilers-WCU</td><td style="text-align: right;">4</td></tr> <tr><td>5. Reese Byrd-UNCG</td><td style="text-align: right;">3</td></tr> <tr><td> McKenzie Newcomb-SAM</td><td style="text-align: right;">3</td></tr> <tr><td> Sierra Tufts-FUR</td><td style="text-align: right;">3</td></tr> <tr><td>8. 4 tied at.....</td><td style="text-align: right;">2</td></tr> </tbody> </table>	Wins	1. Brooke Parrott-UTC	5	Morgan Scott-UNCG	5	3. Savannah Rice-WCU	4	Jayme Eilers-WCU	4	5. Reese Byrd-UNCG	3	McKenzie Newcomb-SAM	3	Sierra Tufts-FUR	3	8. 4 tied at.....	2				
Batters struck out																																																																	
1. Jayme Eilers-WCU	57																																																																
2. Morgan Scott-UNCG	55																																																																
3. McKenzie Newcomb-SAM	51																																																																
4. Savannah Rice-WCU	50																																																																
5. Hannah Pitts-MER	35																																																																
6. Brooke Parrott-UTC	28																																																																
7. Sierra Tufts-FUR	25																																																																
8. Allison Farr-ETSU	22																																																																
9. Jordan Walters-SAM	21																																																																
10. Izzy Alley-UTC	17																																																																
Batters SO out looking																																																																	
1. Morgan Scott-UNCG	20																																																																
2. Savannah Rice-WCU	12																																																																
Jayme Eilers-WCU	12																																																																
Hannah Pitts-MER	12																																																																
5. McKenzie Newcomb-SAM	10																																																																
6. Allison Farr-ETSU	7																																																																
7. Brooke Parrott-UTC	6																																																																
Jordan Walters-SAM	6																																																																
9. Sierra Tufts-FUR	5																																																																
10. 2 tied at.....	4																																																																
Wins																																																																	
1. Brooke Parrott-UTC	5																																																																
Morgan Scott-UNCG	5																																																																
3. Savannah Rice-WCU	4																																																																
Jayme Eilers-WCU	4																																																																
5. Reese Byrd-UNCG	3																																																																
McKenzie Newcomb-SAM	3																																																																
Sierra Tufts-FUR	3																																																																
8. 4 tied at.....	2																																																																
<table border="0" style="width: 100%;"> <thead> <tr style="background-color: #f2f2f2;"><th style="text-align: left;">Saves</th></tr> </thead> <tbody> <tr><td>1. Brooke Parrott-UTC</td><td style="text-align: right;">2</td></tr> <tr><td>2. Whitley Arnott-ETSU</td><td style="text-align: right;">1</td></tr> <tr><td> Sierra Tufts-FUR</td><td style="text-align: right;">1</td></tr> <tr><td> McKenzie Newcomb-SAM</td><td style="text-align: right;">1</td></tr> <tr><td> Isabella Cear-FUR</td><td style="text-align: right;">1</td></tr> </tbody> </table>	Saves	1. Brooke Parrott-UTC	2	2. Whitley Arnott-ETSU	1	Sierra Tufts-FUR	1	McKenzie Newcomb-SAM	1	Isabella Cear-FUR	1	<table border="0" style="width: 100%;"> <thead> <tr style="background-color: #f2f2f2;"><th style="text-align: left;">Appearances</th></tr> </thead> <tbody> <tr><td>1. Brooke Parrott-UTC</td><td style="text-align: right;">10</td></tr> <tr><td>2. Morgan Scott-UNCG</td><td style="text-align: right;">10</td></tr> <tr><td>3. Hannah Pitts-MER</td><td style="text-align: right;">9</td></tr> <tr><td> McKenzie Newcomb-SAM</td><td style="text-align: right;">9</td></tr> <tr><td>5. 7 tied at.....</td><td style="text-align: right;">8</td></tr> </tbody> </table>	Appearances	1. Brooke Parrott-UTC	10	2. Morgan Scott-UNCG	10	3. Hannah Pitts-MER	9	McKenzie Newcomb-SAM	9	5. 7 tied at.....	8	<table border="0" style="width: 100%;"> <thead> <tr style="background-color: #f2f2f2;"><th style="text-align: left;">Games started</th></tr> </thead> <tbody> <tr><td>1. Morgan Scott-UNCG</td><td style="text-align: right;">8</td></tr> <tr><td>2. Savannah Rice-WCU</td><td style="text-align: right;">7</td></tr> <tr><td> Jayme Eilers-WCU</td><td style="text-align: right;">7</td></tr> <tr><td> McKenzie Newcomb-SAM</td><td style="text-align: right;">7</td></tr> <tr><td>5. Sierra Tufts-FUR</td><td style="text-align: right;">6</td></tr> <tr><td> Hannah Pitts-MER</td><td style="text-align: right;">6</td></tr> <tr><td> Riley Hickok-MER</td><td style="text-align: right;">6</td></tr> <tr><td> Brooke Parrott-UTC</td><td style="text-align: right;">6</td></tr> <tr><td>9. Reese Byrd-UNCG</td><td style="text-align: right;">5</td></tr> <tr><td>10. 5 tied at.....</td><td style="text-align: right;">4</td></tr> </tbody> </table>	Games started	1. Morgan Scott-UNCG	8	2. Savannah Rice-WCU	7	Jayme Eilers-WCU	7	McKenzie Newcomb-SAM	7	5. Sierra Tufts-FUR	6	Hannah Pitts-MER	6	Riley Hickok-MER	6	Brooke Parrott-UTC	6	9. Reese Byrd-UNCG	5	10. 5 tied at.....	4																				
Saves																																																																	
1. Brooke Parrott-UTC	2																																																																
2. Whitley Arnott-ETSU	1																																																																
Sierra Tufts-FUR	1																																																																
McKenzie Newcomb-SAM	1																																																																
Isabella Cear-FUR	1																																																																
Appearances																																																																	
1. Brooke Parrott-UTC	10																																																																
2. Morgan Scott-UNCG	10																																																																
3. Hannah Pitts-MER	9																																																																
McKenzie Newcomb-SAM	9																																																																
5. 7 tied at.....	8																																																																
Games started																																																																	
1. Morgan Scott-UNCG	8																																																																
2. Savannah Rice-WCU	7																																																																
Jayme Eilers-WCU	7																																																																
McKenzie Newcomb-SAM	7																																																																
5. Sierra Tufts-FUR	6																																																																
Hannah Pitts-MER	6																																																																
Riley Hickok-MER	6																																																																
Brooke Parrott-UTC	6																																																																
9. Reese Byrd-UNCG	5																																																																
10. 5 tied at.....	4																																																																
<table border="0" style="width: 100%;"> <thead> <tr style="background-color: #f2f2f2;"><th style="text-align: left;">Games finished</th></tr> </thead> <tbody> <tr><td>1. Reagan Lowrie-UTC</td><td style="text-align: right;">5</td></tr> <tr><td>2. Allison Farr-ETSU</td><td style="text-align: right;">4</td></tr> <tr><td> Taylor Boling-ETSU</td><td style="text-align: right;">4</td></tr> <tr><td> Isabella Cear-FUR</td><td style="text-align: right;">4</td></tr> <tr><td>5. Jordyn Partain-SAM</td><td style="text-align: right;">3</td></tr> <tr><td> Graysen Hunter-UNCG</td><td style="text-align: right;">3</td></tr> <tr><td> Katie Rearley-MER</td><td style="text-align: right;">3</td></tr> <tr><td> Hannah Pitts-MER</td><td style="text-align: right;">3</td></tr> <tr><td> Whitley Arnott-ETSU</td><td style="text-align: right;">3</td></tr> <tr><td> Brooke Parrott-UTC</td><td style="text-align: right;">3</td></tr> </tbody> </table>	Games finished	1. Reagan Lowrie-UTC	5	2. Allison Farr-ETSU	4	Taylor Boling-ETSU	4	Isabella Cear-FUR	4	5. Jordyn Partain-SAM	3	Graysen Hunter-UNCG	3	Katie Rearley-MER	3	Hannah Pitts-MER	3	Whitley Arnott-ETSU	3	Brooke Parrott-UTC	3	<table border="0" style="width: 100%;"> <thead> <tr style="background-color: #f2f2f2;"><th style="text-align: left;">Games in relief</th></tr> </thead> <tbody> <tr><td>1. Reagan Lowrie-UTC</td><td style="text-align: right;">6</td></tr> <tr><td>2. Allison Farr-ETSU</td><td style="text-align: right;">5</td></tr> <tr><td> Isabella Cear-FUR</td><td style="text-align: right;">5</td></tr> <tr><td> Taylor Boling-ETSU</td><td style="text-align: right;">5</td></tr> <tr><td>5. Brooke Parrott-UTC</td><td style="text-align: right;">4</td></tr> <tr><td> Sara Muir-ETSU</td><td style="text-align: right;">4</td></tr> <tr><td> Katie Rearley-MER</td><td style="text-align: right;">4</td></tr> <tr><td> Whitley Arnott-ETSU</td><td style="text-align: right;">4</td></tr> <tr><td>9. 5 tied at.....</td><td style="text-align: right;">3</td></tr> </tbody> </table>	Games in relief	1. Reagan Lowrie-UTC	6	2. Allison Farr-ETSU	5	Isabella Cear-FUR	5	Taylor Boling-ETSU	5	5. Brooke Parrott-UTC	4	Sara Muir-ETSU	4	Katie Rearley-MER	4	Whitley Arnott-ETSU	4	9. 5 tied at.....	3	<table border="0" style="width: 100%;"> <thead> <tr style="background-color: #f2f2f2;"><th style="text-align: left;">Sac bunts allowed</th></tr> </thead> <tbody> <tr><td>1. Hannah Pitts-MER</td><td style="text-align: right;">6</td></tr> <tr><td>2. Savannah Rice-WCU</td><td style="text-align: right;">5</td></tr> <tr><td>3. Morgan Scott-UNCG</td><td style="text-align: right;">3</td></tr> <tr><td> Riley Hickok-MER</td><td style="text-align: right;">3</td></tr> <tr><td> Izzy Alley-UTC</td><td style="text-align: right;">3</td></tr> <tr><td> Jayme Eilers-WCU</td><td style="text-align: right;">3</td></tr> <tr><td> Jordan Walters-SAM</td><td style="text-align: right;">3</td></tr> <tr><td> Jordyn Partain-SAM</td><td style="text-align: right;">3</td></tr> <tr><td>9. 3 tied at.....</td><td style="text-align: right;">2</td></tr> </tbody> </table>	Sac bunts allowed	1. Hannah Pitts-MER	6	2. Savannah Rice-WCU	5	3. Morgan Scott-UNCG	3	Riley Hickok-MER	3	Izzy Alley-UTC	3	Jayme Eilers-WCU	3	Jordan Walters-SAM	3	Jordyn Partain-SAM	3	9. 3 tied at.....	2				
Games finished																																																																	
1. Reagan Lowrie-UTC	5																																																																
2. Allison Farr-ETSU	4																																																																
Taylor Boling-ETSU	4																																																																
Isabella Cear-FUR	4																																																																
5. Jordyn Partain-SAM	3																																																																
Graysen Hunter-UNCG	3																																																																
Katie Rearley-MER	3																																																																
Hannah Pitts-MER	3																																																																
Whitley Arnott-ETSU	3																																																																
Brooke Parrott-UTC	3																																																																
Games in relief																																																																	
1. Reagan Lowrie-UTC	6																																																																
2. Allison Farr-ETSU	5																																																																
Isabella Cear-FUR	5																																																																
Taylor Boling-ETSU	5																																																																
5. Brooke Parrott-UTC	4																																																																
Sara Muir-ETSU	4																																																																
Katie Rearley-MER	4																																																																
Whitley Arnott-ETSU	4																																																																
9. 5 tied at.....	3																																																																
Sac bunts allowed																																																																	
1. Hannah Pitts-MER	6																																																																
2. Savannah Rice-WCU	5																																																																
3. Morgan Scott-UNCG	3																																																																
Riley Hickok-MER	3																																																																
Izzy Alley-UTC	3																																																																
Jayme Eilers-WCU	3																																																																
Jordan Walters-SAM	3																																																																
Jordyn Partain-SAM	3																																																																
9. 3 tied at.....	2																																																																
<table border="0" style="width: 100%;"> <thead> <tr style="background-color: #f2f2f2;"><th style="text-align: left;">Sac flies allowed</th></tr> </thead> <tbody> <tr><td>1. Whitley Arnott-ETSU</td><td style="text-align: right;">3</td></tr> <tr><td> Katie Rearley-MER</td><td style="text-align: right;">3</td></tr> <tr><td> Hannah Pitts-MER</td><td style="text-align: right;">3</td></tr> <tr><td>4. Makenzie Martin-WCU</td><td style="text-align: right;">2</td></tr> <tr><td> Isabella Cear-FUR</td><td style="text-align: right;">2</td></tr> <tr><td> Jordan Walters-SAM</td><td style="text-align: right;">2</td></tr> <tr><td>7. 9 tied at.....</td><td style="text-align: right;">1</td></tr> </tbody> </table>	Sac flies allowed	1. Whitley Arnott-ETSU	3	Katie Rearley-MER	3	Hannah Pitts-MER	3	4. Makenzie Martin-WCU	2	Isabella Cear-FUR	2	Jordan Walters-SAM	2	7. 9 tied at.....	1	<table border="0" style="width: 100%;"> <thead> <tr style="background-color: #f2f2f2;"><th style="text-align: left;">Losses</th></tr> </thead> <tbody> <tr><td>1. Hannah Pitts-MER</td><td style="text-align: right;">5</td></tr> <tr><td>2. Whitley Arnott-ETSU</td><td style="text-align: right;">4</td></tr> <tr><td> Izzy Alley-UTC</td><td style="text-align: right;">4</td></tr> <tr><td> Riley Hickok-MER</td><td style="text-align: right;">4</td></tr> <tr><td>5. Morgan Scott-UNCG</td><td style="text-align: right;">3</td></tr> <tr><td> Riley Tucker-ETSU</td><td style="text-align: right;">3</td></tr> <tr><td> Jayme Eilers-WCU</td><td style="text-align: right;">3</td></tr> <tr><td> McKenzie Newcomb-SAM</td><td style="text-align: right;">3</td></tr> <tr><td> Tessa Juett-WCU</td><td style="text-align: right;">3</td></tr> <tr><td> Sierra Tufts-FUR</td><td style="text-align: right;">3</td></tr> </tbody> </table>	Losses	1. Hannah Pitts-MER	5	2. Whitley Arnott-ETSU	4	Izzy Alley-UTC	4	Riley Hickok-MER	4	5. Morgan Scott-UNCG	3	Riley Tucker-ETSU	3	Jayme Eilers-WCU	3	McKenzie Newcomb-SAM	3	Tessa Juett-WCU	3	Sierra Tufts-FUR	3	<table border="0" style="width: 100%;"> <thead> <tr style="background-color: #f2f2f2;"><th style="text-align: left;">Runners picked off</th></tr> </thead> <tbody> <tr><td>1. Tori Ash-MER</td><td style="text-align: right;">1</td></tr> <tr><td> Riley Ludlam-FUR</td><td style="text-align: right;">1</td></tr> </tbody> </table>	Runners picked off	1. Tori Ash-MER	1	Riley Ludlam-FUR	1																						
Sac flies allowed																																																																	
1. Whitley Arnott-ETSU	3																																																																
Katie Rearley-MER	3																																																																
Hannah Pitts-MER	3																																																																
4. Makenzie Martin-WCU	2																																																																
Isabella Cear-FUR	2																																																																
Jordan Walters-SAM	2																																																																
7. 9 tied at.....	1																																																																
Losses																																																																	
1. Hannah Pitts-MER	5																																																																
2. Whitley Arnott-ETSU	4																																																																
Izzy Alley-UTC	4																																																																
Riley Hickok-MER	4																																																																
5. Morgan Scott-UNCG	3																																																																
Riley Tucker-ETSU	3																																																																
Jayme Eilers-WCU	3																																																																
McKenzie Newcomb-SAM	3																																																																
Tessa Juett-WCU	3																																																																
Sierra Tufts-FUR	3																																																																
Runners picked off																																																																	
1. Tori Ash-MER	1																																																																
Riley Ludlam-FUR	1																																																																

Wild pitches	
1. Riley Hickok-MER	7
2. Izzy Alley-UTC	6
3. Lauralee Scott-FUR	5
Morgan Scott-UNCG	5
5. Whitley Arnott-ETSU	4
6. Tessa Juett-WCU	3
Sierra Tufts-FUR	3
8. Jordan Walters-SAM	2
9. 15 tied at.....	1

Balks

Hit batters	
1. Savannah Rice-WCU	8
Hannah Pitts-MER	8
3. Reese Byrd-UNCG	5
4. Allison Farr-ETSU	4
5. Jayme Eilers-WCU	3
Whitley Arnott-ETSU	3
Sara Muir-ETSU	3
Katie Rearley-MER	3
9. 7 tied at.....	2

Intentional BB allowed

Hits allowed

Runs allowed

1. Brooke Parrott-UTC	18
2. Tessa Juett-WCU	21
Hannah Wood-UTC	21
4. Isabella Cear-FUR	22
Reese Byrd-UNCG	22
Jordan Walters-SAM	22
7. Izzy Alley-UTC	23
8. Jordyn Partain-SAM	24
9. Katie Rearley-MER	25
10. Jayme Eilers-WCU	26

1. Brooke Parrott-UTC	4
2. Reese Byrd-UNCG	7
3. Jordan Walters-SAM	8
4. Jayme Eilers-WCU	9
5. Isabella Cear-FUR	11
6. Hannah Wood-UTC	13
Riley Tucker-ETSU	13
Jordyn Partain-SAM	13
9. Lauralee Scott-FUR	15
10. Tessa Juett-WCU	16

Earned runs allowed

Walks allowed

Doubles allowed

1. Brooke Parrott-UTC	4
2. Reese Byrd-UNCG	5
3. Jordan Walters-SAM	6
4. Hannah Wood-UTC	7
5. Jayme Eilers-WCU	8
6. Jordyn Partain-SAM	9
7. Isabella Cear-FUR	10
Tessa Juett-WCU	10
9. McKenzie Newcomb-SAM	11
Izzy Alley-UTC	11

1. Isabella Cear-FUR	2
2. McKenzie Newcomb-SAM	3
3. Hannah Pitts-MER	4
4. Jordyn Partain-SAM	5
Katie Rearley-MER	5
Riley Tucker-ETSU	5
7. Hannah Wood-UTC	6
Reese Byrd-UNCG	6
9. Jordan Walters-SAM	7
Allison Farr-ETSU	7

1. Jordan Walters-SAM	1
2. Lauralee Scott-FUR	2
Jayme Eilers-WCU	2
4. Riley Tucker-ETSU	3
Izzy Alley-UTC	3
Brooke Parrott-UTC	3
Isabella Cear-FUR	3
8. Tessa Juett-WCU	4
9. Jordyn Partain-SAM	5
Hannah Wood-UTC	5

Triples allowed

Home runs allowed

1. Whitley Arnott-ETSU	0
Jordan Walters-SAM	0
Savannah Rice-WCU	0
Allison Farr-ETSU	0
Morgan Scott-UNCG	0
Riley Tucker-ETSU	0
Izzy Alley-UTC	0
Sierra Tufts-FUR	0
Reese Byrd-UNCG	0
Tessa Juett-WCU	0

1. Hannah Wood-UTC	0
Tessa Juett-WCU	0
Jordan Walters-SAM	0
4. Izzy Alley-UTC	1
Reese Byrd-UNCG	1
Sierra Tufts-FUR	1
7. Isabella Cear-FUR	2
Riley Tucker-ETSU	2
Whitley Arnott-ETSU	2
Lauralee Scott-FUR	2

The Automated ScoreBook
SoCon Fielding Leaders (Through games of March 3, 2022)
(All games)

Hitting minimums - 1 Games 50% of Games
Pitching minimums - 1 Games 1.0 IP/Game

<table border="0"> <thead> <tr> <th colspan="2">Fielding pct</th> </tr> </thead> <tbody> <tr><td>1. Samantha Reelee-WCU</td><td>1.000</td></tr> <tr><td>Diamond Williams-MER</td><td>1.000</td></tr> <tr><td>Samantha Lagrama-UNCG</td><td>1.000</td></tr> <tr><td>Jessie Shipley-UNCG</td><td>1.000</td></tr> <tr><td>Adele Braun-MER</td><td>1.000</td></tr> <tr><td>Jeralynn Wells-WCU</td><td>1.000</td></tr> <tr><td>Kylie Helm-MER</td><td>1.000</td></tr> <tr><td>Sara Muir-ETSU</td><td>1.000</td></tr> <tr><td>Emily Glasscock-ETSU</td><td>1.000</td></tr> <tr><td>Blayke Batten-UNCG</td><td>1.000</td></tr> </tbody> </table>	Fielding pct		1. Samantha Reelee-WCU	1.000	Diamond Williams-MER	1.000	Samantha Lagrama-UNCG	1.000	Jessie Shipley-UNCG	1.000	Adele Braun-MER	1.000	Jeralynn Wells-WCU	1.000	Kylie Helm-MER	1.000	Sara Muir-ETSU	1.000	Emily Glasscock-ETSU	1.000	Blayke Batten-UNCG	1.000	<table border="0"> <thead> <tr> <th colspan="2">Chances</th> </tr> </thead> <tbody> <tr><td>1. Samantha Reelee-WCU</td><td>131</td></tr> <tr><td>2. Emily Bartlett-FUR</td><td>111</td></tr> <tr><td>3. Kolby Holcombe-SAM</td><td>89</td></tr> <tr><td>4. Merritt Cahoon-SAM</td><td>88</td></tr> <tr><td>5. Acelynn Sellers-UTC</td><td>78</td></tr> <tr><td>6. Natalie Morgan-FUR</td><td>61</td></tr> <tr><td>7. M.K. Tedder-SAM</td><td>60</td></tr> <tr><td>Myra Twitty-WCU</td><td>60</td></tr> <tr><td>9. Delaney Cumbie-UNCG</td><td>58</td></tr> <tr><td>10. 2 tied at.....</td><td>55</td></tr> </tbody> </table>	Chances		1. Samantha Reelee-WCU	131	2. Emily Bartlett-FUR	111	3. Kolby Holcombe-SAM	89	4. Merritt Cahoon-SAM	88	5. Acelynn Sellers-UTC	78	6. Natalie Morgan-FUR	61	7. M.K. Tedder-SAM	60	Myra Twitty-WCU	60	9. Delaney Cumbie-UNCG	58	10. 2 tied at.....	55	<table border="0"> <thead> <tr> <th colspan="2">Putouts</th> </tr> </thead> <tbody> <tr><td>1. Samantha Reelee-WCU</td><td>122</td></tr> <tr><td>2. Emily Bartlett-FUR</td><td>108</td></tr> <tr><td>3. Kolby Holcombe-SAM</td><td>84</td></tr> <tr><td>4. Merritt Cahoon-SAM</td><td>82</td></tr> <tr><td>5. Acelynn Sellers-UTC</td><td>68</td></tr> <tr><td>6. Myra Twitty-WCU</td><td>58</td></tr> <tr><td>7. Delaney Cumbie-UNCG</td><td>53</td></tr> <tr><td>8. Diamond Williams-MER</td><td>50</td></tr> <tr><td>9. Samantha Lagrama-UNCG</td><td>47</td></tr> <tr><td>10. Reagan Armour-UTC</td><td>46</td></tr> </tbody> </table>	Putouts		1. Samantha Reelee-WCU	122	2. Emily Bartlett-FUR	108	3. Kolby Holcombe-SAM	84	4. Merritt Cahoon-SAM	82	5. Acelynn Sellers-UTC	68	6. Myra Twitty-WCU	58	7. Delaney Cumbie-UNCG	53	8. Diamond Williams-MER	50	9. Samantha Lagrama-UNCG	47	10. Reagan Armour-UTC	46
Fielding pct																																																																				
1. Samantha Reelee-WCU	1.000																																																																			
Diamond Williams-MER	1.000																																																																			
Samantha Lagrama-UNCG	1.000																																																																			
Jessie Shipley-UNCG	1.000																																																																			
Adele Braun-MER	1.000																																																																			
Jeralynn Wells-WCU	1.000																																																																			
Kylie Helm-MER	1.000																																																																			
Sara Muir-ETSU	1.000																																																																			
Emily Glasscock-ETSU	1.000																																																																			
Blayke Batten-UNCG	1.000																																																																			
Chances																																																																				
1. Samantha Reelee-WCU	131																																																																			
2. Emily Bartlett-FUR	111																																																																			
3. Kolby Holcombe-SAM	89																																																																			
4. Merritt Cahoon-SAM	88																																																																			
5. Acelynn Sellers-UTC	78																																																																			
6. Natalie Morgan-FUR	61																																																																			
7. M.K. Tedder-SAM	60																																																																			
Myra Twitty-WCU	60																																																																			
9. Delaney Cumbie-UNCG	58																																																																			
10. 2 tied at.....	55																																																																			
Putouts																																																																				
1. Samantha Reelee-WCU	122																																																																			
2. Emily Bartlett-FUR	108																																																																			
3. Kolby Holcombe-SAM	84																																																																			
4. Merritt Cahoon-SAM	82																																																																			
5. Acelynn Sellers-UTC	68																																																																			
6. Myra Twitty-WCU	58																																																																			
7. Delaney Cumbie-UNCG	53																																																																			
8. Diamond Williams-MER	50																																																																			
9. Samantha Lagrama-UNCG	47																																																																			
10. Reagan Armour-UTC	46																																																																			
<table border="0"> <thead> <tr> <th colspan="2">Assists</th> </tr> </thead> <tbody> <tr><td>1. Kailey Snell-UTC</td><td>38</td></tr> <tr><td>2. Timberlyn Shurbutt-SAM</td><td>33</td></tr> <tr><td>3. Alex Rose Molinar-FUR</td><td>29</td></tr> <tr><td>M.K. Tedder-SAM</td><td>29</td></tr> <tr><td>5. Chloe Fabio-FUR</td><td>28</td></tr> <tr><td>6. Maycin Brown-UNCG</td><td>27</td></tr> <tr><td>7. Lindsay Perillo-WCU</td><td>25</td></tr> <tr><td>8. Annie Potter-MER</td><td>24</td></tr> <tr><td>Kailli Phillips-UTC</td><td>24</td></tr> <tr><td>10. Brooklynn Maxwell-UNCG</td><td>23</td></tr> </tbody> </table>	Assists		1. Kailey Snell-UTC	38	2. Timberlyn Shurbutt-SAM	33	3. Alex Rose Molinar-FUR	29	M.K. Tedder-SAM	29	5. Chloe Fabio-FUR	28	6. Maycin Brown-UNCG	27	7. Lindsay Perillo-WCU	25	8. Annie Potter-MER	24	Kailli Phillips-UTC	24	10. Brooklynn Maxwell-UNCG	23	<table border="0"> <thead> <tr> <th colspan="2">Fielding double plays</th> </tr> </thead> <tbody> <tr><td>1. Kasidy Dunn-ETSU</td><td>5</td></tr> <tr><td>2. Emily Bartlett-FUR</td><td>4</td></tr> <tr><td>M.K. Tedder-SAM</td><td>4</td></tr> <tr><td>4. Alex Rose Molinar-FUR</td><td>3</td></tr> <tr><td>Chloe Fabio-FUR</td><td>3</td></tr> <tr><td>Riley Nayadley-ETSU</td><td>3</td></tr> <tr><td>Myra Twitty-WCU</td><td>3</td></tr> <tr><td>Natalie Morgan-FUR</td><td>3</td></tr> <tr><td>9. 10 tied at.....</td><td>2</td></tr> </tbody> </table>	Fielding double plays		1. Kasidy Dunn-ETSU	5	2. Emily Bartlett-FUR	4	M.K. Tedder-SAM	4	4. Alex Rose Molinar-FUR	3	Chloe Fabio-FUR	3	Riley Nayadley-ETSU	3	Myra Twitty-WCU	3	Natalie Morgan-FUR	3	9. 10 tied at.....	2	<table border="0"> <thead> <tr> <th colspan="2">Passed balls</th> </tr> </thead> <tbody> <tr><td>1. Amber Atkins-ETSU</td><td>5</td></tr> <tr><td>Samantha Reelee-WCU</td><td>5</td></tr> <tr><td>Samantha Lagrama-UNCG</td><td>5</td></tr> <tr><td>4. Delaney Cumbie-UNCG</td><td>1</td></tr> <tr><td>Presley Williamson-UTC</td><td>1</td></tr> <tr><td>Emily Glasscock-ETSU</td><td>1</td></tr> <tr><td>Tori Ash-MER</td><td>1</td></tr> <tr><td>Sophie Sumner-MER</td><td>1</td></tr> <tr><td>Kolby Holcombe-SAM</td><td>1</td></tr> <tr><td>Hana Suniga-FUR</td><td>1</td></tr> </tbody> </table>	Passed balls		1. Amber Atkins-ETSU	5	Samantha Reelee-WCU	5	Samantha Lagrama-UNCG	5	4. Delaney Cumbie-UNCG	1	Presley Williamson-UTC	1	Emily Glasscock-ETSU	1	Tori Ash-MER	1	Sophie Sumner-MER	1	Kolby Holcombe-SAM	1	Hana Suniga-FUR	1		
Assists																																																																				
1. Kailey Snell-UTC	38																																																																			
2. Timberlyn Shurbutt-SAM	33																																																																			
3. Alex Rose Molinar-FUR	29																																																																			
M.K. Tedder-SAM	29																																																																			
5. Chloe Fabio-FUR	28																																																																			
6. Maycin Brown-UNCG	27																																																																			
7. Lindsay Perillo-WCU	25																																																																			
8. Annie Potter-MER	24																																																																			
Kailli Phillips-UTC	24																																																																			
10. Brooklynn Maxwell-UNCG	23																																																																			
Fielding double plays																																																																				
1. Kasidy Dunn-ETSU	5																																																																			
2. Emily Bartlett-FUR	4																																																																			
M.K. Tedder-SAM	4																																																																			
4. Alex Rose Molinar-FUR	3																																																																			
Chloe Fabio-FUR	3																																																																			
Riley Nayadley-ETSU	3																																																																			
Myra Twitty-WCU	3																																																																			
Natalie Morgan-FUR	3																																																																			
9. 10 tied at.....	2																																																																			
Passed balls																																																																				
1. Amber Atkins-ETSU	5																																																																			
Samantha Reelee-WCU	5																																																																			
Samantha Lagrama-UNCG	5																																																																			
4. Delaney Cumbie-UNCG	1																																																																			
Presley Williamson-UTC	1																																																																			
Emily Glasscock-ETSU	1																																																																			
Tori Ash-MER	1																																																																			
Sophie Sumner-MER	1																																																																			
Kolby Holcombe-SAM	1																																																																			
Hana Suniga-FUR	1																																																																			
<table border="0"> <thead> <tr> <th colspan="2">Catchers interference</th> </tr> </thead> <tbody> <tr><td>1. Amber Atkins-ETSU</td><td>10</td></tr> <tr><td>2. Samantha Reelee-WCU</td><td>5</td></tr> <tr><td>Taylor Boling-ETSU</td><td>5</td></tr> <tr><td>4. Savannah Rice-WCU</td><td>4</td></tr> <tr><td>Allison Farr-ETSU</td><td>4</td></tr> <tr><td>6. Kolby Holcombe-SAM</td><td>3</td></tr> <tr><td>7. 10 tied at.....</td><td>2</td></tr> </tbody> </table>	Catchers interference		1. Amber Atkins-ETSU	10	2. Samantha Reelee-WCU	5	Taylor Boling-ETSU	5	4. Savannah Rice-WCU	4	Allison Farr-ETSU	4	6. Kolby Holcombe-SAM	3	7. 10 tied at.....	2	<table border="0"> <thead> <tr> <th colspan="2">Steal attempts against</th> </tr> </thead> <tbody> <tr><td>1. Samantha Reelee-WCU</td><td>28</td></tr> <tr><td>2. Amber Atkins-ETSU</td><td>22</td></tr> <tr><td>3. Jayce Purdy-UTC</td><td>15</td></tr> <tr><td>4. Kolby Holcombe-SAM</td><td>14</td></tr> <tr><td>5. Riley Ludlam-FUR</td><td>11</td></tr> <tr><td>6. Sophie Sumner-MER</td><td>10</td></tr> <tr><td>Emily Glasscock-ETSU</td><td>10</td></tr> <tr><td>Savannah Rice-WCU</td><td>10</td></tr> <tr><td>Jayme Eilers-WCU</td><td>10</td></tr> <tr><td>10. 5 tied at.....</td><td>9</td></tr> </tbody> </table>	Steal attempts against		1. Samantha Reelee-WCU	28	2. Amber Atkins-ETSU	22	3. Jayce Purdy-UTC	15	4. Kolby Holcombe-SAM	14	5. Riley Ludlam-FUR	11	6. Sophie Sumner-MER	10	Emily Glasscock-ETSU	10	Savannah Rice-WCU	10	Jayme Eilers-WCU	10	10. 5 tied at.....	9	<table border="0"> <thead> <tr> <th colspan="2">Stolen bases against</th> </tr> </thead> <tbody> <tr><td>1. Samantha Reelee-WCU</td><td>23</td></tr> <tr><td>2. Jayce Purdy-UTC</td><td>14</td></tr> <tr><td>3. Amber Atkins-ETSU</td><td>12</td></tr> <tr><td>4. Kolby Holcombe-SAM</td><td>11</td></tr> <tr><td>5. Emily Glasscock-ETSU</td><td>10</td></tr> <tr><td>6. Jayme Eilers-WCU</td><td>9</td></tr> <tr><td>Riley Ludlam-FUR</td><td>9</td></tr> <tr><td>8. Sophie Sumner-MER</td><td>8</td></tr> <tr><td>Presley Williamson-UTC</td><td>8</td></tr> <tr><td>Whitley Arnott-ETSU</td><td>8</td></tr> </tbody> </table>	Stolen bases against		1. Samantha Reelee-WCU	23	2. Jayce Purdy-UTC	14	3. Amber Atkins-ETSU	12	4. Kolby Holcombe-SAM	11	5. Emily Glasscock-ETSU	10	6. Jayme Eilers-WCU	9	Riley Ludlam-FUR	9	8. Sophie Sumner-MER	8	Presley Williamson-UTC	8	Whitley Arnott-ETSU	8						
Catchers interference																																																																				
1. Amber Atkins-ETSU	10																																																																			
2. Samantha Reelee-WCU	5																																																																			
Taylor Boling-ETSU	5																																																																			
4. Savannah Rice-WCU	4																																																																			
Allison Farr-ETSU	4																																																																			
6. Kolby Holcombe-SAM	3																																																																			
7. 10 tied at.....	2																																																																			
Steal attempts against																																																																				
1. Samantha Reelee-WCU	28																																																																			
2. Amber Atkins-ETSU	22																																																																			
3. Jayce Purdy-UTC	15																																																																			
4. Kolby Holcombe-SAM	14																																																																			
5. Riley Ludlam-FUR	11																																																																			
6. Sophie Sumner-MER	10																																																																			
Emily Glasscock-ETSU	10																																																																			
Savannah Rice-WCU	10																																																																			
Jayme Eilers-WCU	10																																																																			
10. 5 tied at.....	9																																																																			
Stolen bases against																																																																				
1. Samantha Reelee-WCU	23																																																																			
2. Jayce Purdy-UTC	14																																																																			
3. Amber Atkins-ETSU	12																																																																			
4. Kolby Holcombe-SAM	11																																																																			
5. Emily Glasscock-ETSU	10																																																																			
6. Jayme Eilers-WCU	9																																																																			
Riley Ludlam-FUR	9																																																																			
8. Sophie Sumner-MER	8																																																																			
Presley Williamson-UTC	8																																																																			
Whitley Arnott-ETSU	8																																																																			
<table border="0"> <thead> <tr> <th colspan="2">Caught stealing by</th> </tr> </thead> <tbody> <tr><td>1. Amber Atkins-ETSU</td><td>10</td></tr> <tr><td>2. Samantha Reelee-WCU</td><td>5</td></tr> <tr><td>Taylor Boling-ETSU</td><td>5</td></tr> <tr><td>4. Savannah Rice-WCU</td><td>4</td></tr> <tr><td>Allison Farr-ETSU</td><td>4</td></tr> <tr><td>6. Kolby Holcombe-SAM</td><td>3</td></tr> <tr><td>7. 10 tied at.....</td><td>2</td></tr> </tbody> </table>	Caught stealing by		1. Amber Atkins-ETSU	10	2. Samantha Reelee-WCU	5	Taylor Boling-ETSU	5	4. Savannah Rice-WCU	4	Allison Farr-ETSU	4	6. Kolby Holcombe-SAM	3	7. 10 tied at.....	2	<table border="0"> <thead> <tr> <th colspan="2">Errors</th> </tr> </thead> <tbody> <tr><td>1. Alex Rose Molinar-FUR</td><td>6</td></tr> <tr><td>Brooklynn Maxwell-UNCG</td><td>6</td></tr> <tr><td>3. Kenlie Harvey-MER</td><td>5</td></tr> <tr><td>Annie Potter-MER</td><td>5</td></tr> <tr><td>Kailli Phillips-UTC</td><td>5</td></tr> <tr><td>Lindsay Perillo-WCU</td><td>5</td></tr> <tr><td>7. 6 tied at.....</td><td>4</td></tr> </tbody> </table>	Errors		1. Alex Rose Molinar-FUR	6	Brooklynn Maxwell-UNCG	6	3. Kenlie Harvey-MER	5	Annie Potter-MER	5	Kailli Phillips-UTC	5	Lindsay Perillo-WCU	5	7. 6 tied at.....	4																																			
Caught stealing by																																																																				
1. Amber Atkins-ETSU	10																																																																			
2. Samantha Reelee-WCU	5																																																																			
Taylor Boling-ETSU	5																																																																			
4. Savannah Rice-WCU	4																																																																			
Allison Farr-ETSU	4																																																																			
6. Kolby Holcombe-SAM	3																																																																			
7. 10 tied at.....	2																																																																			
Errors																																																																				
1. Alex Rose Molinar-FUR	6																																																																			
Brooklynn Maxwell-UNCG	6																																																																			
3. Kenlie Harvey-MER	5																																																																			
Annie Potter-MER	5																																																																			
Kailli Phillips-UTC	5																																																																			
Lindsay Perillo-WCU	5																																																																			
7. 6 tied at.....	4																																																																			

The Automated ScoreBook
Game Highs for SoCon (Through games of March 3, 2022)
(All games)

TEAM GAME HIGHS

Batting

At bats:	40	-	Mercer (vs Loyola Chicago, Feb 11, 2022)
Runs scored:	17	-	Chattanooga (vs UAPB, Feb 12, 2022)
Hits:	16	-	Mercer (vs Jacksonville, Feb 20, 2022)
	16	-	Chattanooga (vs UAPB, Feb 12, 2022)
RBIs:	16	-	Chattanooga (vs UAPB, Feb 12, 2022)
Doubles:	4	-	(6 times)
Triples:	2	-	Mercer (vs Loyola Chicago, Feb 13, 2022)
	2	-	UNCG (vs Towson, Feb 26, 2022)
Home runs:	3	-	(4 times)
Total bases:	31	-	Chattanooga (vs UAPB, Feb 12, 2022)
Walks:	10	-	Furman (vs Saint Francis (PA), Feb 19, 2022)
Strikeouts:	14	-	Furman (vs Georgetown, Feb 19, 2022)
Sac hits:	3	-	Mercer (vs Jacksonville, Feb 20, 2022)
	3	-	Chattanooga (vs SIUE, Feb 18, 2022)
	3	-	UNCG (vs Loyola Chicago, Feb 25, 2022)
Sac flies:	3	-	Chattanooga (vs Purdue Fort Wayne, Feb 20, 2022)
Stolen bases:	11	-	ETSU (vs Morehead, Feb 19, 2022)
Caught stealing:	3	-	ETSU (vs Radford, Feb 11, 2022)
Hit by pitch:	3	-	(4 times)
Runners LOB:	12	-	Samford (vs Saint Louis, Feb 12, 2022)
	12	-	ETSU (vs Morehead, Feb 19, 2022)
	12	-	Furman (vs Saint Francis (PA), Feb 19, 2022)
Hit into DP:	2	-	Western Carolina (vs Col. of Charleston, Feb 27, 2022)
	2	-	Furman (vs North Dakota, Feb 11, 2022)

Fielding

Putouts:	30	-	UNCG (vs Maryland, Feb 12, 2022)
	30	-	Mercer (vs Loyola Chicago, Feb 11, 2022)
	30	-	UNCG (vs Oregon, Mar 03, 2022)
Assists:	16	-	UNCG (vs Maryland, Feb 12, 2022)
	16	-	Chattanooga (vs Northern Illinois, Feb 25, 2022)
Errors:	5	-	ETSU (vs Kennesaw State, Feb 25, 2022)
	5	-	Chattanooga (vs Tennessee Tech, Feb 19, 2022)
Passed balls:	3	-	Western Carolina (vs Winthrop, Feb 19, 2022)
DPs turned:	2	-	(6 times)

Pitching

Innings pitched:	10.0	-	UNCG (vs Maryland, Feb 12, 2022)
	10.0	-	UNCG (vs Oregon, Mar 03, 2022)
	10.0	-	Mercer (vs Loyola Chicago, Feb 11, 2022)
Strikeouts:	14	-	Western Carolina (vs Youngstown State, Feb 18, 2022)
Wild pitches:	5	-	Chattanooga (vs Eastern Kentucky, Feb 26, 2022)
Hit batters:	3	-	Mercer (vs Jacksonville, Feb 20, 2022)

The Automated ScoreBook
Game Highs for SoCon (Through games of March 3, 2022)
(All games)

GAME HIGHS (BOTH TEAMS)

Batting

At bats:	40	-	Loyola Chicago vs Mercer (Feb 11, 2022)
Runs scored:	17	-	UAPB vs Chattanooga (Feb 12, 2022)
Hits:	16	-	Mercer vs Jacksonville (Feb 20, 2022)
	16	-	UAPB vs Chattanooga (Feb 12, 2022)
RBI:	16	-	UAPB vs Chattanooga (Feb 12, 2022)
Doubles:	4	-	(6 times)
Triples:	2	-	Loyola Chicago vs Mercer (Feb 13, 2022)
	2	-	Towson vs UNCG (Feb 26, 2022)
Home runs:	3	-	(4 times)
Total bases:	31	-	UAPB vs Chattanooga (Feb 12, 2022)
Walks:	10	-	Saint Francis (PA) vs Furman (Feb 19, 2022)
Strikeouts:	14	-	Georgetown vs Furman (Feb 19, 2022)
Sac hits:	3	-	Mercer vs Jacksonville (Feb 20, 2022)
	3	-	SIUE vs Chattanooga (Feb 18, 2022)
	3	-	Loyola Chicago vs UNCG (Feb 25, 2022)
Sac flies:	3	-	Purdue Fort Wayne vs Chattanooga (Feb 20, 2022)
Stolen bases:	11	-	ETSU vs Morehead (Feb 19, 2022)
Caught stealing:	3	-	ETSU vs Radford (Feb 11, 2022)
Hit by pitch:	3	-	(4 times)
Runners LOB:	12	-	ETSU vs Morehead (Feb 19, 2022)
	12	-	Samford vs Saint Louis (Feb 12, 2022)
	12	-	Saint Francis (PA) vs Furman (Feb 19, 2022)
Hit into DP:	2	-	Western Carolina vs Col. of Charleston (Feb 27, 2022)
	2	-	North Dakota vs Furman (Feb 11, 2022)

Fielding

Putouts:	30	-	UNCG vs Maryland (Feb 12, 2022)
	30	-	Oregon vs UNCG (Mar 03, 2022)
	30	-	Loyola Chicago vs Mercer (Feb 11, 2022)
Assists:	16	-	UNCG vs Maryland (Feb 12, 2022)
	16	-	Northern Illinois vs Chattanooga (Feb 25, 2022)
Errors:	5	-	ETSU vs Kennesaw State (Feb 25, 2022)
	5	-	Tennessee Tech vs Chattanooga (Feb 19, 2022)
Passed balls:	3	-	Western Carolina vs Winthrop (Feb 19, 2022)
DPs turned:	2	-	Western Carolina vs Col. of Charleston (Feb 27, 2022)
	2	-	North Dakota vs Furman (Feb 11, 2022)

Pitching

Innings pitched:	10.0	-	UNCG vs Maryland (Feb 12, 2022)
	10.0	-	Oregon vs UNCG (Mar 03, 2022)
	10.0	-	Loyola Chicago vs Mercer (Feb 11, 2022)
Strikeouts:	14	-	Youngstown State vs Western Carolina (Feb 18, 2022)
Wild pitches:	5	-	Eastern Kentucky vs Chattanooga (Feb 26, 2022)
Hit batters:	3	-	Mercer vs Jacksonville (Feb 20, 2022)

The Automated ScoreBook
Game Highs for SoCon (Through games of March 3, 2022)
(All games)

INDIVIDUAL GAME HIGHS

Batting

At bats:	5	-	(16 times)
Runs scored:	4	-	R. Laudino, Mercer (vs Jacksonville, Feb 19, 2022)
Hits:	3	-	(26 times)
RBIs:	6	-	K. Helm, Mercer (vs Jacksonville, Feb 19, 2022)
Doubles:	2	-	(5 times)
Triples:	2	-	B. Batten, UNCG (vs Towson, Feb 26, 2022)
Home runs:	2	-	Rice, Western Carolina (vs Georgia State, Feb 16, 2022)
	2	-	Shurbutt, Samford (vs Kennesaw State, Feb 20, 2022)
Total bases:	9	-	Shurbutt, Samford (vs Kennesaw State, Feb 20, 2022)
Walks:	3	-	(6 times)
Strikeouts:	4	-	Morgan, Furman (vs Georgetown, Feb 19, 2022)
Sac hits:	2	-	A. Dorsett, Samford (vs Southern Miss, Feb 12, 2022)
	2	-	A. Collins, ETSU (vs Binghamton, Feb 13, 2022)
Sac flies:	1	-	(28 times)
Stolen bases:	3	-	K. Warren, ETSU (vs Morehead, Feb 19, 2022)
	3	-	Brewington, Western Carolina (vs Winthrop, Feb 11, 2022)
Caught stealing:	1	-	(22 times)
Hit by pitch:	2	-	Phillips, Chattanooga (vs Northwestern State, Feb 11, 2022)
	2	-	D. Cumbie, UNCG (vs Rider University, Feb 19, 2022)
	2	-	M. Brown, UNCG (vs Loyola Chicago, Feb 25, 2022)
Runners LOB:	6	-	Lykins, Furman (vs Saint Francis (PA), Feb 19, 2022)
	6	-	Briskin, Samford (vs Kennesaw State, Feb 20, 2022)

Fielding

Putouts:	13	-	Reele, Western Carolina (vs Youngstown State, Feb 18, 2022)
Assists:	6	-	Coltharp, Chattanooga (vs UT Martin, Feb 11, 2022)
	6	-	Snell, Chattanooga (vs SIUE, Feb 20, 2022)
	6	-	S. Muir, ETSU (vs Radford, Feb 12, 2022)
Errors:	2	-	(12 times)
Passed balls:	3	-	Reele, Western Carolina (vs Winthrop, Feb 19, 2022)

Pitching

Innings pitched:	10.0	-	M. Scott, UNCG (vs Maryland, Feb 12, 2022)
	10.0	-	H. Pitts, Mercer (vs Loyola Chicago, Feb 11, 2022)
Strikeouts:	14	-	Eilers, Western Carolina (vs Youngstown State, Feb 18, 2022)
Wild pitches:	3	-	R. Hickok, Mercer (vs Jacksonville, Feb 20, 2022)
	3	-	Alley, Chattanooga (vs Eastern Kentucky, Feb 26, 2022)
Hit batters:	2	-	(12 times)