

2020-21

SOUTHERN CONFERENCE MEN'S BASKETBALL



702 North Pine Street, Spartanburg, SC 29303 • 864-591-5100 • Fax: 864-591-3448

Phil Perry, Assistant Commissioner for Media Relations (MBK contact)

facebook.com/SouthernConference • twitter.com/SoConSports • instagram.com/SouthernConference

2020-21 SOUTHERN CONFERENCE BASKETBALL STANDINGS

| | Conference | | | | | Overall | | | | | |
|------------------|------------|-------|-----|-----|----|---------|-------|-----|-----|-----|----|
| | W-L | Pct. | H | A | ST | W-L | Pct. | H | A | N | ST |
| Wofford | 5-1 | 0.833 | 1-1 | 4-0 | W3 | 8-4 | 0.667 | 4-1 | 4-2 | 0-1 | W3 |
| Furman | 4-1 | 0.800 | 2-0 | 2-1 | L1 | 10-4 | 0.714 | 7-0 | 3-4 | 0-0 | L1 |
| ETSU | 4-1 | 0.800 | 2-0 | 2-1 | W2 | 8-5 | 0.615 | 5-1 | 2-2 | 1-2 | W2 |
| UNCG | 4-2 | 0.667 | 1-2 | 3-0 | W3 | 9-5 | 0.643 | 3-2 | 5-1 | 1-2 | W3 |
| VMI | 3-3 | 0.500 | 3-1 | 0-2 | W1 | 8-7 | 0.533 | 8-1 | 0-6 | 0-0 | W1 |
| Chattanooga | 3-4 | 0.429 | 2-2 | 1-2 | W1 | 12-4 | 0.750 | 6-2 | 6-2 | 0-0 | W1 |
| Mercer | 2-3 | 0.400 | 1-1 | 1-2 | W2 | 9-4 | 0.692 | 5-1 | 4-3 | 0-0 | W2 |
| Samford | 2-5 | 0.286 | 2-3 | 0-2 | L1 | 6-8 | 0.429 | 4-4 | 2-4 | 0-0 | L1 |
| The Citadel | 1-4 | 0.200 | 1-2 | 0-2 | L4 | 8-4 | 0.667 | 7-2 | 1-2 | 0-0 | L4 |
| Western Carolina | 0-4 | 0.000 | 0-1 | 0-3 | L4 | 7-6 | 0.538 | 3-1 | 3-4 | 1-1 | L4 |

NOTES

• Saturday's Southern Conference schedule is highlighted by the Ingles SoCon Game of the Week on select Nexstar affiliates, which features VMI at Mercer, and a meeting of 4-1 SoCon squads ETSU and Furman.

• VMI enters Saturday's contest riding the momentum of Wednesday's 74-73 win over Furman in which it got another standout performance from Greg Parham, the reigning SoCon Player of the Week presented by GEICO. Parham scored a game-high 24 points as the Keydets handed the Paladins their first league loss of the season. Freshman Trey Bonham's free throw with 3.1 seconds left proved the difference.

• Mercer has won two straight after opening league play 0-3. The Bears got their first SoCon win over Western Carolina on Jan. 16 and cruised to an 83-63 win over The Citadel on Wednesday. Mercer led for all but 36 seconds against the Bulldogs and got a career-high 23 points from Leon Ayers III.

• ETSU and Furman enter Saturday's bout a half-game back of first-place Wofford. The Bucs and Paladins will be meeting for the second time in an eight-day span, as Furman claimed a 78-66 win on ESPN+ on Jan. 16 behind a career-high 32 points from Mike Bothwell. The Bucs were playing without leading scorer Ledarius Brewer, who was sidelined because of COVID re-acclimation protocols.

• ETSU has won two straight since then, topping VMI and Western Carolina. The Bucs held the Catamounts 34 points below their seasonal scoring average in Wednesday's 59-48 win. Brewer scored 15 points to surpass 1,000 for his career.

• Entering its contest at VMI, Furman had been seeking its first 5-0 SoCon start since 1979-80, when it won 11 straight games to open league play en route to claiming both the SoCon regular-season and tournament titles.

• League-leading Wofford welcomes Western Carolina on Saturday. The Terriers have won three straight in SoCon action, most recently claiming a 77-59 win at Chattanooga on Jan. 16. Senior Storm Murphy has averaged 22.4 points per game over his last five contests.

• In its loss to ETSU on Wednesday, Western Carolina got 13 points from Xavier Cork, who has scored in double figures in all 13 games this season. With 266 career 3-pointers, senior Matt Halvorsen needs just two to enter the SoCon's career top 15.

• UNCG visits Chattanooga at noon on Saturday. Spartans coach Wes Miller earned his 100th career SoCon win on Monday when UNCG dined The Citadel, 87-73. With 173 overall wins, Miller ranks 15th in league history.

• Chattanooga, which has alternated wins and losses over its last six contests, topped Samford 70-64 on Wednesday. After giving up a season-high 40 first-half points to Mercer on Jan. 13, the Mocs surrendered just 22 each to Wofford and Samford in their next two games.

• Due to positive COVID tests and quarantine requirements within Samford's program, the Bulldogs' next four games have been postponed, including: vs. The Citadel (Saturday), at Mercer (Wednesday), at Western Carolina (Jan. 30) and at ETSU (Feb. 1).

UPCOMING SCHEDULE (ALL TIMES EASTERN)

Jan. 23 (Saturday)

- *UNCG at Chattanooga, 12 p.m. ESPN+
- *VMI at Mercer, 2 p.m. Nexstar/ESPN+
- *Furman at ETSU, 4 p.m. ESPN+
- *Western Carolina at Wofford, 4 p.m. ESPN+
- *The Citadel at Samford, p.p.d.

Ingles SoCon Game of the Week Nexstar affiliates

- WMUB (Macon)
- WWCW (Lynchburg/Roanoke)
- WYCW (Greenville/Spartanburg/Asheville)

Nexstar play-by-play: Pete Yanity
Nexstar analyst: Dean Keener

Jan. 25 (Monday)

- *UNCG at Furman, 7 p.m. ESPNU

ESPNU play-by-play: Brock Bowling
ESPNU analyst: Matt Doherty

SoCon 100TH ANNIVERSARY

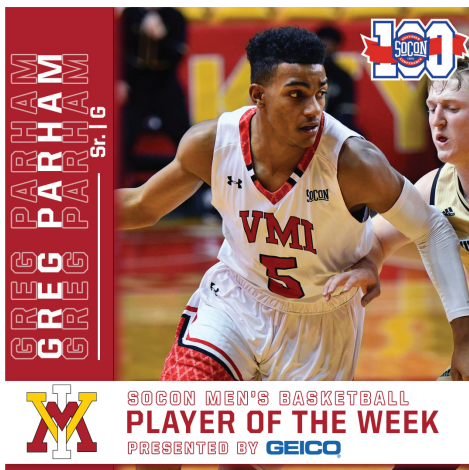
The SoCon is celebrating its 100th anniversary in 2021. The fifth-oldest NCAA Division I college athletic association, the SoCon contested the first-ever collegiate conference basketball tournament in 1921, tackled freshman eligibility in 1922, became the first conference to adopt the 3-point field goal in basketball in 1980 and developed women's championships in 1984.



SoCon PLAYER OF THE WEEK (1/19)

PRESENTED BY **GEICO**
Greg Parham, Sr., G
VMI

Parham averaged 27.7 points per game and shot nearly 67 percent from 3-point range over three contests. Parham, who also averaged 5.0 rebounds, 3.7 assists and 2.0 steals per game, opened his week with a season-high 29 points Wednesday in an 80-78 loss to Wofford. Parham was 10-for-15 from the floor, including a 7-for-8 effort from beyond the 3-point arc, adding two rebounds, three steals and three assists against just one turnover. Three days later, Parham scored 27 points and pulled down a career-best nine rebounds in a 110-103 win over military rival The Citadel, going 2-for-3 from 3-point range and 5-for-6 from the free-throw line. The senior from Richmond, Virginia, had another three assists and three more steals. Parham wrapped up his week with 27 points in a 92-81 loss at defending SoCon champion ETSU on Monday, going 5-for-10 from 3-point range with four rebounds and five assists with just one turnover.



SoCon RECORD BOOK

INDIVIDUAL

Coaching wins at a SoCon school

| | | |
|-----|-----|--|
| 1. | 447 | Bob McKillop, DAV (1992-14) |
| 2. | 299 | Mike Young, WOF (2002-19) |
| 3. | 243 | Mack McCarthy, UTC (1985-97) |
| | 243 | Burton Shipley, MD (1923-47) |
| 5. | 230 | Bill Reinhart, GW (1941-42; 1949-66) |
| 6. | 226 | Eddie Cameron, Duke (1928-42) |
| | 226 | Bobby Cremins, APP (1975-81); CofC (2006-12) |
| 8. | 223 | Lyles Alley, FUR (1945-49; 1950-66) |
| 9. | 213 | Les Robinson, CIT (1974-85); ETSU (1985-90) |
| 10. | 196 | Murray Greason, WF (1936-43; 44-53) |
| 11. | 194 | Norman Shepard, UNC (1923-24); DAV (1937-49) |
| 12. | 193 | Larry Hunter, WCU (2005-18) |
| 13. | 187 | Everett Case, NCSU (1946-53) |
| 14. | 176 | Lefty Driesell, DAV (1960-69) |
| 15. | 173 | Wes Miller, UNCG (2011-present) |
| 16. | 168 | Malcolm U. Pitt, RICH (1935-52) |
| 17. | 148 | Herman J. Stegeman, UGA (1921-31) |
| 18. | 147 | Lester Hooker Jr., RICH (1952-63) |
| 19. | 146 | Fred Schaus, WVU (1954-60) |
| 20. | 145 | Steve Cottrell, WCU (1977-87) |
| | 145 | John Shulman, UTC (2004-13) |
| 22. | 142 | Joe Williams, FUR (1970-78) |
| 23. | 141 | Tom Scott, UTC (1946-52); DAV (1955-60) |
| 24. | 139 | Ron Shumate, UTC (1972-79) |
| | 139 | Tom Apke, APP (1986-96) |

Coaching wins per season (min. two seasons) (entering 2020-21 season)

| Avg. Wins | Yrs. | | |
|-----------|-------------|-----------|-----------------------------------|
| 1. | 26.7 | 187 | 7 Everett Case, NCSU 1946-53 |
| 2. | 26.0 | 52 | 2 Ben Carnevale, UNC 1944-46 |
| | 26.0 | 130 | 5 Steve Forbes, ETSU 2015-20 |
| 4. | 24.3 | 146 | 6 Fred Schaus, WVU 1954-60 |
| | 24.3 | 73 | 3 Bob Richey, FUR 2017-pr. |
| 6. | 23.8 | 95 | 4 John Kresse, CofC 1998-02 |

Steals Career

| | | | |
|-----|------------|----------------------------|-----------------|
| 1. | 334 | Keith Jennings, ETSU | 1988-91 |
| 2. | 293 | D.J. Thompson, APP | 2003-06 |
| 3. | 285 | Brigham Waginger, WCU | 2006-10 |
| | 285 | Josh Sharkey, SAM | 2016-20 |
| 5. | 270 | Isaiah Miller, UNCG | 2017-pr. |
| 6. | 250 | Derek Rucker, DAV | 1985-88 |
| 7. | 247 | Tyson Patterson, APP | 1996-00 |
| 8. | 246 | Zakee Wadood, ETSU | 2001-02 |
| 9. | 240 | Jason Bell, VMI | 1995-98 |
| 10. | 236 | Ricky Hickman, UNCG | 2003-07 |
| | 236 | Rodney Peel, APP | 1988-92 |

TEAM Scoring Game

| | | | |
|----|------------|--------------------------------|-----------------|
| 1. | 154 | FUR vs. The Citadel | 1/8/55 |
| 2. | 149 | FUR vs. Newberry | 2/13/54 |
| 3. | 148 | CIT vs. Mid-Atlantic Christian | 11/12/18 |
| 4. | 146 | CIT vs. Johnson | 11/11/16 |
| 5. | 144 | CIT vs. Toccoa Falls | 12/7/16 |
| 6. | 141 | WCU vs. Toccoa Falls | 1/17/12 |
| 7. | 137 | CIT vs. Johnson | 11/14/18 |
| 8. | 133 | WCU vs. Toccoa Falls | 11/26/01 |
| | 133 | VMI vs. Mid-Atlantic Christian | 12/2/14 |
| | 133 | SAM vs. Belhaven | 12/21/20 |

Field-goal percentage Game

| Pct. | FG-FGA | |
|------|-------------|--|
| 1. | 77.4 | 24-31 UR vs. CIT 1975-76 |
| 2. | 72.3 | 34-47 UTC vs. APP 3/6/03 |
| 3. | 71.9 | 41-57 Elon vs. W&L 11/8/13 |
| 4. | 71.7 | 33-46 DAV vs. VMI 3/3/83 |
| 5. | 71.4 | 20-28 FUR vs. JMU 12/1/84 |
| 6. | 71.0 | 44-62 APP vs. Tenn. Wesleyan 12/30/99 |
| 7. | 70.3 | 45-64 WOF vs. Allen 11/15/16 |
| 8. | 70.0 | 42-60 FUR vs. S.C. State 12/21/20 |
| 9. | 69.8 | 37-53 VMI vs. Christendom 11/20/19 |
| 10. | 69.3 | 43-62 CIT vs. Indiana State 12/19/88 |

3-point field goals made Game

| | | | |
|----|-----------|---|----------|
| 1. | 24 | VMI vs. Furman | 2/12/15 |
| 2. | 23 | CIT vs. Mid-Atlantic Christian | 11/12/18 |
| | 23 | CIT vs. High Point | 11/27/18 |
| 4. | 22 | GSU vs. Chattanooga | 1/17/05 |
| | 22 | CIT vs. UNCG | 2/28/19 |
| | 22 | SAM vs. Belhaven 12/21/20 | |
| 7. | 21 | FUR vs. Virginia Intermont | 12/29/04 |
| | 21 | VMI vs. Johnson | 11/18/14 |
| | 21 | CIT vs. Ogelthorpe | 11/10/17 |
| | 21 | FUR vs. North Greenville | 11/15/18 |
| | 21 | VMI vs. Camp.-Harrodsburg 12/15/20 | |
| | 21 | FUR vs. S.C. State 12/21/20 | |

Rebounds Game

| | | | |
|----|-----------|--------------------------------------|----------|
| 1. | 78 | GWU vs. Georgetown | 1968-69 |
| 2. | 76 | DAV vs. VMI | 1/8/70 |
| 3. | 70 | VMI vs. Mid-Atlantic Christian | 12/2/14 |
| 4. | 68 | DAV vs. Emory | 11/9/07 |
| 5. | 67 | CIT vs. Clemson | 11/25/00 |
| 6. | 67 | CIT vs. Johnson | 11/13/16 |
| 7. | 65 | GSU vs. UC Davis | 11/12/06 |
| 8. | 64 | ETSU vs. Reinhardt | 12/3/18 |
| 9. | 63 | ETSU vs. UVa-Wise | 11/18/14 |
| | 63 | CIT vs. Mid-Atlantic Christian | 11/12/18 |
| | 63 | UNCG at N.C. A&T 12/22/20 | |

Assists Game

| | | | |
|----|-----------|----------------------------------|----------|
| 1. | 42 | CIT vs. Mid-Atlantic Christian | 11/19/15 |
| 2. | 39 | DAV vs. Warren Wilson | 12/9/91 |
| 3. | 38 | MAR vs. South Carolina | 12/1/80 |
| 4. | 37 | CIT vs. Mid-Atlantic Christian | 11/12/18 |
| 5. | 36 | UTC vs. Emmanuel | 11/29/03 |
| | 36 | SAM vs. Belhaven 12/21/20 | |
| 7. | 35 | DAV vs. Mount St. Mary | 12/15/06 |
| | 35 | UTC vs. Tennessee Wesleyan | 11/26/03 |
| 9. | 34 | CIT vs. Johnson | 11/13/16 |
| | 34 | WOF vs. UVa-Wise | 12/6/16 |

ACTIVE SoCON CAREER LEADERS

Points scored (SoCon career rank)

| | |
|-------|---|
| 1,656 | Isaiah Miller, UNCG, Sr. |
| 1,142 | David Jean-Baptiste, Chattanooga, R-Sr. |
| 1,136 | Matt Halvorsen, Western Carolina, Sr. |
| 1,134 | Clay Mounce, Furman, Sr. |
| 1,122 | Storm Murphy, Wofford, Sr. |

Points scored per game (min. 800 points)

| | |
|-------|---------------------------------------|
| 14.28 | Isaiah Miller, UNCG, Sr. |
| 12.06 | Noah Gurley, Furman, Jr. |
| 11.53 | Ross Cummings, Mercer, R-Sr. |
| 11.08 | Kaiden Rice, The Citadel, Sr. |
| 10.52 | Matt Halvorsen, Western Carolina, Sr. |

Field-goal percentage (min. 240 made)

| | |
|------|----------------------------|
| .519 | Clay Mounce, Furman, Sr. |
| .497 | Mike Bothwell, Furman, Jr. |
| .490 | Noah Gurley, Furman, Jr. |
| .477 | Isaiah Miller, UNCG, Sr. |
| .473 | Storm Murphy, Wofford, Sr. |

3-point field goals made

| | |
|-----|---------------------------------------|
| 266 | Matt Halvorsen, Western Carolina, Sr. |
| 240 | Kaiden Rice, The Citadel, Sr. |
| 213 | Ross Cummings, Mercer, R-Sr. |
| 192 | Storm Murphy, Wofford, Sr. |
| 174 | Alex Hunter, Furman, Sr. |

3-point field-goal percentage (min. 120 made)

| | |
|------|----------------------------------|
| .424 | Storm Murphy, Wofford, Sr. |
| .420 | Triston Chambers, Samford, R-Sr. |
| .411 | Ross Cummings, Mercer, R-Sr. |
| .397 | Kamdyn Curfman, VMI, So. |
| .382 | Clay Mounce, Furman, Sr. |

Free-throw percentage (min. 110 made)

| | |
|------|---------------------------------------|
| .860 | Storm Murphy, Wofford, Sr. |
| .853 | Preston Parks, Samford, Gr. |
| .846 | Matt Halvorsen, Western Carolina, Sr. |
| .837 | Stefan Kenic, Chattanooga, Sr. |
| .826 | Myron Gordon, Samford, R-Sr. |

Rebounds

| | |
|-----|--------------------------|
| 542 | Clay Mounce, Furman, Sr. |
| 526 | Isaiah Miller, UNCG, Sr. |
| 408 | Myles Lewis, VMI, Sr. |
| 381 | Jake Stephens, VMI, Jr. |
| 332 | Noah Gurley, Furman, Jr. |

Rebounds per game (min. 280 rebounds)

| | |
|------|----------------------------------|
| 6.83 | Jalen Dupree, Samford, R-Sr. |
| 4.97 | Clay Mounce, Furman, Sr. |
| 4.76 | Jake Stephens, VMI, Jr. |
| 4.71 | Hayden Brown, The Citadel, R-Jr. |
| 4.53 | Isaiah Miller, UNCG, Sr. |

Blocked shots

| | |
|----|------------------------------|
| 80 | Jake Stephens, VMI, Jr. |
| 74 | Clay Mounce, Furman, Sr. |
| 62 | Noah Gurley, Furman, Jr. |
| 59 | Maciej Bender, Mercer, R-Sr. |
| 56 | Jalen Slawson, Furman, Jr. |

Steals

| | | |
|-----|---|-----|
| 270 | Isaiah Miller, UNCG, Sr. | (5) |
| 109 | Clay Mounce, Furman, Sr. | |
| 97 | David Jean-Baptiste, Chattanooga, R-Sr. | |
| 96 | Alex Hunter, Furman, Sr. | |
| 92 | Storm Murphy, Wofford, Sr. | |

Assists

| | |
|-----|---|
| 425 | Storm Murphy, Wofford, Sr. |
| 312 | Alex Hunter, Furman, Sr. |
| 277 | Isaiah Miller, UNCG, Sr. |
| 267 | Greg Parham, VMI, Sr. |
| 237 | Mason Faulkner, Western Carolina, R-Sr. |

Assists per game (min. 150 assists)

| | |
|------|---|
| 5.64 | Mason Faulkner, Western Carolina, R-Sr. |
| 3.73 | Storm Murphy, Wofford, Sr. |
| 3.16 | Preston Parks, Samford, Gr. |
| 2.79 | Alex Hunter, Furman, Sr. |
| 2.47 | Greg Parham, VMI, Sr. |

SoCON COACHING RECORDS

| Coach, school | Career (yrs.) | School (yrs.) | SoCon (yrs.) |
|--------------------------------|----------------|---------------|---------------|
| Duggar Baucom, The Citadel | 247-288 (18th) | 59-110 (6th) | 24-90 (7th) |
| Jason Shay, ETSU | 8-5 (1st) | Same | 4-1 (1st) |
| Bob Richey, Furman | 83-30 (4th) | Same | 45-14 (4th) |
| Greg Gary, Mercer | 42-63 (4th) | 26-19 (2nd) | 13-10 (2nd) |
| Wes Miller, UNCG | 173-131 (10th) | Same | 100-63 (10th) |
| Bucky McMillan, Samford | 6-8 (1st) | Same | 2-5 (1st) |
| Lamont Paris, Chattanooga | 54-60 (4th) | Same | 23-38 (4th) |
| Dan Earl, VMI | 52-118 (6th) | Same | 21-75 (6th) |
| Mark Prosser, Western Carolina | 38-66 (4th) | 33-43 (3rd) | 14-26 (3rd) |
| Jay McAuley, Wofford | 27-20 (2nd) | Same | 13-11 (2nd) |

American Athletic (0-2)

12/9 Cincinnati 78, Furman 73
 12/12 USF 58, Wofford 56
 (Holiday Hoopsgiving; Atlanta, Ga.)

ASUN (3-0)

12/9 Chattanooga 77, Bellarmine 68
 12/19 Samford 65, Kennesaw State 63
 12/22 Mercer 81, Kennesaw State 71

Atlantic 10 (0-4)

12/2 Duquesne 81, UNCG 68
 (Wade Houston Tipoff Classic; Louisville, Ky.)
 12/7 #19 Richmond 77, Wofford 72
 12/15 VCU 93, Western Carolina 68
 12/21 George Mason 68, VMI 66

Atlantic Coast (1-1)

11/27 Mercer 83, Georgia Tech 73
 12/3 #16 Virginia Tech 64, VMI 57

Big South (9-3)

11/28 Furman 91, USC Upstate 63
 (Furman Multi Team Event)
 11/28 Western Carolina 83, UNC Asheville 81 (OT)
 (Mako Medical Asheville Classic)
 12/1 VMi 84, Longwood 71
 12/1 Winthrop 75, UNCG 67
 (Louisville, Ky.)
 12/13 VMi 79, Hampton 64
 (Keydet Classic)
 12/15 ETSU 65, Gardner-Webb 60
 12/15 UNCG 65, USC Upstate 57
 12/16 Chattanooga 69, UNC Asheville 66
 12/18 Gardner-Webb 88, VMI 77
 12/19 The Citadel 91, Longwood 89
 12/19 Winthrop 81, Furman 71
 12/22 The Citadel 94, Presbyterian 82

Big Ten (0-1)

11/28 Penn State 86, VMI 65

Colonial (4-0)

11/25 Western Carolina 98, UNCW 76
 (Asheville, N.C.)
 12/5 Furman 81, College of Charleston 57
 12/18 Western Carolina 76, Col. of Charleston 70 (OT)
 12/19 UNCG 71, Elon 64

Conference USA (3-1)

11/27 ETSU 57, Middle Tennessee 43
 (Gulf Coast Showcase; Estero, Fla.)
 12/7 Chattanooga 80, Middle Tennessee 70
 12/12 UAB 65, ETSU 61
 12/19 Chattanooga 69, UAB 66

Horizon (1-0)

12/5 Chattanooga 79, Northern Kentucky 72

Mid-Eastern Athletic (5-1)

12/3 The Citadel 78, North Carolina A&T 70
 12/10 Coppin State 85, UNCG 80
 12/12 Western Carolina 104, North Carolina A&T 98 (OT)
 12/13 UNCG 64, Norfolk State 47
 12/21 Furman 118, South Carolina State 52
 12/22 UNCG 86, North Carolina A&T 65

Non-Division I (23-0)

11/25 Mercer 79, North Georgia 48

11/25 Chattanooga 99, Lander 63
 11/25 The Citadel 89, Piedmont 64
 11/25 Furman 95, Tusculum 62
 11/25 Wofford 88, Toccoa Falls 49
 11/25 VMi 90, St. Andrews 63
 11/28 Wofford 111, Carver 37
 11/30 Western Carolina 96, Piedmont 58
 12/1 Samford 97, Covenant 73
 12/2 Furman 89, Southern Wesleyan 49
 (Furman Multi Team Event)
 12/3 Western Carolina 91, Newberry 84
 12/5 Mercer 88, Columbia International 62
 12/5 The Citadel 100, Toccoa Falls 58
 12/6 Mercer 96, Southern Wesleyan 85
 12/7 The Citadel 96, Columbia International 57
 12/8 VMi 100, Greensboro College 65
 12/9 The Citadel 102, Carver 51
 12/11 North Carolina Wesleyan at UNCG, ppd.
 12/12 Furman 86, Flagler 61
 12/12 Chattanooga 81, North Georgia 63
 12/15 VMi 106, Campbellsville Harrodsburg 72
 12/17 ETSU 96, Columbia International 54
 12/19 ETSU 62, Lee 53
 12/21 Samford 133, Belhaven 84

Ohio Valley (4-1)

11/26 Austin Peay 67, ETSU 66
 (Gulf Coast Showcase; Estero, Fla.)
 11/30 Chattanooga 62, Tennessee Tech 54
 12/5 Samford 96, Belmont 83
 12/6 Western Carolina 76, Tennessee Tech 75 (OT)
 12/22 Chattanooga 66, Tennessee State 63

Southeastern (0-4)

12/12 Georgia 79, Samford 75
 12/15 Alabama 83, Furman 80
 12/21 Texas A&M 70, Wofford 52
 12/22 Alabama 85, ETSU 69

Southland (0-1)

11/25 Abilene Christian 70, ETSU 47
 (Gulf Coast Showcase; Estero, Fla.)

Southwestern Athletic (0-1)

11/29 Alabama A&M 78, Samford 76

Sun Belt (4-3)

11/27 Troy 66, Western Carolina 64
 (Mako Medical Asheville Classic; Asheville, N.C.)
 11/27 UNCG 77, Little Rock 70
 (Wade Houston Tipoff Classic; Louisville, Ky.)
 11/30 Mercer 86, Georgia State 69
 12/13 Mercer 77, Georgia Southern 75
 12/15 Wofford 88, Coastal Carolina 77
 12/16 Georgia State 88, Mercer 81
 12/16 Troy 79, Samford 71

Schedule subject to change

| | |
|----------------------------|--------------|
| American Athletic..... | 0-2 |
| ASUN..... | 3-0 |
| Atlantic 10..... | 0-4 |
| Atlantic Coast..... | 1-1 |
| Big South..... | 9-3 |
| Big Ten..... | 0-1 |
| Colonial..... | 4-0 |
| Conference USA..... | 3-1 |
| Horizon..... | 1-0 |
| Mid-Eastern Athletic..... | 5-1 |
| Non-Division I..... | 23-0 |
| Ohio Valley..... | 4-1 |
| Southeastern..... | 0-4 |
| Southland..... | 0-1 |
| Southwestern Athletic..... | 0-1 |
| Sun Belt..... | 4-3 |
| Total..... | 57-23 |
| Home..... | 37-2 |
| Away..... | 17-15 |
| Neutral..... | 3-6 |
| vs. Top 25..... | 0-1 |

SPECIALTY STATS LEADERS

| 30-point games | Ovr. | SoCon |
|--------------------------|------|-------|
| Hayden Brown, CIT..... | 2 | 1 |
| Mike Bothwell, FUR..... | 1 | 1 |
| Isaiah Miller, UNCG..... | 1 | 1 |
| Jake Stephens, VMI..... | 1 | 1 |

| 20-point games | Ovr. | SoCon |
|-------------------------------|------|-------|
| Hayden Brown, CIT..... | 7 | 2 |
| Greg Parham, VMI..... | 7 | 5 |
| Kaiden Rice, CIT..... | 6 | 3 |
| Mike Bothwell, FUR..... | 6 | 2 |
| Clay Mounce, FUR..... | 6 | 2 |
| Isaiah Miller, UNCG..... | 6 | 3 |
| Storm Murphy, WOF..... | 6 | 4 |
| Ross Cummings, MER..... | 5 | 3 |
| David Jean-Baptiste, UTC..... | 5 | 3 |
| Mason Faulkner, WCU..... | 5 | 2 |
| Matt Halvorsen, WCU..... | 4 | 0 |
| Ledarius Brewer, ETSU..... | 3 | 2 |
| Maciej Bender, MER..... | 3 | 1 |
| Jake Stephens, VMI..... | 3 | 2 |
| Noah Gurley, FUR..... | 2 | 1 |
| Christian Guess, SAM..... | 2 | 1 |
| Myron Gordon, SAM..... | 2 | 0 |
| Stefan Kenic, UTC..... | 2 | 1 |
| Malachi Smith, UTC..... | 2 | 1 |
| Xavier Cork, WCU..... | 2 | 0 |
| Fletcher Abee, CIT..... | 1 | 1 |
| Ty Brewer, ETSU..... | 1 | 1 |
| Damari Monsanto, ETSU..... | 1 | 0 |
| Alex Hunter, FUR..... | 1 | 0 |
| Neftali Alvarez, MER..... | 1 | 1 |
| Leon Ayers III, MER..... | 1 | 1 |
| Keyshaun Langley, UNCG..... | 1 | 0 |
| Triston Chambers, SAM..... | 1 | 0 |
| Logan Dye, SAM..... | 1 | 0 |
| A.J. Staton-McCray, SAM..... | 1 | 0 |
| Trey Bonham, VMI..... | 1 | 1 |
| Sean Conway, VMI..... | 1 | 1 |
| Travion McCray, WCU..... | 1 | 0 |
| Sin'Cere McMahan, WCU..... | 1 | 0 |
| Tray Hollowell, WOF..... | 1 | 0 |
| Messiah Jones, WOF..... | 1 | 0 |
| Morgan Safford, WOF..... | 1 | 0 |

| 20-rebound games | Ovr. | SoCon |
|------------------------|------|-------|
| Hayden Brown, CIT..... | 1 | 0 |

| 15-rebound games | Ovr. | SoCon |
|------------------------|------|-------|
| Hayden Brown, CIT..... | 2 | 0 |
| Felipe Haase, MER..... | 2 | 0 |

| 10-rebound games | Ovr. | SoCon |
|-------------------------------|------|-------|
| Malachi Smith, UTC..... | 9 | 2 |
| Hayden Brown, CIT..... | 6 | 2 |
| Felipe Haase, MER..... | 4 | 0 |
| Christian Guess, SAM..... | 4 | 1 |
| Myles Lewis, VMI..... | 4 | 0 |
| Jake Stephens, VMI..... | 4 | 2 |
| Jalen Slawson, FUR..... | 3 | 1 |
| Silas Adheke, ETSU..... | 2 | 1 |
| Damari Monsanto, ETSU..... | 2 | 2 |
| Mohammed Abdulsala, UNCG..... | 2 | 1 |
| Kaleb Hunter, UNCG..... | 2 | 0 |
| Isaiah Miller, UNCG..... | 2 | 2 |
| Xavier Cork, WCU..... | 2 | 0 |
| Tyler Harris, WCU..... | 2 | 1 |
| Messiah Jones, WOF..... | 2 | 0 |
| Stephen Clark, CIT..... | 1 | 0 |
| Ledarius Brewer, ETSU..... | 1 | 1 |

| | | |
|--------------------------|---|---|
| Clay Mounce, FUR..... | 1 | 0 |
| Myron Gordon, SAM..... | 1 | 0 |
| A.J. Caldwell, UTC..... | 1 | 1 |
| Sean Conway, VMI..... | 1 | 1 |
| Cory Hightower, WCU..... | 1 | 1 |
| Nick Pringle, WOF..... | 1 | 0 |

| 10-assist games | Ovr. | SoCon |
|------------------------|------|-------|
| Tyler Moffe, CIT..... | 1 | 0 |
| Storm Murphy, WOF..... | 1 | 1 |

| 5-block games | Ovr. | SoCon |
|-------------------------|------|-------|
| Stephen Clark, CIT..... | 3 | 2 |
| Hayden Koval, UNCG..... | 2 | 0 |
| Jake Stephens, VMI..... | 1 | 1 |
| Xavier Cork, WCU..... | 1 | 0 |

| Double-doubles | Ovr. | SoCon |
|-------------------------------|------|-------|
| Malachi Smith, UTC..... | 8 | 1 |
| Hayden Brown, CIT..... | 6 | 2 |
| Christian Guess, SAM..... | 4 | 1 |
| Jake Stephens, VMI..... | 4 | 2 |
| Jalen Slawson, FUR..... | 3 | 1 |
| Myles Lewis, VMI..... | 3 | 0 |
| Felipe Haase, MER..... | 2 | 0 |
| Isaiah Miller, UNCG..... | 2 | 2 |
| Xavier Cork, WCU..... | 2 | 0 |
| Messiah Jones, WOF..... | 2 | 0 |
| Stephen Clark, CIT..... | 1 | 0 |
| Tyler Moffe, CIT..... | 1 | 0 |
| Silas Adheke, ETSU..... | 1 | 0 |
| Ledarius Brewer, ETSU..... | 1 | 1 |
| Damari Monsanto, ETSU..... | 1 | 1 |
| Clay Mounce, FUR..... | 1 | 0 |
| Mohammed Abdulsala, UNCG..... | 1 | 1 |
| Kaleb Hunter, UNCG..... | 1 | 0 |
| Myron Gordon, SAM..... | 1 | 0 |
| A.J. Caldwell, UTC..... | 1 | 1 |
| Sean Conway, VMI..... | 1 | 1 |
| Cory Hightower, WCU..... | 1 | 1 |
| Storm Murphy, WOF..... | 1 | 1 |
| Nick Pringle, WOF..... | 1 | 0 |

| 30/20 games | Ovr. | SoCon |
|------------------------|------|-------|
| Hayden Brown, CIT..... | 1 | 0 |

| 30/10 games | Ovr. | SoCon |
|--------------------------|------|-------|
| Hayden Brown, CIT..... | 2 | 1 |
| Isaiah Miller, UNCG..... | 1 | 1 |
| Jake Stephens, VMI..... | 1 | 1 |

| 20/15 games | Ovr. | SoCon |
|------------------------|------|-------|
| Hayden Brown, CIT..... | 2 | 0 |

| 20/10 games | Ovr. | SoCon |
|---------------------------|------|-------|
| Hayden Brown, CIT..... | 5 | 1 |
| Clay Mounce, FUR..... | 1 | 0 |
| Isaiah Miller, UNCG..... | 1 | 1 |
| Christian Guess, SAM..... | 1 | 0 |
| Malachi Smith, UTC..... | 1 | 0 |
| Sean Conway, VMI..... | 1 | 1 |
| Jake Stephens, VMI..... | 1 | 1 |
| Xavier Cork, WCU..... | 1 | 0 |
| Messiah Jones, WOF..... | 1 | 0 |
| Storm Murphy, WOF..... | 1 | 1 |

3-POINTER STREAKS

Eight SoCon student-athletes have streaks of at least 10 consecutive games with a made 3-pointer, led by the 18-game streak by VMI's Greg Parham. The Citadel's Fletcher Abee saw his 29-game streak end on Jan. 18.

Consecutive games with a 3-pointer

| Player, school | '20-21 | '19-20 | Total |
|-------------------------------|--------|--------|-------|
| Greg Parham, VMI, Sr. | 15 | 3 | 18 |
| David Jean-Baptiste, UTC, Sr. | 12 | 3 | 15 |
| Matt Halvorsen, WCU, Sr. | 13 | 2 | 15 |
| Malachi Smith, UTC, R-So. | 13 | x | 13 |
| Kaiden Rice, CIT, Sr. | 12 | x | 12 |
| Kamdyn Curfman, VMI, So. | 12 | x | 12 |
| Ledarius Brewer, ETSU, R-Jr. | 11 | x | 11 |
| Sean Conway, VMI, So. | 11 | x | 11 |

Preseason predictions

UNC Greensboro is the coaches' preseason favorite and Furman is the media's pick to win the 2020-21 SoCon men's basketball title in polling of the league's 10 men's basketball coaches and media. UNCG senior guard Isaiah Miller, the reigning SoCon Player of the Year and two-time defending SoCon Defensive Player of the Year, is the coaches' preseason player of the year selection for the second straight season.

Preseason Player of the Year

Isaiah Miller, Sr., G, UNCG

Preseason All-Southern Conference Team

Ledarius Brewer, R-Jr., G, ETSU
 Ty Brewer, Jr., F, ETSU
 Mike Bothwell, Jr., G, Furman
 Noah Gurley, Jr., F, Furman
 Clay Mounce, Sr., F, Furman
 Ross Cummings, R-Sr., G, Mercer
 Jeff Gary, R-Jr., G, Mercer
 Isaiah Miller, Sr., G, UNCG
 David Jean-Baptiste, R-Sr., G, Chattanooga
 Mason Faulkner, R-Sr., G, Western Carolina
 Storm Murphy, Sr., G, Wofford

Coaches poll

| Team (1st) | Total | Media poll Team (1st) | Total |
|---------------------|-------|-----------------------|-------|
| 1. UNCG (4) | 76 | 1. Furman (16) | 278 |
| 2. Furman (5) | 74 | 2. UNCG (9) | 274 |
| 3. ETSU (1) | 63 | 3. ETSU (4) | 211 |
| 4. Mercer | 56 | 4. Mercer (1) | 190 |
| 5. Wofford | 47 | 5. Wofford | 184 |
| 6. Western Carolina | 44 | 6. Western Carolina | 175 |
| 7. Chattanooga | 38 | 7. Chattanooga | 150 |
| 8. Samford | 23 | 8. Samford | 79 |
| 9. VMI | 15 | 9. VMI | 61 |
| 10. The Citadel | 14 | 10. The Citadel | 48 |

COLLEGEINSIDER.COM MID-MAJOR TOP 25

| Team | PS | N30 | D7 | D14 | D21 | D28 | J4 | J11 | J18 |
|--------------------|-----------|-----------|-----------|-----------|-----------|-----------|-----------|-----------|----------|
| Gonzaga (31) | 1 | 1 | 1 | 1 | 1 | 1 | 1 | 1 | 1 |
| Winthrop | 9 | 14 | 6 | 5 | 2 | 2 | 2 | 2 | 2 |
| Drake | - | 22 | 18 | 9 | 7 | 4 | 3 | 3 | 3 |
| Furman | 6 | 2 | 2 | 3 | 5 | 5 | 4 | 4 | 4 |
| Belmont | 13 | 5 | 17 | 12 | 12 | 12 | 6 | 5 | 5 |
| BYU | 7 | 3 | 4 | 6 | 6 | 6 | 5 | 6 | 6 |
| Georgia State | 11 | 6 | 12 | 10 | 4 | 3 | 9 | 9 | 7 |
| Loyola Chicago | 3 | 4 | 3 | 2 | 8 | 8 | 8 | 15 | 8 |
| Liberty | - | 15 | 8 | 8 | 9 | 9 | 10 | 7 | 9 |
| South Dakota State | 5 | 13 | 7 | 11 | 11 | 14 | 11 | 10 | 10 |
| Missouri State | - | - | - | - | - | 19 | 20 | 12 | 11 |
| Abilene Christian | - | 24 | 22 | 24 | 18 | 18 | 13 | 13 | 12 |
| Toledo | - | - | - | - | 23 | 17 | 12 | 11 | 13 |
| Eastern Kentucky | - | - | - | 21 | - | - | 25 | 18 | 14 |
| Bowling Green | 18 | 19 | 15 | 22 | 24 | 23 | 14 | 14 | 15 |
| Saint Mary's | 15 | 7 | 5 | 4 | 3 | 7 | 7 | 8 | 16 |
| Southern Utah | - | - | - | - | - | 24 | 17 | 16 | 17 |
| Wright State | 20 | 25 | - | 18 | 17 | 15 | 16 | 17 | 18 |
| Sam Houston | - | - | - | - | - | - | - | - | 19 |
| Southern Illinois | - | - | - | 17 | 14 | 10 | 15 | 20 | 20 |
| Texas State | - | - | - | - | - | - | - | - | 21 |
| Siena | 21 | 23 | 25 | - | - | - | - | - | 22 |
| Coastal Carolina | - | - | - | - | - | - | - | 22 | 23 |
| Navy | - | - | - | - | - | - | - | - | 24 |
| Louisiana | - | - | - | - | 22 | 22 | 23 | 24 | 25 |
| Little Rock | 4 | 8 | 14 | 13 | 13 | - | 18 | 19 | - |
| Mercer | - | - | 11 | 7 | 10 | 11 | 21 | 21 | - |
| Chattanooga | - | - | - | 25 | 16 | 13 | 22 | 23 | - |
| Bryant | - | - | - | - | - | - | - | 25 | - |
| Bradley | 16 | 18 | - | - | 20 | 20 | 19 | - | - |
| San Francisco | 24 | 21 | 13 | 14 | 21 | 21 | 24 | - | - |
| New Mexico State | 19 | 20 | 20 | 15 | 15 | 16 | - | - | - |
| UMBC | - | - | - | - | - | 25 | - | - | - |
| Murray State | 10 | 10 | 16 | 19 | 19 | - | - | - | - |
| Santa Clara | - | - | - | - | 25 | - | - | - | - |
| South Alabama | - | - | - | 16 | - | - | - | - | - |
| Austin Peay | 8 | 11 | 10 | 20 | - | - | - | - | - |
| Ohio | - | - | 19 | 23 | - | - | - | - | - |
| Northern Iowa | 2 | 9 | 9 | - | - | - | - | - | - |
| UNCG | 12 | 12 | 21 | - | - | - | - | - | - |
| Vermont | 17 | 17 | 23 | - | - | - | - | - | - |
| Eastern Washington | 14 | 16 | 24 | - | - | - | - | - | - |
| Boston University | 22 | - | - | - | - | - | - | - | - |
| UC Irvine | 23 | - | - | - | - | - | - | - | - |
| UCSB | 25 | - | - | - | - | - | - | - | - |

SoCon PLAYERS OF THE WEEK

PRESENTED BY **GEICO**

| | |
|---------|--------------------------------------|
| Dec. 1 | Neftali Alvarez, R-So., G, Mercer |
| Dec. 8 | Myron Gordon, R-Sr., G, Samford |
| Dec. 15 | Myron Gordon, R-Sr., G, Samford |
| Dec. 22 | Malachi Smith, R-So., G, Chattanooga |
| Jan. 5 | Mike Bothwell, Jr., G, Furman |
| Jan. 12 | Hayden Brown, R-Jr., F, The Citadel |
| Jan. 19 | Greg Parham, Sr., G, VMI |
| Jan. 26 | |
| Feb. 2 | |
| Feb. 9 | |
| Feb. 16 | |
| Feb. 23 | |
| March 1 | |

SoCon PLAYERS OF THE MONTH

| | |
|----------|--------------------------------------|
| December | Malachi Smith, R-So., G, Chattanooga |
| January | |
| February | |

SoCon STUDENT-ATHLETE OF THE WEEK

| | |
|--------|---------------------------------|
| Jan. 6 | Ross Cummings, R-Sr., G, Mercer |
|--------|---------------------------------|

NATIONAL HONORS

Lou Henson Award watch list (top mid-major player)

Noah Gurley, Furman, Jr.
Clay Mounce, Furman, Sr.
Isaiah Miller, UNCG, Sr.
Mason Faulkner, Western Carolina, R-Sr.

Lute Olson Award watch list (top DI player)

Isaiah Miller, UNCG, Sr.

SoCon 20-WIN SUCCESS


• The SoCon boasted four 20-game winners last season in ETSU, Furman, UNCG and Chattanooga. The SoCon has had four teams with 20 wins for a league-record four straight seasons, and prior to the recent run, the league only had two other seasons in which four teams reached the plateau – 1952-53 (Furman, NC State, Richmond and Wake Forest) and 2009-10 (Appalachian State, College of Charleston, Western Carolina and Wofford).

• ETSU has reached the milestone in a school-record five straight seasons, a streak that is tied for the fifth-longest in SoCon history. Furman and UNCG have both turned in four straight 20-win seasons, school records for both squads and tied for seventh in SoCon history.

Consecutive 20-win seasons, SoCon history

| School | No. | From | To |
|-----------------------|----------|----------------|----------------|
| West Virginia | 8 | 1955-56 | 1962-63 |
| Chattanooga | 8 | 1980-81 | 1987-88 |
| NC State | 7 | 1946-47 | 1953-54 |
| College of Charleston | 6 | 1998-99 | 2003-04 |
| Davidson | 5 | 2004-05 | 2008-09 |
| ETSU | 5 | 2015-16 | present |
| Davidson | 4 | 1962-63 | 1965-66 |
| ETSU | 4 | 1988-89 | 1991-92 |
| Furman | 4 | 2016-17 | present |
| UNCG | 4 | 2016-17 | present |

• That level of collective success is unprecedented in league history. Since the SoCon's first season in 1921-22, there had never been an instance of the same three teams reaching the 20-win mark in consecutive seasons until ETSU, Furman and UNCG did so in 2016-17 and again 2017-18; now, they've run that streak to a collective four straight seasons.



The Citadel
(8-4, 1-4 SoCon)

| | | |
|------|---|------------|
| N25 | PIEDMONT (ESPN+) | W, 89-64 |
| D3 | NORTH CAROLINA A&T (ESPN+) | W, 78-70 |
| D5 | TOCCOA FALLS (ESPN+) | W, 100-58 |
| D7 | COLUMBIA INTERNATIONAL (ESPN+) | W, 96-57 |
| D9 | CARVER (ESPN+) | W, 102-51 |
| D19 | at Longwood (ESPN+) | W, 91-89 |
| D22 | PRESBYTERIAN (ESPN+) | W, 94-82 |
| D30 | *UNCG (ESPN+) | ppd. |
| J2 | *at Western Carolina (ESPN+) | ppd. |
| J6 | *at Mercer (ESPN+) | ppd. |
| J9 | *CHATTANOOGA (Nexstar/ESPN+) | W, 92-87 |
| J13 | *FURMAN (ESPN+) | L, 88-94 |
| J16 | *at VMI (ESPN+) | L, 103-110 |
| J18 | *at UNCG (ESPN+) | L, 73-87 |
| J20 | *MERCER (ESPN+) | L, 63-83 |
| J23 | *at Samford (ESPN+) | ppd. |
| J27 | *WOFFORD (ESPN+) | 7 p.m. |
| J30 | *at ETSU (ESPN+) | 4 p.m. |
| F1 | *at Western Carolina (ESPN+) | 12 p.m. |
| F3 | *UNCG (ESPN+) | TBA |
| F6 | *WESTERN CAROLINA (ESPN+) | 1 p.m. |
| F10 | *ETSU (ESPN+) | 7 p.m. |
| F13 | *at Chattanooga (ESPN+) | 12 p.m. |
| F17 | *at Wofford (ESPN+) | 7 p.m. |
| F20 | *VMI (ESPN+) | 1 p.m. |
| F22 | *at Mercer (ESPN+) | TBA |
| F24 | *at Furman (ESPN+) | 7 p.m. |
| F27 | *SAMFORD (ESPN+) | 1 p.m. |
| M5-8 | at SoCon Championship (Asheville, N.C.) | |



ETSU
(8-5, 4-1 SoCon)

| | | |
|------|---|----------|
| N25 | vs. Abilene Christian^ (FloHoops) | L, 47-70 |
| N26 | vs. Austin Peay^ (FloHoops) | L, 66-67 |
| N27 | vs. Middle Tennessee^ (FloHoops) | W, 57-43 |
| D12 | UAB (ESPN+) | L, 61-65 |
| D15 | GARDNER-WEBB (ESPN+) | W, 65-60 |
| D17 | COLUMBIA INTERNATIONAL (ESPN+) | W, 96-54 |
| D19 | LEE (ESPN+) | W, 62-53 |
| D22 | at Alabama (SEC Network+) | L, 69-85 |
| D30 | *WESTERN CAROLINA (ESPN+) | W, 86-78 |
| J2 | *at UNCG (Nexstar/ESPN+) | W, 71-61 |
| J6 | *VMI (ESPN+) | ppd. |
| J9 | *at Wofford (ESPN+) | ppd. |
| J13 | *SAMFORD (ESPN+) | ppd. |
| J16 | *at Furman (ESPN+) | L, 66-78 |
| J18 | *VMI (ESPN+) | W, 92-81 |
| J20 | *at Western Carolina (ESPN+) | W, 59-48 |
| J23 | *FURMAN (ESPN+) | 4 p.m. |
| J27 | *CHATTANOOGA (ESPN+) | 7 p.m. |
| J30 | *THE CITADEL (ESPN+) | 4 p.m. |
| F1 | *SAMFORD (ESPN+) | ppd. |
| F3 | *at Mercer (ESPN+) | 7 p.m. |
| F6 | *at Chattanooga (ESPN+) | 2 p.m. |
| F10 | *at The Citadel (ESPN+) | 7 p.m. |
| F13 | *WOFFORD (ESPN+) | 4 p.m. |
| F15 | *at Wofford (ESPN+) | 7 p.m. |
| F17 | *MERCER (ESPN+) | 7 p.m. |
| F20 | *at Samford (ESPN+) | 8 p.m. |
| F24 | *at VMI (ESPN+) | 7 p.m. |
| F27 | *UNCG (ESPN+) | 4 p.m. |
| M5-8 | at SoCon Championship (Asheville, N.C.) | |


^ - Gulf Coast Showcase (Estero, Fla.)
- Harrah's Cherokee Center Asheville (Asheville, N.C.)



Furman
(10-4, 4-1 SoCon)


| | | |
|------|---|-----------|
| N25 | TUSCULUM (ESPN+) | W, 95-62 |
| N28 | USC UPSTATE^ (ESPN+) | W, 91-63 |
| D2 | SOUTHERN WESLEYAN^ (ESPN+) | W, 89-49 |
| D5 | at College of Charleston (FloHoops) | W, 81-57 |
| D9 | at Cincinnati (ESPN+) | L, 73-78 |
| D12 | FLAGLER (ESPN+) | W, 86-61 |
| D15 | at Alabama (SEC Network) | L, 80-83 |
| D19 | at Winthrop (ESPN+) | L, 71-87 |
| D21 | SOUTH CAROLINA STATE (ESPN+) | W, 118-52 |
| D30 | *at Chattanooga (ESPN+) | W, 77-73 |
| J2 | *MERCER (ESPN+) | W, 83-80 |
| J6 | *at Western Carolina (ESPN+) | ppd. |
| J9 | *VMI (ESPN+) | ppd. |
| J13 | *at The Citadel (ESPN+) | W, 94-88 |
| J16 | *ETSU (ESPN+) | W, 78-66 |
| J20 | *at VMI (ESPN+) | L, 73-74 |
| J23 | *at ETSU (ESPN+) | 4 p.m. |
| J25 | *UNCG (ESPN+) | 7 p.m. |
| J30 | *CHATTANOOGA (ESPN+) | 12 p.m. |
| F3 | *at Samford (ESPN+) | 8 p.m. |
| F6 | *WOFFORD (Nexstar/ESPN+) | 4 p.m. |
| F10 | *at UNCG (ESPN+) | 5 p.m. |
| F13 | *WESTERN CAROLINA (ESPN+) | 12 p.m. |
| F15 | *at Western Carolina (ESPN+) | 12 p.m. |
| F17 | *SAMFORD (ESPN+) | 7 p.m. |
| F20 | *at Mercer (ESPN+) | 2 p.m. |
| F24 | *THE CITADEL (ESPN+) | 7 p.m. |
| F27 | *at Wofford (ESPN+) | 7 p.m. |
| M5-8 | at SoCon Championship (Asheville, N.C.) | |

^ - Furman Multi Team Event



Mercer
(9-4, 2-3 SoCon)


| | | |
|------|---|----------|
| N25 | NORTH GEORGIA (ESPN+) | W, 79-48 |
| N27 | at Georgia Tech (Fox Sports South) | W, 83-73 |
| N30 | GEORGIA STATE (ESPN+) | W, 86-69 |
| D5 | COLUMBIA INTERNATIONAL (ESPN+) | W, 88-62 |
| D6 | SOUTHERN WESLEYAN (ESPN+) | W, 96-85 |
| D10 | *at VMI (ESPN+) | ppd. |
| D13 | at Georgia Southern (ESPN+) | W, 77-75 |
| D16 | at Georgia State (ESPN+) | L, 81-88 |
| D22 | at Kennesaw State (ESPN+) | W, 81-71 |
| D29 | *WOFFORD (ESPN+) | L, 65-78 |
| J2 | *at Furman (ESPN+) | L, 80-83 |
| J6 | *THE CITADEL (ESPN+) | ppd. |
| J9 | *at UNCG (ESPN+) | ppd. |
| J13 | *at Chattanooga (ESPN+) | L, 80-83 |
| J16 | *WESTERN CAROLINA (Nexstar/ESPN+) | W, 78-76 |
| J20 | *at The Citadel (ESPN+) | W, 83-63 |
| J23 | *VMI (Nexstar/ESPN+) | 2 p.m. |
| J27 | *SAMFORD (ESPN+) | ppd. |
| J30 | *at Wofford (ESPN+) | 7 p.m. |
| F1 | *at UNCG (ESPN+) | TBA |
| F3 | *ETSU (ESPN+) | 7 p.m. |
| F10 | *at Samford (ESPN+) | 8 p.m. |
| F13 | *UNCG (ESPN+) | 2 p.m. |
| F17 | *at ETSU (ESPN+) | 7 p.m. |
| F20 | *FURMAN (ESPN+) | 2 p.m. |
| F22 | *THE CITADEL (ESPN+) | TBA |
| F24 | *CHATTANOOGA (ESPN+) | 7 p.m. |
| F27 | *at Western Carolina (ESPN+) | 1 p.m. |
| M5-8 | at SoCon Championship (Asheville, N.C.) | |



UNCG
(9-5, 4-2 SoCon)

| | | |
|------|---|----------|
| N27 | vs. Little Rock^ (ESPN3) | W, 77-70 |
| D1 | vs. Winthrop# (ESPN3) | L, 67-75 |
| D2 | vs. Duquesne^ (ESPN3) | L, 68-81 |
| D10 | at Coppin State (Ustream) | L, 80-86 |
| D11 | NORTH CAROLINA WESLEYAN | ppd. |
| D13 | NORFOLK STATE (ESPN+) | W, 64-47 |
| D15 | USC UPSTATE (ESPN+) | W, 65-57 |
| D19 | at Elon (FloHoops) | W, 71-64 |
| D22 | at North Carolina A&T (Aggies All-Access) | W, 86-65 |
| D30 | *at The Citadel (ESPN+) | ppd. |
| J2 | *ETSU (Nexstar/ESPN+) | L, 61-71 |
| J6 | *at Wofford (ESPN+) | W, 84-75 |
| J9 | *MERCER (ESPN+) | ppd. |
| J9 | *WOFFORD (ESPN+) | L, 45-48 |
| J13 | *at Western Carolina (ESPN+) | ppd. |
| J14 | *at Samford (ESPN+) | W, 87-63 |
| J16 | *at Samford (ESPN+) | W, 82-70 |
| J18 | *THE CITADEL (ESPN+) | W, 87-73 |
| J23 | *at Chattanooga (ESPN+) | 12 p.m. |
| J25 | *at Furman (ESPN+) | 7 p.m. |
| J30 | *VMI (ESPN+) | 7 p.m. |
| F1 | *MERCER (ESPN+) | TBA |
| F3 | *at The Citadel (ESPN+) | TBA |
| F10 | *FURMAN (ESPN+) | 5 p.m. |
| F13 | *at Mercer (ESPN+) | 2 p.m. |
| F17 | *at VMI (ESPN+) | 7 p.m. |
| F20 | *CHATTANOOGA (Nexstar/ESPN+) | 5 p.m. |
| F24 | *WESTERN CAROLINA (ESPN+) | 7 p.m. |
| F27 | *at ETSU (ESPN+) | 4 p.m. |
| M5-8 | at SoCon Championship (Asheville, N.C.) | |

^ - Wade Houston Tipoff Classic (Louisville, Ky.)
- Louisville, Ky.



Samford
(6-8, 2-5 SoCon)


| | | |
|------|---|-----------|
| N25 | GREENVILLE (ESPN+) (exh.) | W, 174-99 |
| N29 | ALABAMA A&M (ESPN+) | L, 76-78 |
| D1 | COVENANT (ESPN+) | W, 97-73 |
| D5 | at Belmont (ESPN+) | W, 96-83 |
| D12 | at Georgia (SEC Network+) | L, 75-79 |
| D16 | at Troy (ESPN+) | L, 71-79 |
| D19 | at Kennesaw State (ESPN+) | W, 65-63 |
| D21 | BELHAVEN (ESPN+) | W, 133-84 |
| D30 | *VMI (ESPN+) | W, 84-71 |
| J2 | *at Wofford (ESPN+) | L, 84-94 |
| J6 | *at Chattanooga (ESPN+) | L, 68-73 |
| J9 | *WESTERN CAROLINA (ESPN+) | ppd. |
| J13 | *at ETSU (ESPN+) | ppd. |
| J14 | *UNCG (ESPN+) | L, 63-87 |
| J16 | *UNCG (ESPN+) | L, 70-82 |
| J18 | *WESTERN CAROLINA (ESPN+) | W, 82-78 |
| J20 | *CHATTANOOGA (ESPN+) | L, 64-70 |
| J23 | *THE CITADEL (ESPN+) | ppd. |
| J27 | *at Mercer (ESPN+) | ppd. |
| J30 | *at Western Carolina (Nexstar/ESPN+) | ppd. |
| F1 | *at ETSU (ESPN+) | ppd. |
| F3 | *FURMAN (ESPN+) | 8 p.m. |
| F10 | *MERCER (ESPN+) | 8 p.m. |
| F13 | *at VMI (Nexstar/ESPN+) | 1 p.m. |
| F17 | *at Furman (ESPN+) | 7 p.m. |
| F20 | *ETSU (ESPN+) | 8 p.m. |
| F22 | *WOFFORD (ESPN+) | 7 p.m. |
| F27 | *at The Citadel (ESPN+) | 1 p.m. |
| M5-8 | at SoCon Championship (Asheville, N.C.) | |



Chattanooga
(12-4, 3-4 SoCon)

| | | |
|------|---|----------|
| N 25 | LANDER (ESPN+) | W, 99-63 |
| N30 | at Tennessee Tech (ESPN+) | W, 62-54 |
| D5 | NORTHERN KENTUCKY (ESPN+) | W, 79-72 |
| D7 | at Middle Tennessee (CUSA.TV) | W, 80-70 |
| D9 | at Bellarmine (ESPN+) | W, 77-68 |
| D12 | NORTH GEORGIA (ESPN+) | W, 81-63 |
| D16 | UNC ASHEVILLE (ESPN+) | W, 69-66 |
| D19 | at UAB (CUSA.TV) | W, 69-66 |
| D22 | at Tennessee State (ESPN+) | W, 66-63 |
| D30 | *FURMAN (ESPN+) | L, 73-77 |
| J2 | *at VMI (ESPN+) | L, 79-84 |
| J6 | *SAMFORD (ESPN+) | W, 73-68 |
| J9 | *at The Citadel (Nexstar/ESPN+) | L, 87-92 |
| J13 | *MERCER (ESPN+) | W, 83-80 |
| J16 | *WOFFORD (ESPN+) | L, 59-77 |
| J20 | *at Samford (ESPN+) | W, 70-64 |
| J23 | *UNCG (ESPN+) | 12 p.m. |
| J27 | *at ETSU (ESPN+) | 7 p.m. |
| J30 | *at Furman^ (ESPN+) | 12 p.m. |
| F3 | *at Western Carolina (ESPN+) | 7 p.m. |
| F6 | *ETSU (ESPN+) | 2 p.m. |
| F10 | *at Wofford (ESPN+) | 7 p.m. |
| F13 | *THE CITADEL (ESPN+) | 12 p.m. |
| F17 | *WESTERN CAROLINA (ESPN+) | 7 p.m. |
| F20 | *at UNCG (Nexstar/ESPN+) | 5 p.m. |
| F24 | *at Mercer (ESPN+) | 7 p.m. |
| F27 | *VMI (ESPN+) | 7 p.m. |
| M5-8 | at SoCon Championship (Asheville, N.C.) | |


^ - Bon Secours Wellness Arena (Greenville, S.C.)



VMI
(8-7, 3-3 SoCon)

| | | |
|------|---|------------|
| N25 | ST. ANDREWS (ESPN+) | W, 90-63 |
| N28 | at Penn State (Big Ten Network+) | L, 65-86 |
| D1 | LONGWOOD (ESPN+) | W, 84-71 |
| D3 | at No. 16 Virginia Tech (ACC Network) | L, 57-64 |
| D8 | GREENSBORO COLLEGE (ESPN+) | W, 100-65 |
| D10 | *MERCER (ESPN+) | ppd. |
| D13 | HAMPTON^ (ESPN+) | W, 79-64 |
| D15 | CAMPBELLVILLE HARRODSBURG (ESPN+) | W, 106-72 |
| D18 | at Gardner-Webb (ESPN+) | L, 77-88 |
| D21 | at George Mason (ESPN+) | L, 66-68 |
| D30 | *at Samford (ESPN+) | L, 71-84 |
| J2 | *CHATTANOOGA (ESPN+) | W, 84-79 |
| J6 | *at ETSU (ESPN+) | ppd. |
| J9 | *at Furman (ESPN+) | ppd. |
| J13 | *WOFFORD (ESPN+) | L, 78-80 |
| J16 | *THE CITADEL (ESPN+) | W, 110-103 |
| J18 | *at ETSU (ESPN+) | L, 81-92 |
| J20 | *FURMAN (Nexstar/ESPN+) | W, 74-73 |
| J23 | *at Mercer (Nexstar/ESPN+) | 2 p.m. |
| J27 | *WESTERN CAROLINA (ESPN+) | 7 p.m. |
| J30 | *at UNCG (ESPN+) | 7 p.m. |
| F3 | *at Wofford (ESPN+) | 7 p.m. |
| F10 | *at Western Carolina (ESPN+) | 7 p.m. |
| F13 | *SAMFORD (Nexstar/ESPN+) | 1 p.m. |
| F17 | *UNCG (ESPN+) | 7 p.m. |
| F20 | *at The Citadel (ESPN+) | 1 p.m. |
| F24 | *ETSU (ESPN+) | 7 p.m. |
| F27 | *at Chattanooga (ESPN+) | 7 p.m. |
| M5-8 | at SoCon Championship (Asheville, N.C.) | |

^ - Keydet Classic



Western Carolina
(7-6, 0-4 SoCon)

| | | |
|------|--|----------------|
| N25 | vs. UNCVA^ (ESPN+) | W, 98-76 |
| N27 | vs. Troy# (ESPN+) | L, 64-66 |
| N28 | at UNC Asheville# (ESPN+) | W, 83-81 (OT) |
| N30 | PIEDMONT (ESPN+) | W, 96-58 |
| D3 | NEWBERRY (ESPN+) | W, 91-84 |
| D6 | TENNESSEE TECH (ESPN+) | W, 76-75 (OT) |
| D12 | at North Carolina A&T (Aggie All-Access) | W, 104-98 (OT) |
| D15 | at VCU (MASN/ESPN+) | L, 68-93 |
| D18 | at College of Charleston (FloHoops) | W, 76-70 (OT) |
| D30 | *at ETSU (ESPN+) | L, 78-86 |
| J2 | *THE CITADEL (ESPN+) | ppd. |
| J6 | *FURMAN (ESPN+) | ppd. |
| J9 | *at Samford (ESPN+) | ppd. |
| J13 | *UNCG (ESPN+) | ppd. |
| J16 | *at Mercer (Nexstar/ESPN+) | L, 76-78 |
| J18 | *at Samford (ESPN+) | L, 78-82 |
| J20 | *ETSU (ESPN+) | L, 48-59 |
| J23 | *at Wofford (ESPN+) | 4 p.m. |
| J27 | *at VMI (ESPN+) | 7 p.m. |
| J30 | *SAMFORD (Nexstar/ESPN+) | ppd. |
| F1 | *THE CITADEL (ESPN+) | 12 p.m. |
| F3 | *CHATTANOOGA (ESPN+) | 7 p.m. |
| F6 | *at The Citadel (ESPN+) | 1 p.m. |
| F10 | *VMI (ESPN+) | 7 p.m. |
| F13 | *at Furman\$ (ESPN+) | 12 p.m. |
| F15 | *FURMAN (ESPN+) | 12 p.m. |
| F17 | *at Chattanooga (ESPN+) | 7 p.m. |
| F20 | *WOFFORD (ESPN+) | 1 p.m. |
| F24 | *at UNCG (ESPN+) | 7 p.m. |
| F27 | *MERCER (ESPN+) | 1 p.m. |
| M5-8 | at SoCon Championship (Asheville, N.C.) | |

^ - Asheville, N.C.
- Mako Medical Asheville Classic (Asheville, N.C.)
\$ - Bon Secours Wellness Arena (Greenville, S.C.)



Wofford
(8-4, 5-1 SoCon)

| | | |
|------|---|-----------|
| N25 | TOCCOA FALLS (ESPN+) | W, 88-49 |
| N18 | CARVER (ESPN+) | W, 111-37 |
| D7 | at No. 19 Richmond (ESPN+) | L, 72-77 |
| D12 | vs. USF^ (ESPNNews) | L, 56-58 |
| D15 | COASTAL CAROLINA (ESPN+) | W, 88-77 |
| D21 | at Texas A&M (SEC Network) | L, 52-70 |
| D29 | *at Mercer (ESPN+) | W, 78-65 |
| J2 | *SAMFORD (ESPN+) | W, 94-84 |
| J6 | *UNCG (ESPN+) | L, 75-84 |
| J9 | *ETSU (ESPN+) | ppd. |
| J9 | *at UNCG (ESPN+) | W, 48-45 |
| J13 | *at VMI (ESPN+) | W, 80-78 |
| J16 | *at Chattanooga (ESPN+) | W, 77-59 |
| J23 | *WESTERN CAROLINA (ESPN+) | 4 p.m. |
| J27 | *at The Citadel (ESPN+) | 7 p.m. |
| J30 | *MERCER (ESPN+) | 7 p.m. |
| F3 | *VMI (ESPN+) | 7 p.m. |
| F6 | *at Furman# (Nexstar/ESPN+) | 4 p.m. |
| F10 | *CHATTANOOGA (ESPN+) | 7 p.m. |
| F13 | *at ETSU (ESPN+) | 4 p.m. |
| F15 | *ETSU (ESPN+) | 7 p.m. |
| F17 | *THE CITADEL (ESPN+) | 7 p.m. |
| F20 | *at Western Carolina (ESPN+) | 1 p.m. |
| F22 | *at Samford (ESPN+) | 7 p.m. |
| F27 | *FURMAN (ESPN+) | 7 p.m. |
| M5-8 | at SoCon Championship (Asheville, N.C.) | |

^ - Holiday Hoopsgiving (Atlanta, Ga.)
- Bon Secours Wellness Arena (Greenville, S.C.)

Southern Conference men's basketball media relations information

| | |
|---|--|
| <p>The Citadel (CitadelSports.com) Currie McFayden (cmcfayde@citadel.edu) Office: 843-953-6567</p> <p>ETSU (ETSUBucs.com) Kevin Brown (brownk@etsu.edu) Office: 423-439-5263</p> <p>Furman (FurmanPaladins.com) Jordan Caskey (jordan.caskey@furman.edu) Office: 864-294-3065</p> <p>Mercer (MercerBears.com) Kraig Doremus (doremus_kj@mercer.edu) Office: 478-301-5218</p> <p>UNCG (UNCGSpartans.com) Rob Knox (reknox@uncg.edu) Office: 336-334-5615</p> <p>Samford (SamfordSports.com) Joey Mullins (jmmulli1@samford.edu) Office: 205-726-2799</p> | <p>Chattanooga (GoMocs.com) Jim Horten (james-horten@utc.edu) Office: 423-425-2350</p> <p>VMI (VMIKeydets.com) Wade Branner (brannerwh@vmi.edu) Office: 540-464-7515</p> <p>Western Carolina (CatamountSports.com) Steven Grandy (sgrandy@email.wcu.edu) Office: 828-227-2655</p> <p>Wofford (WoffordTerriers.com) Carroll Rich (richcm@wofford.edu) Office: 864-597-4092</p> <p>Southern Conference (SoConSports.com) Phil Perry (pperry@socon.org) Office: 864-591-5100 // Cell: 864-525-5174</p> |
|---|--|

2020-21 Southern Conference
CONFERENCE BASKETBALL STATISTICS
Through games of Jan 22, 2021 (All games)

| SCORING OFFENSE | G | W-L | Pts | Avg/G |
|---------------------|----|------|------|-------|
| 1. The Citadel | 12 | 8-4 | 1069 | 89.1 |
| 2. Furman | 14 | 10-4 | 1189 | 84.9 |
| 3. VMI | 15 | 8-7 | 1222 | 81.5 |
| 4. Mercer | 13 | 9-4 | 1057 | 81.3 |
| 5. Samford | 14 | 6-8 | 1129 | 80.6 |
| 6. Western Carolina | 13 | 7-6 | 1036 | 79.7 |
| 7. Wofford | 12 | 8-4 | 919 | 76.6 |
| 8. Chattanooga | 16 | 12-4 | 1206 | 75.4 |
| 9. UNCG | 14 | 9-5 | 1024 | 73.1 |
| 10. ETSU | 13 | 8-5 | 897 | 69.0 |

| SCORING DEFENSE | G | Pts | Avg/G |
|---------------------|----|------|-------|
| 1. ETSU | 13 | 843 | 64.8 |
| 2. Wofford | 12 | 783 | 65.2 |
| 3. UNCG | 14 | 945 | 67.5 |
| 4. Furman | 14 | 973 | 69.5 |
| 5. Chattanooga | 16 | 1127 | 70.4 |
| 6. Mercer | 13 | 954 | 73.4 |
| 7. VMI | 15 | 1152 | 76.8 |
| 8. Western Carolina | 13 | 1006 | 77.4 |
| 9. The Citadel | 12 | 932 | 77.7 |
| 10. Samford | 14 | 1094 | 78.1 |

| SCORING MARGIN | G | Offense | Defense | Margin |
|----------------------|----|---------|---------|--------|
| 1. Furman | 14 | 84.9 | 69.5 | +15.4 |
| 2. The Citadel | 12 | 89.1 | 77.7 | +11.4 |
| 3. Wofford | 12 | 76.6 | 65.2 | +11.3 |
| 4. Mercer | 13 | 81.3 | 73.4 | +7.9 |
| 5. UNCG | 14 | 73.1 | 67.5 | +5.6 |
| 6. Chattanooga | 16 | 75.4 | 70.4 | +4.9 |
| 7. VMI | 15 | 81.5 | 76.8 | +4.7 |
| 8. ETSU | 13 | 69.0 | 64.8 | +4.2 |
| 9. Samford | 14 | 80.6 | 78.1 | +2.5 |
| 10. Western Carolina | 13 | 79.7 | 77.4 | +2.3 |

| FREE THROW PCT | G | FTM | FTA | Pct. |
|---------------------|----|-----|-----|------|
| 1. VMI | 15 | 210 | 263 | .798 |
| 2. Chattanooga | 16 | 228 | 288 | .792 |
| 3. Furman | 14 | 201 | 271 | .742 |
| 4. Western Carolina | 13 | 232 | 319 | .727 |
| 5. The Citadel | 12 | 183 | 258 | .709 |
| 6. Samford | 14 | 170 | 246 | .691 |
| 7. Mercer | 13 | 156 | 226 | .690 |
| 8. UNCG | 14 | 165 | 246 | .671 |
| 9. ETSU | 13 | 157 | 237 | .662 |
| 10. Wofford | 12 | 136 | 209 | .651 |

| FIELD GOAL PERCENTAGE | G | FGM | FGA | Pct. |
|-----------------------|----|-----|-----|------|
| 1. Furman | 14 | 426 | 853 | .499 |
| 2. Mercer | 13 | 393 | 800 | .491 |
| 3. Wofford | 12 | 326 | 687 | .475 |
| 4. VMI | 15 | 421 | 892 | .472 |
| 5. The Citadel | 12 | 364 | 782 | .465 |
| 6. Samford | 14 | 419 | 903 | .464 |
| 7. Western Carolina | 13 | 346 | 756 | .458 |
| 8. Chattanooga | 16 | 423 | 946 | .447 |
| 9. ETSU | 13 | 321 | 737 | .436 |
| 10. UNCG | 14 | 377 | 913 | .413 |

| FIELD GOAL PCT DEFENSE | G | FGM | FGA | Pct. |
|------------------------|----|-----|-----|------|
| 1. ETSU | 13 | 283 | 720 | .393 |
| 2. UNCG | 14 | 311 | 768 | .405 |
| 3. Wofford | 12 | 286 | 685 | .418 |
| 4. Mercer | 13 | 344 | 803 | .428 |
| 5. Samford | 14 | 353 | 823 | .429 |
| 6. VMI | 15 | 416 | 961 | .433 |
| 7. Furman | 14 | 355 | 812 | .437 |
| 8. The Citadel | 12 | 346 | 790 | .438 |
| 9. Western Carolina | 13 | 360 | 813 | .443 |
| 10. Chattanooga | 16 | 437 | 934 | .468 |

| 3-POINT FG PCT | G | 3FGM | 3FGA | Pct. |
|---------------------|----|------|------|------|
| 1. The Citadel | 12 | 158 | 387 | .408 |
| 2. VMI | 15 | 170 | 425 | .400 |
| 3. Chattanooga | 16 | 132 | 356 | .371 |
| 4. Wofford | 12 | 131 | 355 | .369 |
| 5. Mercer | 13 | 115 | 319 | .361 |
| 6. Furman | 14 | 136 | 389 | .350 |
| 7. Western Carolina | 13 | 112 | 330 | .339 |
| 8. Samford | 14 | 121 | 357 | .339 |
| 9. ETSU | 13 | 98 | 302 | .325 |
| 10. UNCG | 14 | 105 | 375 | .280 |

| 3-POINT FG PCT DEFENSE | G | 3FGM | 3FGA | Pct. |
|------------------------|----|------|------|------|
| 1. UNCG | 14 | 90 | 296 | .304 |
| 2. Wofford | 12 | 84 | 274 | .307 |
| 3. Furman | 14 | 100 | 321 | .312 |
| 4. The Citadel | 12 | 74 | 235 | .315 |
| 5. Chattanooga | 16 | 103 | 320 | .322 |
| 6. Mercer | 13 | 95 | 288 | .330 |
| 7. ETSU | 13 | 103 | 309 | .333 |
| 8. Samford | 14 | 137 | 411 | .333 |
| 9. Western Carolina | 13 | 106 | 307 | .345 |
| 10. VMI | 15 | 153 | 417 | .367 |

| REBOUNDING OFFENSE | G | Rebounds | Avg/G |
|---------------------|----|----------|-------|
| 1. UNCG | 14 | 587 | 41.9 |
| 2. The Citadel | 12 | 480 | 40.0 |
| 3. Samford | 14 | 558 | 39.9 |
| 4. Mercer | 13 | 508 | 39.1 |
| 5. Wofford | 12 | 458 | 38.2 |
| 6. VMI | 15 | 559 | 37.3 |
| 7. ETSU | 13 | 480 | 36.9 |
| 8. Furman | 14 | 507 | 36.2 |
| 9. Western Carolina | 13 | 464 | 35.7 |
| 10. Chattanooga | 16 | 550 | 34.4 |

| REBOUNDING DEFENSE | G | Rebounds | Avg/G |
|---------------------|----|----------|-------|
| 1. Wofford | 12 | 383 | 31.9 |
| 2. Mercer | 13 | 428 | 32.9 |
| 3. Furman | 14 | 473 | 33.8 |
| 4. ETSU | 13 | 444 | 34.2 |
| 5. Chattanooga | 16 | 551 | 34.4 |
| 6. Samford | 14 | 492 | 35.1 |
| 7. VMI | 15 | 533 | 35.5 |
| 8. Western Carolina | 13 | 464 | 35.7 |
| 9. The Citadel | 12 | 432 | 36.0 |
| 10. UNCG | 14 | 515 | 36.8 |

2020-21 Southern Conference
CONFERENCE BASKETBALL STATISTICS
Through games of Jan 22, 2021 (All games)

| REBOUNDING MARGIN | G | Team | Avg. | Opp. | Avg. | Margin |
|---------------------|----|------|------|------|------|--------|
| 1. Wofford | 12 | 458 | 38.2 | 383 | 31.9 | +6.2 |
| 2. Mercer | 13 | 508 | 39.1 | 428 | 32.9 | +6.2 |
| 3. UNCG | 14 | 587 | 41.9 | 515 | 36.8 | +5.1 |
| 4. Samford | 14 | 558 | 39.9 | 492 | 35.1 | +4.7 |
| 5. The Citadel | 12 | 480 | 40.0 | 432 | 36.0 | +4.0 |
| 6. ETSU | 13 | 480 | 36.9 | 444 | 34.2 | +2.8 |
| 7. Furman | 14 | 507 | 36.2 | 473 | 33.8 | +2.4 |
| 8. VMI | 15 | 559 | 37.3 | 533 | 35.5 | +1.7 |
| 9. Western Carolina | 13 | 464 | 35.7 | 464 | 35.7 | +0.0 |
| 10. Chattanooga | 16 | 550 | 34.4 | 551 | 34.4 | -0.1 |

| BLOCKED SHOTS | G | No. | Avg/G |
|---------------------|----|-----|-------|
| 1. The Citadel | 12 | 56 | 4.7 |
| 2. UNCG | 14 | 65 | 4.6 |
| 3. Mercer | 13 | 48 | 3.7 |
| 4. Furman | 14 | 45 | 3.2 |
| 5. VMI | 15 | 45 | 3.0 |
| 6. Western Carolina | 13 | 37 | 2.8 |
| 7. Samford | 14 | 34 | 2.4 |
| 8. Wofford | 12 | 26 | 2.2 |
| 9. ETSU | 13 | 28 | 2.2 |
| 10. Chattanooga | 16 | 23 | 1.4 |

| ASSISTS | G | No. | Avg/G |
|---------------------|----|-----|-------|
| 1. Furman | 14 | 254 | 18.1 |
| 2. Mercer | 13 | 233 | 17.9 |
| 3. The Citadel | 12 | 210 | 17.5 |
| 4. Samford | 14 | 233 | 16.6 |
| 5. VMI | 15 | 247 | 16.5 |
| 6. Wofford | 12 | 184 | 15.3 |
| 7. Western Carolina | 13 | 180 | 13.8 |
| 8. Chattanooga | 16 | 207 | 12.9 |
| 9. ETSU | 13 | 161 | 12.4 |
| 10. UNCG | 14 | 173 | 12.4 |

| STEALS | G | No. | Avg/G |
|----------------------|----|-----|-------|
| 1. Furman | 14 | 131 | 9.4 |
| 2. ETSU | 13 | 101 | 7.8 |
| 3. UNCG | 14 | 101 | 7.2 |
| 4. Samford | 14 | 95 | 6.8 |
| 5. Mercer | 13 | 88 | 6.8 |
| 6. Chattanooga | 16 | 107 | 6.7 |
| 7. Wofford | 12 | 79 | 6.6 |
| 8. The Citadel | 12 | 73 | 6.1 |
| 9. VMI | 15 | 89 | 5.9 |
| 10. Western Carolina | 13 | 70 | 5.4 |

| TURNOVER MARGIN | G | Team | Avg. | Opp. | Avg. | Margin |
|---------------------|----|------|------|------|------|--------|
| 1. Furman | 14 | 181 | 12.9 | 229 | 16.4 | +3.4 |
| 2. UNCG | 14 | 182 | 13.0 | 218 | 15.6 | +2.6 |
| 3. Chattanooga | 16 | 188 | 11.8 | 226 | 14.1 | +2.4 |
| 4. ETSU | 13 | 200 | 15.4 | 200 | 15.4 | +0.0 |
| 5. The Citadel | 12 | 156 | 13.0 | 154 | 12.8 | -0.2 |
| 6. Wofford | 12 | 167 | 13.9 | 163 | 13.6 | -0.3 |
| 7. Samford | 14 | 221 | 15.8 | 207 | 14.8 | -1.0 |
| 8. Mercer | 13 | 175 | 13.5 | 160 | 12.3 | -1.2 |
| 9. Western Carolina | 13 | 199 | 15.3 | 176 | 13.5 | -1.8 |
| 10. VMI | 15 | 200 | 13.3 | 172 | 11.5 | -1.9 |

| ASSIST/TURNOVER RATIO | G | Ast. | Avg. | T/O | Avg. | Ratio |
|-----------------------|----|------|------|-----|------|-------|
| 1. Furman | 14 | 254 | 18.1 | 181 | 12.9 | 1.4 |
| 2. The Citadel | 12 | 210 | 17.5 | 156 | 13.0 | 1.3 |
| 3. Mercer | 13 | 233 | 17.9 | 175 | 13.5 | 1.3 |
| 4. VMI | 15 | 247 | 16.5 | 200 | 13.3 | 1.2 |
| 5. Wofford | 12 | 184 | 15.3 | 167 | 13.9 | 1.1 |
| 6. Chattanooga | 16 | 207 | 12.9 | 188 | 11.8 | 1.1 |
| 7. Samford | 14 | 233 | 16.6 | 221 | 15.8 | 1.1 |
| 8. UNCG | 14 | 173 | 12.4 | 182 | 13.0 | 1.0 |
| 9. Western Carolina | 13 | 180 | 13.8 | 199 | 15.3 | 0.9 |
| 10. ETSU | 13 | 161 | 12.4 | 200 | 15.4 | 0.8 |

| OFFENSIVE REBOUNDS | G | No. | Avg/G |
|---------------------|----|-----|-------|
| 1. UNCG | 14 | 204 | 14.6 |
| 2. Samford | 14 | 167 | 11.9 |
| 3. Wofford | 12 | 139 | 11.6 |
| 4. The Citadel | 12 | 136 | 11.3 |
| 5. ETSU | 13 | 131 | 10.1 |
| 6. Mercer | 13 | 128 | 9.8 |
| 7. Furman | 14 | 132 | 9.4 |
| 8. Western Carolina | 13 | 112 | 8.6 |
| 9. VMI | 15 | 127 | 8.5 |
| 10. Chattanooga | 16 | 133 | 8.3 |

| DEFENSIVE REBOUNDS | G | No. | Avg/G |
|---------------------|----|-----|-------|
| 1. Mercer | 13 | 380 | 29.2 |
| 2. VMI | 15 | 432 | 28.8 |
| 3. The Citadel | 12 | 344 | 28.7 |
| 4. Samford | 14 | 391 | 27.9 |
| 5. UNCG | 14 | 383 | 27.4 |
| 6. Western Carolina | 13 | 352 | 27.1 |
| 7. ETSU | 13 | 349 | 26.8 |
| 8. Furman | 14 | 375 | 26.8 |
| 9. Wofford | 12 | 319 | 26.6 |
| 10. Chattanooga | 16 | 417 | 26.1 |

| DEFENSIVE REB PCT. | G | D-Reb | Opp. OR | D-Reb% |
|---------------------|----|-------|---------|--------|
| 1. Chattanooga | 16 | 417 | 126 | .768 |
| 2. Mercer | 13 | 380 | 115 | .768 |
| 3. Samford | 14 | 391 | 134 | .745 |
| 4. The Citadel | 12 | 344 | 119 | .743 |
| 5. ETSU | 13 | 349 | 127 | .733 |
| 6. UNCG | 14 | 383 | 140 | .732 |
| 7. VMI | 15 | 432 | 158 | .732 |
| 8. Wofford | 12 | 319 | 117 | .732 |
| 9. Western Carolina | 13 | 352 | 130 | .730 |
| 10. Furman | 14 | 375 | 142 | .725 |

| OFFENSIVE REB PCT. | G | O-Reb | Opp. DR | O-Reb% |
|---------------------|----|-------|---------|--------|
| 1. UNCG | 14 | 204 | 375 | .352 |
| 2. Wofford | 12 | 139 | 266 | .343 |
| 3. Samford | 14 | 167 | 358 | .318 |
| 4. The Citadel | 12 | 136 | 313 | .303 |
| 5. ETSU | 13 | 131 | 317 | .292 |
| 6. Mercer | 13 | 128 | 313 | .290 |
| 7. Furman | 14 | 132 | 331 | .285 |
| 8. VMI | 15 | 127 | 375 | .253 |
| 9. Western Carolina | 13 | 112 | 334 | .251 |
| 10. Chattanooga | 16 | 133 | 425 | .238 |

2020-21 Southern Conference
CONFERENCE BASKETBALL STATISTICS
Through games of Jan 22, 2021 (All games)

| 3-POINT FG MADE | G | No. | Avg/G |
|---------------------|----|-----|-------|
| 1. The Citadel | 12 | 158 | 13.2 |
| 2. VMI | 15 | 170 | 11.3 |
| 3. Wofford | 12 | 131 | 10.9 |
| 4. Furman | 14 | 136 | 9.7 |
| 5. Mercer | 13 | 115 | 8.8 |
| 6. Samford | 14 | 121 | 8.6 |
| 7. Western Carolina | 13 | 112 | 8.6 |
| 8. Chattanooga | 16 | 132 | 8.3 |
| 9. ETSU | 13 | 98 | 7.5 |
| 10. UNCG | 14 | 105 | 7.5 |

2020-21 Southern Conference
CONFERENCE BASKETBALL STATISTICS
Through games of Jan 22, 2021 (All games)

| Team | Conference | Pct. | PF | PA | Overall | Pct. | PF | PA | Current unbeaten streak |
|------------------|------------|------|------|------|---------|------|------|------|-------------------------|
| Wofford | 5-1 | .833 | 75.3 | 69.2 | 8-4 | .667 | 76.6 | 65.2 | Wofford -- 3 |
| Furman | 4-1 | .800 | 81.0 | 76.2 | 10-4 | .714 | 84.9 | 69.5 | UNCG -- 3 |
| ETSU | 4-1 | .800 | 74.8 | 69.2 | 8-5 | .615 | 69.0 | 64.8 | Mercer -- 2 |
| UNCG | 4-2 | .667 | 74.3 | 66.7 | 9-5 | .643 | 73.1 | 67.5 | ETSU -- 2 |
| VMI | 3-3 | .500 | 83.0 | 85.2 | 8-7 | .533 | 81.5 | 76.8 | VMI -- 1 |
| Chattanooga | 3-4 | .429 | 74.9 | 77.4 | 12-4 | .750 | 75.4 | 70.4 | Chattanooga -- 1 |
| Mercer | 2-3 | .400 | 77.2 | 76.6 | 9-4 | .692 | 81.3 | 73.4 | |
| Samford | 2-5 | .286 | 73.6 | 79.3 | 6-8 | .429 | 80.6 | 78.1 | |
| The Citadel | 1-4 | .200 | 83.8 | 92.2 | 8-4 | .667 | 89.1 | 77.7 | |
| Western Carolina | 0-4 | .000 | 70.0 | 76.2 | 7-6 | .538 | 79.7 | 77.4 | |

| TEAM SUMMARIES | G | PF-PA | Avg score | Margin | FG-FGA | Pct. | 3FG-FGA | Pct. | FT-FTA | Pct. | RebF | RebA | Margin |
|------------------|----|-----------|-----------|--------|---------|------|---------|------|---------|------|------|------|--------|
| Chattanooga | 16 | 1206-1127 | 75.4-70.4 | +4.9 | 423-946 | .447 | 132-356 | .371 | 228-288 | .792 | 550 | 551 | -0.1 |
| ETSU | 13 | 897-843 | 69.0-64.8 | +4.2 | 321-737 | .436 | 98-302 | .325 | 157-237 | .662 | 480 | 444 | +2.8 |
| Furman | 14 | 1189-973 | 84.9-69.5 | +15.4 | 426-853 | .499 | 136-389 | .350 | 201-271 | .742 | 507 | 473 | +2.4 |
| Mercer | 13 | 1057-954 | 81.3-73.4 | +7.9 | 393-800 | .491 | 115-319 | .361 | 156-226 | .690 | 508 | 428 | +6.2 |
| Samford | 14 | 1129-1094 | 80.6-78.1 | +2.5 | 419-903 | .464 | 121-357 | .339 | 170-246 | .691 | 558 | 492 | +4.7 |
| The Citadel | 12 | 1069-932 | 89.1-77.7 | +11.4 | 364-782 | .465 | 158-387 | .408 | 183-258 | .709 | 480 | 432 | +4.0 |
| UNCG | 14 | 1024-945 | 73.1-67.5 | +5.6 | 377-913 | .413 | 105-375 | .280 | 165-246 | .671 | 587 | 515 | +5.1 |
| VMI | 15 | 1222-1152 | 81.5-76.8 | +4.7 | 421-892 | .472 | 170-425 | .400 | 210-263 | .798 | 559 | 533 | +1.7 |
| Western Carolina | 13 | 1036-1006 | 79.7-77.4 | +2.3 | 346-756 | .458 | 112-330 | .339 | 232-319 | .727 | 464 | 464 | +0.0 |
| Wofford | 12 | 919-783 | 76.6-65.2 | +11.3 | 326-687 | .475 | 131-355 | .369 | 136-209 | .651 | 458 | 383 | +6.2 |

| ATTENDANCE | Home | Average | Away | Average | Neutral | Average | Total | Average |
|------------------|----------|---------|----------|---------|---------|---------|-----------|---------|
| Chattanooga | 8-0 | 0 | 8-3761 | 470 | 0-0 | 0 | 16-3761 | 235 |
| ETSU | 6-1669 | 278 | 4-2455 | 614 | 3-150 | 50 | 13-4274 | 329 |
| Furman | 7-1750 | 250 | 7-3718 | 531 | 0-0 | 0 | 14-5468 | 391 |
| Mercer | 6-4577 | 763 | 7-3157 | 451 | 0-0 | 0 | 13-7734 | 595 |
| Samford | 8-3595 | 449 | 6-2811 | 468 | 0-0 | 0 | 14-6406 | 458 |
| The Citadel | 9-3686 | 410 | 3-250 | 83 | 0-0 | 0 | 12-3936 | 328 |
| UNCG | 5-210 | 42 | 6-916 | 153 | 3-3013 | 1004 | 14-4139 | 296 |
| VMI | 9-1843 | 205 | 6-1866 | 311 | 0-0 | 0 | 15-3709 | 247 |
| Western Carolina | 4-0 | 0 | 7-3717 | 531 | 2-0 | 0 | 13-3717 | 286 |
| Wofford | 5-0 | 0 | 6-1822 | 304 | 1-0 | 0 | 12-1822 | 152 |
| Totals | 67-17330 | 259 | 60-24473 | 408 | 9-3163 | 351 | 136-44966 | 331 |

2020-21 Southern Conference
INDIVIDUAL BASKETBALL STATISTICS
Through games of Jan 22, 2021 (All games)

To be ranked, a player must appear in at least 75.0% of their team's games.

| SCORING | | | | | | | REBOUNDING | | | | | | |
|----------------------------|----|----|-----|-----|----|-----------|-----------------------------|----|----|-----|-----|-------|-------|
| | Cl | G | FG | 3FG | FT | Pts Avg/G | | Cl | G | Off | Def | Total | Avg/G |
| 1. Hayden Brown-CIT | Jr | 11 | 77 | 21 | 61 | 236 21.5 | 1. Hayden Brown-CIT | Jr | 11 | 22 | 88 | 110 | 10.0 |
| 2. Storm Murphy-WOF | Sr | 12 | 76 | 37 | 44 | 233 19.4 | 2. Malachi Smith-UTC | So | 16 | 26 | 130 | 156 | 9.8 |
| 3. Greg Parham-VMI | Sr | 15 | 103 | 47 | 37 | 290 19.3 | 3. Felipe Haase-MER | Jr | 13 | 24 | 94 | 118 | 9.1 |
| 4. Kaiden Rice-CIT | Sr | 12 | 76 | 58 | 18 | 228 19.0 | 4. Jake Stephens-VMI | Jr | 15 | 20 | 97 | 117 | 7.8 |
| 5. Isaiah Miller-UNCG | Sr | 13 | 102 | 5 | 37 | 246 18.9 | 5. Isaiah Miller-UNCG | Sr | 13 | 18 | 74 | 92 | 7.1 |
| 6. Mike Bothwell-FUR | Jr | 14 | 94 | 21 | 49 | 258 18.4 | 6. Damari Monsanto-ETSU | Fr | 13 | 18 | 74 | 92 | 7.1 |
| 7. David Jean-Baptiste-UTC | Sr | 12 | 81 | 32 | 23 | 217 18.1 | 7. Mohammed Abdulsalam-UNCG | Jr | 14 | 40 | 57 | 97 | 6.9 |
| 8. Mason Faulkner-WCU | Sr | 11 | 57 | 15 | 56 | 185 16.8 | 8. Myles Lewis-VMI | Sr | 12 | 22 | 60 | 82 | 6.8 |
| 9. Ledarius Brewer-ETSU | Jr | 12 | 76 | 28 | 21 | 201 16.8 | 9. Messiah Jones-WOF | So | 9 | 28 | 31 | 59 | 6.6 |
| 10. Malachi Smith-UTC | So | 16 | 92 | 20 | 57 | 261 16.3 | 10. Silas Adheke-ETSU | Sr | 13 | 28 | 55 | 83 | 6.4 |
| 11. Ross Cummings-MER | Sr | 13 | 68 | 40 | 25 | 201 15.5 | 11. Xavier Cork-WCU | So | 13 | 30 | 48 | 78 | 6.0 |
| 12. Matt Halvorsen-WCU | Sr | 13 | 54 | 52 | 37 | 197 15.2 | 12. Mason Faulkner-WCU | Sr | 11 | 13 | 51 | 64 | 5.8 |
| 13. Clay Mounce-FUR | Sr | 14 | 79 | 29 | 23 | 210 15.0 | 13. Tyler Harris-WCU | So | 13 | 17 | 57 | 74 | 5.7 |
| 14. Xavier Cork-WCU | So | 13 | 77 | 0 | 39 | 193 14.8 | 14. Clay Mounce-FUR | Sr | 14 | 32 | 46 | 78 | 5.6 |
| 15. Noah Gurley-FUR | Jr | 14 | 71 | 17 | 38 | 197 14.1 | 15. Jalen Slawson-FUR | Jr | 14 | 16 | 61 | 77 | 5.5 |
| 16. Jake Stephens-VMI | Jr | 15 | 67 | 17 | 60 | 211 14.1 | 16. Ryan Larson-WOF | Jr | 9 | 5 | 44 | 49 | 5.4 |
| 17. Neftali Alvarez-MER | So | 11 | 49 | 12 | 41 | 151 13.7 | 17. Mike Bothwell-FUR | Jr | 14 | 20 | 56 | 76 | 5.4 |
| 18. Stefan Kenic-UTC | Sr | 16 | 65 | 20 | 61 | 211 13.2 | 18. Ledarius Brewer-ETSU | Jr | 12 | 7 | 56 | 63 | 5.3 |
| 19. Leon Ayers III-MER | Jr | 13 | 70 | 11 | 19 | 170 13.1 | 19. Sean Conway-VMI | So | 15 | 20 | 57 | 77 | 5.1 |
| 20. Maciej Bender-MER | Sr | 13 | 70 | 0 | 26 | 166 12.8 | 20. Noah Gurley-FUR | Jr | 14 | 14 | 57 | 71 | 5.1 |
| 21. Kamdyn Curfman-VMI | So | 15 | 62 | 41 | 23 | 188 12.5 | | | | | | | |
| 22. Felipe Haase-MER | Jr | 13 | 57 | 22 | 22 | 158 12.2 | | | | | | | |
| 23. Fletcher Abee-CIT | So | 12 | 47 | 33 | 18 | 145 12.1 | | | | | | | |
| 24. Tray Hollowell-WOF | Sr | 12 | 48 | 35 | 12 | 143 11.9 | | | | | | | |
| 25. David Sloan-ETSU | Sr | 12 | 42 | 13 | 32 | 129 10.8 | | | | | | | |
| 26. A.J. Staton-McCray-SAM | Fr | 14 | 50 | 23 | 24 | 147 10.5 | | | | | | | |
| 27. Alex Hunter-FUR | Sr | 14 | 47 | 32 | 13 | 139 9.9 | | | | | | | |
| 28. Damari Monsanto-ETSU | Fr | 13 | 46 | 22 | 14 | 128 9.8 | | | | | | | |
| 29. Sean Conway-VMI | So | 15 | 50 | 31 | 14 | 145 9.7 | | | | | | | |
| 30. Jalen Slawson-FUR | Jr | 14 | 43 | 8 | 41 | 135 9.6 | | | | | | | |

| FIELD GOAL PCT | | | | | | ASSISTS | | | |
|-----------------------------|----|----|-----|-----|------|---------------------------|----|----|-----------|
| | Cl | G | FGM | FGA | Pct. | | Cl | G | No. Avg/G |
| 1. Xavier Cork-WCU | So | 13 | 77 | 114 | .675 | 1. Tyler Mofte-CIT | Sr | 9 | 48 5.3 |
| 2. Maciej Bender-MER | Sr | 13 | 70 | 105 | .667 | 2. Neftali Alvarez-MER | So | 11 | 57 5.2 |
| 3. Leon Ayers III-MER | Jr | 13 | 70 | 120 | .583 | 3. Storm Murphy-WOF | Sr | 12 | 57 4.8 |
| 4. Greg Parham-VMI | Sr | 15 | 103 | 195 | .528 | 4. Mason Faulkner-WCU | Sr | 11 | 49 4.5 |
| 5. Hayden Brown-CIT | Jr | 11 | 77 | 148 | .520 | 5. David Sloan-ETSU | Sr | 12 | 50 4.2 |
| 6. Mike Bothwell-FUR | Jr | 14 | 94 | 181 | .519 | 6. Isaiah Miller-UNCG | Sr | 13 | 51 3.9 |
| 7. Ross Cummings-MER | Sr | 13 | 68 | 135 | .504 | 7. Greg Parham-VMI | Sr | 15 | 58 3.9 |
| 8. Clay Mounce-FUR | Sr | 14 | 79 | 158 | .500 | 8. Jeff Gary-MER | Jr | 13 | 50 3.8 |
| Storm Murphy-WOF | Sr | 12 | 76 | 152 | .500 | 9. Mike Bothwell-FUR | Jr | 14 | 51 3.6 |
| 10. Ledarius Brewer-ETSU | Jr | 12 | 76 | 157 | .484 | 10. Alex Hunter-FUR | Sr | 14 | 50 3.6 |
| 11. Isaiah Miller-UNCG | Sr | 13 | 102 | 218 | .468 | 11. Ryan Larson-WOF | Jr | 9 | 32 3.6 |
| 12. David Jean-Baptiste-UTC | Sr | 12 | 81 | 179 | .453 | 12. Malachi Smith-UTC | So | 16 | 56 3.5 |
| 13. Noah Gurley-FUR | Jr | 14 | 71 | 159 | .447 | Keyshaun Langley-UNCG | So | 14 | 49 3.5 |
| 14. Kaiden Rice-CIT | Sr | 12 | 76 | 172 | .442 | 14. Felipe Haase-MER | Jr | 13 | 45 3.5 |
| 15. Mason Faulkner-WCU | Sr | 11 | 57 | 131 | .435 | 15. Richardson Maitre-SAM | Sr | 14 | 47 3.4 |

2020-21 Southern Conference
INDIVIDUAL BASKETBALL STATISTICS
Through games of Jan 22, 2021 (All games)

| FREE THROW PCT | | | | | |
|------------------------|----|----|-----|-----|------|
| | Cl | G | FTM | FTA | Pct. |
| 1. Storm Murphy-WOF | Sr | 12 | 44 | 50 | .880 |
| 2. Stefan Kenic-UTC | Sr | 16 | 61 | 71 | .859 |
| 3. Jake Stephens-VMI | Jr | 15 | 60 | 71 | .845 |
| 4. Malachi Smith-UTC | So | 16 | 57 | 68 | .838 |
| 5. Neftali Alvarez-MER | So | 11 | 41 | 50 | .820 |
| 6. Matt Halvorsen-WCU | Sr | 13 | 37 | 46 | .804 |
| 7. Hayden Brown-CIT | Jr | 11 | 61 | 77 | .792 |
| 8. Mike Bothwell-FUR | Jr | 14 | 49 | 62 | .790 |
| 9. Mason Faulkner-WCU | Sr | 11 | 56 | 72 | .778 |
| 10. Xavier Cork-WCU | So | 13 | 39 | 51 | .765 |
| 11. Jalen Slawson-FUR | Jr | 14 | 41 | 55 | .745 |
| 12. Noah Gurley-FUR | Jr | 14 | 38 | 51 | .745 |
| 13. David Sloan-ETSU | Sr | 12 | 32 | 43 | .744 |
| 14. Isaiah Miller-UNCG | Sr | 13 | 37 | 56 | .661 |

| STEALS | | | | |
|----------------------------|----|----|-----|-------|
| | Cl | G | No. | Avg/G |
| 1. Isaiah Miller-UNCG | Sr | 13 | 29 | 2.2 |
| 2. Mike Bothwell-FUR | Jr | 14 | 29 | 2.1 |
| 3. Ledarrius Brewer-ETSU | Jr | 12 | 22 | 1.8 |
| 4. David Jean-Baptiste-UTC | Sr | 12 | 20 | 1.7 |
| 5. A.J. Caldwell-UTC | Jr | 16 | 23 | 1.4 |
| 6. Jalen Slawson-FUR | Jr | 14 | 20 | 1.4 |
| A.J. Staton-McCray-SAM | Fr | 14 | 20 | 1.4 |
| 8. Serrel Smith Jr.-ETSU | Jr | 13 | 18 | 1.4 |
| 9. Mason Faulkner-WCU | Sr | 11 | 15 | 1.4 |
| Neftali Alvarez-MER | So | 11 | 15 | 1.4 |
| 11. Alex Hunter-FUR | Sr | 14 | 19 | 1.4 |
| 12. Kaleb Hunter-UNCG | Jr | 12 | 16 | 1.3 |
| Ryan Larson-WOF | Jr | 9 | 12 | 1.3 |
| 14. Malachi Smith-UTC | So | 16 | 21 | 1.3 |
| 15. Leon Ayers III-MER | Jr | 13 | 16 | 1.2 |

| 3-POINT FG PCT | | | | | |
|-----------------------------|----|----|-----|-----|------|
| | Cl | G | 3FG | FGA | Pct. |
| 1. Greg Parham-VMI | Sr | 15 | 47 | 91 | .516 |
| 2. Ross Cummings-MER | Sr | 13 | 40 | 90 | .444 |
| 3. Matt Halvorsen-WCU | Sr | 13 | 52 | 118 | .441 |
| 4. Kamdyn Curfman-VMI | So | 15 | 41 | 94 | .436 |
| 5. A.J. Caldwell-UTC | Jr | 16 | 27 | 62 | .435 |
| 6. Sean Conway-VMI | So | 15 | 31 | 73 | .425 |
| 7. Storm Murphy-WOF | Sr | 12 | 37 | 88 | .420 |
| 8. Kaiden Rice-CIT | Sr | 12 | 58 | 138 | .420 |
| 9. Fletcher Abee-CIT | So | 12 | 33 | 82 | .402 |
| 10. Hayden Brown-CIT | Jr | 11 | 21 | 53 | .396 |
| 11. David Jean-Baptiste-UTC | Sr | 12 | 32 | 82 | .390 |
| 12. Ledarrius Brewer-ETSU | Jr | 12 | 28 | 73 | .384 |
| 13. Alex Hunter-FUR | Sr | 14 | 32 | 84 | .381 |
| 14. Tray Hollowell-WOF | Sr | 12 | 35 | 93 | .376 |
| 15. Morgan Safford-WOF | Fr | 12 | 21 | 56 | .375 |

| 3-POINT FG MADE | | | | |
|----------------------------|----|----|-----|-------|
| | Cl | G | 3FG | Avg/G |
| 1. Kaiden Rice-CIT | Sr | 12 | 58 | 4.8 |
| 2. Matt Halvorsen-WCU | Sr | 13 | 52 | 4.0 |
| 3. Greg Parham-VMI | Sr | 15 | 47 | 3.1 |
| 4. Storm Murphy-WOF | Sr | 12 | 37 | 3.1 |
| 5. Ross Cummings-MER | Sr | 13 | 40 | 3.1 |
| 6. Tray Hollowell-WOF | Sr | 12 | 35 | 2.9 |
| 7. Fletcher Abee-CIT | So | 12 | 33 | 2.8 |
| 8. Kamdyn Curfman-VMI | So | 15 | 41 | 2.7 |
| 9. David Jean-Baptiste-UTC | Sr | 12 | 32 | 2.7 |
| 10. Ledarrius Brewer-ETSU | Jr | 12 | 28 | 2.3 |
| 11. Alex Hunter-FUR | Sr | 14 | 32 | 2.3 |
| 12. Clay Mounce-FUR | Sr | 14 | 29 | 2.1 |
| 13. Sean Conway-VMI | So | 15 | 31 | 2.1 |
| 14. Hayden Brown-CIT | Jr | 11 | 21 | 1.9 |
| 15. Morgan Safford-WOF | Fr | 12 | 21 | 1.8 |
| A.J. McGinnis-UNCG | Fr | 12 | 21 | 1.8 |

| BLOCKED SHOTS | | | | |
|---------------------------|----|----|-----|-------|
| | Cl | G | No. | Avg/G |
| 1. Hayden Koval-UNCG | Sr | 14 | 40 | 2.9 |
| 2. Maciej Bender-MER | Sr | 13 | 24 | 1.8 |
| 3. Stephen Clark-CIT | So | 12 | 22 | 1.8 |
| 4. Jake Stephens-VMI | Jr | 15 | 27 | 1.8 |
| 5. Xavier Cork-WCU | So | 13 | 23 | 1.8 |
| 6. Jalen Slawson-FUR | Jr | 14 | 17 | 1.2 |
| 7. Noah Gurley-FUR | Jr | 14 | 15 | 1.1 |
| 8. Jacob Tryon-SAM | Sr | 14 | 14 | 1.0 |
| 9. Tyler Harris-WCU | So | 13 | 12 | 0.9 |
| 10. Brady Spence-CIT | So | 12 | 11 | 0.9 |
| 11. Silas Adheke-ETSU | Sr | 13 | 10 | 0.8 |
| 12. Ledarrius Brewer-ETSU | Jr | 12 | 9 | 0.8 |
| 13. Sam Godwin-WOF | Fr | 12 | 8 | 0.7 |
| Messiah Jones-WOF | So | 9 | 6 | 0.7 |
| 15. Myles Lewis-VMI | Sr | 12 | 7 | 0.6 |

| ASSIST/TURNOVER RATIO | | | | | |
|---------------------------|----|----|------|-----|-------|
| | Cl | G | Ast. | T/O | Ratio |
| 1. Jeff Gary-MER | Jr | 13 | 50 | 17 | 2.9 |
| 2. Alex Hunter-FUR | Sr | 14 | 50 | 19 | 2.6 |
| 3. Ryan Larson-WOF | Jr | 9 | 32 | 17 | 1.9 |
| 4. Tyler Moffe-CIT | Sr | 9 | 48 | 26 | 1.8 |
| 5. Greg Parham-VMI | Sr | 15 | 58 | 32 | 1.8 |
| 6. Felipe Haase-MER | Jr | 13 | 45 | 27 | 1.7 |
| 7. Mike Bothwell-FUR | Jr | 14 | 51 | 31 | 1.6 |
| 8. Neftali Alvarez-MER | So | 11 | 57 | 36 | 1.6 |
| 9. Keyshaun Langley-UNCG | So | 14 | 49 | 31 | 1.6 |
| 10. Richardson Maitre-SAM | Sr | 14 | 47 | 30 | 1.6 |
| 11. Storm Murphy-WOF | Sr | 12 | 57 | 37 | 1.5 |
| 12. Jalen Slawson-FUR | Jr | 14 | 42 | 31 | 1.4 |
| 13. David Sloan-ETSU | Sr | 12 | 50 | 37 | 1.4 |
| 14. Jake Stephens-VMI | Jr | 15 | 47 | 38 | 1.2 |
| 15. Mason Faulkner-WCU | Sr | 11 | 49 | 40 | 1.2 |

2020-21 Southern Conference
INDIVIDUAL BASKETBALL STATISTICS
Through games of Jan 22, 2021 (All games)

| OFFENSIVE REBOUNDS | Cl | G | No. | Avg/G |
|-----------------------------|----|----|-----|-------|
| 1. Messiah Jones-WOF | So | 9 | 28 | 3.1 |
| 2. Sam Godwin-WOF | Fr | 12 | 35 | 2.9 |
| 3. Mohammed Abdulsalam-UNCG | Jr | 14 | 40 | 2.9 |
| 4. Kaleb Hunter-UNCG | Jr | 12 | 29 | 2.4 |
| 5. Xavier Cork-WCU | So | 13 | 30 | 2.3 |
| 6. Clay Mounce-FUR | Sr | 14 | 32 | 2.3 |
| 7. Silas Adheke-ETSU | Sr | 13 | 28 | 2.2 |
| 8. Hayden Brown-CIT | Jr | 11 | 22 | 2.0 |
| 9. Felipe Haase-MER | Jr | 13 | 24 | 1.8 |
| 10. Myles Lewis-VMI | Sr | 12 | 22 | 1.8 |
| 11. Maciej Bender-MER | Sr | 13 | 23 | 1.8 |
| 12. Khyre Thompson-UNCG | So | 14 | 24 | 1.7 |
| 13. Malachi Smith-UTC | So | 16 | 26 | 1.6 |
| 14. Brady Spence-CIT | So | 12 | 19 | 1.6 |
| 15. Logan Dye-SAM | Jr | 14 | 21 | 1.5 |
| Angelo Allegri-UNCG | Jr | 14 | 21 | 1.5 |

| DEFENSIVE REBOUNDS | Cl | G | No. | Avg/G |
|------------------------------|----|----|-----|-------|
| 1. Malachi Smith-UTC | So | 16 | 130 | 8.1 |
| 2. Hayden Brown-CIT | Jr | 11 | 88 | 8.0 |
| 3. Felipe Haase-MER | Jr | 13 | 94 | 7.2 |
| 4. Jake Stephens-VMI | Jr | 15 | 97 | 6.5 |
| 5. Isaiah Miller-UNCG | Sr | 13 | 74 | 5.7 |
| Damari Monsanto-ETSU | Fr | 13 | 74 | 5.7 |
| 7. Myles Lewis-VMI | Sr | 12 | 60 | 5.0 |
| 8. Ryan Larson-WOF | Jr | 9 | 44 | 4.9 |
| 9. Ledarrius Brewer-ETSU | Jr | 12 | 56 | 4.7 |
| 10. Mason Faulkner-WCU | Sr | 11 | 51 | 4.6 |
| 11. A.J. Caldwell-UTC | Jr | 16 | 71 | 4.4 |
| 12. Tyler Harris-WCU | So | 13 | 57 | 4.4 |
| 13. Jalen Slawson-FUR | Jr | 14 | 61 | 4.4 |
| 14. Silas Adheke-ETSU | Sr | 13 | 55 | 4.2 |
| 15. Mohammed Abdulsalam-UNCG | Jr | 14 | 57 | 4.1 |
| Noah Gurley-FUR | Jr | 14 | 57 | 4.1 |

| MINUTES PLAYED | Cl | G | No. | Avg/G |
|-----------------------|----|----|-----|-------|
| 1. Matt Halvorsen-WCU | Sr | 13 | 495 | 38.1 |
| 2. Mason Faulkner-WCU | Sr | 11 | 402 | 36.5 |
| 3. Malachi Smith-UTC | So | 16 | 574 | 35.9 |
| 4. Storm Murphy-WOF | Sr | 12 | 412 | 34.3 |
| 5. A.J. Caldwell-UTC | Jr | 16 | 526 | 32.9 |
| 6. Tray Hollowell-WOF | Sr | 12 | 393 | 32.8 |
| 7. Jeff Gary-MER | Jr | 13 | 423 | 32.5 |
| 8. Kamdyn Curfman-VMI | So | 15 | 487 | 32.5 |
| 9. Kaiden Rice-CIT | Sr | 12 | 389 | 32.4 |
| 10. Greg Parham-VMI | Sr | 15 | 479 | 31.9 |

2020-21 Southern Conference
Conference Team Highs
Through games of Jan 22, 2021 (All games)

TEAM HIGHS (highest totals made by)

| | | |
|-----------------------|--------------|---|
| Points | 133 | Samford vs Belhaven (12/21/20) |
| | 118 | Furman vs South Carolina State (12/21/20) |
| | 111 | Wofford vs Carver (11/28/20) |
| | 110 | VMI vs The Citadel (01/16/21) |
| | 106 | VMI vs Camp. Harrodsburg (12/15/20) |
| Margin | 74 (111-37) | Wofford vs Carver (11/28/20) |
| | 66 (118-52) | Furman vs South Carolina State (12/21/20) |
| | 51 (102-51) | The Citadel vs Carver (12/09/20) |
| | 49 (133-84) | Samford vs Belhaven (12/21/20) |
| | 42 (100-58) | The Citadel vs Toccoa Falls (12/05/20) |
| | 42 (96-54) | ETSU vs Columbia Int'l (12/17/20) |
| Field goals made | 48 | Wofford vs Carver (11/28/20) |
| | 47 | Samford vs Belhaven (12/21/20) |
| | 42 | Furman vs South Carolina State (12/21/20) |
| | 41 | VMI vs Camp. Harrodsburg (12/15/20) |
| | 39 | Western Carolina at North Carolina A&T (12/12/20) |
| Field goal attempts | 85 | UNCG at North Carolina A&T (12/22/20) |
| | 82 | UNCG at Coppin State (12/10/20) |
| | 77 | Chattanooga vs Lander (11/25/20) |
| | 75 | The Citadel vs Carver (12/09/20) |
| | 73 | The Citadel at VMI (01/16/21) |
| | 73 | UNCG vs The Citadel (01/18/21) |
| Field goal percentage | .700 (42-60) | Furman vs South Carolina State (12/21/20) |
| | .667 (48-72) | Wofford vs Carver (11/28/20) |
| | .653 (47-72) | Samford vs Belhaven (12/21/20) |
| | .633 (31-49) | Wofford vs Samford (01/02/21) |
| | .625 (30-48) | Western Carolina vs Newberry (12/03/20) |
| 3-Pt FG made | 22 | Samford vs Belhaven (12/21/20) |
| | 21 | VMI vs Camp. Harrodsburg (12/15/20) |
| | 21 | Furman vs South Carolina State (12/21/20) |
| | 18 | The Citadel vs Piedmont (11/25/20) |
| | 18 | The Citadel vs Columbia Int'l (12/07/20) |
| 3-Pt FG attempts | 42 | VMI vs Camp. Harrodsburg (12/15/20) |
| | 40 | Samford vs Belhaven (12/21/20) |
| | 39 | The Citadel vs Piedmont (11/25/20) |
| | 39 | Western Carolina vs Piedmont (11/30/20) |
| | 39 | Wofford vs USF (12/12/20) |
| | 39 | VMI at Samford (12/30/20) |
| | 39 | Furman at VMI (01/20/21) |
| 3-Pt percentage | .600 (21-35) | Furman vs South Carolina State (12/21/20) |
| | .588 (10-17) | VMI vs Chattanooga (01/02/21) |
| | .571 (16-28) | Wofford vs Samford (01/02/21) |
| | .563 (18-32) | The Citadel vs Columbia Int'l (12/07/20) |
| | .550 (22-40) | Samford vs Belhaven (12/21/20) |
| Free throws made | .550 (11-20) | Western Carolina vs Newberry (12/03/20) |
| | 30 | The Citadel at Longwood (12/19/20) |
| | 30 | Western Carolina at Mercer (01/16/21) |
| | 27 | Furman vs USC Upstate (11/28/20) |
| | 26 | Chattanooga at Tennessee State (12/22/20) |
| Free throw attempts | 26 | VMI vs The Citadel (01/16/21) |
| | 38 | The Citadel at Longwood (12/19/20) |
| | 36 | Western Carolina at Mercer (01/16/21) |
| | 35 | Western Carolina at Col. of Charleston (12/18/20) |
| | 34 | Furman vs USC Upstate (11/28/20) |

| | | |
|-----------------------|--------------|--|
| | 34 | Furman at Winthrop (12/19/20) |
| Free throw percentage | .944 (17-18) | Mercer at Georgia Tech (11/27/20) |
| | .944 (17-18) | VMI at George Mason (12/21/20) |
| | .944 (17-18) | Chattanooga at The Citadel (01/09/21) |
| | .909 (20-22) | Chattanooga vs Mercer (01/13/21) |
| | .909 (10-11) | Chattanooga at Bellarmine (12/09/20) |
| | .909 (10-11) | Western Carolina at VCU (12/15/20) |
| Rebounds | 63 | UNCG at North Carolina A&T (12/22/20) |
| | 58 | The Citadel vs Carver (12/09/20) |
| | 55 | Furman vs Southern Wesleyan (12/02/20) |
| | 54 | Wofford vs Carver (11/28/20) |
| | 52 | Chattanooga vs Lander (11/25/20) |
| | 52 | The Citadel vs Columbia Int'l (12/07/20) |
| | 52 | UNCG at Coppin State (12/10/20) |
| Assists | 36 | Samford vs Belhaven (12/21/20) |
| | 33 | VMI vs Camp. Harrodsburg (12/15/20) |
| | 33 | Furman vs South Carolina State (12/21/20) |
| | 26 | The Citadel vs Toccoa Falls (12/05/20) |
| | 26 | VMI vs Greensboro (12/08/20) |
| Steals | 17 | The Citadel vs Toccoa Falls (12/05/20) |
| | 15 | VMI vs St. Andrews (11/25/20) |
| | 14 | Wofford vs Carver (11/28/20) |
| | 14 | Furman vs Mercer (01/02/21) |
| | 13 | Chattanooga at Tennessee Tech (11/30/20) |
| | 13 | Furman vs Southern Wesleyan (12/02/20) |
| | 13 | ETSU vs Western Carolina (12/30/20) |
| | 13 | Furman at The Citadel (01/13/21) |
| | 13 | Samford vs Western Carolina (01/18/21) |
| Blocked shots | 8 | The Citadel vs Furman (01/13/21) |
| | 7 | The Citadel vs Piedmont (11/25/20) |
| | 7 | UNCG vs Little Rock (11/27/20) |
| | 7 | UNCG vs Duquesne (12/02/20) |
| | 7 | The Citadel vs North Carolina A&T (12/03/20) |
| | 7 | Western Carolina vs Newberry (12/03/20) |
| | 7 | Mercer vs Southern Wesleyan (12/06/20) |
| | 7 | The Citadel vs Presbyterian (12/22/20) |
| | 7 | VMI at Samford (12/30/20) |
| | 7 | The Citadel vs Chattanooga (01/09/21) |
| | 7 | UNCG vs The Citadel (01/18/21) |
| Turnovers | 25 | VMI at Penn State (11/28/20) |
| | 23 | ETSU vs Abilene Christian (11/25/20) |
| | 23 | Furman at Winthrop (12/19/20) |
| | 22 | Mercer at Georgia Southern (12/13/20) |
| | 22 | Wofford vs Samford (01/02/21) |
| Fouls | 30 | Samford at Belmont (12/05/20) |
| | 30 | Samford at Troy (12/16/20) |
| | 29 | Mercer vs Western Carolina (01/16/21) |
| | 28 | UNCG vs Winthrop (12/01/20) |
| | 27 | The Citadel at Longwood (12/19/20) |

2020-21 Southern Conference
Conference Individual Highs
Through games of Jan 22, 2021 (All games)

INDIVIDUAL PLAYER GAME HIGHS

| | | | |
|-----------------------|-------|---------|--|
| Points | 37 | | Hayden Brown (The Citadel) vs Chattanooga (01/09/21) |
| | 33 | | Jake Stephens (VMI) vs The Citadel (01/16/21) |
| | 32 | | Mike Bothwell (Furman) vs ETSU (01/16/21) |
| | 31 | | Hayden Brown (The Citadel) vs Columbia Int'l (12/07/20) |
| | 30 | | Isaiah Miller (UNCG) vs The Citadel (01/18/21) |
| Field goals made | 15 | | Isaiah Miller (UNCG) vs The Citadel (01/18/21) |
| | 13 | | Hayden Brown (The Citadel) vs Columbia Int'l (12/07/20) |
| | 12 | | Jake Stephens (VMI) vs The Citadel (01/16/21) |
| | 11 | | Isaiah Miller (UNCG) vs Duquesne (12/02/20) |
| | 11 | | Isaiah Miller (UNCG) at Coppin State (12/10/20) |
| Field goal attempts | 11 | | Mike Bothwell (Furman) vs ETSU (01/16/21) |
| | 25 | | Isaiah Miller (UNCG) at Coppin State (12/10/20) |
| | 25 | | Isaiah Miller (UNCG) vs The Citadel (01/18/21) |
| | 22 | | Jake Stephens (VMI) vs The Citadel (01/16/21) |
| | 21 | | Hayden Brown (The Citadel) vs Columbia Int'l (12/07/20) |
| Field goal percentage | 21 | | Malachi Smith (Chattanooga) vs North Georgia (12/12/20) |
| | 21 | | Tray Hollowell (Wofford) vs USF (12/12/20) |
| | 21 | | Noah Gurley (Furman) at The Citadel (01/13/21) |
| | 1.000 | (9-9) | Maciej Bender (Mercer) vs Columbia Int'l (12/05/20) |
| | 1.000 | (8-8) | Garrett Hien (Furman) vs Tusculum (11/25/20) |
| 3-Pt FG made | .889 | (8-9) | Logan Dye (Samford) vs Alabama A&M (11/29/20) |
| | .833 | (10-12) | Xavier Cork (Western Carolina) at North Carolina A&T (12/12/20) |
| | .833 | (10-12) | Clay Mounce (Furman) at The Citadel (01/13/21) |
| | 9 | | Kaiden Rice (The Citadel) vs Piedmont (11/25/20) |
| | 7 | | Matt Halvorsen (Western Carolina) at North Carolina A&T (12/12/20) |
| 3-Pt FG attempts | 7 | | Hayden Brown (The Citadel) vs Chattanooga (01/09/21) |
| | 7 | | Greg Parham (VMI) vs Wofford (01/13/21) |
| | 7 | | Kaiden Rice (The Citadel) at VMI (01/16/21) |
| | 7 | | Sean Conway (VMI) vs The Citadel (01/16/21) |
| | 18 | | Kaiden Rice (The Citadel) vs Piedmont (11/25/20) |
| 3-Pt percentage | 16 | | Kaiden Rice (The Citadel) vs North Carolina A&T (12/03/20) |
| | 15 | | Tray Hollowell (Wofford) vs USF (12/12/20) |
| | 14 | | Kaiden Rice (The Citadel) at UNCG (01/18/21) |
| | 13 | | Matt Halvorsen (Western Carolina) at UNC Asheville (11/28/20) |
| | 13 | | Greg Parham (VMI) at Samford (12/30/20) |
| Free throws made | 1.000 | (5-5) | Tray Hollowell (Wofford) at VMI (01/13/21) |
| | .875 | (7-8) | Greg Parham (VMI) vs Wofford (01/13/21) |
| | .833 | (5-6) | Jaylon Pugh (Furman) vs Flagler (12/12/20) |
| | .833 | (5-6) | Jonny Lawrence (Furman) vs South Carolina State (12/21/20) |
| | .833 | (5-6) | A.J. Staton-McCray (Samford) vs Belhaven (12/21/20) |
| Free throw attempts | 16 | | Mason Faulkner (Western Carolina) at Mercer (01/16/21) |
| | 11 | | Hayden Brown (The Citadel) at Longwood (12/19/20) |
| | 11 | | Stefan Kenic (Chattanooga) at Tennessee State (12/22/20) |
| | 10 | | Neftali Alvarez (Mercer) at Georgia Tech (11/27/20) |
| | 10 | | Jake Stephens (VMI) at Gardner-Webb (12/18/20) |
| | 10 | | Jake Stephens (VMI) at George Mason (12/21/20) |
| | 10 | | Malachi Smith (Chattanooga) at Tennessee State (12/22/20) |
| | 10 | | Hayden Brown (The Citadel) vs Chattanooga (01/09/21) |
| | 10 | | Neftali Alvarez (Mercer) vs Western Carolina (01/16/21) |
| | 10 | | Xavier Cork (Western Carolina) at Samford (01/18/21) |
| | 18 | | Mason Faulkner (Western Carolina) at Mercer (01/16/21) |
| | 14 | | Isaiah Miller (UNCG) at Samford (01/14/21) |
| | 13 | | Stefan Kenic (Chattanooga) at Tennessee State (12/22/20) |
| | 13 | | Neftali Alvarez (Mercer) vs Western Carolina (01/16/21) |
| | 12 | | Hayden Brown (The Citadel) at Longwood (12/19/20) |

| | | |
|-----------------------|---------------|--|
| | 12 | Hayden Brown (The Citadel) vs Chattanooga (01/09/21) |
| Free throw percentage | 1.000 (10-10) | Jake Stephens (VMI) at George Mason (12/21/20) |
| | 1.000 (9-9) | Mike Bothwell (Furman) vs USC Upstate (11/28/20) |
| | 1.000 (9-9) | Matt Halvorsen (Western Carolina) at UNC Asheville (11/28/20) |
| | 1.000 (9-9) | Cory Hightower (Western Carolina) at Col. of Charleston (12/18/20) |
| | 1.000 (8-8) | Stefan Kenic (Chattanooga) at UAB (12/19/20) |
| | 1.000 (8-8) | Storm Murphy (Wofford) vs Samford (01/02/21) |
| Rebounds | 21 | Hayden Brown (The Citadel) vs Columbia Int'l (12/07/20) |
| | 16 | Hayden Brown (The Citadel) vs Piedmont (11/25/20) |
| | 16 | Felipe Haase (Mercer) at Georgia Southern (12/13/20) |
| | 15 | Felipe Haase (Mercer) vs North Georgia (11/25/20) |
| | 14 | Malachi Smith (Chattanooga) at Tennessee Tech (11/30/20) |
| | 14 | Stephen Clark (The Citadel) vs Carver (12/09/20) |
| | 14 | Xavier Cork (Western Carolina) at North Carolina A&T (12/12/20) |
| | 14 | Damari Monsanto (ETSU) vs VMI (01/18/21) |
| | 14 | Jalen Slawson (Furman) at VMI (01/20/21) |
| | 14 | Jake Stephens (VMI) vs Furman (01/20/21) |
| Assists | 11 | Tyler Moffe (The Citadel) vs Presbyterian (12/22/20) |
| | 11 | Storm Murphy (Wofford) vs Samford (01/02/21) |
| | 9 | Neftali Alvarez (Mercer) at Georgia Tech (11/27/20) |
| | 9 | Jalen Slawson (Furman) at Col. of Charleston (12/05/20) |
| | 9 | Keyshaun Langley (UNCG) at North Carolina A&T (12/22/20) |
| Steals | 7 | Ledarius Brewer (ETSU) vs Western Carolina (12/30/20) |
| | 6 | Mike Bothwell (Furman) vs Mercer (01/02/21) |
| | 5 | Isaiah Miller (UNCG) vs Little Rock (11/27/20) |
| | 5 | Malachi Smith (Chattanooga) at Tennessee Tech (11/30/20) |
| | 5 | Brent Davis (The Citadel) vs Toccoa Falls (12/05/20) |
| | 5 | A.J. Caldwell (Chattanooga) at Middle Tennessee (12/07/20) |
| | 5 | Serrel Smith Jr. (ETSU) vs Lee (12/19/20) |
| | 5 | Jalen Slawson (Furman) at VMI (01/20/21) |
| Blocked shots | 7 | Hayden Koval (UNCG) vs Little Rock (11/27/20) |
| | 6 | Hayden Koval (UNCG) at North Carolina A&T (12/22/20) |
| | 5 | Stephen Clark (The Citadel) vs North Carolina A&T (12/03/20) |
| | 5 | Xavier Cork (Western Carolina) vs Newberry (12/03/20) |
| | 5 | Jake Stephens (VMI) at Samford (12/30/20) |
| | 5 | Stephen Clark (The Citadel) vs Chattanooga (01/09/21) |
| | 5 | Stephen Clark (The Citadel) vs Furman (01/13/21) |
| Turnovers | 8 | David Sloan (ETSU) at Alabama (12/22/20) |
| | 7 | Neftali Alvarez (Mercer) vs North Georgia (11/25/20) |
| | 7 | Messiah Jones (Wofford) at Richmond (12/07/20) |
| | 7 | Storm Murphy (Wofford) vs UNCG (01/06/21) |
| | 6 | Noah Gurley (Furman) vs USC Upstate (11/28/20) |
| | 6 | Neftali Alvarez (Mercer) vs Southern Wesleyan (12/06/20) |
| | 6 | Malachi Smith (Chattanooga) at Bellarmine (12/09/20) |
| | 6 | Felipe Haase (Mercer) at Georgia Southern (12/13/20) |
| | 6 | Myles Lewis (VMI) vs Hampton (12/13/20) |
| | 6 | Storm Murphy (Wofford) at Texas A&M (12/21/20) |
| | 6 | Cory Hightower (Western Carolina) at ETSU (12/30/20) |
| | 6 | Leon Ayers III (Mercer) at Furman (01/02/21) |
| | 6 | Ledarius Brewer (ETSU) at UNCG (01/02/21) |
| | 6 | Isaiah Miller (UNCG) vs Wofford (01/09/21) |

2020-21 Southern Conference
CONFERENCE BASKETBALL STATISTICS
Through games of Jan 22, 2021 (Conference games only)

| SCORING OFFENSE | G | W-L | Pts | Avg/G |
|----------------------|---|-----|-----|-------|
| 1. The Citadel | 5 | 1-4 | 419 | 83.8 |
| 2. VMI | 6 | 3-3 | 498 | 83.0 |
| 3. Furman | 5 | 4-1 | 405 | 81.0 |
| 4. Mercer | 5 | 2-3 | 386 | 77.2 |
| 5. Wofford | 6 | 5-1 | 452 | 75.3 |
| 6. Chattanooga | 7 | 3-4 | 524 | 74.9 |
| 7. ETSU | 5 | 4-1 | 374 | 74.8 |
| 8. UNCG | 6 | 4-2 | 446 | 74.3 |
| 9. Samford | 7 | 2-5 | 515 | 73.6 |
| 10. Western Carolina | 4 | 0-4 | 280 | 70.0 |

| SCORING DEFENSE | G | Pts | Avg/G |
|---------------------|---|-----|-------|
| 1. UNCG | 6 | 400 | 66.7 |
| 2. Wofford | 6 | 415 | 69.2 |
| 3. ETSU | 5 | 346 | 69.2 |
| 4. Furman | 5 | 381 | 76.2 |
| 5. Western Carolina | 4 | 305 | 76.2 |
| 6. Mercer | 5 | 383 | 76.6 |
| 7. Chattanooga | 7 | 542 | 77.4 |
| 8. Samford | 7 | 555 | 79.3 |
| 9. VMI | 6 | 511 | 85.2 |
| 10. The Citadel | 5 | 461 | 92.2 |

| SCORING MARGIN | G | Offense | Defense | Margin |
|---------------------|---|---------|---------|--------|
| 1. UNCG | 6 | 74.3 | 66.7 | +7.7 |
| 2. Wofford | 6 | 75.3 | 69.2 | +6.2 |
| 3. ETSU | 5 | 74.8 | 69.2 | +5.6 |
| 4. Furman | 5 | 81.0 | 76.2 | +4.8 |
| 5. Mercer | 5 | 77.2 | 76.6 | +0.6 |
| 6. VMI | 6 | 83.0 | 85.2 | -2.2 |
| 7. Chattanooga | 7 | 74.9 | 77.4 | -2.6 |
| 8. Samford | 7 | 73.6 | 79.3 | -5.7 |
| 9. Western Carolina | 4 | 70.0 | 76.2 | -6.2 |
| 10. The Citadel | 5 | 83.8 | 92.2 | -8.4 |

| FREE THROW PCT | G | FTM | FTA | Pct. |
|---------------------|---|-----|-----|------|
| 1. Chattanooga | 7 | 91 | 109 | .835 |
| 2. VMI | 6 | 99 | 128 | .773 |
| 3. Western Carolina | 4 | 76 | 100 | .760 |
| 4. Wofford | 6 | 71 | 95 | .747 |
| 5. The Citadel | 5 | 83 | 112 | .741 |
| 6. Furman | 5 | 57 | 77 | .740 |
| 7. Mercer | 5 | 53 | 76 | .697 |
| 8. Samford | 7 | 81 | 120 | .675 |
| 9. UNCG | 6 | 71 | 106 | .670 |
| 10. ETSU | 5 | 59 | 90 | .656 |

| FIELD GOAL PERCENTAGE | G | FGM | FGA | Pct. |
|-----------------------|---|-----|-----|------|
| 1. Mercer | 5 | 148 | 302 | .490 |
| 2. Furman | 5 | 153 | 315 | .486 |
| 3. VMI | 6 | 165 | 348 | .474 |
| 4. ETSU | 5 | 137 | 289 | .474 |
| 5. Wofford | 6 | 158 | 340 | .465 |
| 6. Chattanooga | 7 | 187 | 421 | .444 |
| 7. Samford | 7 | 192 | 433 | .443 |
| 8. The Citadel | 5 | 139 | 318 | .437 |
| 9. UNCG | 6 | 163 | 377 | .432 |
| 10. Western Carolina | 4 | 87 | 211 | .412 |

| FIELD GOAL PCT DEFENSE | G | FGM | FGA | Pct. |
|------------------------|---|-----|-----|------|
| 1. UNCG | 6 | 138 | 349 | .395 |
| 2. ETSU | 5 | 116 | 275 | .422 |
| 3. Wofford | 6 | 156 | 360 | .433 |
| 4. Mercer | 5 | 131 | 299 | .438 |
| 5. Western Carolina | 4 | 107 | 235 | .455 |
| 6. Samford | 7 | 187 | 404 | .463 |
| 7. VMI | 6 | 185 | 395 | .468 |
| 8. Furman | 5 | 136 | 282 | .482 |
| 9. Chattanooga | 7 | 195 | 404 | .483 |
| 10. The Citadel | 5 | 178 | 351 | .507 |

| 3-POINT FG PCT | G | 3FGM | 3FGA | Pct. |
|----------------------|---|------|------|------|
| 1. VMI | 6 | 69 | 163 | .423 |
| 2. Wofford | 6 | 65 | 168 | .387 |
| 3. ETSU | 5 | 41 | 107 | .383 |
| 4. The Citadel | 5 | 58 | 153 | .379 |
| 5. Chattanooga | 7 | 59 | 159 | .371 |
| 6. Furman | 5 | 42 | 127 | .331 |
| 7. UNCG | 6 | 49 | 156 | .314 |
| 8. Mercer | 5 | 37 | 118 | .314 |
| 9. Samford | 7 | 50 | 164 | .305 |
| 10. Western Carolina | 4 | 30 | 99 | .303 |

| 3-POINT FG PCT DEFENSE | G | 3FGM | 3FGA | Pct. |
|------------------------|---|------|------|------|
| 1. UNCG | 6 | 45 | 160 | .281 |
| 2. Western Carolina | 4 | 25 | 82 | .305 |
| 3. ETSU | 5 | 40 | 126 | .317 |
| 4. Wofford | 6 | 49 | 151 | .325 |
| 5. Mercer | 5 | 42 | 120 | .350 |
| 6. The Citadel | 5 | 41 | 116 | .353 |
| 7. Chattanooga | 7 | 61 | 164 | .372 |
| 8. Furman | 5 | 47 | 123 | .382 |
| 9. Samford | 7 | 77 | 198 | .389 |
| 10. VMI | 6 | 73 | 174 | .420 |

| REBOUNDING OFFENSE | G | Rebounds | Avg/G |
|---------------------|---|----------|-------|
| 1. UNCG | 6 | 230 | 38.3 |
| 2. Samford | 7 | 264 | 37.7 |
| 3. ETSU | 5 | 187 | 37.4 |
| 4. Mercer | 5 | 184 | 36.8 |
| 5. Wofford | 6 | 216 | 36.0 |
| 6. The Citadel | 5 | 179 | 35.8 |
| 7. VMI | 6 | 203 | 33.8 |
| 8. Furman | 5 | 169 | 33.8 |
| 9. Western Carolina | 4 | 131 | 32.8 |
| 10. Chattanooga | 7 | 219 | 31.3 |

| REBOUNDING DEFENSE | G | Rebounds | Avg/G |
|---------------------|---|----------|-------|
| 1. ETSU | 5 | 155 | 31.0 |
| 2. Mercer | 5 | 165 | 33.0 |
| 3. Furman | 5 | 167 | 33.4 |
| 4. Wofford | 6 | 203 | 33.8 |
| 5. Samford | 7 | 242 | 34.6 |
| 6. Chattanooga | 7 | 250 | 35.7 |
| 7. VMI | 6 | 223 | 37.2 |
| 8. Western Carolina | 4 | 149 | 37.2 |
| 9. The Citadel | 5 | 194 | 38.8 |
| 10. UNCG | 6 | 234 | 39.0 |

2020-21 Southern Conference
CONFERENCE BASKETBALL STATISTICS
Through games of Jan 22, 2021 (Conference games only)

| REBOUNDING MARGIN | G | Team | Avg. | Opp. | Avg. | Margin |
|-------------------|------------------|------|------|------|------|-----------|
| 1. | ETSU | 5 | 187 | 37.4 | 155 | 31.0 +6.4 |
| 2. | Mercer | 5 | 184 | 36.8 | 165 | 33.0 +3.8 |
| 3. | Samford | 7 | 264 | 37.7 | 242 | 34.6 +3.1 |
| 4. | Wofford | 6 | 216 | 36.0 | 203 | 33.8 +2.2 |
| 5. | Furman | 5 | 169 | 33.8 | 167 | 33.4 +0.4 |
| 6. | UNCG | 6 | 230 | 38.3 | 234 | 39.0 -0.7 |
| 7. | The Citadel | 5 | 179 | 35.8 | 194 | 38.8 -3.0 |
| 8. | VMI | 6 | 203 | 33.8 | 223 | 37.2 -3.3 |
| 9. | Chattanooga | 7 | 219 | 31.3 | 250 | 35.7 -4.4 |
| 10. | Western Carolina | 4 | 131 | 32.8 | 149 | 37.2 -4.5 |

| BLOCKED SHOTS | G | No. | Avg/G |
|---------------|------------------|-----|--------|
| 1. | UNCG | 6 | 28 4.7 |
| 2. | The Citadel | 5 | 23 4.6 |
| 3. | VMI | 6 | 21 3.5 |
| 4. | Mercer | 5 | 16 3.2 |
| 5. | Furman | 5 | 15 3.0 |
| 6. | Samford | 7 | 18 2.6 |
| 7. | Wofford | 6 | 15 2.5 |
| 8. | ETSU | 5 | 8 1.6 |
| 9. | Western Carolina | 4 | 6 1.5 |
| 10. | Chattanooga | 7 | 9 1.3 |

| ASSISTS | G | No. | Avg/G |
|---------|------------------|-----|----------|
| 1. | Mercer | 5 | 80 16.0 |
| 2. | Furman | 5 | 78 15.6 |
| 3. | VMI | 6 | 92 15.3 |
| 4. | Samford | 7 | 104 14.9 |
| 5. | The Citadel | 5 | 73 14.6 |
| 6. | Wofford | 6 | 87 14.5 |
| 7. | Chattanooga | 7 | 93 13.3 |
| 8. | Western Carolina | 4 | 50 12.5 |
| 9. | ETSU | 5 | 61 12.2 |
| 10. | UNCG | 6 | 69 11.5 |

| STEALS | G | No. | Avg/G |
|--------|------------------|-----|--------|
| 1. | Furman | 5 | 47 9.4 |
| 2. | Samford | 7 | 53 7.6 |
| 3. | UNCG | 6 | 45 7.5 |
| 4. | ETSU | 5 | 36 7.2 |
| 5. | Mercer | 5 | 35 7.0 |
| 6. | Chattanooga | 7 | 42 6.0 |
| 7. | Wofford | 6 | 33 5.5 |
| 8. | VMI | 6 | 30 5.0 |
| | Western Carolina | 4 | 20 5.0 |
| 10. | The Citadel | 5 | 17 3.4 |

| TURNOVER MARGIN | G | Team | Avg. | Opp. | Avg. | Margin |
|-----------------|------------------|------|------|------|------|-----------|
| 1. | UNCG | 6 | 62 | 10.3 | 94 | 15.7 +5.3 |
| 2. | Furman | 5 | 57 | 11.4 | 77 | 15.4 +4.0 |
| 3. | Chattanooga | 7 | 71 | 10.1 | 90 | 12.9 +2.7 |
| 4. | ETSU | 5 | 69 | 13.8 | 65 | 13.0 -0.8 |
| 5. | Samford | 7 | 110 | 15.7 | 101 | 14.4 -1.3 |
| 6. | VMI | 6 | 66 | 11.0 | 58 | 9.7 -1.3 |
| 7. | Mercer | 5 | 64 | 12.8 | 57 | 11.4 -1.4 |
| 8. | Wofford | 6 | 86 | 14.3 | 77 | 12.8 -1.5 |
| 9. | Western Carolina | 4 | 65 | 16.3 | 51 | 12.8 -3.5 |
| 10. | The Citadel | 5 | 66 | 13.2 | 46 | 9.2 -4.0 |

| ASSIST/TURNOVER RATIO | G | Ast. | Avg. | T/O | Avg. | Ratio |
|-----------------------|------------------|------|------|------|------|----------|
| 1. | VMI | 6 | 92 | 15.3 | 66 | 11.0 1.4 |
| 2. | Furman | 5 | 78 | 15.6 | 57 | 11.4 1.4 |
| 3. | Chattanooga | 7 | 93 | 13.3 | 71 | 10.1 1.3 |
| 4. | Mercer | 5 | 80 | 16.0 | 64 | 12.8 1.3 |
| 5. | UNCG | 6 | 69 | 11.5 | 62 | 10.3 1.1 |
| 6. | The Citadel | 5 | 73 | 14.6 | 66 | 13.2 1.1 |
| 7. | Wofford | 6 | 87 | 14.5 | 86 | 14.3 1.0 |
| 8. | Samford | 7 | 104 | 14.9 | 110 | 15.7 0.9 |
| 9. | ETSU | 5 | 61 | 12.2 | 69 | 13.8 0.9 |
| 10. | Western Carolina | 4 | 50 | 12.5 | 65 | 16.3 0.8 |

| OFFENSIVE REBOUNDS | G | No. | Avg/G |
|--------------------|------------------|-----|---------|
| 1. | UNCG | 6 | 75 12.5 |
| 2. | Samford | 7 | 83 11.9 |
| 3. | ETSU | 5 | 58 11.6 |
| 4. | Furman | 5 | 54 10.8 |
| 5. | Wofford | 6 | 63 10.5 |
| 6. | The Citadel | 5 | 46 9.2 |
| 7. | Mercer | 5 | 44 8.8 |
| 8. | Western Carolina | 4 | 30 7.5 |
| 9. | VMI | 6 | 42 7.0 |
| 10. | Chattanooga | 7 | 48 6.9 |

| DEFENSIVE REBOUNDS | G | No. | Avg/G |
|--------------------|------------------|-----|----------|
| 1. | Mercer | 5 | 140 28.0 |
| 2. | VMI | 6 | 161 26.8 |
| 3. | The Citadel | 5 | 133 26.6 |
| 4. | Samford | 7 | 181 25.9 |
| 5. | UNCG | 6 | 155 25.8 |
| 6. | ETSU | 5 | 129 25.8 |
| 7. | Wofford | 6 | 153 25.5 |
| 8. | Western Carolina | 4 | 101 25.3 |
| 9. | Chattanooga | 7 | 171 24.4 |
| 10. | Furman | 5 | 115 23.0 |

| DEFENSIVE REB PCT. | G | D-Reb | Opp. OR | D-Reb% |
|--------------------|------------------|-------|---------|---------|
| 1. | Mercer | 5 | 140 | 43 .765 |
| 2. | Chattanooga | 7 | 171 | 54 .760 |
| 3. | Samford | 7 | 181 | 60 .751 |
| 4. | ETSU | 5 | 129 | 43 .750 |
| 5. | The Citadel | 5 | 133 | 48 .735 |
| 6. | VMI | 6 | 161 | 63 .719 |
| 7. | Western Carolina | 4 | 101 | 40 .716 |
| 8. | Furman | 5 | 115 | 46 .714 |
| 9. | Wofford | 6 | 153 | 67 .695 |
| 10. | UNCG | 6 | 155 | 79 .662 |

| OFFENSIVE REB PCT. | G | O-Reb | Opp. DR | O-Reb% |
|--------------------|------------------|-------|---------|----------|
| 1. | ETSU | 5 | 58 | 112 .341 |
| 2. | UNCG | 6 | 75 | 155 .326 |
| 3. | Wofford | 6 | 63 | 136 .317 |
| 4. | Samford | 7 | 83 | 182 .313 |
| 5. | Furman | 5 | 54 | 121 .309 |
| 6. | Mercer | 5 | 44 | 122 .265 |
| 7. | The Citadel | 5 | 46 | 146 .240 |
| 8. | Western Carolina | 4 | 30 | 109 .216 |
| 9. | VMI | 6 | 42 | 160 .208 |
| 10. | Chattanooga | 7 | 48 | 196 .197 |

2020-21 Southern Conference
CONFERENCE BASKETBALL STATISTICS
Through games of Jan 22, 2021 (Conference games only)

| 3-POINT FG MADE | G | No. | Avg/G |
|---------------------|---|-----|-------|
| 1. The Citadel | 5 | 58 | 11.6 |
| 2. VMI | 6 | 69 | 11.5 |
| 3. Wofford | 6 | 65 | 10.8 |
| 4. Chattanooga | 7 | 59 | 8.4 |
| 5. Furman | 5 | 42 | 8.4 |
| 6. ETSU | 5 | 41 | 8.2 |
| 7. UNCG | 6 | 49 | 8.2 |
| 8. Western Carolina | 4 | 30 | 7.5 |
| 9. Mercer | 5 | 37 | 7.4 |
| 10. Samford | 7 | 50 | 7.1 |

2020-21 Southern Conference
CONFERENCE BASKETBALL STATISTICS
Through games of Jan 22, 2021 (Conference games only)

| Team | Conference | Pct. | PF | PA | Overall | Pct. | PF | PA | Current unbeaten streak |
|------------------|------------|------|------|------|---------|------|------|------|-------------------------|
| Wofford | 5-1 | .833 | 75.3 | 69.2 | 5-1 | .833 | 75.3 | 69.2 | Wofford -- 3 |
| Furman | 4-1 | .800 | 81.0 | 76.2 | 4-1 | .800 | 81.0 | 76.2 | UNCG -- 3 |
| ETSU | 4-1 | .800 | 74.8 | 69.2 | 4-1 | .800 | 74.8 | 69.2 | Mercer -- 2 |
| UNCG | 4-2 | .667 | 74.3 | 66.7 | 4-2 | .667 | 74.3 | 66.7 | ETSU -- 2 |
| VMI | 3-3 | .500 | 83.0 | 85.2 | 3-3 | .500 | 83.0 | 85.2 | VMI -- 1 |
| Chattanooga | 3-4 | .429 | 74.9 | 77.4 | 3-4 | .429 | 74.9 | 77.4 | Chattanooga -- 1 |
| Mercer | 2-3 | .400 | 77.2 | 76.6 | 2-3 | .400 | 77.2 | 76.6 | |
| Samford | 2-5 | .286 | 73.6 | 79.3 | 2-5 | .286 | 73.6 | 79.3 | |
| The Citadel | 1-4 | .200 | 83.8 | 92.2 | 1-4 | .200 | 83.8 | 92.2 | |
| Western Carolina | 0-4 | .000 | 70.0 | 76.2 | 0-4 | .000 | 70.0 | 76.2 | |

| TEAM SUMMARIES | G | PF-PA | Avg score | Margin | FG-FGA | Pct. | 3FG-FGA | Pct. | FT-FTA | Pct. | RebF | RebA | Margin |
|------------------|---|---------|-----------|--------|---------|------|---------|------|--------|------|------|------|--------|
| Chattanooga | 7 | 524-542 | 74.9-77.4 | -2.6 | 187-421 | .444 | 59-159 | .371 | 91-109 | .835 | 219 | 250 | -4.4 |
| ETSU | 5 | 374-346 | 74.8-69.2 | +5.6 | 137-289 | .474 | 41-107 | .383 | 59-90 | .656 | 187 | 155 | +6.4 |
| Furman | 5 | 405-381 | 81.0-76.2 | +4.8 | 153-315 | .486 | 42-127 | .331 | 57-77 | .740 | 169 | 167 | +0.4 |
| Mercer | 5 | 386-383 | 77.2-76.6 | +0.6 | 148-302 | .490 | 37-118 | .314 | 53-76 | .697 | 184 | 165 | +3.8 |
| Samford | 7 | 515-555 | 73.6-79.3 | -5.7 | 192-433 | .443 | 50-164 | .305 | 81-120 | .675 | 264 | 242 | +3.1 |
| The Citadel | 5 | 419-461 | 83.8-92.2 | -8.4 | 139-318 | .437 | 58-153 | .379 | 83-112 | .741 | 179 | 194 | -3.0 |
| UNCG | 6 | 446-400 | 74.3-66.7 | +7.7 | 163-377 | .432 | 49-156 | .314 | 71-106 | .670 | 230 | 234 | -0.7 |
| VMI | 6 | 498-511 | 83.0-85.2 | -2.2 | 165-348 | .474 | 69-163 | .423 | 99-128 | .773 | 203 | 223 | -3.3 |
| Western Carolina | 4 | 280-305 | 70.0-76.2 | -6.2 | 87-211 | .412 | 30-99 | .303 | 76-100 | .760 | 131 | 149 | -4.5 |
| Wofford | 6 | 452-415 | 75.3-69.2 | +6.2 | 158-340 | .465 | 65-168 | .387 | 71-95 | .747 | 216 | 203 | +2.2 |

| ATTENDANCE | Home | Average | Away | Average | Neutral | Average | Total | Average |
|------------------|---------|---------|---------|---------|---------|---------|----------|---------|
| Chattanooga | 4-0 | 0 | 3-1298 | 433 | 0-0 | 0 | 7-1298 | 185 |
| ETSU | 2-1338 | 669 | 3-400 | 133 | 0-0 | 0 | 5-1738 | 348 |
| Furman | 2-500 | 250 | 3-210 | 70 | 0-0 | 0 | 5-710 | 142 |
| Mercer | 2-1973 | 986 | 3-250 | 83 | 0-0 | 0 | 5-2223 | 445 |
| Samford | 5-2230 | 446 | 2-0 | 0 | 0-0 | 0 | 7-2230 | 319 |
| The Citadel | 3-636 | 212 | 2-250 | 125 | 0-0 | 0 | 5-886 | 177 |
| UNCG | 3-210 | 70 | 3-916 | 305 | 0-0 | 0 | 6-1126 | 188 |
| VMI | 4-813 | 203 | 2-1171 | 586 | 0-0 | 0 | 6-1984 | 331 |
| Western Carolina | 1-0 | 0 | 3-1996 | 665 | 0-0 | 0 | 4-1996 | 499 |
| Wofford | 2-0 | 0 | 4-1209 | 302 | 0-0 | 0 | 6-1209 | 202 |
| Totals | 28-7700 | 275 | 28-7700 | 275 | 0-0 | 0 | 56-15400 | 275 |

2020-21 Southern Conference
INDIVIDUAL BASKETBALL STATISTICS
Through games of Jan 22, 2021 (Conference games only)

To be ranked, a player must appear in at least 75.0% of their team's games.

| SCORING | | | | | | | REBOUNDING | | | | | | |
|----------------------------|----|---|----|-----|----|-----------|-----------------------------|----|---|-----|-----|-------|-------|
| | Cl | G | FG | 3FG | FT | Pts Avg/G | | Cl | G | Off | Def | Total | Avg/G |
| 1. Greg Parham-VMI | Sr | 6 | 53 | 23 | 21 | 150 25.0 | 1. Hayden Brown-CIT | Jr | 5 | 9 | 39 | 48 | 9.6 |
| 2. Hayden Brown-CIT | Jr | 5 | 33 | 11 | 32 | 109 21.8 | 2. Jake Stephens-VMI | Jr | 6 | 9 | 47 | 56 | 9.3 |
| 3. Storm Murphy-WOF | Sr | 6 | 40 | 22 | 26 | 128 21.3 | 3. Isaiah Miller-UNCG | Sr | 6 | 10 | 44 | 54 | 9.0 |
| 4. Mike Bothwell-FUR | Jr | 5 | 39 | 6 | 16 | 100 20.0 | 4. Damari Monsanto-ETSU | Fr | 5 | 9 | 34 | 43 | 8.6 |
| 5. Kaiden Rice-CIT | Sr | 5 | 32 | 25 | 9 | 98 19.6 | 5. Malachi Smith-UTC | So | 7 | 11 | 44 | 55 | 7.9 |
| 6. Isaiah Miller-UNCG | Sr | 6 | 48 | 3 | 18 | 117 19.5 | 6. Cory Hightower-WCU | Jr | 4 | 6 | 25 | 31 | 7.8 |
| 7. Ledarius Brewer-ETSU | Jr | 4 | 33 | 11 | 0 | 77 19.3 | 7. Mohammed Abdulsalam-UNCG | Jr | 6 | 21 | 24 | 45 | 7.5 |
| 8. Jake Stephens-VMI | Jr | 6 | 37 | 8 | 28 | 110 18.3 | 8. Felipe Haase-MER | Jr | 5 | 7 | 28 | 35 | 7.0 |
| 9. David Jean-Baptiste-UTC | Sr | 7 | 50 | 18 | 9 | 127 18.1 | 9. Ryan Larson-WOF | Jr | 6 | 5 | 35 | 40 | 6.7 |
| 10. Mason Faulkner-WCU | Sr | 4 | 20 | 5 | 26 | 71 17.8 | 10. Clay Mounce-FUR | Sr | 5 | 12 | 21 | 33 | 6.6 |
| 11. Clay Mounce-FUR | Sr | 5 | 31 | 11 | 7 | 80 16.0 | 11. Ledarius Brewer-ETSU | Jr | 4 | 4 | 22 | 26 | 6.5 |
| 12. Ross Cummings-MER | Sr | 5 | 27 | 16 | 8 | 78 15.6 | 12. Silas Adheke-ETSU | Sr | 5 | 18 | 14 | 32 | 6.4 |
| 13. Malachi Smith-UTC | So | 7 | 37 | 11 | 22 | 107 15.3 | Kaiden Rice-CIT | Sr | 5 | 6 | 26 | 32 | 6.4 |
| 14. Leon Ayers III-MER | Jr | 5 | 31 | 4 | 6 | 72 14.4 | 14. Tyler Harris-WCU | So | 4 | 7 | 18 | 25 | 6.3 |
| 15. Xavier Cork-WCU | So | 4 | 20 | 0 | 16 | 56 14.0 | 15. Jalen Slawson-FUR | Jr | 5 | 10 | 21 | 31 | 6.2 |
| Matt Halvorsen-WCU | Sr | 4 | 16 | 16 | 8 | 56 14.0 | 16. Sean Conway-VMI | So | 6 | 9 | 27 | 36 | 6.0 |
| 17. Maciej Bender-MER | Sr | 5 | 30 | 0 | 8 | 68 13.6 | Maciej Bender-MER | Sr | 5 | 6 | 24 | 30 | 6.0 |
| 18. Stefan Kenic-UTC | Sr | 7 | 30 | 9 | 24 | 93 13.3 | 18. Mike Bothwell-FUR | Jr | 5 | 10 | 18 | 28 | 5.6 |
| 19. Noah Gurley-FUR | Jr | 5 | 26 | 3 | 11 | 66 13.2 | 19. Leon Ayers III-MER | Jr | 5 | 7 | 19 | 26 | 5.2 |
| 20. Trey Bonham-VMI | Fr | 6 | 23 | 10 | 21 | 77 12.8 | 20. Noah Gurley-FUR | Jr | 5 | 6 | 19 | 25 | 5.0 |
| 21. David Sloan-ETSU | Sr | 4 | 18 | 3 | 11 | 50 12.5 | Mason Faulkner-WCU | Sr | 4 | 3 | 17 | 20 | 5.0 |
| 22. Jalen Slawson-FUR | Jr | 5 | 19 | 6 | 16 | 60 12.0 | | | | | | | |
| 23. Ty Brewer-ETSU | Jr | 5 | 20 | 8 | 11 | 59 11.8 | | | | | | | |
| 24. Damari Monsanto-ETSU | Fr | 5 | 21 | 8 | 8 | 58 11.6 | | | | | | | |
| 25. Kamdyn Curfman-VMI | So | 6 | 22 | 12 | 13 | 69 11.5 | | | | | | | |
| 26. Felipe Haase-MER | Jr | 5 | 21 | 6 | 9 | 57 11.4 | | | | | | | |
| 27. Morgan Safford-WOF | Fr | 6 | 23 | 12 | 7 | 65 10.8 | | | | | | | |
| 28. Serrel Smith Jr.-ETSU | Jr | 5 | 18 | 6 | 12 | 54 10.8 | | | | | | | |
| 29. Cory Hightower-WCU | Jr | 4 | 15 | 1 | 12 | 43 10.8 | | | | | | | |
| 30. Alex Hunter-FUR | Sr | 5 | 18 | 12 | 3 | 51 10.2 | | | | | | | |

| FIELD GOAL PCT | | | | | | ASSISTS | | | |
|----------------------------|----|---|-----|-----|------|---------------------------|----|---|-----------|
| | Cl | G | FGM | FGA | Pct. | | Cl | G | No. Avg/G |
| 1. Maciej Bender-MER | Sr | 5 | 30 | 45 | .667 | 1. Storm Murphy-WOF | Sr | 6 | 29 4.8 |
| 2. Leon Ayers III-MER | Jr | 5 | 31 | 49 | .633 | 2. Tyler Mofte-CIT | Sr | 5 | 23 4.6 |
| 3. Xavier Cork-WCU | So | 4 | 20 | 33 | .606 | 3. David Sloan-ETSU | Sr | 4 | 17 4.3 |
| 4. Mike Bothwell-FUR | Jr | 5 | 39 | 71 | .549 | 4. Isaiah Miller-UNCG | Sr | 6 | 25 4.2 |
| 5. Ledarius Brewer-ETSU | Jr | 4 | 33 | 62 | .532 | 5. Greg Parham-VMI | Sr | 6 | 23 3.8 |
| 6. Greg Parham-VMI | Sr | 6 | 53 | 101 | .525 | 6. Noah Gurley-FUR | Jr | 5 | 19 3.8 |
| 7. David Jean-Baptiste-UTC | Sr | 7 | 50 | 98 | .510 | 7. Mason Faulkner-WCU | Sr | 4 | 15 3.8 |
| 8. Ross Cummings-MER | Sr | 5 | 27 | 53 | .509 | 8. Kamdyn Curfman-VMI | So | 6 | 22 3.7 |
| 9. Hayden Brown-CIT | Jr | 5 | 33 | 65 | .508 | 9. Jeff Gary-MER | Jr | 5 | 18 3.6 |
| 10. Jake Stephens-VMI | Jr | 6 | 37 | 73 | .507 | 10. Keyshaun Langley-UNCG | So | 6 | 21 3.5 |
| 11. Clay Mounce-FUR | Sr | 5 | 31 | 62 | .500 | 11. A.J. Caldwell-UTC | Jr | 7 | 24 3.4 |
| 12. Isaiah Miller-UNCG | Sr | 6 | 48 | 104 | .462 | 12. Malachi Smith-UTC | So | 7 | 23 3.3 |
| 13. Storm Murphy-WOF | Sr | 6 | 40 | 88 | .455 | 13. Alex Hunter-FUR | Sr | 5 | 16 3.2 |
| 14. Kaiden Rice-CIT | Sr | 5 | 32 | 76 | .421 | 14. Richardson Maitre-SAM | Sr | 7 | 21 3.0 |
| 15. Noah Gurley-FUR | Jr | 5 | 26 | 66 | .394 | Ryan Larson-WOF | Jr | 6 | 18 3.0 |
| | | | | | | Jake Stephens-VMI | Jr | 6 | 18 3.0 |
| | | | | | | Mike Bothwell-FUR | Jr | 5 | 15 3.0 |
| | | | | | | Felipe Haase-MER | Jr | 5 | 15 3.0 |

2020-21 Southern Conference
INDIVIDUAL BASKETBALL STATISTICS
Through games of Jan 22, 2021 (Conference games only)

| FREE THROW PCT | | | | | |
|------------------------|----|---|-----|-----|------|
| | Cl | G | FTM | FTA | Pct. |
| 1. Storm Murphy-WOF | Sr | 6 | 26 | 28 | .929 |
| 2. Stefan Kenic-UTC | Sr | 7 | 24 | 27 | .889 |
| Jalen Slawson-FUR | Jr | 5 | 16 | 18 | .889 |
| 4. Cory Hightower-WCU | Jr | 4 | 12 | 14 | .857 |
| 5. Xavier Cork-WCU | So | 4 | 16 | 19 | .842 |
| 6. Malachi Smith-UTC | So | 7 | 22 | 27 | .815 |
| 7. Mason Faulkner-WCU | Sr | 4 | 26 | 32 | .813 |
| 8. Greg Parham-VMI | Sr | 6 | 21 | 26 | .808 |
| 9. Jake Stephens-VMI | Jr | 6 | 28 | 35 | .800 |
| 10. Hayden Brown-CIT | Jr | 5 | 32 | 41 | .780 |
| 11. Mike Bothwell-FUR | Jr | 5 | 16 | 21 | .762 |
| 12. David Sloan-ETSU | Sr | 4 | 11 | 15 | .733 |
| 13. Trey Bonham-VMI | Fr | 6 | 21 | 31 | .677 |
| 14. Isaiah Miller-UNCG | Sr | 6 | 18 | 30 | .600 |

| STEALS | | | | |
|----------------------------|----|---|-----|-------|
| | Cl | G | No. | Avg/G |
| 1. Mike Bothwell-FUR | Jr | 5 | 14 | 2.8 |
| 2. Ledarrius Brewer-ETSU | Jr | 4 | 11 | 2.8 |
| 3. Isaiah Miller-UNCG | Sr | 6 | 13 | 2.2 |
| 4. Leon Ayers III-MER | Jr | 5 | 8 | 1.6 |
| 5. Richardson Maitre-SAM | Sr | 7 | 11 | 1.6 |
| 6. Greg Parham-VMI | Sr | 6 | 9 | 1.5 |
| Ryan Larson-WOF | Jr | 6 | 9 | 1.5 |
| Keyshaun Langley-UNCG | So | 6 | 9 | 1.5 |
| 9. Serrel Smith Jr.-ETSU | Jr | 5 | 7 | 1.4 |
| Noah Gurley-FUR | Jr | 5 | 7 | 1.4 |
| Alex Hunter-FUR | Sr | 5 | 7 | 1.4 |
| 12. Trey Bonham-VMI | Fr | 6 | 8 | 1.3 |
| 13. A.J. Staton-McCray-SAM | Fr | 7 | 9 | 1.3 |
| David Jean-Baptiste-UTC | Sr | 7 | 9 | 1.3 |
| A.J. Caldwell-UTC | Jr | 7 | 9 | 1.3 |

| 3-POINT FG PCT | | | | | |
|----------------------------|----|---|-----|-----|------|
| | Cl | G | 3FG | FGA | Pct. |
| 1. Ty Brewer-ETSU | Jr | 5 | 8 | 14 | .571 |
| 2. Greg Parham-VMI | Sr | 6 | 23 | 42 | .548 |
| 3. Trey Bonham-VMI | Fr | 6 | 10 | 19 | .526 |
| 4. Matt Halvorsen-WCU | Sr | 4 | 16 | 35 | .457 |
| 5. Sean Conway-VMI | So | 6 | 15 | 33 | .455 |
| 6. Tray Hollowell-WOF | Sr | 6 | 15 | 34 | .441 |
| 7. Hayden Brown-CIT | Jr | 5 | 11 | 25 | .440 |
| 8. Ross Cummings-MER | Sr | 5 | 16 | 37 | .432 |
| 9. David Jean-Baptiste-UTC | Sr | 7 | 18 | 42 | .429 |
| 10. Storm Murphy-WOF | Sr | 6 | 22 | 52 | .423 |
| Ledarrius Brewer-ETSU | Jr | 4 | 11 | 26 | .423 |
| Malachi Smith-UTC | So | 7 | 11 | 26 | .423 |
| 13. Kaiden Rice-CIT | Sr | 5 | 25 | 60 | .417 |
| 14. Alex Hunter-FUR | Sr | 5 | 12 | 30 | .400 |
| 15. Morgan Safford-WOF | Fr | 6 | 12 | 31 | .387 |

| 3-POINT FG MADE | | | | |
|----------------------------|----|---|-----|-------|
| | Cl | G | 3FG | Avg/G |
| 1. Kaiden Rice-CIT | Sr | 5 | 25 | 5.0 |
| 2. Matt Halvorsen-WCU | Sr | 4 | 16 | 4.0 |
| 3. Greg Parham-VMI | Sr | 6 | 23 | 3.8 |
| 4. Storm Murphy-WOF | Sr | 6 | 22 | 3.7 |
| 5. Ross Cummings-MER | Sr | 5 | 16 | 3.2 |
| 6. Ledarrius Brewer-ETSU | Jr | 4 | 11 | 2.8 |
| 7. David Jean-Baptiste-UTC | Sr | 7 | 18 | 2.6 |
| 8. Tray Hollowell-WOF | Sr | 6 | 15 | 2.5 |
| Sean Conway-VMI | So | 6 | 15 | 2.5 |
| 10. Alex Hunter-FUR | Sr | 5 | 12 | 2.4 |
| 11. Hayden Brown-CIT | Jr | 5 | 11 | 2.2 |
| Clay Mounce-FUR | Sr | 5 | 11 | 2.2 |
| 13. Kamdyn Curfman-VMI | So | 6 | 12 | 2.0 |
| Morgan Safford-WOF | Fr | 6 | 12 | 2.0 |
| 15. Fletcher Abee-CIT | So | 5 | 9 | 1.8 |

| BLOCKED SHOTS | | | | |
|---------------------------|----|---|-----|-------|
| | Cl | G | No. | Avg/G |
| 1. Hayden Koval-UNCG | Sr | 6 | 15 | 2.5 |
| 2. Stephen Clark-CIT | So | 5 | 11 | 2.2 |
| 3. Jake Stephens-VMI | Jr | 6 | 12 | 2.0 |
| 4. Maciej Bender-MER | Sr | 5 | 7 | 1.4 |
| 5. Clay Mounce-FUR | Sr | 5 | 5 | 1.0 |
| Jalen Slawson-FUR | Jr | 5 | 5 | 1.0 |
| Tyler Harris-WCU | So | 4 | 4 | 1.0 |
| 8. Jacob Tryon-SAM | Sr | 7 | 6 | 0.9 |
| 9. Sam Godwin-WOF | Fr | 6 | 5 | 0.8 |
| 10. Brady Spence-CIT | So | 5 | 4 | 0.8 |
| Noah Gurley-FUR | Jr | 5 | 4 | 0.8 |
| 12. Ledarrius Brewer-ETSU | Jr | 4 | 3 | 0.8 |
| 13. Stefan Kenic-UTC | Sr | 7 | 5 | 0.7 |
| 14. Isaiah Miller-UNCG | Sr | 6 | 4 | 0.7 |
| 15. Silas Adheke-ETSU | Sr | 5 | 3 | 0.6 |
| Felipe Haase-MER | Jr | 5 | 3 | 0.6 |

| ASSIST/TURNOVER RATIO | | | | | |
|---------------------------|----|---|------|-----|-------|
| | Cl | G | Ast. | T/O | Ratio |
| 1. A.J. Caldwell-UTC | Jr | 7 | 24 | 7 | 3.4 |
| 2. Alex Hunter-FUR | Sr | 5 | 16 | 5 | 3.2 |
| 3. Jeff Gary-MER | Jr | 5 | 18 | 7 | 2.6 |
| 4. Greg Parham-VMI | Sr | 6 | 23 | 9 | 2.6 |
| 5. Kamdyn Curfman-VMI | So | 6 | 22 | 9 | 2.4 |
| 6. Noah Gurley-FUR | Jr | 5 | 19 | 11 | 1.7 |
| 7. Tyler Moffe-CIT | Sr | 5 | 23 | 14 | 1.6 |
| 8. Keyshaun Langley-UNCG | So | 6 | 21 | 13 | 1.6 |
| 9. David Sloan-ETSU | Sr | 4 | 17 | 11 | 1.5 |
| 10. Richardson Maitre-SAM | Sr | 7 | 21 | 14 | 1.5 |
| 11. Storm Murphy-WOF | Sr | 6 | 29 | 20 | 1.5 |
| 12. Felipe Haase-MER | Jr | 5 | 15 | 11 | 1.4 |
| Mike Bothwell-FUR | Jr | 5 | 15 | 11 | 1.4 |
| 14. Isaiah Miller-UNCG | Sr | 6 | 25 | 19 | 1.3 |
| 15. Ryan Larson-WOF | Jr | 6 | 18 | 14 | 1.3 |

2020-21 Southern Conference
INDIVIDUAL BASKETBALL STATISTICS
Through games of Jan 22, 2021 (Conference games only)

| OFFENSIVE REBOUNDS | | | | |
|-----------------------------|----|---|-----|-------|
| | Cl | G | No. | Avg/G |
| 1. Silas Adheke-ETSU | Sr | 5 | 18 | 3.6 |
| 2. Mohammed Abdulsalam-UNCG | Jr | 6 | 21 | 3.5 |
| 3. Sam Godwin-WOF | Fr | 6 | 15 | 2.5 |
| 4. Jalen Dupree-SAM | Sr | 7 | 17 | 2.4 |
| 5. Clay Mounce-FUR | Sr | 5 | 12 | 2.4 |
| 6. Jalen Slawson-FUR | Jr | 5 | 10 | 2.0 |
| Mike Bothwell-FUR | Jr | 5 | 10 | 2.0 |
| 8. Hayden Brown-CIT | Jr | 5 | 9 | 1.8 |
| Damari Monsanto-ETSU | Fr | 5 | 9 | 1.8 |
| 10. Xavier Cork-WCU | So | 4 | 7 | 1.8 |
| Tyler Harris-WCU | So | 4 | 7 | 1.8 |
| 12. Isaiah Miller-UNCG | Sr | 6 | 10 | 1.7 |
| Angelo Allegri-UNCG | Jr | 6 | 10 | 1.7 |
| 14. Vonnie Patterson-ETSU | Sr | 5 | 8 | 1.6 |
| 15. Logan Dye-SAM | Jr | 7 | 11 | 1.6 |
| Malachi Smith-UTC | So | 7 | 11 | 1.6 |

| DEFENSIVE REBOUNDS | | | | |
|--------------------------|----|---|-----|-------|
| | Cl | G | No. | Avg/G |
| 1. Jake Stephens-VMI | Jr | 6 | 47 | 7.8 |
| 2. Hayden Brown-CIT | Jr | 5 | 39 | 7.8 |
| 3. Isaiah Miller-UNCG | Sr | 6 | 44 | 7.3 |
| 4. Damari Monsanto-ETSU | Fr | 5 | 34 | 6.8 |
| 5. Malachi Smith-UTC | So | 7 | 44 | 6.3 |
| 6. Cory Hightower-WCU | Jr | 4 | 25 | 6.3 |
| 7. Ryan Larson-WOF | Jr | 6 | 35 | 5.8 |
| 8. Felipe Haase-MER | Jr | 5 | 28 | 5.6 |
| 9. Ledarrius Brewer-ETSU | Jr | 4 | 22 | 5.5 |
| 10. Kaiden Rice-CIT | Sr | 5 | 26 | 5.2 |
| 11. Maciej Bender-MER | Sr | 5 | 24 | 4.8 |
| 12. Sean Conway-VMI | So | 6 | 27 | 4.5 |
| Tyler Harris-WCU | So | 4 | 18 | 4.5 |
| 14. Mason Faulkner-WCU | Sr | 4 | 17 | 4.3 |
| 15. Clay Mounce-FUR | Sr | 5 | 21 | 4.2 |
| Jalen Slawson-FUR | Jr | 5 | 21 | 4.2 |

| MINUTES PLAYED | | | | |
|-----------------------|----|---|-----|-------|
| | Cl | G | No. | Avg/G |
| 1. Matt Halvorsen-WCU | Sr | 4 | 150 | 37.5 |
| 2. Kamdyn Curfman-VMI | So | 6 | 219 | 36.5 |
| 3. Malachi Smith-UTC | So | 7 | 252 | 36.0 |
| Mason Faulkner-WCU | Sr | 4 | 144 | 36.0 |
| 5. Storm Murphy-WOF | Sr | 6 | 215 | 35.8 |
| 6. Greg Parham-VMI | Sr | 6 | 214 | 35.7 |
| 7. Jeff Gary-MER | Jr | 5 | 175 | 35.0 |
| Kaiden Rice-CIT | Sr | 5 | 175 | 35.0 |
| 9. Mike Bothwell-FUR | Jr | 5 | 173 | 34.6 |
| 10. Fletcher Abee-CIT | So | 5 | 168 | 33.6 |

2020-21 Southern Conference
Conference Team Highs
Through games of Jan 22, 2021 (Conference games only)

TEAM HIGHS (highest totals made by)

| | | |
|-----------------------|--------------|--|
| Points | 110 | VMI vs The Citadel (01/16/21) |
| | 103 | The Citadel at VMI (01/16/21) |
| | 94 | Wofford vs Samford (01/02/21) |
| | 94 | Furman at The Citadel (01/13/21) |
| | 92 | The Citadel vs Chattanooga (01/09/21) |
| | 92 | ETSU vs VMI (01/18/21) |
| Margin | 24 (87-63) | UNCG at Samford (01/14/21) |
| | 20 (83-63) | Mercer at The Citadel (01/20/21) |
| | 18 (77-59) | Wofford at Chattanooga (01/16/21) |
| | 14 (87-73) | UNCG vs The Citadel (01/18/21) |
| | 13 (78-65) | Wofford at Mercer (12/29/20) |
| | 13 (84-71) | Samford vs VMI (12/30/20) |
| Field goals made | 38 | UNCG vs The Citadel (01/18/21) |
| | 37 | Furman at The Citadel (01/13/21) |
| | 36 | VMI vs The Citadel (01/16/21) |
| | 36 | Mercer at The Citadel (01/20/21) |
| | 34 | The Citadel at VMI (01/16/21) |
| Field goal attempts | 73 | The Citadel at VMI (01/16/21) |
| | 73 | UNCG vs The Citadel (01/18/21) |
| | 73 | Furman at VMI (01/20/21) |
| | 72 | Furman at The Citadel (01/13/21) |
| | 70 | Chattanooga at The Citadel (01/09/21) |
| Field goal percentage | .633 (31-49) | Wofford vs Samford (01/02/21) |
| | .569 (33-58) | ETSU vs VMI (01/18/21) |
| | .556 (30-54) | Mercer at Furman (01/02/21) |
| | .537 (36-67) | Mercer at The Citadel (01/20/21) |
| | .534 (31-58) | Furman vs Mercer (01/02/21) |
| 3-Pt FG made | 16 | Wofford vs Samford (01/02/21) |
| | 16 | The Citadel vs Chattanooga (01/09/21) |
| | 16 | ETSU vs VMI (01/18/21) |
| | 14 | Wofford at VMI (01/13/21) |
| | 13 | Chattanooga vs Furman (12/30/20) |
| | 13 | VMI vs Wofford (01/13/21) |
| | 13 | The Citadel at VMI (01/16/21) |
| 3-Pt FG attempts | 39 | VMI at Samford (12/30/20) |
| | 39 | Furman at VMI (01/20/21) |
| | 34 | The Citadel vs Furman (01/13/21) |
| | 33 | The Citadel at UNCG (01/18/21) |
| | 32 | Mercer at Chattanooga (01/13/21) |
| 3-Pt percentage | .588 (10-17) | VMI vs Chattanooga (01/02/21) |
| | .571 (16-28) | Wofford vs Samford (01/02/21) |
| | .538 (14-26) | Wofford at VMI (01/13/21) |
| | .533 (16-30) | ETSU vs VMI (01/18/21) |
| | .516 (16-31) | The Citadel vs Chattanooga (01/09/21) |
| Free throws made | 30 | Western Carolina at Mercer (01/16/21) |
| | 26 | VMI vs The Citadel (01/16/21) |
| | 23 | Mercer vs Western Carolina (01/16/21) |
| | 22 | The Citadel at VMI (01/16/21) |
| | 20 | The Citadel vs Chattanooga (01/09/21) |
| | 20 | Chattanooga vs Mercer (01/13/21) |
| | 20 | VMI at ETSU (01/18/21) |
| | 20 | Western Carolina at Samford (01/18/21) |
| Free throw attempts | 36 | Western Carolina at Mercer (01/16/21) |
| | 32 | The Citadel at VMI (01/16/21) |
| | 30 | Mercer vs Western Carolina (01/16/21) |

| | | |
|-----------------------|--------------|--|
| | 30 | VMI vs The Citadel (01/16/21) |
| | 28 | Samford vs UNCG (01/14/21) |
| | 28 | UNCG at Samford (01/16/21) |
| Free throw percentage | .944 (17-18) | Chattanooga at The Citadel (01/09/21) |
| | .909 (20-22) | Chattanooga vs Mercer (01/13/21) |
| | .889 (8-9) | Chattanooga vs Furman (12/30/20) |
| | .889 (8-9) | Mercer at Chattanooga (01/13/21) |
| | .867 (26-30) | VMI vs The Citadel (01/16/21) |
| Rebounds | 47 | Samford vs UNCG (01/14/21) |
| | 46 | Samford vs VMI (12/30/20) |
| | 46 | ETSU at UNCG (01/02/21) |
| | 43 | Wofford at Mercer (12/29/20) |
| | 43 | UNCG vs The Citadel (01/18/21) |
| Assists | 21 | Samford vs VMI (12/30/20) |
| | 21 | Wofford vs Samford (01/02/21) |
| | 21 | Chattanooga vs Samford (01/06/21) |
| | 21 | The Citadel vs Chattanooga (01/09/21) |
| | 21 | Furman at The Citadel (01/13/21) |
| Steals | 14 | Furman vs Mercer (01/02/21) |
| | 13 | ETSU vs Western Carolina (12/30/20) |
| | 13 | Furman at The Citadel (01/13/21) |
| | 13 | Samford vs Western Carolina (01/18/21) |
| | 12 | Samford at Wofford (01/02/21) |
| Blocked shots | 8 | The Citadel vs Furman (01/13/21) |
| | 7 | VMI at Samford (12/30/20) |
| | 7 | The Citadel vs Chattanooga (01/09/21) |
| | 7 | UNCG vs The Citadel (01/18/21) |
| | 6 | UNCG vs ETSU (01/02/21) |
| | 6 | Wofford vs UNCG (01/06/21) |
| | 6 | UNCG at Samford (01/14/21) |
| Turnovers | 22 | Wofford vs Samford (01/02/21) |
| | 20 | The Citadel vs Furman (01/13/21) |
| | 20 | Samford vs UNCG (01/14/21) |
| | 20 | Samford vs Chattanooga (01/20/21) |
| | 19 | Western Carolina at ETSU (12/30/20) |
| | 19 | Mercer at Furman (01/02/21) |
| | 19 | Western Carolina at Samford (01/18/21) |
| Fouls | 29 | Mercer vs Western Carolina (01/16/21) |
| | 25 | Samford vs Western Carolina (01/18/21) |
| | 24 | Samford vs UNCG (01/14/21) |
| | 24 | VMI vs The Citadel (01/16/21) |
| | 23 | Western Carolina at ETSU (12/30/20) |
| | 23 | Samford at Wofford (01/02/21) |
| | 23 | Chattanooga at The Citadel (01/09/21) |
| | 23 | Chattanooga vs Wofford (01/16/21) |
| | 23 | Western Carolina at Samford (01/18/21) |

2020-21 Southern Conference
Conference Individual Highs
Through games of Jan 22, 2021 (Conference games only)

INDIVIDUAL PLAYER GAME HIGHS

| | | | |
|-----------------------|-------|---------|---|
| Points | 37 | | Hayden Brown (The Citadel) vs Chattanooga (01/09/21) |
| | 33 | | Jake Stephens (VMI) vs The Citadel (01/16/21) |
| | 32 | | Mike Bothwell (Furman) vs ETSU (01/16/21) |
| | 30 | | Isaiah Miller (UNCG) vs The Citadel (01/18/21) |
| | 29 | | David Jean-Baptiste (Chattanooga) at VMI (01/02/21) |
| | 29 | | Clay Mounce (Furman) at The Citadel (01/13/21) |
| | 29 | | Greg Parham (VMI) vs Wofford (01/13/21) |
| | 29 | | Kaiden Rice (The Citadel) at VMI (01/16/21) |
| | 15 | | Isaiah Miller (UNCG) vs The Citadel (01/18/21) |
| | 12 | | Jake Stephens (VMI) vs The Citadel (01/16/21) |
| Field goals made | 11 | | Mike Bothwell (Furman) vs ETSU (01/16/21) |
| | 10 | | Clay Mounce (Furman) vs Mercer (01/02/21) |
| | 10 | | David Jean-Baptiste (Chattanooga) at VMI (01/02/21) |
| | 10 | | Hayden Brown (The Citadel) vs Chattanooga (01/09/21) |
| | 10 | | Clay Mounce (Furman) at The Citadel (01/13/21) |
| | 10 | | Greg Parham (VMI) vs Wofford (01/13/21) |
| | 10 | | Maciej Bender (Mercer) vs Western Carolina (01/16/21) |
| | 10 | | Greg Parham (VMI) vs The Citadel (01/16/21) |
| | 10 | | Greg Parham (VMI) at ETSU (01/18/21) |
| | 10 | | Leon Ayers III (Mercer) at The Citadel (01/20/21) |
| Field goal attempts | 25 | | Isaiah Miller (UNCG) vs The Citadel (01/18/21) |
| | 22 | | Jake Stephens (VMI) vs The Citadel (01/16/21) |
| | 21 | | Noah Gurley (Furman) at The Citadel (01/13/21) |
| | 20 | | Greg Parham (VMI) at ETSU (01/18/21) |
| | 19 | | Greg Parham (VMI) at Samford (12/30/20) |
| | 19 | | Isaiah Miller (UNCG) vs ETSU (01/02/21) |
| | 19 | | Mike Bothwell (Furman) vs ETSU (01/16/21) |
| | 19 | | Storm Murphy (Wofford) at Chattanooga (01/16/21) |
| Field goal percentage | .833 | (10-12) | Clay Mounce (Furman) at The Citadel (01/13/21) |
| | .818 | (9-11) | Ty Brewer (ETSU) vs Western Carolina (12/30/20) |
| | .769 | (10-13) | Maciej Bender (Mercer) vs Western Carolina (01/16/21) |
| | .750 | (9-12) | Jacob Tryon (Samford) at Wofford (01/02/21) |
| | .714 | (10-14) | Leon Ayers III (Mercer) at The Citadel (01/20/21) |
| 3-Pt FG made | 7 | | Hayden Brown (The Citadel) vs Chattanooga (01/09/21) |
| | 7 | | Greg Parham (VMI) vs Wofford (01/13/21) |
| | 7 | | Sean Conway (VMI) vs The Citadel (01/16/21) |
| | 7 | | Kaiden Rice (The Citadel) at VMI (01/16/21) |
| | 6 | | David Jean-Baptiste (Chattanooga) vs Samford (01/06/21) |
| | 6 | | Kaiden Rice (The Citadel) vs Furman (01/13/21) |
| | 6 | | Ross Cummings (Mercer) at Chattanooga (01/13/21) |
| 3-Pt FG attempts | 14 | | Kaiden Rice (The Citadel) at UNCG (01/18/21) |
| | 13 | | Greg Parham (VMI) at Samford (12/30/20) |
| | 12 | | Kaiden Rice (The Citadel) vs Chattanooga (01/09/21) |
| | 12 | | Kaiden Rice (The Citadel) vs Furman (01/13/21) |
| | 12 | | Ross Cummings (Mercer) at Chattanooga (01/13/21) |
| | 12 | | Kaiden Rice (The Citadel) vs Mercer (01/20/21) |
| 3-Pt percentage | 1.000 | (5-5) | Tray Hollowell (Wofford) at VMI (01/13/21) |
| | .875 | (7-8) | Greg Parham (VMI) vs Wofford (01/13/21) |
| | .750 | (6-8) | David Jean-Baptiste (Chattanooga) vs Samford (01/06/21) |
| | .700 | (7-10) | Hayden Brown (The Citadel) vs Chattanooga (01/09/21) |
| | .700 | (7-10) | Sean Conway (VMI) vs The Citadel (01/16/21) |
| Free throws made | .700 | (7-10) | Kaiden Rice (The Citadel) at VMI (01/16/21) |
| | 16 | | Mason Faulkner (Western Carolina) at Mercer (01/16/21) |
| | 10 | | Hayden Brown (The Citadel) vs Chattanooga (01/09/21) |
| | 10 | | Neftali Alvarez (Mercer) vs Western Carolina (01/16/21) |

| | | | |
|-----------------------|-------|---------|--|
| | 10 | | Xavier Cork (Western Carolina) at Samford (01/18/21) |
| | 8 | | Storm Murphy (Wofford) vs Samford (01/02/21) |
| | 8 | | Isaiah Miller (UNCG) at Samford (01/14/21) |
| | 8 | | Mike Bothwell (Furman) vs ETSU (01/16/21) |
| | 8 | | Jake Stephens (VMI) vs The Citadel (01/16/21) |
| | 8 | | Jake Stephens (VMI) at ETSU (01/18/21) |
| Free throw attempts | 18 | | Mason Faulkner (Western Carolina) at Mercer (01/16/21) |
| | 14 | | Isaiah Miller (UNCG) at Samford (01/14/21) |
| | 13 | | Neftali Alvarez (Mercer) vs Western Carolina (01/16/21) |
| | 12 | | Hayden Brown (The Citadel) vs Chattanooga (01/09/21) |
| | 11 | | Xavier Cork (Western Carolina) at Samford (01/18/21) |
| Free throw percentage | 1.000 | (8-8) | Storm Murphy (Wofford) vs Samford (01/02/21) |
| | .909 | (10-11) | Xavier Cork (Western Carolina) at Samford (01/18/21) |
| | .889 | (16-18) | Mason Faulkner (Western Carolina) at Mercer (01/16/21) |
| | .889 | (8-9) | Mike Bothwell (Furman) vs ETSU (01/16/21) |
| | .889 | (8-9) | Jake Stephens (VMI) vs The Citadel (01/16/21) |
| | .889 | (8-9) | Jake Stephens (VMI) at ETSU (01/18/21) |
| Rebounds | 14 | | Damari Monsanto (ETSU) vs VMI (01/18/21) |
| | 14 | | Jalen Slawson (Furman) at VMI (01/20/21) |
| | 14 | | Jake Stephens (VMI) vs Furman (01/20/21) |
| | 13 | | Christian Guess (Samford) at Chattanooga (01/06/21) |
| | 13 | | Isaiah Miller (UNCG) at Wofford (01/06/21) |
| | 13 | | Hayden Brown (The Citadel) vs Chattanooga (01/09/21) |
| | 13 | | Sean Conway (VMI) vs The Citadel (01/16/21) |
| | 13 | | Damari Monsanto (ETSU) at Western Carolina (01/20/21) |
| Assists | 11 | | Storm Murphy (Wofford) vs Samford (01/02/21) |
| | 8 | | A.J. Caldwell (Chattanooga) vs Samford (01/06/21) |
| | 8 | | Isaiah Miller (UNCG) at Wofford (01/06/21) |
| | 8 | | Richardson Maitre (Samford) vs Western Carolina (01/18/21) |
| | 7 | | Tyler Mofe (The Citadel) vs Chattanooga (01/09/21) |
| | 7 | | Neftali Alvarez (Mercer) at The Citadel (01/20/21) |
| | 7 | | Alex Hunter (Furman) at VMI (01/20/21) |
| Steals | 7 | | Ledarius Brewer (ETSU) vs Western Carolina (12/30/20) |
| | 6 | | Mike Bothwell (Furman) vs Mercer (01/02/21) |
| | 5 | | Jalen Slawson (Furman) at VMI (01/20/21) |
| | 4 | | Isaiah Miller (UNCG) at Wofford (01/06/21) |
| | 4 | | Mike Bothwell (Furman) at The Citadel (01/13/21) |
| | 4 | | Alex Hunter (Furman) at The Citadel (01/13/21) |
| | 4 | | A.J. Caldwell (Chattanooga) vs Wofford (01/16/21) |
| | 4 | | Richardson Maitre (Samford) vs Western Carolina (01/18/21) |
| | 4 | | Isaiah Miller (UNCG) vs The Citadel (01/18/21) |
| Blocked shots | 5 | | Jake Stephens (VMI) at Samford (12/30/20) |
| | 5 | | Stephen Clark (The Citadel) vs Chattanooga (01/09/21) |
| | 5 | | Stephen Clark (The Citadel) vs Furman (01/13/21) |
| | 4 | | Hayden Koval (UNCG) vs ETSU (01/02/21) |
| | 4 | | Messiah Jones (Wofford) vs UNCG (01/06/21) |
| | 4 | | Hayden Koval (UNCG) at Samford (01/14/21) |
| Turnovers | 7 | | Storm Murphy (Wofford) vs UNCG (01/06/21) |
| | 6 | | Cory Hightower (Western Carolina) at ETSU (12/30/20) |
| | 6 | | Leon Ayers III (Mercer) at Furman (01/02/21) |
| | 6 | | Ledarius Brewer (ETSU) at UNCG (01/02/21) |
| | 6 | | Isaiah Miller (UNCG) vs Wofford (01/09/21) |