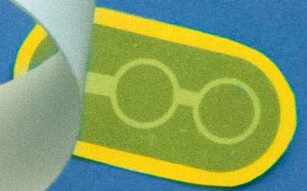


# 3D Paper Coffee Cup



by paperjulia



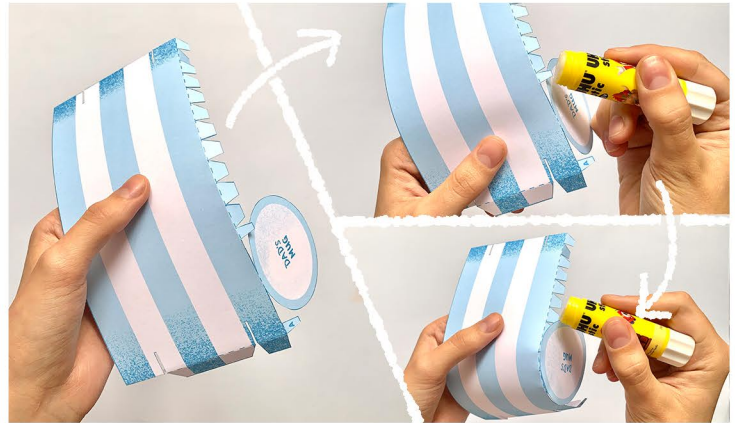


# 3d Paper Coffee Cup

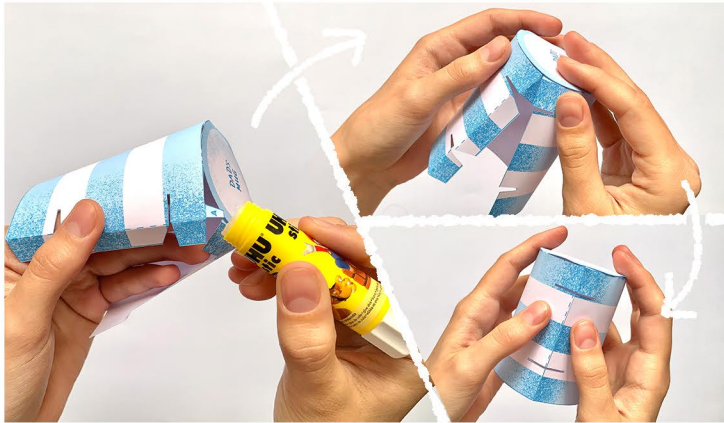
by paperjulia



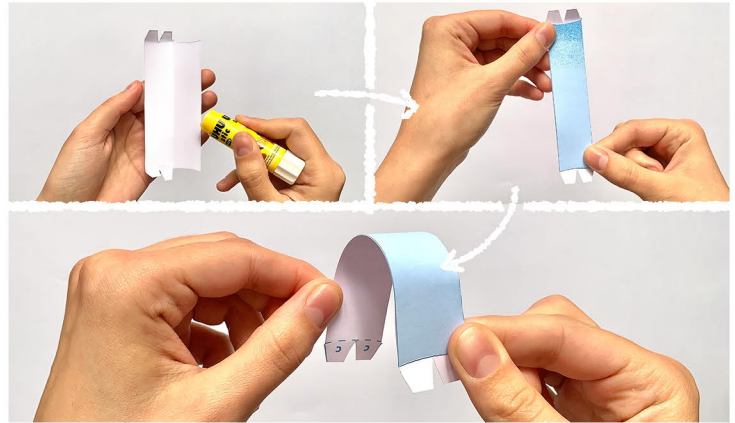
1. Print page 4 onto heavier paper, 100 gsm or more is preferred. Print page 5 on sticker paper. If you don't have sticker paper, print it into regular copy paper. Cut all pieces.



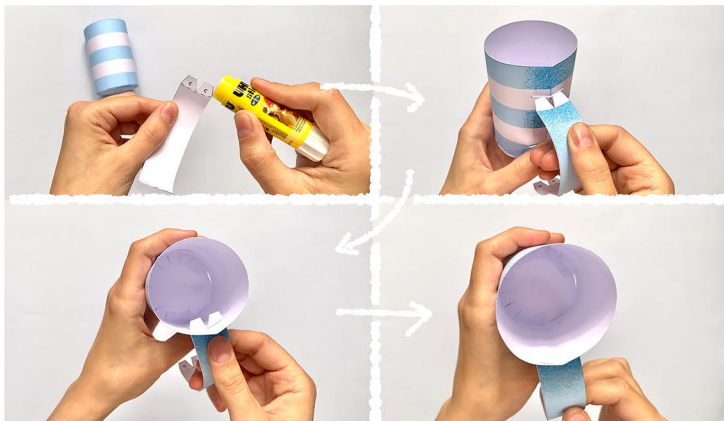
2. To assemble the mug, first fold down all flaps along the dashed line. Glue the bottom flaps -except flap A- to the unprinted side of the circle. Glue them a few at a time to make sure you form a nice curve.



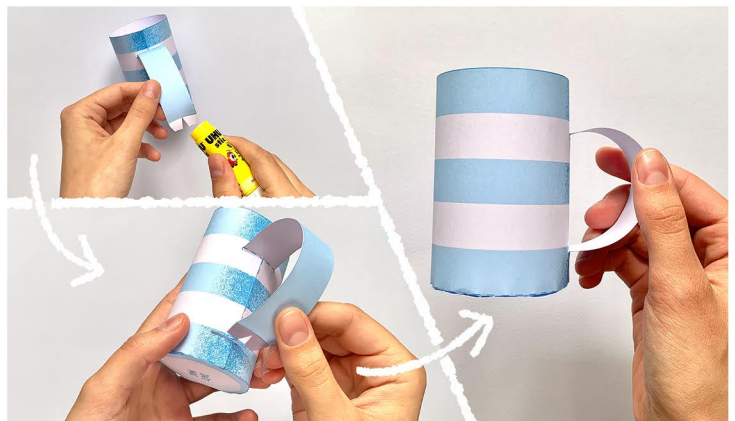
3. Glue flap A to the circle. Continue to glue the side tabs to the other end to form a cylinder, making sure the stripes are aligned.



4. Apply glue to the unprinted side of the handle and fold it half. With the blue side up, curve ends down to make it take the shape of a real handle.



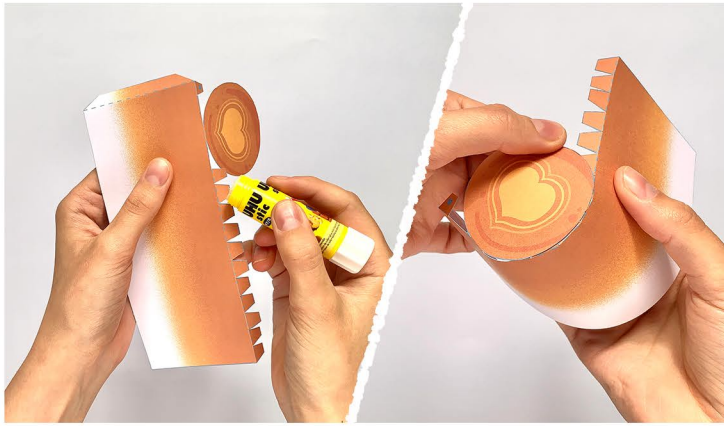
5. Apply glue to flaps C and insert them through the upper slot. Fold them down to adhere them to the inner part of the mug.



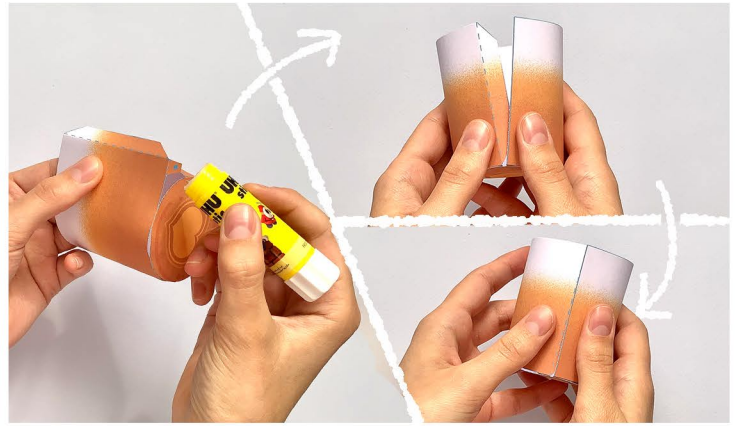
6. Repeat the previous step with flaps "D", inserting them to the bottom slot and glue them down to the inside to secure the handle.

# 3d Paper Coffee Cup

by paperjulia



7. To assemble the coffee insert, repeat the same steps as for the mug. Glue all bottom tabs except for B to the circle, a few at a time.



8. Glue flap B to the circle, then glue the side flap to the other end to form a cylinder.



9. Insert the coffee into the mug. The fit should be tight enough so that glue is not needed.

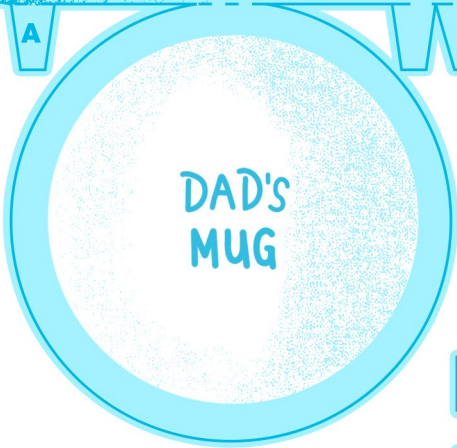


10. To customize your cup, cut your favorite stickers and glue them to the mug. If you didn't print the sheet on sticker paper, use glue to adhere them.

**Your craft is complete!**



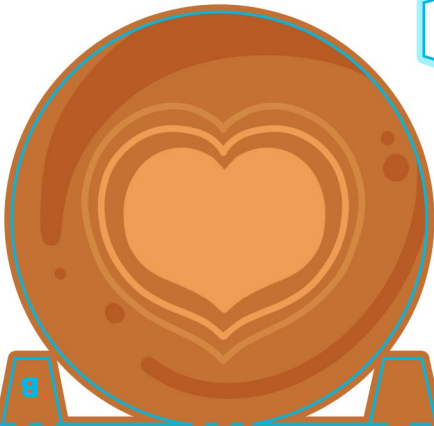
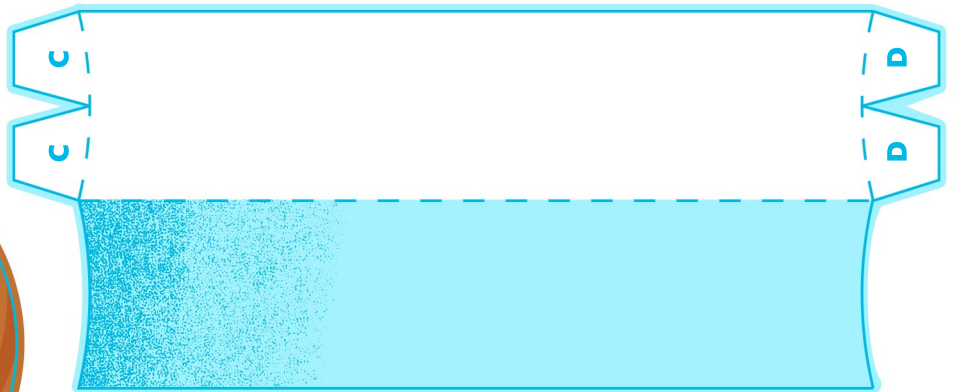




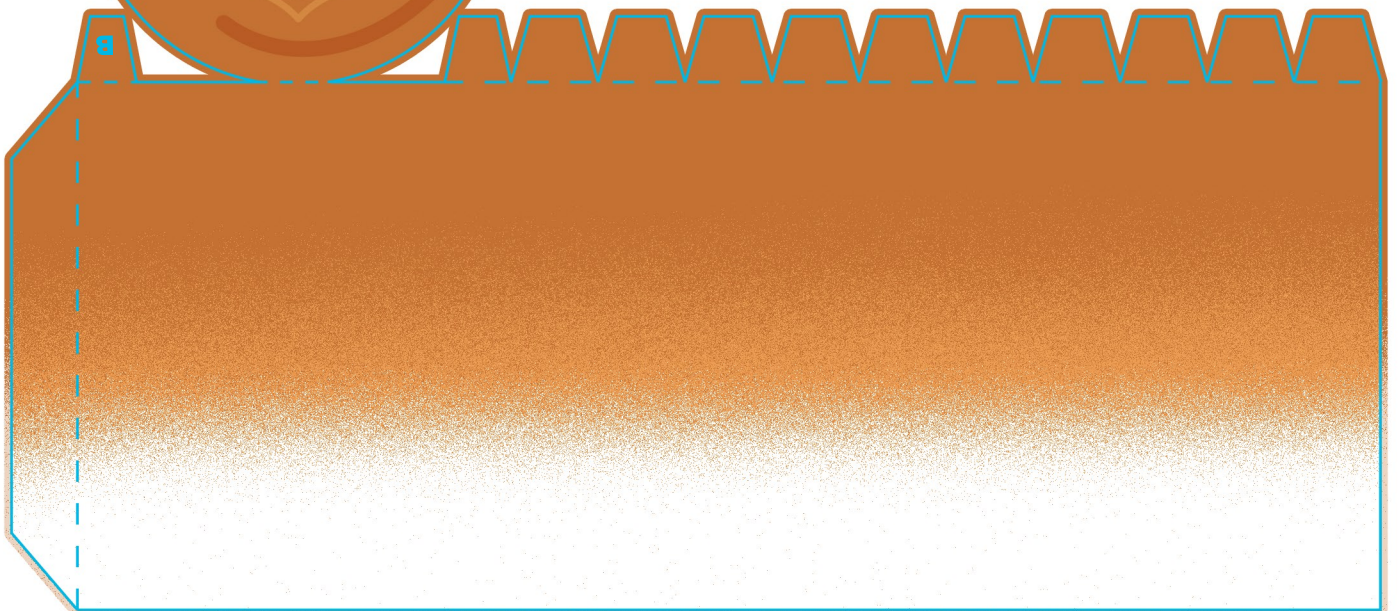
Mug



Mug handle

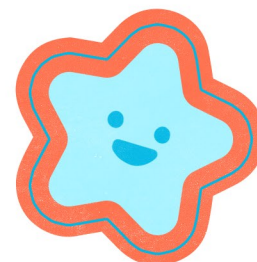
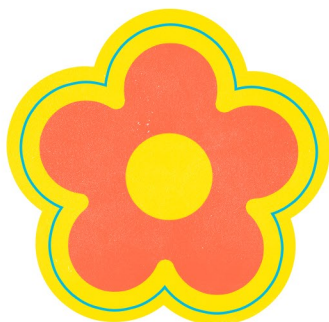


Coffee



# FATHER'S DAY STICKER SHEET

12  
STICKERS



Cut ———