

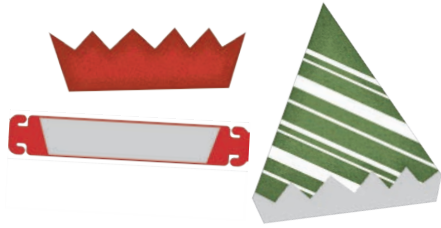


# ***DEER AND ELF HEADBANDS***

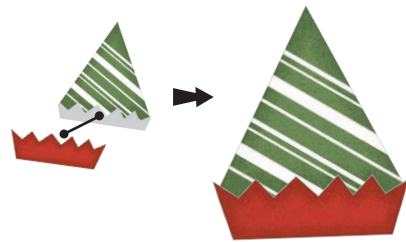
How To by Edge Marquez(@popp3d)

# ELF HEADBAND

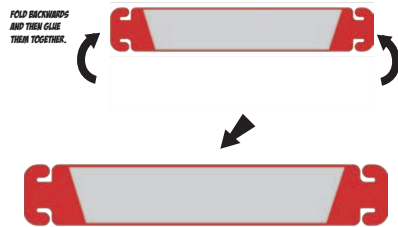
1. CUT OUT ALL THE PIECES



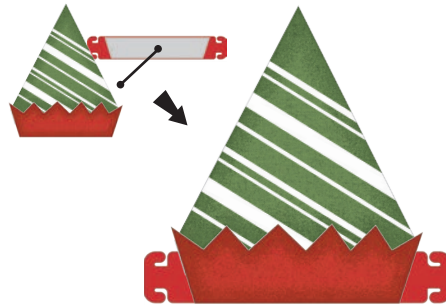
2. GLUE 2 TO 1 ONTO THE GRAY AREA



3. FOLD AND GLUE 3. ONCE GLUE DRIES, CUT AROUND THE OUTSIDE OF THE COLORED AREA (ALONG THE GRAY OUTLINE).

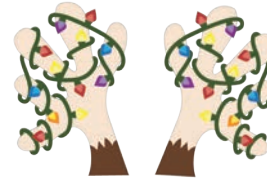


4. GLUE 1&2 TO 3 ONTO THE GRAY AREA



# DEER HEADBAND

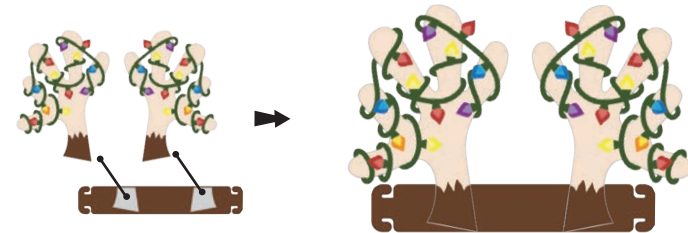
1. CUT OUT ALL THE PIECES



2. FOLD AND GLUE 2. ONCE GLUE DRIES, CUT AROUND THE OUTSIDE OF THE COLORED AREA (ALONG THE GRAY OUTLINE).

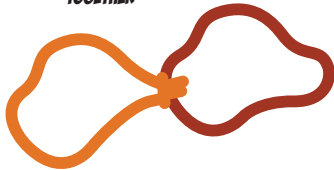


3. GLUE 1A & 1B TO 2 ONTO THE GRAY AREA

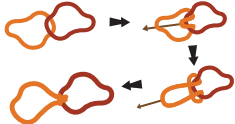


## WHAT TO DO WITH THE RUBBER BANDS?

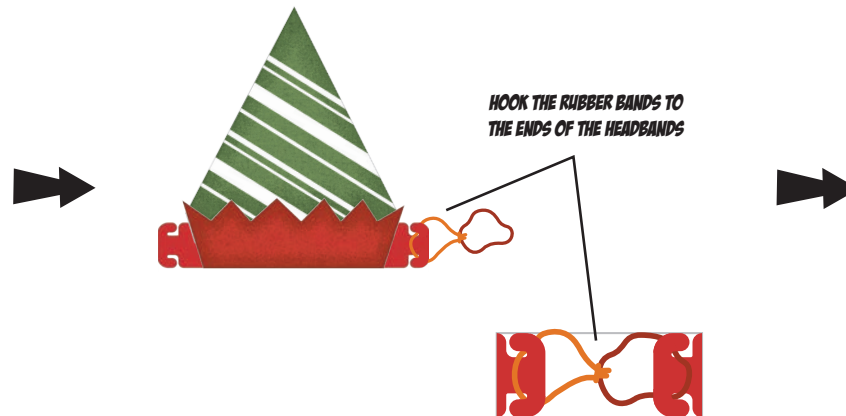
TIE 2 RUBBER BANDS TOGETHER



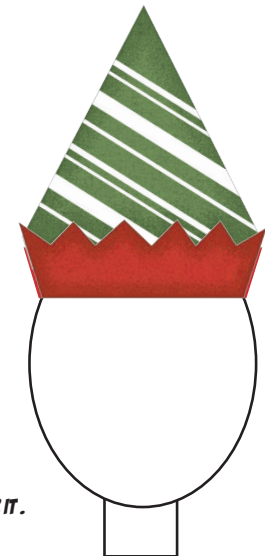
HOW TO TIE 2 RUBBER BANDS TOGETHER?

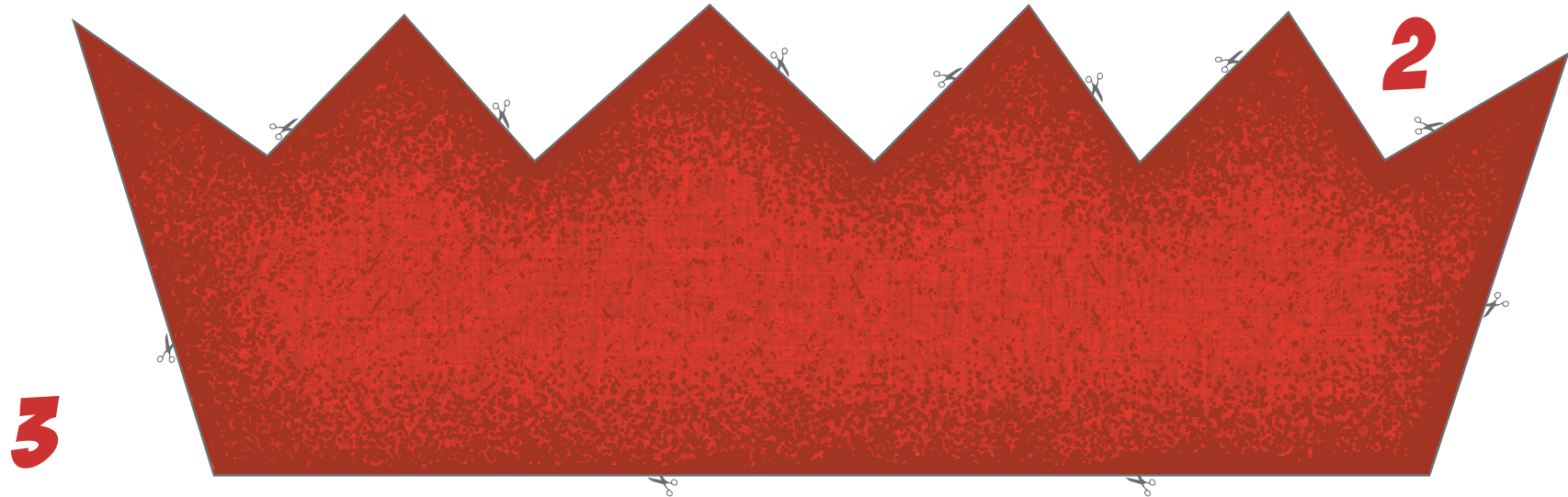


HOOK THE RUBBER BANDS TO THE ENDS OF THE HEADBANDS



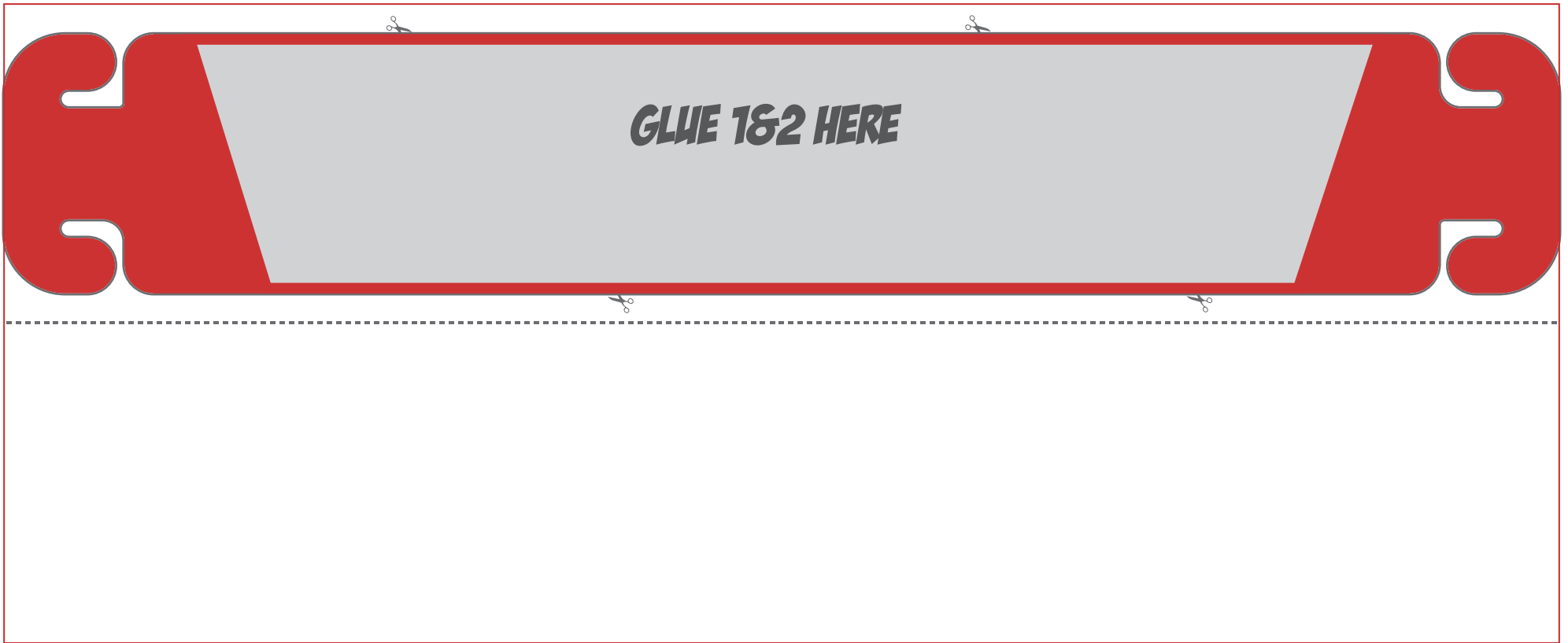
AND THAT'S IT!  
YOU CAN NOW WEAR IT.





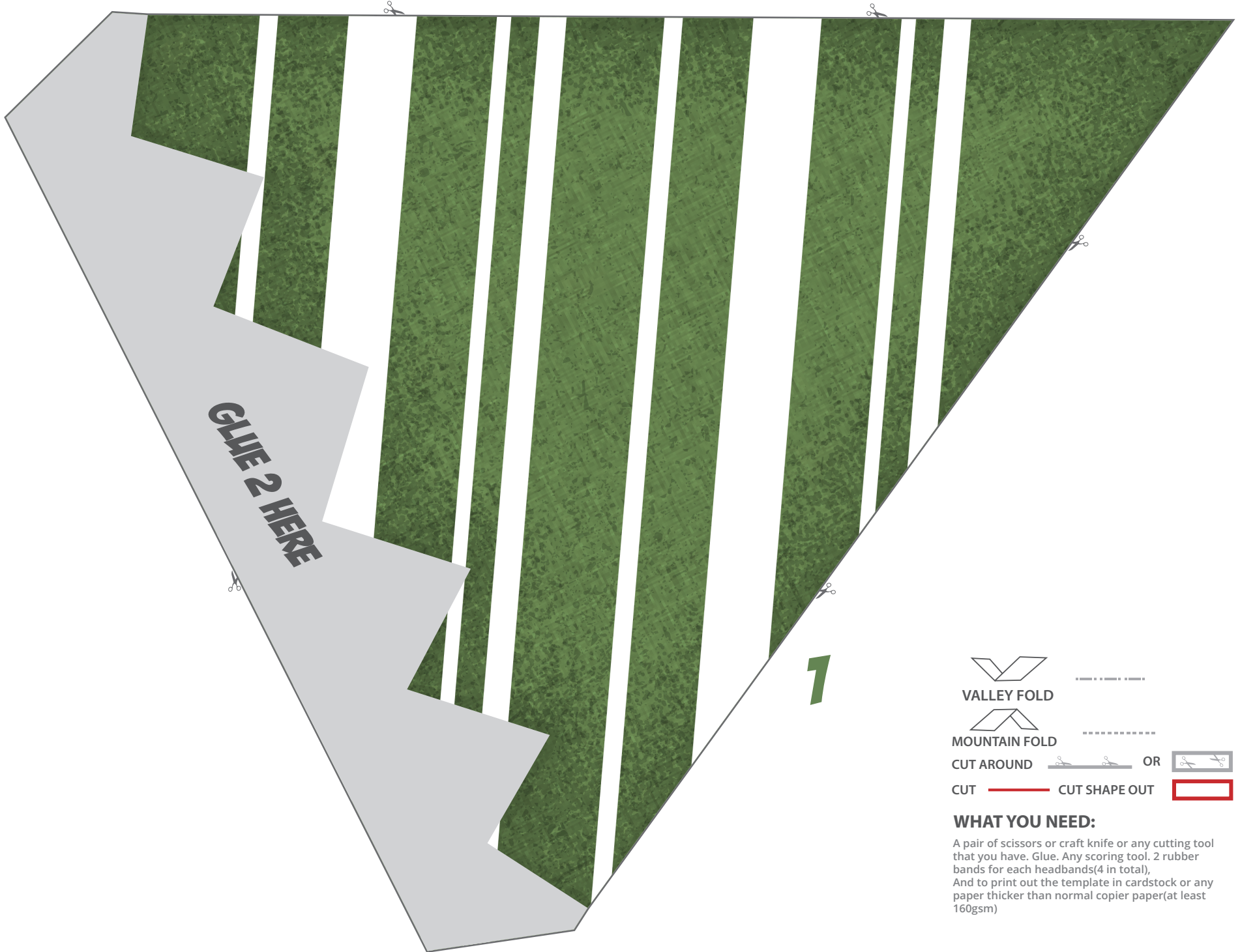
2

3



GLUE 1&2 HERE

3



**GLUE 2 HERE**

**1**



VALLEY FOLD



MOUNTAIN FOLD

CUT AROUND



OR



CUT

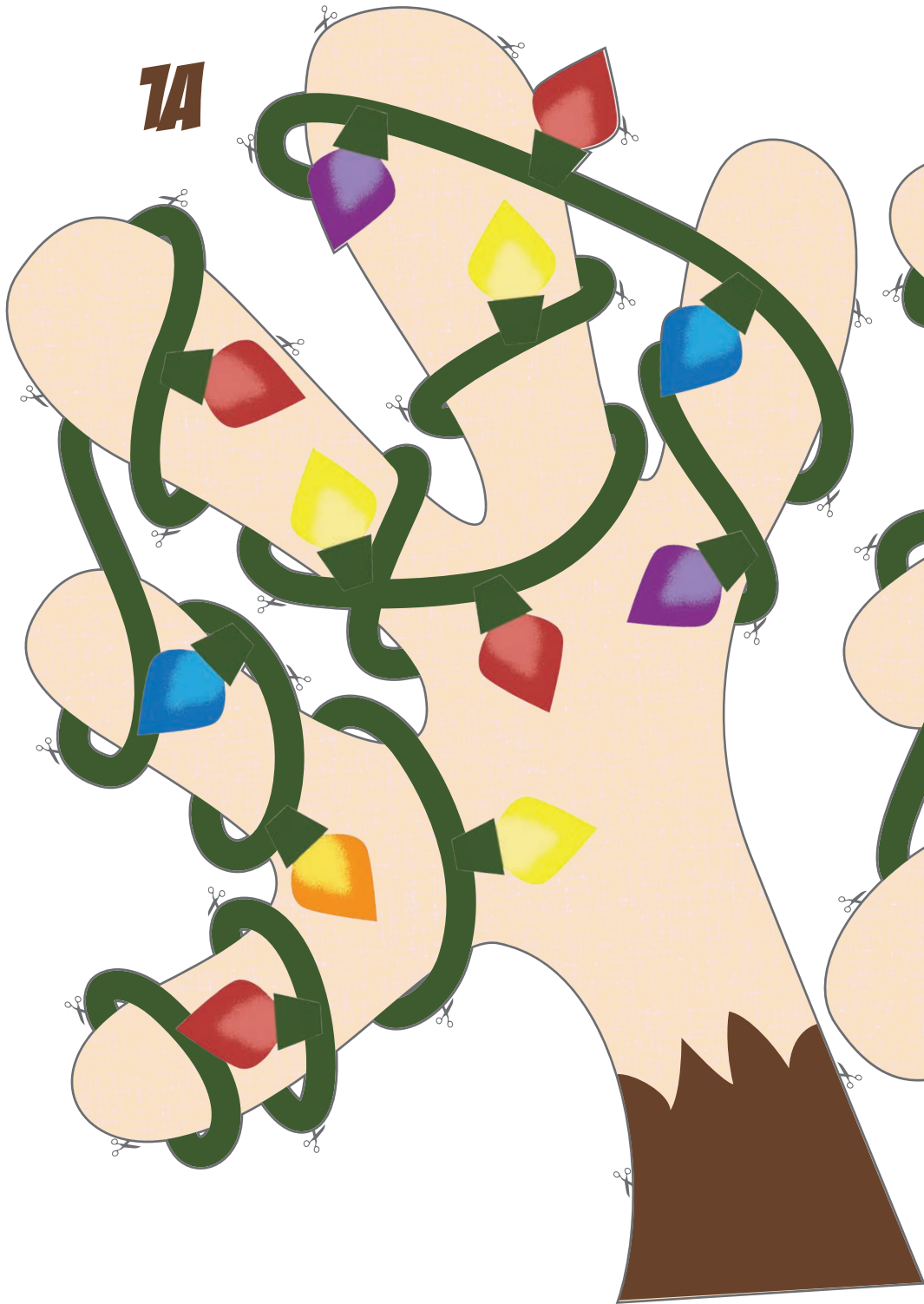
CUT SHAPE OUT



**WHAT YOU NEED:**

A pair of scissors or craft knife or any cutting tool that you have. Glue. Any scoring tool. 2 rubber bands for each headbands(4 in total), And to print out the template in cardstock or any paper thicker than normal copier paper(at least 160gsm)

1A



1B



**2**

