

Read the story, and then try the puzzle. To help you, we have underlined the answers to the crossword puzzle clues in the story – but you will need to match the correct word with each clue!



## ANIMAL NEWS



### PETS AS PASSWORDS

MILLIONS of British people use their pet's name as a password for online accounts.

A new study by the National Cyber Security Centre (NCSC) found that 15% of the public use pets' names, while 14% use a family member's name. A further 6% use their favourite sports team, while another 6% use the password 'password'.

The NCSC has warned that using passwords such as these make accounts easier for cyber criminals to hack into. The centre is encouraging people to change their passwords to three random, unconnected words instead, such as 'RedPantsTree'.

This makes them far less easy to guess, and much more original.

### BIG LIZARD SHOCKS SHOPPERS

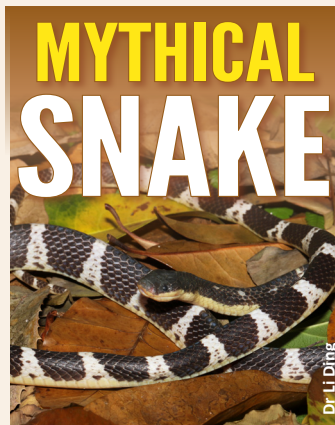
SHOPPERS were left in shock in Thailand, when a giant lizard started climbing the supermarket shelves.

The huge Asian water monitor lizard was caught on camera at a 7-Eleven store in Nakhon Pathom.

He was clearly feeling thirsty, as he headed for the milk aisle. After climbing the shelves, he decided to chill out next to the ice machine.

Staff at the store rang the police, who hurried to the scene with a team of reptile handlers.

It's thought the lizard had found its way from a local canal. Footage of the bonkers incident quickly went viral.



A NEW species of venomous snake has been named after a character from a famous Chinese myth.

The *Bungarus suzhenae* or Suzhen's krait is named after Bai Su Zhen – a powerful snake goddess from the traditional Chinese myth *Legend of White Snake*.

The new species, a black and white banded krait, was discovered by scientists who collected samples between 2016 and 2019 in Yingjiang County, Yunnan Province, China. The new species has been found in southwestern China and northern Myanmar. Scientists are keen to find out as much as they can about the highly venomous species, which will help protect people who live near the snake's habitat.

#### ACROSS

- 2) A person in a story (noun 9)
- 3) Without a plan or pattern (adjective 6)
- 5) Poisonous (adjective 8)
- 7) A type of animal with a dry scaly skin (noun 7)

#### DOWN

- 1) A secret word or phrase that you use, eg, to get into your computer (noun 7)
- 2) To do with computers (adjective 5)
- 4) A passage between shelves of food in a supermarket (noun 5)
- 6) A traditional story, usually with a supernatural character or event (noun 4)

