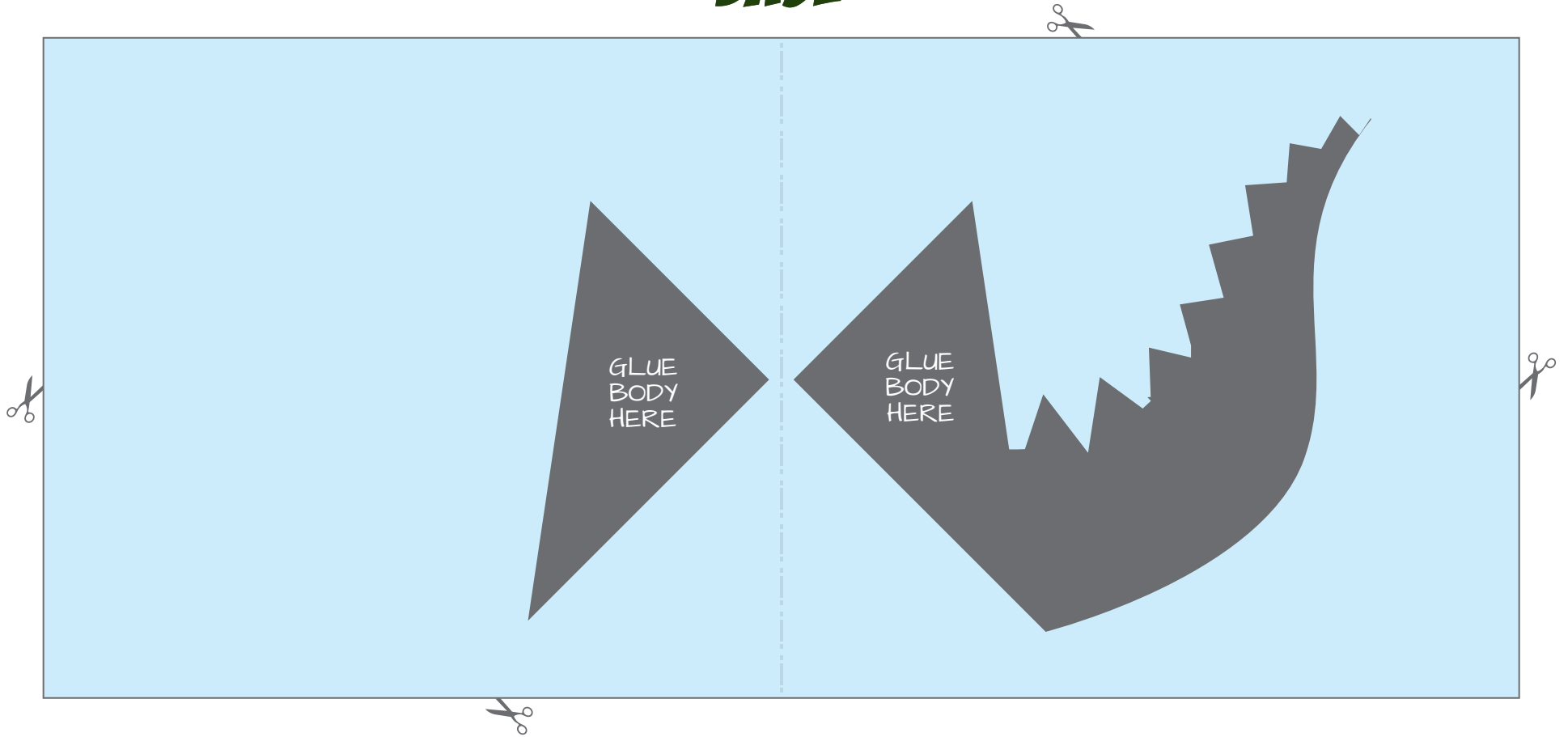




**MONSTROUS
BIRTHDAY
POP-UP CARD**
A HOW TO AND TEMPLATE
BY EDGE MARQUEZ (@POPP3D)

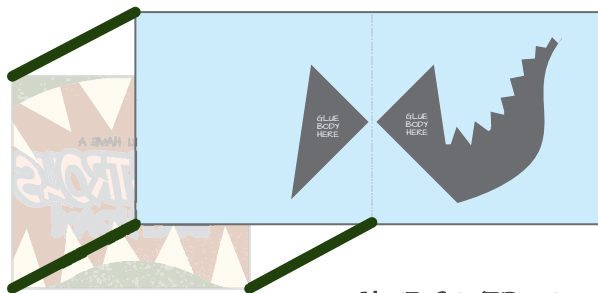


BASE



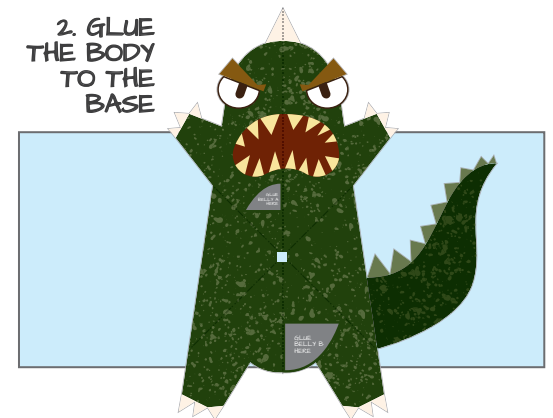
WHAT YOU NEED:

A pair of scissors or craft knife or any cutting tool that you have. Glue.
Any scoring tool.
And to print out the template in cardstock or any paper thicker than normal copier paper(at least 160gsm)

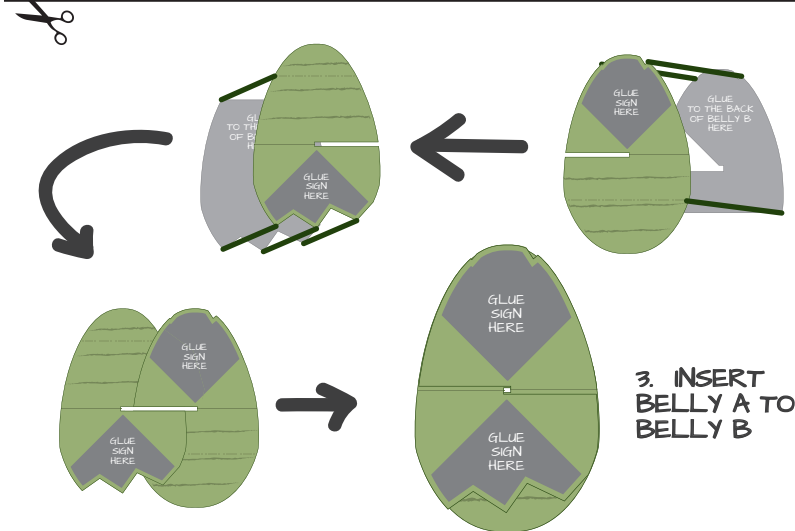
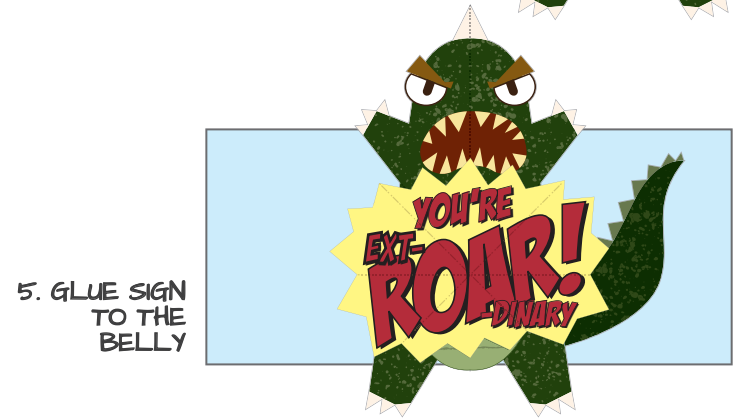
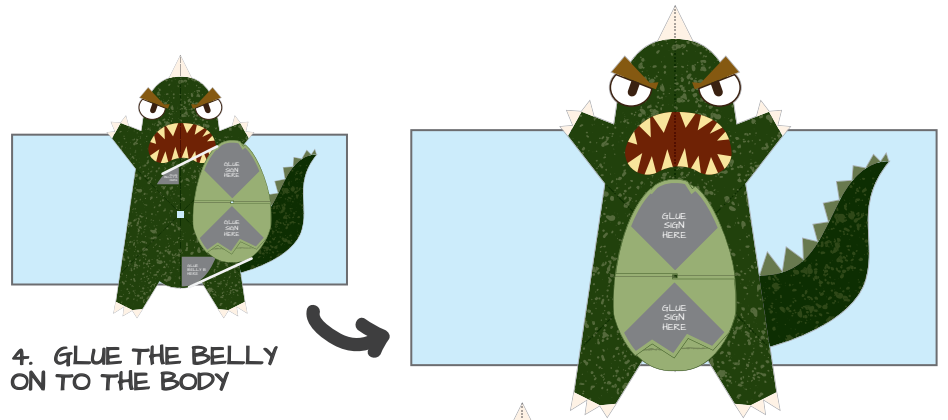


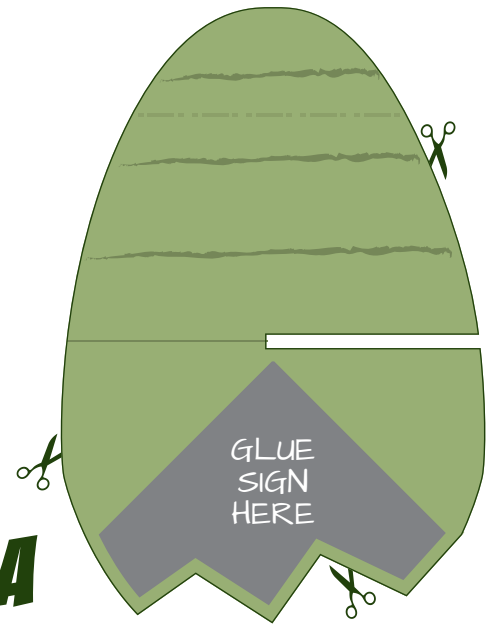
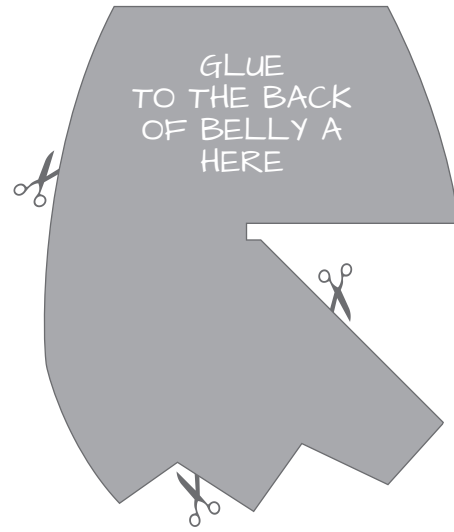
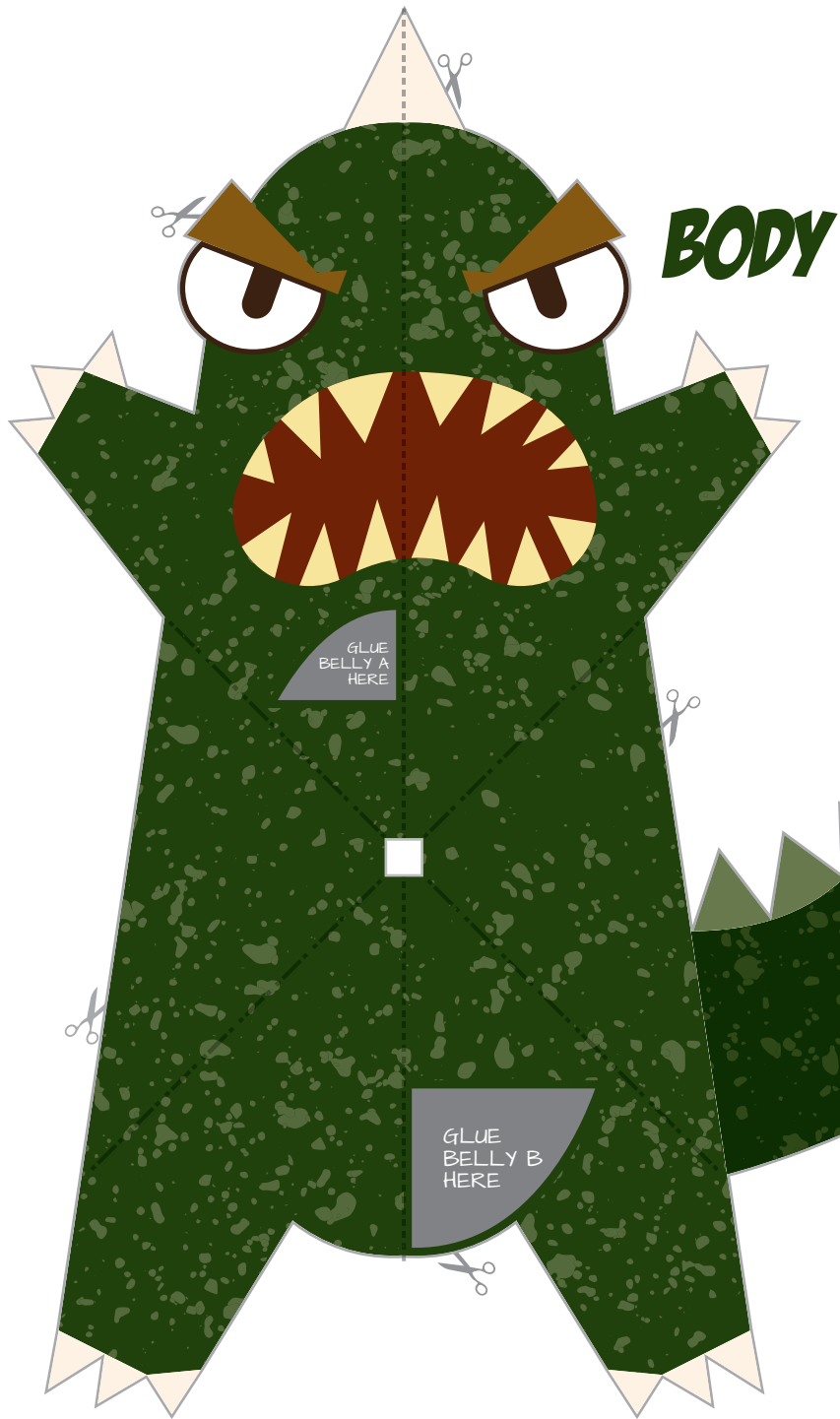
1. GLUE COVER TO THE BACK SIDE OF THE BASE

2. GLUE THE BODY TO THE BASE

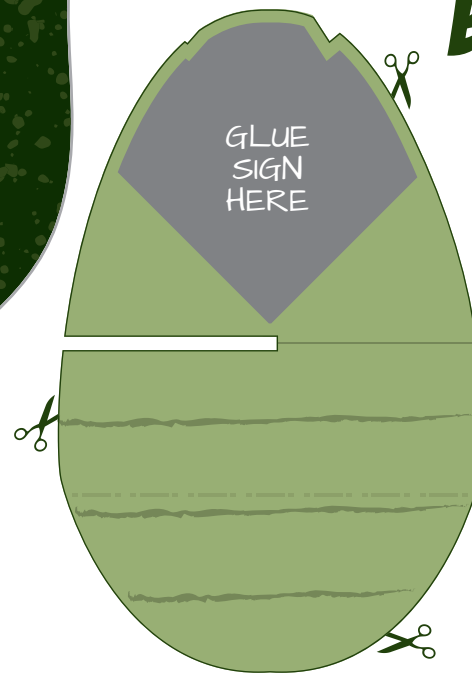


COVER





BELLY A



BELLY B

