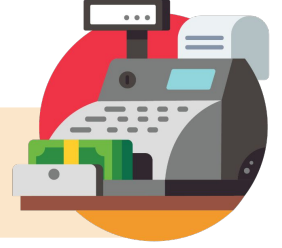


# Unit Prices: Matching



Find each unit price. Then write the corresponding letter on the line.

\_\_\_\_\_ \$10.00 for 2 pounds of dog food

\_\_\_\_\_ 20 ounces of grapes for \$5.00

\_\_\_\_\_ \$8.95 for 5 liters of soda

\_\_\_\_\_ 9 ounces of chocolate for \$9.99

\_\_\_\_\_ \$6.00 for 4.8 pounds of sugar

\_\_\_\_\_ 7.5 liters of iced tea for \$12.00

\_\_\_\_\_ \$5.31 for 9 pounds of bananas

\_\_\_\_\_ 12 ounces of fruit salad for \$8.40

\_\_\_\_\_ \$1.99 for 0.5 liters of dish soap

\_\_\_\_\_ 1.3 pounds of ground beef for \$9.23

\_\_\_\_\_ \$5.60 for 0.8 ounces of ground cinnamon

\_\_\_\_\_ 1.8 liters of fruit juice for \$3.24

a. \$1.80 per liter

b. \$1.11 per ounce

c. \$3.98 per liter

d. \$5.00 per pound

e. \$1.60 per liter

f. \$0.59 per pound

g. \$0.25 per ounce

h. \$7.00 per ounce

i. \$1.25 per pound

j. \$0.70 per ounce

k. \$7.10 per pound

l. \$1.79 per liter