



Easter Spring Printables

By Jess Deacon



Print out and build your own festive papercraft decorations this Easter! The series includes: An ornate Easter egg table centrepiece and a colourful Easter egg wreath, with instructions on how to construct each one.

#1 Easter Egg Centrepiece



Easter Spring Printables

By Jess Deacon

#1 Easter Egg Centrepiece instructions

1. Cut out all parts. Use a craft knife for best results. You can either use the printed pieces directly, or use them as templates to cut the parts from coloured paper. If you choose to cut the parts from coloured paper, you can disregard parts 17, 19, 21, 24, 26, 28 and one of the part 29s, as they serve only to cover the visible white sides of the printed paper.
2. Carefully fold along all fold lines (see key for direction of folds). Before folding it is recommended to score the line lightly with a craft knife or a ballpoint pen that no longer has ink in it. This will make folding easier and more precise.
3. Take part 1 and bend around to make a circular funnel shape. Glue tab 1A behind side 1B.
4. Take part 2 and bend around to make a circle. Glue tab 2A behind side 2B. Then add glue to the teeth of part 2 and stick to the inside of part one (side 1C) with the join at the back.
5. Glue part 3 on top of part 1, so that side 3C lines up with side 1C.
6. Glue part 4 on top of part 3, so that side 4C lines up with side 3C.
7. Glue part 5 on top of part 4, so that side 5C lines up with side 4C.
8. Glue part 6 on top of part 5, so that side 6C lines up with side 5C.
9. Glue part 7 on top of part 6, so that side 7C lines up with side 6C.
10. Glue part 8 on top of part 7, so that side 8C lines up with side 7C.
11. Glue part 9 on top of part 8, so that side 9C lines up with side 8C.
12. To make the flowers that will be attached to part 2, Take one of the part 10s and glue tab 10A behind side 10B. Repeat this action with all the part 10s.
13. Take each of the hexagonal part 11s, and glue onto the bottoms of the part 10s to make the bases of the flowers.
14. Take one of the part 12s and glue tab 12A behind side 12B. Repeat this action with all the part 12s. Then glue each of these part 12s inside the part 10s.
15. Take one of the part 13s and glue tab 13A behind side 13B. Repeat this action with all the part 13s. Then glue each of these part 13s inside the part 12s.



Easter Spring Printables

By Jess Deacon

#1 Easter Egg Centrepiece instructions cont.

16. Take one of the part 14s and add a spot of glue to the reverse of the circular centre. Then glue this into the centre of the flower, bending the outer circles inwards so that they stick out. Repeat this action with the other part 14s to complete the flowers
17. Attach the flowers to part 2, gluing the base (part 11) onto the hexagonal markers.
18. To make the egg - You can choose to cut out the decorative pattern and lay another coloured or textured paper behind each panel (as shown in the photo). Metallic or glitter paper works especially well for this. Or if you prefer, you can just use the printed design to save time.
19. Once you have prepared the panels of the egg (part 15s), Take one of the part 15s and glue the lower half of the teeth (15B) behind side 15C. Do this a few teeth at a time, starting from the middle and working outwards. Hold each set until glued in place to avoid the pieces sliding apart before the glue has fixed. Repeat this action with all of the part 15s, leaving the upper half of the teeth (the pointier end of the egg) unstuck for now.
20. Now attach each of the part 15s to another part 15, gluing teeth 15D behind side 15A of another part 15 until all part 15s are joined, forming the bottom half of the egg.
21. Next glue the upper half of the teeth behind each adjacent side to form the upper half of the egg. Do this a few teeth at a time, starting from the middle and working outwards. Hold each set until glued in place to avoid the pieces sliding apart before the glue has fixed.
22. To make the leaves - Start by taking one of the part 17s and, adding glue to the reverse, stick onto the unprinted side of one of the part 16s to make the leaf coloured on both sides. Repeat this action with all of the part 17s / 16s.
23. Then do the same with parts 18 & 19
24. Take one of the part 18/19s and, adding glue to the unprinted side of the stem attach to the bottom of the egg, lining up the centre fold line of the leaf to the edge of one of the egg panels. Repeat this action with all of the part 18/19s.
25. Take one of the part 16/17s and, adding glue to the unprinted side of the stem attach to the bottom of the egg, lining up the centre fold line of the leaf to the middle of one of the egg panels. Repeat this action with all of the part 16/17s.
26. Now place the egg onto the podium. You can glue it in place if you wish, or leave it unstuck to hide chocolate eggs inside!



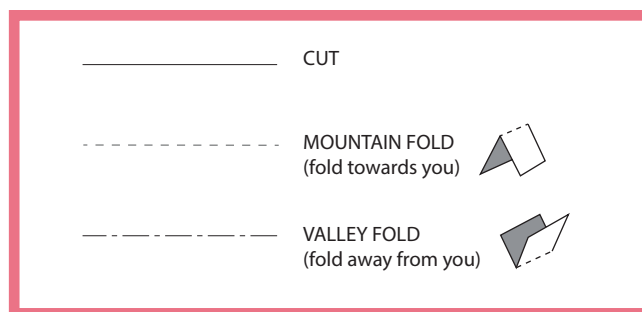
Easter Spring Printables

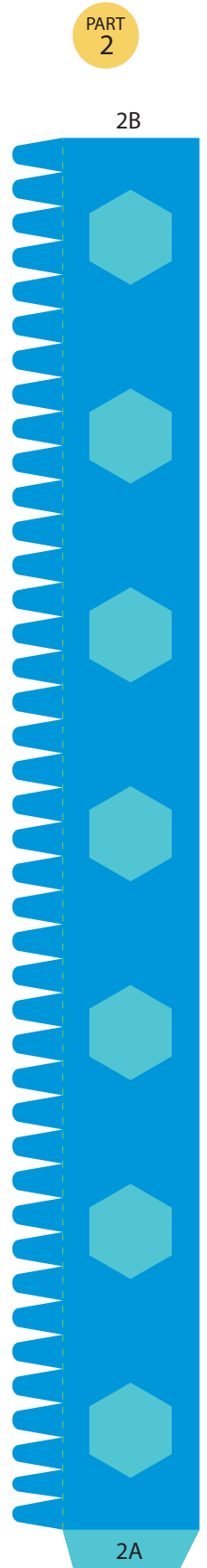
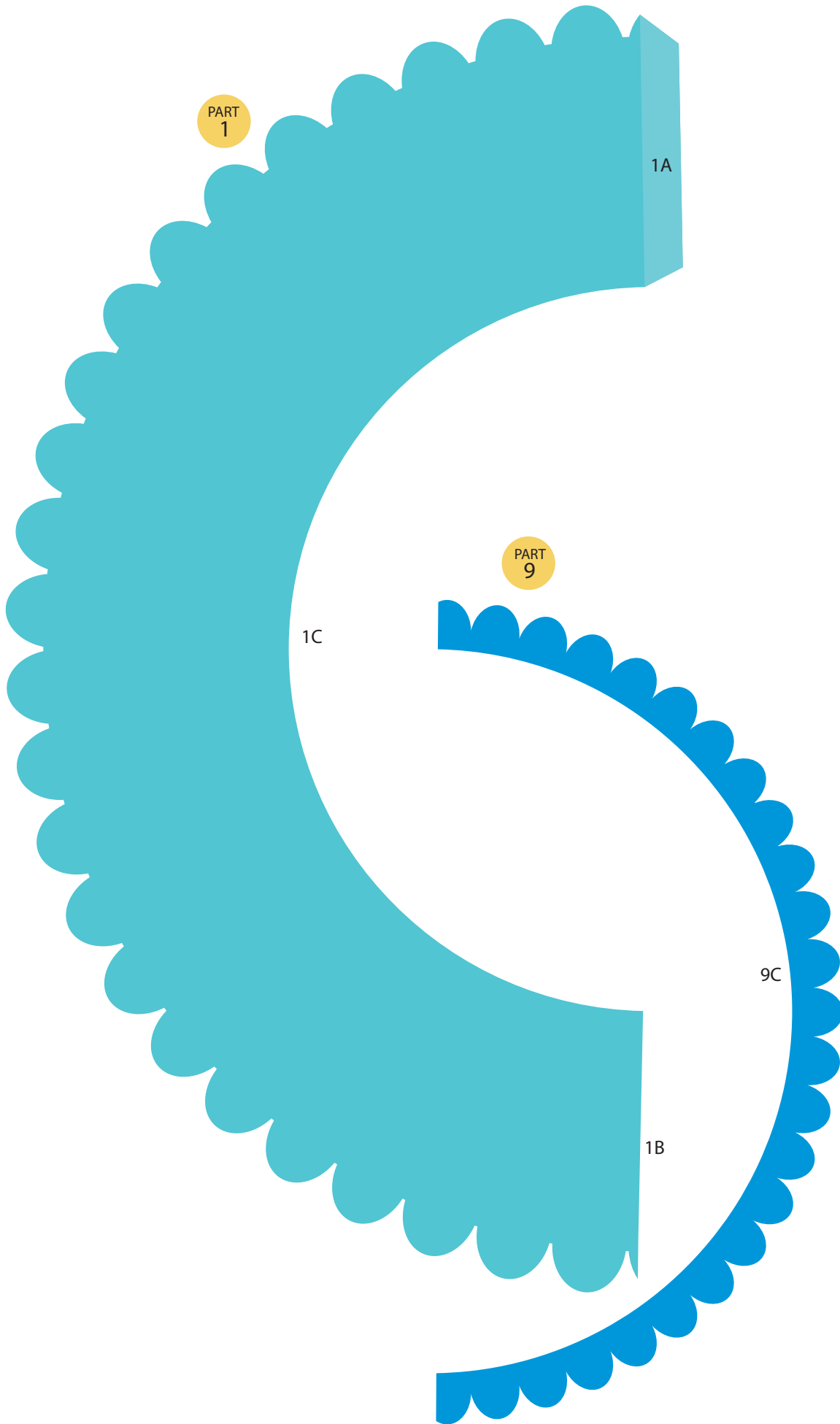
By Jess Deacon

#1 Easter Egg Centrepiece instructions cont.

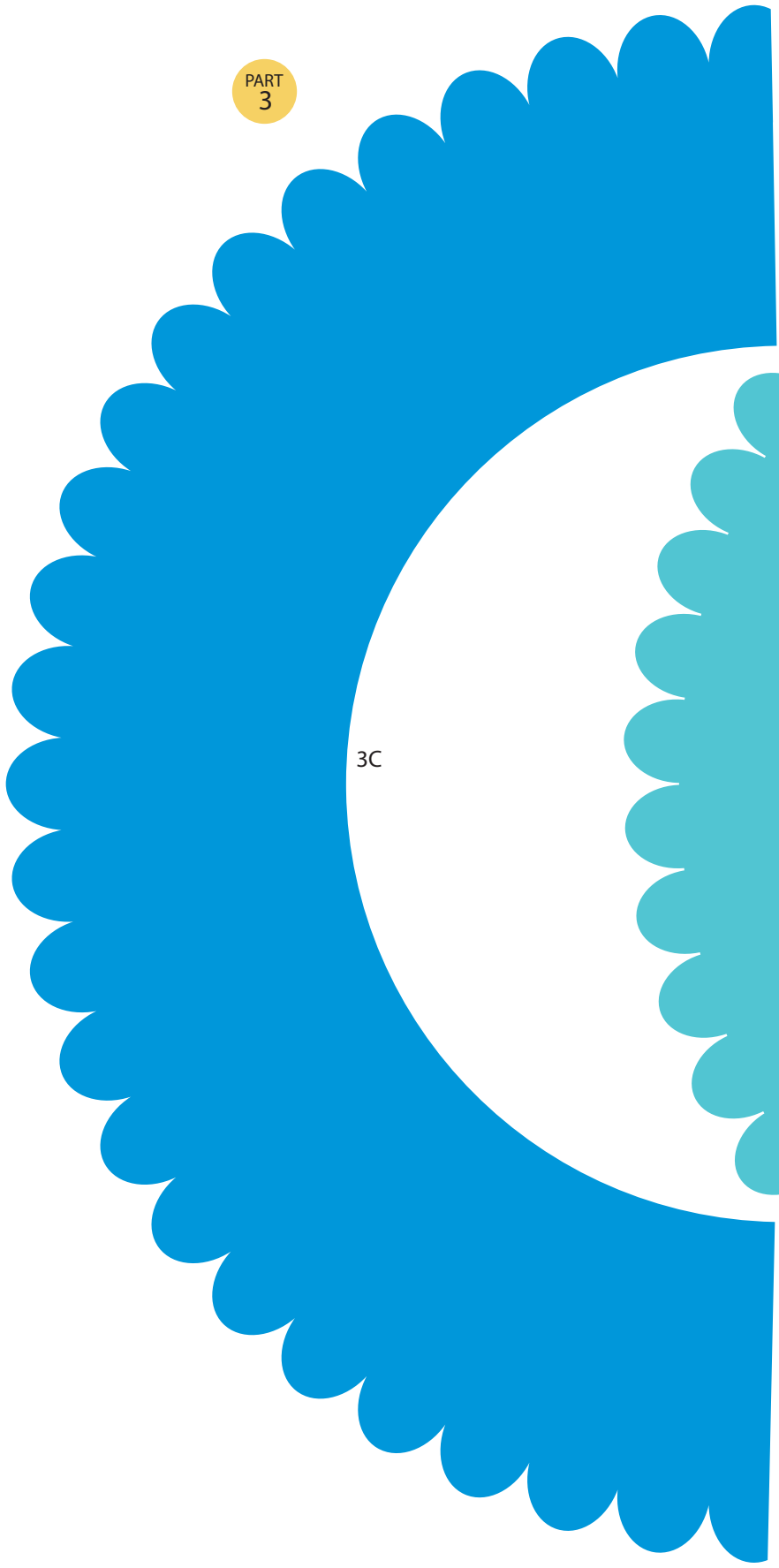
27. Finally, make the small flower that will sit on top of the egg. To do this, take part 20 and glue tab 20A to the inside of side 20B. Then take part 21 and glue to the inside of the flower to cover the white side.
28. Take part 22, and glue onto the bottom of part 20/21 to make the base of the flower.
29. Take part 23 and glue tab 23A to the inside of side 23B. Then take part 24 and glue to the inside of the flower to cover the white side. Glue inside part 20/21.
30. Take part 25 and glue tab 25A to the inside of side 25B. Then take part 26 and glue to the inside of the flower to cover the white side. Glue inside part 23/24.
31. Take part 28 and glue onto the white side of part 27. Then twist into a spiral, gluing tab 27A to the outside to fix the spiral in place. Glue inside part 25/26.
32. Take parts 29 and glue the 2 pieces back to back so that it is coloured on both sides. Then, add a spot of glue to the circular centre and glue this into the centre of the flower, bending the outer circles inwards so that they stick out of the centre of the flower.
33. To finish, add some glue to the hexagonal underside of the flower and attach to the top of the egg.

KEY



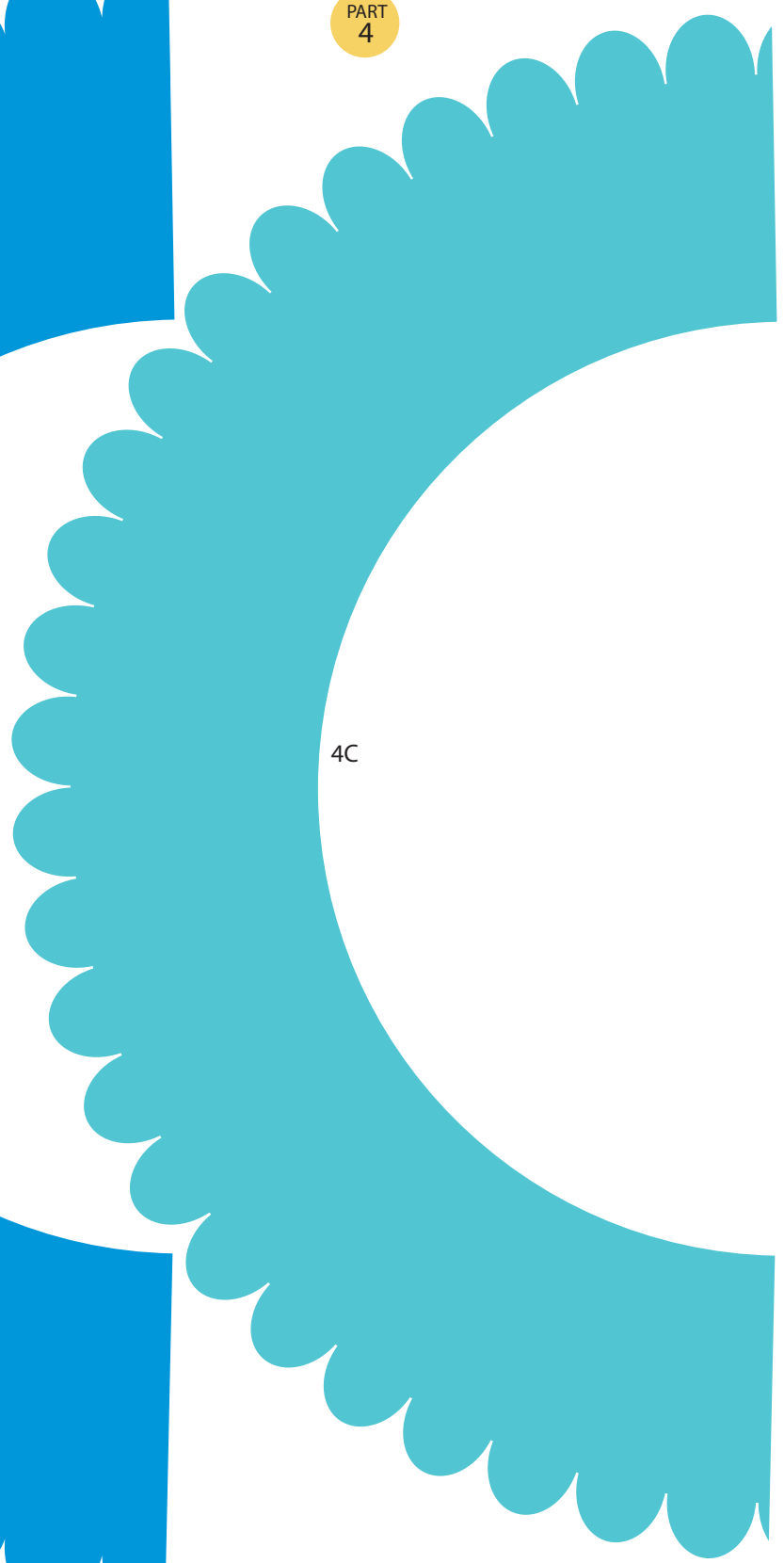


PART
3



3C

PART
4



4C

PART
5

5C

PART
6

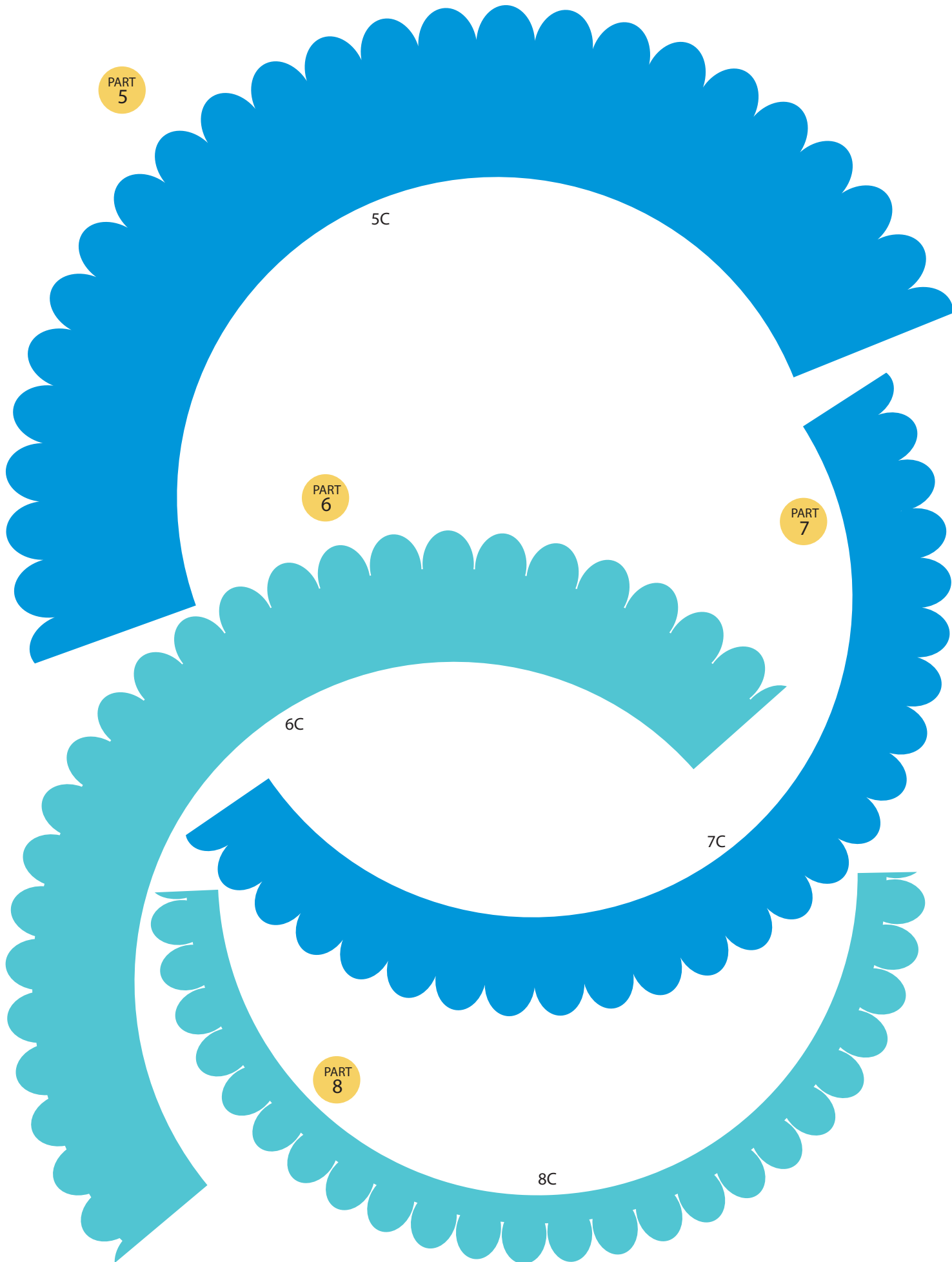
PART
7

6C

7C

PART
8

8C

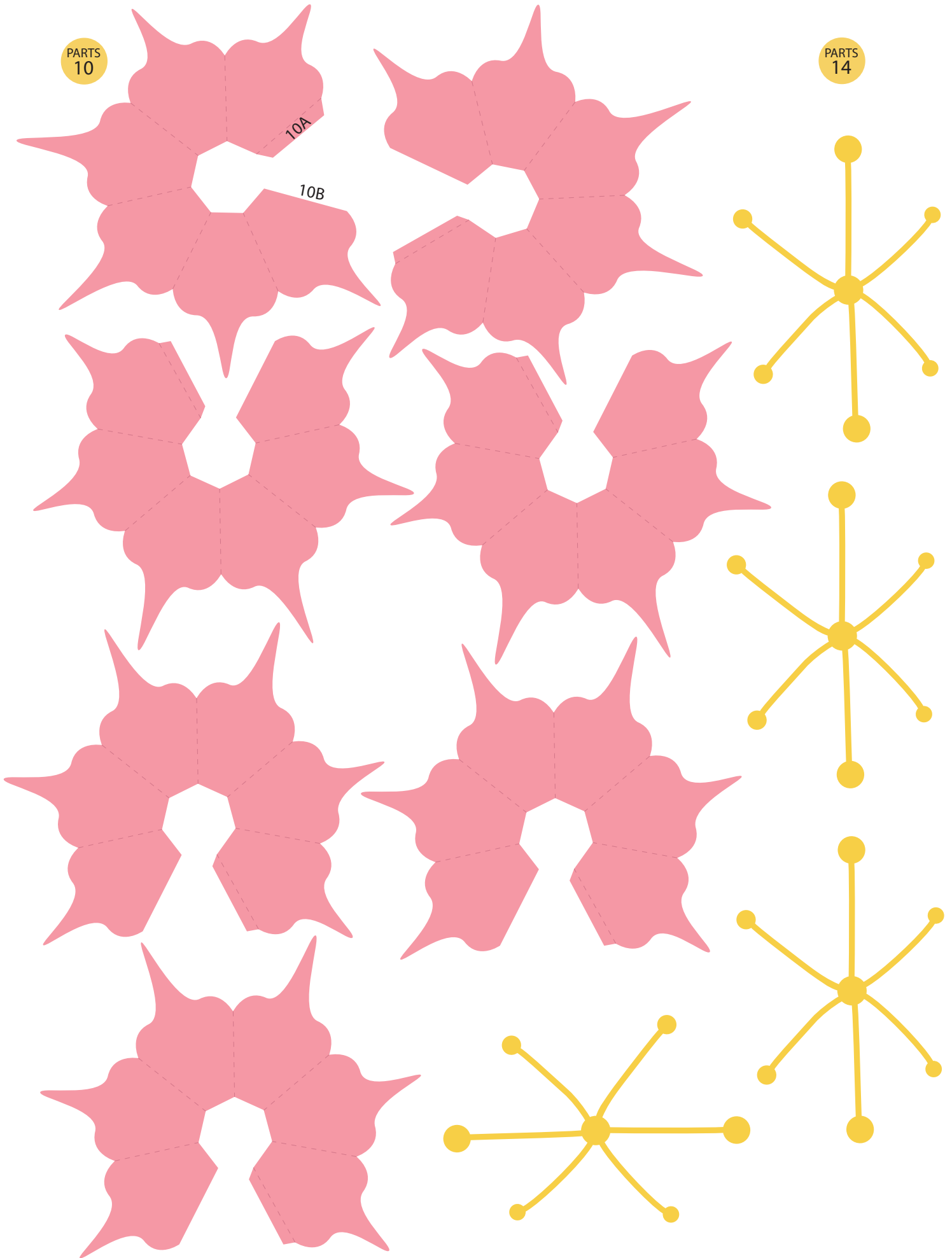


PARTS
10

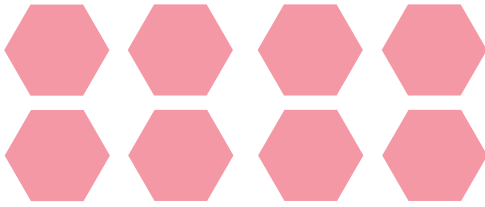
10A

10B

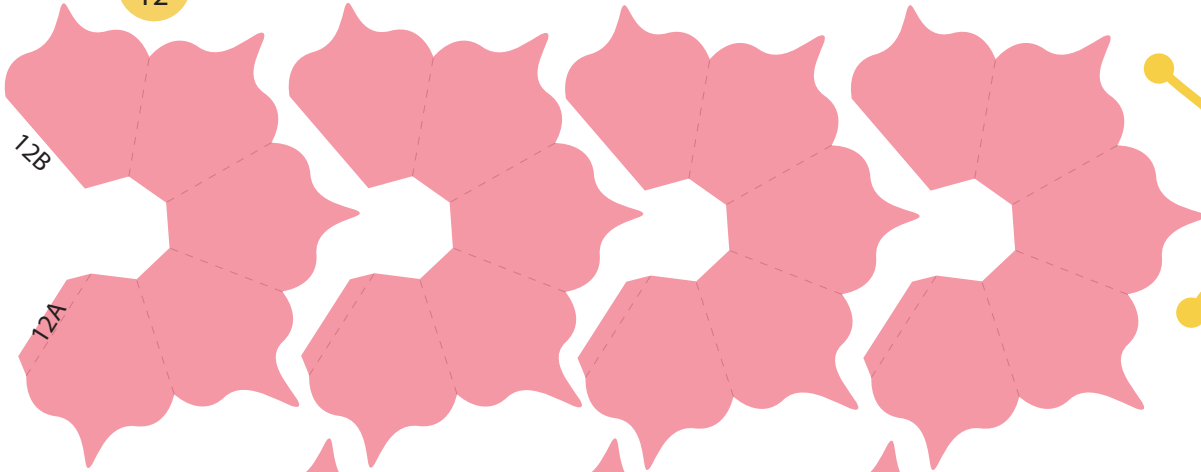
PARTS
14



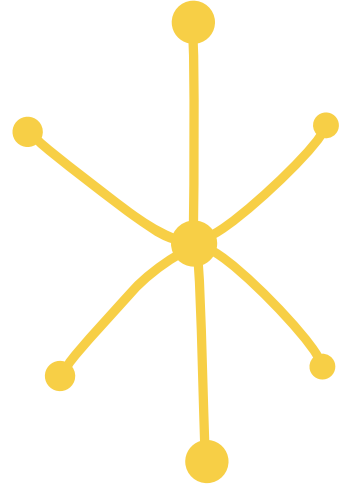
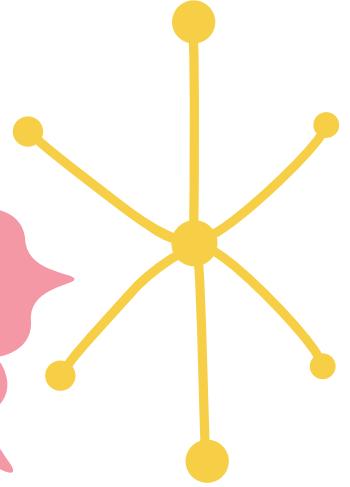
PARTS
11



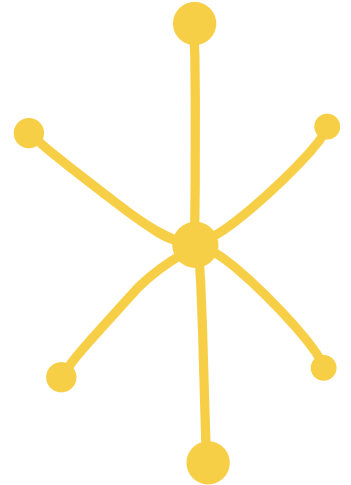
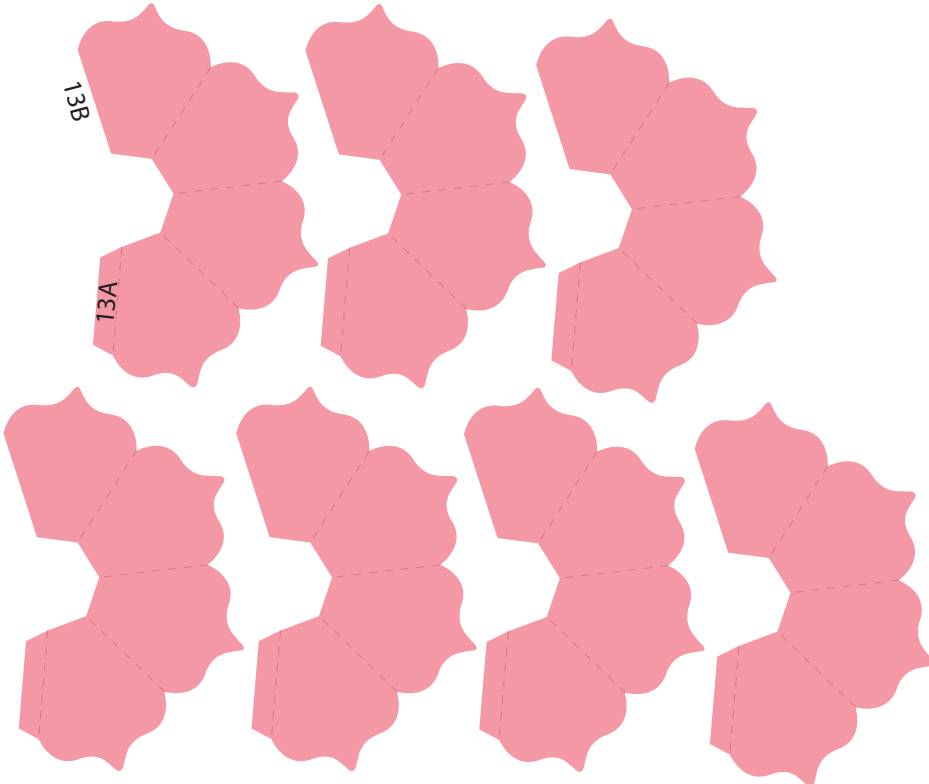
PARTS
12

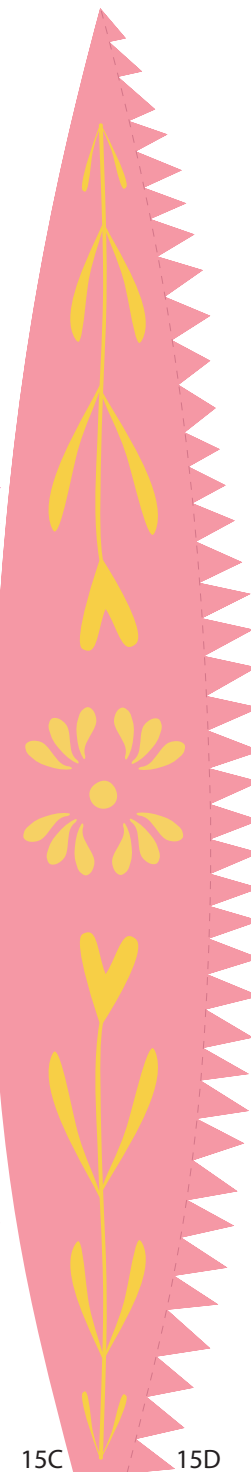
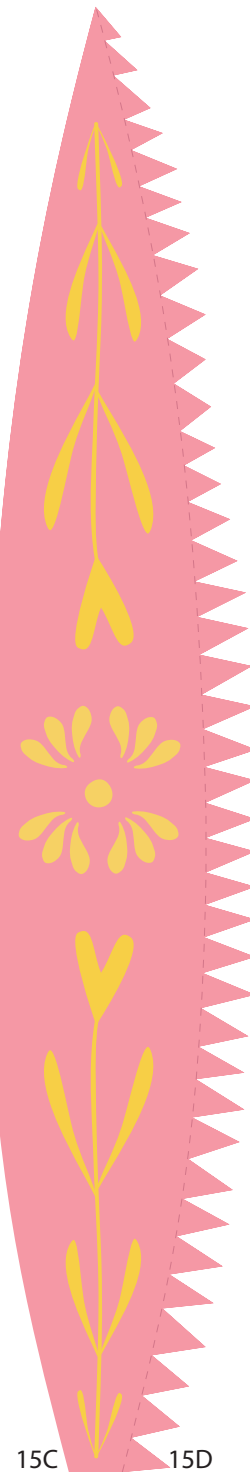


PARTS
14



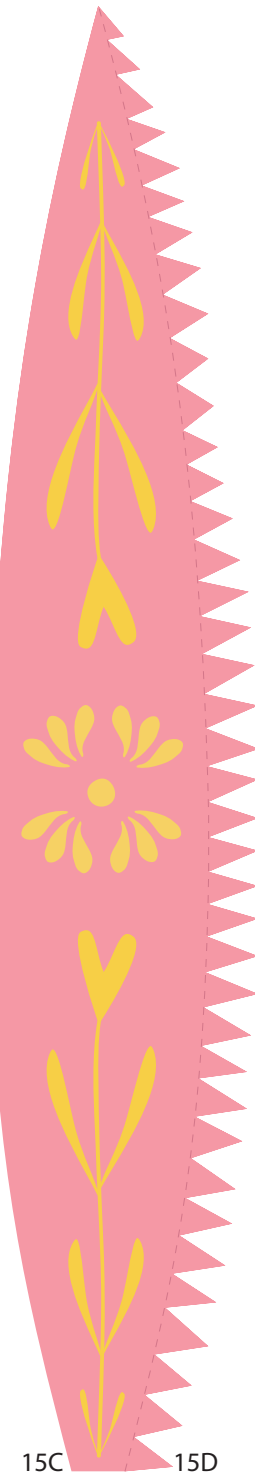
PARTS
13







15B

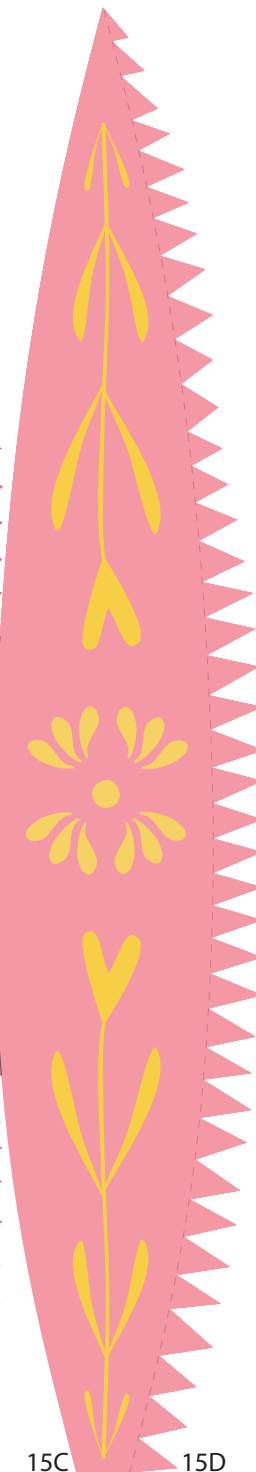


15D



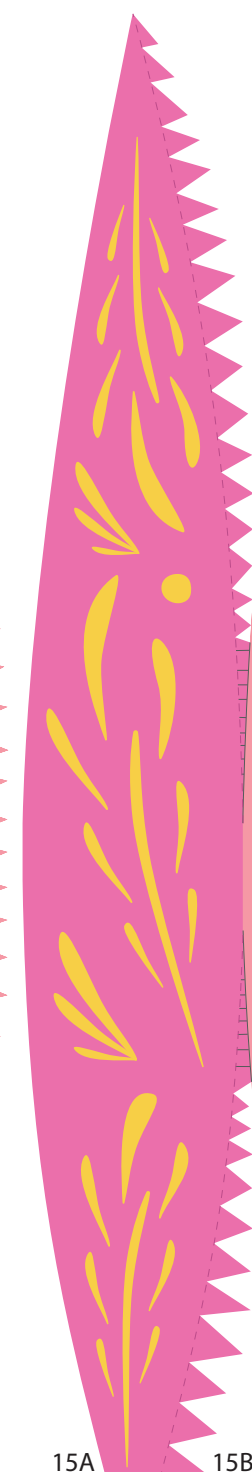
15A

15B



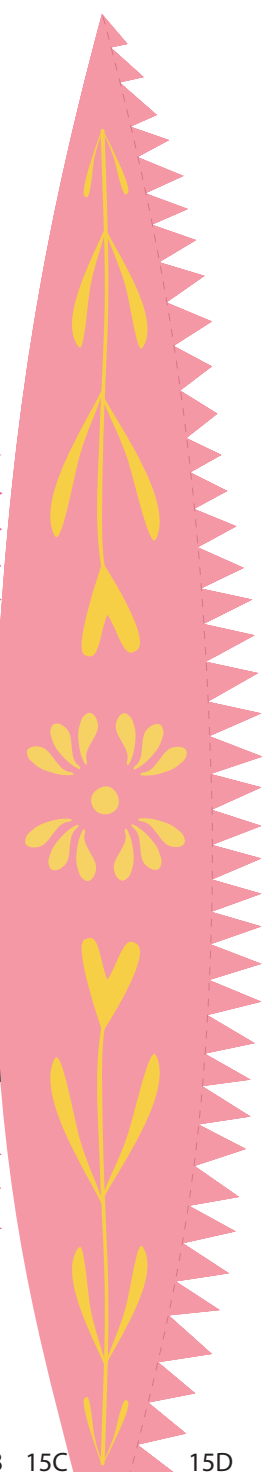
15C

15D



15A

15B

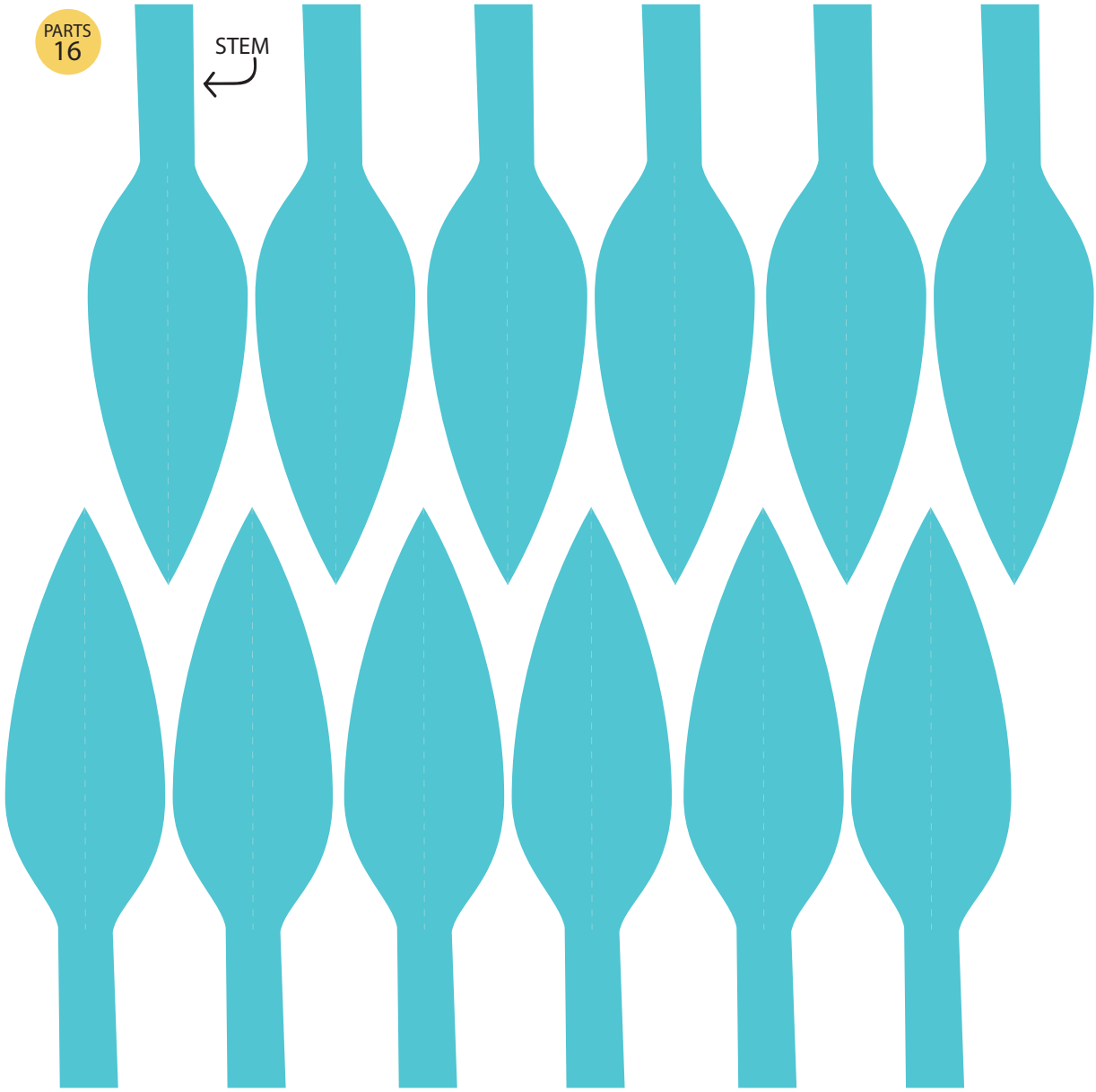


15C

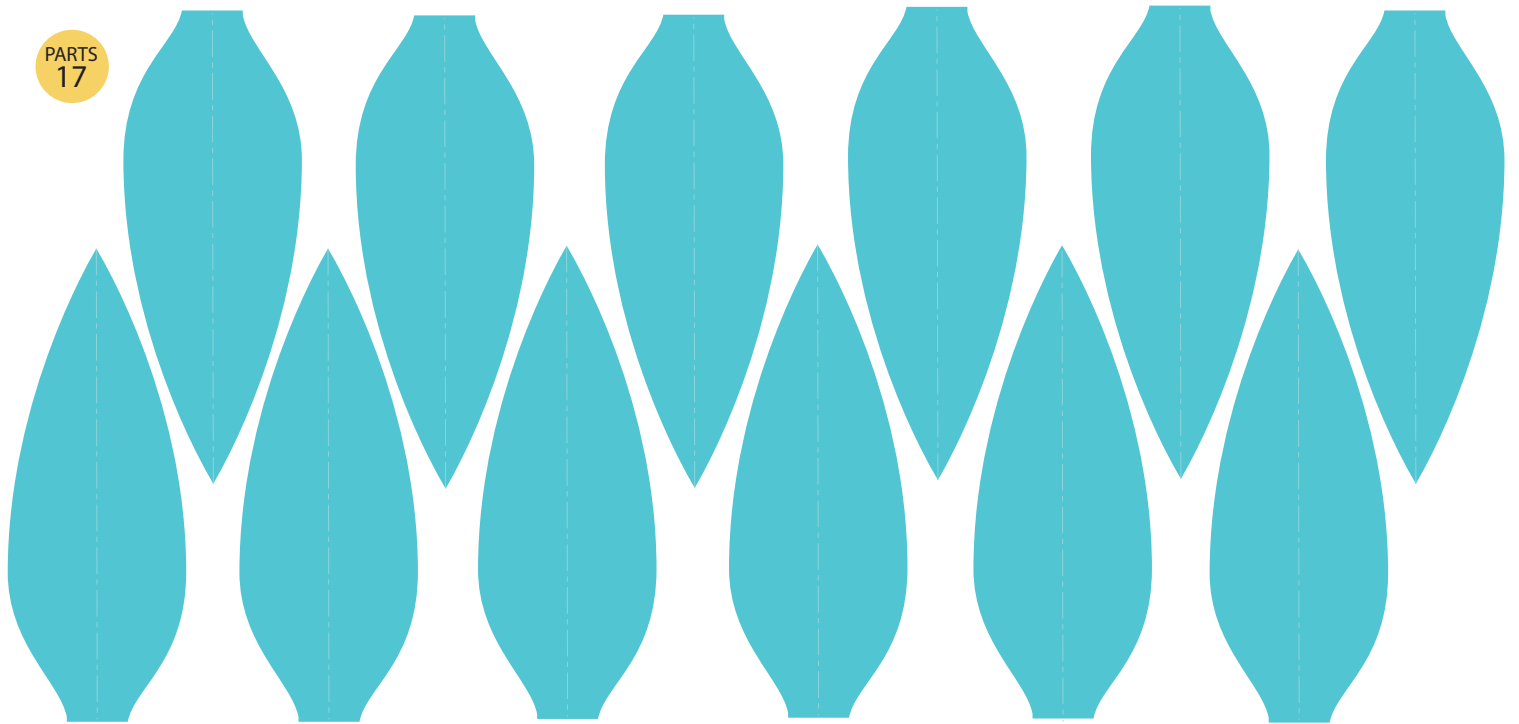
15D

PARTS
16

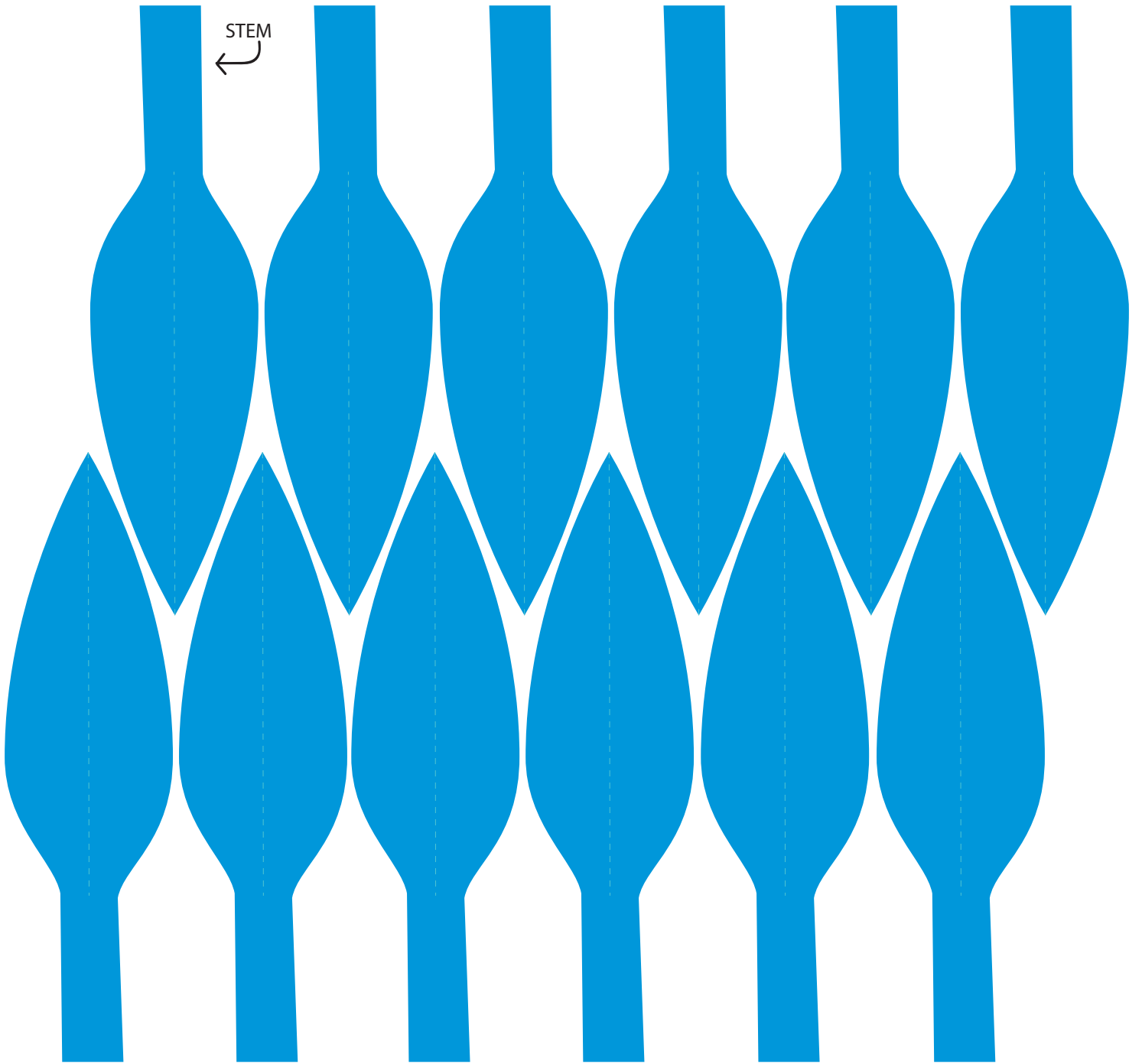
STEM
←



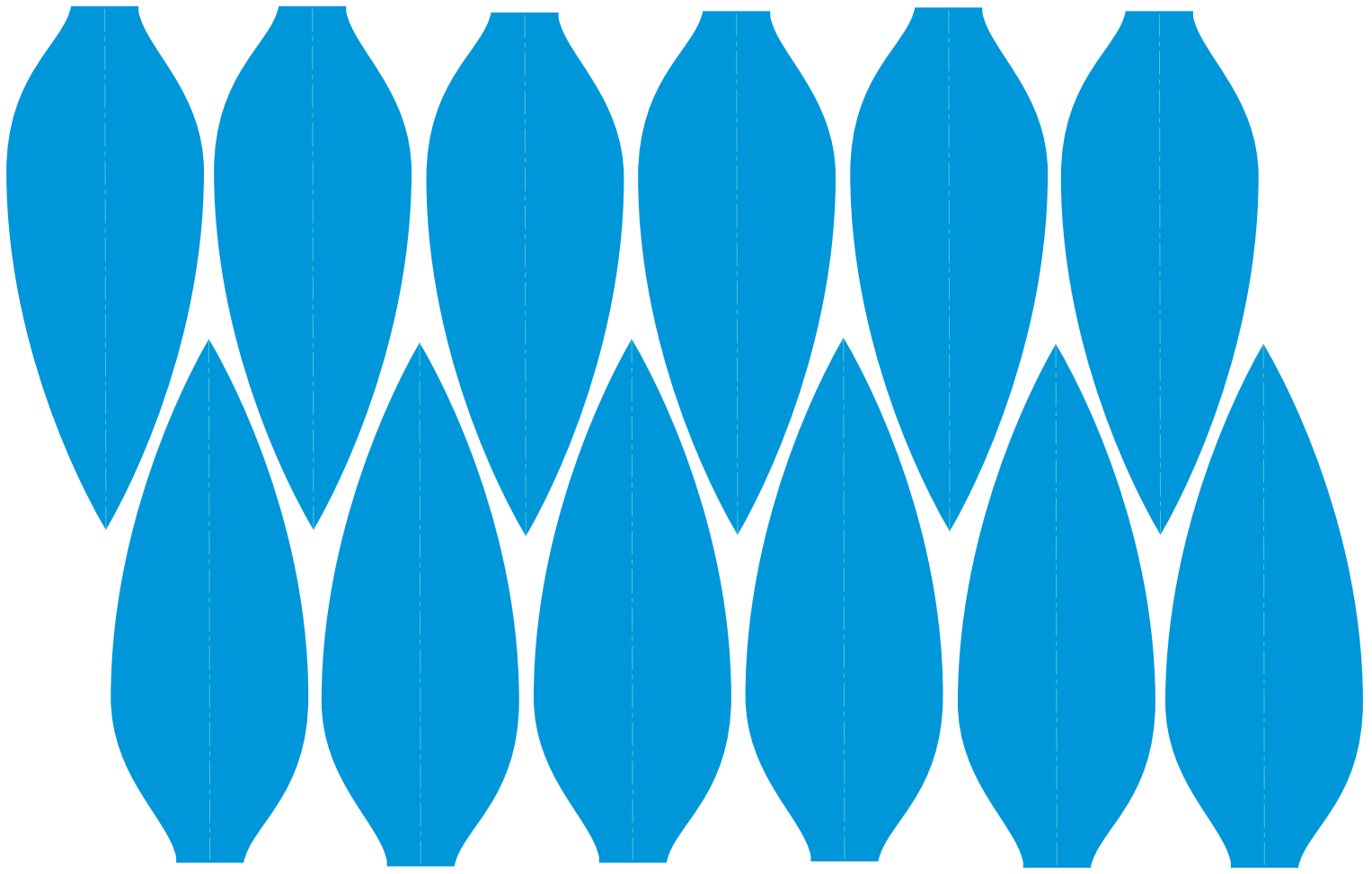
PARTS
17



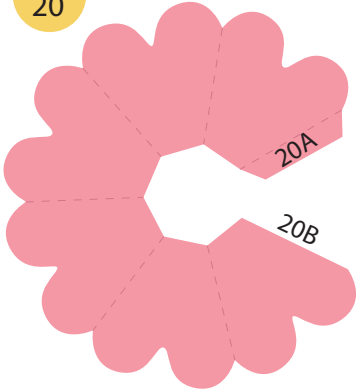
STEM
←



PART 19



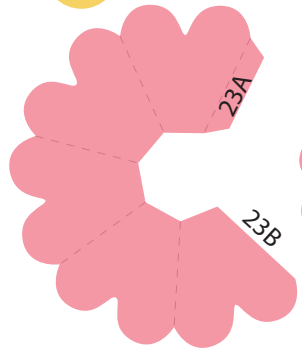
PART 20



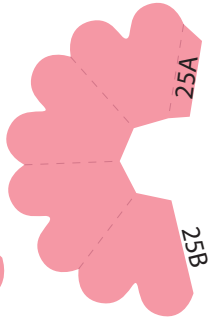
PART 22



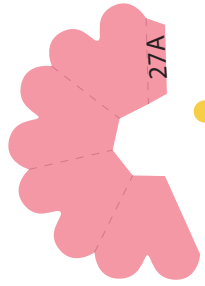
PART 23



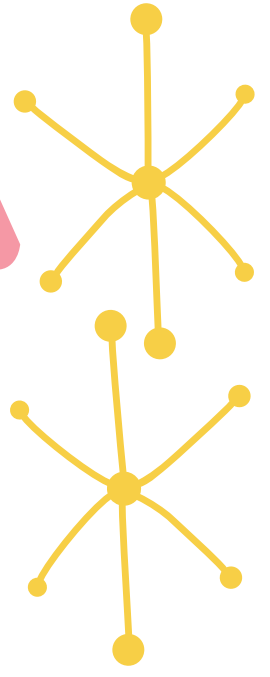
PART 25



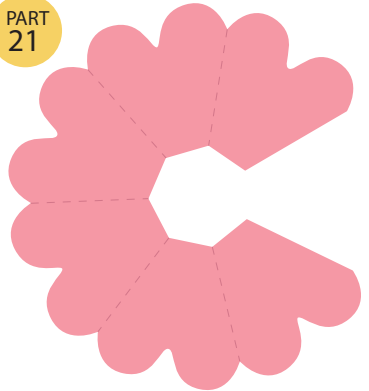
PART 27



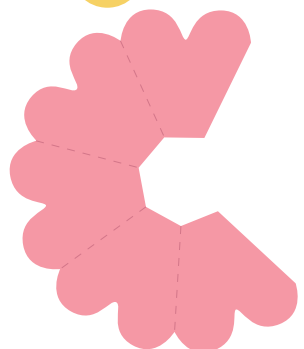
PARTS 29



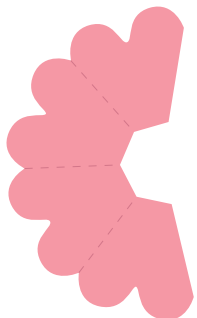
PART 21



PART 24



PART 26



PART 28

