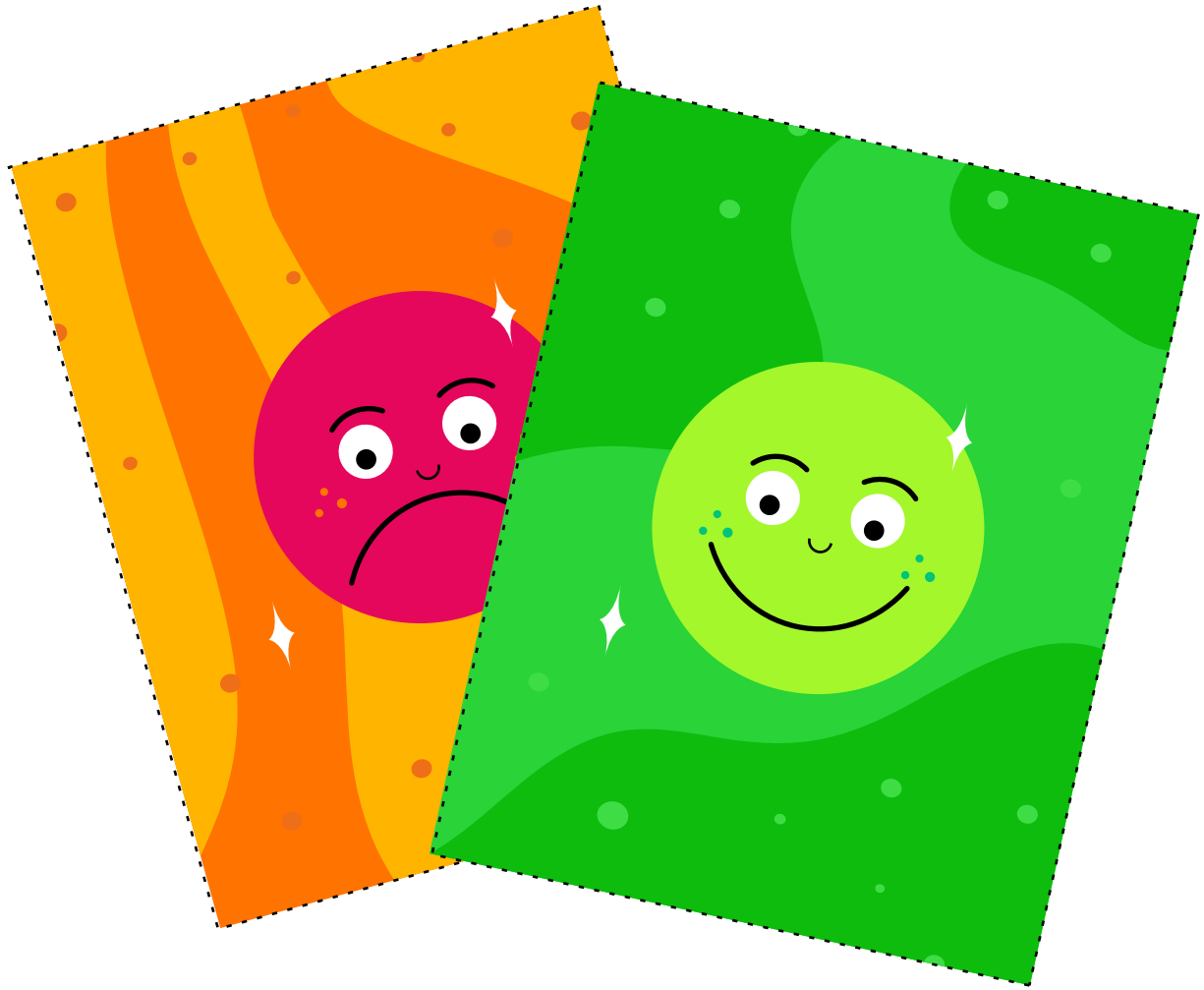


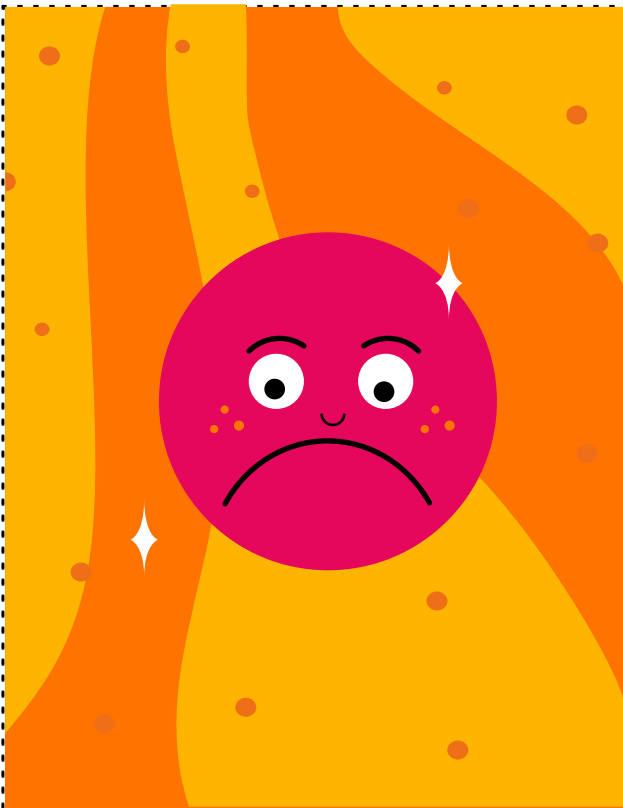
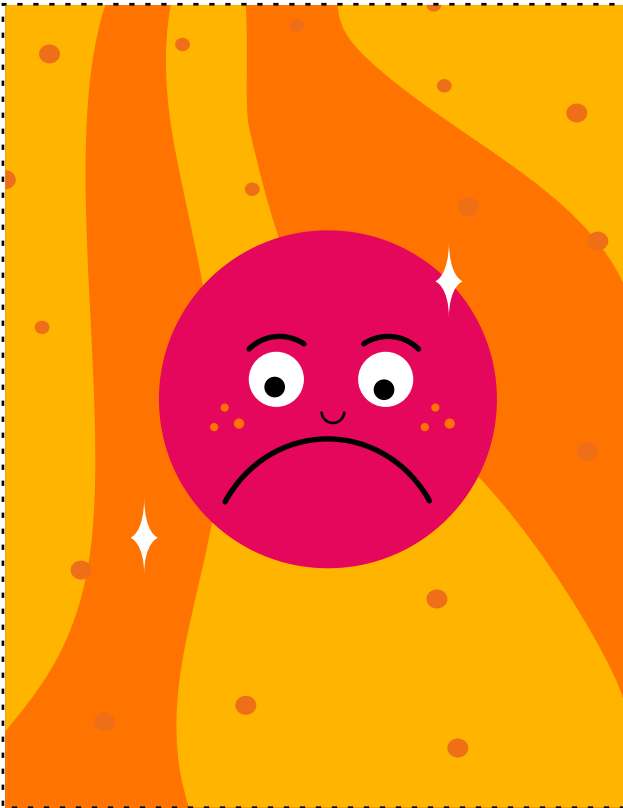
**INSPIRATION
PRINTASTIC**
BOARD GAMES



CARDS

PIECES







A green rectangular header with several small yellow dots. In the center is a smiling green face with large eyes, a wide smile, and a small star on its forehead.

Below the header is a large rectangular area with a dashed border, containing five horizontal dashed lines for writing.

An orange rectangular header with several small brown dots. In the center is a smiling pink face with large eyes, a wide smile, and a small star on its forehead.

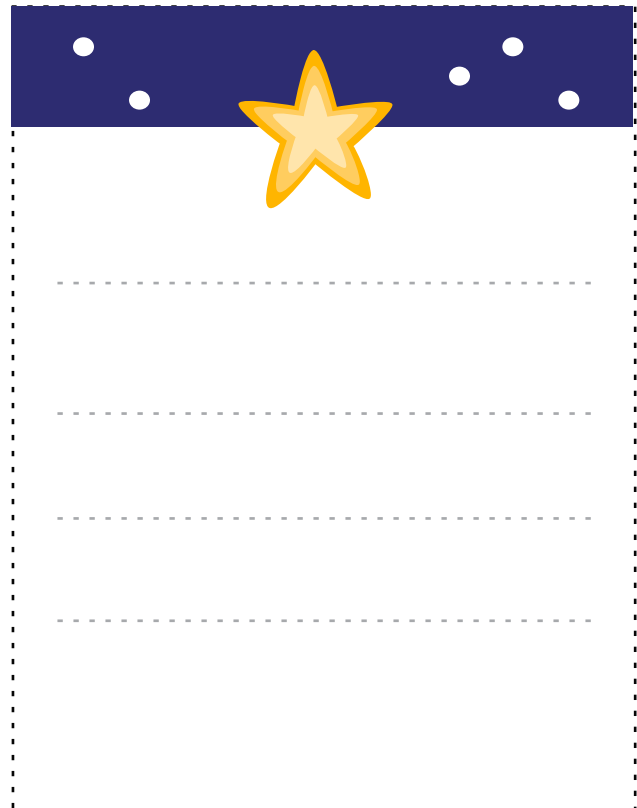
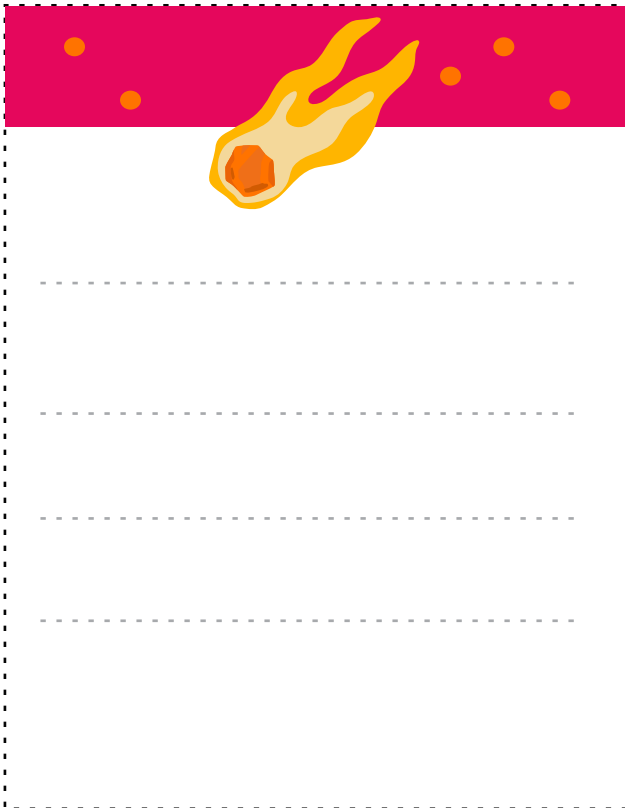
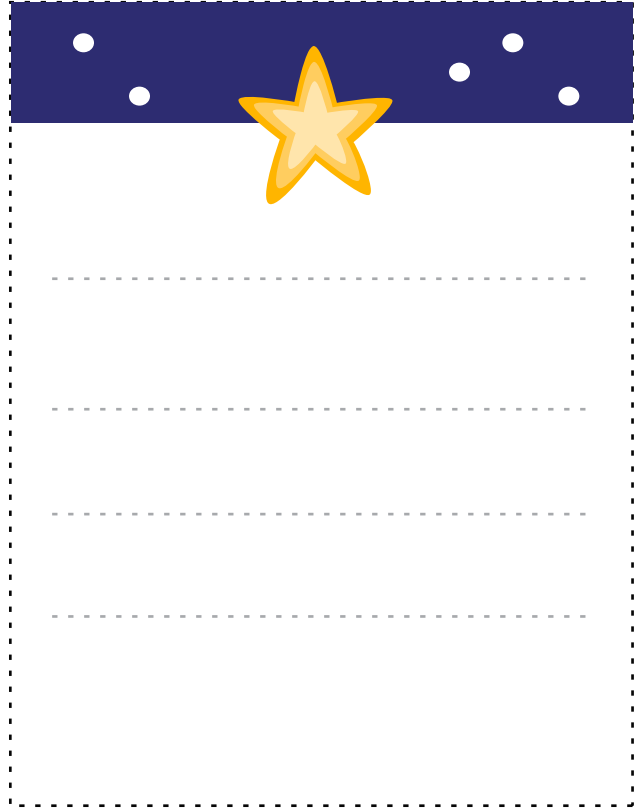
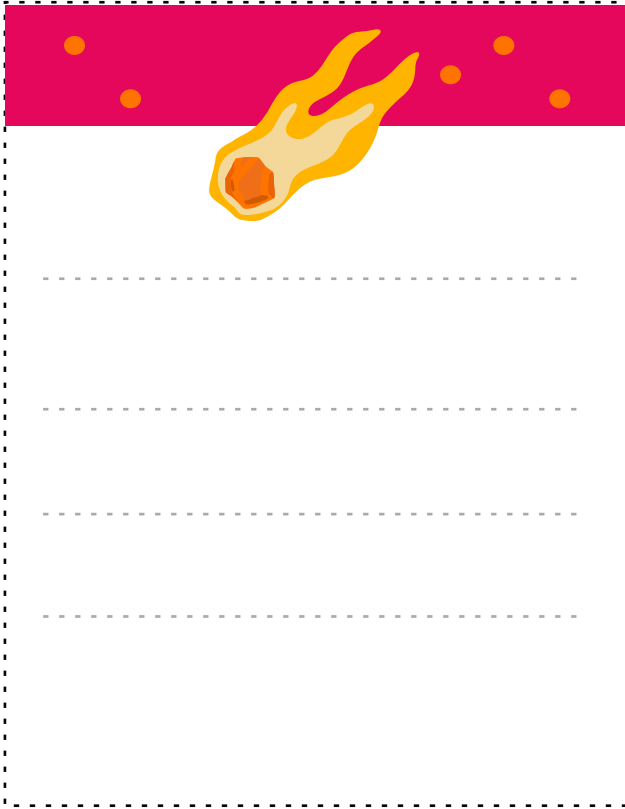
Below the header is a large rectangular area with a dashed border, containing five horizontal dashed lines for writing.

A green rectangular header with several small yellow dots. In the center is a smiling green face with large eyes, a wide smile, and a small star on its forehead.

Below the header is a large rectangular area with a dashed border, containing five horizontal dashed lines for writing.

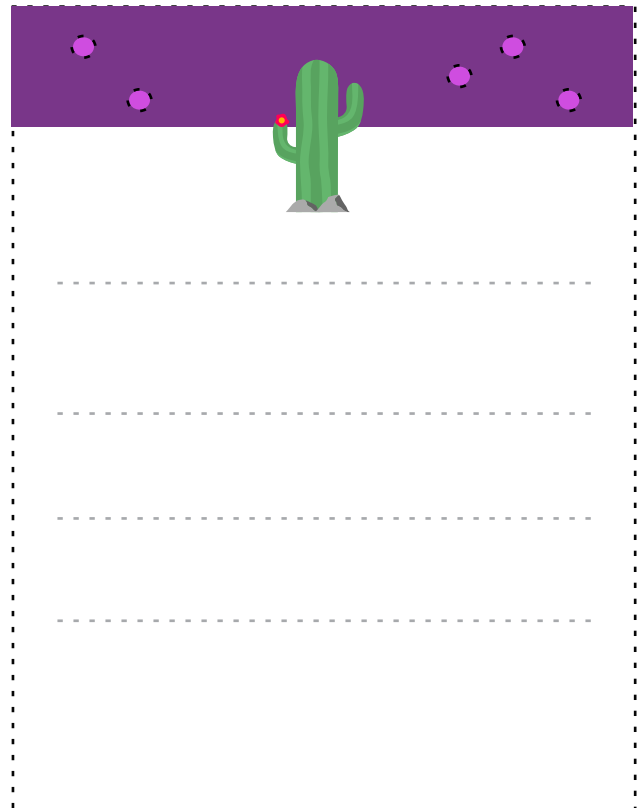
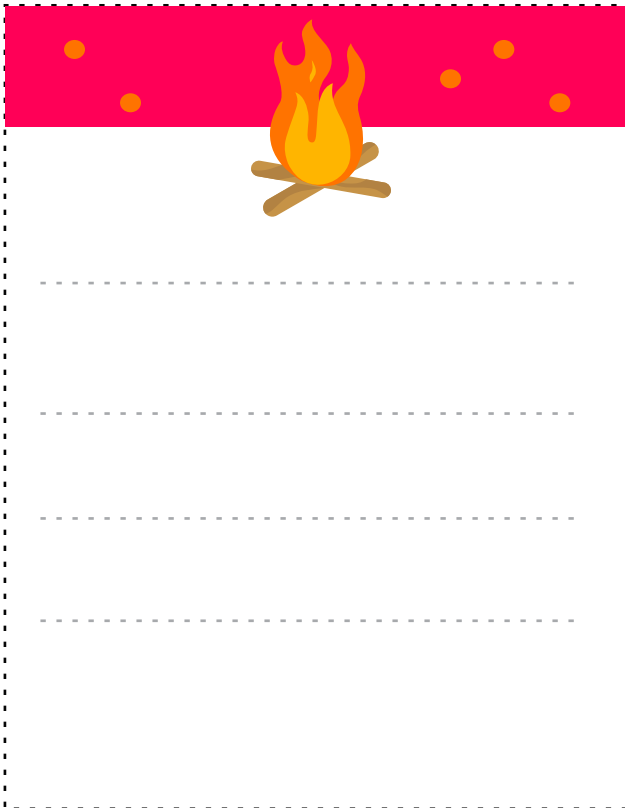
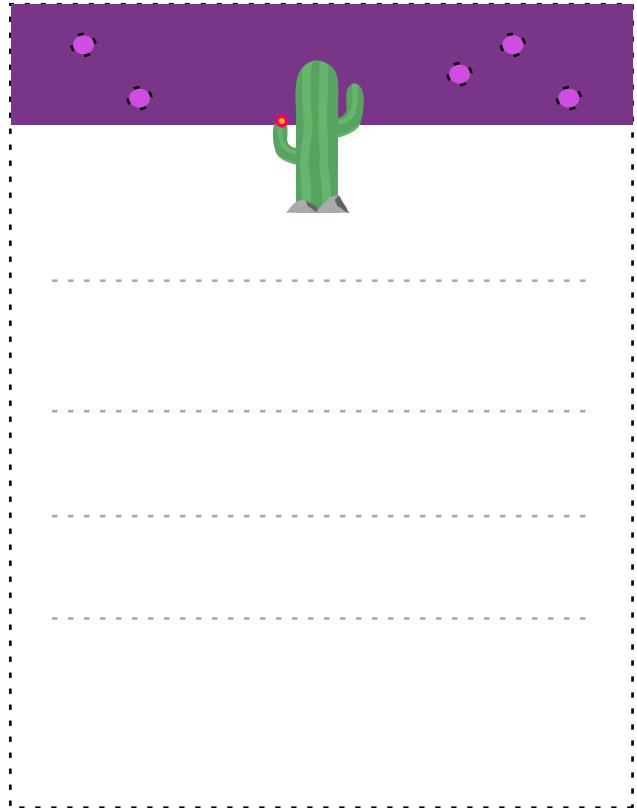
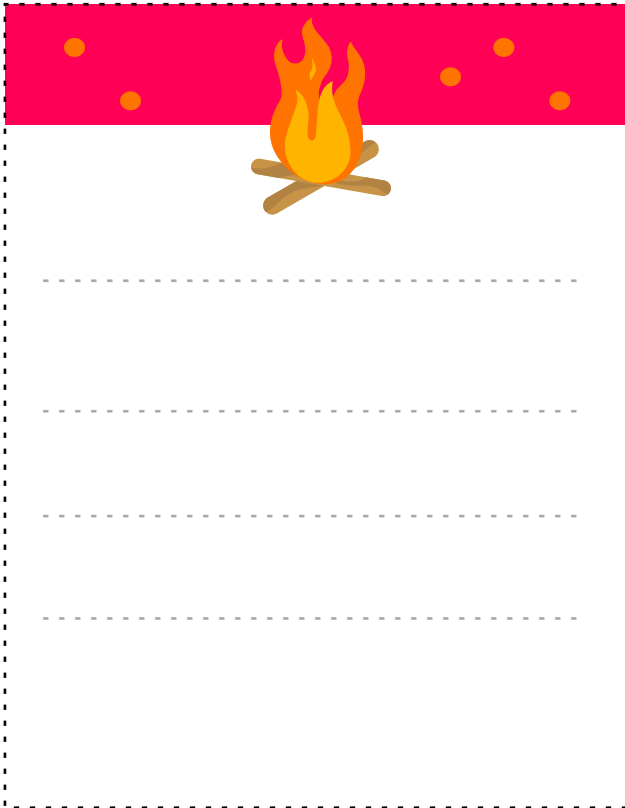
An orange rectangular header with several small brown dots. In the center is a smiling pink face with large eyes, a wide smile, and a small star on its forehead.

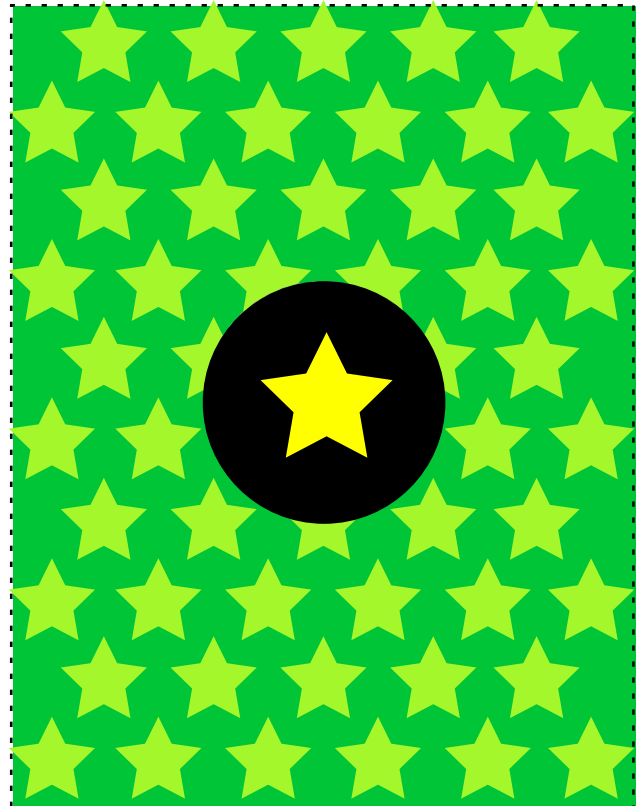
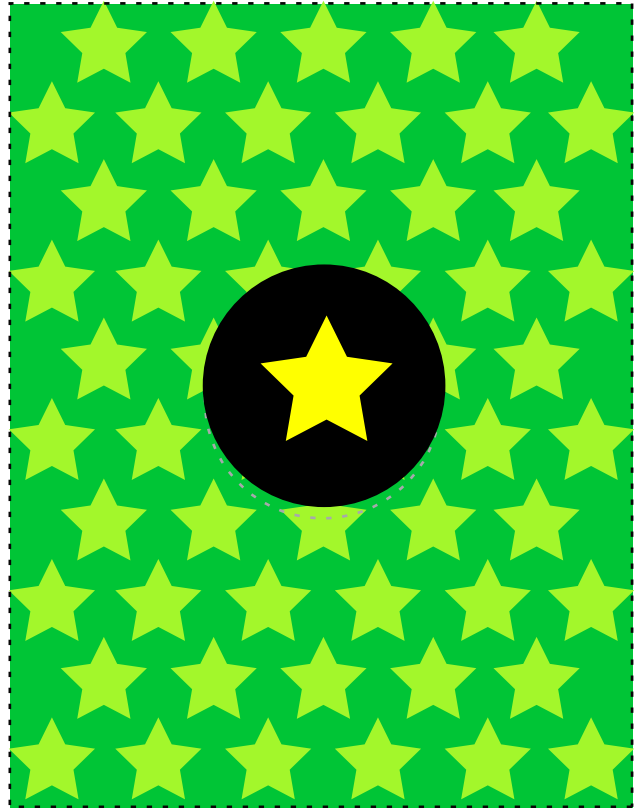
Below the header is a large rectangular area with a dashed border, containing five horizontal dashed lines for writing.

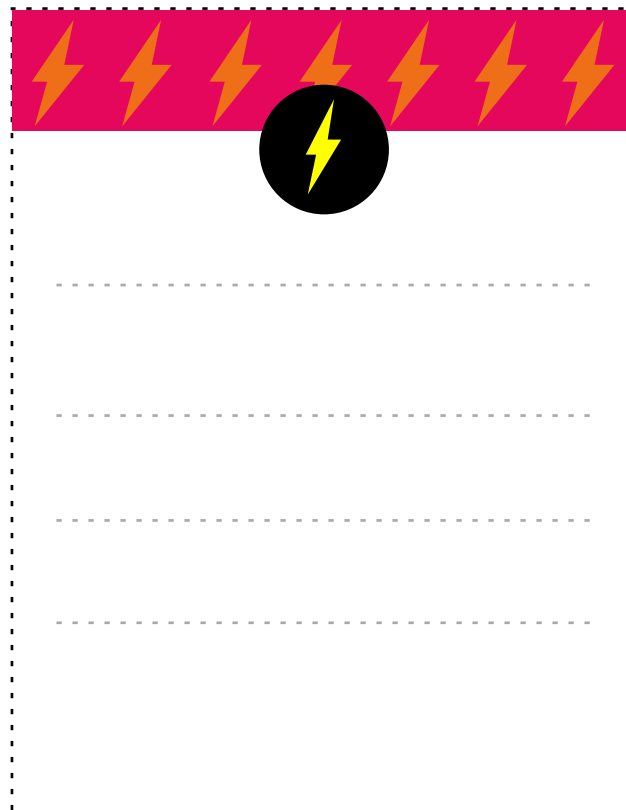
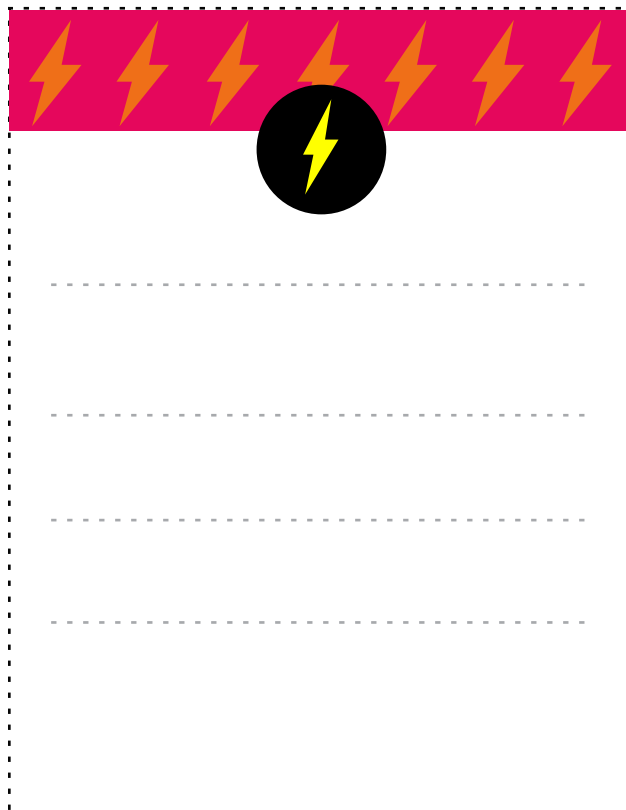


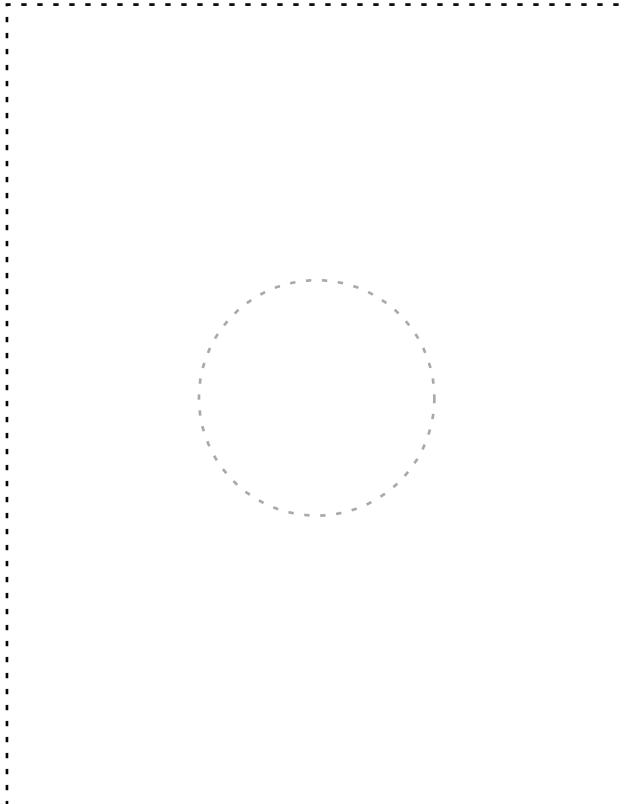
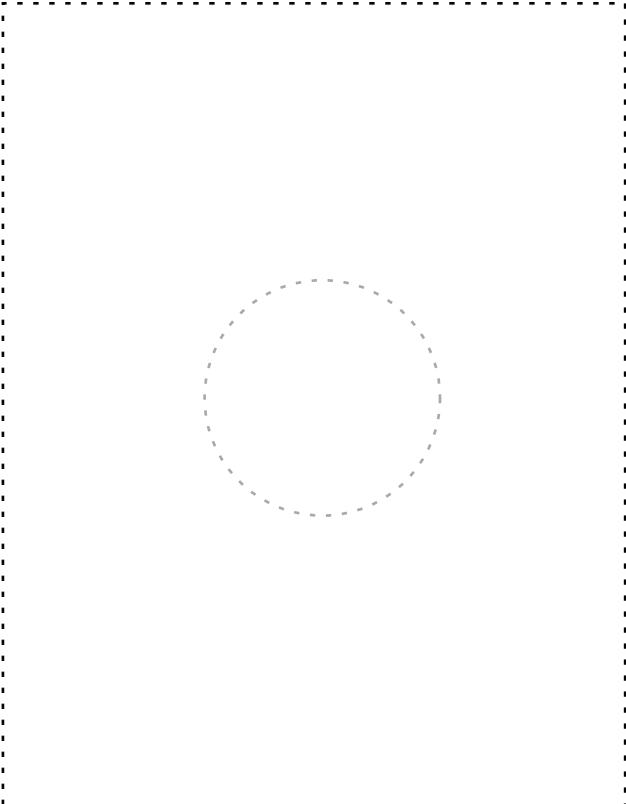
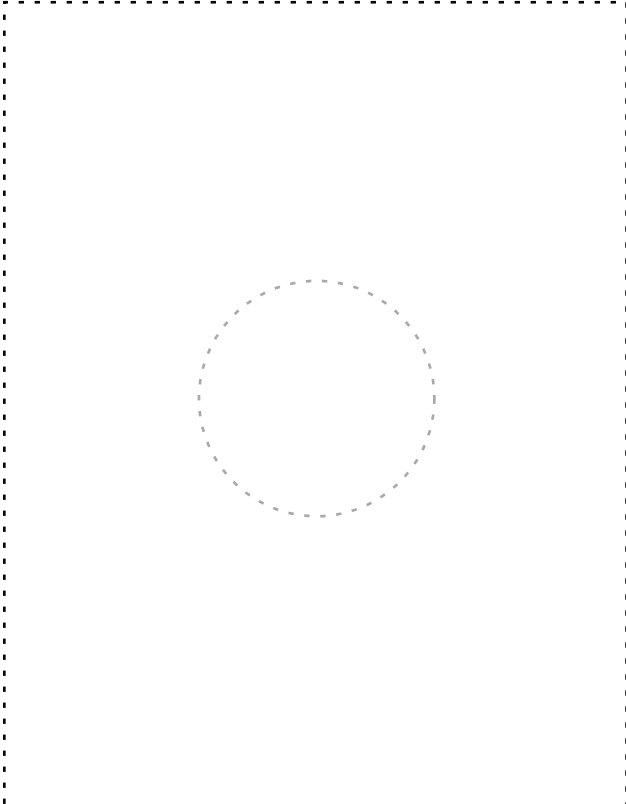
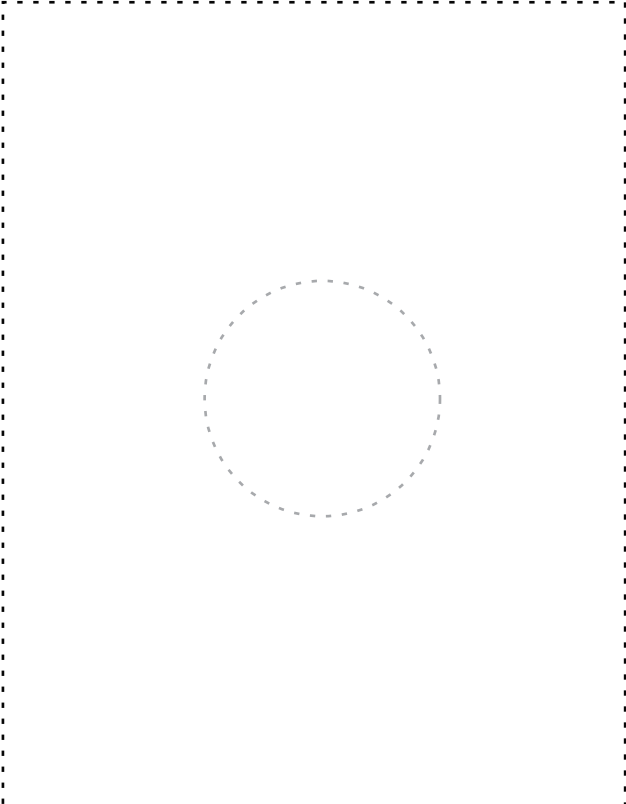














A large rectangular area defined by a dashed border, intended for drawing a board game board. It contains four horizontal dashed lines spaced evenly down the page, serving as guides for the board's layout.

A large rectangular area defined by a dashed border, identical to the one on the left, intended for drawing a board game board. It contains four horizontal dashed lines spaced evenly down the page, serving as guides for the board's layout.

A second large rectangular area defined by a dashed border, identical to the one above, intended for drawing a board game board. It contains four horizontal dashed lines spaced evenly down the page, serving as guides for the board's layout.

A second large rectangular area defined by a dashed border, identical to the one above, intended for drawing a board game board. It contains four horizontal dashed lines spaced evenly down the page, serving as guides for the board's layout.