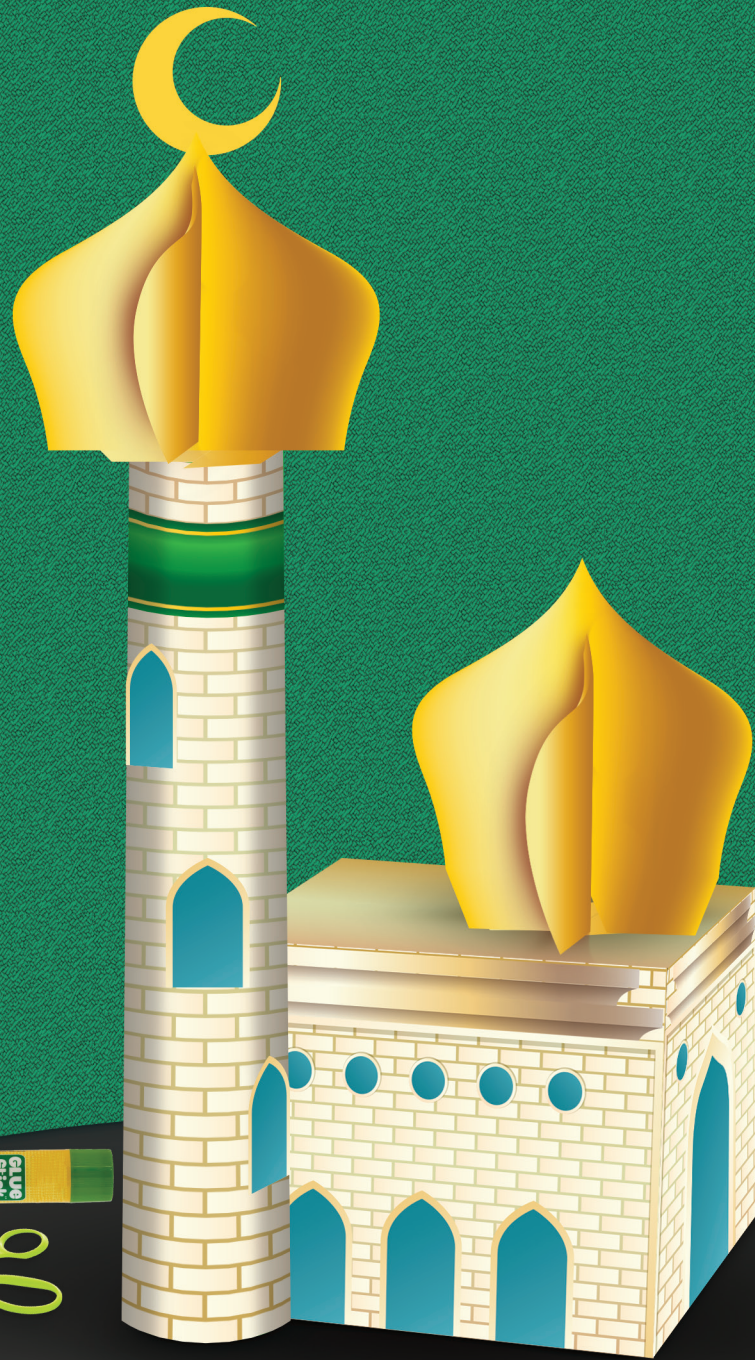




Paper Mosque

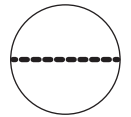




Instructions

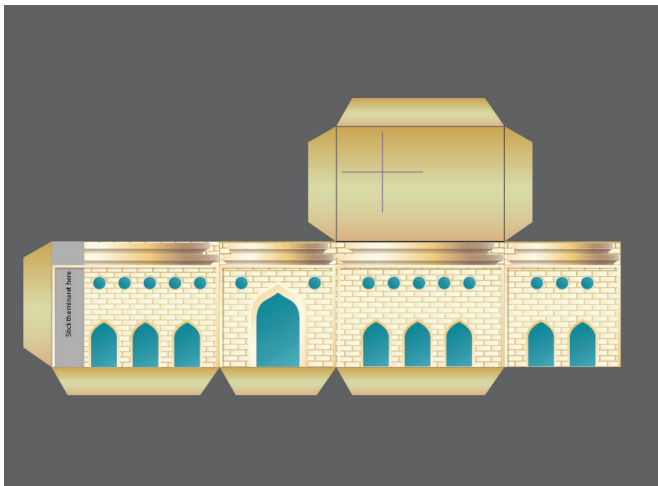
Tools:

Cut Mark

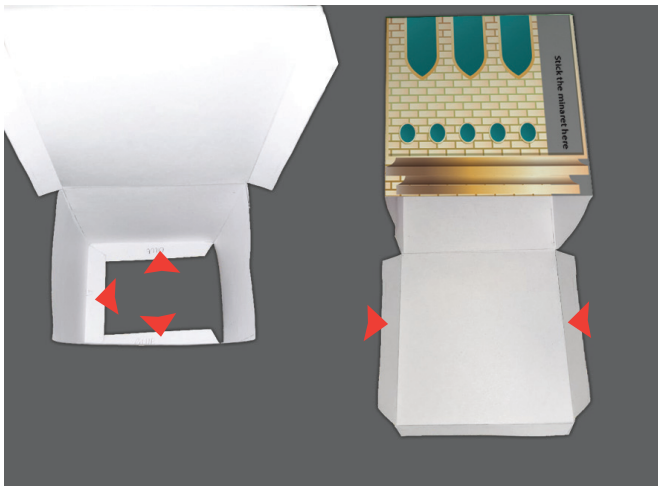


Scissors
Glue

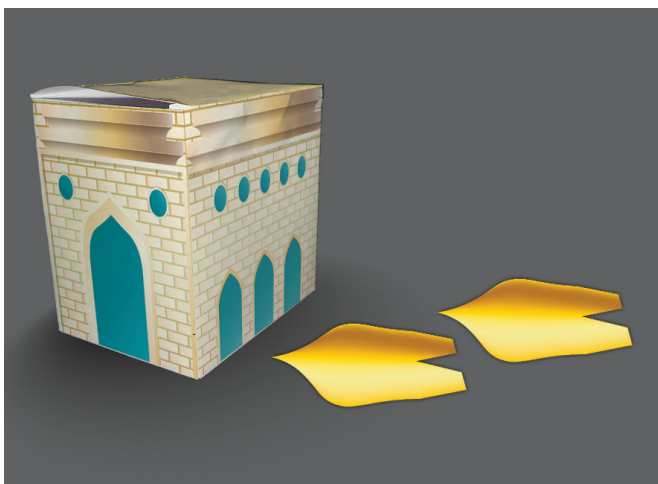
How to make it:



- Take the printable sheet (Sheet 1) and cut along the dotted lines, fold the flaps inwards like shown in the Image



- Start folding from the right edge and go towards the left such that the right and left flaps overlap each other to form a cuboid structure
- Glue the corners from the inside, following the arrows shown in the Image



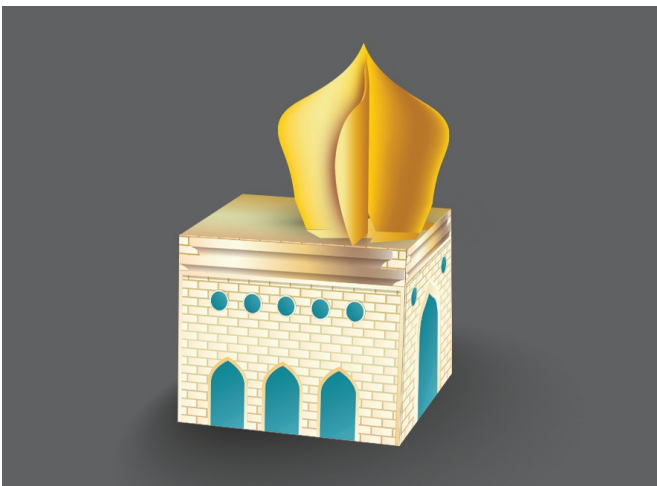
- Your 1st structure of Mosque is ready!
- Now, for the top domes, cut along the dome structure from sheet 2 to get something like as shown in Image



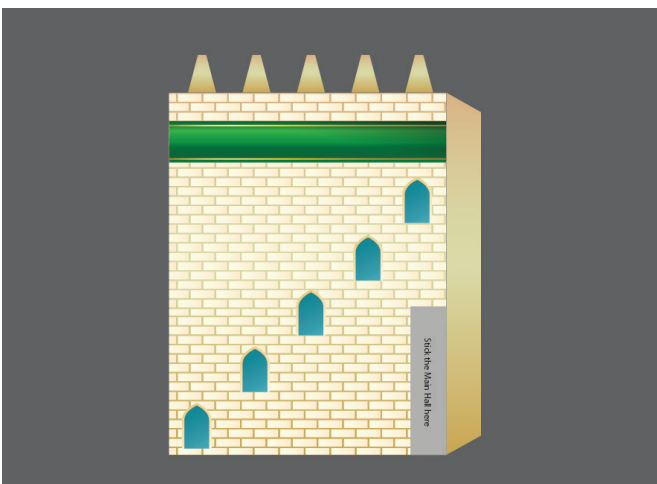
Instructions



- Now Fold the lower flaps outwards and glue the edges together.
- To form a dome like structure stack both the domes vertically as shown in the Image



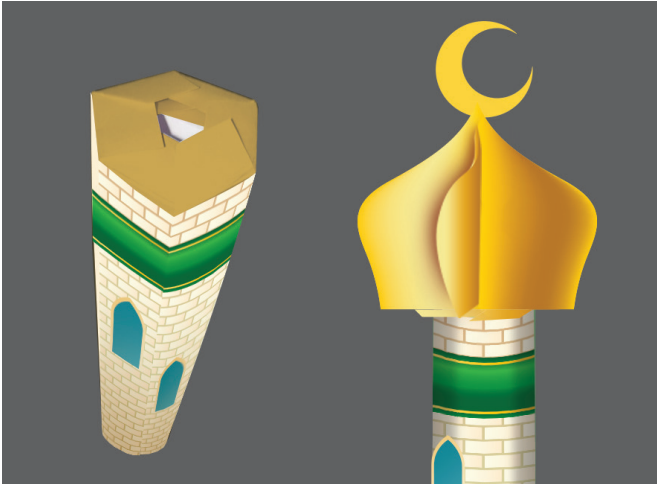
- Now you'll have a dome like 3D structure and glue it's flaps from the base and stick it on the top of our cuboid structure. Your first structure is ready!!



- Now for the minaret structure, take sheet 2 and cut along the dotted lines



Instructions



- Fold along the lines to have flaps, something like shown in Image
- Roll the paper to form a cylinder and glue along the length over the glue marking
- Glue the top tiny flaps together!



- Follow the above steps to make a 3D dome but this time it's size will be smaller than the first dome.
- Glue this dome at the top of your cylindrical minaret
- Now for the final step glue the minaret and the cuboidal structure together and Voila your Mosque is ready!!!!

