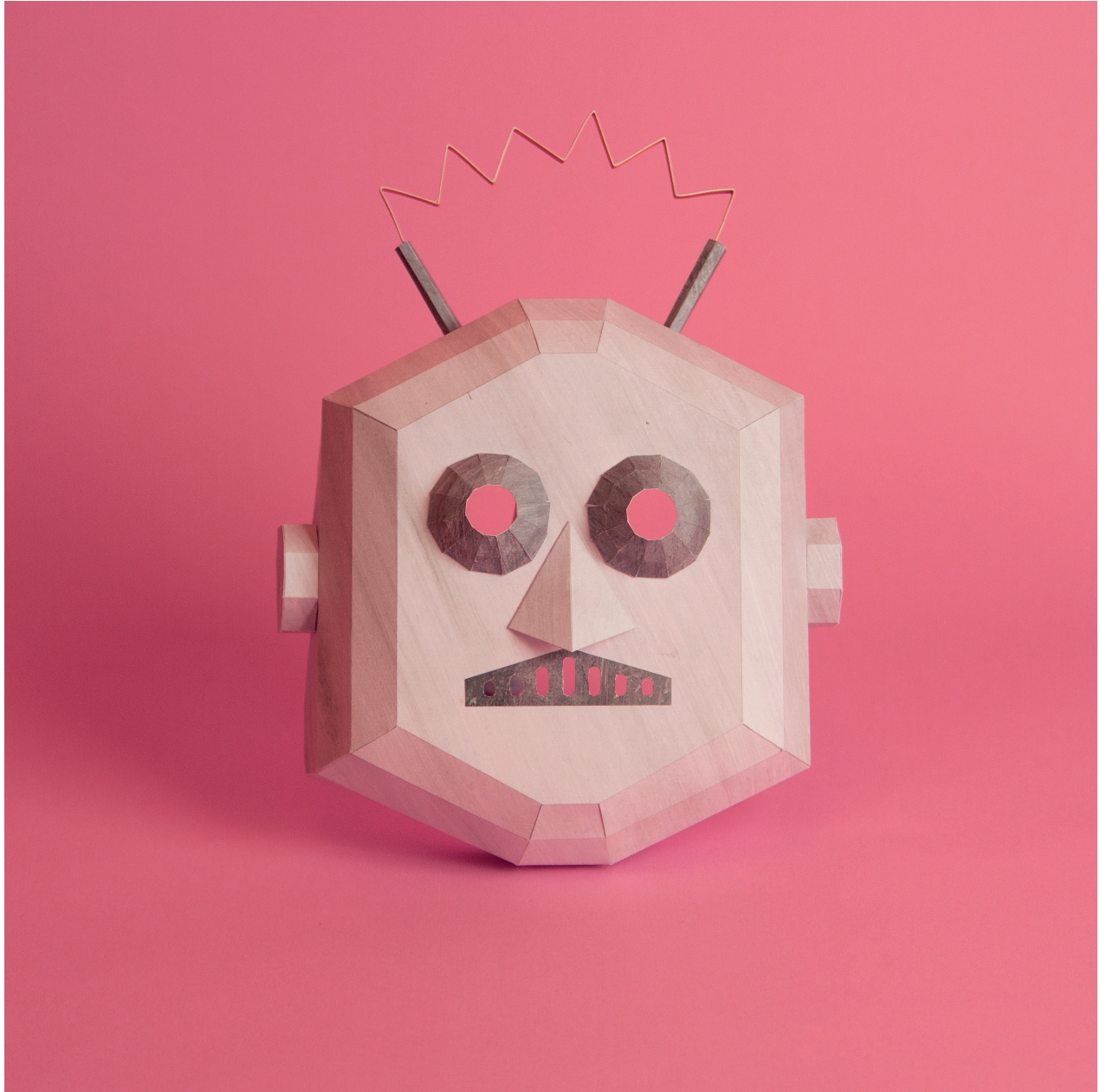




# Halloween Papercraft

By Jess Deacon



Print out and build your own papercraft masks and monster theatre this Halloween!

The series includes: 3 masks and a monster paper theatre, with instructions on how to construct each one.

---

## #3 Robot Mask



# Halloween Papercraft

By Jess Deacon

## #3 Robot Mask instructions

---

- 1 Cut out all parts. Use a craft knife for best results. Also cut out the internal shapes on parts 1 & 8.
2. Carefully fold along all fold lines (see key). Before folding it is recommended to score the line lightly with a craft knife or a ballpoint pen that no longer has ink in it. This will make folding easier and more precise.
3. Cut the slits marked with a thick grey line (see key) on parts 1 and 6.
4. Glue tab 2A behind side 1A. Then glue tab 2B behind side 1B.
5. Glue the small tabs (marked with a green circle) behind their adjacent sides on part 1.
6. Continuing in this way, glue each of the remaining tabs on part 1 behind their adjacent side until all tabs are joined to their sides. This is the robot's face.
7. Take one of the part 5s and glue tab 5A behind side 5B, making an octagon. Then glue part 4 onto side 5C, making the face of the octagon. Repeat on the other part 5. These will be the robot's ears. Place to one side.
8. Glue tabs 6A behind sides 6B. Do this for both part 6s.
9. Glue the small tabs (marked with a green circle) behind their adjacent sides on parts 6. These are the robot's eyes. Now glue the remaining tabs of parts 6 and stick onto the robot's face, over the eye holes you cut earlier.
10. Fold over the tabs of part 7 and glue them over the nose hole. The nose should stick out as a 3D triangle.
11. Glue part 8 over the mouth hole.
12. Take one of the part 9s and roll it up, gluing tab 9A behind side 9B. Repeat this action with the other part 9.
13. Insert the part 9s into the holes on top of the robot's head. Dab a bit of glue on the inside to hold in place.
14. Take part 10 and fold along the mountain and valley fold lines (see key). Do the same for part 11, noting that the mountain and valley folds are different here.



# Halloween Papercraft

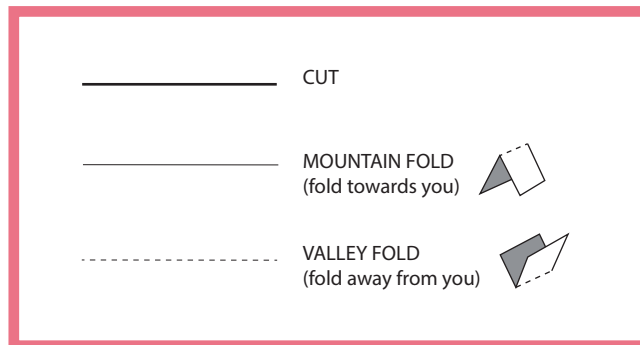
By Jess Deacon

## #3 Robot Mask instructions

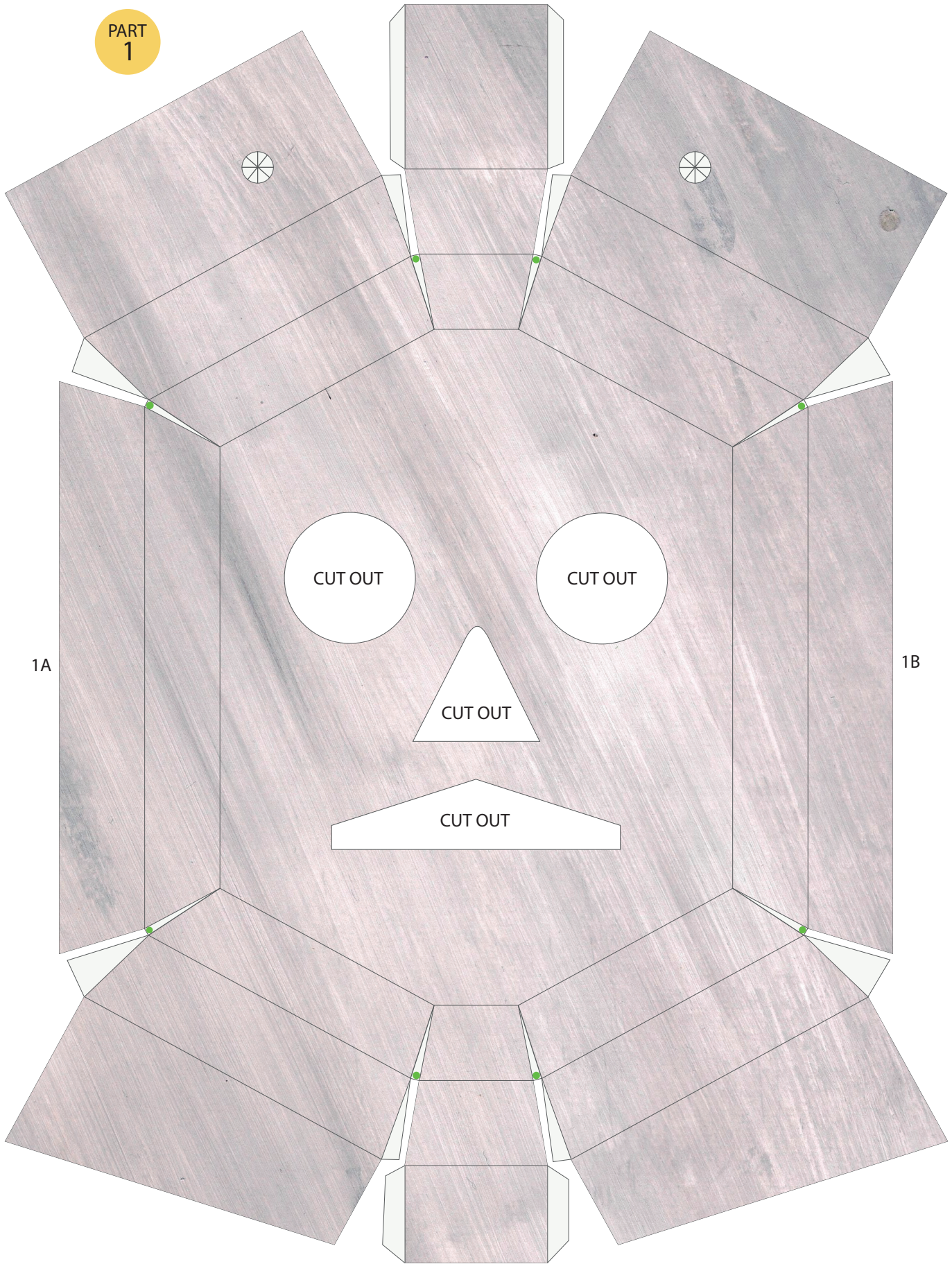
---

15. Glue part 11 onto the underside of part 10 so that it makes a zigzag, yellow on both sides.
16. Insert the ends of the zigzag into parts 9. You might need to pinch slightly to fit. Dab on a bit of glue to hold in place.
17. Take the robot's ears that you set aside earlier, and using the remaining tabs, glue each ear onto the sides of the robot's head.
18. To make the headband of the mask: attach the tabs of parts 12 to the insides of the mask, checking that they are at a suitable height for you head when wearing the mask. Once these are firmly in place, place the mask on your face and pull the ends round to the back of your head and fix together (you can use a paperclip or a piece of masking tape to allow further adjustments). Trim excess paper from the ends if necessary.

### KEY



PART  
1



1A

1B

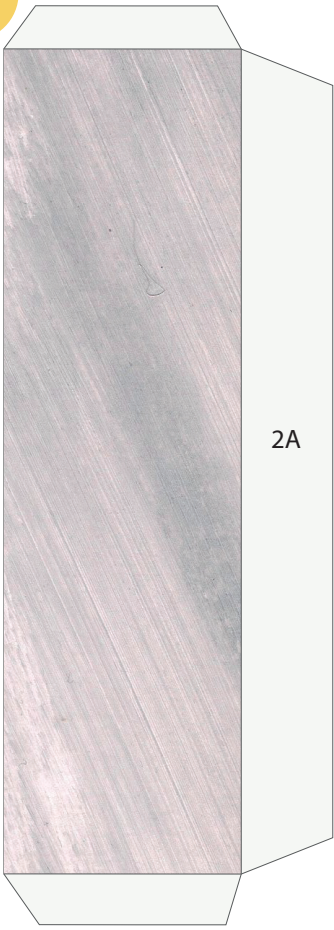
CUT OUT

CUT OUT

CUT OUT

CUT OUT

PART 2



PART 3

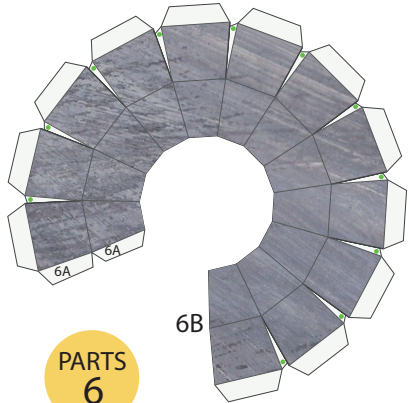


10A 10B

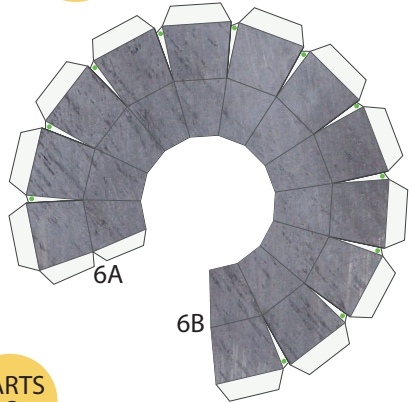
PART 10



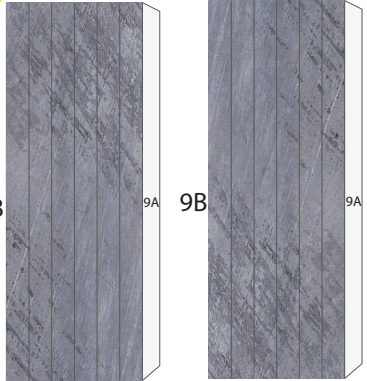
PART 11



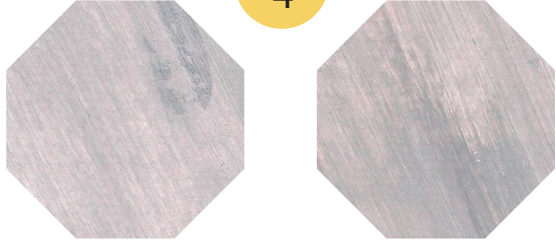
PARTS 6



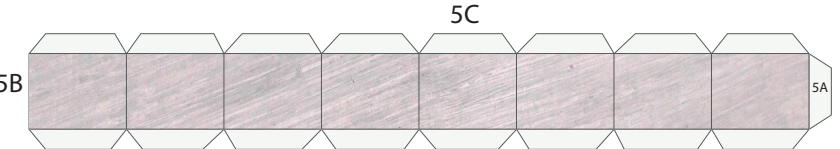
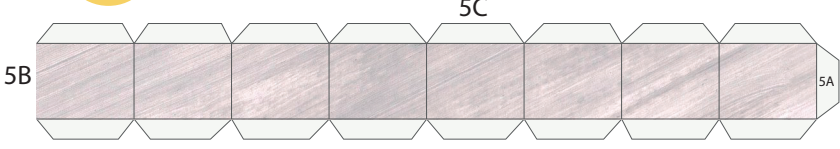
PARTS 9



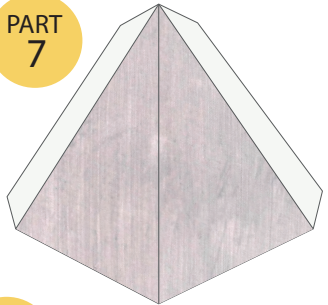
PARTS 4



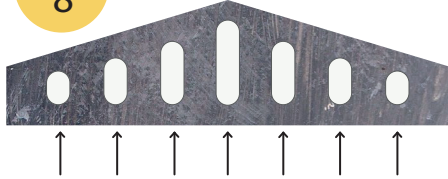
PARTS 5



PART 7



PART 8



CUT OUT ALL HOLES

PARTS  
12

