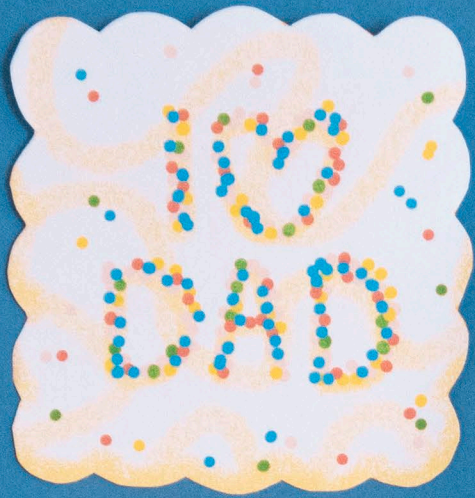


3D Paper Toast



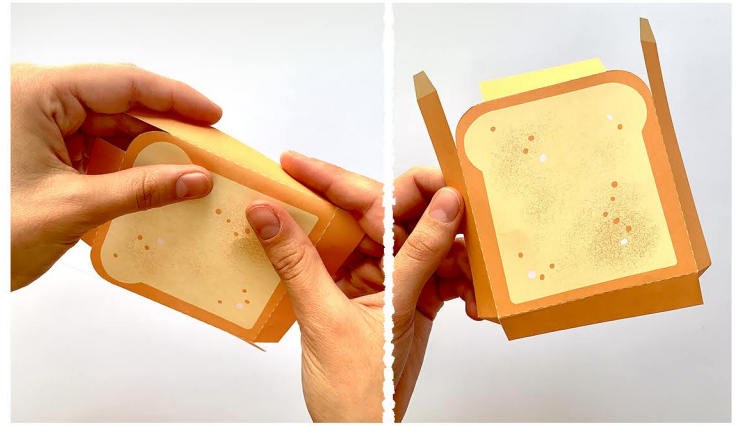
by paperjulia

3d Paper Toast

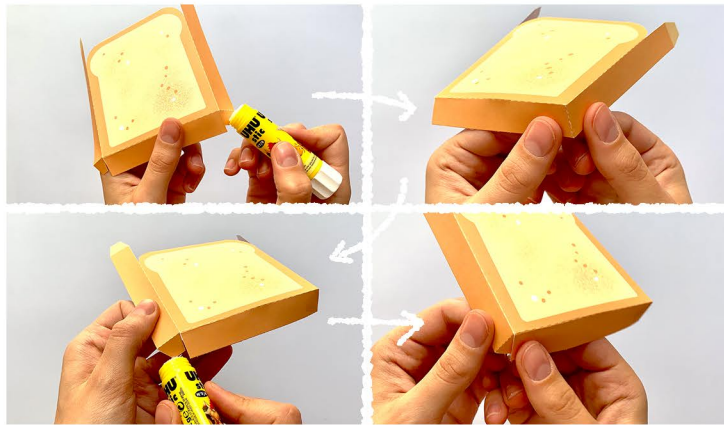
by paperjulia



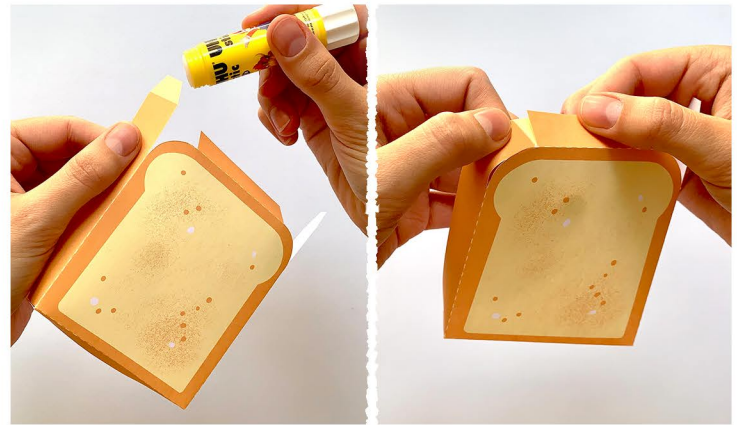
1. Print page 4 and 5 onto heavier paper. 100 gsm or more is preferred. Cut all pieces.



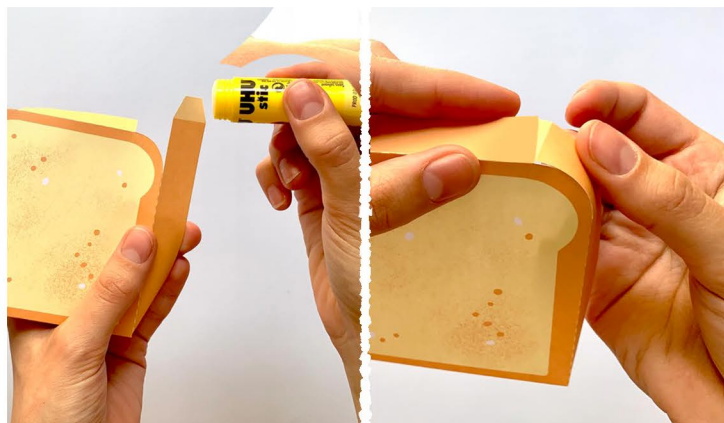
2. Choose the type of bread for your toast. Score and fold down along the dashed line.



3. Place glue on one of the bottom flaps, then hold the flap tightly against the corresponding side for several seconds to create a corner. Do the same for the other bottom flap.



4. Add glue to one of the top flaps. Curve following the shape of the toast and glue it to the corresponding side.

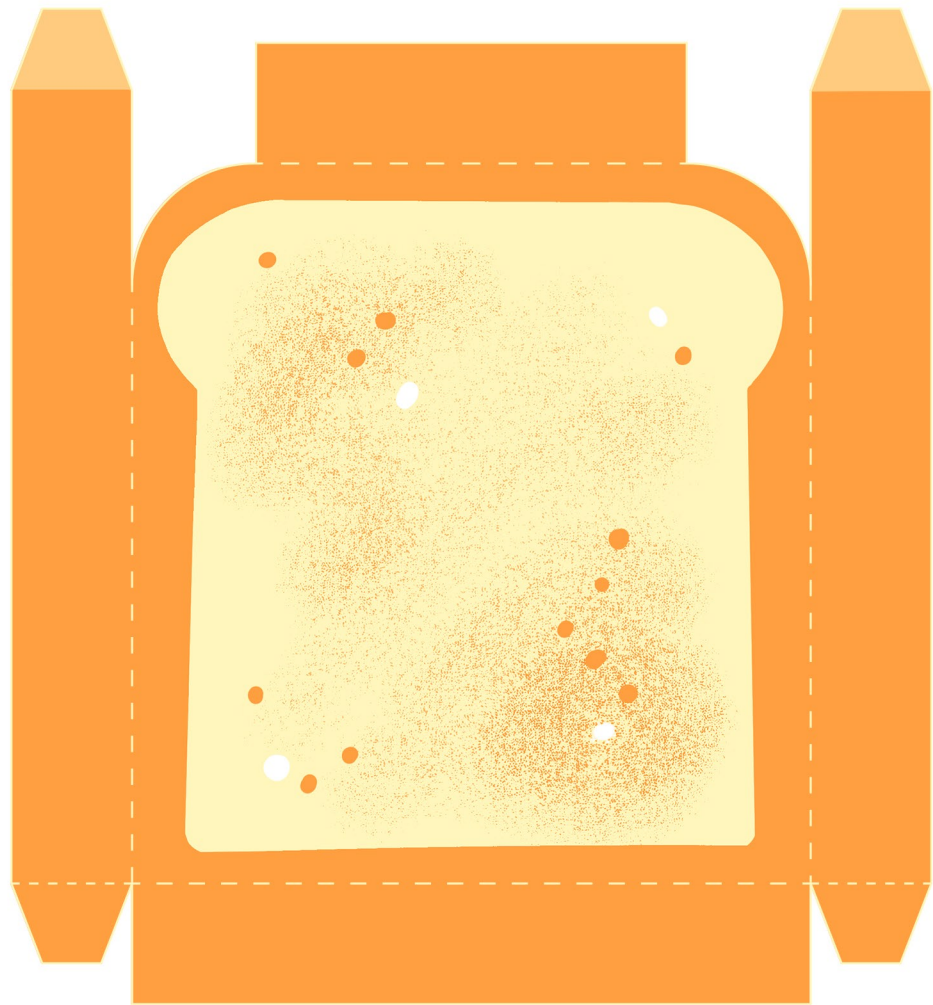


5. Repeat the previous step with the other top flap to complete your slice of bread.



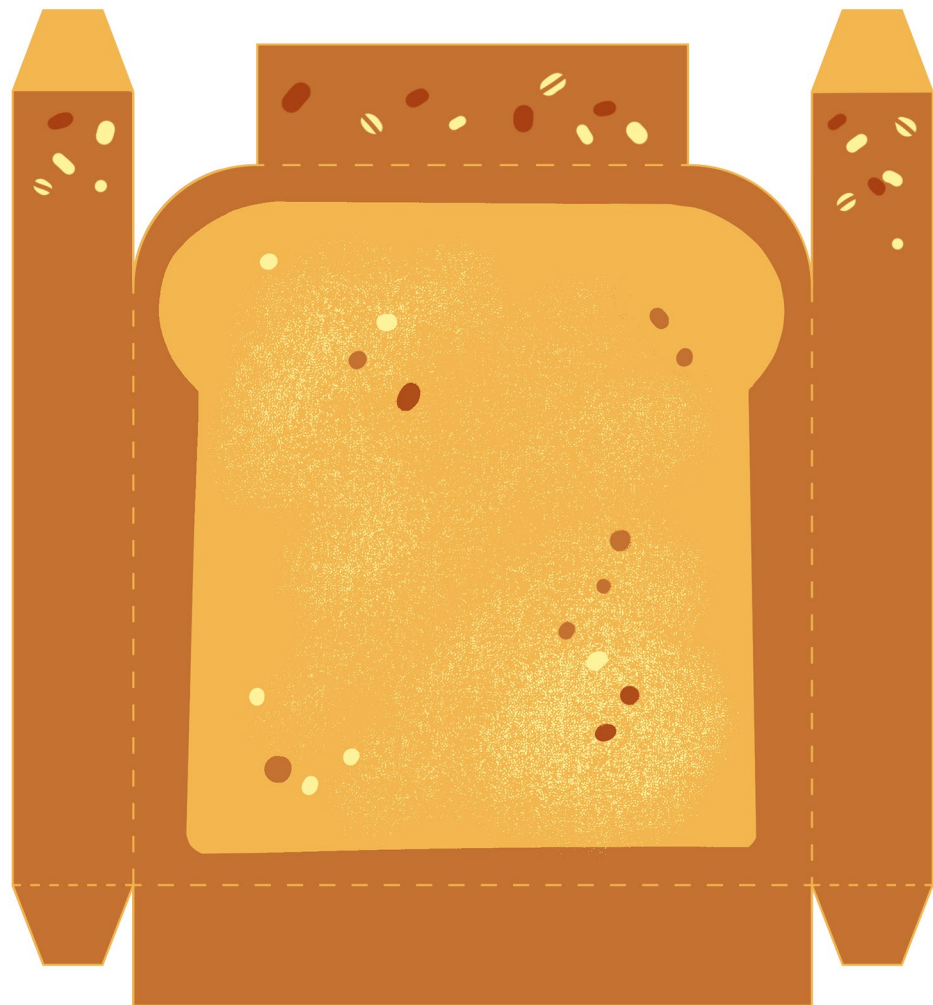
6. Choose your preferred topping and glue it on top of your toast. Don't use glue if you want the toppings to be interchangeable. Your toast is finished!

White bread



Cut ———
Fold - - - - -

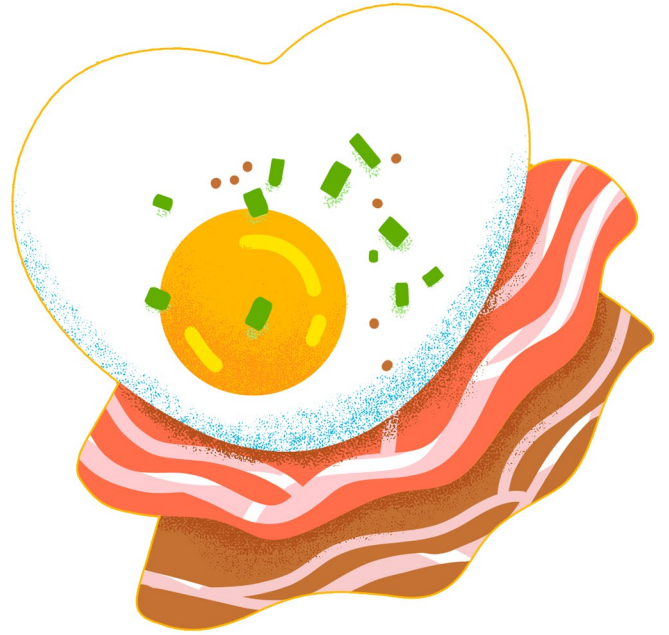
Wheat bread



Cut ———



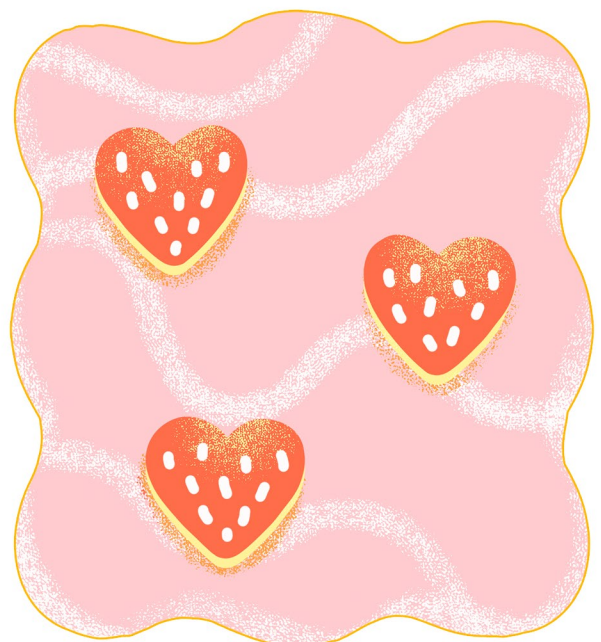
Fairy bread message



Bacon & egg



**Papa bear choco spread
with banana and blueberries**



**Raspberry frosting
with strawberry hearts**