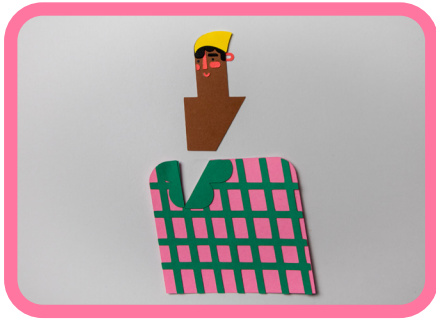


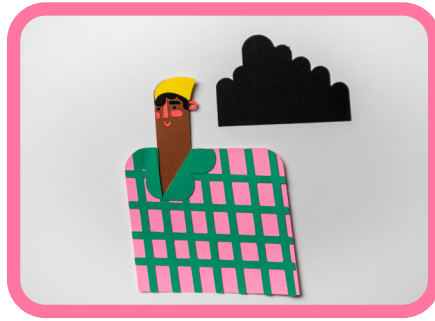
# Spring Activity Puppets



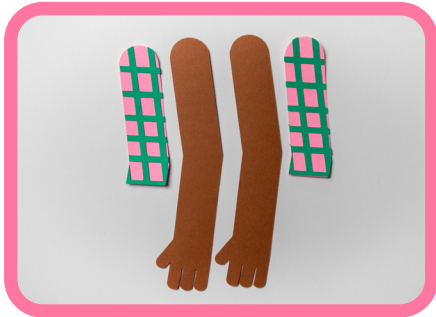
# Puppet 1 Instructions



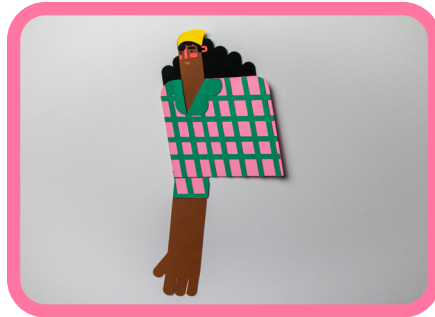
1) Cut out all of your objects. Next, find the head and shirt. Glue the head below the shirt, making sure to line up the top of the shoulders on both objects.



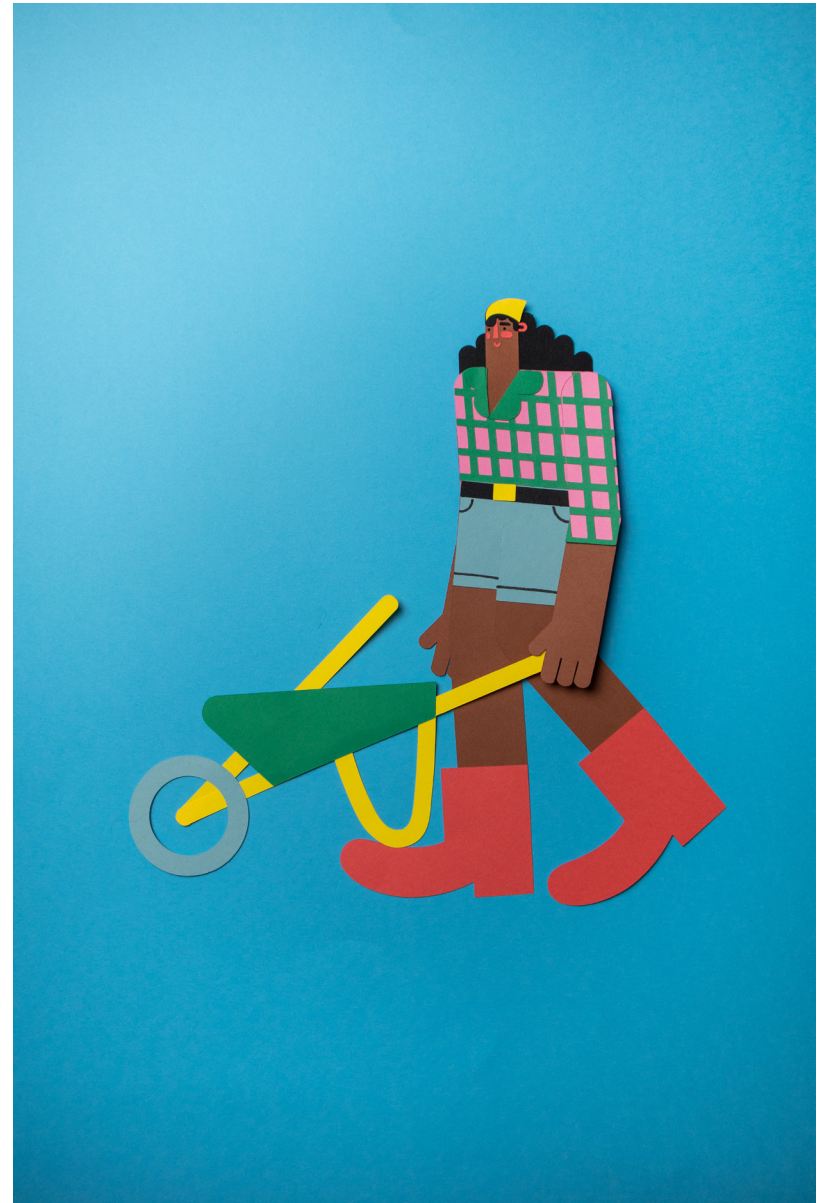
2) Find the hair and glue it to the back of the head. Make sure to line up the largest 'bump' with the back of the head

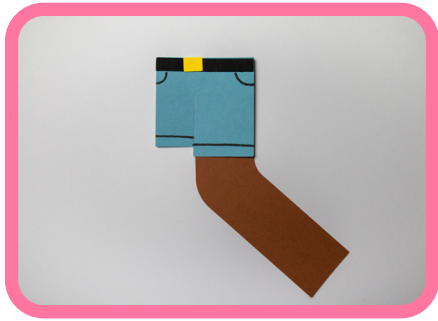


3) Glue the sleeves on top of the arms.

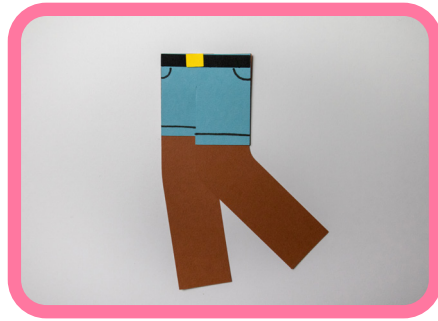


4) Glue one arm behind the main body of the puppet, making sure to line up the shoulders





5) Let's work on the legs next. Find the leg which is bent the most. Line it up with the top right corner of the shorts, and glue.



6) Do the same with the other leg, but line up with the top left corner of the shorts, and glue.



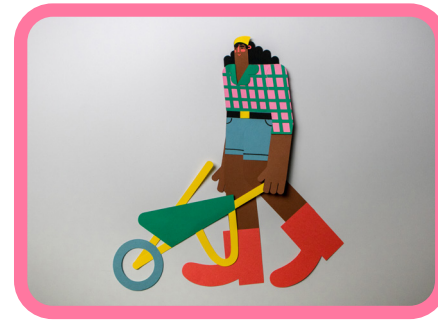
7) Glue the legs you have just made to bottom of the shirt



8) Dot a bit of glue to the underside of the other arm. You don't want to glue the entire arm down as you won't be able to slip the wheelbarrow underneath

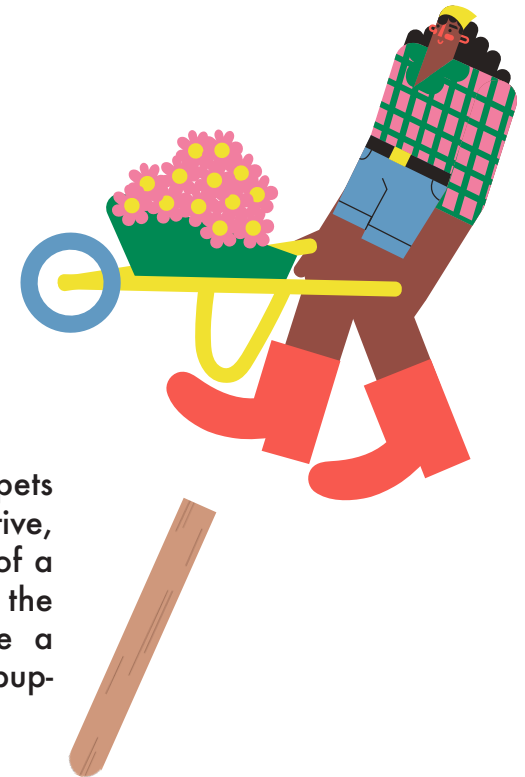


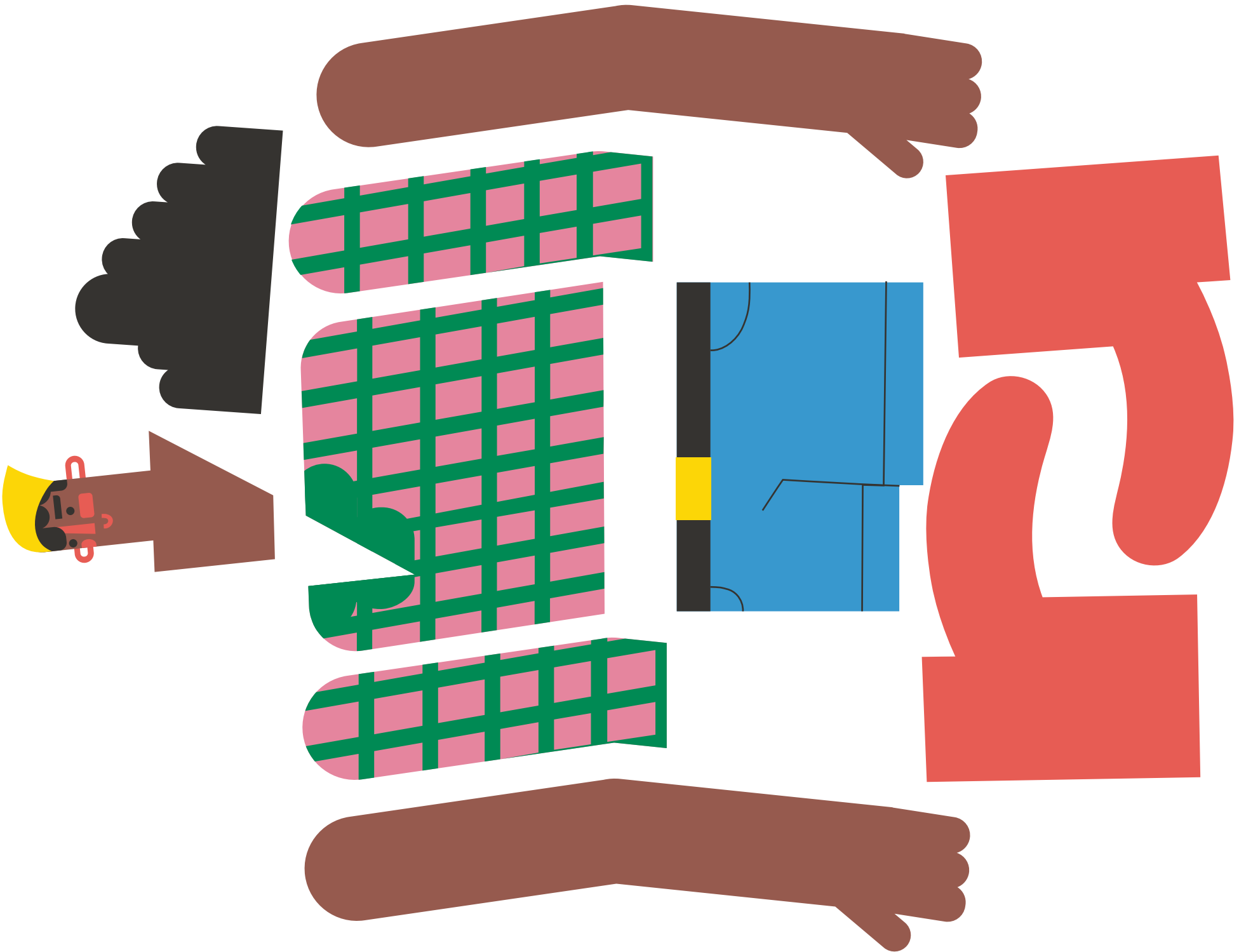
9) Next, glue the red boots on top of both legs. (It doesn't matter which boot goes on either leg)

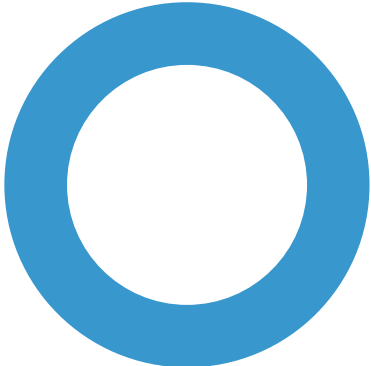
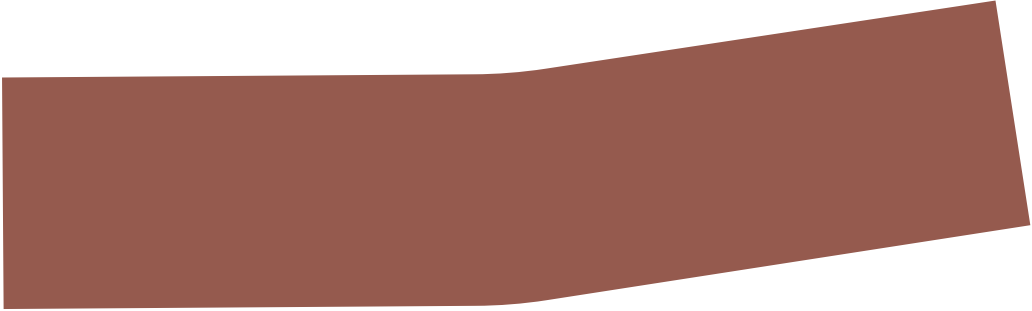
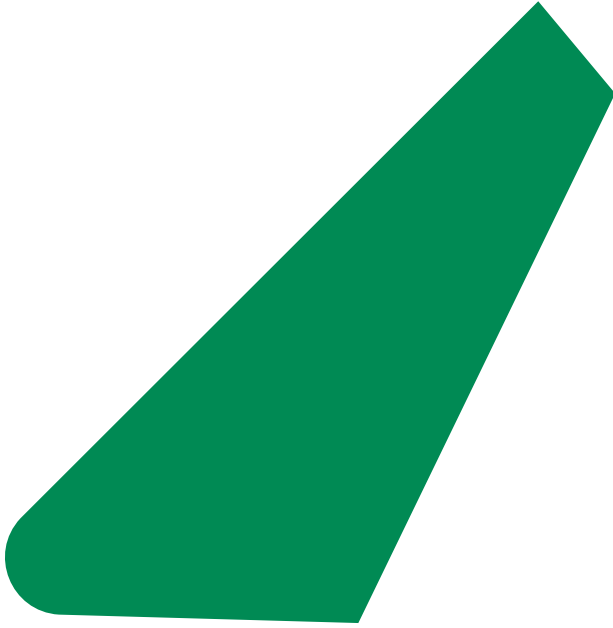


10) Cut out the parts of the wheelbarrow and glue together as shown in the picture, and glue the longest handle to the back of front hand.

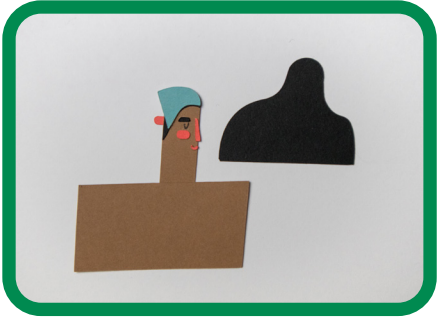
11) To make your puppets even more interactive, why not stick the top of a popsicle / lolly stick to the back. Now you have a handle to move your puppet around!







# Puppet 2 Instructions



1) Cut out all of your objects. Place the hair behind the head and glue. (line up the largest bump of the hair with the back of the head)



2) Line up the rectangle of the body with the dungarees and glue.

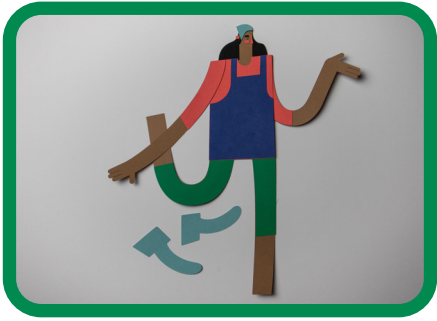


3) Glue the bent arm behind the body, and the straight arm on the front of the body

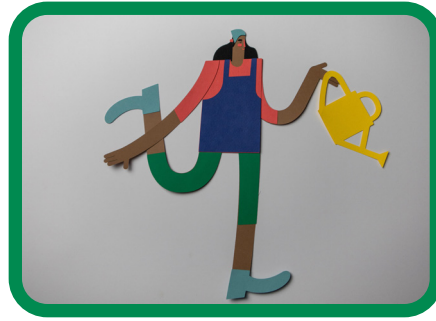


4) Glue the legs behind the body, lining up the bottom edges of the body and legs together





5) Glue the shoes to the tips of the legs. Make sure the shoes are on top of the legs, not behind.



6) Glue the watering can to the bent arm's hand.



7) To make your puppets even more interactive, why not stick the top of a popsicle / lolly stick to the back. Now you have a handle to move your puppet around!

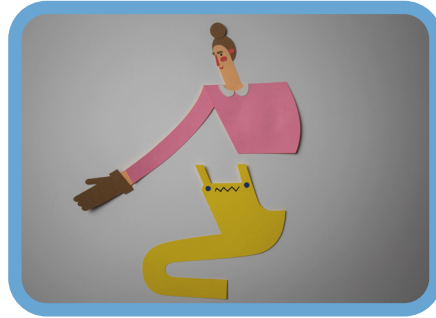




# Puppet 3 Instructions



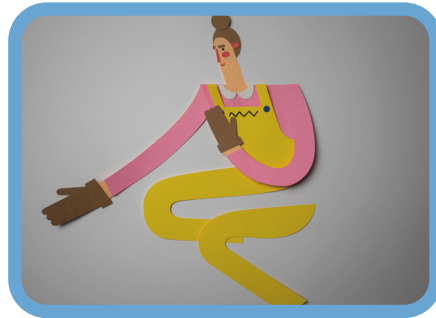
1) Glue the straight arm to the back of the body



2) Glue the dungarees onto the main body, lining up the edges



3) Dot a bit of glue onto the top right corner of the main body and attach the bent arm, lining up the corners. (Don't glue the entire length of the arm down!)



4) Glue the loose leg underneath the bent arm, lining up the edges, and using the main picture as reference.





5) Glue the spade to the top of the hand



6) Glue the boots to the bottom edges of the legs

7) To make your puppets even more interactive, why not stick the top of a popsicle / lolly stick to the back. Now you have a handle to move your puppet around!





# Puppet 4 Instructions



1) Let's start with the bike, this is the fiddliest to cut out so take your time!



2) Glue the basket to the left handle

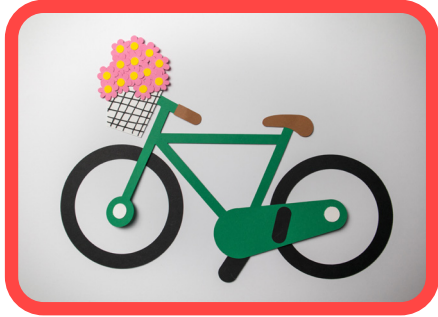


3) Glue the flowers to the top of the basket

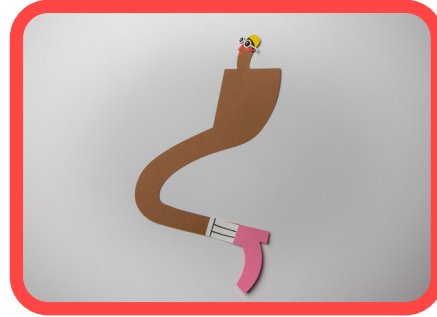


4) You can cut out the middle of the wheels like I've done if you like. Glue the top of the wheel to front of the bike's frame.

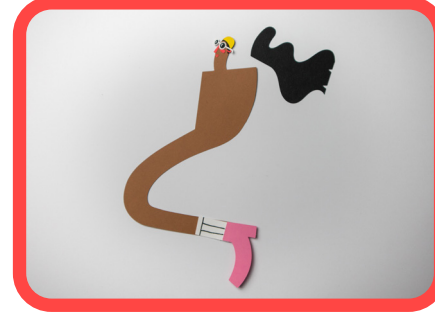




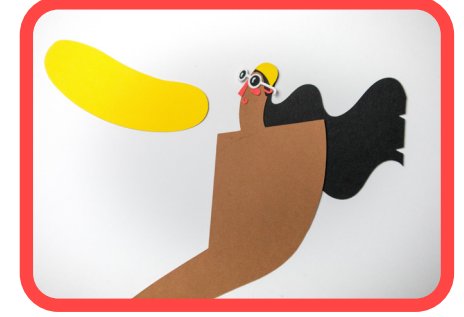
5) Glue the side of the back wheel to frame of the bike



6) Now let's begin with the body of the character!



7) Glue the hair to the back of the characters head, lining up the edges.



8) Glue the hat behind the head (don't worry about getting this perfect, but use the main picture as reference)



9) Line up the dress with the characters body and glue down.



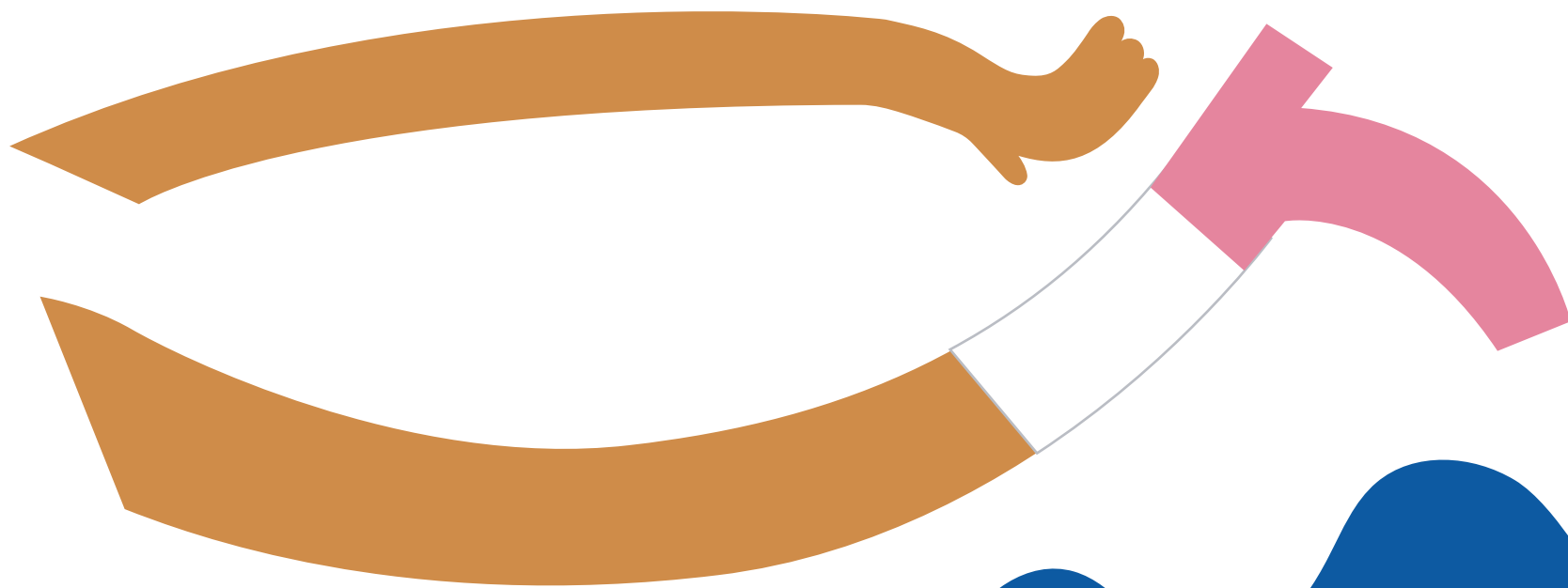
10) Find the arm with the pointiest corner and glue it behind the body

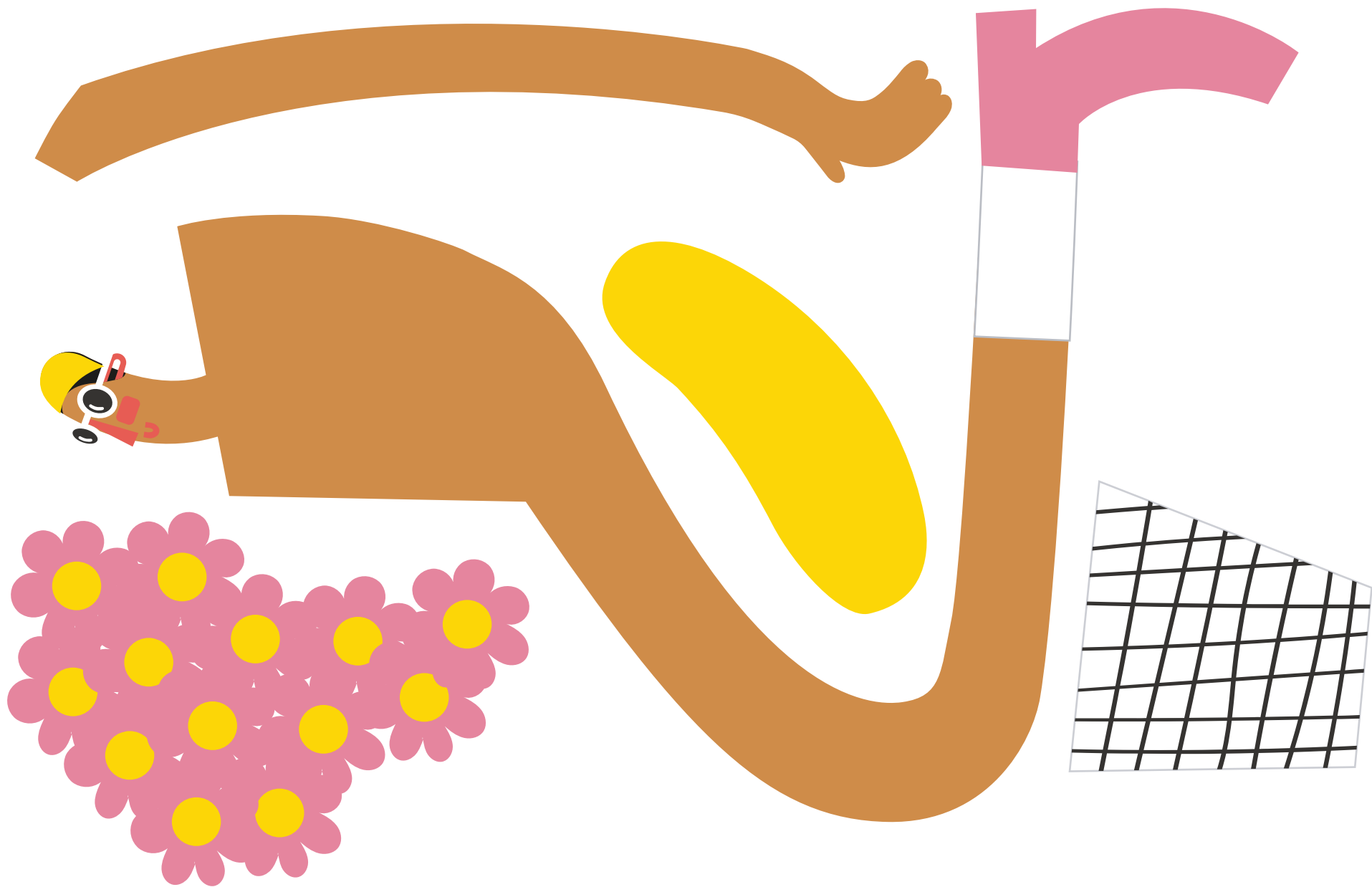


11) Glue the other arm on the top of the dress, lining it up with the top right corner.



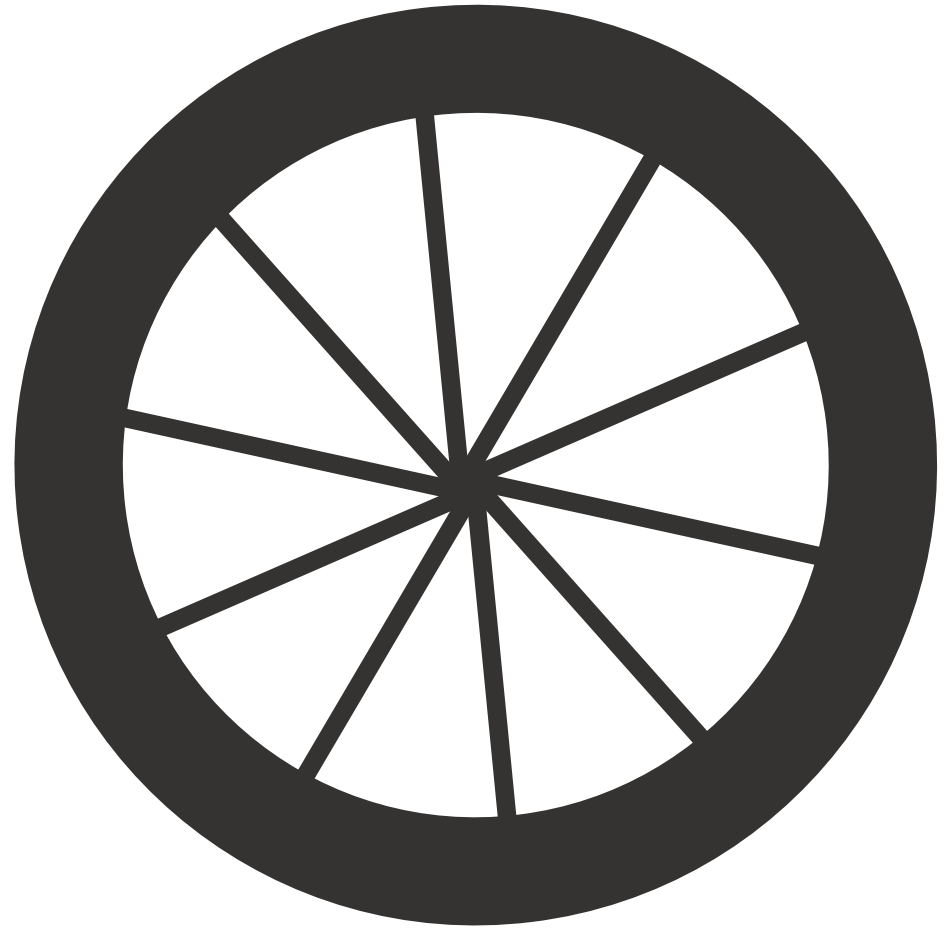
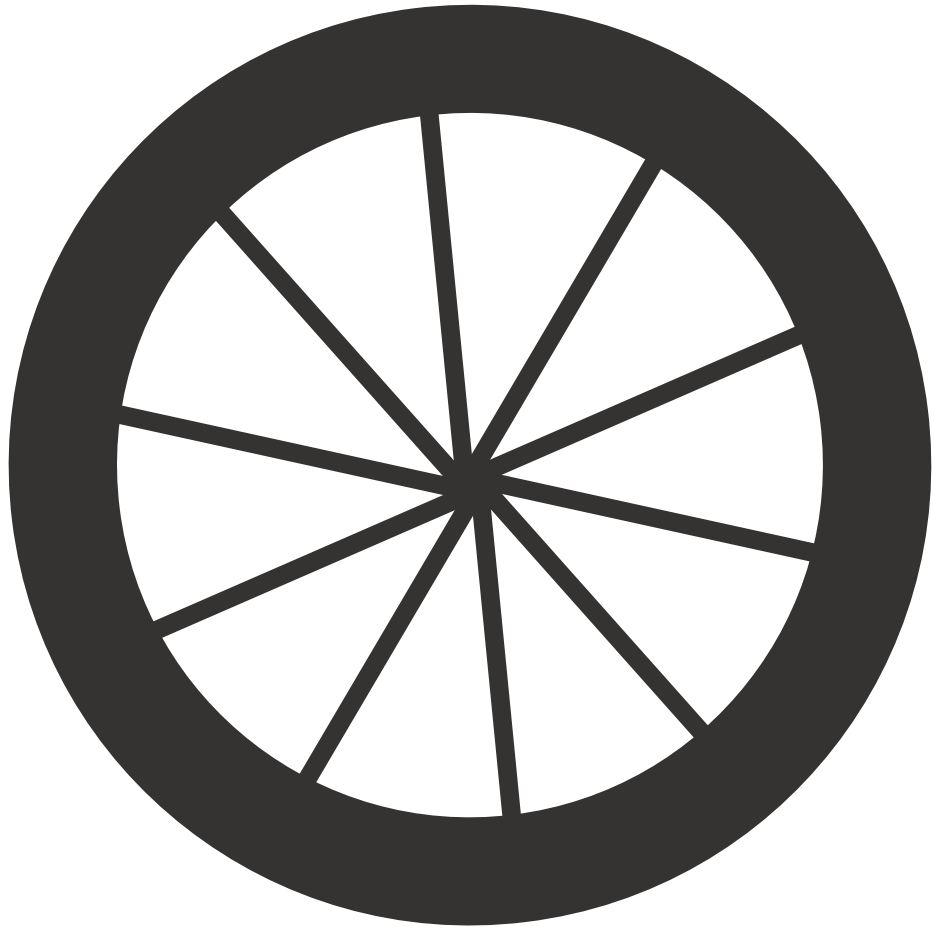
12) Sit the character on front of the bike (It should still be missing a leg) and glue the leg behind, attaching it to the back of the character. (the leg should be the bottom layer)



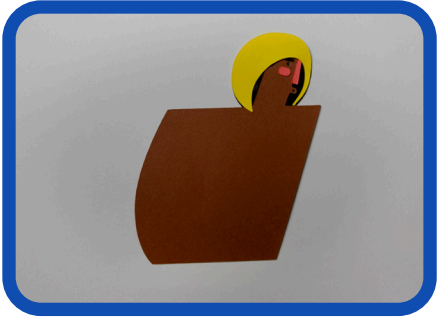




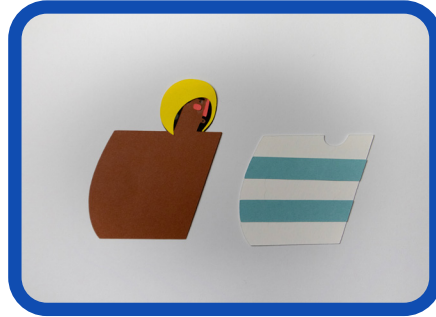




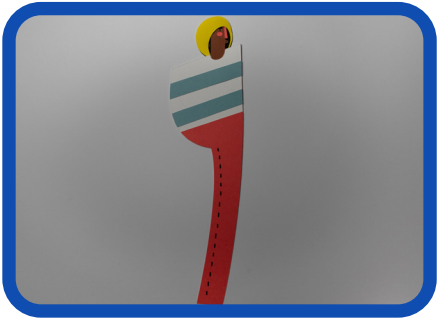
# Puppet 5 Instructions



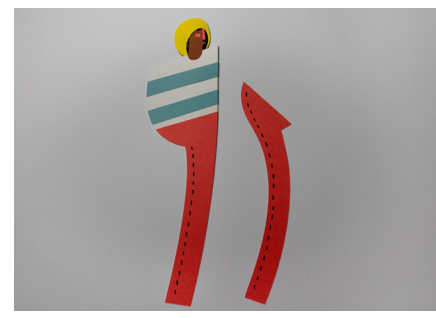
1) Let's start with the main body.



2) Glue the t-shirt to the body, lining up the edges.

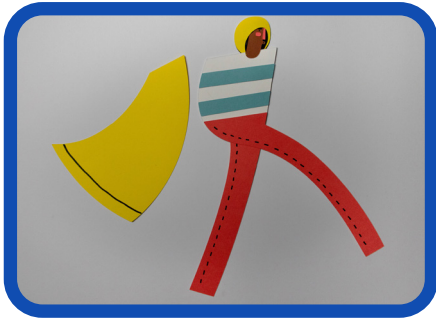


3) Glue the straightest leg to the bottom of the t-shirt, the trousers should be on the top.

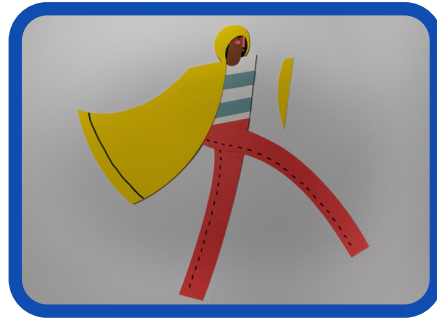


4) Glue the other leg on top, lining up the edges.





5) Glue the largest part of the coat to the t-shirt. Make sure the top edges (the shoulders) line up with each other.



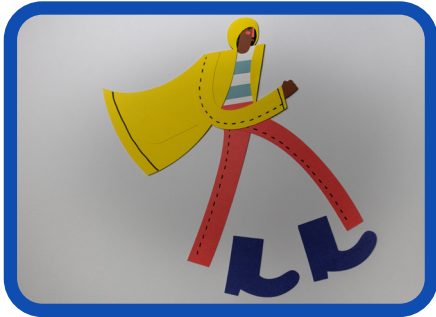
6) Glue the smallest part of the coat to the t-shirt. The longest straight edge should line up with edge of the t-shirt.



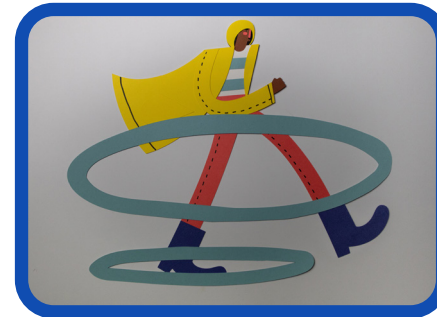
7) Glue the arm to the coat, making sure the top edge of the arm lines up with the top edge of the coat.



8) Glue the pocket to the middle of the coat



9) Glue the boots to the tips of the trousers



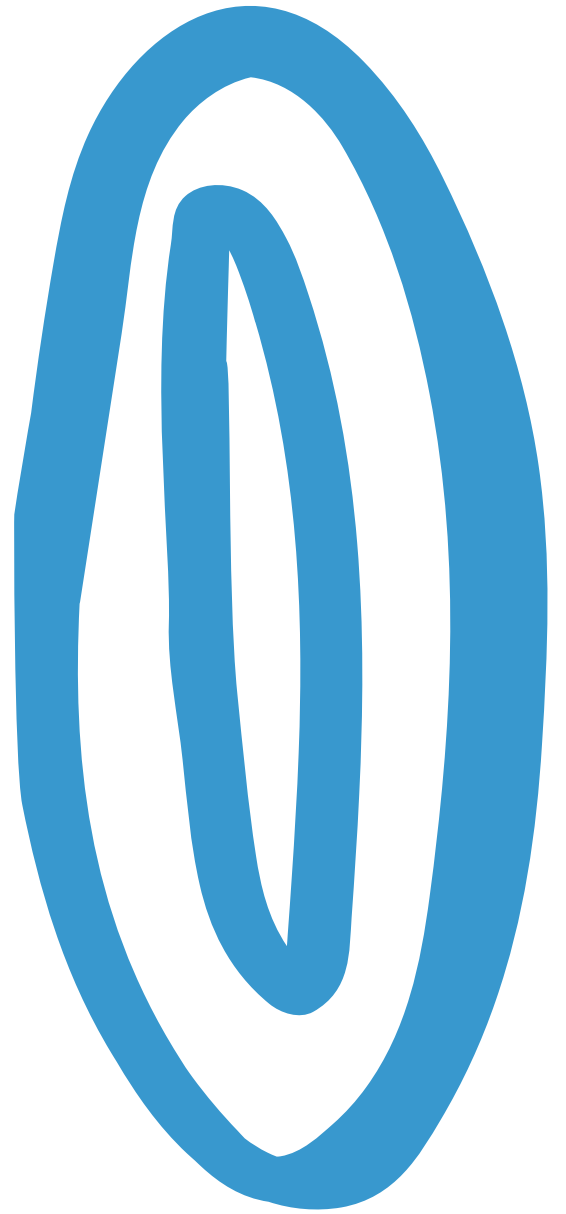
10) This part is optional! Glue the smallest puddle ring under the base of the boot



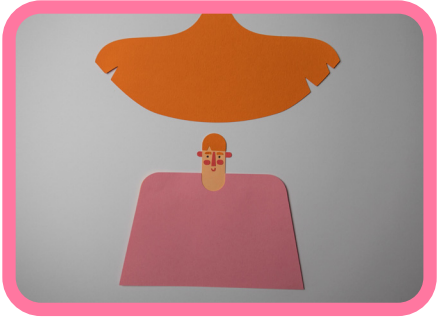
11) Glue the larger ring further up the leg to form your puddle



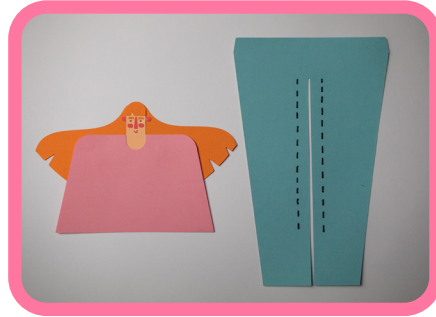




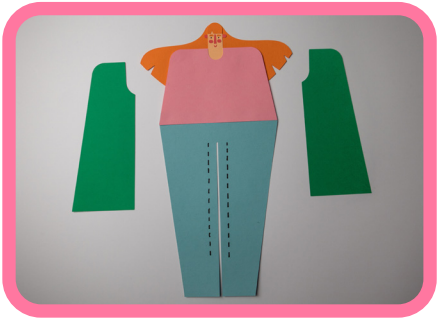
# Puppet 6 Instructions



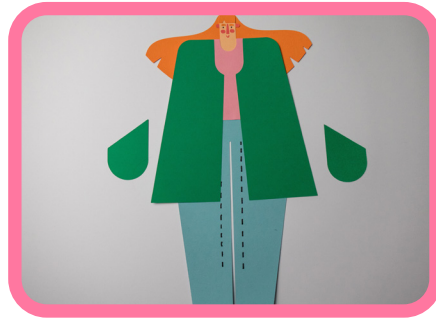
1) Glue the hair to the back of the head



2) Glue the trousers to the back of the t-shirt. The t-shirt should line up with the top of the trousers.

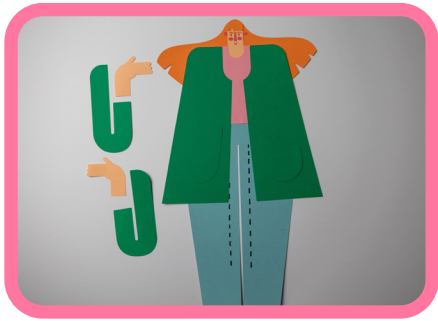


3) Glue the two halves of the coat on top of the t-shirt, they should line up with the shoulders.

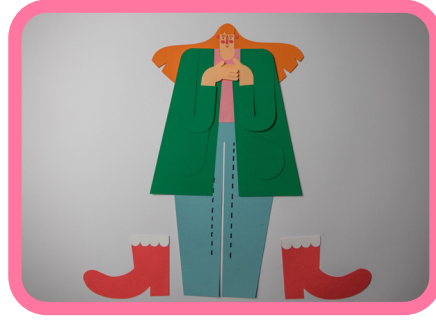


4) Glue the two pockets onto the coat





5) First, glue the pair of hands under the sleeves (make sure they are glued to the short-side of the arms)



6) Glue the arms to the shoulders of the coat. (Only stick down the top of the arms, not the whole length)



7) Now, time for the umbrella. Glue the top of the stick to the base of the umbrella.



8) Slip the umbrella underneath the hands and glue down

7) To make your puppets even more interactive, why not stick the top of a popsicle / lolly stick to the back. Now you have a handle to move your puppet around!



