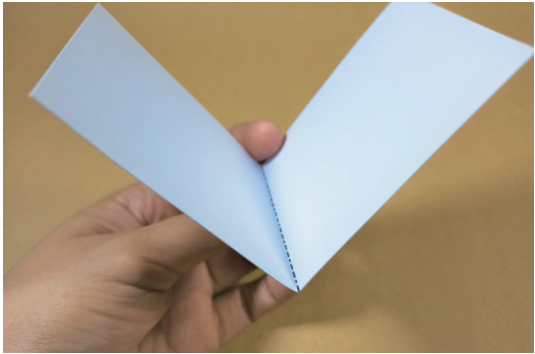
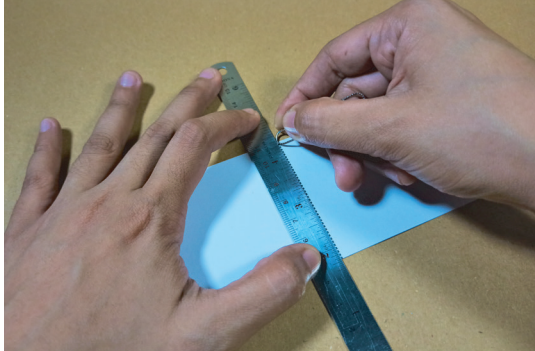


LEGEND

SCORE

Paper score is a ridge that is indented into the paper where the fold line will occur. Use a ballpoint pen that has run out of ink, ruler or any dull edge that won't cut the paper. Press the ruler(or any dull edge used) down firmly at the place you want to fold.



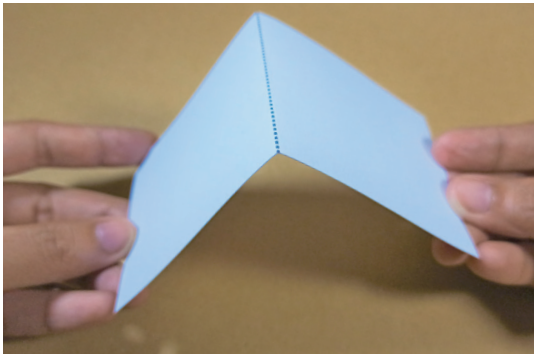
VALLEY FOLD

The crease/fold is at the bottom or away from you and the paper is folded forward into itself. The paper should form a "V" when you unfold.



MOUNTAIN FOLD

The crease/fold is at the top or towards you and the paper is folded behind into itself. The paper should form a mountain when you unfold.



CUT OUT



BEST POP EVER POP-UP CARD



Carefully cut out the pop-up pieces for this card following the solid lines with scissor icons. Score and fold according to the guide on the template.



1. FOLD THE COVER AND THE BASE



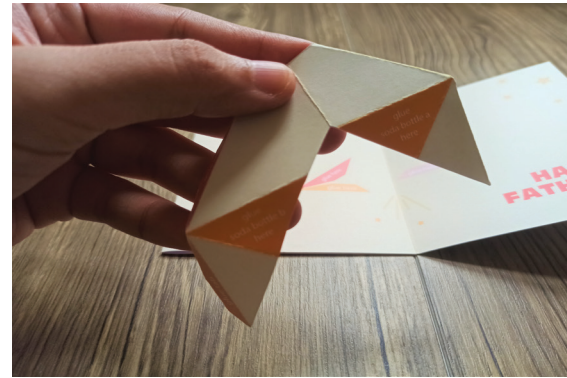
2. GLUE THE COVER THE BACK SIDE OF THE BASE



CARD LOOKS LIKE THIS WHEN CLOSED



CARD LOOKS LIKE THIS WHEN OPENED



4. FOLD THE HINGE ACCORDING TO THE SCORE MARKS INDICATED

5. GLUE EACH COLORED TAB ACCORDING TO THE COLORS INDICATED ON THE BASE



IT SHOULD LOOK LIKE THIS



6. GLUE BOTTLE A TO THE ORANGE MARKED "GLUE SODA BOTTLE A HERE"



7. GLUE BOTTLE B TO THE ORANGE MARKED "GLUE SODA BOTTLE B HERE"



WHAT IT SHOULD LOOK LIKE WHEN YOU'RE DONE

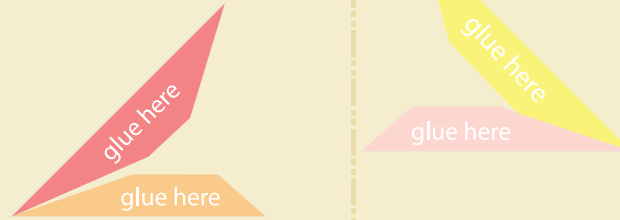




COVER

cheers!!!

HAPPY FATHER'S DAY

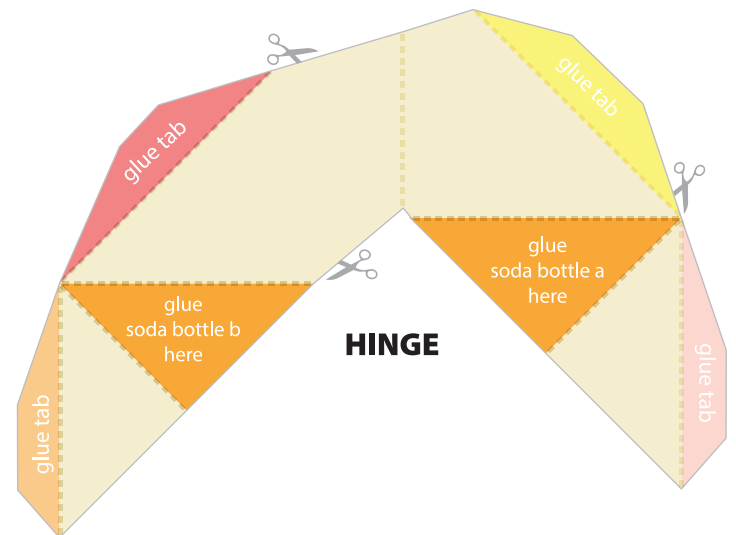


BASE



BOTTLE B

BOTTLE A



HINGE