

Mama To-Be Crown

By @jessdeaconworks

**For this craft
you'll need:**

- * Scissors or a craft knife
- * Glue (I use UHU all purpose)
- * A glue spreader or craft syringe (or a small folded piece of paper) to apply the glue.



Print out and make this eye catching crown for the mama to-be in your life!
A fun addition to any baby shower, or just as a gift.

This printable is available in 2 versions, to suit the time you have.

Mama To-Be Crown

By @jessdeaconworks

Instructions

1. First select which version of this craft you'd like to make:
 - * To create a layered intricate result (as pictured) print and cut parts 1-13.
 - * If you prefer a quicker result, there is a simplified version, in which case you can disregard parts 1-9 and just print & cut parts 10-16.
2. Cut out all parts required using a craft knife or scissors.

For the layered version, begin at step 3. For the simplified version, begin at step 13.

3. Take parts 1 & 2 and attach to part 3, glueing the tabs behind the corresponding sides of part 3.
4. Bend into a crown shape and temporarily attach at the back using a paperclip or some masking tape or similar (or you can glue it now if you already know the size it needs to be).
5. Take part 4 and join parts 5 and 6 to it so that they overlap slightly - there are marks to help you line them up and you can also use the guide illustration for reference.
6. Line up parts 4, 5 & 6 (now joined) on top of parts 1,2 & 3 (also now joined) and glue in place. Again, you can use the guide illustration for reference. Leave some of the outer leaves unglued and bend back slightly to create a 3D effect.
7. Take parts 7 & 8 and line up on top of the crown, using the guide illustration for reference. Once they are in place, glue on in a few places so that it's secure, but allow some leaves to bend out slightly to create a 3D effect.
8. Glue part 9 onto the crown, using the guide illustration for reference.
9. Take parts 10 and fold the butterflies in half, using the key to see the fold direction. Adding a line of glue to the spines (on the white side), attach to the crown, using the illustrated guide for reference in placing them.
10. Take parts 11 (the pink flowers) and create 2 flowers by glueing the smallest pieces inside the next smallest and so on. Before glueing, curve the paper slightly so that the petals come towards you. This will create 3D shapes. Glue onto the crown using the illustrated guide for reference.
11. Repeat this process with the yellow flowers (parts 12). This will make 3 yellow flowers.
12. Repeat this process with the blue flowers (parts 13). The parts make up 2 flowers, comprising of 4 layers and a small circle that needs to be glued into the centre of the smallest piece. The crown is complete.

Mama To-Be Crown

By @jessdeaconworks

Instructions cont.

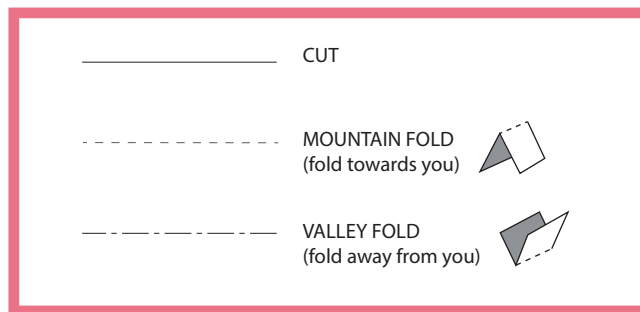
13. (Simplified version)

Take parts 15 and 16 and attach to part 14, glueing the tabs behind the corresponding sides of part 14.

14. Bend into a crown shape and temporarily attach at the back using a paperclip or some masking tape or similar (or you can glue it now if you already know the size it needs to be).

15. Go to step 9 and follow the instructions until you have completed step 12 and the crown is complete.

KEY

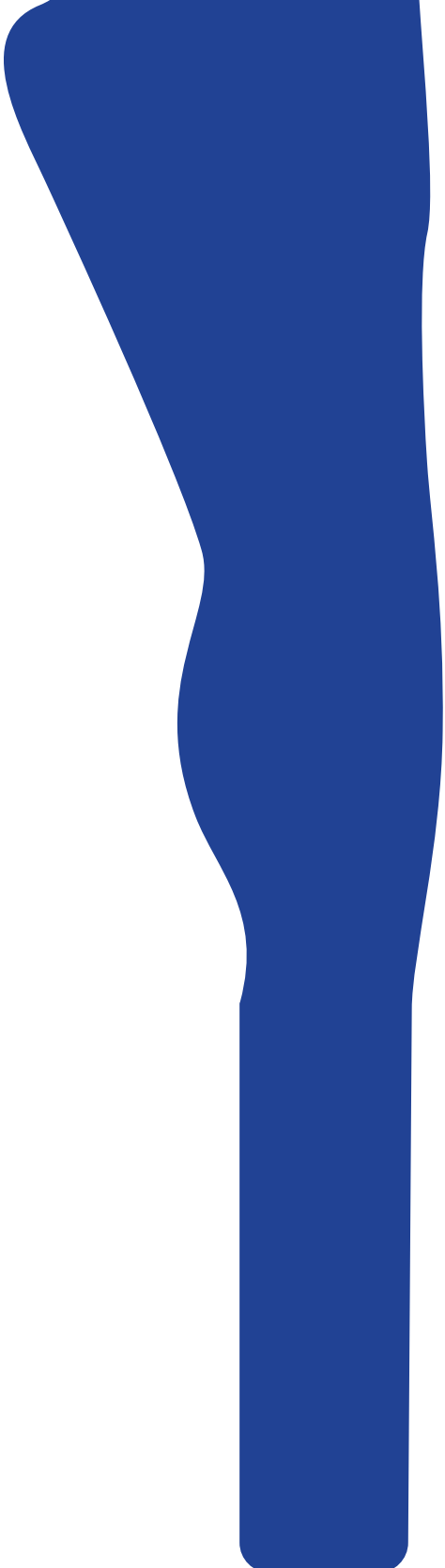


GUIDE ILLUSTRATION



PART
1

GLUE TAB BEHIND PART 3 SIDE A



PART
2

GLUE TAB BEHIND PART 3 SIDE B



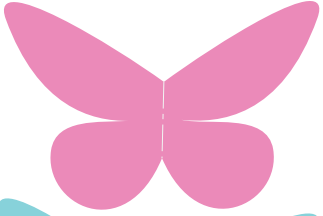
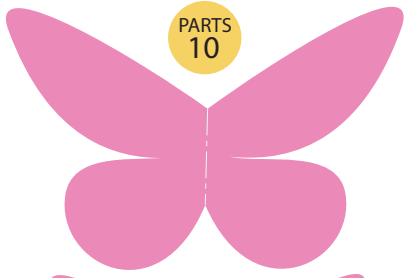
PART
3

SIDE B

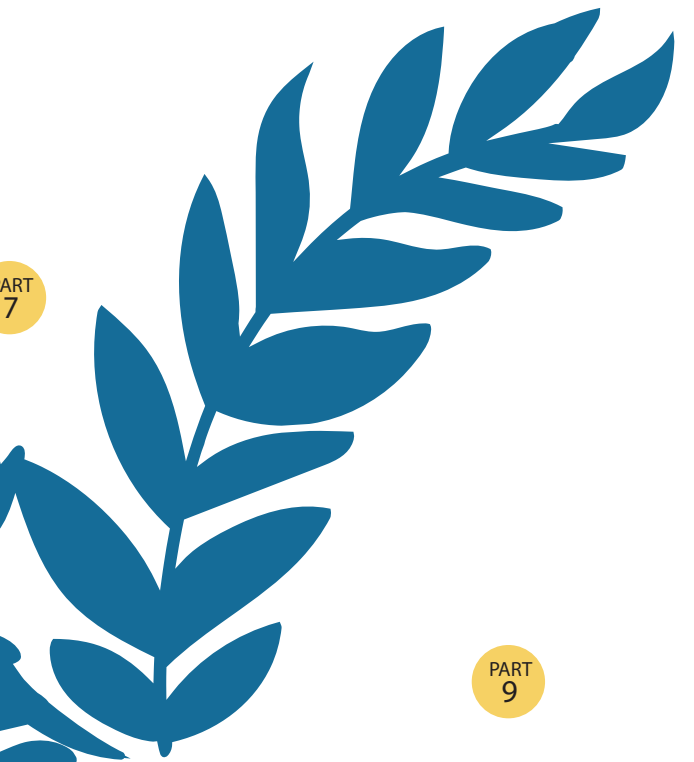


SIDE A



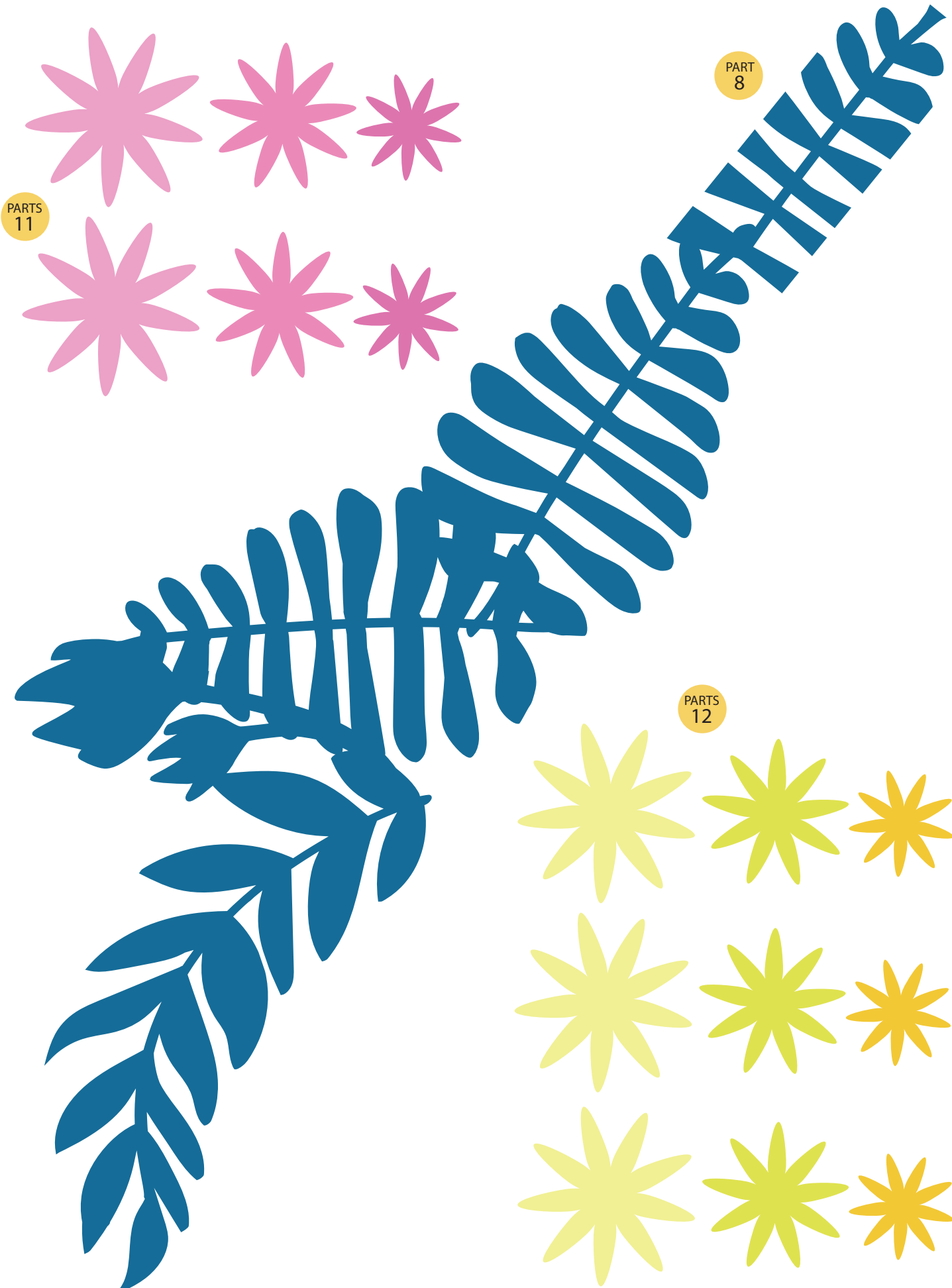


PART 7



PART 9



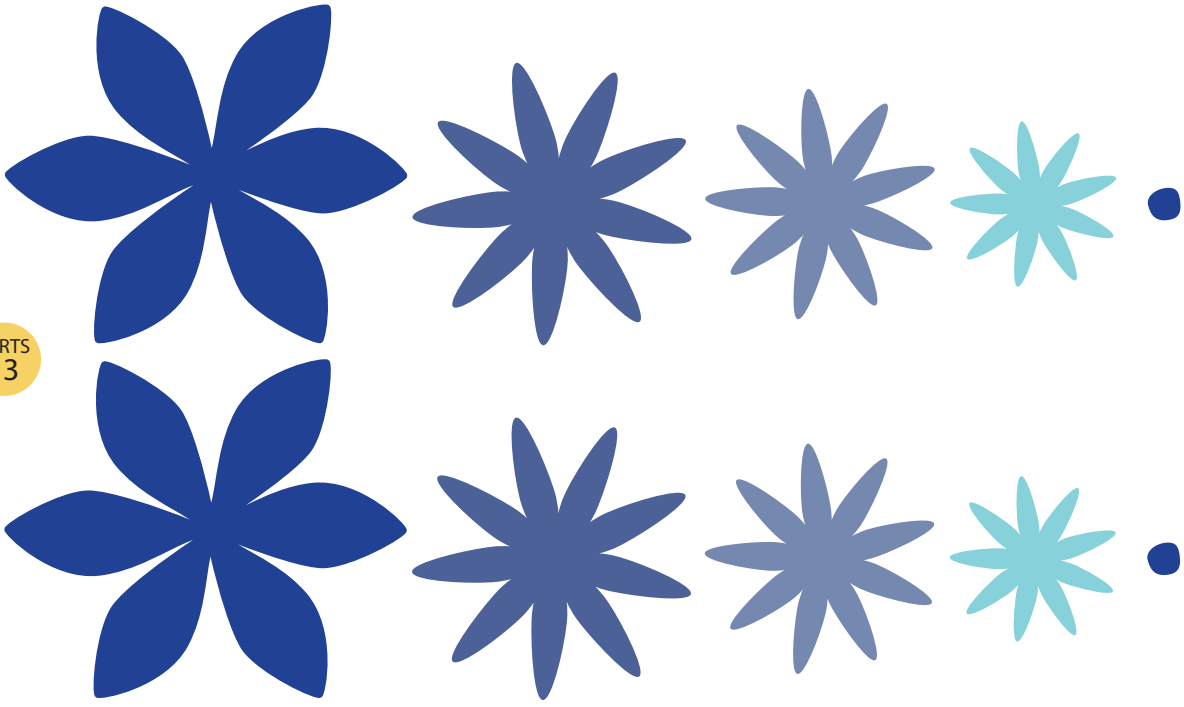


PARTS
11

PART
8

PARTS
12

PARTS
13



PARTS
14

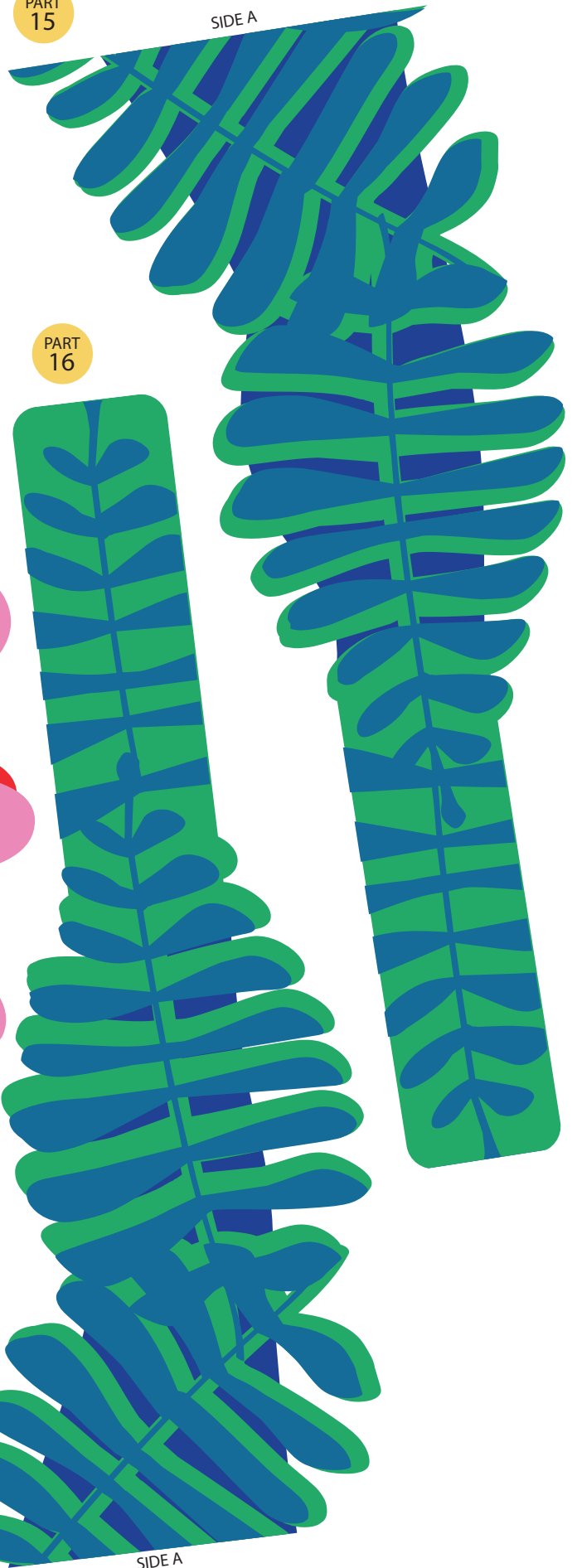
GLUE TAB BEHIND PART 15 SIDE A



GLUE TAB BEHIND PART 16 SIDE A

PART
15

SIDE A



PART
16

SIDE A

