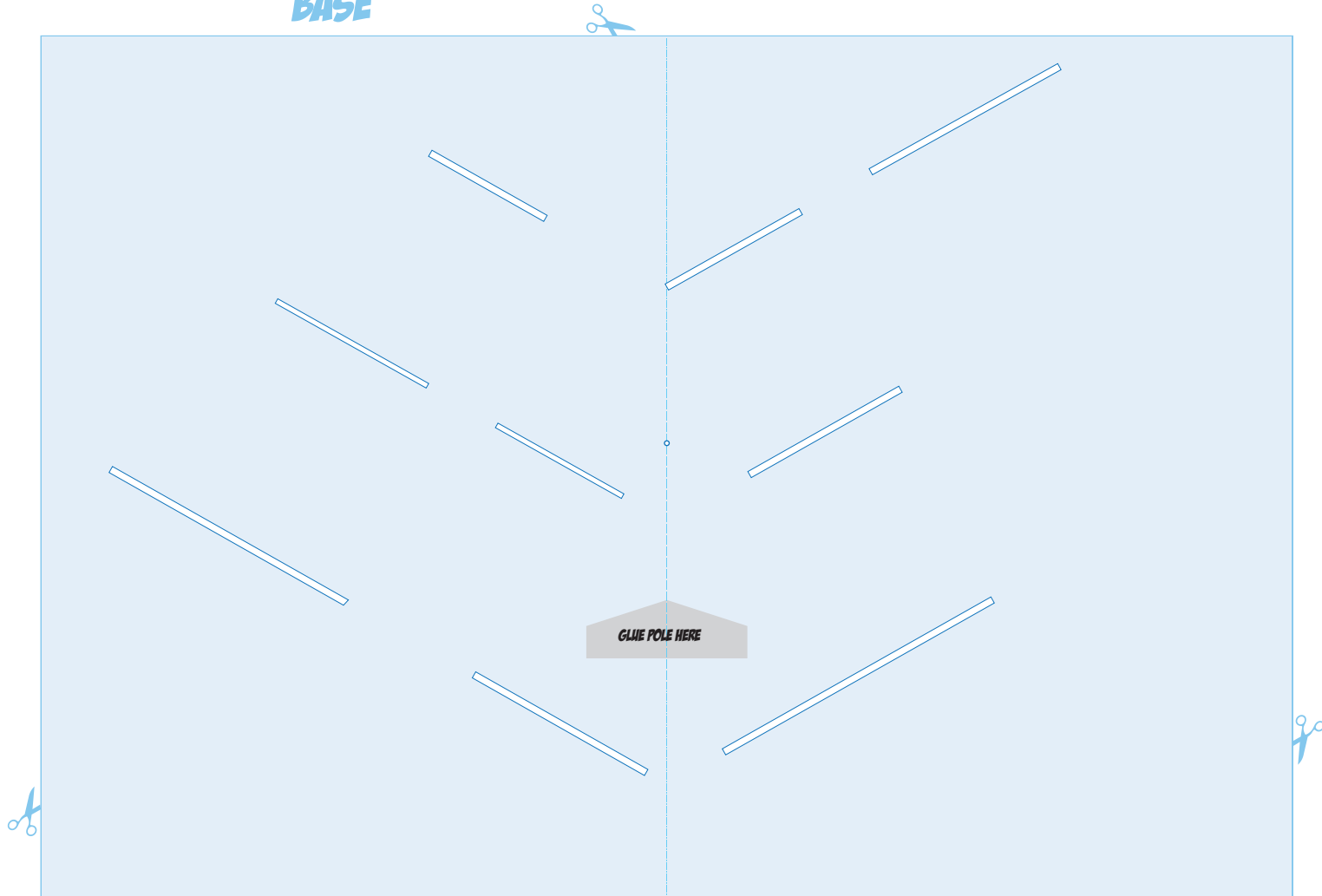




(MERRY CHRISTMAS) ICE SKATING POP-UP CARD

How to by Edge Marquez(@ popp3d)

BASE



WHAT YOU NEED:

A pair of scissors or craft knife or any cutting tool that you have. Glue. Any scoring tool. A push pin or anything that could make a tiny hole. Some string, twine or thread for the twisting mechanism(length or the card at least). And a cotton buds(the plastic handle of it) or a tooth pick. Or anything that thin that is sturdy.

And to print out the template in cardstock or any paper thicker than normal copier paper(at least 160gsm)

CUT AROUND



OR



CUT



CUT SHAPE OUT



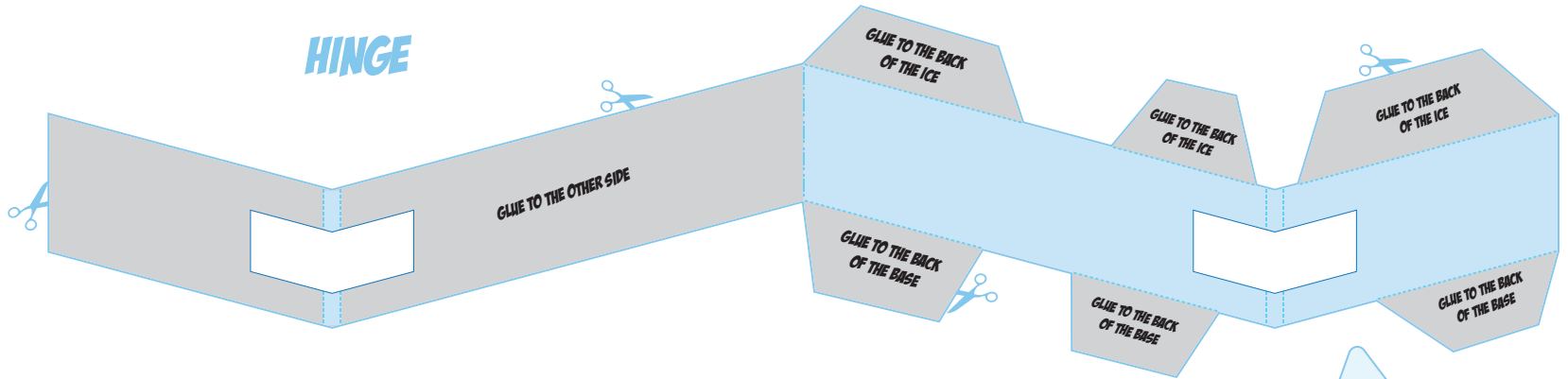
VALLEY FOLD



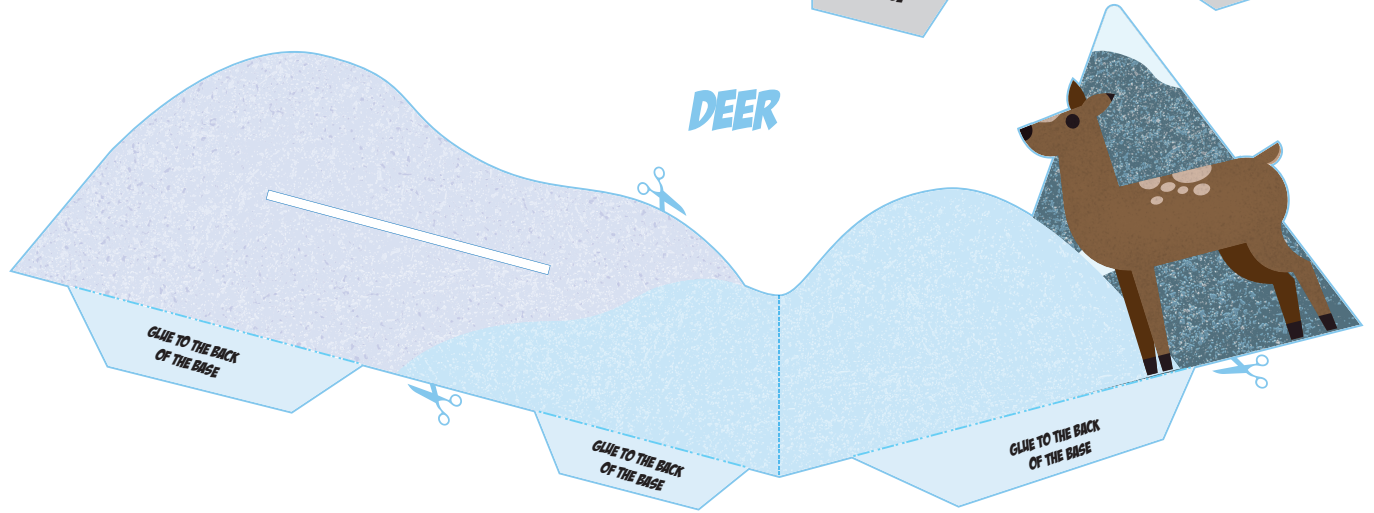
MOUNTAIN FOLD



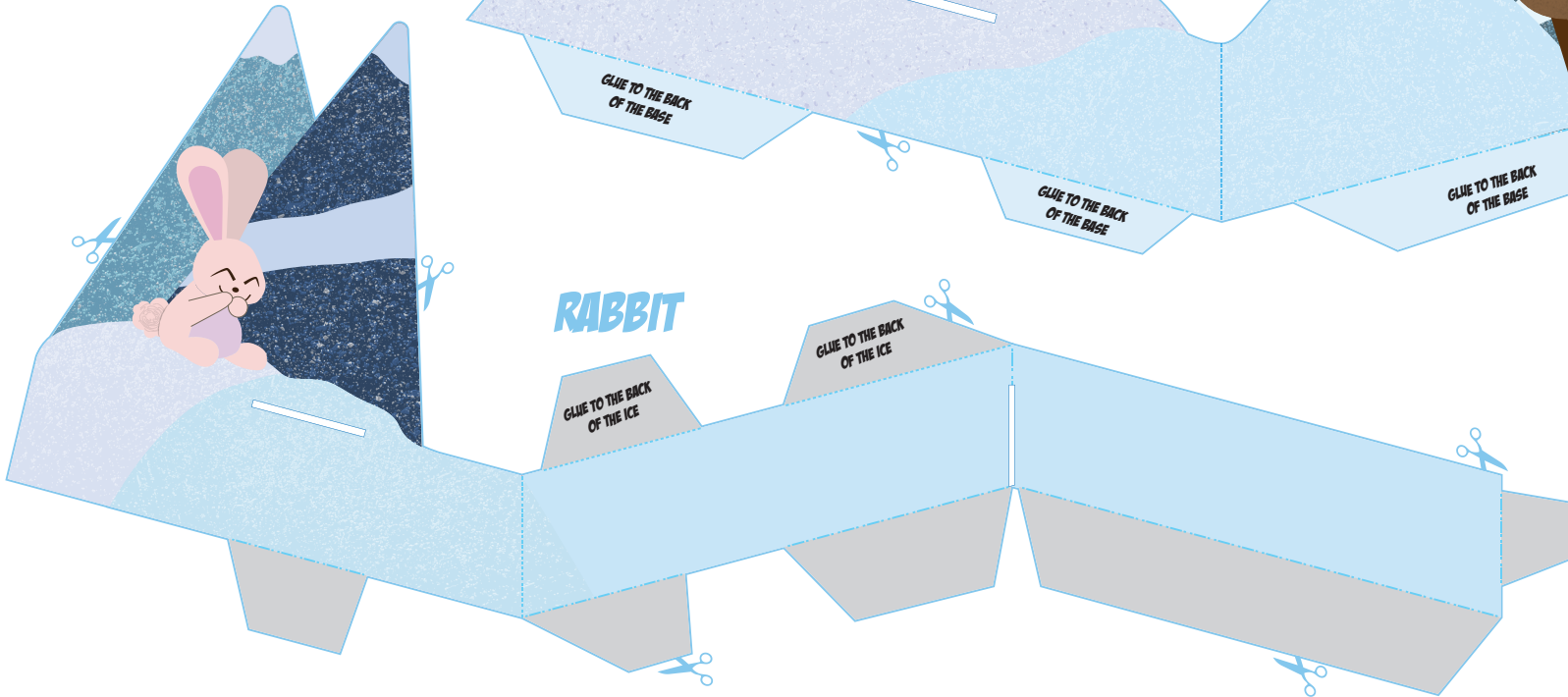
HINGE

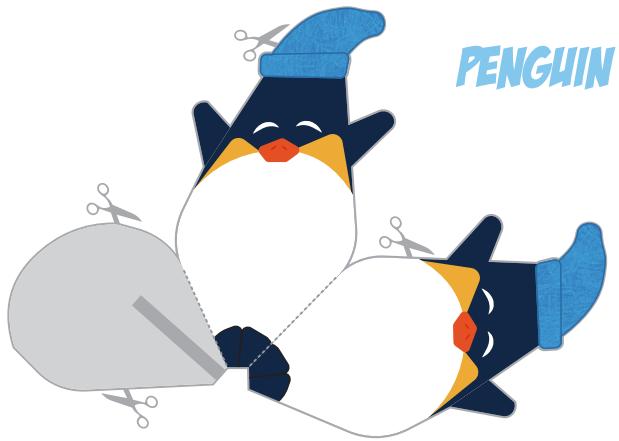


DEER

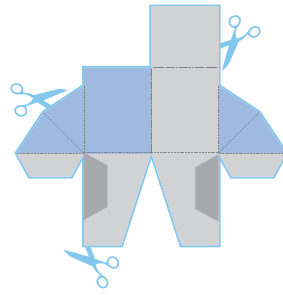


RABBIT





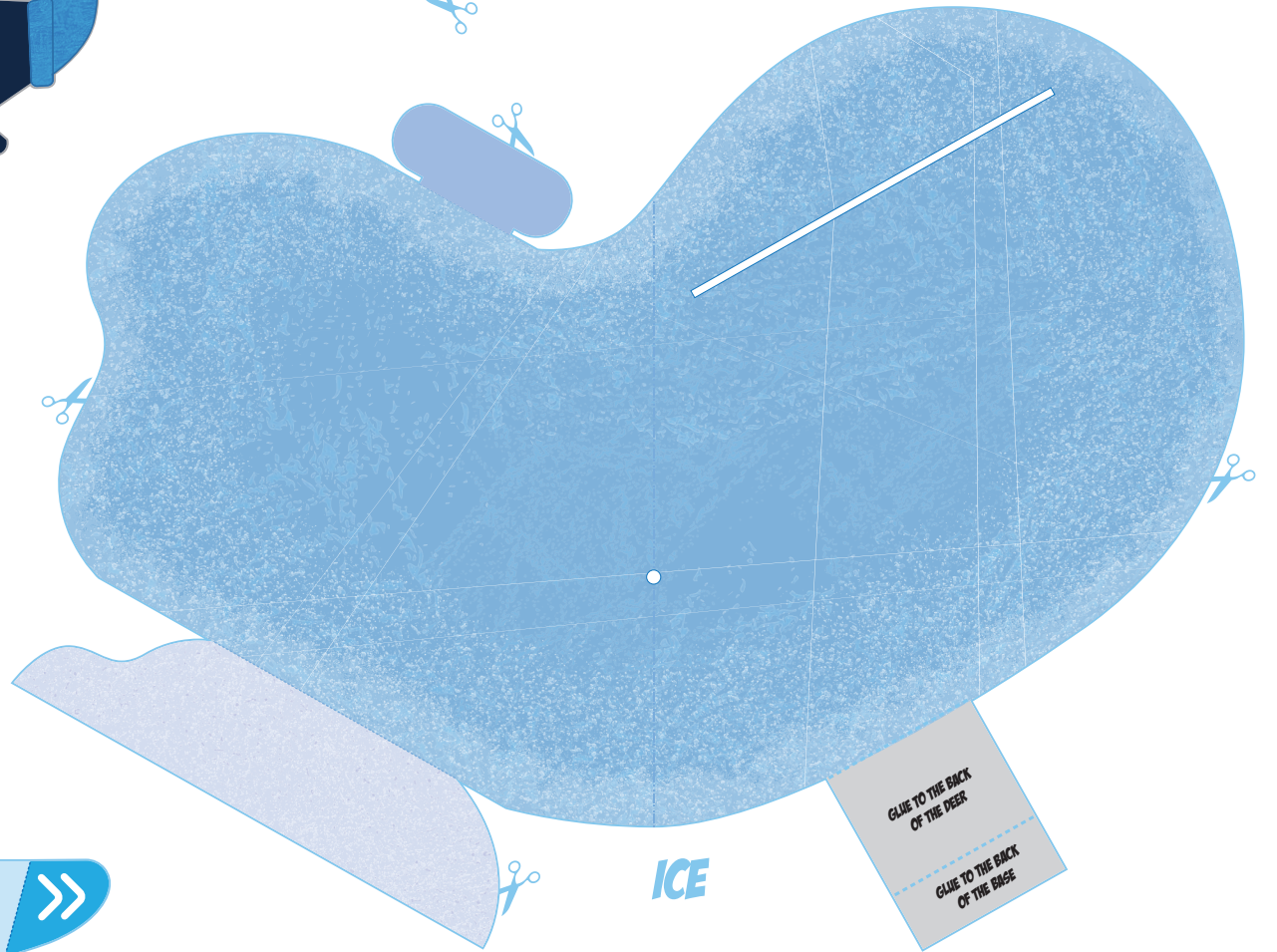
PENGUIN



POLE



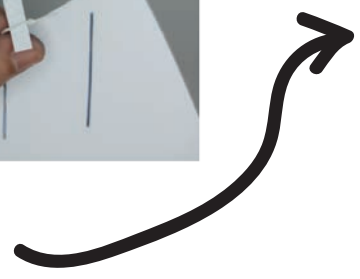
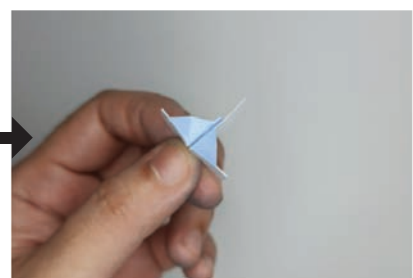
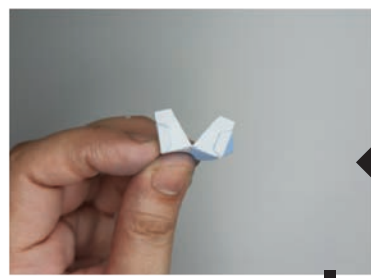
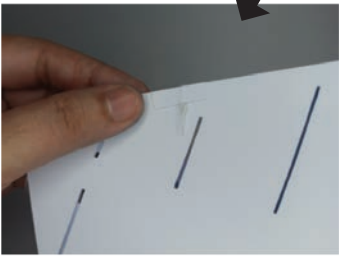
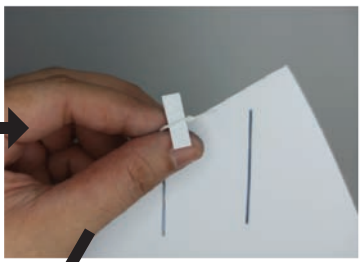
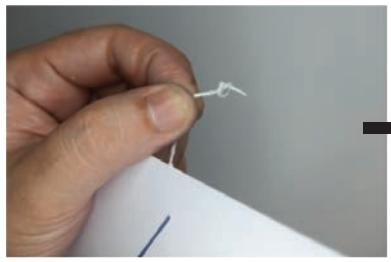
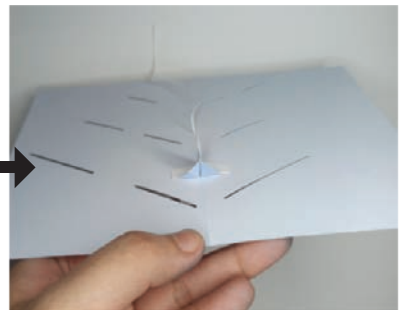
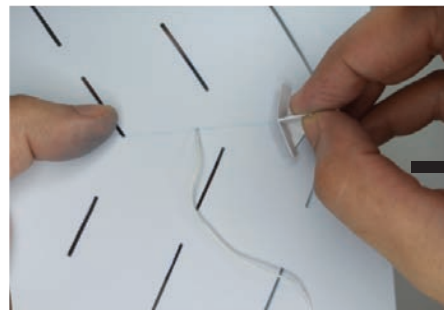
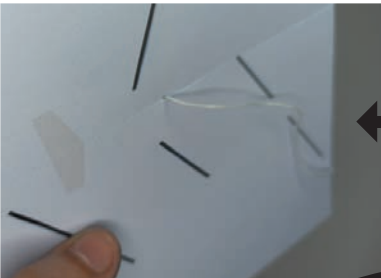
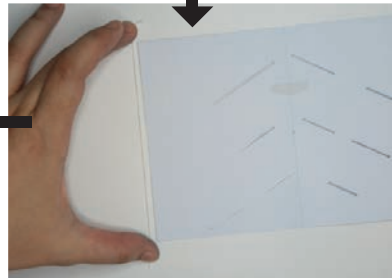
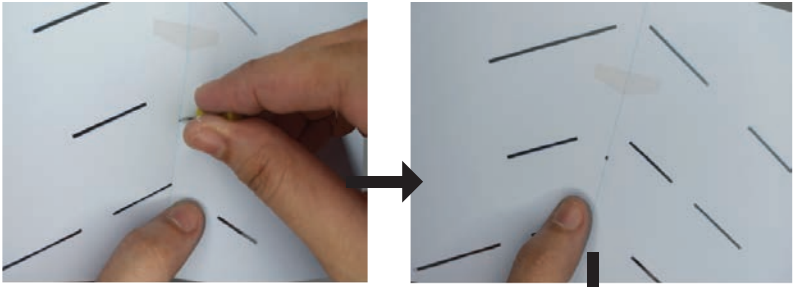
BEAR

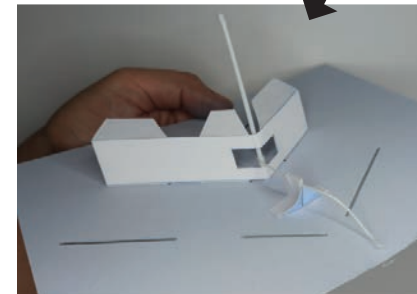
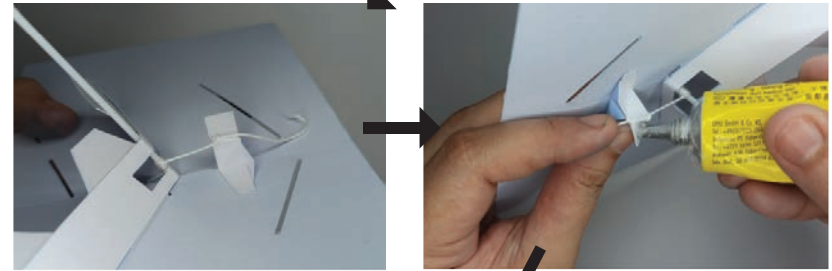
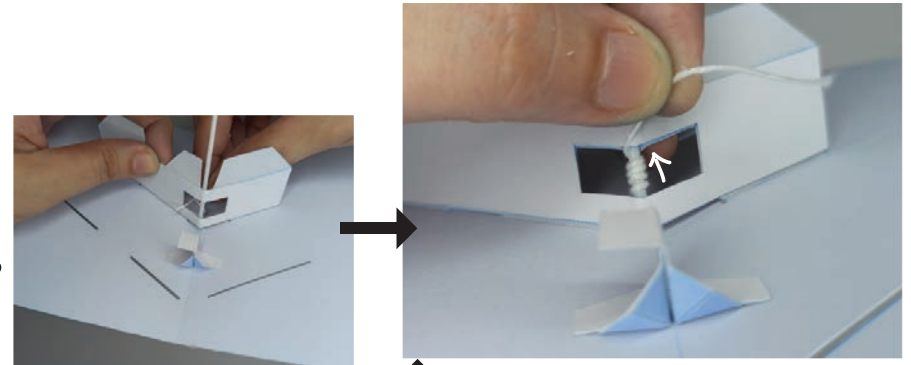
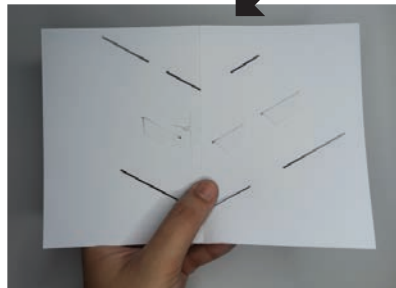
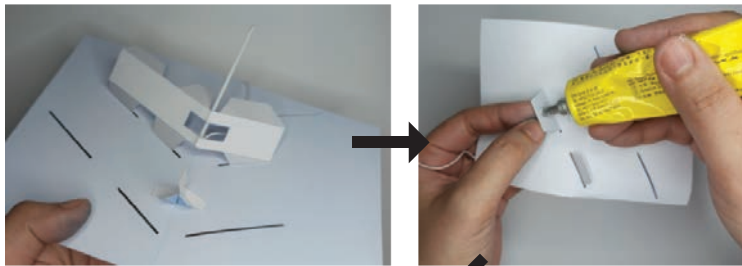
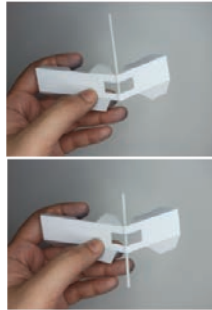
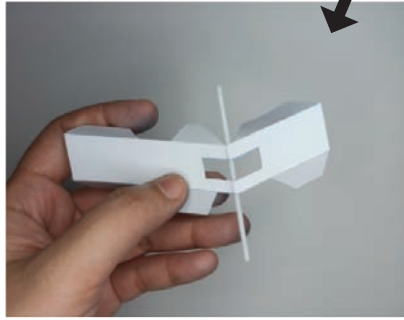
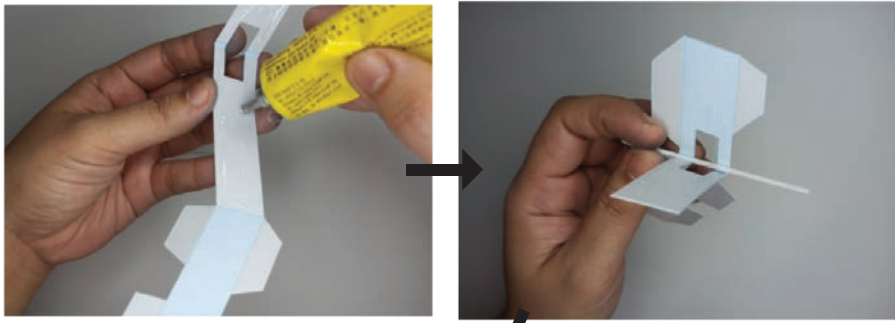


ICE



COVER





*Make sure that the tension on the string is a bit tight. To do this, try not to lay the base flat. Try closing it a little while tying the string onto the pole. This is important so that your mechanism works.

