



# Christmas Papercraft

By Jess Deacon



Print out and build your own papercraft decorations and party wear this Christmas and New Year!

The series includes: 2 table centrepieces, 2 tree ornaments, 1 mask, 3 mini presents and 2 party hats, with instructions on how to construct each one.

---

## #5 Polar Bear Mask



# Christmas Papercraft

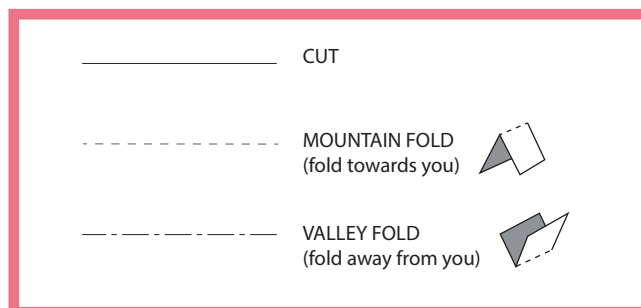
By Jess Deacon

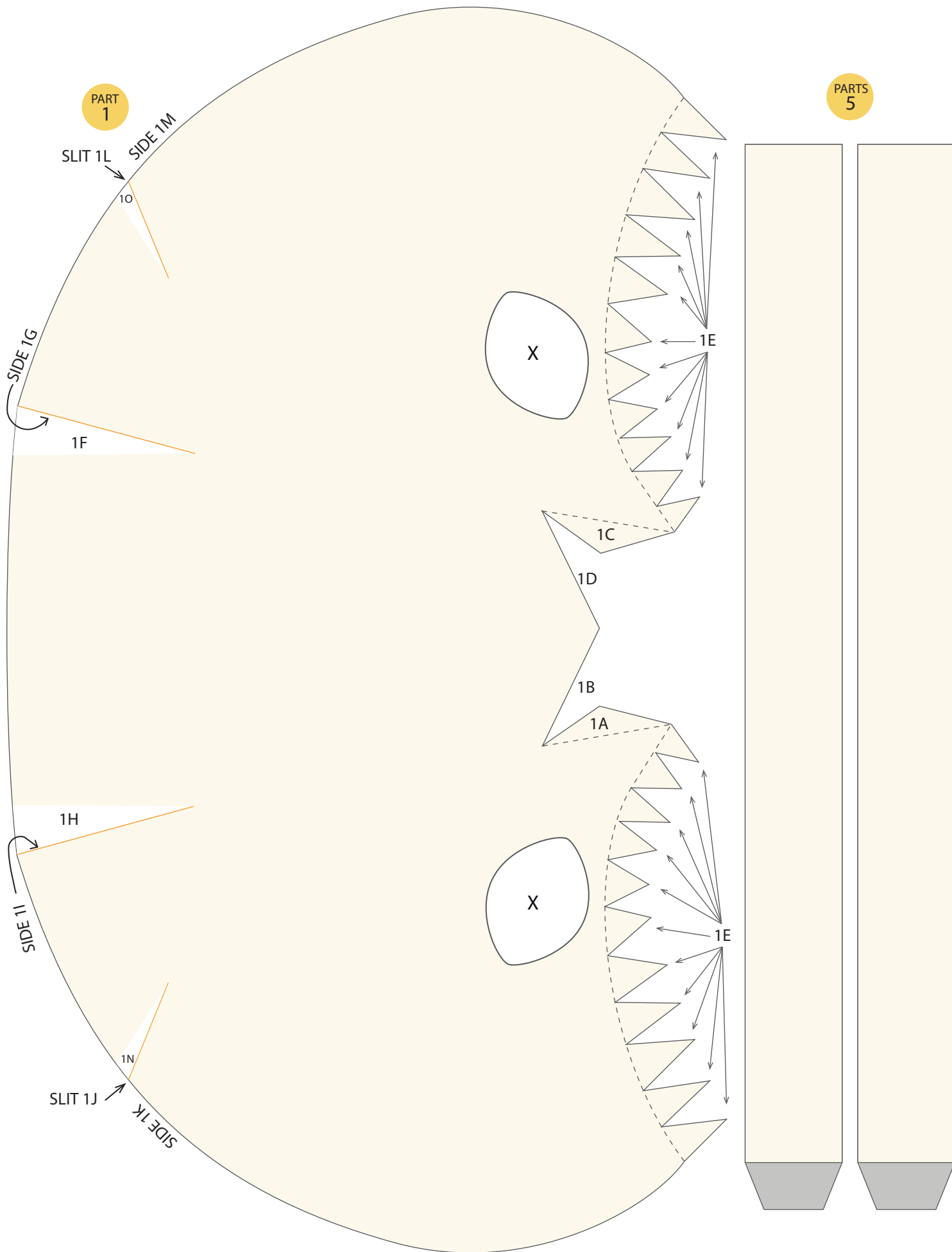
## #5 Polar Bear Mask instructions

---

- 1 Cut out all parts. Use a craft knife for best results. Also cut out the internal shapes marked with an X on part 1. Take note of the cut lines marked in yellow on parts 1, 3 & 4 and cut these lines too as slits.
2. Carefully fold along all fold lines (see key). Before folding it is recommended to score the line lightly with a craft knife or a ballpoint pen that no longer has ink in it. This will make folding easier and more precise.
3. Take Part 1. Glue tab 1A behind side 1B. Then glue tab 1C behind side 1D.
4. Take Part 2. Gently bend it round into a snout shape. Glue tab 2A behind side 2B. Then glue tab 2C behind side 2D.
5. Glue tab 2E behind side 2F. Then glue tab 2G behind side 2H
6. Taking parts 1 & 2, glue tabs 1E behind side 2I. It will be easier if you start at one end and work your way round, gluing a few tabs at a time while you bend the snout.
7. Glue tab 1F behind side 1G. Then glue tab 1H behind side 1I
8. Take part 3. Glue tab 3A behind side 3B. Then glue tab 3C behind slit 1J, with the tab facing forward. Then glue tab 3D behind side 1K, with the tab facing forward.
9. Repeat this process with Part 4 on the right side of the bear's head, using the corresponding tabs, slits and sides.
10. Glue tab 1N behind slit 1J. Then glue tab 1O behind slit 1L.
11. To make the headband of the mask: attach the tabs of parts 5 to the insides of the mask, checking that they are at a suitable height for you head when wearing the mask. Once these are firmly in place, place the mask on your face and pull the ends round to the back of your head and fix together (you can use a paperclip or a piece of masking tape to allow further adjustments). Trim excess paper from the ends if necessary and glue in place.

### KEY





PART 1

PARTS 5

SLIT 1L

SIDE 1M

1O

SIDE 1G

1F

X

1E

1C

1D

1B

1A

X

1E

SIDE 1I

1H

SLIT 1J

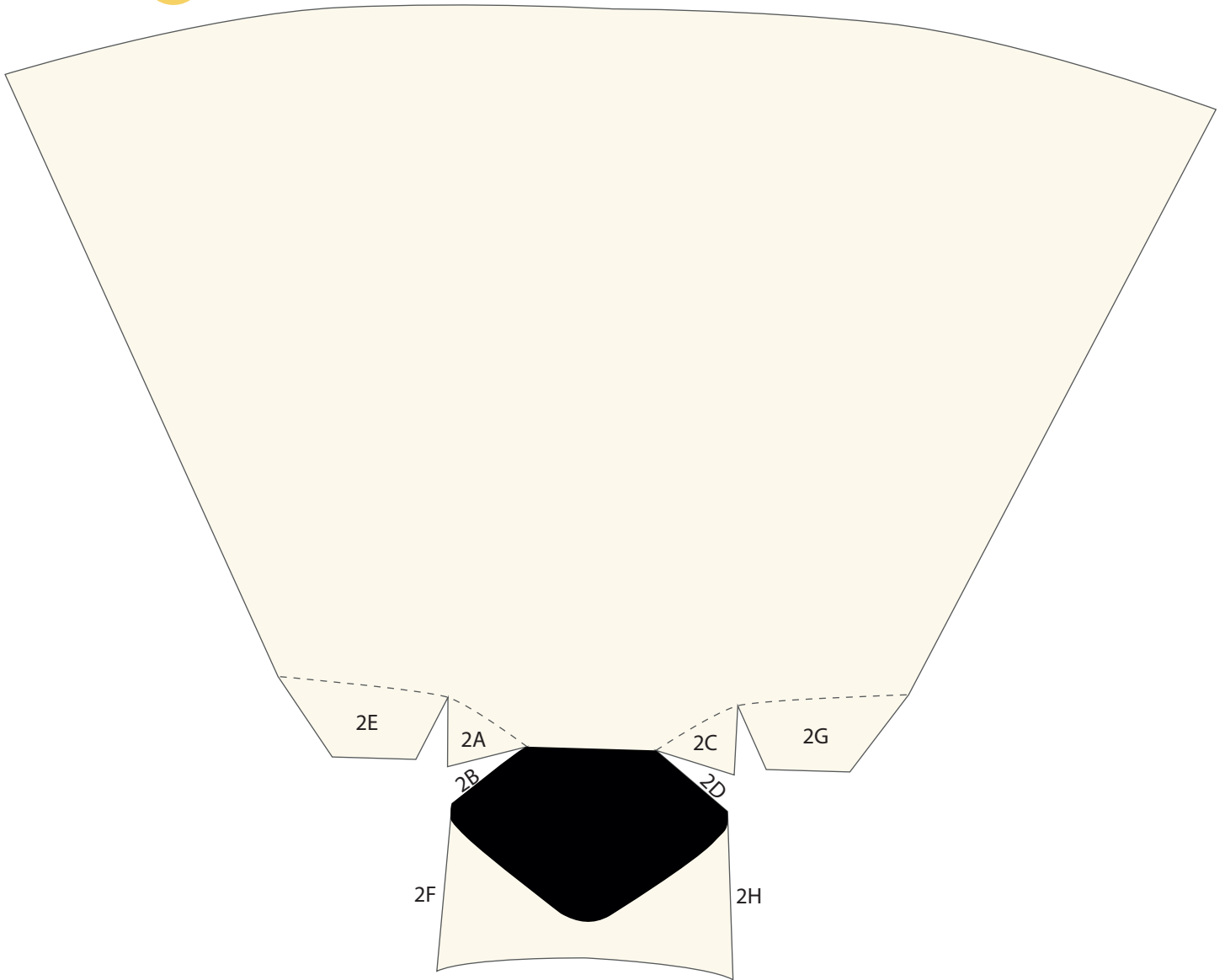
SIDE 1K

1N

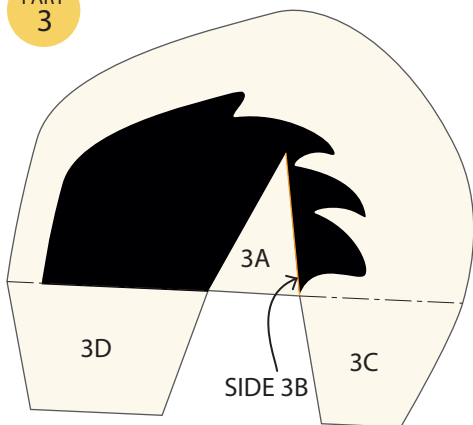
PARTS 5

PART 2

2I



PART 3



PART 4

