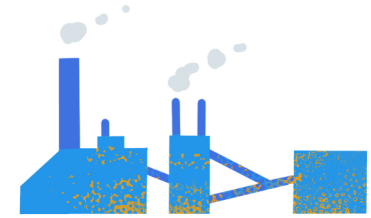


LIFE CYCLE OF PAPER



1. Trees are cut down into logs and transported to a mill.

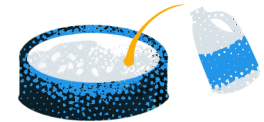


2. The logs are then debarked and chipped into tiny pieces.



3. Then the small chips are treated with chemicals until they form a pulp.

4. The treated pulp is bleached for cleaning and brightening.



5. Then the pulp is placed onto a screen to allow water to drain away.

6. When the fibers in the pulp are joined, the paper is placed into a heated roller for drying and flattening.

7. Large sheets are rolled up and sent to machines that will cut the paper into different sizes.



8. The paper is then packaged and transported around the world.



9. Paper is then used in a variety of ways! Can you think of ways that you use paper?



LANDFILL

** Releases harmful gases!



RECYCLED

** Saves trees, energy & reduces pollution!

10. Depending on what choices you make, paper either ends up in a landfill or it is recycled!

Spread the word! Help others to recycle by sharing what you have learned!

Handwriting practice area consisting of five sets of horizontal lines. Each set includes a solid green top line, a dashed orange middle line, and a solid green bottom line.

