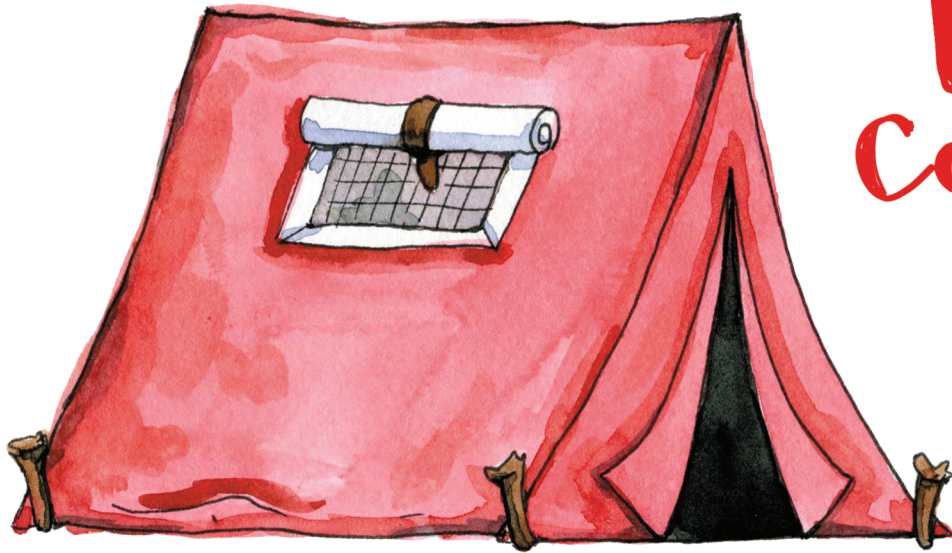


# TERRARIUM

## Camping Friends



1. PRINT PAGE & CUT OUT CAMPING BUDDIES
  2. GLUE THEM ONTO THE TOP HALF OF TOOTHPICKS
  3. FILL GLASS TERRARIUM WITH SAND OR DIRT
  4. STICK CAMPING BUDDIES INTO THE SAND
  5. ADD ROCKS, MOSS, AIR PLANTS ETC. FOR A CUTE CAMPING SCENE!
- \*TIP: YOU CAN ALSO ADD TO THEM POTTED PLANTS!

