



Charity Box





Instructions

Cut, Paste & Fold

Tools:

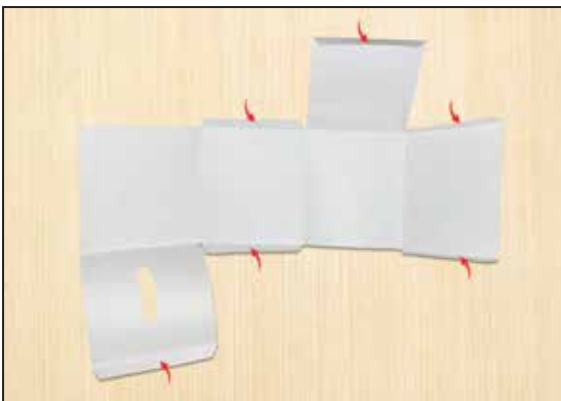
Scissors

Glue

How to make it:



- Take the printable sheet and cut along the dotted lines. Also, cut the rectangular slit as shown in the image.



- Flip the cutout over and start folding from the right edge and go towards the left. Crease tightly to form a cube-like structure.



- Glue the tiny flaps from the inside and stick the edges. Your Charity Box is ready!

Print the page

